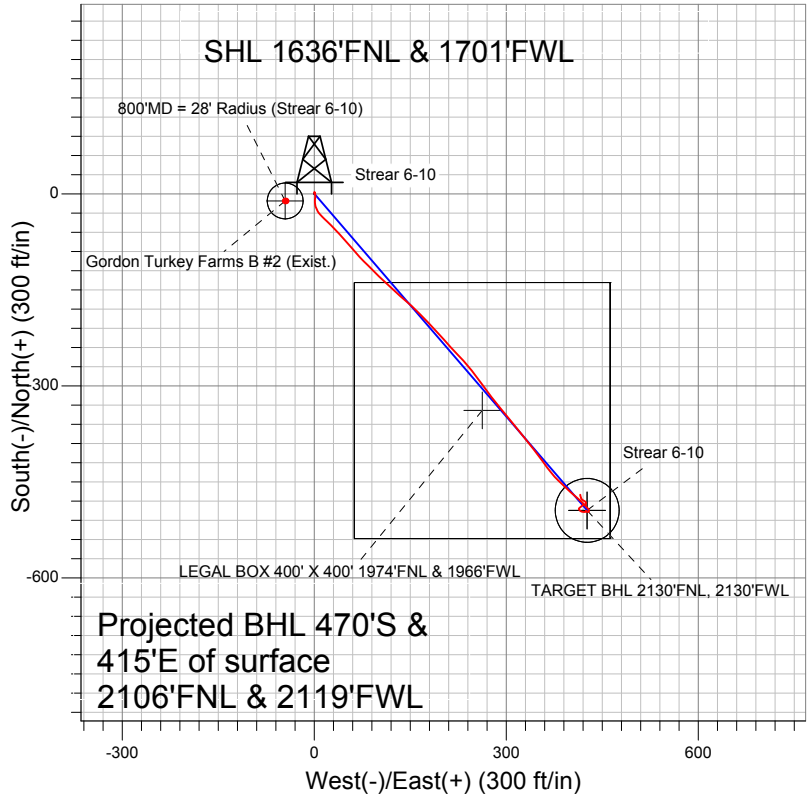


Anadarko, Weld County CO



LEGEND

- ▲ Strear 6-10, Wellbore #1, Plan #1 (8-23-11) V0
- + Gordon Turkey Farms B #2 (Exist.), Wellbore #1, Design #1 V0
- Wellbore #1

Final Survey Plot

Projected Final Survey -
 8150'MD & 8086'TVD @ 627' VS
 0.3 deg Inc 323.7 deg AZ

Project: SEC.10-T2N-R67W
 Site: Strear 18-10-9F Pad Sec.10-T2N-R67W
 Well: Strear 6-10
 Plan: Wellbore #1



Anadarko, Weld County CO

SEC.10-T2N-R67W

Strear 18-10-9F Pad Sec.10-T2N-R67W

Strear 6-10

Wellbore #1

Design: Wellbore #1

Standard Survey Report

10 October, 2011



Company:	Anadarko, Weld County CO	Local Co-ordinate Reference:	Well Strear 6-10
Project:	SEC.10-T2N-R67W	TVD Reference:	WELL @ 4957.0ft (Original Well Elev)
Site:	Strear 18-10-9F Pad Sec.10-T2N-R67W	MD Reference:	WELL @ 4957.0ft (Original Well Elev)
Well:	Strear 6-10	North Reference:	True
Wellbore:	Wellbore #1	Survey Calculation Method:	Minimum Curvature
Design:	Wellbore #1	Database:	Landmark

Project	SEC.10-T2N-R67W, Weld County, Colorado		
Map System:	US State Plane 1983	System Datum:	Mean Sea Level
Geo Datum:	North American Datum 1983		Using Well Reference Point
Map Zone:	Colorado Northern Zone		Using geodetic scale factor

Site	Strear 18-10-9F Pad Sec.10-T2N-R67W		
Site Position:		Northing:	1,300,092.30 ft
From:	Lat/Long	Easting:	3,173,351.75 ft
Position Uncertainty:	0.0 ft	Slot Radius:	"
		Latitude:	40.155484
		Longitude:	-104.879807
		Grid Convergence:	0.40 °

Well	Strear 6-10		
Well Position	+N/-S	0.0 ft	Northing: 1,300,062.05 ft
	+E/-W	0.0 ft	Easting: 3,173,351.96 ft
Position Uncertainty	0.0 ft	Wellhead Elevation:	ft
		Latitude:	40.155401
		Longitude:	-104.879807
		Ground Level:	4,942.0 ft

Wellbore	Wellbore #1				
Magnetics	Model Name	Sample Date	Declination (°)	Dip Angle (°)	Field Strength (nT)
	IGRF2010	8/30/2011	8.88	66.83	52,967

Design	Wellbore #1				
Audit Notes:					
Version:	1.0	Phase:	ACTUAL	Tie On Depth:	0.0
Vertical Section:	Depth From (TVD) (ft)	+N/-S (ft)	+E/-W (ft)	Direction (°)	
	0.0	0.0	0.0	138.55	

Survey Program	Date	10/10/2011			
From (ft)	To (ft)	Survey (Wellbore)	Tool Name	Description	
148.0	8,150.0	Survey #1 (Wellbore #1)	MWD	MWD - Standard	

Survey										
Measured Depth (ft)	Inclination (°)	Azimuth (°)	Vertical Depth (ft)	+N/-S (ft)	+E/-W (ft)	Vertical Section (ft)	Dogleg Rate (°/100ft)	Build Rate (°/100ft)	Turn Rate (°/100ft)	
0.0	0.00	0.00	0.0	0.0	0.0	0.0	0.00	0.00	0.00	
148.0	1.20	4.80	148.0	1.5	0.1	-1.1	0.81	0.81	0.00	
236.0	0.40	10.30	236.0	2.8	0.3	-1.9	0.91	-0.91	6.25	
328.0	1.10	161.80	328.0	2.2	0.6	-1.3	1.59	0.76	164.67	
420.0	1.50	173.40	420.0	0.2	1.0	0.5	0.52	0.43	12.61	
512.0	1.60	167.30	511.9	-2.2	1.4	2.6	0.21	0.11	-6.63	
604.0	1.50	183.80	603.9	-4.7	1.6	4.6	0.50	-0.11	17.93	
636.0	1.60	186.20	635.9	-5.6	1.6	5.2	0.37	0.31	7.50	
726.0	2.30	194.30	725.8	-8.6	1.0	7.1	0.83	0.78	9.00	
802.3	3.77	177.15	802.0	-12.6	0.7	9.9	2.25	1.93	-22.47	
800'MD = 28' Radius (Strear 6-10)										
818.0	4.10	175.20	817.7	-13.6	0.8	10.7	2.25	2.08	-12.43	
912.0	7.00	160.90	911.2	-22.4	2.9	18.7	3.39	3.09	-15.21	

Company:	Anadarko, Weld County CO	Local Co-ordinate Reference:	Well Strear 6-10
Project:	SEC.10-T2N-R67W	TVD Reference:	WELL @ 4957.0ft (Original Well Elev)
Site:	Strear 18-10-9F Pad Sec.10-T2N-R67W	MD Reference:	WELL @ 4957.0ft (Original Well Elev)
Well:	Strear 6-10	North Reference:	True
Wellbore:	Wellbore #1	Survey Calculation Method:	Minimum Curvature
Design:	Wellbore #1	Database:	Landmark

Survey									
Measured Depth (ft)	Inclination (°)	Azimuth (°)	Vertical Depth (ft)	+N/-S (ft)	+E/-W (ft)	Vertical Section (ft)	Dogleg Rate (°/100ft)	Build Rate (°/100ft)	Turn Rate (°/100ft)
1,007.0	7.80	137.60	1,005.5	-32.6	9.2	30.5	3.24	0.84	-24.53
1,103.0	9.80	132.80	1,100.3	-43.0	19.6	45.2	2.22	2.08	-5.00
1,198.0	11.30	136.50	1,193.7	-55.2	31.9	62.5	1.73	1.58	3.89
1,293.0	12.10	138.30	1,286.7	-69.4	45.0	81.8	0.93	0.84	1.89
1,388.0	12.00	138.80	1,379.6	-84.3	58.1	101.6	0.15	-0.11	0.53
1,483.0	11.50	138.80	1,472.7	-98.8	70.8	121.0	0.53	-0.53	0.00
1,579.0	11.20	131.90	1,566.8	-112.3	84.1	139.8	1.45	-0.31	-7.19
1,674.0	10.90	136.10	1,660.0	-124.9	97.2	157.9	0.90	-0.32	4.42
1,769.0	10.90	134.40	1,753.3	-137.7	109.8	175.9	0.34	0.00	-1.79
1,864.0	11.30	131.60	1,846.5	-150.1	123.2	194.1	0.71	0.42	-2.95
1,959.0	11.70	130.30	1,939.6	-162.5	137.5	212.8	0.50	0.42	-1.37
2,054.0	11.30	132.30	2,032.7	-175.0	151.7	231.6	0.59	-0.42	2.11
2,150.0	10.90	136.30	2,126.9	-187.9	165.0	250.0	0.90	-0.42	4.17
2,245.0	10.90	135.60	2,220.2	-200.8	177.4	268.0	0.14	0.00	-0.74
2,342.0	10.90	138.30	2,315.5	-214.2	190.0	286.3	0.53	0.00	2.78
2,437.0	10.60	136.80	2,408.8	-227.3	201.9	304.0	0.43	-0.32	-1.58
2,532.0	10.40	137.90	2,502.2	-240.0	213.6	321.3	0.30	-0.21	1.16
2,628.0	10.60	137.00	2,596.6	-252.9	225.5	338.8	0.27	0.21	-0.94
2,723.0	11.30	138.60	2,689.9	-266.3	237.6	356.9	0.80	0.74	1.68
2,818.0	12.80	142.80	2,782.8	-281.7	250.1	376.7	1.83	1.58	4.42
2,913.0	13.50	144.60	2,875.3	-299.1	262.9	398.2	0.85	0.74	1.89
3,009.0	13.90	142.30	2,968.6	-317.3	276.4	420.8	0.70	0.42	-2.40
3,104.0	13.20	140.40	3,060.9	-334.7	290.3	443.1	0.87	-0.74	-2.00
3,199.0	13.70	141.10	3,153.3	-351.8	304.3	465.2	0.55	0.53	0.74
3,294.0	13.50	140.50	3,245.6	-369.1	318.4	487.5	0.26	-0.21	-0.63
3,389.0	13.00	141.10	3,338.1	-386.0	332.2	509.2	0.55	-0.53	0.63
3,484.0	12.80	143.90	3,430.7	-402.8	345.1	530.4	0.69	-0.21	2.95
3,580.0	12.60	143.00	3,524.4	-419.8	357.7	551.4	0.29	-0.21	-0.94
3,675.0	11.30	141.40	3,617.3	-435.3	369.7	571.0	1.41	-1.37	-1.68
3,770.0	10.00	133.70	3,710.7	-448.3	381.5	588.6	2.03	-1.37	-8.11
3,865.0	8.30	133.90	3,804.5	-458.8	392.4	603.6	1.79	-1.79	0.21
3,960.0	6.90	131.20	3,898.6	-467.3	401.6	616.1	1.52	-1.47	-2.84
4,055.0	6.20	131.00	3,993.0	-474.4	409.8	626.8	0.74	-0.74	-0.21
4,150.0	5.80	134.00	4,087.5	-481.1	417.1	636.7	0.53	-0.42	3.16
4,245.0	5.40	137.40	4,182.0	-487.7	423.6	646.0	0.55	-0.42	3.58
4,340.0	2.90	139.70	4,276.8	-492.9	428.2	652.8	2.64	-2.63	2.42
4,436.0	1.80	198.90	4,372.7	-496.1	429.3	656.0	2.62	-1.15	61.67
4,463.3	1.34	215.11	4,400.0	-496.8	428.9	656.3	2.32	-1.68	59.30
TARGET BHL 2130'FNL, 2130'FWL									
4,531.0	1.30	288.20	4,467.7	-497.2	427.7	655.8	2.32	-0.06	108.01
4,626.0	1.50	298.70	4,562.6	-496.3	425.6	653.7	0.34	0.21	11.05
4,721.0	0.60	135.60	4,657.6	-496.0	424.9	653.1	2.19	-0.95	-171.68
4,816.0	0.50	231.10	4,752.6	-496.7	424.9	653.5	0.86	-0.11	100.53
4,912.0	1.20	261.10	4,848.6	-497.1	423.6	653.0	0.84	0.73	31.25
5,007.0	1.10	276.40	4,943.6	-497.1	421.7	651.8	0.34	-0.11	16.11
5,102.0	1.20	274.30	5,038.6	-496.9	419.8	650.4	0.11	0.11	-2.21
5,197.0	1.10	287.00	5,133.6	-496.6	417.9	648.9	0.29	-0.11	13.37
5,291.0	0.90	300.70	5,227.6	-496.0	416.4	647.4	0.33	-0.21	14.57
5,387.0	1.00	309.80	5,323.5	-495.0	415.2	645.9	0.19	0.10	9.48
5,482.0	0.70	315.40	5,418.5	-494.1	414.1	644.5	0.33	-0.32	5.89
5,577.0	1.00	332.00	5,513.5	-493.0	413.3	643.1	0.41	0.32	17.47
5,672.0	1.30	47.90	5,608.5	-491.5	413.7	642.3	1.51	0.32	79.89
5,767.0	1.40	52.60	5,703.5	-490.1	415.4	642.3	0.16	0.11	4.95
5,862.0	1.50	43.00	5,798.4	-488.5	417.2	642.3	0.28	0.11	-10.11

Company:	Anadarko, Weld County CO	Local Co-ordinate Reference:	Well Strear 6-10
Project:	SEC.10-T2N-R67W	TVD Reference:	WELL @ 4957.0ft (Original Well Elev)
Site:	Strear 18-10-9F Pad Sec.10-T2N-R67W	MD Reference:	WELL @ 4957.0ft (Original Well Elev)
Well:	Strear 6-10	North Reference:	True
Wellbore:	Wellbore #1	Survey Calculation Method:	Minimum Curvature
Design:	Wellbore #1	Database:	Landmark

Survey										
Measured Depth (ft)	Inclination (°)	Azimuth (°)	Vertical Depth (ft)	+N/-S (ft)	+E/-W (ft)	Vertical Section (ft)	Dogleg Rate (°/100ft)	Build Rate (°/100ft)	Turn Rate (°/100ft)	
5,958.0	1.20	58.10	5,894.4	-487.0	418.9	642.3	0.48	-0.31	15.73	
6,053.0	1.20	73.40	5,989.4	-486.2	420.7	642.9	0.34	0.00	16.11	
6,148.0	0.90	83.10	6,084.4	-485.8	422.4	643.8	0.37	-0.32	10.21	
6,243.0	0.50	65.50	6,179.4	-485.6	423.5	644.3	0.47	-0.42	-18.53	
6,338.0	0.40	47.30	6,274.4	-485.2	424.2	644.4	0.18	-0.11	-19.16	
6,433.0	0.40	25.20	6,369.4	-484.6	424.5	644.3	0.16	0.00	-23.26	
6,529.0	0.40	358.70	6,465.4	-484.0	424.7	643.9	0.19	0.00	-27.60	
6,624.0	0.40	4.70	6,560.4	-483.3	424.7	643.4	0.04	0.00	6.32	
6,719.0	0.60	338.50	6,655.4	-482.5	424.5	642.7	0.31	0.21	-27.58	
6,814.0	0.70	313.30	6,750.4	-481.7	423.9	641.7	0.32	0.11	-26.53	
6,906.0	0.60	308.10	6,842.4	-481.0	423.1	640.6	0.13	-0.11	-5.65	
7,004.0	0.60	292.80	6,940.3	-480.5	422.3	639.7	0.16	0.00	-15.61	
7,100.0	1.00	302.40	7,036.3	-479.8	421.1	638.4	0.44	0.42	10.00	
7,195.0	1.00	308.90	7,131.3	-478.9	419.8	636.8	0.12	0.00	6.84	
7,290.0	0.70	308.90	7,226.3	-478.0	418.7	635.4	0.32	-0.32	0.00	
7,313.5	0.63	307.79	7,249.8	-477.8	418.4	635.1	0.32	-0.32	-4.70	
TARGET CIRCLE 2130'FNL & 2130'FWL										
7,315.7	0.62	307.68	7,252.0	-477.8	418.4	635.1	0.32	-0.32	-5.32	
LEGAL BOX 400' X 400' 1974'FNL & 1966'FWL										
7,385.0	0.40	301.90	7,321.3	-477.5	417.9	634.5	0.32	-0.31	-8.34	
7,480.0	0.60	332.80	7,416.3	-476.8	417.4	633.7	0.35	0.21	32.53	
7,575.0	0.40	329.90	7,511.3	-476.1	417.0	632.9	0.21	-0.21	-3.05	
7,670.0	0.50	345.10	7,606.3	-475.4	416.7	632.2	0.16	0.11	16.00	
7,766.0	0.80	346.40	7,702.3	-474.4	416.5	631.3	0.31	0.31	1.35	
7,861.0	0.90	342.00	7,797.3	-473.0	416.1	630.0	0.13	0.11	-4.63	
7,956.0	0.70	348.00	7,892.3	-471.7	415.7	628.8	0.23	-0.21	6.32	
8,051.0	0.40	353.00	7,987.3	-470.8	415.6	628.0	0.32	-0.32	5.26	
8,100.0	0.30	323.70	8,036.3	-470.6	415.5	627.7	0.41	-0.20	-59.80	
8,150.0	0.30	323.70	8,086.3	-470.4	415.3	627.5	0.00	0.00	0.00	

Checked By: _____ Approved By: _____ Date: _____