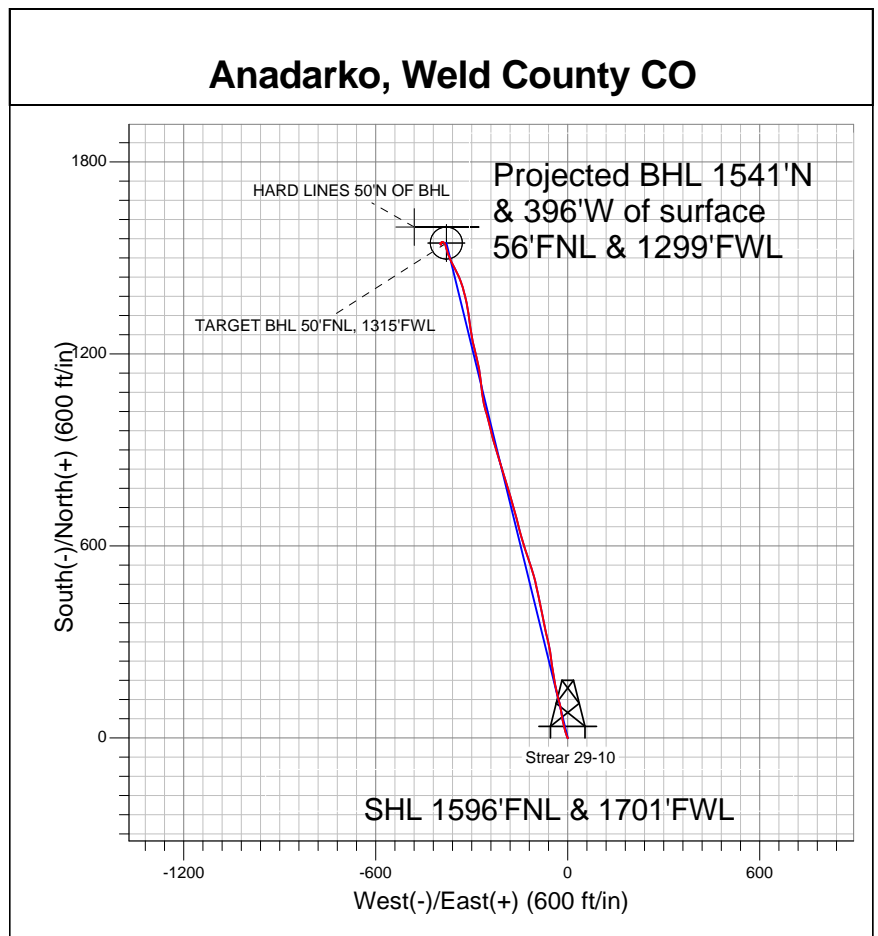
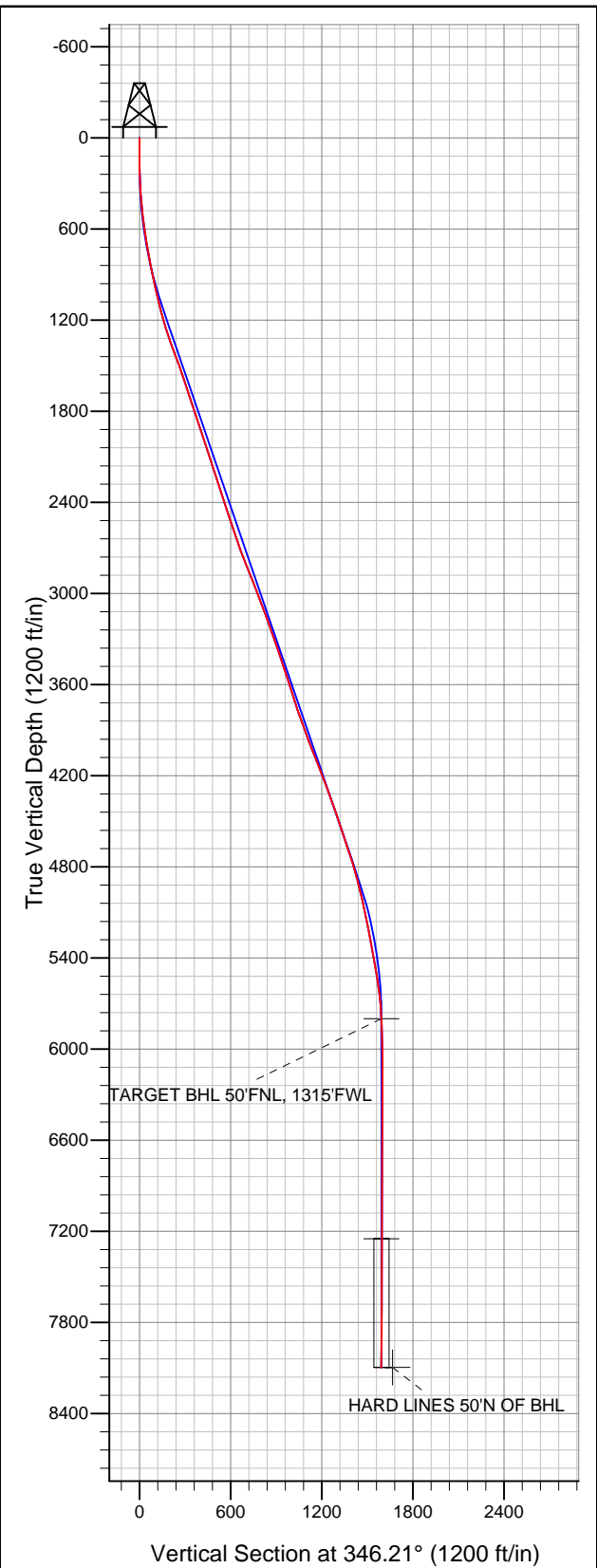




Well Name: **Strear 29-10**  
Surface Location: Strear 18-10-9F Pad Sec.10-T2N-R67W  
North American Datum 1983 US State Plane 1983 Colorado Northern Zone  
Ground Elevation: 4942.0  
+N/-S +E/-W Northing Easting Latitude Longitude Slot  
0.0 0.0 1300102.12 3173351.68 40.155511 -104.879807  
Original Well EleWELL @ 4957.0ft (Original Well Elev)



## Final Survey Plot

Projected Final Survey -  
8345'MD & 8098'TVD @ 1591' VS  
0.5 deg Inc 167.8 deg AZ

Project: SEC.10-T2N-R67W  
Site: Strear 18-10-9F Pad Sec.10-T2N-R67W  
Well: Strear 29-10  
Plan: Wellbore #1



## **Anadarko, Weld County CO**

**SEC.10-T2N-R67W**

**Strear 18-10-9F Pad Sec.10-T2N-R67W**

**Strear 29-10**

**Wellbore #1**

**Survey: Survey #1**

## **Standard Survey Report**

**22 September, 2011**



<b>Company:</b>	Anadarko, Weld County CO	<b>Local Co-ordinate Reference:</b>	Well Strear 29-10
<b>Project:</b>	SEC.10-T2N-R67W	<b>TVD Reference:</b>	WELL @ 4957.0ft (Original Well Elev)
<b>Site:</b>	Strear 18-10-9F Pad Sec.10-T2N-R67W	<b>MD Reference:</b>	WELL @ 4957.0ft (Original Well Elev)
<b>Well:</b>	Strear 29-10	<b>North Reference:</b>	True
<b>Wellbore:</b>	Wellbore #1	<b>Survey Calculation Method:</b>	Minimum Curvature
<b>Design:</b>	Wellbore #1	<b>Database:</b>	Landmark

<b>Project</b>	SEC.10-T2N-R67W, Weld County, Colorado		
<b>Map System:</b>	US State Plane 1983	<b>System Datum:</b>	Mean Sea Level
<b>Geo Datum:</b>	North American Datum 1983		Using Well Reference Point
<b>Map Zone:</b>	Colorado Northern Zone		Using geodetic scale factor

<b>Site</b>	Strear 18-10-9F Pad Sec.10-T2N-R67W		
<b>Site Position:</b>		<b>Northing:</b>	1,300,092.30ft
<b>From:</b>	Lat/Long	<b>Easting:</b>	3,173,351.75ft
<b>Position Uncertainty:</b>	0.0 ft	<b>Slot Radius:</b>	"
		<b>Latitude:</b>	40.155484
		<b>Longitude:</b>	-104.879807
		<b>Grid Convergence:</b>	0.40 °

<b>Well</b>	Strear 29-10		
<b>Well Position</b>	<b>+N/-S</b>	0.0 ft	<b>Northing:</b>
	<b>+E/-W</b>	0.0 ft	<b>Easting:</b>
<b>Position Uncertainty</b>	0.0 ft	<b>Wellhead Elevation:</b>	ft
		<b>Latitude:</b>	40.155511
		<b>Longitude:</b>	-104.879807
		<b>Ground Level:</b>	4,942.0 ft

<b>Wellbore</b>	Wellbore #1				
<b>Magnetics</b>	<b>Model Name</b>	<b>Sample Date</b>	<b>Declination (°)</b>	<b>Dip Angle (°)</b>	<b>Field Strength (nT)</b>
	IGRF2010	8/30/2011	8.88	66.83	52,967

<b>Design</b>	Wellbore #1				
<b>Audit Notes:</b>					
<b>Version:</b>	1.0	<b>Phase:</b>	ACTUAL	<b>Tie On Depth:</b>	0.0
<b>Vertical Section:</b>	<b>Depth From (TVD) (ft)</b>	<b>+N/-S (ft)</b>	<b>+E/-W (ft)</b>	<b>Direction (°)</b>	
	5,800.0	0.0	0.0	346.21	

<b>Survey Program</b>	<b>Date</b>	9/22/2011			
<b>From (ft)</b>	<b>To (ft)</b>	<b>Survey (Wellbore)</b>	<b>Tool Name</b>	<b>Description</b>	
148.0	8,345.0	Survey #1 (Wellbore #1)	MWD	MWD - Standard	

<b>Survey</b>										
<b>Measured Depth (ft)</b>	<b>Inclination (°)</b>	<b>Azimuth (°)</b>	<b>Vertical Depth (ft)</b>	<b>+N/-S (ft)</b>	<b>+E/-W (ft)</b>	<b>Vertical Section (ft)</b>	<b>Dogleg Rate (°/100ft)</b>	<b>Build Rate (°/100ft)</b>	<b>Turn Rate (°/100ft)</b>	
0.0	0.00	0.00	0.0	0.0	0.0	0.0	0.00	0.00	0.00	
148.0	0.30	238.60	148.0	-0.2	-0.3	-0.1	0.20	0.20	0.00	
236.0	1.40	337.40	236.0	0.7	-0.9	0.9	1.68	1.25	112.27	
328.0	3.20	339.00	327.9	4.1	-2.3	4.5	1.96	1.96	1.74	
420.0	4.90	340.20	419.7	10.2	-4.5	11.0	1.85	1.85	1.30	
512.0	6.50	344.10	511.2	18.9	-7.3	20.1	1.79	1.74	4.24	
604.0	8.20	346.70	602.5	30.3	-10.2	31.9	1.88	1.85	2.83	
656.0	8.90	347.30	653.9	37.8	-12.0	39.6	1.36	1.35	1.15	
726.0	9.60	347.30	723.0	48.8	-14.4	50.8	1.00	1.00	0.00	
819.0	10.60	349.90	814.5	64.8	-17.7	67.1	1.18	1.08	2.80	
913.0	12.30	351.20	906.7	83.2	-20.7	85.7	1.83	1.81	1.38	
1,008.0	12.80	348.50	999.4	103.5	-24.3	106.3	0.81	0.53	-2.84	
1,103.0	13.50	345.50	1,091.9	124.6	-29.2	127.9	1.03	0.74	-3.16	

<b>Company:</b>	Anadarko, Weld County CO	<b>Local Co-ordinate Reference:</b>	Well Strear 29-10
<b>Project:</b>	SEC.10-T2N-R67W	<b>TVD Reference:</b>	WELL @ 4957.0ft (Original Well Elev)
<b>Site:</b>	Strear 18-10-9F Pad Sec.10-T2N-R67W	<b>MD Reference:</b>	WELL @ 4957.0ft (Original Well Elev)
<b>Well:</b>	Strear 29-10	<b>North Reference:</b>	True
<b>Wellbore:</b>	Wellbore #1	<b>Survey Calculation Method:</b>	Minimum Curvature
<b>Design:</b>	Wellbore #1	<b>Database:</b>	Landmark

Survey										
Measured Depth (ft)	Inclination (°)	Azimuth (°)	Vertical Depth (ft)	+N/-S (ft)	+E/-W (ft)	Vertical Section (ft)	Dogleg Rate (°/100ft)	Build Rate (°/100ft)	Turn Rate (°/100ft)	
1,198.0	15.50	345.10	1,183.9	147.6	-35.3	151.7	2.11	2.11	-0.42	
1,293.0	18.20	350.10	1,274.8	174.5	-41.1	179.2	3.22	2.84	5.26	
1,388.0	20.10	352.20	1,364.5	205.2	-45.8	210.3	2.13	2.00	2.21	
1,484.0	20.40	351.50	1,454.6	238.1	-50.6	243.3	0.40	0.31	-0.73	
1,579.0	19.30	350.60	1,543.9	270.0	-55.6	275.5	1.20	-1.16	-0.95	
1,674.0	18.40	346.60	1,633.9	300.1	-61.6	306.1	1.66	-0.95	-4.21	
1,769.0	18.30	348.50	1,724.0	329.3	-68.1	336.0	0.64	-0.11	2.00	
1,864.0	18.50	348.50	1,814.2	358.7	-74.0	366.0	0.21	0.21	0.00	
1,960.0	18.20	348.70	1,905.3	388.3	-80.0	396.2	0.32	-0.31	0.21	
2,055.0	18.10	347.80	1,995.6	417.3	-86.0	425.7	0.31	-0.11	-0.95	
2,150.0	18.50	348.10	2,085.8	446.4	-92.3	455.6	0.43	0.42	0.32	
2,245.0	17.80	347.80	2,176.0	475.4	-98.4	485.1	0.74	-0.74	-0.32	
2,342.0	18.40	344.10	2,268.2	504.6	-105.8	515.3	1.34	0.62	-3.81	
2,437.0	18.20	342.20	2,358.4	533.1	-114.4	545.0	0.66	-0.21	-2.00	
2,533.0	18.00	341.10	2,449.7	561.4	-123.8	574.8	0.41	-0.21	-1.15	
2,628.0	18.10	341.50	2,540.0	589.3	-133.2	604.1	0.17	0.11	0.42	
2,723.0	18.30	343.90	2,630.2	617.7	-142.1	633.7	0.82	0.21	2.53	
2,818.0	21.10	345.40	2,719.7	648.5	-150.5	665.7	2.99	2.95	1.58	
2,914.0	22.20	344.80	2,808.9	682.8	-159.6	701.1	1.17	1.15	-0.63	
3,009.0	21.90	344.30	2,897.0	717.1	-169.1	736.8	0.37	-0.32	-0.53	
3,104.0	21.00	344.80	2,985.4	750.6	-178.4	771.5	0.97	-0.95	0.53	
3,199.0	19.20	343.40	3,074.6	782.0	-187.3	804.1	1.96	-1.89	-1.47	
3,294.0	20.60	343.70	3,163.9	813.0	-196.4	836.4	1.48	1.47	0.32	
3,390.0	20.40	341.30	3,253.8	845.1	-206.6	870.0	0.90	-0.21	-2.50	
3,485.0	18.80	342.20	3,343.3	875.4	-216.5	901.7	1.71	-1.68	0.95	
3,580.0	18.00	345.90	3,433.5	904.2	-224.8	931.7	1.49	-0.84	3.89	
3,675.0	17.90	342.70	3,523.9	932.3	-232.7	960.9	1.04	-0.11	-3.37	
3,770.0	18.00	346.70	3,614.2	960.6	-240.4	990.2	1.30	0.11	4.21	
3,865.0	17.70	346.60	3,704.7	988.9	-247.2	1,019.3	0.32	-0.32	-0.11	
3,960.0	19.90	342.70	3,794.6	1,018.4	-255.3	1,049.9	2.67	2.32	-4.11	
4,055.0	19.60	348.70	3,884.0	1,049.5	-263.2	1,082.0	2.16	-0.32	6.32	
4,151.0	20.40	354.80	3,974.2	1,081.9	-267.9	1,114.6	2.33	0.83	6.35	
4,246.0	21.90	351.70	4,062.8	1,115.9	-272.0	1,148.6	1.97	1.58	-3.26	
4,341.0	22.10	351.10	4,150.9	1,151.1	-277.3	1,184.0	0.32	0.21	-0.63	
4,436.0	20.80	346.40	4,239.3	1,185.2	-284.0	1,218.7	2.27	-1.37	-4.95	
4,531.0	19.20	345.90	4,328.6	1,216.7	-291.8	1,251.2	1.69	-1.68	-0.53	
4,626.0	20.00	349.00	4,418.1	1,247.8	-298.7	1,283.1	1.38	0.84	3.26	
4,721.0	18.30	351.30	4,507.8	1,278.5	-304.1	1,314.1	1.96	-1.79	2.42	
4,817.0	18.10	353.90	4,599.0	1,308.2	-307.9	1,343.9	0.87	-0.21	2.71	
4,912.0	19.00	350.20	4,689.1	1,338.2	-312.1	1,374.0	1.56	0.95	-3.89	
5,007.0	16.40	347.60	4,779.6	1,366.5	-317.6	1,402.8	2.86	-2.74	-2.74	
5,102.0	16.10	344.80	4,870.8	1,392.3	-324.0	1,429.4	0.88	-0.32	-2.95	
5,197.0	13.50	341.80	4,962.7	1,415.6	-330.9	1,453.6	2.85	-2.74	-3.16	
5,292.0	11.90	337.90	5,055.3	1,435.2	-338.0	1,474.4	1.91	-1.68	-4.11	
5,387.0	12.20	335.10	5,148.2	1,453.3	-346.0	1,493.9	0.69	0.32	-2.95	
5,482.0	10.90	329.90	5,241.3	1,470.2	-354.7	1,512.4	1.75	-1.37	-5.47	
5,577.0	10.40	332.10	5,334.7	1,485.6	-363.2	1,529.3	0.68	-0.53	2.32	
5,672.0	10.60	342.20	5,428.1	1,501.5	-369.9	1,546.4	1.95	0.21	10.63	
5,768.0	8.80	340.80	5,522.7	1,516.8	-375.0	1,562.5	1.89	-1.88	-1.46	
5,863.0	7.50	341.80	5,616.8	1,529.6	-379.3	1,575.9	1.38	-1.37	1.05	
5,958.0	5.10	347.80	5,711.2	1,539.6	-382.2	1,586.3	2.62	-2.53	6.32	
6,047.0	2.91	322.77	5,800.0	1,545.3	-384.4	1,592.3	3.09	-2.46	-28.12	
TARGET BHL 50'FNL, 1315'FWL										
6,053.0	2.80	319.80	5,806.0	1,545.5	-384.5	1,592.6	3.09	-1.86	-49.60	

<b>Company:</b>	Anadarko, Weld County CO	<b>Local Co-ordinate Reference:</b>	Well Strear 29-10
<b>Project:</b>	SEC.10-T2N-R67W	<b>TVD Reference:</b>	WELL @ 4957.0ft (Original Well Elev)
<b>Site:</b>	Strear 18-10-9F Pad Sec.10-T2N-R67W	<b>MD Reference:</b>	WELL @ 4957.0ft (Original Well Elev)
<b>Well:</b>	Strear 29-10	<b>North Reference:</b>	True
<b>Wellbore:</b>	Wellbore #1	<b>Survey Calculation Method:</b>	Minimum Curvature
<b>Design:</b>	Wellbore #1	<b>Database:</b>	Landmark

Survey										
Measured Depth (ft)	Inclination (°)	Azimuth (°)	Vertical Depth (ft)	+N/-S (ft)	+E/-W (ft)	Vertical Section (ft)	Dogleg Rate (°/100ft)	Build Rate (°/100ft)	Turn Rate (°/100ft)	
6,148.0	1.80	316.10	5,900.9	1,548.3	-387.1	1,596.0	1.06	-1.05	-3.89	
6,243.0	2.40	290.30	5,995.8	1,550.1	-390.0	1,598.4	1.16	0.63	-27.16	
6,339.0	0.70	241.00	6,091.8	1,550.5	-392.4	1,599.3	2.10	-1.77	-51.35	
6,434.0	0.60	265.20	6,186.8	1,550.2	-393.4	1,599.3	0.30	-0.11	25.47	
6,529.0	0.40	215.20	6,281.8	1,549.9	-394.1	1,599.1	0.48	-0.21	-52.63	
6,624.0	0.40	195.60	6,376.8	1,549.3	-394.3	1,598.6	0.14	0.00	-20.63	
6,719.0	0.30	208.00	6,471.8	1,548.7	-394.6	1,598.2	0.13	-0.11	13.05	
6,814.0	0.40	219.10	6,566.8	1,548.3	-394.9	1,597.8	0.13	0.11	11.68	
6,910.0	0.40	220.50	6,662.8	1,547.8	-395.3	1,597.4	0.01	0.00	1.46	
7,005.0	0.40	241.10	6,757.8	1,547.3	-395.8	1,597.1	0.15	0.00	21.68	
7,100.0	0.40	240.70	6,852.8	1,547.0	-396.4	1,596.9	0.00	0.00	-0.42	
7,195.0	0.40	231.10	6,947.8	1,546.7	-396.9	1,596.7	0.07	0.00	-10.11	
7,290.0	0.40	242.70	7,042.7	1,546.3	-397.5	1,596.5	0.09	0.00	12.21	
7,385.0	0.60	256.40	7,137.7	1,546.0	-398.3	1,596.4	0.24	0.21	14.42	
7,481.0	0.40	246.50	7,233.7	1,545.8	-399.1	1,596.3	0.23	-0.21	-10.31	
7,496.2	0.33	238.31	7,249.0	1,545.7	-399.2	1,596.3	0.58	-0.47	-53.82	
TARGET CIRCLE 50'FNL & 1315'FWL										
7,576.0	0.30	143.00	7,328.7	1,545.4	-399.2	1,596.1	0.58	-0.04	-119.47	
7,671.0	0.40	129.50	7,423.7	1,545.0	-398.8	1,595.6	0.14	0.11	-14.21	
7,766.0	0.50	129.50	7,518.7	1,544.6	-398.2	1,595.0	0.11	0.11	0.00	
7,861.0	0.60	102.60	7,613.7	1,544.2	-397.4	1,594.4	0.29	0.11	-28.32	
7,956.0	0.40	106.10	7,708.7	1,544.0	-396.6	1,594.0	0.21	-0.21	3.68	
8,052.0	0.40	149.00	7,804.7	1,543.6	-396.1	1,593.5	0.30	0.00	44.69	
8,147.0	0.50	167.80	7,899.7	1,542.9	-395.9	1,592.8	0.19	0.11	19.79	
8,342.7	0.50	167.80	8,095.4	1,541.2	-395.5	1,591.1	0.00	0.00	0.00	
HARD LINES 50'N OF BHL										
8,345.0	0.50	167.80	8,097.7	1,541.2	-395.5	1,591.1	0.00	0.00	0.00	

Checked By: \_\_\_\_\_ Approved By: \_\_\_\_\_ Date: \_\_\_\_\_