



Kerr-McGee Oil & Gas Onshore LP

1099 18th Street, Suite 1800
Denver, CO 80202-1918
P.O. Box 173779
Denver, CO 80217-3779
720-929-6000

January 9, 2012

Department of Natural Resources
Oil and Gas Conservation Commission
The Chancery Building
1120 Lincoln St., Suite 801
Denver, CO 80203

Re: **30 Day Certification Letter - 318A-e**
SADDLEBACK 31-29
Township 2 North, Range 67 West, Section 29: NW/4NW/4
Unit Spacing: 02N-67W-29 W/2NW/4; 02N-67W-30 E/2NE/4
Weld County, Colorado

Ladies/Gentlemen:

Kerr-McGee Oil and Gas Onshore LP ("KMG") hereby certifies to the Director that a thirty (30) day notice has been given by certified mail to all owners in the proposed wellbore spacing unit. We have not received any objections to such well location, proposed spacing unit, or additional producing formation. KMG hereby requests the Director to approve the boundary well.

If you have any questions or issues regarding this permit, please contact Cheryl Light at (720) 929-6461.

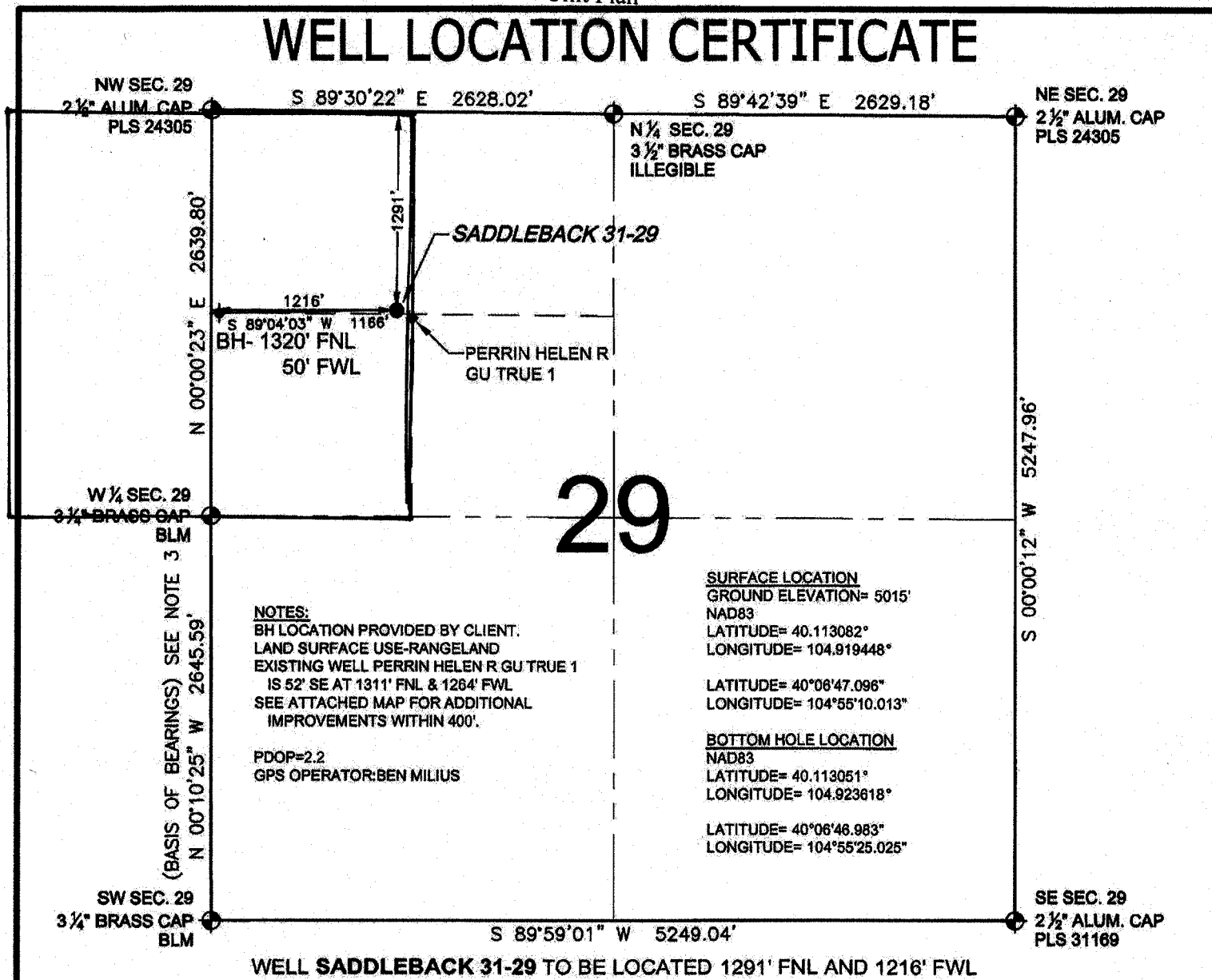
Very truly yours,

KERR-McGEE OIL AND GAS ONSHORE LP

A handwritten signature in cursive script, reading 'Rebecca Heim'.

Rebecca Heim
Regulatory Analyst II

WELL LOCATION CERTIFICATE



NOTES:
BH LOCATION PROVIDED BY CLIENT.
LAND SURFACE USE-RANGELAND
EXISTING WELL PERRIN HELEN R GU TRUE 1
IS 52' SE AT 1311' FNL & 1264' FWL
SEE ATTACHED MAP FOR ADDITIONAL
IMPROVEMENTS WITHIN 400'.

PDOP=2.2
GPS OPERATOR: BEN MILIUS

SURFACE LOCATION
GROUND ELEVATION= 5015'
NAD83
LATITUDE= 40.113082°
LONGITUDE= 104.919448°

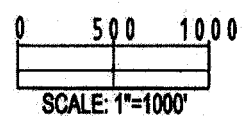
LATITUDE= 40°06'47.096"
LONGITUDE= 104°55'10.013"

BOTTOM HOLE LOCATION
NAD83
LATITUDE= 40.113051°
LONGITUDE= 104.923618°

LATITUDE= 40°06'48.983"
LONGITUDE= 104°55'25.025"

LEGEND

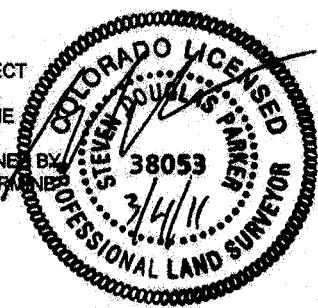
- ⊕ = EXISTING MONUMENT
- ⊙ = PROPOSED WELL
- ⊕ = BOTTOM HOLE
- ⊙ = EXISTING WELL
- BH = BOTTOM HOLE



NOTES:

- THIS FIELD SURVEY CONFORMS TO THE MINIMUM STANDARDS SET BY THE C.O.G.C.C., RULE NO. 215
- HORIZONTAL POSITIONS AND ORTHOMETRIC ELEVATIONS SHOWN AT THE WELL HEAD, ARE BASED ON GPS-RTK POSITIONS DERIVED FROM MINIMUM 2-HOUR STATIC OBSERVATIONS CORRECTED BY THE NATIONAL GEODETIC SURVEY ONLINE POSITIONING USER SERVICE, O.P.U.S. DATUM: HORIZONTAL = NAD83/2007, VERTICAL = NAVD88
- THE BASIS OF BEARINGS ARE STATE PLANE COORDINATE SYSTEM GRID BEARINGS SHOWN HEREON BETWEEN THE DESCRIBED THE MONUMENTS SHOWN HEREON.
- GRID DISTANCES ARE SHOWN, AS MEASURED IN THE FIELD, WITH TIES TO WELLS MEASURED PERPENDICULAR TO SECTION LINES.

I, STEVEN D. PARKER, A LICENSED PROFESSIONAL LAND SURVEYOR IN THE STATE OF COLORADO DO HEREBY CERTIFY TO **KERR-MCGEE OIL & GAS ONSHORE LP**, THAT THE SURVEY AND WELL LOCATION CERTIFICATE SHOWN HEREON WERE DONE BY ME OR UNDER MY DIRECT SUPERVISION AND THAT THE DRAWING SHOWN HEREON ACCURATELY DEPICTS THE PROPOSED LOCATION OF THE WELL. THIS CERTIFICATE DOES NOT REPRESENT A LAND SURVEY PLAT OR IMPROVEMENT SURVEY PLAT AS DEFINED BY C.R.S. 38-51-102 AND CANNOT BE RELIED UPON TO DETERMINE OWNERSHIP.



STEVEN D. PARKER, PLS 38053
COLORADO LICENSED PROFESSIONAL LAND SURVEYOR
FOR AND ON BEHALF OF P.F.S., LLC

PREPARED BY: PFS Petroleum Field Services, LLC 1001 W. 13th Ave. Denver, CO 80204	FIELD DATE: 02-24-11	SURFACE LOCATION: NW 1/4 NW 1/4, SEC. 29, T2N, R67W
	DRAWING DATE: 03-02-11	
	BY: SMF	WELD COUNTY, COLORADO

NOTICE: ACCORDING TO COLORADO LAW YOU MUST COMMENCE ANY LEGAL ACTION BASED UPON ANY DEFECT IN THIS SURVEY WITHIN THREE YEARS AFTER YOU FIRST DISCOVER SUCH DEFECT. IN NO EVENT MAY ANY ACTION BASED UPON ANY DEFECT IN THIS SURVEY BE COMMENCED MORE THAN TEN YEARS FROM THIS SAID DATE OF THIS CERTIFICATION SHOWN HEREON.