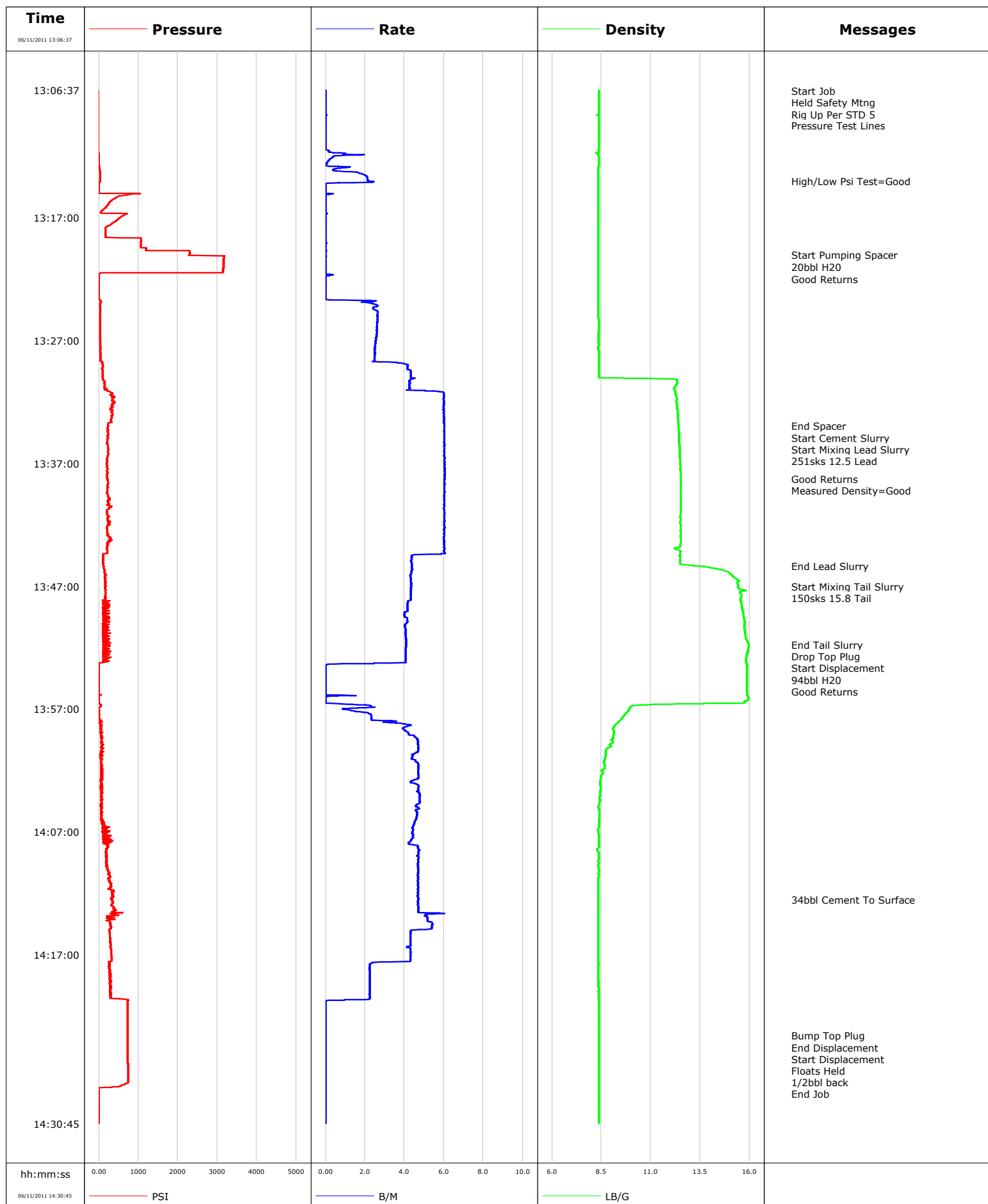


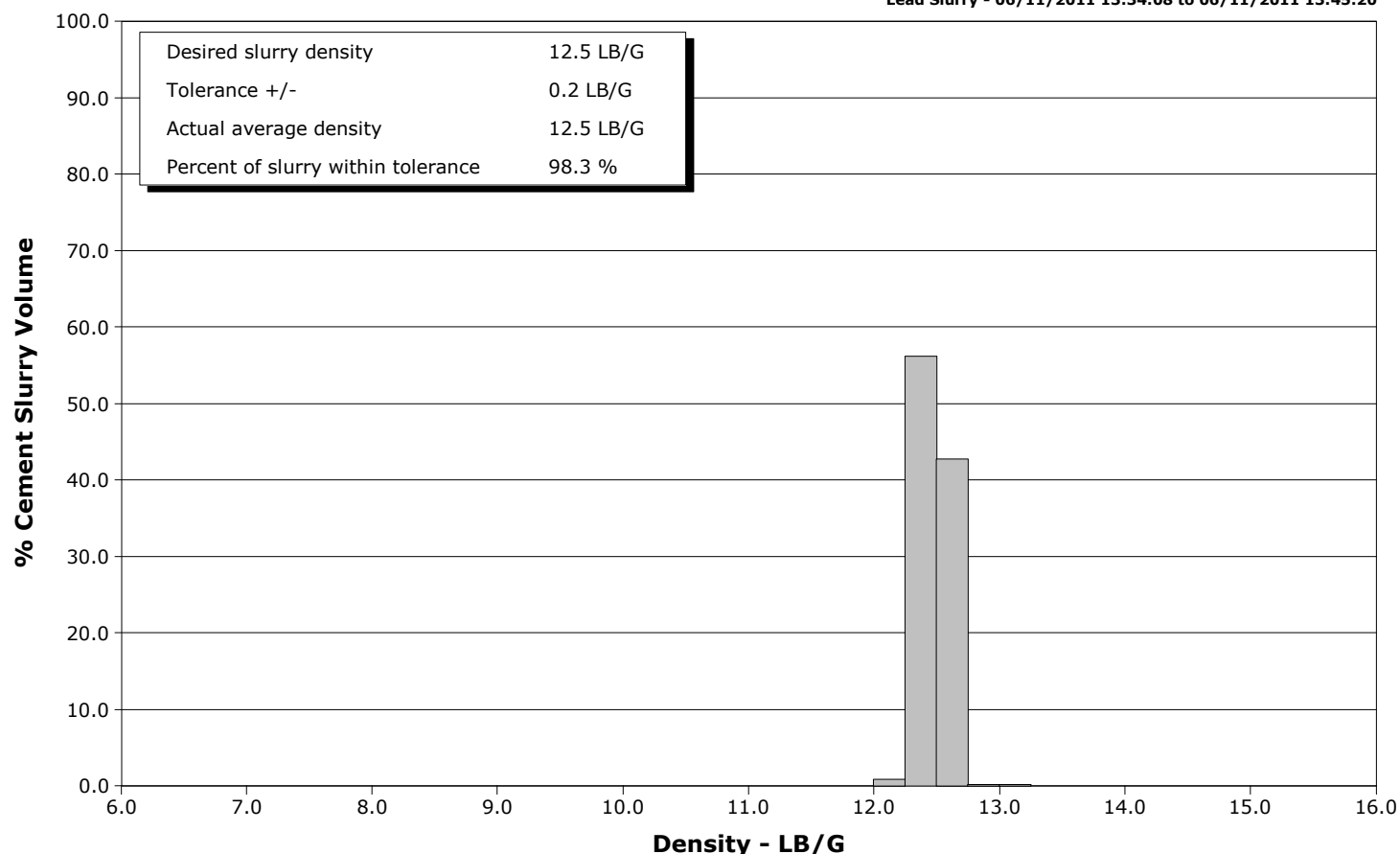
Well	DAYBREAK FEDERAL 19-8BB	Client	Encana
Field	PARACHUTE	SIR No.	BRTW-00047
Engineer	Michael Franklin	Job Type	9 5/8 Surface
Country	United States	Job Date	06-11-2011



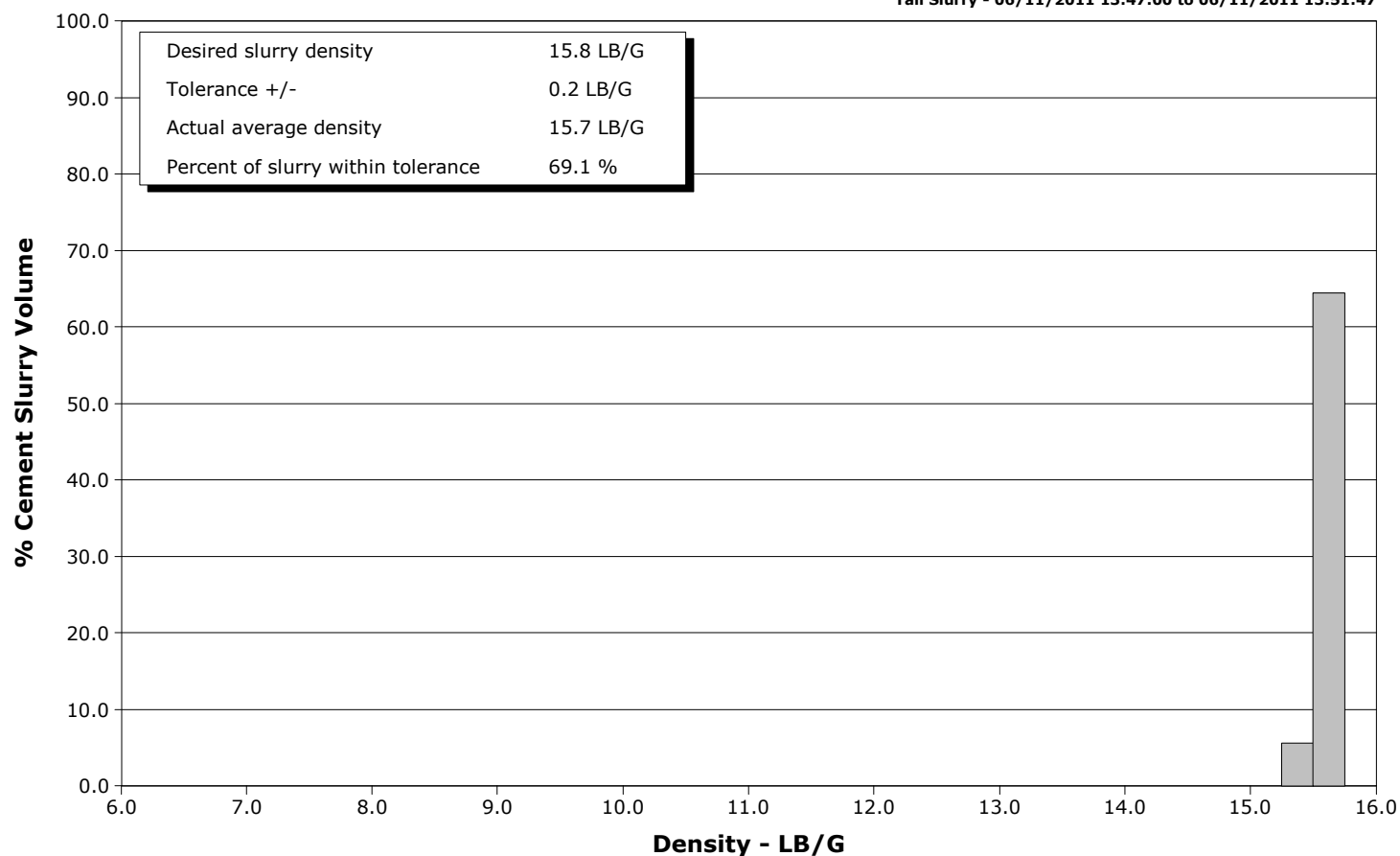
Well DAYBREAK FEDERAL 19-8BB
Field PARACHUTE
Engineer Michael Franklin
Country United States

Client Encana
SIR No. BRTW-00047
Job Type 9 5/8 Surface
Job Date 06-11-2011

Lead Slurry - 06/11/2011 13:34:08 to 06/11/2011 13:45:20



Tail Slurry - 06/11/2011 13:47:00 to 06/11/2011 13:51:47



Cementing Service Report

				Customer Encana				Job Number BRTW-00047										
Well DAYBREAK FEDERAL 19-8BB 19-8BB				Location (legal) PJ19				Schlumberger Location Grand Junction				Job Start Jun/11/2011						
Field PARACHUTE			Formation Name/Type Shale			Deviation 0 deg		Bit Size 12.3 in		Well MD 1265.0 ft		Well TVD 1265.0 ft						
County Garfield			State/Province Colorado			BHP psi		BHST 95 degF		BHCT 80 degF		Pore Press. Gradient lb/gal						
Well Master 0631209443			API/UWI															
Rig Name Nabors M15		Drilled For Gas		Service Via Land		Casing/Liner												
						Depth, ft		Size, in		Weight, lb/ft		Grade		Thread				
Offshore Zone		Well Class New		Well Type Development		40.0		16.0		65.0								
						1265.0		9.6		36.0		J55		8RD				
Drilling Fluid Type Bentonite			Max. Density 8.80 lb/gal		Plastic Viscosity cP		Tubing/Drill Pipe											
							T/D		Depth, ft		Size, in		Weight, lb/ft		Grade		Thread	
Service Line Cementing		Job Type 9 5/8 Surface																
Max. Allowed Tub. Press psi		Max. Allowed Ann. Press psi			WH Connection 9 5/8 Single			Perforations/Open Hole										
								Top, ft		Bottom, ft		shot/ft		No. of Shots		Total Interval ft		
								ft		ft						Diameter in		
								ft		ft								
Service Instructions 9 5/8 Surface @ 1265' 20bbl H2O 251skts 12.5 Lead 150 sks 15.8 Tail								Treat Down Casing		Displacement 98.0 bbl		Packer Type		Packer Depth ft				
								Tubing Vol. bbl		Casing Vol. 98.0 bbl		Annular Vol. 74.0 bbl		Openhole Vol. 175.0 bbl				
Casing/Tubing Secured <input checked="" type="checkbox"/>			1 Hole Vol. Circulated prior to Cement <input checked="" type="checkbox"/>			Casing Tools				Squeeze Job								
Lift Pressure 626 psi				Shoe Type Float				Squeeze Type										
Pipe Rotated <input type="checkbox"/>			Pipe Reciprocated <input type="checkbox"/>			Shoe Depth 1265.0 ft				Tool Type								
No. Centralizers 15			Top Plugs 1		Bottom Plugs		Stage Tool Type				Tool Depth ft							
Cement Head Type Single						Stage Tool Depth ft				Tail Pipe Size in								
Job Scheduled For Jun/10/2011 22:00			Arrived on Location Jun/10/2011 20:00			Leave Location Jun/11/2011 11:00			Collar Type				Tail Pipe Depth ft					
									Collar Depth ft				Sqz. Total Vol. bbl					
Date	Time 24-hr clock	Treating Pressure PSI	Flow Rate B/M	Density LB/G	Volume BBL	Message												
06/11/2011	13:06:37	-15	0.0	8.36	0.0	Started Acquisition												
06/11/2011	13:06:40	-15	0.0	8.36	0.0	Start Job												
06/11/2011	13:06:41	-15	0.0	8.36	0.0	Held Safety Mtng												
06/11/2011	13:06:42	-14	0.0	8.36	0.0	Rig Up Per STD 5												
06/11/2011	13:06:47	-15	0.0	8.36	0.0	Pressure Test Lines												
06/11/2011	13:07:07	-15	0.0	8.36	0.0													
06/11/2011	13:07:37	-15	0.0	8.36	0.0													
06/11/2011	13:08:07	-15	0.0	8.36	0.0													
06/11/2011	13:08:37	-14	0.1	8.36	0.0													
06/11/2011	13:09:07	-14	0.0	8.36	0.0													
06/11/2011	13:09:37	-14	0.0	8.36	0.0													
06/11/2011	13:10:07	-15	0.0	8.36	0.0													
06/11/2011	13:10:37	-14	0.0	8.35	0.0													
06/11/2011	13:11:07	-14	0.0	8.36	0.0													
06/11/2011	13:11:37	-13	0.2	8.36	0.1													
06/11/2011	13:12:07	-9	0.4	8.36	0.4													
06/11/2011	13:12:37	-4	0.1	8.36	0.5													
06/11/2011	13:13:07	17	0.4	8.35	0.8													
06/11/2011	13:13:37	28	2.1	8.35	1.5													
06/11/2011	13:14:00	34	2.2	8.35	2.3	High/Low Psi Test=Good												
06/11/2011	13:14:07	12	2.4	8.35	2.6													

Well			Field		Job Start		Customer		Job Number	
DAYBREAK FEDERAL 19-8BB 19-8BB			PARACHUTE		Jun/11/2011		Encana		BRTW-00047	
Date	Time 24-hr clock	Treating Pressure PSI		Flow Rate B/M	Density LB/G		Volume BBL		Message	
06/11/2011	13:15:07	774		0.1	8.35		2.7			
06/11/2011	13:15:37	321		0.0	8.35		2.7			
06/11/2011	13:16:07	191		0.0	8.35		2.7			
06/11/2011	13:16:37	43		0.0	8.35		2.7			
06/11/2011	13:17:07	491		0.0	8.35		2.7			
06/11/2011	13:17:37	285		0.0	8.35		2.7			
06/11/2011	13:18:07	167		0.0	8.35		2.7			
06/11/2011	13:18:37	169		0.0	8.35		2.7			
06/11/2011	13:19:07	1060		0.0	8.35		2.7			
06/11/2011	13:19:37	1192		0.0	8.35		2.7			
06/11/2011	13:20:00	2289		0.0	8.35		2.7		Start Pumping Spacer	
06/11/2011	13:20:07	3195		0.0	8.35		2.7			
06/11/2011	13:20:37	3154		0.0	8.35		2.7			
06/11/2011	13:21:00	3152		0.0	8.35		2.7		20bbl H2O	
06/11/2011	13:21:07	3152		0.0	8.35		2.7			
06/11/2011	13:21:37	-9		0.2	8.35		2.7			
06/11/2011	13:22:00	-0		0.0	8.35		2.8		Good Returns	
06/11/2011	13:22:07	-0		0.0	8.35		2.8			
06/11/2011	13:22:37	-1		0.0	8.35		2.8			
06/11/2011	13:23:07	-1		0.0	8.35		2.8			
06/11/2011	13:23:37	-1		0.0	8.35		2.8			
06/11/2011	13:24:07	30		2.6	8.35		3.7			
06/11/2011	13:24:37	34		2.6	8.35		4.9			
06/11/2011	13:25:07	35		2.6	8.35		6.3			
06/11/2011	13:25:37	33		2.6	8.36		7.6			
06/11/2011	13:26:07	33		2.6	8.36		8.9			
06/11/2011	13:26:37	35		2.6	8.35		10.2			
06/11/2011	13:27:07	36		2.5	8.35		11.4			
06/11/2011	13:27:37	39		2.5	8.35		12.7			
06/11/2011	13:28:07	39		2.5	8.38		14.0			
06/11/2011	13:28:37	39		2.5	8.36		15.2			
06/11/2011	13:29:07	100		4.2	8.36		17.0			
06/11/2011	13:29:37	89		4.3	8.36		19.1			
06/11/2011	13:30:07	98		4.4	11.78		21.3			
06/11/2011	13:30:37	146		4.3	12.29		23.4			
06/11/2011	13:31:07	216		5.4	12.23		25.6			
06/11/2011	13:31:37	335		6.0	12.30		28.5			
06/11/2011	13:32:07	357		6.0	12.31		31.5			
06/11/2011	13:32:37	332		6.0	12.34		34.5			
06/11/2011	13:33:07	318		6.0	12.37		37.5			
06/11/2011	13:33:37	326		6.0	12.39		40.5			
06/11/2011	13:33:57	243		6.0	12.40		42.5		End Spacer	
06/11/2011	13:34:06	218		6.0	12.41		43.4		Start Cement Slurry	
06/11/2011	13:34:07	229		6.0	12.41		43.5			
06/11/2011	13:34:08	215		6.0	12.41		43.6		Start Mixing Lead Slurry	
06/11/2011	13:34:30	223		6.0	12.43		45.8		251sks 12.5 Lead	
06/11/2011	13:34:37	235		6.0	12.43		46.5			
06/11/2011	13:35:07	210		6.0	12.44		49.5			
06/11/2011	13:35:37	228		6.0	12.45		52.5			
06/11/2011	13:36:07	228		6.0	12.47		55.6			
06/11/2011	13:36:37	213		6.0	12.47		58.6			
06/11/2011	13:37:07	203		6.0	12.49		61.6			
06/11/2011	13:37:37	213		6.0	12.50		64.6			
06/11/2011	13:38:07	209		6.0	12.51		67.6			

Well			Field		Job Start		Customer		Job Number	
DAYBREAK FEDERAL 19-8BB 19-8BB			PARACHUTE		Jun/11/2011		Encana		BRTW-00047	
Date	Time 24-hr clock	Treating Pressure PSI		Flow Rate B/M	Density LB/G		Volume BBL		Message	
06/11/2011	13:38:37	227		6.0	12.51		70.6			
06/11/2011	13:39:07	220		6.0	12.51		73.6			
06/11/2011	13:39:37	241		6.0	12.51		76.6			
06/11/2011	13:40:07	217		6.0	12.51		79.6			
06/11/2011	13:40:37	275		6.0	12.52		82.7			
06/11/2011	13:41:07	228		6.0	12.50		85.7			
06/11/2011	13:41:37	226		6.0	12.50		88.7			
06/11/2011	13:42:07	216		6.0	12.50		91.7			
06/11/2011	13:42:37	211		6.0	12.50		94.7			
06/11/2011	13:43:07	291		6.0	12.50		97.7			
06/11/2011	13:43:37	215		6.0	12.49		100.7			
06/11/2011	13:44:07	215		6.0	12.49		103.7			
06/11/2011	13:44:37	111		4.4	12.49		106.4			
06/11/2011	13:45:07	105		4.4	12.49		108.6			
06/11/2011	13:45:20	120		4.4	13.13		109.5		End Lead Slurry	
06/11/2011	13:45:37	136		4.4	14.41		110.8			
06/11/2011	13:46:07	188		4.3	15.11		112.9			
06/11/2011	13:46:37	155		4.3	15.46		115.1			
06/11/2011	13:47:00	173		4.3	15.43		116.8		Start Mixing Tail Slurry	
06/11/2011	13:47:07	156		4.3	15.44		117.3			
06/11/2011	13:47:30	166		4.3	15.50		118.9		150sks 15.8 Tail	
06/11/2011	13:47:37	189		4.3	15.54		119.4			
06/11/2011	13:48:07	159		4.3	15.54		121.6			
06/11/2011	13:48:37	275		4.2	15.60		123.7			
06/11/2011	13:49:07	125		4.0	15.67		125.8			
06/11/2011	13:49:37	170		4.1	15.72		127.8			
06/11/2011	13:50:07	259		4.0	15.75		129.8			
06/11/2011	13:50:37	114		4.1	15.76		131.8			
06/11/2011	13:51:07	273		4.1	15.80		133.9			
06/11/2011	13:51:37	298		4.1	15.91		135.9			
06/11/2011	13:51:47	181		4.1	15.97		136.6		End Tail Slurry	
06/11/2011	13:51:50	173		4.1	15.97		136.8		Drop Top Plug	
06/11/2011	13:51:51	112		4.1	15.97		136.9		Start Displacement	
06/11/2011	13:51:53	272		4.1	15.97		137.0		94bbl H2O	
06/11/2011	13:52:07	110		4.1	15.93		137.9			
06/11/2011	13:52:37	278		4.1	15.86		140.0			
06/11/2011	13:53:07	109		4.1	15.82		142.0			
06/11/2011	13:53:37	-4		0.0	15.87		142.8			
06/11/2011	13:54:07	-5		0.0	15.87		142.8			
06/11/2011	13:54:37	-7		0.0	15.86		142.8			
06/11/2011	13:55:07	-6		0.0	15.86		142.8			
06/11/2011	13:55:37	-8		0.0	15.86		142.8			
06/11/2011	13:56:07	-6		0.0	15.95		142.9			
06/11/2011	13:56:37	34		1.1	11.84		142.9			
06/11/2011	13:57:07	-1		1.3	9.87		143.8			
06/11/2011	13:57:37	12		2.3	9.61		144.8			
06/11/2011	13:58:07	45		3.3	9.34		146.1			
06/11/2011	13:58:37	61		3.9	9.08		148.1			
06/11/2011	13:59:07	58		4.2	9.12		150.2			
06/11/2011	13:59:37	62		4.7	9.06		152.5			
06/11/2011	14:00:07	61		4.7	8.92		154.8			
06/11/2011	14:00:37	43		4.5	8.71		157.1			
06/11/2011	14:01:07	53		4.4	8.68		159.4			
06/11/2011	14:01:37	58		4.7	8.66		161.7			

Well DAYBREAK FEDERAL 19-8BB 19-8BB			Field PARACHUTE		Job Start Jun/11/2011		Customer Encana		Job Number BRTW-00047	
Date	Time 24-hr clock	Treating Pressure PSI		Flow Rate B/M	Density LB/G		Volume BBL		Message	
06/11/2011	14:02:37	56		4.7	8.48		166.4			
06/11/2011	14:03:07	68		4.6	8.44		168.6			
06/11/2011	14:03:37	57		4.7	8.45		171.0			
06/11/2011	14:04:07	86		4.8	8.43		173.3			
06/11/2011	14:04:37	64		4.8	8.39		175.7			
06/11/2011	14:05:07	83		4.7	8.37		178.0			
06/11/2011	14:05:37	81		4.6	8.39		180.4			
06/11/2011	14:06:07	74		4.5	8.36		182.7			
06/11/2011	14:06:37	203		4.4	8.36		184.9			
06/11/2011	14:07:07	94		4.4	8.36		187.1			
06/11/2011	14:07:37	171		4.3	8.36		189.3			
06/11/2011	14:08:07	225		4.7	8.36		191.5			
06/11/2011	14:08:37	195		4.7	8.35		193.8			
06/11/2011	14:09:07	196		4.7	8.36		196.2			
06/11/2011	14:09:37	189		4.7	8.35		198.5			
06/11/2011	14:10:07	239		4.7	8.36		200.9			
06/11/2011	14:10:37	280		4.7	8.35		203.2			
06/11/2011	14:11:07	273		4.7	8.35		205.5			
06/11/2011	14:11:37	304		4.7	8.34		207.9			
06/11/2011	14:12:07	327		4.7	8.35		210.2			
06/11/2011	14:12:30	307		4.7	8.35		212.0		34bbl Cement To Surface	
06/11/2011	14:12:37	340		4.7	8.35		212.6			
06/11/2011	14:13:07	377		4.7	8.35		214.9			
06/11/2011	14:13:37	611		5.2	8.35		217.3			
06/11/2011	14:14:07	354		5.2	8.35		219.9			
06/11/2011	14:14:37	316		5.4	8.35		222.5			
06/11/2011	14:15:07	273		4.3	8.35		225.1			
06/11/2011	14:15:37	286		4.3	8.35		227.2			
06/11/2011	14:16:07	298		4.3	8.35		229.4			
06/11/2011	14:16:37	308		4.3	8.35		231.5			
06/11/2011	14:17:07	322		4.3	8.35		233.7			
06/11/2011	14:17:37	260		2.8	8.35		235.8			
06/11/2011	14:18:07	294		2.2	8.35		236.9			
06/11/2011	14:18:37	283		2.2	8.35		238.0			
06/11/2011	14:19:07	309		2.2	8.35		239.1			
06/11/2011	14:19:37	284		2.2	8.35		240.2			
06/11/2011	14:20:07	319		2.2	8.35		241.4			
06/11/2011	14:20:37	514		2.2	8.35		242.5			
06/11/2011	14:21:07	726		0.0	8.35		242.7			
06/11/2011	14:21:37	727		0.0	8.35		242.7			
06/11/2011	14:22:07	728		0.0	8.35		242.7			
06/11/2011	14:22:37	729		0.0	8.35		242.7			
06/11/2011	14:23:07	730		0.0	8.36		242.7			
06/11/2011	14:23:35	731		0.0	8.36		242.7		Bump Top Plug	
06/11/2011	14:23:36	731		0.0	8.36		242.7		End Displacement	
06/11/2011	14:23:37	732		0.0	8.36		242.7			
06/11/2011	14:23:47	731		0.0	8.36		242.7		Floats Held	
06/11/2011	14:24:07	732		0.0	8.36		242.7			
06/11/2011	14:24:37	733		0.0	8.36		242.7			
06/11/2011	14:25:00	734		0.0	8.36		242.7		End Job	
06/11/2011	14:25:07	734		0.0	8.36		242.7			
06/11/2011	14:25:37	735		0.0	8.36		242.7			
06/11/2011	14:26:07	736		0.0	8.36		242.7			
06/11/2011	14:26:37	737		0.0	8.36		242.7			

Well			Field		Job Start	Customer		Job Number
DAYBREAK FEDERAL 19-8BB 19-8BB			PARACHUTE		Jun/11/2011	Encana		BRTW-00047
Date	Time 24-hr clock	Treating Pressure PSI	Flow Rate B/M	Density LB/G	Volume BBL	Message		
06/11/2011	14:27:37	613	0.0	8.36	242.7			
06/11/2011	14:28:07	-11	0.0	8.36	242.7			
06/11/2011	14:28:37	-10	0.0	8.36	242.7			
06/11/2011	14:29:07	-10	0.0	8.36	242.7			
06/11/2011	14:29:37	-10	0.0	8.36	242.7			
06/11/2011	14:30:07	-10	0.0	8.36	242.7			

Post Job Summary

Average Pump Rates, bbl/min					Volume of Fluid Injected, bbl			
Slurry 3.9	N2	Mud	Maximum Rate 6.1		Total Slurry 242.7	Mud 0.0	Spacer 42.5	N2
Treating Pressure Summary, psi					Breakdown Fluid			
Maximum 3195	Final -11	Average 327	Bump Plug to	Breakdown	Type FreshWater	Volume bbl		Density 8.34 lb/gal
Avg. N2 Percent %		Designed Slurry Volume 125.0 bbl		Displacement 105.9 bbl	Mix Water Temp 67 degF	Cement Circulated to Surface? <input checked="" type="checkbox"/>		Volume bbl
						Washed Thru Perfs <input type="checkbox"/>		To ft
Customer or Authorized Representative				Schlumberger Supervisor		Circulation Lost <input type="checkbox"/>		Job Completed <input type="checkbox"/>
Norman McCreary				Michael Franklin		-		-