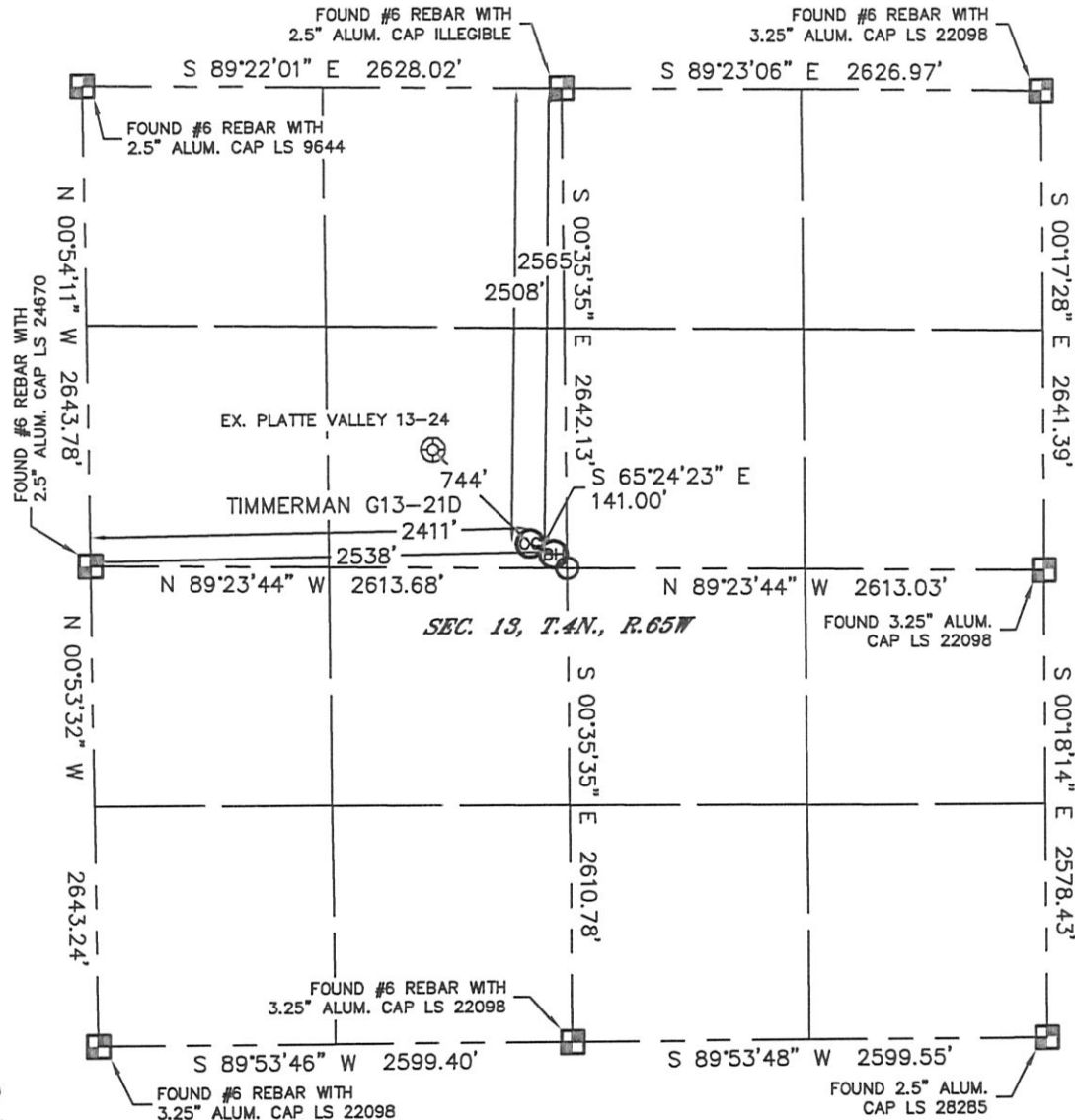


WELL LOCATION CERTIFICATE

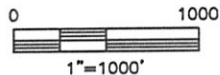
THIS MAP DOES NOT REPRESENT A BOUNDARY SURVEY

SECTION: 13
TOWNSHIP: 4N
RANGE: 65W



In accordance with a request from Nate McCorkell with Noble Energy Inc., Lat40°, Inc. has determined the surface location of the TIMMERMAN G13-21D line and 2411' from the WEST line and the bottom hole to be 2508' from the NORTH line and 2538' from the WEST line as measured at right angles from the section lines of Section 13, Township 4 North, Range 65 West of the Sixth Principal Meridian, County of Weld, State of Colorado.

I hereby state that this Well Location Certificate was prepared by me, or under my direct supervision, that the fieldwork was completed on 8/26/11, for and on behalf of Noble Energy Inc. That this is not a Land Survey Plat or an Improvement Survey Plat, and that it is not to be relied upon for establishment of fence, building, or other future Improvement lines.



NOTE:

- 1) Bearings shown are Grid Bearings of the Colorado State Plane Coordinate System, North Zone, North American Datum 1983/2007. The lineal dimensions as contained herein are based upon the "U.S. Survey Foot."
- 2) Ground elevations are based on an observed GPS elevation (NAVD 1988 DATUM).
- 3) NEAREST EXISTING WELL: PLATTE VALLEY 13-24, 744'
- 4) IMPROVEMENTS: See LOCATION DRAWING for all visible improvements within 400' of disturbed area.
- 5) SURFACE USE: GRASSLAND/PASTURE
- 6) INSTRUMENT OPERATOR: KYLE RUTZ

SURFACE LOCATION
LATITUDE: 40.31271°N
LONGITUDE: 104.61219°W
PDOP: 1.0
ELEV: 4775'
1/4, 1/4: SE1/4NW1/4
NEAREST PROPERTY LINE: 134' SOUTH

BOTTOM HOLE
LATITUDE: 40.31254°N
LONGITUDE: 104.61173°W

NOTE

According to Colorado law, you must commence any legal action based upon any defect in this W.L.C. within three years after you discover such defect. In no event, may any action based upon any defect in this survey be commenced more than ten years after the date of the certificate shown hereon. (13-80-105 C.R.S.)

LEGEND

- = ALIQUOT MONUMENT AS DESCRIBED
- = CALCULATED POSITION

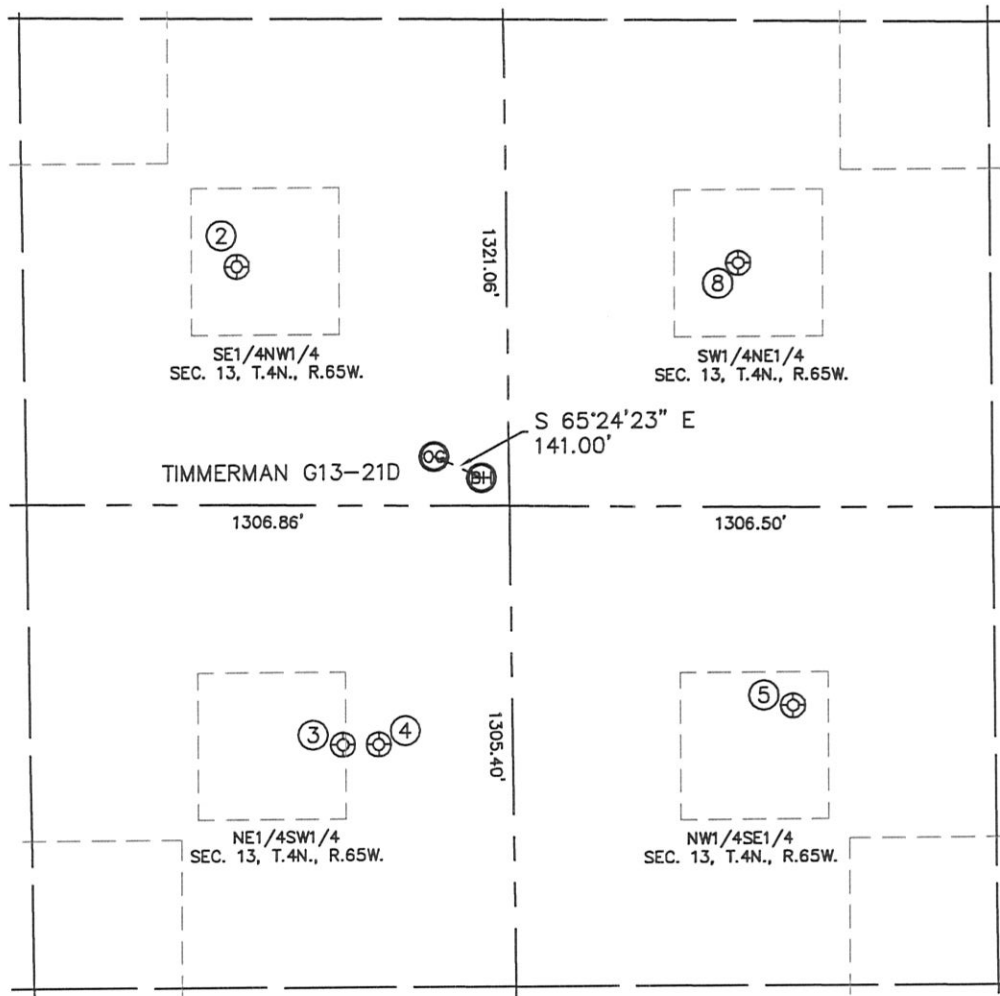


Brian T. Brinkman—On behalf of Lat40°, Inc.
Colorado Licensed Professional
Land Surveyor No. 38175
PROJECT#: 2011219

SITE SKETCH

TIMMERMAN G13-21D

SECTION: 13
TOWNSHIP: 4N
RANGE: 65W



②

PLATTE VALLEY 13-24
SE1/4NW1/4
1995' FNL
1886' FWL
LAT-40.31414°N
LONG-104.61408°W
PDOP: 1.5
ELEV: 4758'

③

TIMMERMAN 14-13
NE1/4SW1/4
1967' FSL
2149' FWL
LAT-40.31057°N
LONG-104.61311°W
PDOP: 2.1
ELEV: 4792'

④

TIMMERMAN 23-13
NE1/4SW1/4
1967' FSL
2246' FWL
LAT-40.31057°N
LONG-104.61276°W
PDOP: 2.9
ELEV: 4793'

⑤

HUNTSMAN G13-10
NW1/4SE1/4
2062' FSL
1850' FEL
LAT-40.31080°N
LONG-104.60874°W
PDOP: 1.6
ELEV: 4793'

⑧

FRY 13-1
SW1/4NE1/4
1980' FNL
1989' FEL
LAT-40.31411°N
LONG-104.60921°W
PDOP: 2.0
ELEV: 4770'

