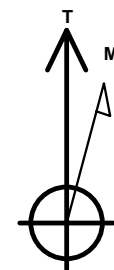
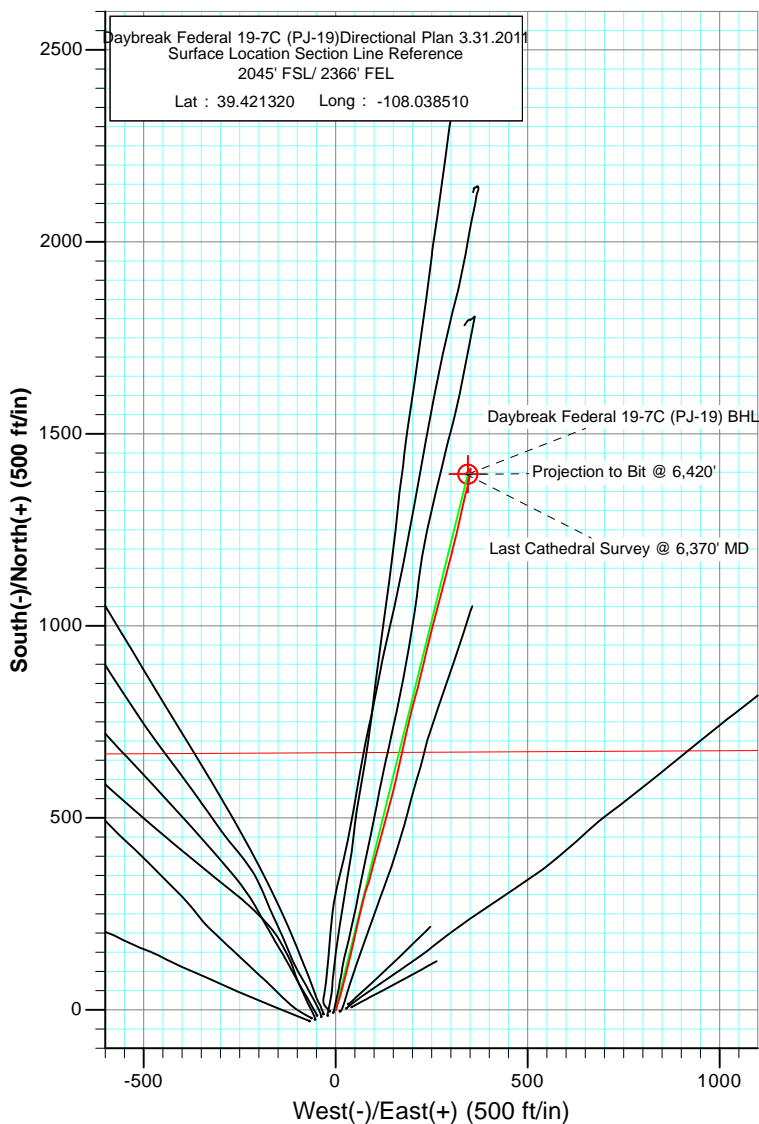
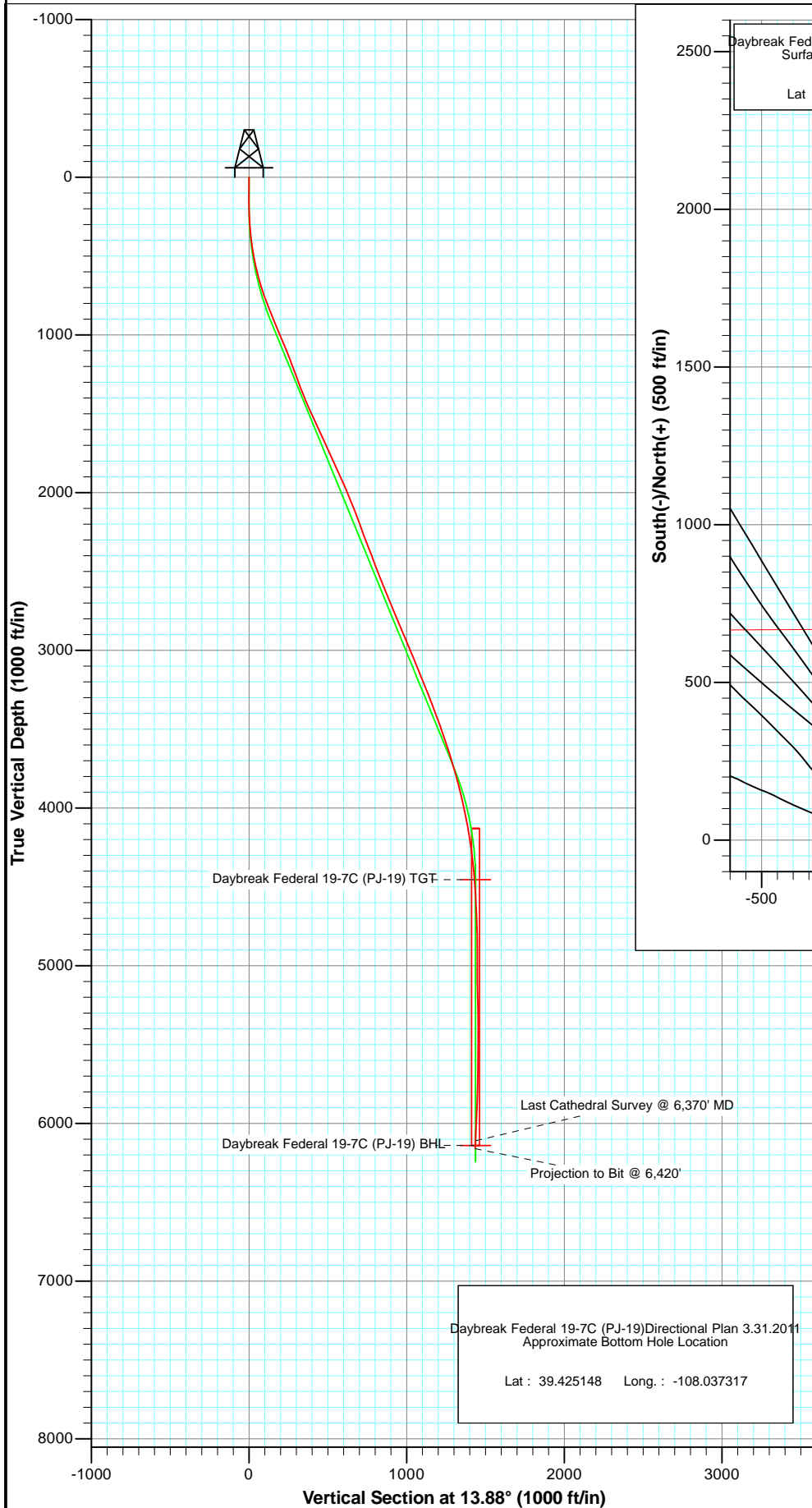




Project: S. Piceance (Parachute)
 Site: NWSE S19-T7S-R95W (PJ-19 Pad)
 Well: Daybreak Federal 19-7C (PJ-19) Directional Plan 3.31.2011
 Wellbore: DD
 Plan: FINAL



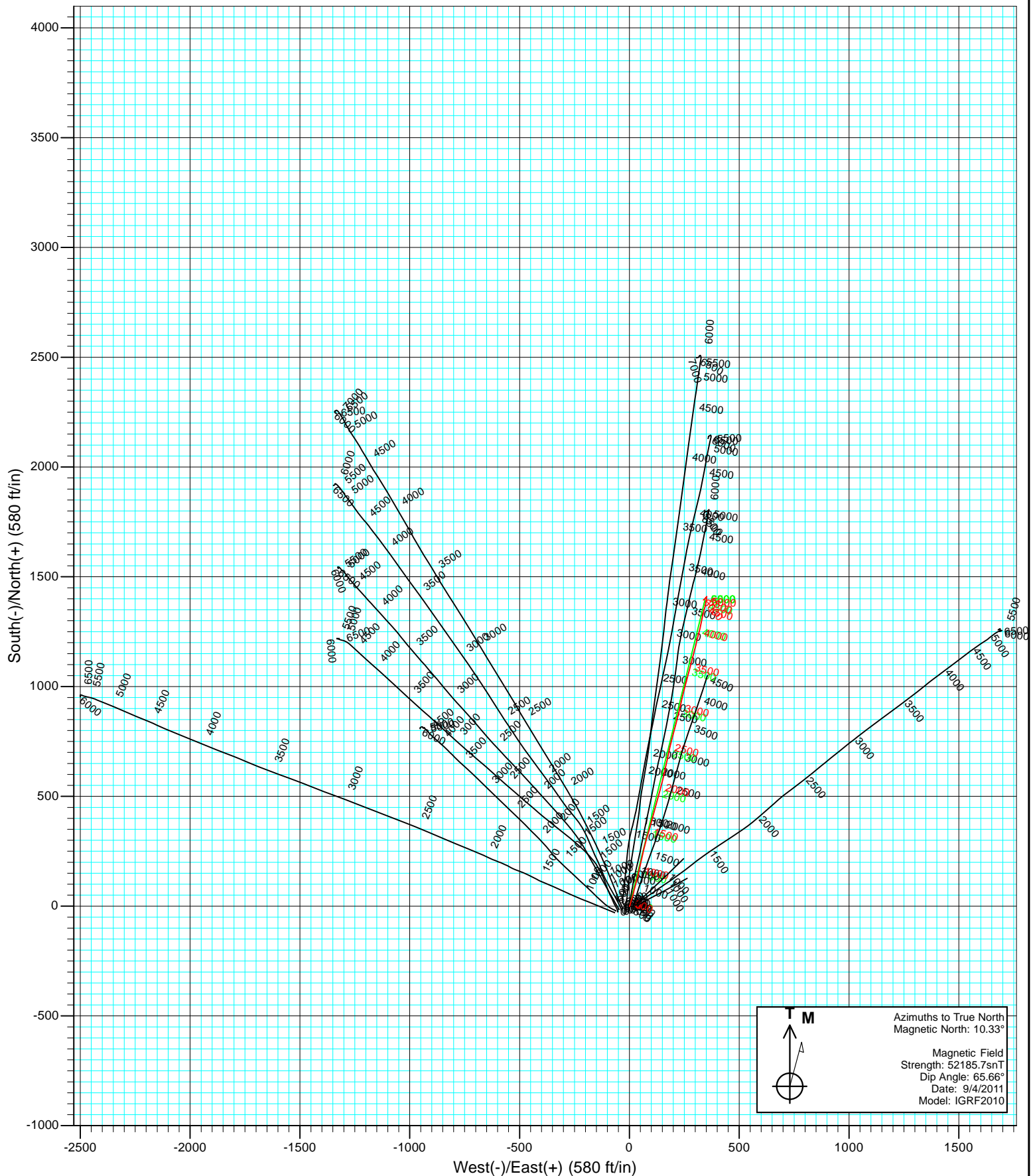
Azimuths to True North
 Magnetic North: 10.33°

Magnetic Field
 Strength: 52185.7snT
 Dip Angle: 65.66°
 Date: 9/4/2011
 Model: IGRF2010

DESIGN DETAILS: DD				
Job#	115259 (SH), 115362, 107355; BH			
KBE @	5449.0ft (Nabors M15)			
Azimuth	Origin Type	N/S	E/W	
Daybreak Federal 19-7C (PJ-19) BHL	13.88	Slot	0.0	0.0

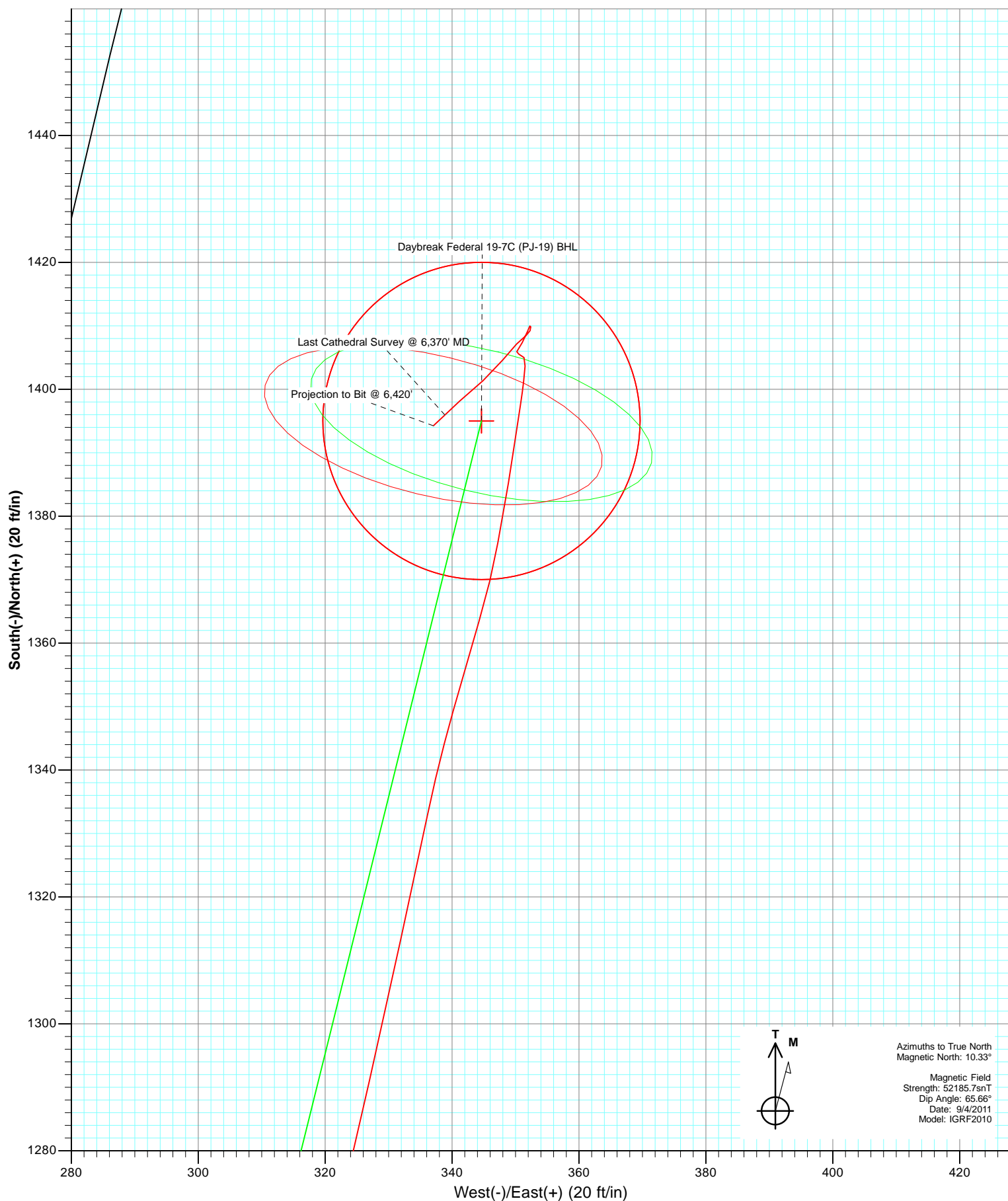


Project: S. Piceance (Parachute)
Site: NWSE S19-T7S-R95W (PJ-19 Pad)
Well: Daybreak Federal 19-7C (PJ-19) Directional Plan 3.31.2011
Wellbore: DD
Design: FINAL





Project: S. Piceance (Parachute)
Site: NWSE S19-T7S-R95W (PJ-19 Pad)
Well: Daybreak Federal 19-7C (PJ-19) Directional Plan 3.31.2011
Wellbore: DD
Plan: FINAL



Cathedral Energy Services

Survey Report

Company:	EnCana Oil & Gas (USA) Inc	Local Co-ordinate Reference:	Well Daybreak Federal 19-7C (PJ-19)Directional P
Project:	S. Piceance (Parachute)	TVD Reference:	KBE @ 5449.0ft (Nabors M15)
Site:	NWSE S19-T7S-R95W (PJ-19 Pad)	MD Reference:	KBE @ 5449.0ft (Nabors M15)
Well:	Daybreak Federal 19-7C (PJ-19)Directional Plan	North Reference:	True
Wellbore:	DD	Survey Calculation Method:	Minimum Curvature
Design:	DD	Database:	USA EDM 5000 Multi Users DB

Project	S. Piceance (Parachute), Garfield County, CO		
Map System:	US State Plane 1983	System Datum:	Mean Sea Level
Geo Datum:	North American Datum 1983		
Map Zone:	Colorado Central Zone		

Site	NWSE S19-T7S-R95W (PJ-19 Pad)			
Site Position:		Northing:	1,588,373.67 ft	Latitude: 39.421340
From:	Lat/Long	Easting:	2,283,011.65 ft	Longitude: -108.038360
Position Uncertainty:	0.0 ft	Slot Radius:	13.200 in	Grid Convergence: -1.60 °

Well	Daybreak Federal 19-7C (PJ-19)Directional Plan 3.31.2011			
Well Position	+N/-S	0.0 ft	Northing:	1,588,367.56 ft
	+E/-W	0.0 ft	Easting:	2,282,969.09 ft
Position Uncertainty	0.0 ft		Wellhead Elevation:	ft
			Ground Level:	5,427.0 ft

Wellbore	DD				
Magnetics	Model Name	Sample Date	Declination (°)	Dip Angle (°)	Field Strength (nT)
	IGRF2010	9/4/2011	10.33	65.66	52,186

Design	DD			
Audit Notes:				
Version:	1.0	Phase:	ACTUAL	Tie On Depth: 0.0
Vertical Section:	Depth From (TVD) (ft)	+N/-S (ft)	+E/-W (ft)	Direction (°)
	0.0	0.0	0.0	13.88

Survey Program	Date	9/15/2011		
From (ft)	To (ft)	Survey (Wellbore)	Tool Name	Description
139.0	1,065.0	Survey #1 (DD)	MWD	Geolink MWD
1,257.0	6,420.0	Survey #2 (DD)	MWD	Geolink MWD

Survey									
Measured Depth (ft)	Inclination (°)	Azimuth (°)	Vertical Depth (ft)	+N/-S (ft)	+E/-W (ft)	Vertical Section (ft)	Dogleg Rate (°/100ft)	Build Rate (°/100ft)	Formations / Comments
0.0	0.00	0.00	0.0	0.0	0.0	0.0	0.00	0.00	
139.0	0.30	128.70	139.0	-0.2	0.3	-0.2	0.22	0.22	
169.0	0.60	57.60	169.0	-0.2	0.5	-0.1	1.92	1.00	
200.0	1.40	34.00	200.0	0.2	0.8	0.4	2.85	2.58	
231.0	1.90	33.00	231.0	1.0	1.3	1.2	1.62	1.61	
262.0	2.90	20.40	262.0	2.1	1.9	2.5	3.63	3.23	
293.0	3.60	16.20	292.9	3.8	2.4	4.3	2.38	2.26	
324.0	4.50	11.90	323.8	5.9	2.9	6.4	3.06	2.90	
354.0	5.50	11.70	353.7	8.5	3.5	9.1	3.33	3.33	
385.0	6.50	13.20	384.5	11.6	4.2	12.3	3.26	3.23	
416.0	7.60	19.00	415.3	15.3	5.2	16.1	4.22	3.55	
447.0	8.70	18.90	446.0	19.4	6.7	20.5	3.55	3.55	

Cathedral Energy Services

Survey Report

Company:	EnCana Oil & Gas (USA) Inc	Local Co-ordinate Reference:	Well Daybreak Federal 19-7C (PJ-19)Directional P
Project:	S. Piceance (Parachute)	TVD Reference:	KBE @ 5449.0ft (Nabors M15)
Site:	NWSE S19-T7S-R95W (PJ-19 Pad)	MD Reference:	KBE @ 5449.0ft (Nabors M15)
Well:	Daybreak Federal 19-7C (PJ-19)Directional Plan	North Reference:	True
Wellbore:	DD1.2011	Survey Calculation Method:	Minimum Curvature
Design:	DD	Database:	USA EDM 5000 Multi Users DB

Survey									
Measured Depth (ft)	Inclination (°)	Azimuth (°)	Vertical Depth (ft)	+N/-S (ft)	+E/-W (ft)	Vertical Section (ft)	Dogleg Rate (°/100ft)	Build Rate (°/100ft)	Formations / Comments
478.0	9.70	19.50	476.6	24.1	8.3	25.4	3.24	3.23	
508.0	10.70	18.40	506.1	29.1	10.0	30.7	3.40	3.33	
539.0	11.60	14.90	536.5	34.9	11.7	36.7	3.63	2.90	
570.0	12.50	13.90	566.8	41.2	13.3	43.2	2.98	2.90	
600.0	13.60	15.40	596.1	47.7	15.1	49.9	3.84	3.67	
631.0	14.70	15.50	626.1	55.0	17.1	57.5	3.55	3.55	
662.0	15.90	14.80	656.0	62.9	19.2	65.7	3.92	3.87	
692.0	16.80	14.40	684.8	71.1	21.3	74.1	3.02	3.00	
784.0	20.50	14.00	772.0	99.6	28.5	103.5	4.02	4.02	
877.0	21.70	13.80	858.7	132.1	36.6	137.0	1.29	1.29	
969.0	23.00	12.90	943.8	166.1	44.7	172.0	1.46	1.41	
1,065.0	23.00	12.70	1,032.2	202.7	53.0	209.5	0.08	0.00	Last Cathedral svy @ 1065' MD
1,257.0	20.61	12.54	1,210.4	272.3	68.6	280.8	1.25	-1.24	
1,352.0	20.30	17.37	1,299.5	304.4	77.1	314.0	1.81	-0.33	
1,448.0	21.93	17.63	1,389.0	337.3	87.5	348.5	1.70	1.70	
1,543.0	23.47	13.77	1,476.7	372.6	97.4	385.1	2.25	1.62	
1,638.0	24.92	15.35	1,563.3	410.3	107.2	424.0	1.67	1.53	
1,734.0	25.53	15.97	1,650.2	449.7	118.2	464.9	0.69	0.64	
1,829.0	25.62	14.47	1,735.9	489.3	129.0	505.9	0.69	0.09	
1,925.0	23.86	15.26	1,823.0	528.1	139.3	546.1	1.87	-1.83	
2,020.0	23.77	14.38	1,909.9	565.2	149.1	584.4	0.39	-0.09	
2,115.0	22.98	12.45	1,997.2	601.8	157.9	622.1	1.16	-0.83	
2,211.0	21.31	12.10	2,086.1	637.2	165.6	658.3	1.74	-1.74	
2,307.0	20.43	13.15	2,175.8	670.6	173.0	692.5	1.00	-0.92	
2,402.0	20.87	11.75	2,264.7	703.3	180.2	726.0	0.70	0.46	
2,496.0	21.36	14.03	2,352.4	736.3	187.8	759.8	1.02	0.52	
2,592.0	20.26	13.59	2,442.1	769.4	195.9	793.9	1.16	-1.15	
2,687.0	21.40	15.26	2,530.9	802.1	204.4	827.7	1.35	1.20	
2,782.0	23.03	14.30	2,618.8	836.8	213.5	863.6	1.76	1.72	
2,878.0	21.97	13.86	2,707.5	872.5	222.5	900.4	1.12	-1.10	
2,973.0	23.25	13.06	2,795.2	908.0	231.0	936.9	1.39	1.35	
3,068.0	22.06	13.15	2,882.9	943.6	239.3	973.5	1.25	-1.25	
3,164.0	22.41	13.94	2,971.7	978.9	247.8	1,009.8	0.48	0.36	
3,259.0	22.98	14.56	3,059.4	1,014.5	256.8	1,046.4	0.65	0.60	
3,355.0	21.93	15.17	3,148.1	1,049.9	266.2	1,083.1	1.12	-1.09	
3,450.0	22.46	14.56	3,236.1	1,084.6	275.4	1,119.0	0.61	0.56	
3,545.0	21.45	14.30	3,324.2	1,119.0	284.3	1,154.5	1.07	-1.06	
3,640.0	20.65	15.09	3,412.8	1,152.0	292.9	1,188.6	0.89	-0.84	
3,735.0	19.20	14.03	3,502.2	1,183.3	301.1	1,221.0	1.57	-1.53	
3,831.0	18.02	13.86	3,593.1	1,213.1	308.4	1,251.6	1.23	-1.23	
3,926.0	16.96	13.68	3,683.7	1,240.8	315.2	1,280.2	1.12	-1.12	
4,022.0	15.69	13.06	3,775.9	1,267.0	321.5	1,307.2	1.34	-1.32	
4,116.0	14.55	12.71	3,866.6	1,290.9	326.9	1,331.7	1.22	-1.21	
4,212.0	12.83	12.27	3,959.9	1,313.1	331.9	1,354.4	1.79	-1.79	
4,308.0	11.38	12.01	4,053.7	1,332.8	336.1	1,374.5	1.51	-1.51	
4,402.0	9.40	16.05	4,146.2	1,349.3	340.2	1,391.5	2.24	-2.11	
4,498.0	8.35	16.14	4,241.0	1,363.5	344.3	1,406.3	1.09	-1.09	
4,592.0	7.12	10.34	4,334.2	1,375.8	347.2	1,418.9	1.55	-1.31	
4,688.0	4.31	9.46	4,429.7	1,385.2	348.9	1,428.4	2.93	-2.93	
4,783.0	3.82	8.23	4,524.5	1,391.8	349.9	1,435.1	0.52	-0.52	
4,879.0	2.90	9.02	4,620.3	1,397.4	350.7	1,440.7	0.96	-0.96	
4,974.0	1.89	6.38	4,715.2	1,401.3	351.3	1,444.7	1.07	-1.06	
5,068.0	0.97	3.40	4,809.2	1,403.7	351.5	1,447.0	0.98	-0.98	

Cathedral Energy Services

Survey Report

Company:	EnCana Oil & Gas (USA) Inc	Local Co-ordinate Reference:	Well Daybreak Federal 19-7C (PJ-19)Directional P
Project:	S. Piceance (Parachute)	TVD Reference:	KBE @ 5449.0ft (Nabors M15)
Site:	NWSE S19-T7S-R95W (PJ-19 Pad)	MD Reference:	KBE @ 5449.0ft (Nabors M15)
Well:	Daybreak Federal 19-7C (PJ-19)Directional Plan	North Reference:	True
Wellbore:	DD1.2011	Survey Calculation Method:	Minimum Curvature
Design:	DD	Database:	USA EDM 5000 Multi Users DB

Survey									
Measured Depth (ft)	Inclination (°)	Azimuth (°)	Vertical Depth (ft)	+N/-S (ft)	+E/-W (ft)	Vertical Section (ft)	Dogleg Rate (°/100ft)	Build Rate (°/100ft)	Formations / Comments
5,163.0	0.70	336.77	4,904.2	1,405.0	351.3	1,448.3	0.49	-0.28	
5,259.0	0.70	273.05	5,000.2	1,405.6	350.5	1,448.6	0.77	0.00	
5,354.0	0.53	37.59	5,095.2	1,405.9	350.2	1,448.9	1.15	-0.18	
5,450.0	1.45	28.71	5,191.1	1,407.4	351.1	1,450.5	0.97	0.96	
5,546.0	0.88	20.27	5,287.1	1,409.1	351.9	1,452.4	0.62	-0.59	
5,641.0	0.26	28.36	5,382.1	1,410.0	352.3	1,453.3	0.66	-0.65	
5,736.0	0.40	170.74	5,477.1	1,409.9	352.4	1,453.2	0.66	0.15	
5,832.0	0.40	211.17	5,573.1	1,409.2	352.3	1,452.6	0.29	0.00	
5,927.0	0.79	224.18	5,668.1	1,408.5	351.7	1,451.7	0.43	0.41	
6,022.0	1.63	229.89	5,763.1	1,407.1	350.2	1,450.1	0.89	0.88	
6,117.0	2.46	215.04	5,858.0	1,404.6	348.0	1,447.1	1.03	0.87	
6,213.0	2.94	230.77	5,953.9	1,401.4	344.9	1,443.2	0.92	0.50	
6,308.0	2.99	227.08	6,048.8	1,398.1	341.2	1,439.2	0.21	0.05	
6,370.0	2.86	226.81	6,110.7	1,396.0	338.9	1,436.5	0.21	-0.21	Last Cathedral Survey @ 6,370' MD
6,420.0	2.86	226.81	6,160.7	1,394.3	337.0	1,434.4	0.00	0.00	Projection to Bit @ 6,420'

Targets									
Target Name	Dip Angle (°)	Dip Dir. (°)	TVD (ft)	+N/-S (ft)	+E/-W (ft)	Northing (ft)	Easting (ft)	Latitude	Longitude
- hit/miss target									
- Shape									
Daybreak Federal 19-7C	0.00	0.00	4,454.0	1,395.0	344.6	1,589,752.41	2,283,352.56	39.425150	-108.037290
- actual wellpath misses target center by 9.2ft at 4712.9ft MD (4454.5 TVD, 1387.0 N, 349.2 E)									
- Point									
Interp @ 950.0 (Daybreak)	0.00	0.00	950.0	84.2	38.3	1,588,450.66	2,283,009.69	39.421551	-108.038375
- actual wellpath misses target center by 78.3ft at 943.8ft MD (920.6 TVD, 156.6 N, 42.5 E)									
- Point									
Daybreak Federal 19-7C	0.00	0.00	6,140.0	1,395.0	344.6	1,589,752.41	2,283,352.56	39.425150	-108.037290
- actual wellpath misses target center by 6.8ft at 6399.1ft MD (6139.7 TVD, 1395.0 N, 337.8 E)									
- Circle (radius 25.0)									
Interp @ 850 (Daybreak)	0.00	0.00	850.0	20.4	5.1	1,588,387.83	2,282,974.76	39.421376	-108.038492
- actual wellpath misses target center by 104.9ft at 827.1ft MD (812.3 TVD, 114.4 N, 32.2 E)									
- Point									

Design Annotations					
Measured Depth (ft)	Vertical Depth (ft)	Local Coordinates			
		+N/-S (ft)	+E/-W (ft)	Comment	
1,065.0	1,032.2	202.7	53.0	Last Cathedral svy @ 1065' MD	
6,370.0	6,110.7	1,396.0	338.9	Last Cathedral Survey @ 6,370' MD	
6,420.0	6,160.7	1,394.3	337.0	Projection to Bit @ 6,420'	

Checked By: _____ Approved By: _____ Date: _____