



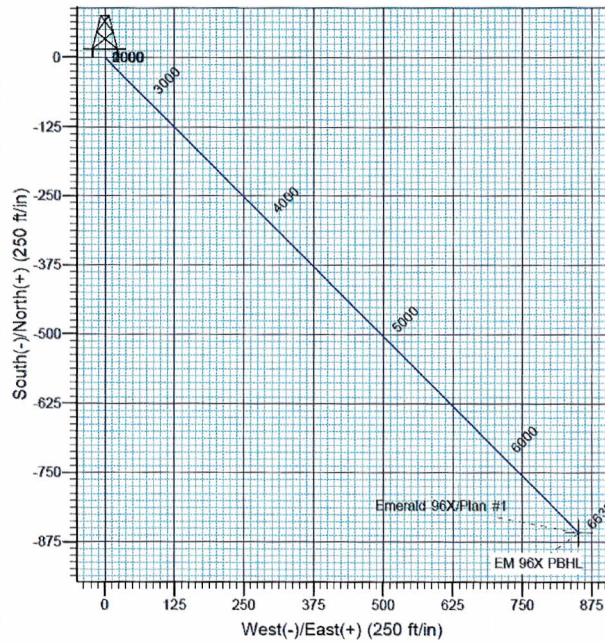
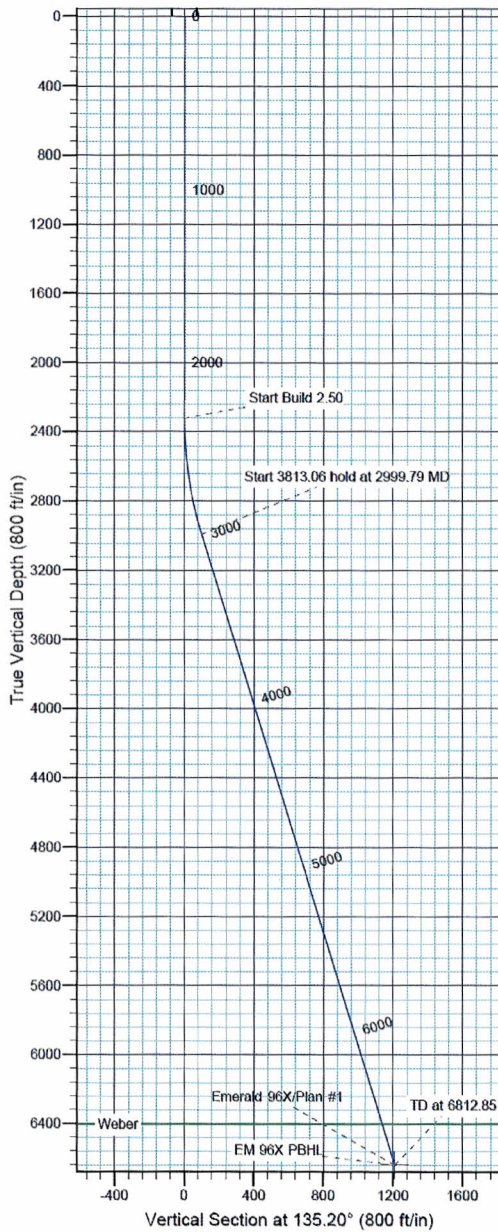
Company: Chevron
Project: Rio Blanco County, CO (NAD 83)
Site: Emerald 96X & 96X Pad



Well Details: Emerald 96X

TVD Reference: GL 5452' @ 5452.00ft (Ground Level) Ground Level: 5452.00
+N/-S +E/-W Northing Easting Latitude Longitude Slot
0.00 0.00 1298559.46 2045968.96 40° 6' 9.209 N 108° 54' 40.882 W

T M Azimuths to True North
Magnetic North: 10.75°
Magnetic Field
Strength: 52447.0snT
Dip Angle: 66.06°
Date: 12/20/2011
Model: IGRF200510



FORMATION TOP DETAILS

TVDPath MDPath Formation
6405.00 6569.31 Weber

Plan: Plan #1

18:25, December 20 2011

Created By: Rex Hall

PROJECT DETAILS: Rio Blanco County, CO (NAD 83)

Geodetic System: US State Plane: 1983
Datum: North American Datum 1983
Ellipsoid: GRS 1980
Zone: Colorado Northern Zone
System Datum: Mean Sea Level

SECTION DETAILS

Sec	MD	Inc	Azi	TVD	+N/-S	+E/-W	Dleg	TFace	VFace	Target
1	0.00	0.00	0.00	0.00	0.00	0.00	0.00	0.00	0.00	
2	2323.00	0.00	0.00	2323.00	0.00	0.00	0.00	0.00	0.00	
3	2999.79	16.92	135.20	2999.79	-70.40	69.90	2.50	135.20	99.21	
4	6812.85	16.92	135.20	6812.85	-857.85	851.82	0.00	0.00	1208.92	EM 96X PBHL