

SYNERGY RESOURCES CORPORATION  
20203 HIGHWAY 60  
PLATTEVILLE, Colorado

SRC Pratt  
SRC Pratt 29 PD

**Ensign/33**

## **Post Job Summary**

# **Cement Production Casing**

Date Prepared: 2/7/11  
Version: 1

Service Supervisor: SALINAS, JOSE

Submitted by: FRY, DOMINIK

**HALLIBURTON**

# HALLIBURTON

## ***Pumping Schedule***

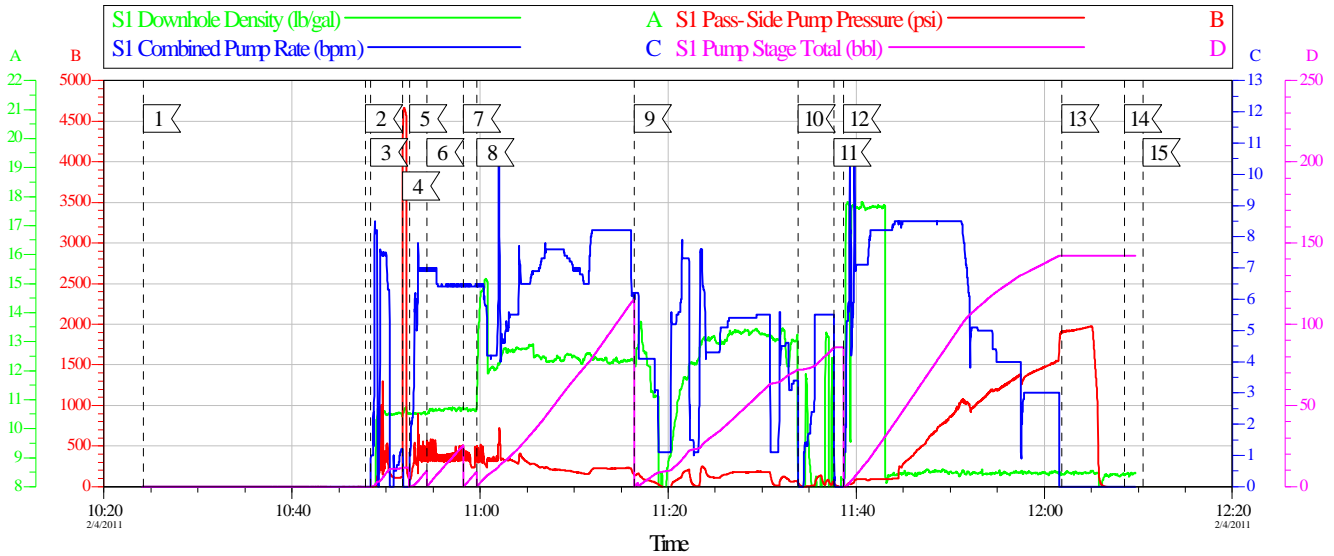
---

Stage /Plug #	Fluid #	Fluid Type	Fluid Name	Surface Density lbm/gal	Avg Rate bbl/min	Surface Volume	Downhole Volume
1	1	Spacer	Water Spacer	8.33	5.00	20.0 bbl	20.0 bbl
1	2	Spacer	MUD FLUSH III	8.40	5.00	24.0 bbl	24.0 bbl
1	3	Spacer	WATER SPACER	8.33	5.00	10.0 bbl	10.0 bbl
1	4	Cement Slurry	EcconoCem B2 12.5#	12.50	6.00	420.0 sacks	420.0 sacks
1	5	Cement Slurry	13.5# Fraccem	13.50	5.00	240.0 sacks	240.0 sacks
1	6	Spacer	ClaFix III Water Displacement	8.33	7.00	10.0 Gal	10.0 Gal

# HALLIBURTON

## Data Acquisition

SYENERGY  
SRC PRATT 29PD 45 PRODUCTION  
SO# 7950939



### Global Event Log

Intersection	SPPP	Intersection	SPPP	Intersection	SPPP
1 Starting Job	10:24:12 0.304	2 Start Job	10:47:49 -0.696	3 Pump Spacer 1	10:48:22 -0.696
4 Test Lines	10:51:46 366.8	5 Pump Spacer 1	10:52:32 88.30	6 Pump Spacer 2	10:54:21 458.9
7 Pump Spacer 3	10:58:14 385.1	8 Pump Cement	10:59:39 452.1	9 Pump Tail Cement	11:16:25 142.3
10 Clean Lines	11:33:50 45.29	11 Drop Plug	11:37:36 47.24	12 Pump Displacement	11:38:40 -1.696
13 Bump Plug	12:01:53 1908	14 End Job	12:08:31 -2.696	15 Ending Job	12:10:31 -2.696

Customer:	Job Date: 04-Feb-2011	Sales Order #: 7950939
Well Description:	Job Type:	ADC Used:
Company Rep:	Cement Supervisor:	Elite #:

HALLIBURTON  
OptiCemv6.49  
04-Feb-11 12:14

# HALLIBURTON

## Service Supervisor Reports

### Job Log

Date/Time	Chart #	Activity Code	Pump Rate	Cum Vol	Pump	Pressure (psig)	Comments
02/04/2011 02:00		Call Out					
02/04/2011 04:30		Pre-Convoy Safety Meeting					
02/04/2011 05:45		Arrive at Location from Service Center					
02/04/2011 09:30		Pre-Rig Up Safety Meeting					
02/04/2011 09:35		Rig-Up Equipment					
02/04/2011 10:00		Pre-Job Safety Meeting					
02/04/2011 10:48		Pump Spacer	5	20		88.0	PUMP WATER SPACER @ 8.3 PPG
02/04/2011 10:51		Test Lines	2	2		3000.0	TEST LINES WITH FRESH WATER
02/04/2011 10:54		Pump Spacer 1	5	24		450.0	PUMP MUDDLUSH SPACER @ 8.3 PPG
02/04/2011 10:58		Pump Spacer 2	5	10		398.0	PUMP WATER SPACER @ 8.3 PPG
02/04/2011 10:59		Pump Lead Cement	5	141		142.0	PUMP 420 SKS OF ECONOCHEM B2 @ 12.5 PPG (141 BBL)
02/04/2011 11:16		Pump Tail Cement	5	73		163.0	PUMP 240 SKS OF FRACCHEM @ 13.5 PPG (72.6 BBL)
02/04/2011 11:30		Clean Lines	4	10		100.0	WASH LINES WITH FRESH WATER
02/04/2011 11:36		Drop Top Plug	0	0		.0	PLUG LEFT CMT HEAD
02/04/2011 11:38		Pump Displacement	5			249.0	PUMP 127.5 BBL OF FRESH WATER FOR DISPLACEMENT
02/04/2011 11:57		Other	3	126		1350.0	SLOW RATE DOWN TO BUMP PLUG
02/04/2011 12:02		Bump Plug	3	136		1900.0	BUMP PLUG WITH 500 PSI OVER
02/04/2011 12:04		Release Casing Pressure	0	0		.0	RELEASE PSI
02/04/2011 12:05		Check Floats	0	0		.0	CHECK FLOATS HELD GOOD
02/04/2011 12:10		End Job					
02/04/2011 12:15		Pre-Rig Down Safety Meeting					
02/04/2011 12:20		Rig-Down Equipment					
02/04/2011 13:20		Depart Location Safety Meeting					
02/04/2011 13:30		Depart Location for Service Center or Other Site					

# HALLIBURTON

## The Road to Excellence Starts with Safety

<b>Sold To #:</b> 359915		<b>Ship To #:</b> 2835368		<b>Quote #:</b>		<b>Sales Order #:</b> 7950939	
<b>Customer:</b> SYNERGY RESOURCES CORPORATION				<b>Customer Rep:</b> Libhart, Don			
<b>Well Name:</b> SRC Pratt			<b>Well #:</b> 29 PD			<b>API/UWI #:</b>	
<b>Field:</b> WATTENBERG		<b>City (SAP):</b> GREELEY		<b>County/Parish:</b> Weld		<b>State:</b> Colorado	
<b>Contractor:</b> Ensign			<b>Rig/Platform Name/Num:</b> 33				
<b>Job Purpose:</b> Cement Production Casing							
<b>Well Type:</b> Development Well			<b>Job Type:</b> Cement Production Casing				
<b>Sales Person:</b> FLING, MATTHEW			<b>Srvc Supervisor:</b> SALINAS, JOSE			<b>MBU ID Emp #:</b> 100319	

### Job Personnel

HES Emp Name	Exp Hrs	Emp #	HES Emp Name	Exp Hrs	Emp #	HES Emp Name	Exp Hrs	Emp #
IOERGER, TODD A		485941	OZBUN, RYAN Jacob		475709	SALINAS, JOSE R		100319
STOEBER, KEITH A		486734	THOMPSON, STEVEN Darrin		445340			

### Equipment

HES Unit #	Distance-1 way	HES Unit #	Distance-1 way	HES Unit #	Distance-1 way	HES Unit #	Distance-1 way
10246780C	20 mile	10948695	20 mile	11019824C	20 mile	11341988C	20 mile
11360865C	20 mile						

### Job Hours

Date	On Location Hours	Operating Hours	Date	On Location Hours	Operating Hours	Date	On Location Hours	Operating Hours
<b>TOTAL</b>			Total is the sum of each column separately					

### Job

Formation Name	Top	Bottom	Called Out	Date	Time	Time Zone
Formation Depth (MD)			On Location	04 - Feb - 2011	02:00	MST
Form Type	BHST		Job Started	04 - Feb - 2011	06:00	MST
Job depth MD	8709. ft	Job Depth TVD	Job Completed	04 - Feb - 2011	10:00	MST
Water Depth		Wk Ht Above Floor	Departed Loc	04 - Feb - 2011	12:00	MST
Perforation Depth (MD)	From	To		04 - Feb - 2011	13:30	MST

### Well Data

Description	New / Used	Max pressure psig	Size in	ID in	Weight lbm/ft	Thread	Grade	Top MD ft	Bottom MD ft	Top TVD ft	Bottom TVD ft
Open Hole				7.875				900.	8709.	.	.
Production Casing	New		4.5	4.	11.6			.	8709.		
Surface Casing	New		8.625	8.097	24.		J-55	.	900.	.	.

### Sales/Rental/3<sup>rd</sup> Party (HES)

Description	Qty	Qty uom	Depth	Supplier
SHOE,FLT,4-1/2 8RD,2-3/4 SSII	1	EA		
CLR,FLT,4-1/2 8RD,9.5-13.5PPF,2-3/4	1	EA		
CENTRALIZER ASSY - API - 4-1/2 CSG X	30	EA		
CLAMP - LIMIT - 4-1/2 - HINGED -	1	EA		
KIT,HALL WELD-A	1	EA		
PLUG ASSY - 3W LATCHDOWN - 4-1/2 IN	1	EA		
Description	Qty	Qty uom	Depth	Supplier
BAFFLE ASSY - 4-1/2 8RD LATCHDOWN PLUG	1	EA		

### Tools and Accessories

# HALLIBURTON

Type	Size	Qty	Make	Depth	Type	Size	Qty	Make	Depth	Type	Size	Qty	Make
Guide Shoe					Packer					Top Plug			
Float Shoe					Bridge Plug					Bottom Plug			
Float Collar					Retainer					SSR plug set			
Insert Float										Plug Container			
Stage Tool										Centralizers			
<b>Miscellaneous Materials</b>													
Gelling Agt			Conc		Surfactant		Conc			Acid Type		Qty	Conc %
Treatment Fld			Conc		Inhibitor		Conc			Sand Type		Size	Qty
<b>Fluid Data</b>													
<b>Stage/Plug #: 1</b>													
Fluid #	Stage Type	Fluid Name			Qty	Qty uom	Mixing Density lbm/gal	Yield ft3/sk	Mix Fluid Gal/sk	Rate bbl/min	Total Mix Fluid Gal/sk		
1	Water Spacer				20.00	bbl	8.33	.0	.0	5.0			
2	MUD FLUSH III	MUD FLUSH III - SBM (528788)			24.00	bbl	8.4	.0	.0	5.0			
3	WATER SPACER				10.00	bbl	8.33	.0	.0	5.0			
4	EcconoCem B2 12.5#	ECONOCHEM (TM) SYSTEM (452992)			420.0	sacks	12.5	1.89	10.29	6.0	10.29		
	10.29 Gal	FRESH WATER											
5	13.5# Fracchem	FRACCEM (TM) SYSTEM (452963)			240.0	sacks	13.5	1.7	8.16	5.0	8.16		
	8.16 Gal	FRESH WATER											
6	ClaFix III Water Displacement				10.00	Gal	8.33	.0	.0	7.0			
<b>Calculated Values</b>				<b>Pressures</b>				<b>Volumes</b>					
Displacement			Shut In: Instant			Lost Returns		Cement Slurry		Pad			
Top Of Cement			5 Min			Cement Returns		Actual Displacement		Treatment			
Frac Gradient			15 Min			Spacers		Load and Breakdown		Total Job			
<b>Rates</b>													
Circulating			Mixing			Displacement				Avg. Job			
Cement Left In Pipe		Amount	17 ft	Reason		Shoe Joint							
Frac Ring # 1 @		ID		Frac ring # 2 @		ID		Frac Ring # 3 @		ID		Frac Ring # 4 @	ID
The Information Stated Herein Is Correct						Customer Representative Signature							