

**T2N, R103W, 6th P.M.**

**CHEVRON U.S.A., INC.**

Well location, EMERALD #95X, located as shown in the SW 1/4 NW 1/4 of Section 36, T2N, R103W, 6th P.M., Rio Blanco County, Colorado.

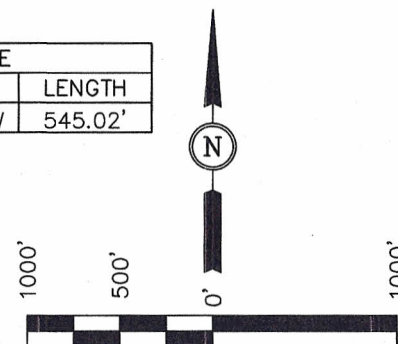
**BASIS OF ELEVATION**

GOLF TRIANGULATION STATION LOCATED IN THE SE 1/4 OF SECTION 30, T2N, R102W, 6th P.M., TAKEN FROM THE BANTY POINT QUADRANGLE, COLORADO, RIO BLANCO COUNTY, 7.5 MINUTE QUAD. (TOPOGRAPHIC MAP) PUBLISHED BY THE UNITED STATES DEPARTMENT OF THE INTERIOR, GEOLOGICAL SURVEY. SAID ELEVATION IS MARKED AS BEING 5311 FEET.

**BASIS OF BEARINGS**

BASIS OF BEARINGS IS A G.P.S. OBSERVATION.

LINE TABLE		
LINE	DIRECTION	LENGTH
L1	N61°39'19"W	545.02'



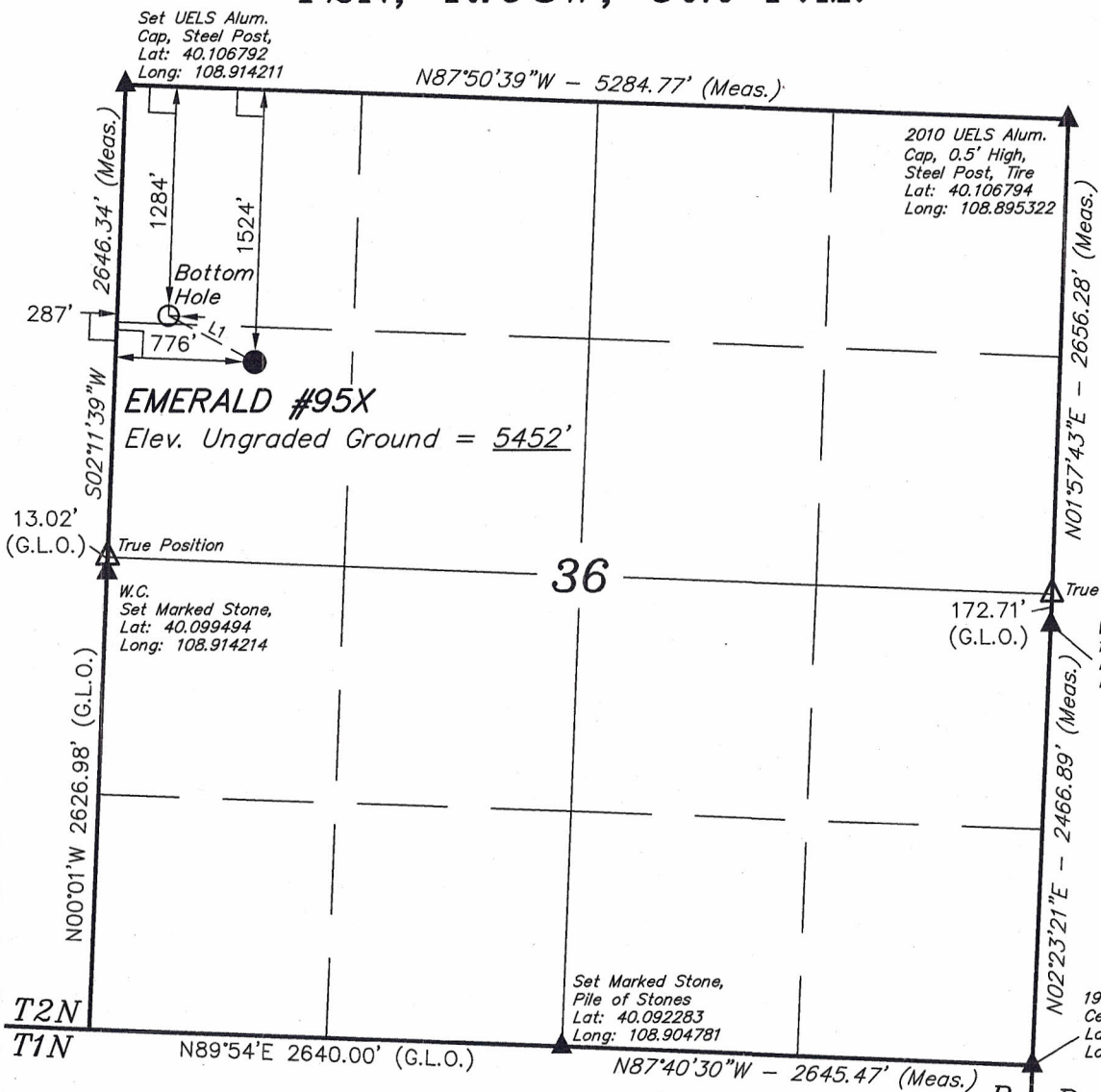
SCALE

**CERTIFICATE**

THIS IS TO CERTIFY THAT THE ABOVE PLAT WAS PREPARED FROM FIELD NOTES OF ACTUAL SURVEYS MADE BY ME OR UNDER MY SUPERVISION AND THAT THE SAME ARE TRUE AND CORRECT TO THE BEST OF MY KNOWLEDGE AND BELIEF.

REGISTERED LAND SURVEYOR  
REGISTRATION NO. 17492  
STATE OF COLORADO

**UINTAH ENGINEERING & LAND SURVEYING**  
85 SOUTH 200 EAST - VERNAL, UTAH 84078  
(435) 789-1017



**LEGEND:**

- └─ = 90° SYMBOL
- = PROPOSED WELL HEAD.
- ▲ = SECTION CORNERS LOCATED.
- △ = SECTION CORNERS RE-ESTABLISHED.  
(Not Set on Ground.)

NOTE:  
SEE ADDENDUM TO LEGAL PLAT FOR  
EXISTING IMPROVEMENTS WITHIN 400'  
OF THE PROPOSED WELL DISTURBANCE.

NAD 83 (TARGET BOTTOM HOLE)	NAD 83 (SURFACE LOCATION)
LATITUDE = 40°06'11.77" (40.103269)	LATITUDE = 40°06'09.39" (40.102608)
LONGITUDE = 108°54'47.47" (108.913186)	LONGITUDE = 108°54'41.18" (108.911439)
NAD 27 (TARGET BOTTOM HOLE)	NAD 27 (SURFACE LOCATION)
LATITUDE = 40°06'11.87" (40.103297)	LATITUDE = 40°06'09.49" (40.102636)
LONGITUDE = 108°54'45.07" (108.912519)	LONGITUDE = 108°54'38.78" (108.910772)

PDOP = 0.9

SCALE 1" = 1000'	DATE SURVEYED: 09-30-11	DATE DRAWN: 11-16-11
PARTY J.F. K.P. S.B.	REFERENCES G.L.O. PLAT	
WEATHER COLD	FILE CHEVRON U.S.A., INC.	