

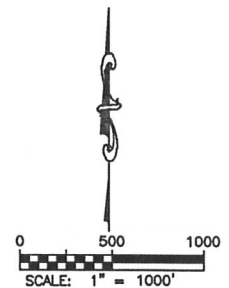
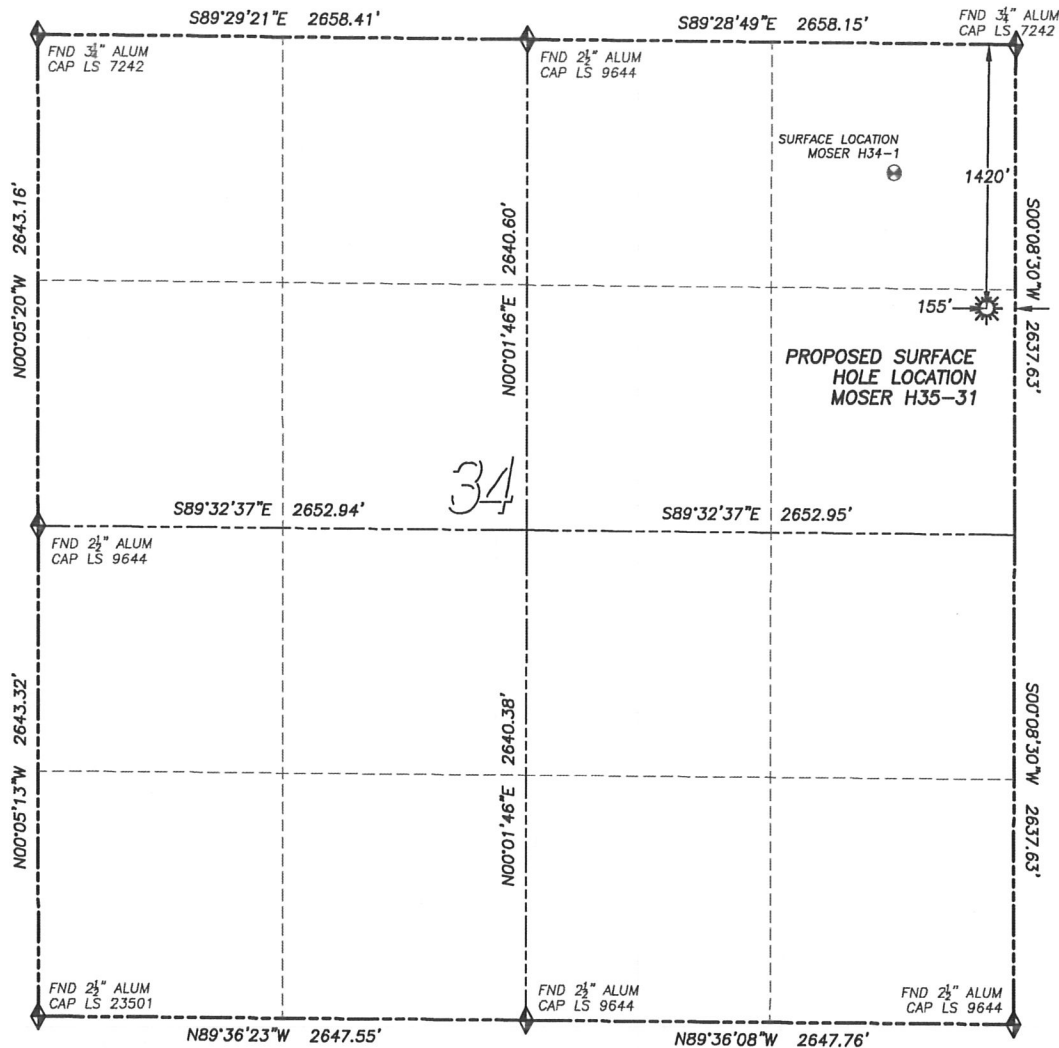
DALEY LAND SURVEYING, INC.

PARKER, CO. 80134

303 953 9841

WELL LOCATION CERTIFICATE MOSER H35-31

SECTION 34, TOWNSHIP 3 NORTH, RANGE 65 WEST OF THE 6TH PRINCIPAL MERIDIAN

**LEGEND**

- ◆ FOUND MONUMENT AS DESCRIBED
- ★ PROPOSED WELL
- EXISTING WELL
- BOTTOM HOLE
- ⊗ ABANDONED WELL

NAD 83 LATITUDE AND LONGITUDE**MOSER H35-31 SURFACE HOLE:**

LATITUDE: N40.18515°
 LONGITUDE: W104.64072°
 ELEVATION: 4829'
 FOOTAGE: 1420' FNL, 155' FEL
 PDOP: 1.4
 QTR/QTR: SE4/NE4
 PROP LINE: 155'± EAST

NEAREST EXISTING WELL:

MOSER H34-1 SURFACE HOLE
 LATITUDE: N40.18715°
 LONGITUDE: W104.64253°
 ELEVATION: 4825'
 885' NORTHWEST

IN ACCORDANCE WITH A REQUEST FROM MATT CAMPBELL OF NOBLE ENERGY INC., DALEY LAND SURVEYING, INC. HAS DETERMINED THE SURFACE LOCATION OF THE MOSER H35-31 WELL TO BE 1420' FNL, 155' FEL, AS MEASURED AT NINETY (90) DEGREES FROM THE SECTION LINES OF SECTION 34, TOWNSHIP 3 NORTH, RANGE 65 WEST OF THE 6TH PRINCIPAL MERIDIAN, WELD COUNTY, COLORADO.

I HEREBY CERTIFY THAT THIS WELL LOCATION CERTIFICATE WAS PREPARED BY ME OR UNDER MY DIRECT SUPERVISION, THAT THE WORK WAS COMPLETED ON 10/14/2011 FOR AND ON BEHALF OF NOBLE ENERGY, INC., AND THAT THIS MAP DOES NOT REPRESENT A BOUNDARY SURVEY, IT IS NOT A LAND SURVEY PLAT OR AN IMPROVEMENT SURVEY PLAT AND IT IS NOT TO BE RELIED UPON FOR THE ESTABLISHMENT OF FENCE, BUILDING OR OTHER FUTURE IMPROVEMENT LINES.

NOTES:

- 1) BEARINGS FOR THIS MAP ARE ASSUMED AND BASED UPON GPS OBSERVATIONS MADE BETWEEN MONUMENTS LOCATED AT THE NORTHEAST CORNER AND NORTH QUARTER CORNER OF SECTION 34, T.3N., R.65W.
- 2) HORIZONTAL DATUM IS NAD83.
- 3) VERTICAL DATUM IS NAVD88 AND ORIGINATES FROM THE LOCAL C.O.R.S. NETWORK, UTILIZING THE GEOID09 MODEL.
- 4) SEE LOCATION DRAWING FOR VISIBLE IMPROVEMENTS WITHIN 400' OF PROPOSED DISTURBED AREA.
- 5) SURFACE USE: AGRICULTURE.

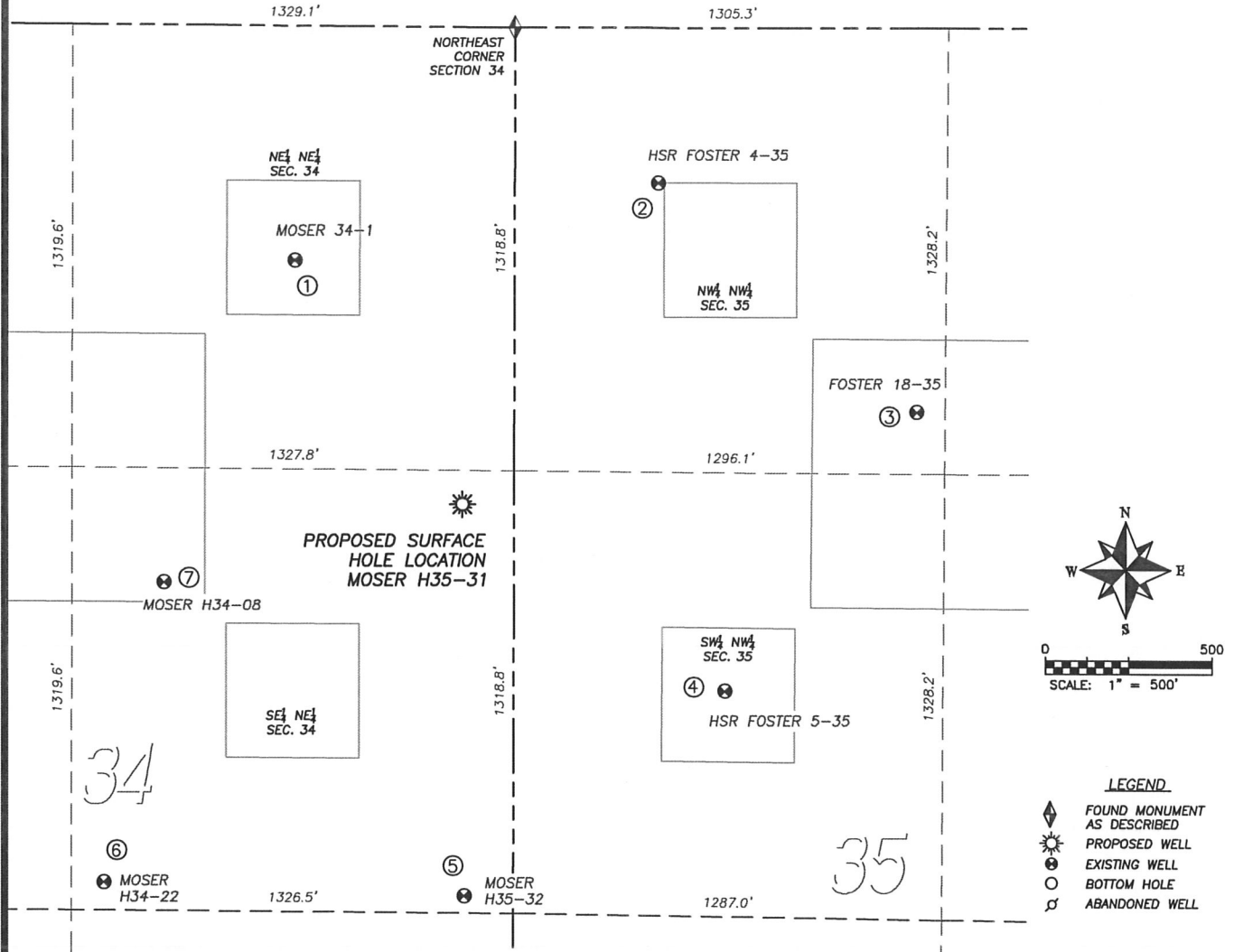
NOTICE: According to Colorado law you MUST commence any legal action based upon any defect in this W.L.C. within three years after you first discover such defect. In no event may any action based upon any such defect in this W.L.C. be commenced more than ten years from the date of the certification shown herein.



FOR AND ON BEHALF OF
 DALEY LAND SURVEYING, INC.,
 Robert Daley, PLS 35597

SITE SKETCH MOSER H35-31

SECTION 34, TOWNSHIP 3 NORTH, RANGE 65 WEST OF THE 6TH PRINCIPAL MERIDIAN



①

MOSER H34-1
NE/NE SEC. 34
698' FNL, 660' FEL
885' NW OF PROPOSED
SURFACE HOLE LOCATION
LAT. N40.18715°
LONG. W104.64253°
EL: 4825'
PDOP 1.3

②

HSR FOSTER 4-35
NW/NW SEC. 35
461' FNL, 432' FWL
1124' NE OF PROPOSED
SURFACE HOLE LOCATION
LAT. N40.18778°
LONG. W104.63862°
EL: 4827'
PDOP 1.3

③

FOSTER 18-35
NW/NW SEC. 35
1143' FNL, 1212' FWL
1395' NE OF PROPOSED
SURFACE HOLE LOCATION
LAT. N40.18591°
LONG. W104.63583°
EL: 4836'
PDOP 1.3

④

HSR FOSTER 5-35
SW/NW SEC. 35
1975' FNL, 636' FWL
966' SE OF PROPOSED
SURFACE HOLE LOCATION
LAT. N40.18362°
LONG. W104.63790°
EL: 4835'
PDOP 1.3

⑤

MOSER H35-32
SE/NE SEC. 34
2587' FNL, 148' FEL
1167' S OF PROPOSED
SURFACE HOLE LOCATION
LAT. N40.18195°
LONG. W104.64071°
EL: 4832'
PDOP 1.4

⑥

MOSER H34-22
SE/NE SEC. 34
2555' FNL, 1229' FEL
1558' SW OF PROPOSED
SURFACE HOLE LOCATION
LAT. N40.18206°
LONG. W104.64458°
EL: 4832'
PDOP 1.4

⑦

MOSER H34-08
SE/NE SEC. 34
1660' FNL, 1051' FEL
925' SW OF PROPOSED
SURFACE HOLE LOCATION
LAT. N40.18452°
LONG. W104.64393°
EL: 4828'
PDOP 1.5

NOTES:

1. THIS DOES NOT REPRESENT A BOUNDARY SURVEY
2. HORIZONTAL DATUM IS NAD83
3. VERTICAL DATUM IS NAVD88 AND ORIGINATES FROM THE LOCAL C.O.R.S. NETWORK, UTILIZING THE GEOID09 MODEL