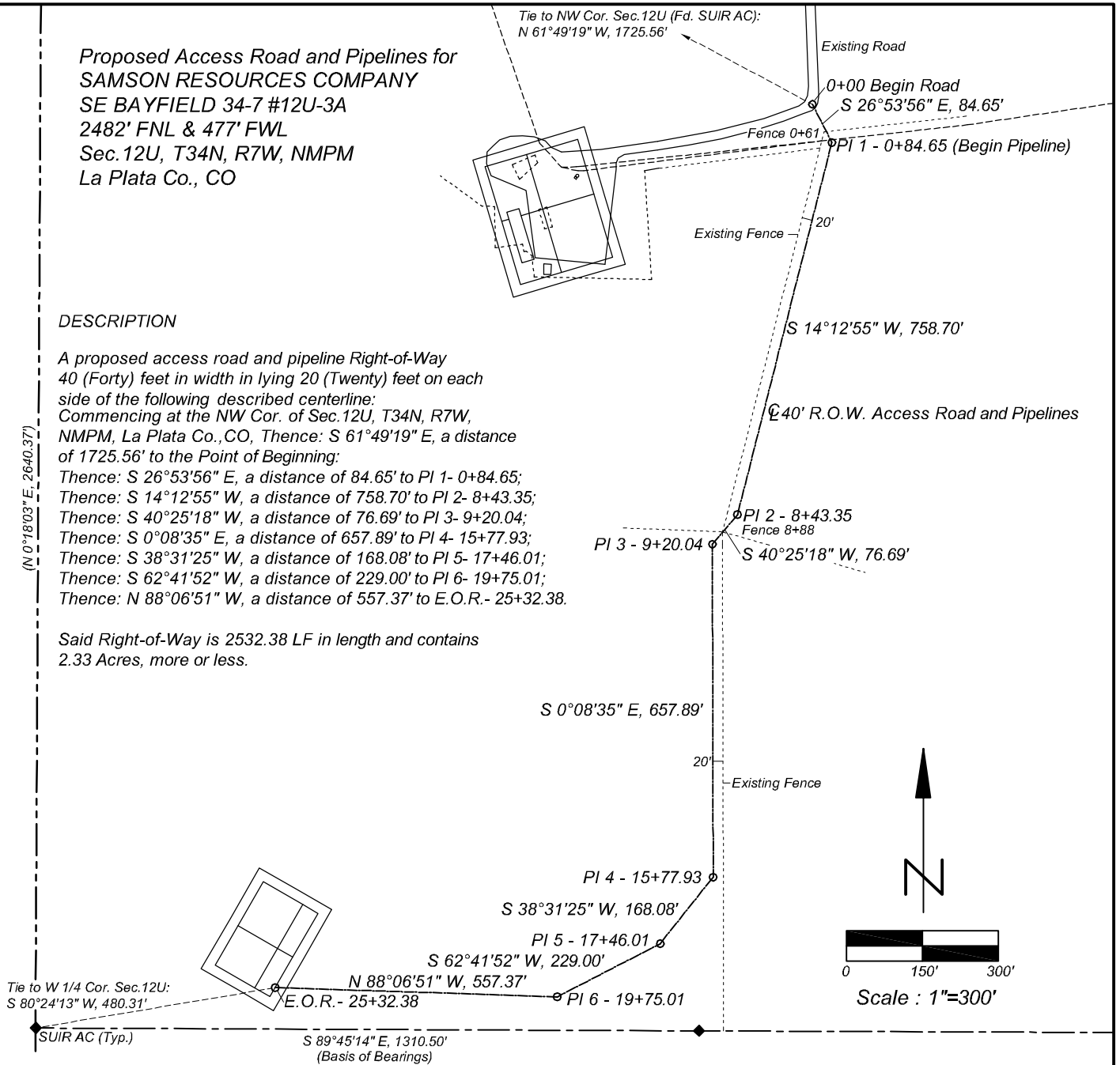


**Proposed Access Road and Pipelines for
SAMSON RESOURCES COMPANY
SE BAYFIELD 34-7 #12U-3A
2482' FNL & 477' FWL
Sec. 12U, T34N, R7W, NMPM
La Plata Co., CO**

DESCRIPTION

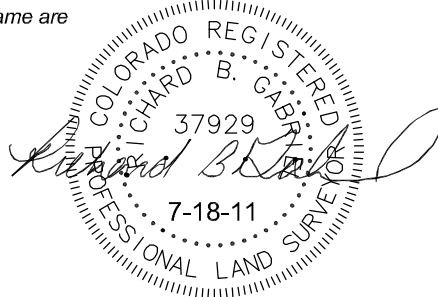
A proposed access road and pipeline Right-of-Way
40 (Forty) feet in width in lying 20 (Twenty) feet on each
side of the following described centerline:
Commencing at the NW Cor. of Sec. 12U, T34N, R7W,
NMPM, La Plata Co., CO, Thence: S 61°49'19" E, a distance
of 1725.56' to the Point of Beginning;
Thence: S 26°53'56" E, a distance of 84.65' to PI 1- 0+84.65;
Thence: S 14°12'55" W, a distance of 758.70' to PI 2- 8+43.35;
Thence: S 40°25'18" W, a distance of 76.69' to PI 3- 9+20.04;
Thence: S 0°08'35" E, a distance of 657.89' to PI 4- 15+77.93;
Thence: S 38°31'25" W, a distance of 168.08' to PI 5- 17+46.01;
Thence: S 62°41'52" W, a distance of 229.00' to PI 6- 19+75.01;
Thence: N 88°06'51" W, a distance of 557.37' to E.O.R.- 25+32.38.

Said Right-of-Way is 2532.38 LF in length and contains
2.33 Acres, more or less.



This is to certify that this plat was prepared from field notes of actual
surveys made by me, or under my supervision, and that the same are
true and correct to the best of my knowledge and belief.

Richard B. Gabriel
Colorado PLS No. 37929



ENERGY SURVEYORS, INC.

P.O. BOX 991
FARMINGTON, NM 87499

FAX: 801-659-4246
OFFICE: 505-325-4005
CELL: 505-360-8142

Field Completion Date: 13 July 2011