

Well Location Plat

SAMSON RESOURCES COMPANY
SE BAYFIELD 34-7 #12U-3A
2482' FNL & 477' FWL
Sec. 12U, T34N, R7W, NMPM
La Plata Co., CO

Ground Elev. 6789.2 (NGVD 29)
(Echols Unit #2-12U NWNW Sec. 12U=6803.6 gr.)

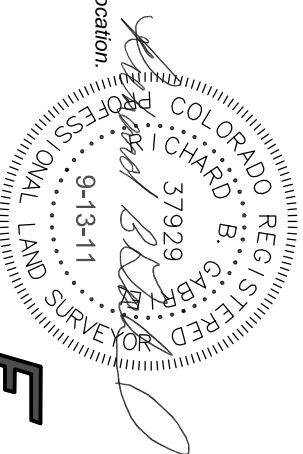
Lat. 37.20608° N
Long. 107.56675° W (NAD 83)

Field Completion Date: 02 June 2011
Plat Date: 13 Sep 2011

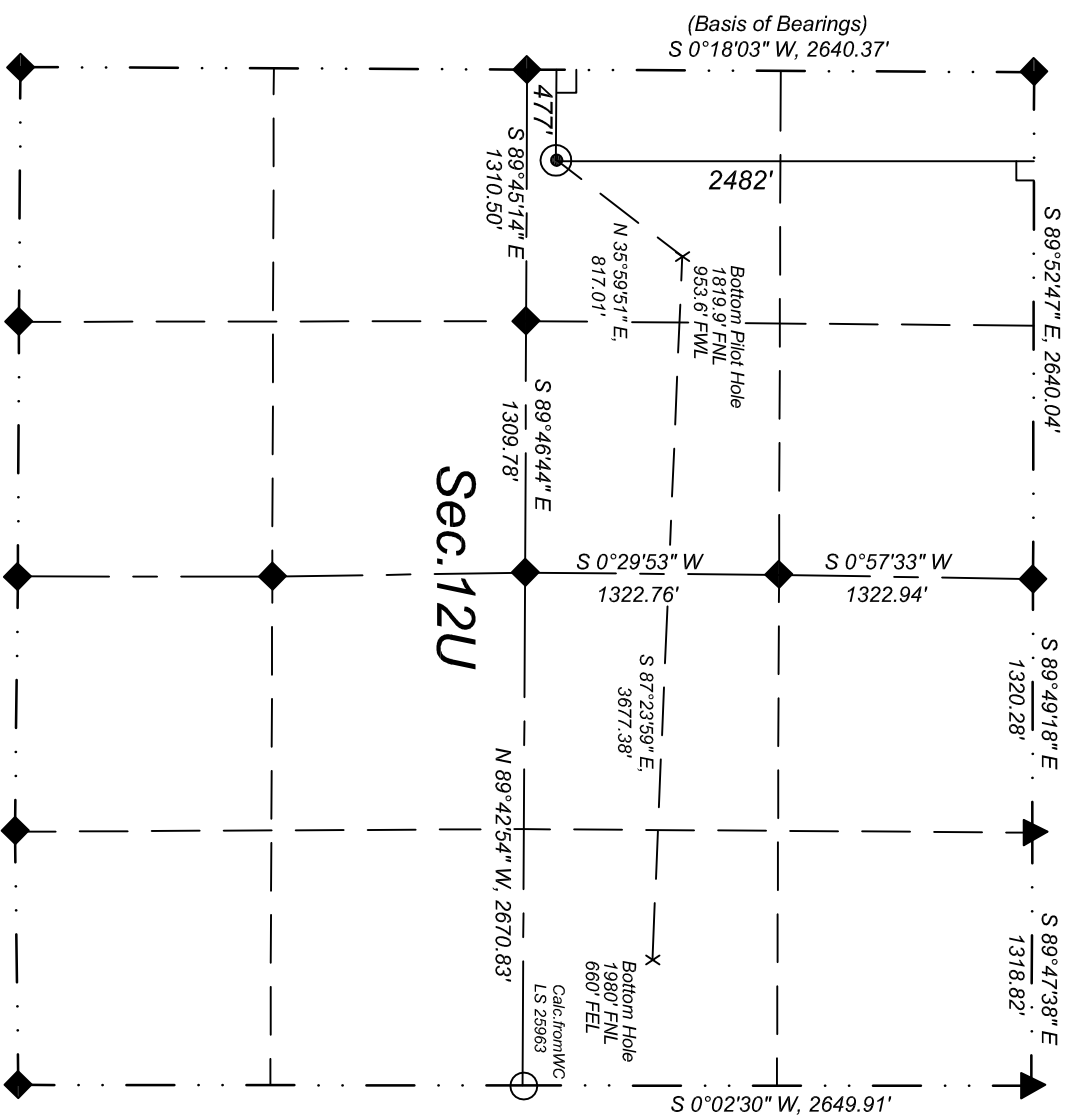
Non-crop Pasture
Improvements on Sht.2

This is to certify that this plat was prepared from field notes of actual surveys made by me, or under my supervision, and that the same are true and correct to the best of my knowledge and belief.

Richard B. Gabriel
Colorado PLS No. 37929



ENERGY SURVEYORS, INC.
P.O. BOX 991
FARMINGTON, NM 87499
FAX: 801-659-4246
OFFICE: 505-325-4005
CELL: 505-360-8142



LEGEND

- Proposed Well
- ◆ Std. So. Ute 3½" AI. Cap w/refs.
- ▲ Std. BLM 3½" AI. Cap w/refs.
- Private Survey Cor. w/refs.
- └ 90° Symbol
- () Record or Calc. Bearing and Dist.
- ★ Existing well

Note: GPS was not used in surveying this location.

