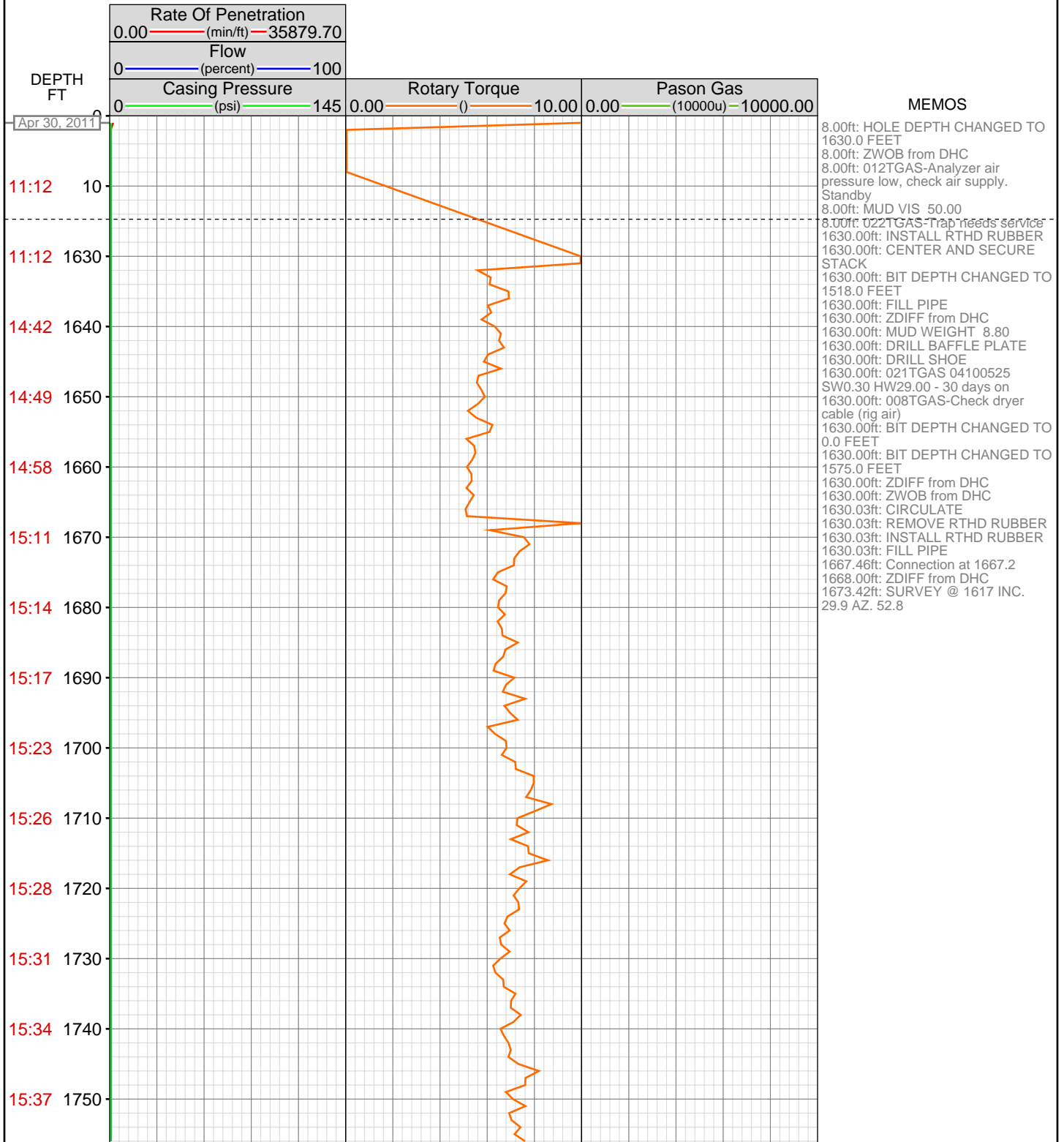


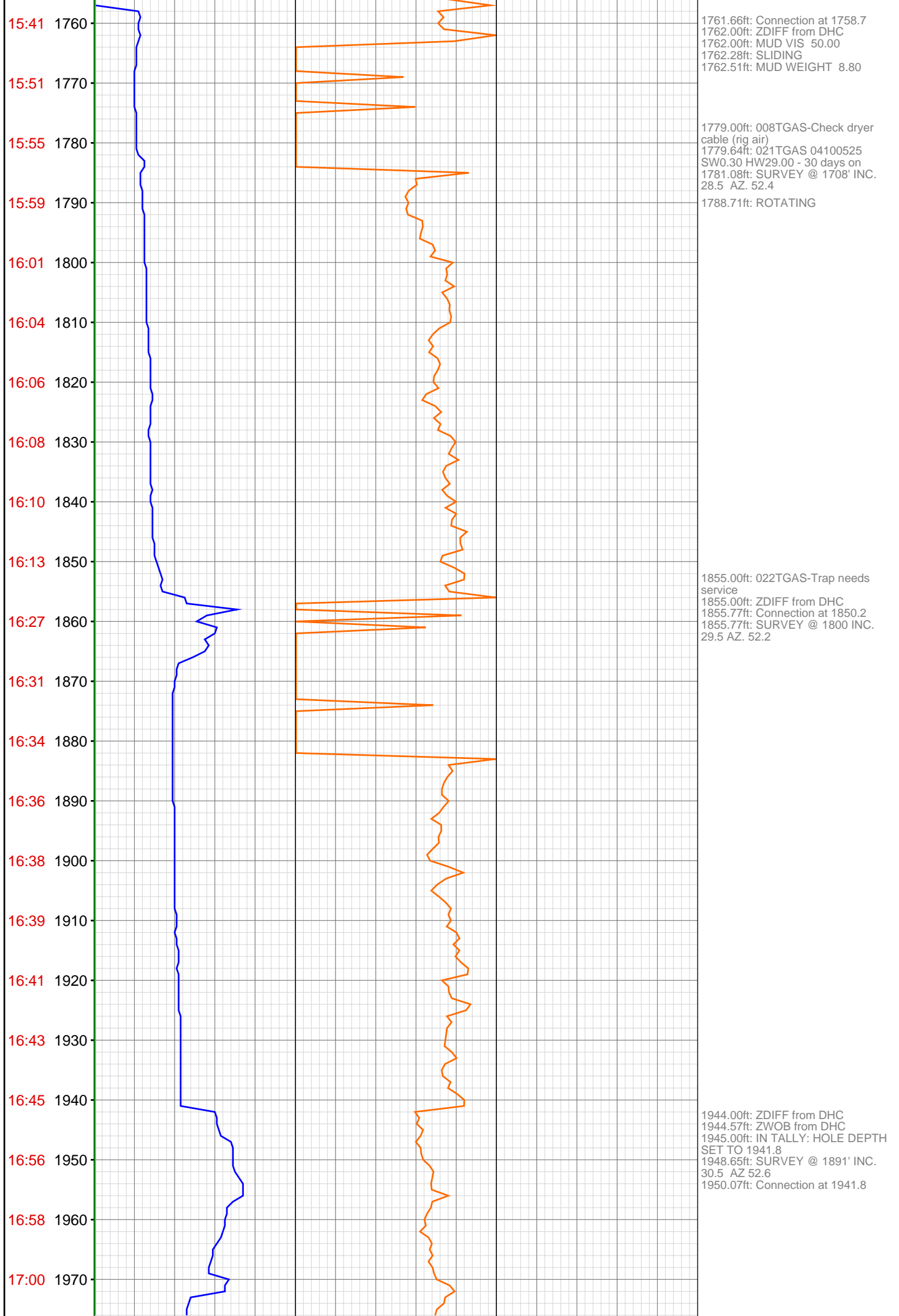
# DataHub EDR Log

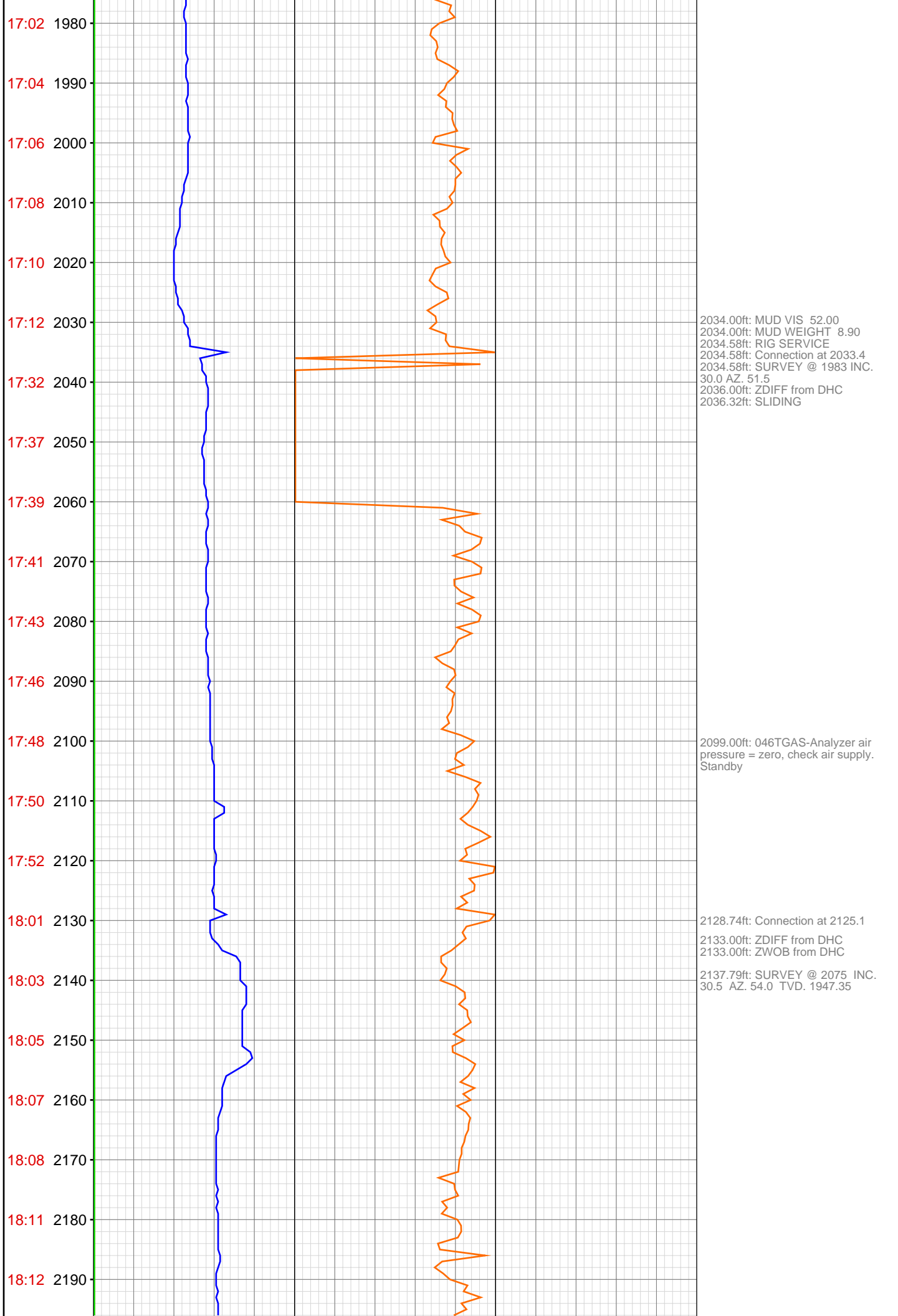
Wed May 11, 2011 08:35:47  
Well Dossier 1304131162  
Marilyn Tucker

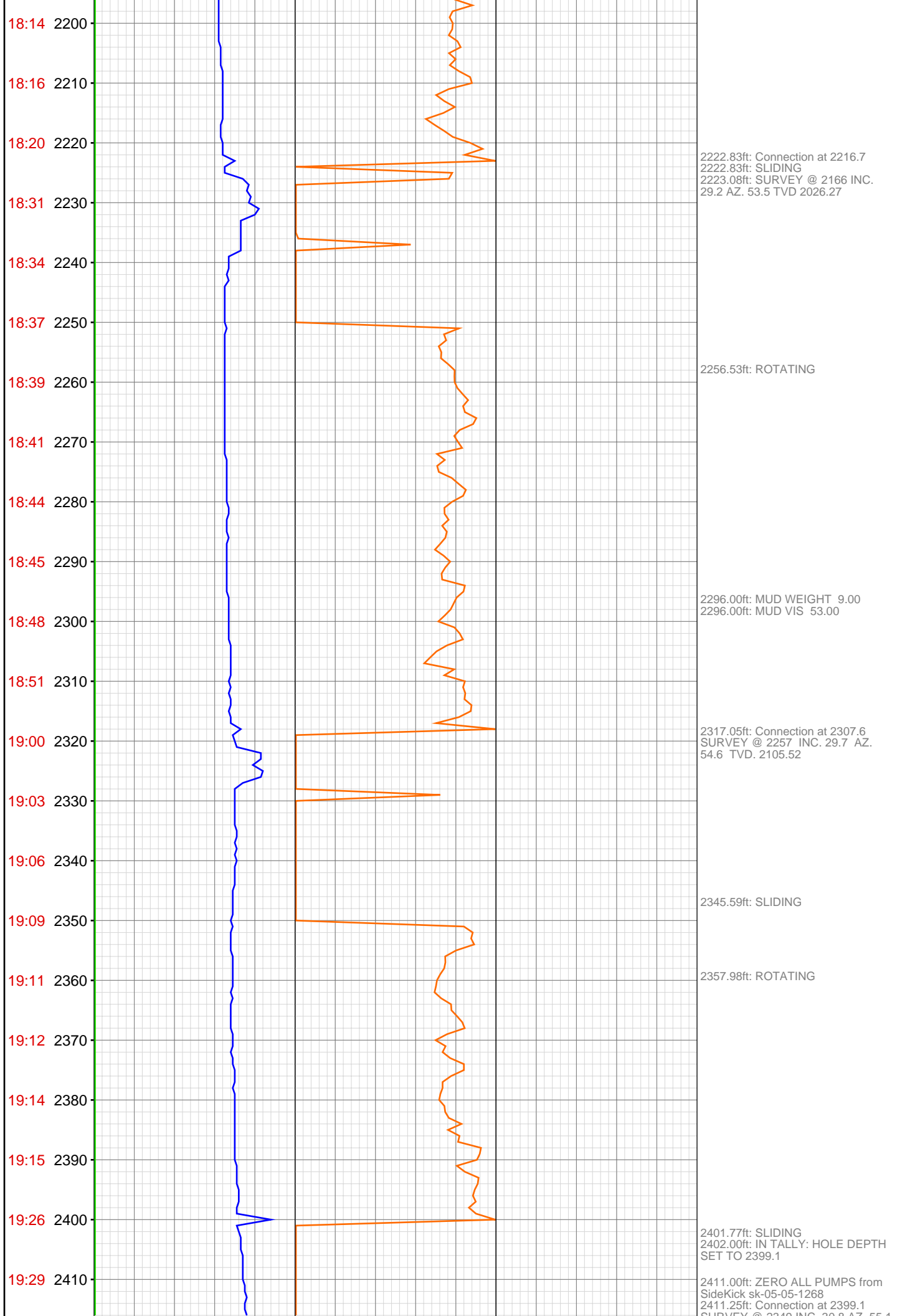
**OPERATOR:** EnCana Oil & Gas (USA), Inc.  
**WELL:** NPMF 03B-16 H17 696  
**FIELD:**  
**LOCATION:** QtrQtr: SENE, Sec 17, Twp: 6S Rng: 96W MRELEA  
**COUNTRY:** USA  
**RIG:** Pat-UTI 303

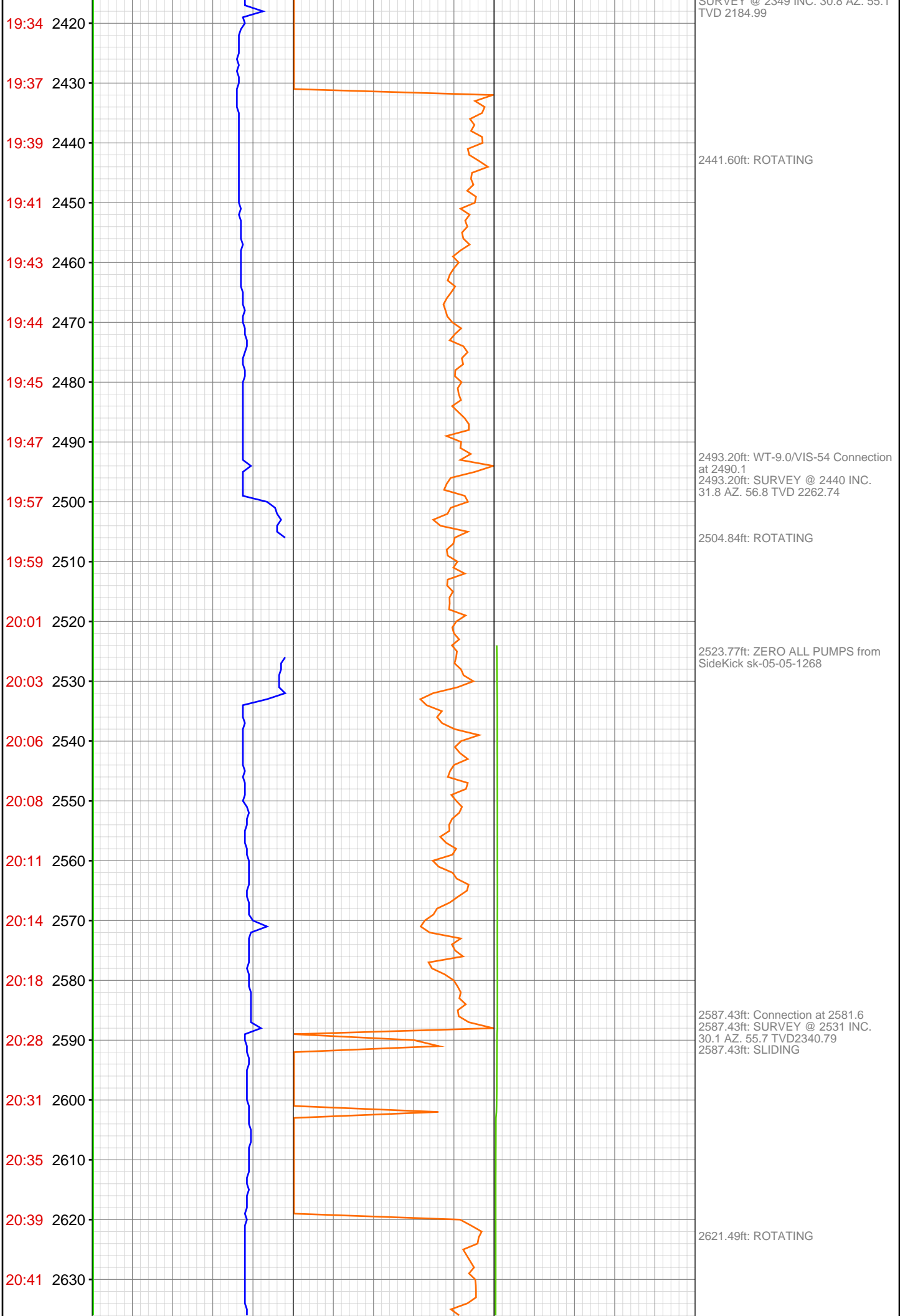
**CONTRACTOR:** Patterson-UTI Drilling Company  
**UNIQUE WELL ID:** 05-045-18693-00  
**SPUD DATE:** Apr 30, 2011 14:30  
**RELEASE DATE:** May 06, 2011 08:30

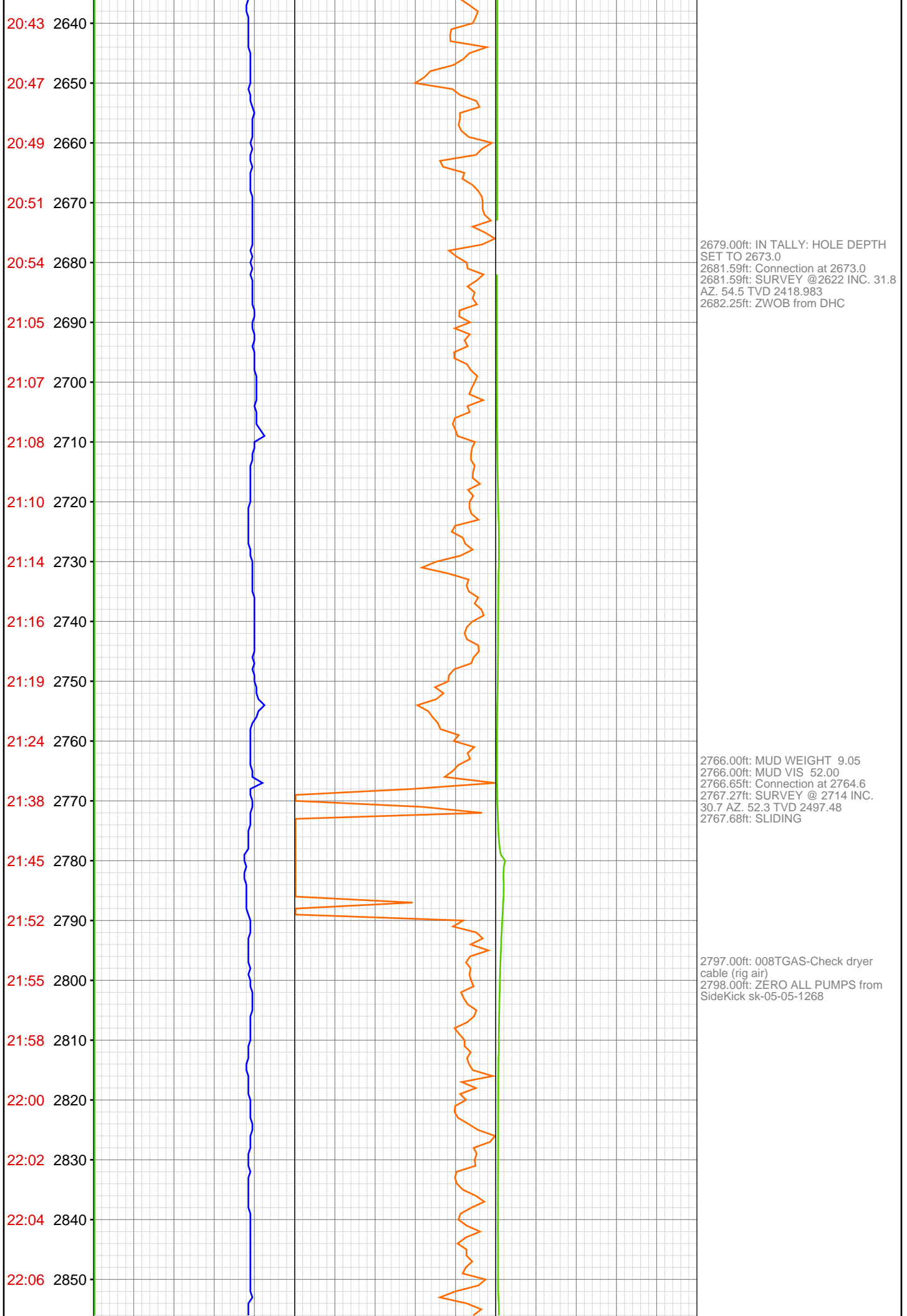




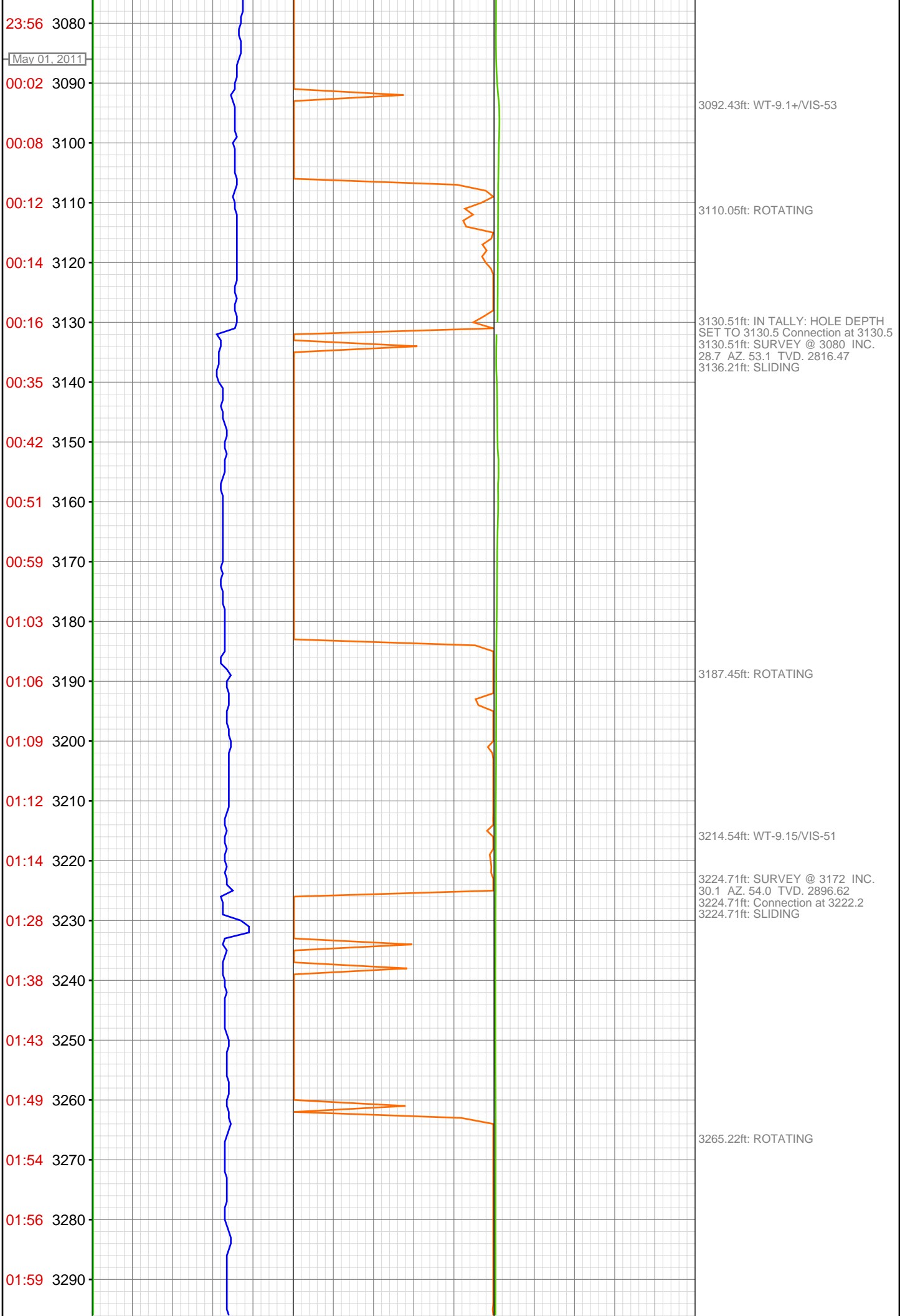






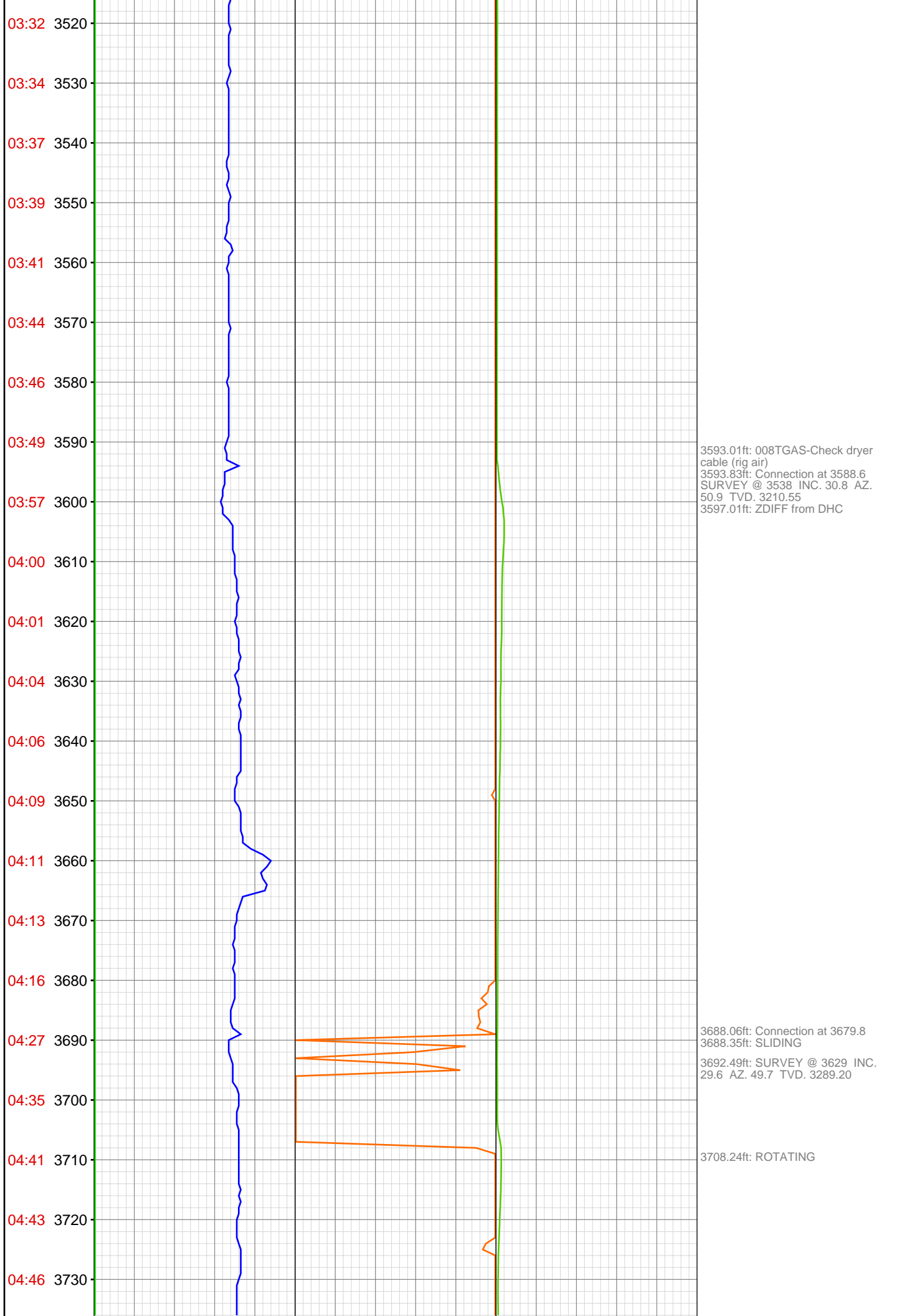


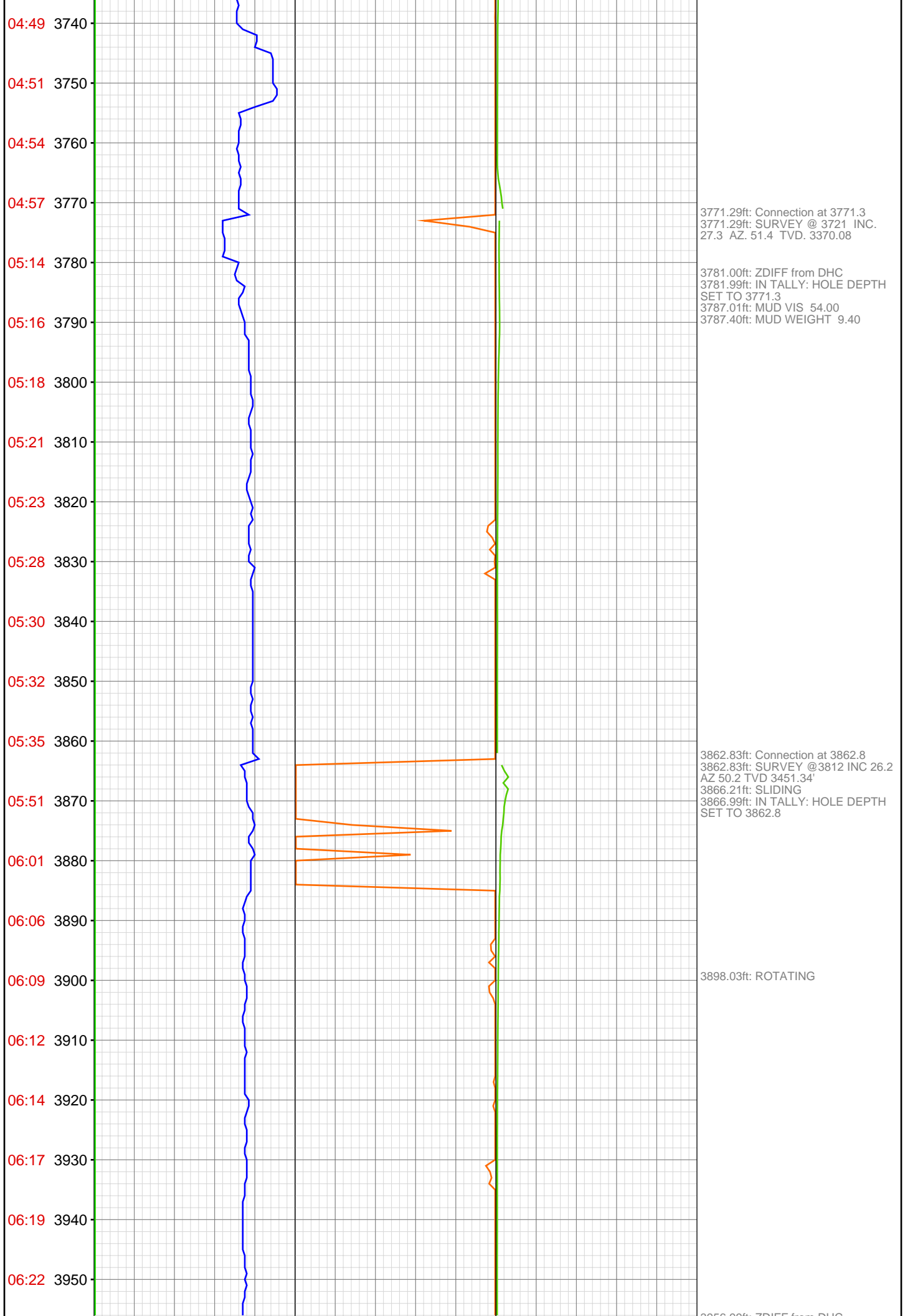


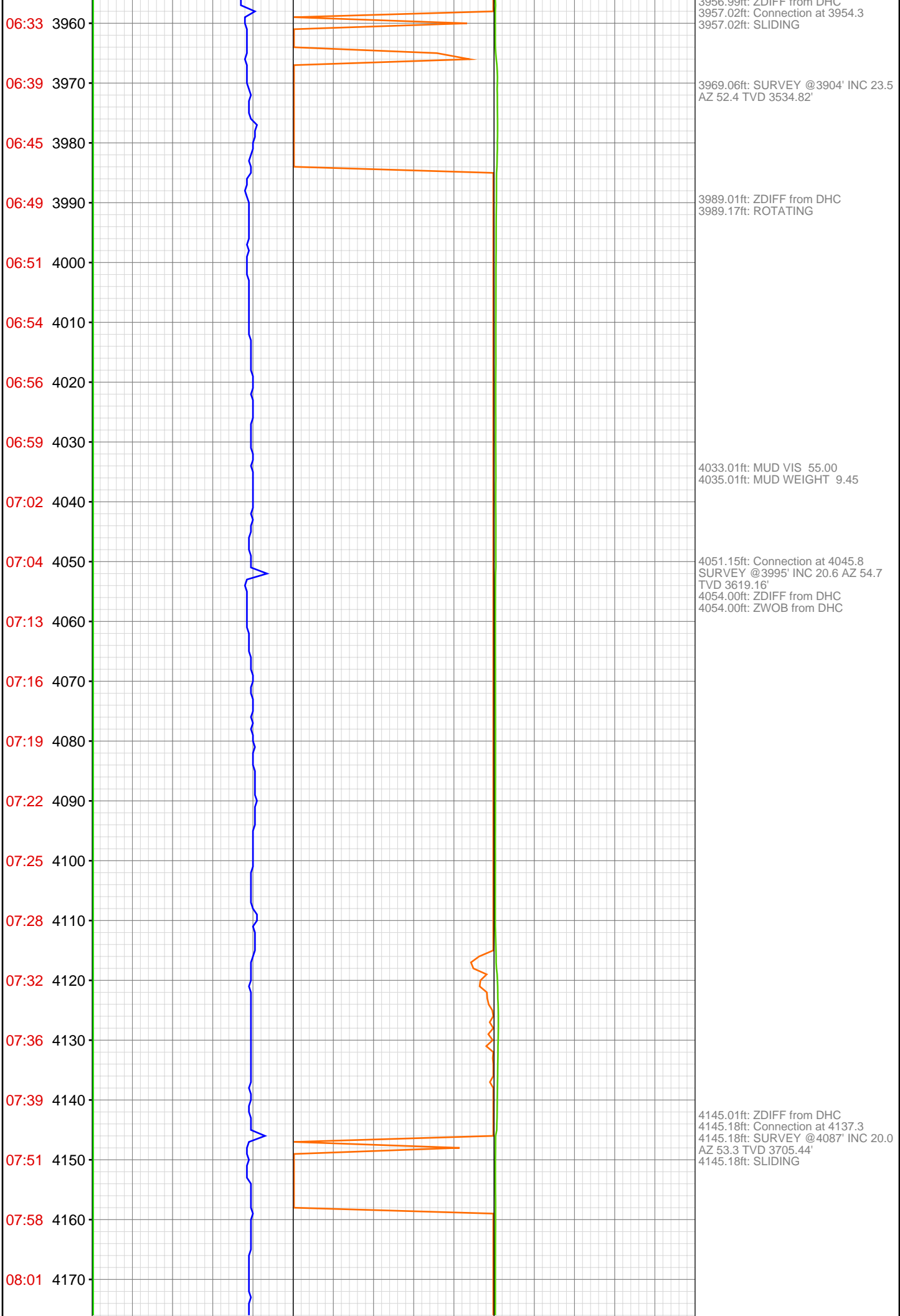




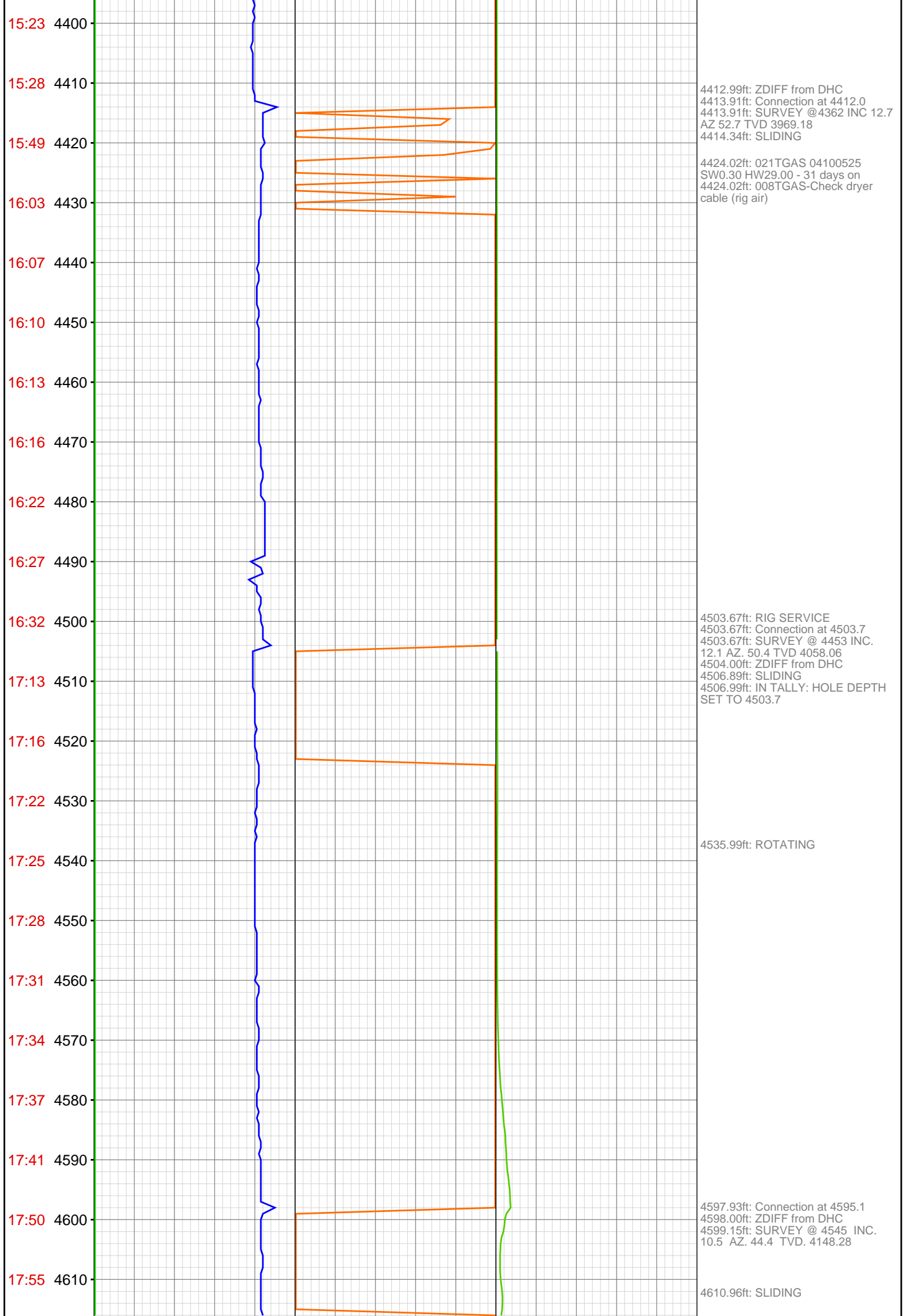


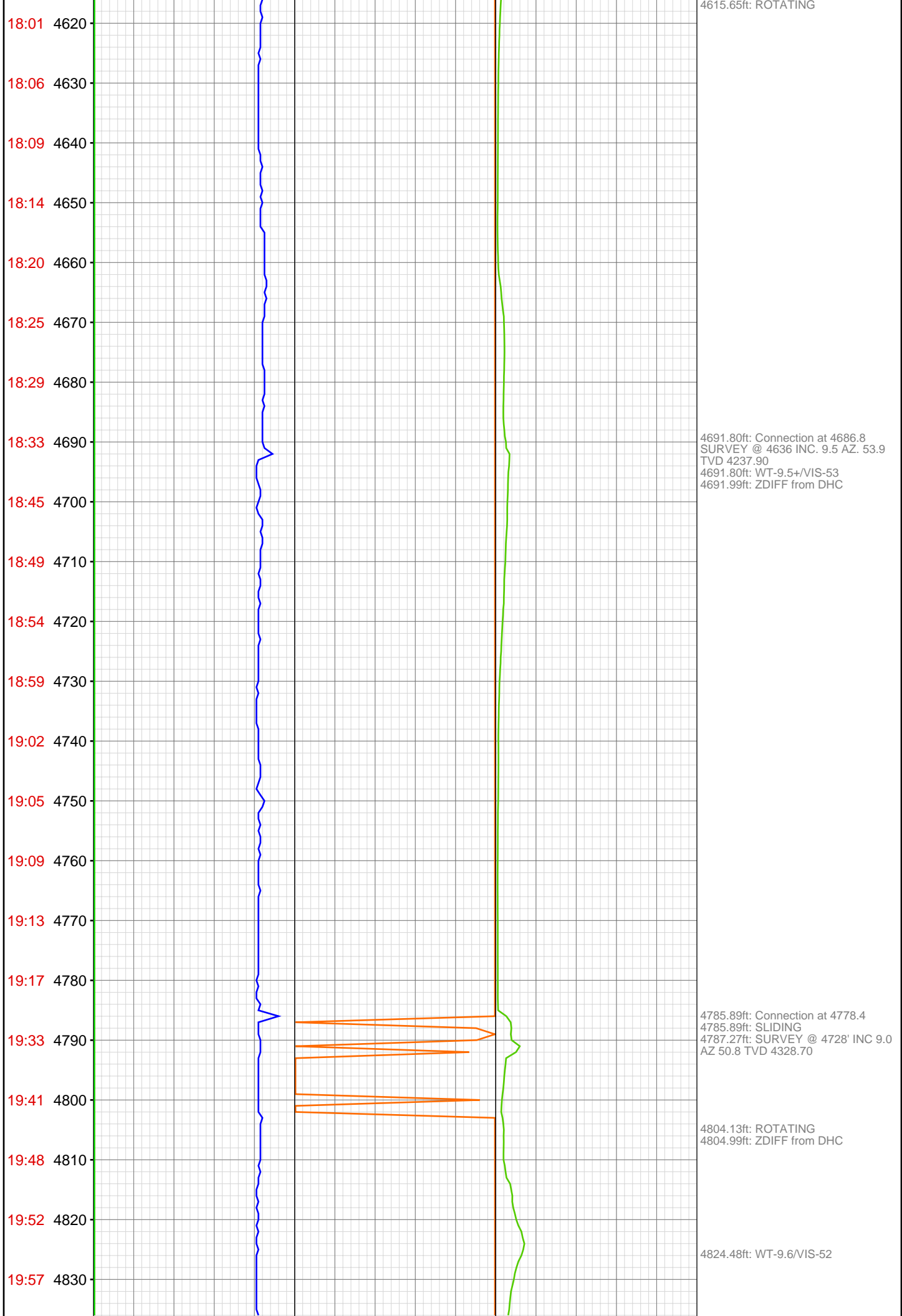


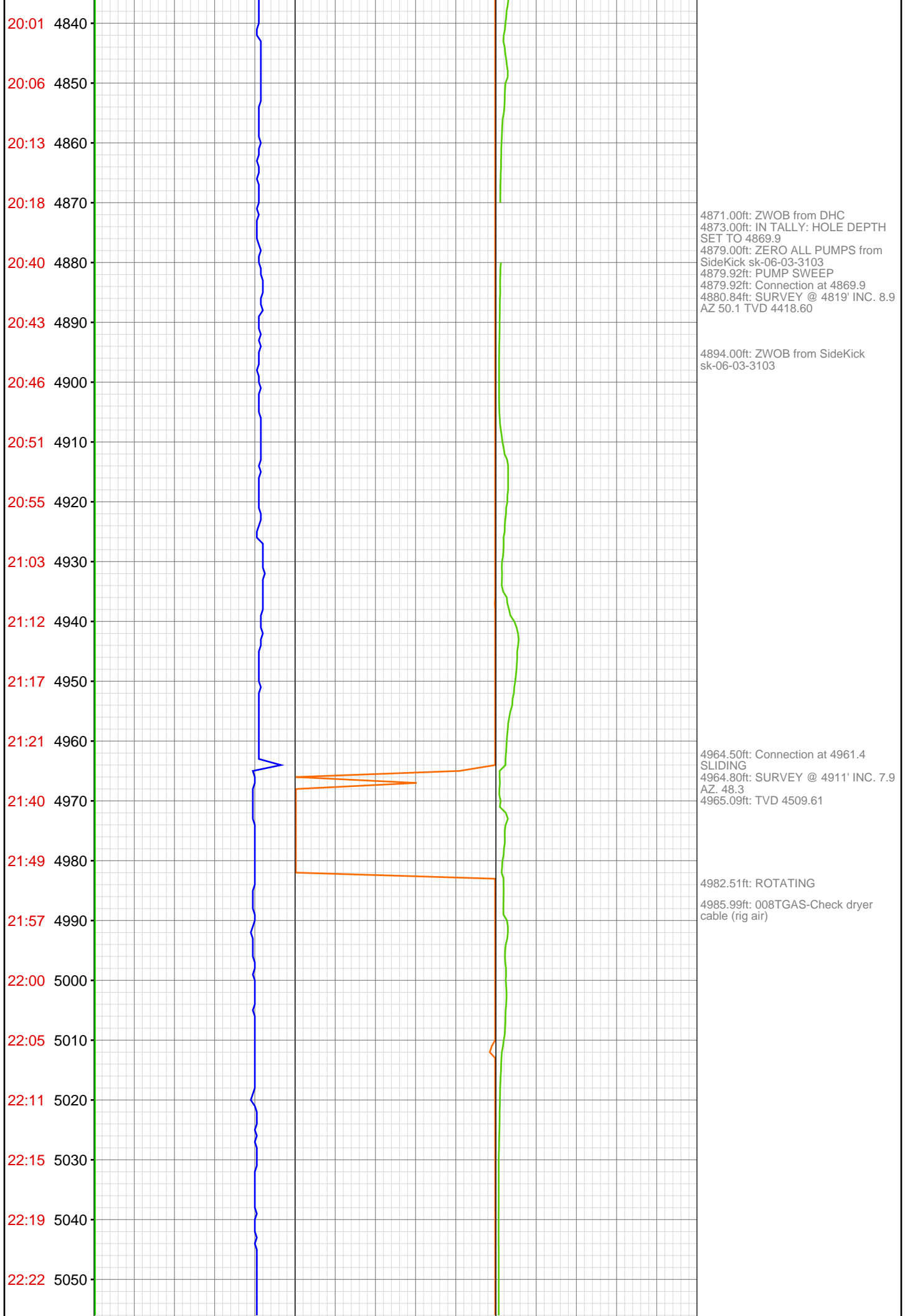




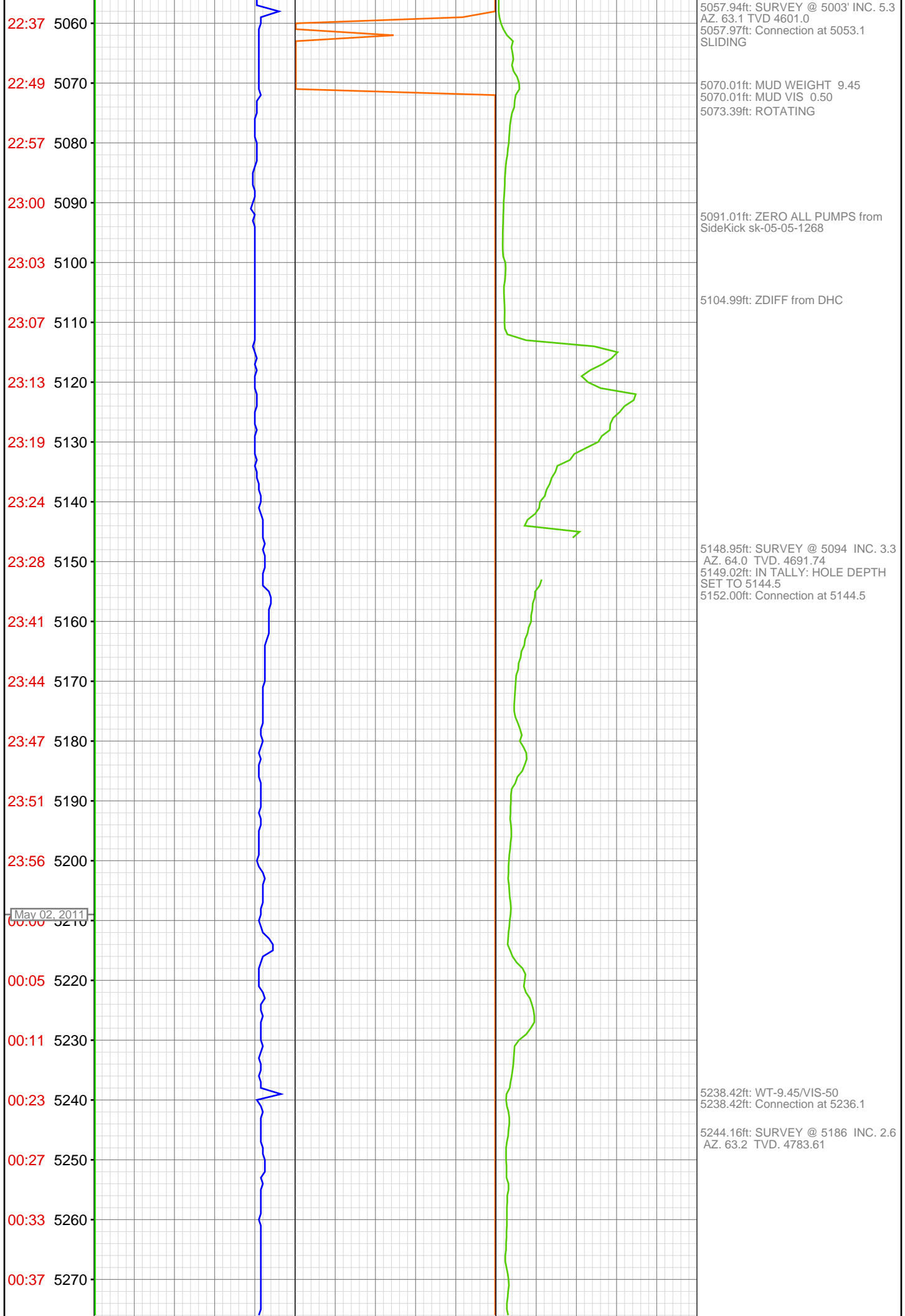


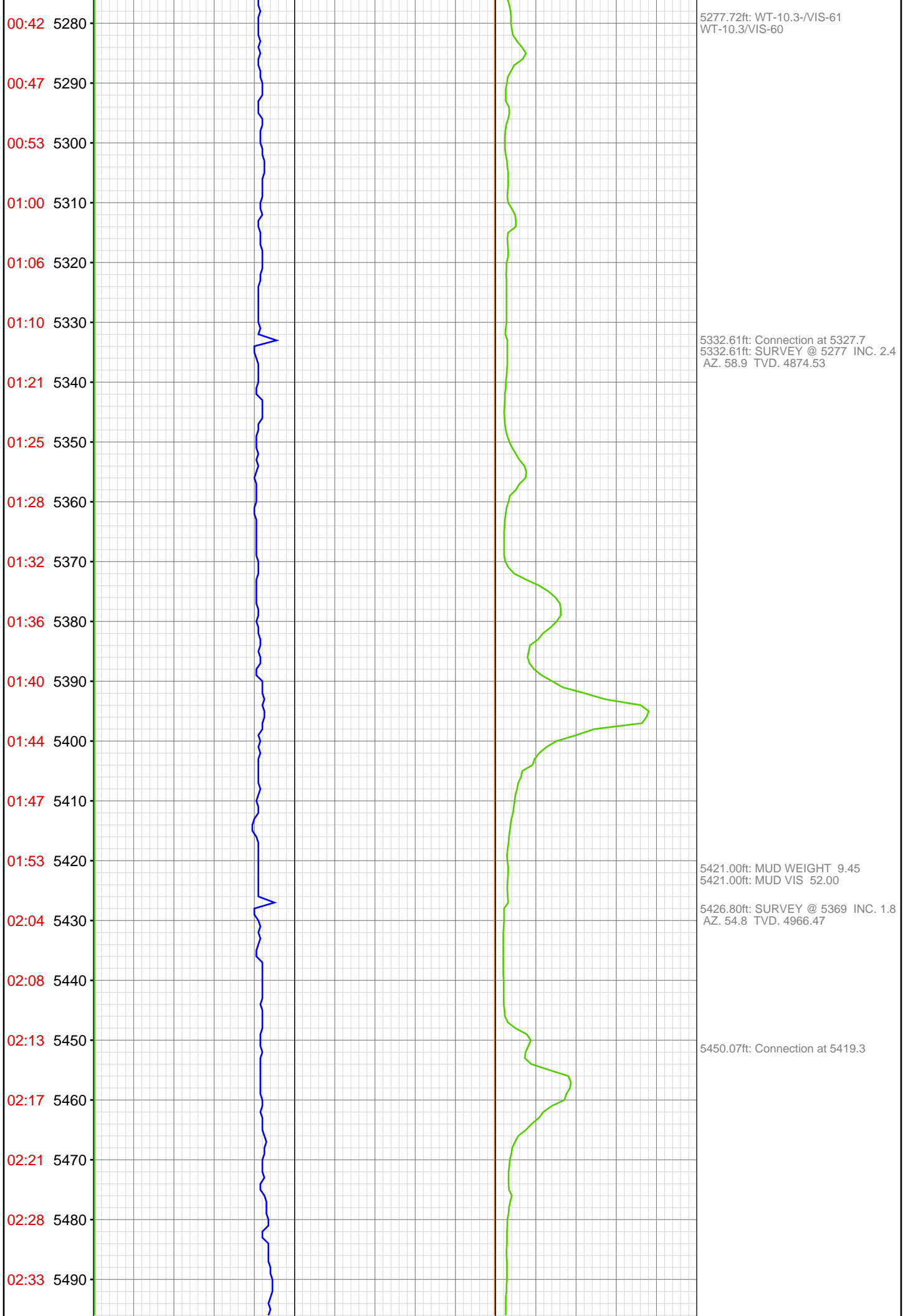


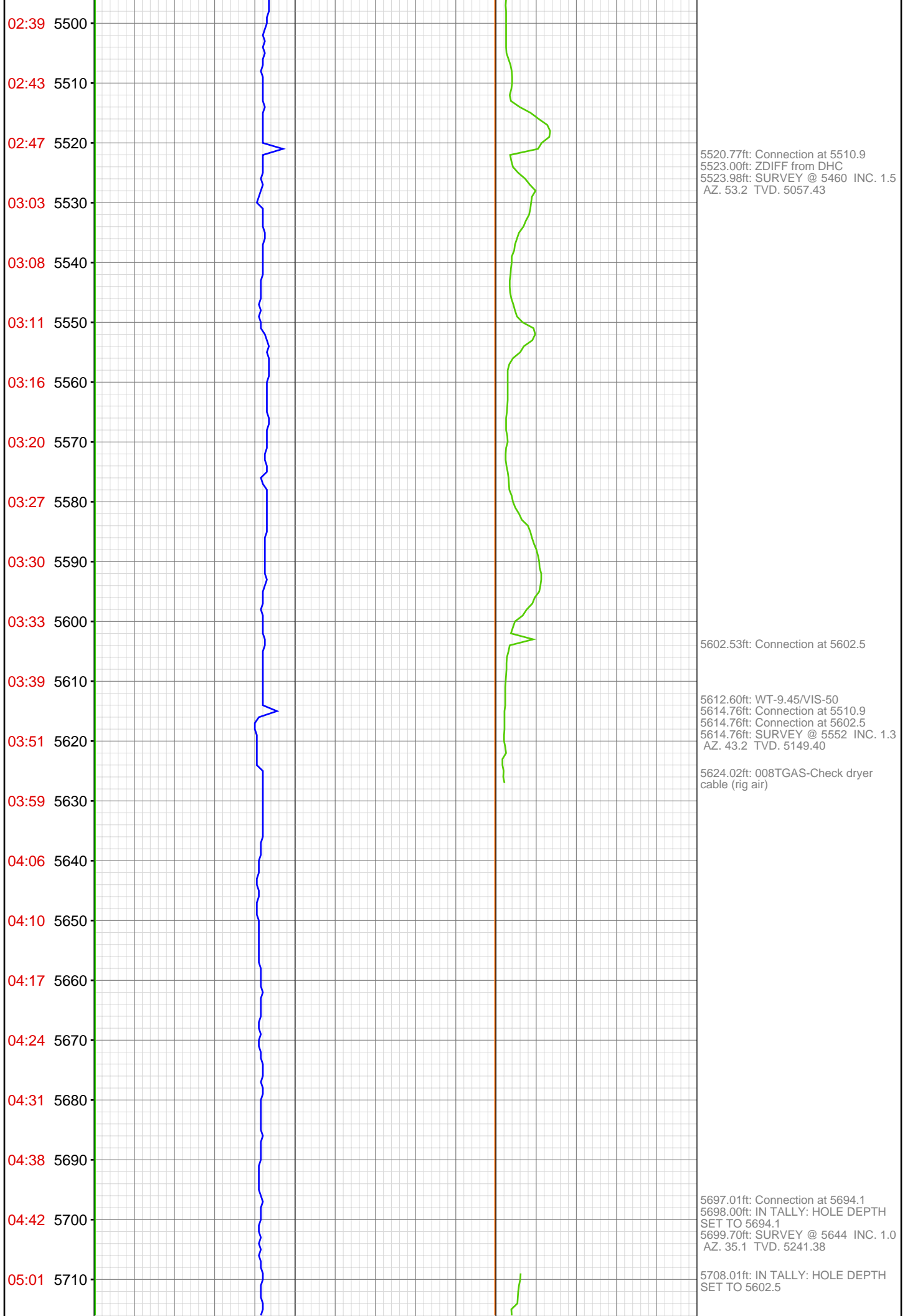


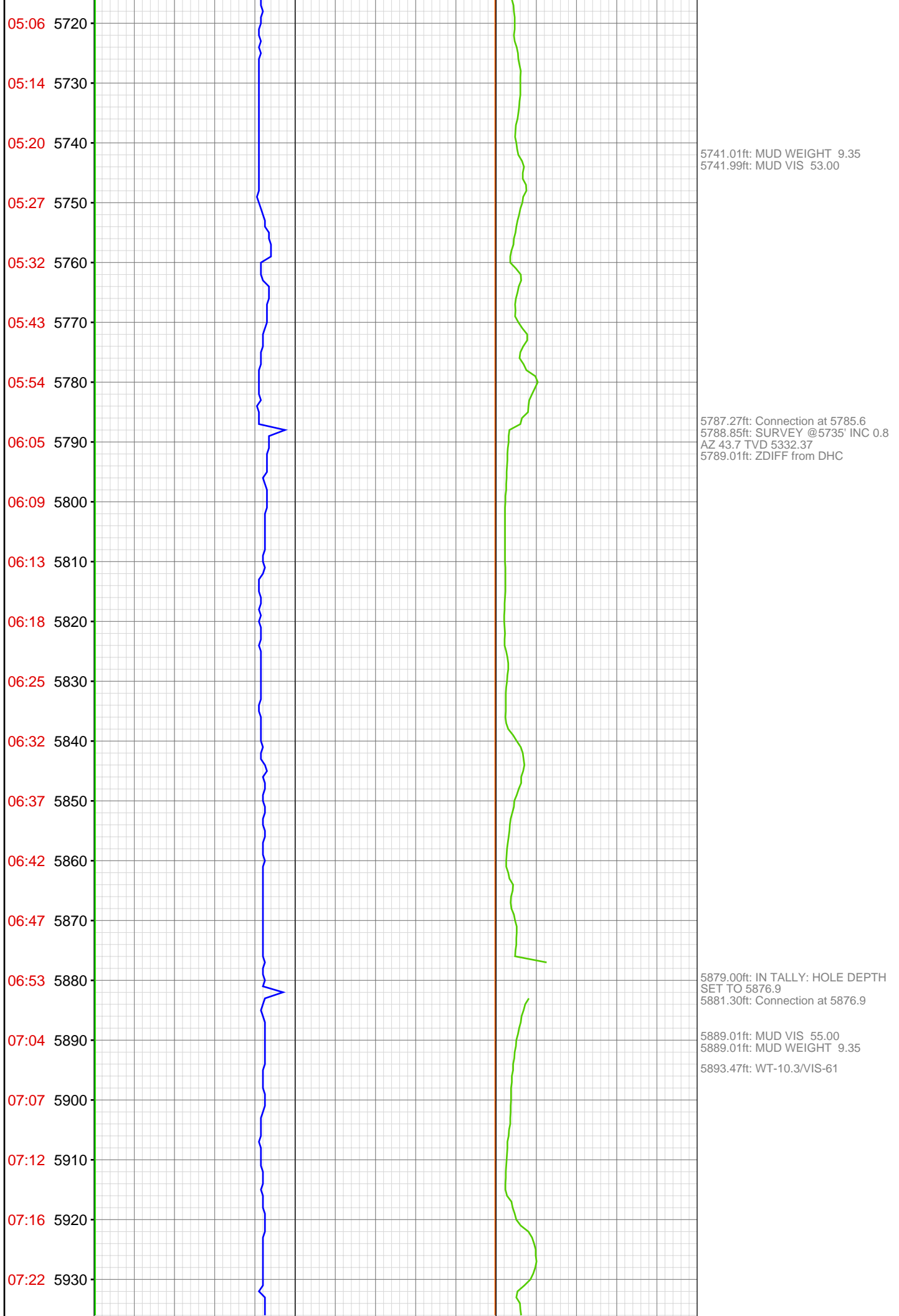


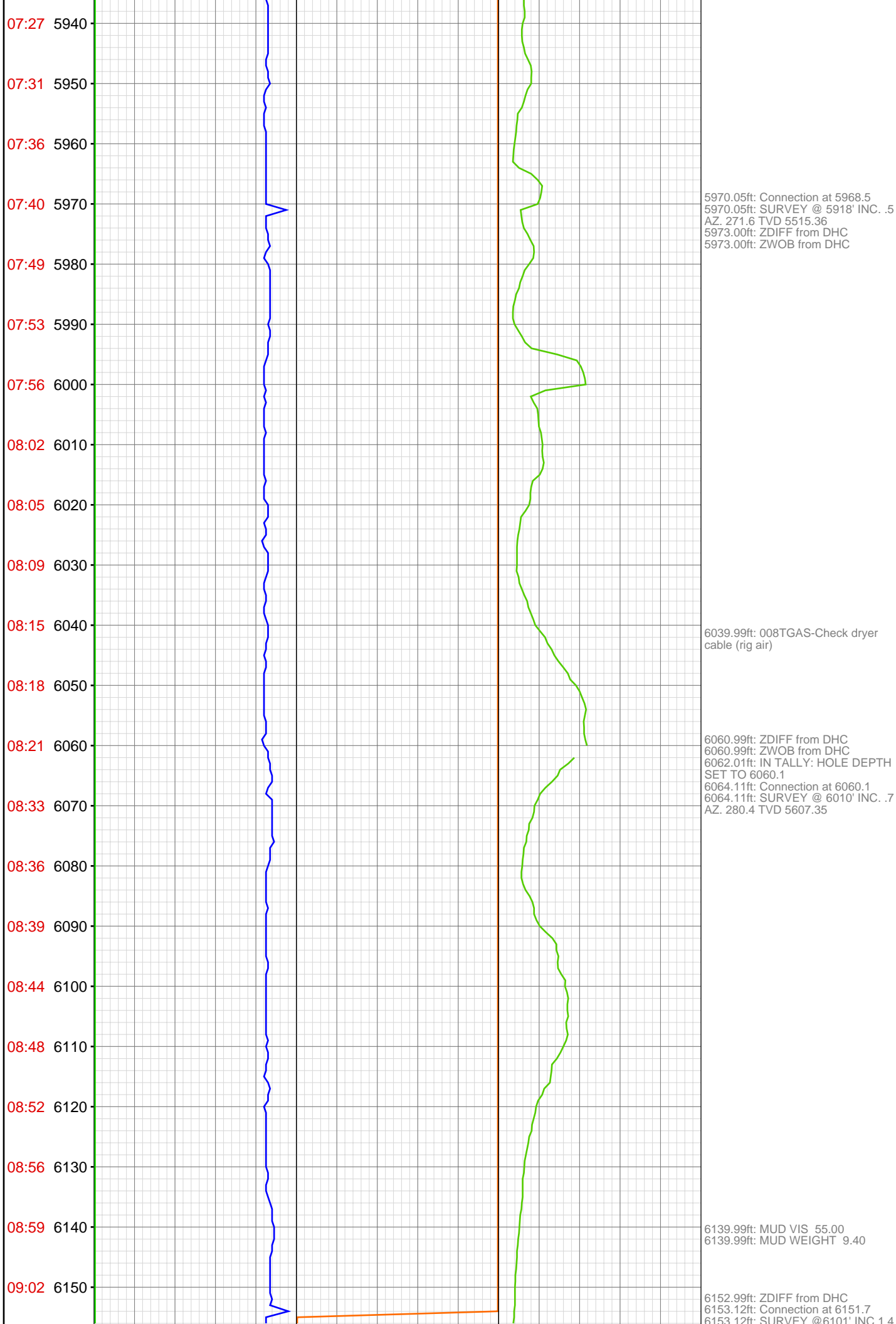


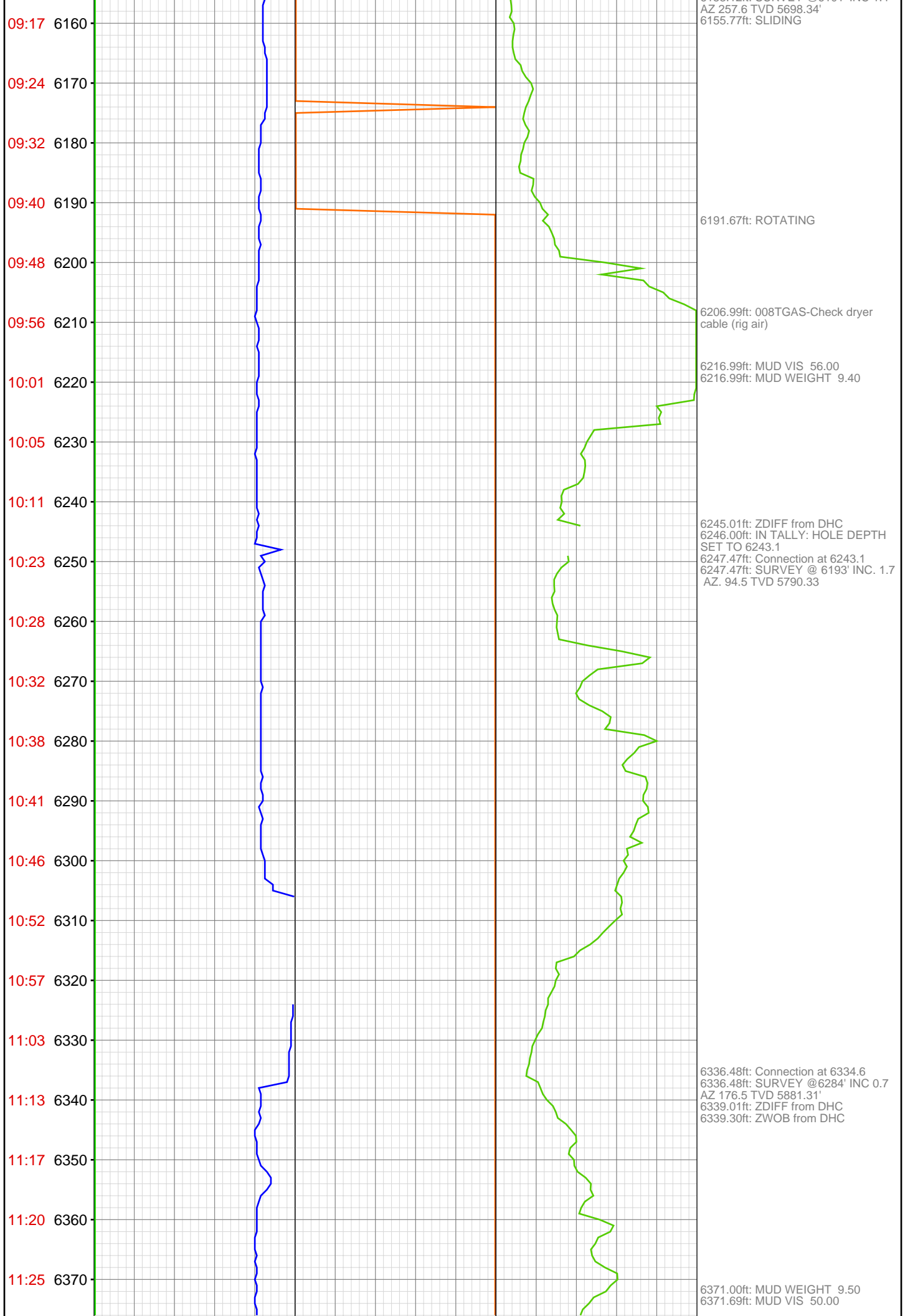


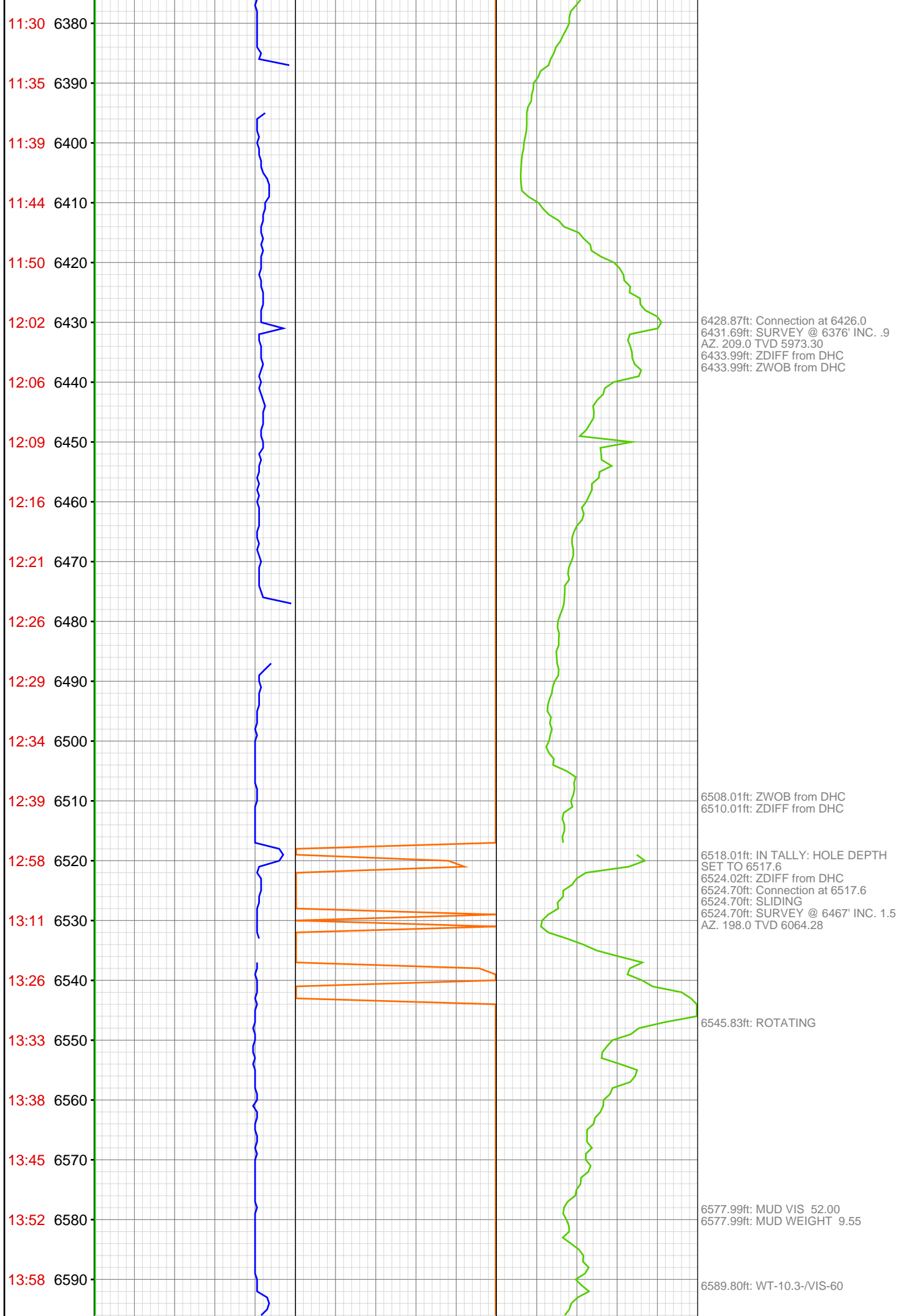


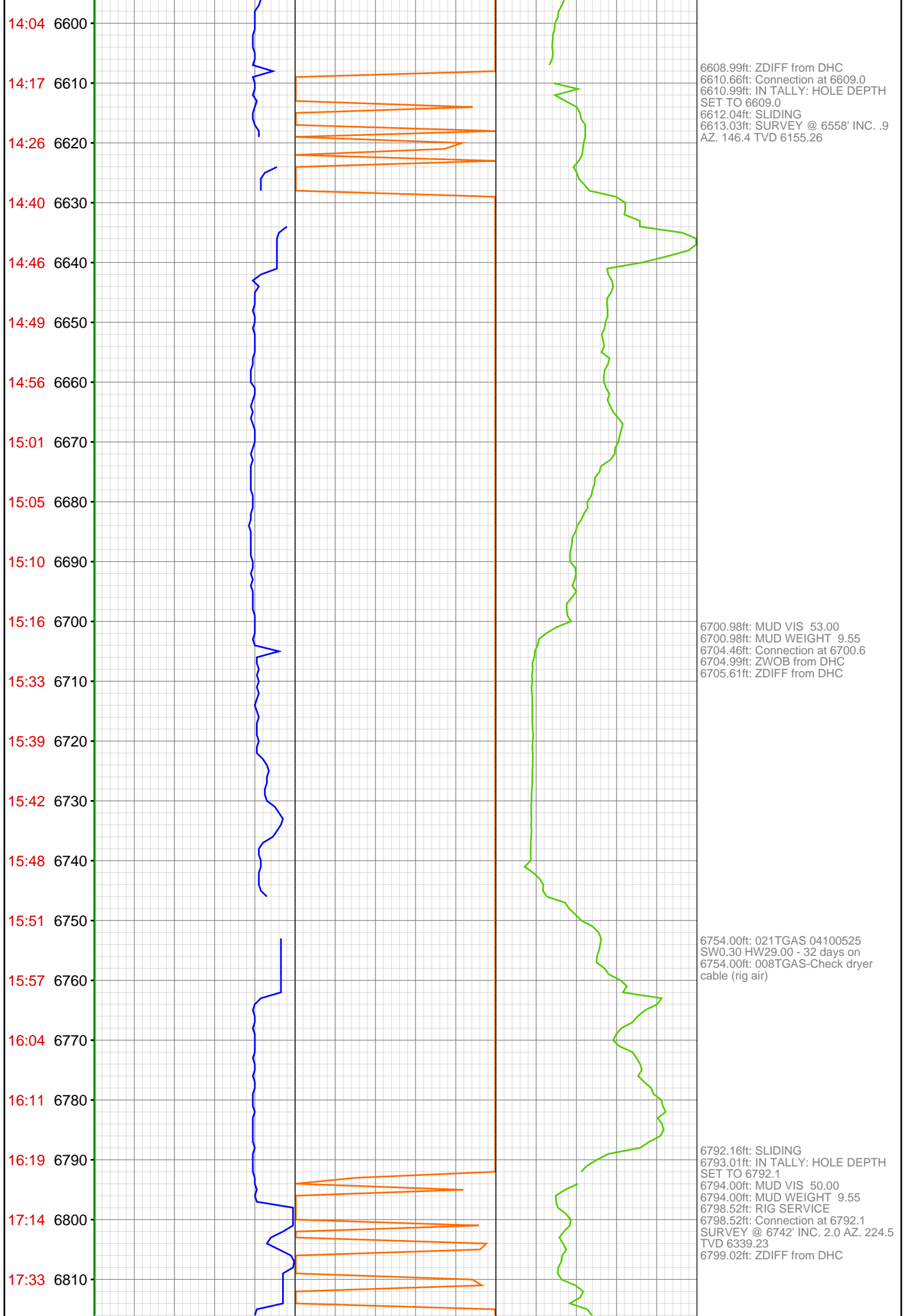




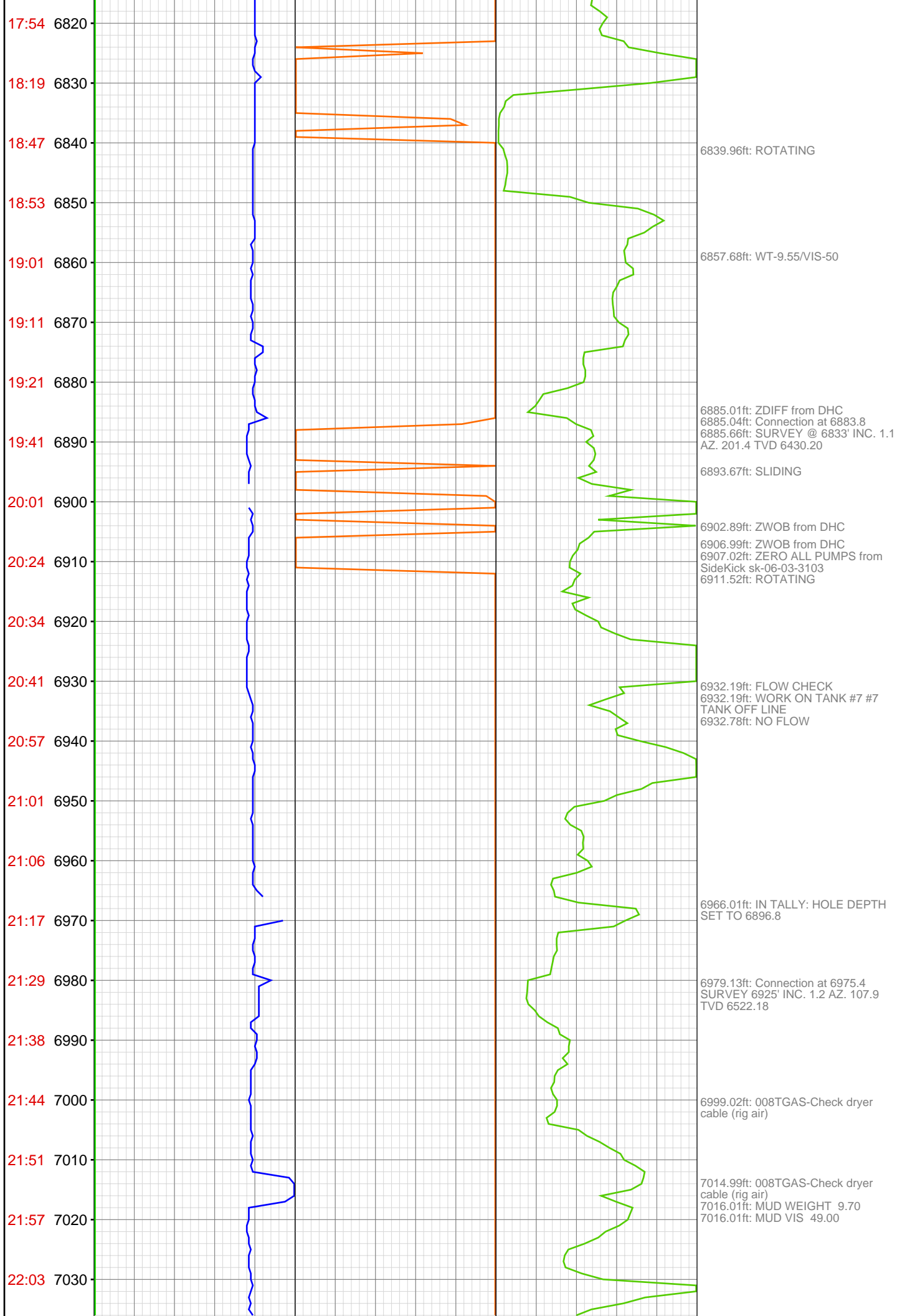


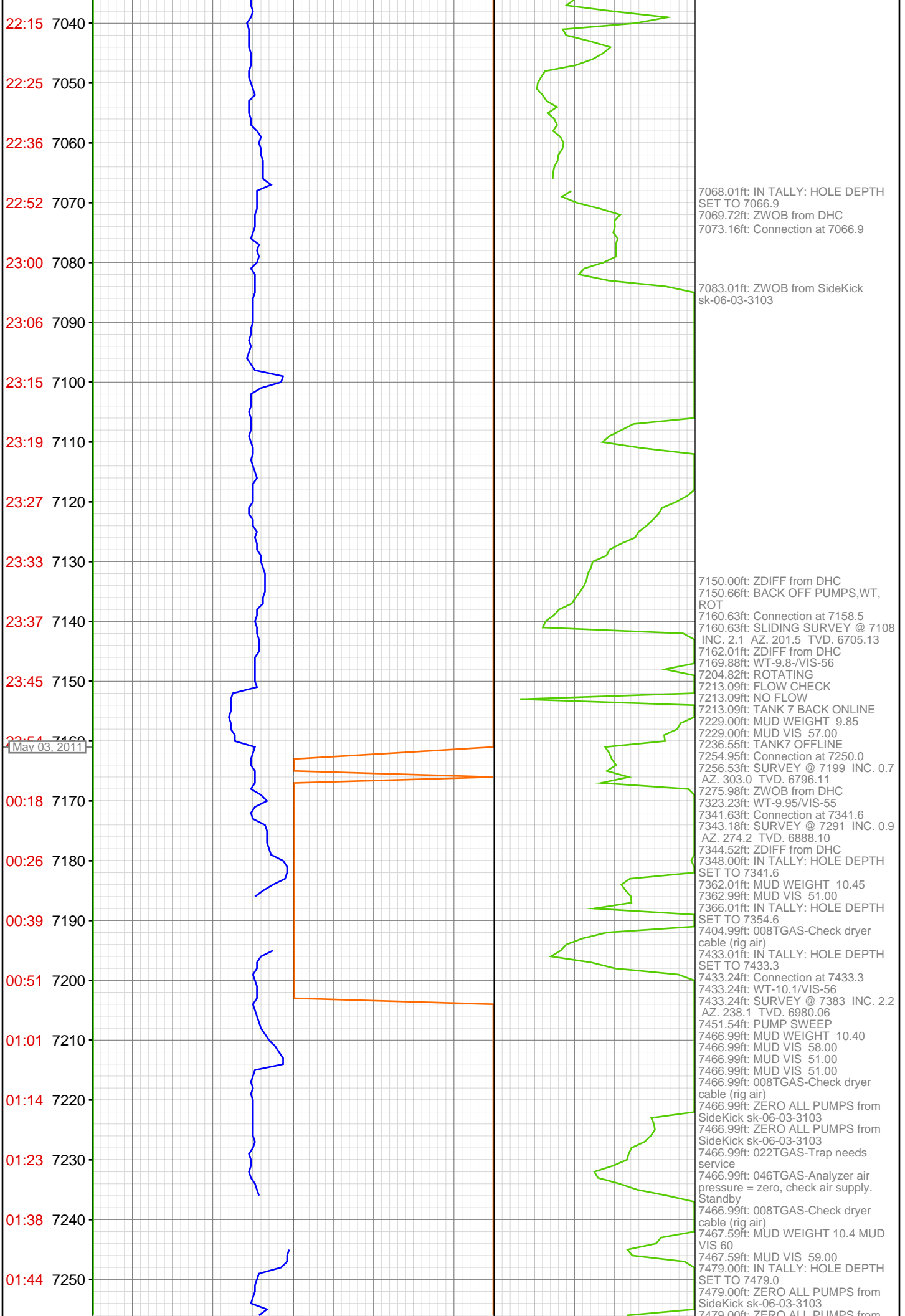


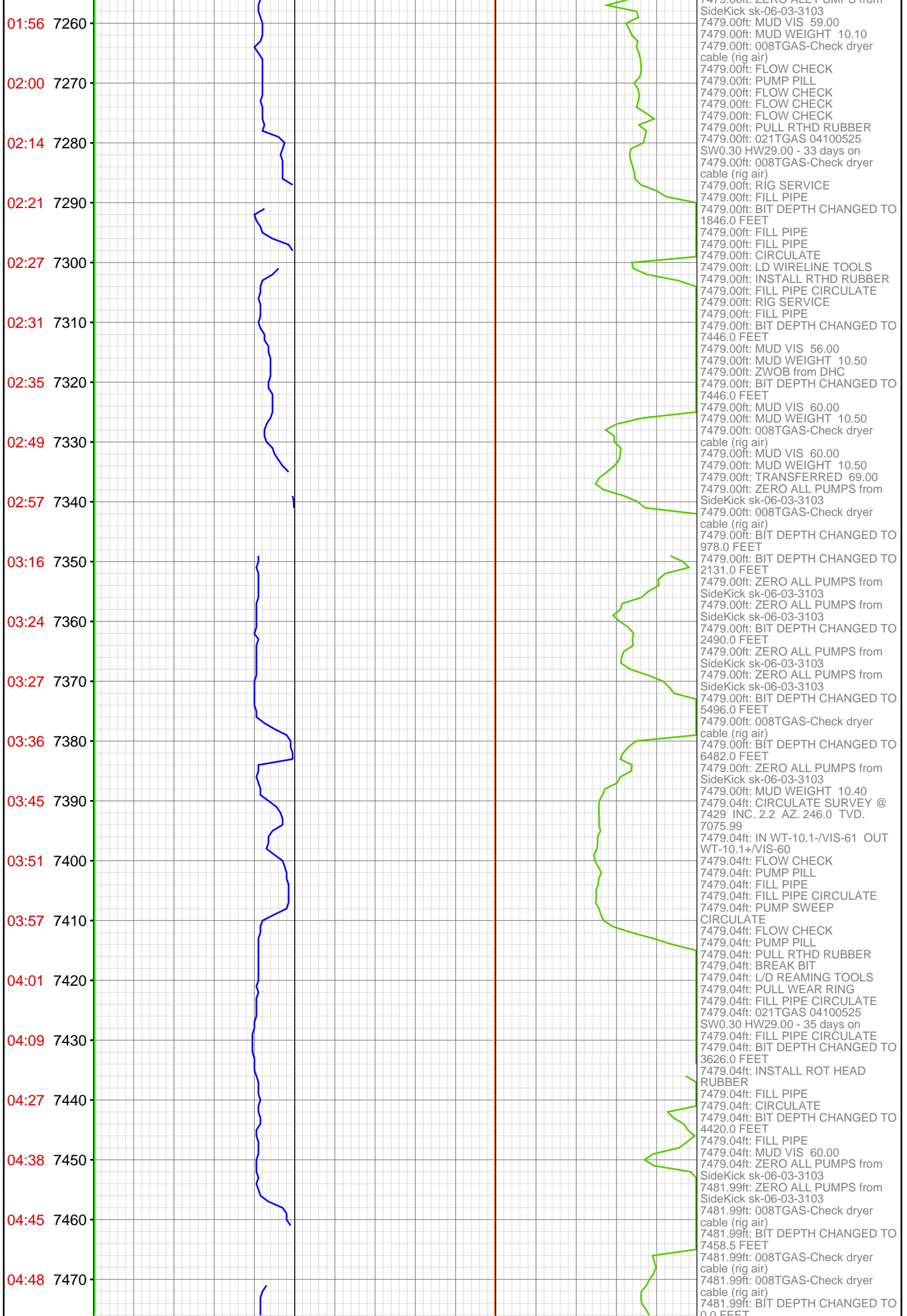












04:52 7480

May 06, 2011

01:29 7490

7500

7481.99ft: 021TGAS 04100525  
SW0.30 HW29.00 - 34 days on  
7481.99ft: 008TGAS-Check dryer  
cable (rig air)  
7481.99ft: BIT DEPTH CHANGED TO  
4241.0 FEET  
7481.99ft: MUD VIS 60.00  
7481.99ft: MUD WEIGHT 10.30  
7481.99ft: ZWOB from DHC  
7481.99ft: HOLE DEPTH CHANGED  
TO 4427.3 FEET  
7489.01ft: HOLE DEPTH CHANGED  
TO 7479.0 FEET  
7489.01ft: BIT DEPTH CHANGED TO  
7337.0 FEET  
7496.00ft: HOLE DEPTH CHANGED  
TO 7467.0 FEET