

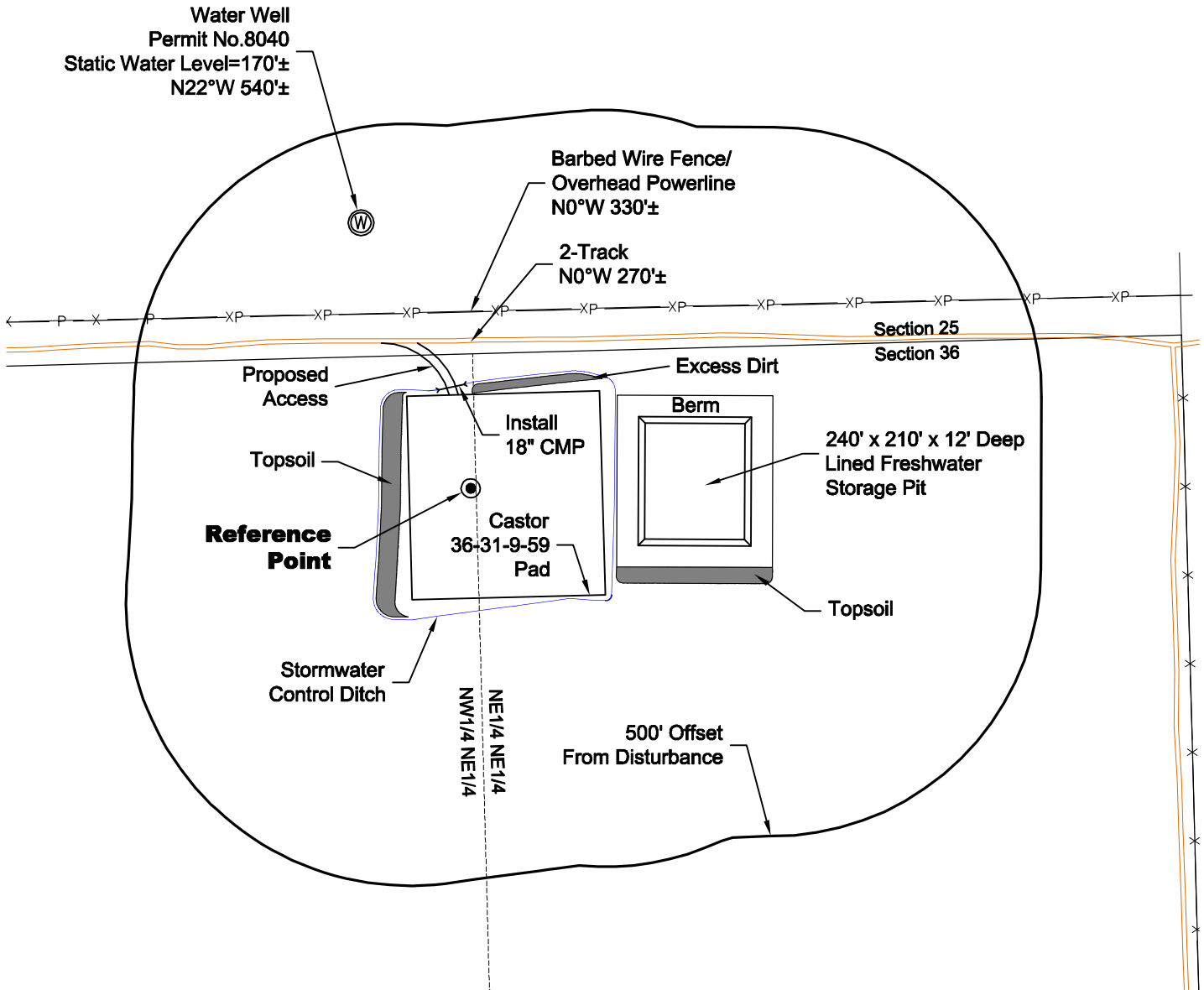
LOCATION DRAWING

VEGETATION:
DRY LAND PASTURE

SURFACE USE:
GRAZING

REFERENCE POINT

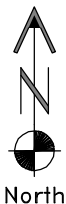
| |
|--------------------------------------|
| LATITUDE: 40.71379 |
| LONGITUDE: -103.92120 |
| FOOTAGE: 250 FNL 1331 FEL |
| GROUND ELEVATION: 4910.6 |
| PDOP: 1.7 DATE: 11/11/2011 |
| INSTRUMENT OPERATOR: MARC WOODARD |



DISTURBANCE ACREAGE:
4.5± DRILLING OPERATIONS
2.3± FRESHWATER STORAGE PIT
1.0± INTERIM RECLAIM

NOTE:
ALL PRODUCTION FACILITIES WILL BE ON PAD.

11/14/11



0 300 600
Graphic Scale in Feet
1 inch = 300 feet



LAND SURVEYING AND MAPPING
LAFAYETTE - WINTER PARK
Ph 303 666 0379 Fx 303 665 6320

CARRIZO OIL & GAS, INC
CASTOR 36-31-9-59 PAD

NW1/4 NE1/4 SEC. 36 T9N R59W
6th PM WELD COUNTY COLORADO