

CONSTRUCTION LAYOUT DRAWING

1 of 2

VEGETATION:
DRY LAND PASTURE

SURFACE USE:
GRAZING

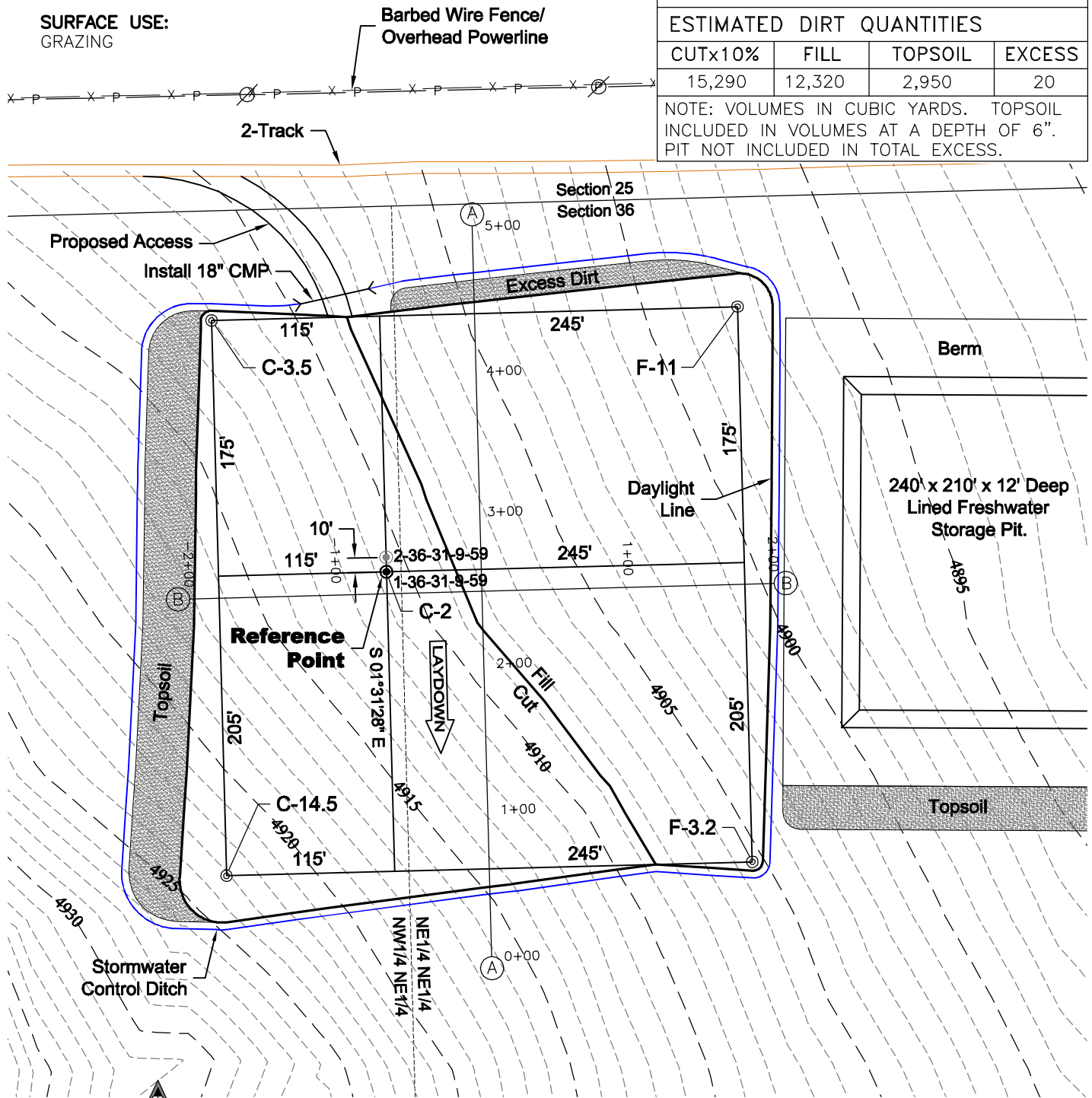
PAD 360'X380' ELEV= 4908.6'

DISTURBED AREA=4.5± ACRES

ESTIMATED DIRT QUANTITIES

CUTx10%	FILL	TOPSOIL	EXCESS
15,290	12,320	2,950	20

NOTE: VOLUMES IN CUBIC YARDS. TOPSOIL INCLUDED IN VOLUMES AT A DEPTH OF 6". PIT NOT INCLUDED IN TOTAL EXCESS.



NOTE:
10% ALLOWANCE IS MADE FOR SOIL EXPANSION.

11/14/11

GEO SURV

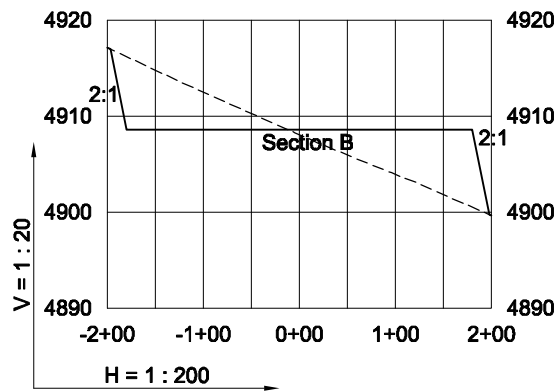
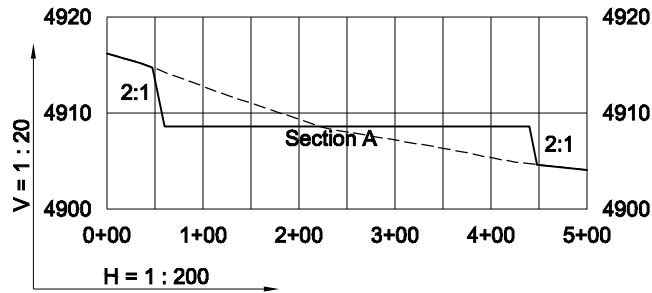
LAND SURVEYING AND MAPPING
LAFAYETTE - WINTER PARK
Ph 303 666 0379 Fx 303 665 6320

CARRIZO OIL & GAS, INC
CASTOR 36-31-9-59 PAD

NW1/4 NE1/4 SEC. 36 T9N R59W
6th PM WELD COUNTY COLORADO

CONSTRUCTION LAYOUT DRAWING

2 of 2



11/14/11

----- Existing Ground
 _____ Proposed Grade



**GEO
SURV**

LAND SURVEYING AND MAPPING
 LAFAYETTE - WINTER PARK
 Ph 303 666 0379 Fx 303 665 6320

CARRIZO OIL & GAS, INC
 CASTOR 36-31-9-59 PAD

NW1/4 NE1/4 SEC. 36 T9N R59W
 6th PM WELD COUNTY COLORADO