

LEASE MAP FOR SECTION 4

COPY OF LEASE ATTACHED FOR FULL LEGAL DESCRIPTION

# Well Location Plat

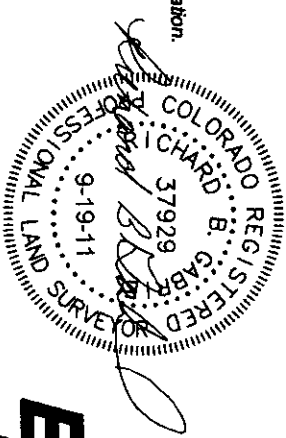
SAMSON RESOURCES COMPANY  
 COLORADO 32-7 #10-3  
 923' FNL & 1351' FWL  
 Sec. 4, T32N, R7W, NMPM  
 La Plata Co., CO  
 Ground Elev. 6284.1 (NGVD 29)  
 (So. Ute 32-7 #10 = 6284.0gr.)  
 Lat. 37.05076° N  
 Long. 107.61847° W (NAD 83)

Field Completion Date: 15 Sep 2011  
 Plat Date: 19 Sep 2011

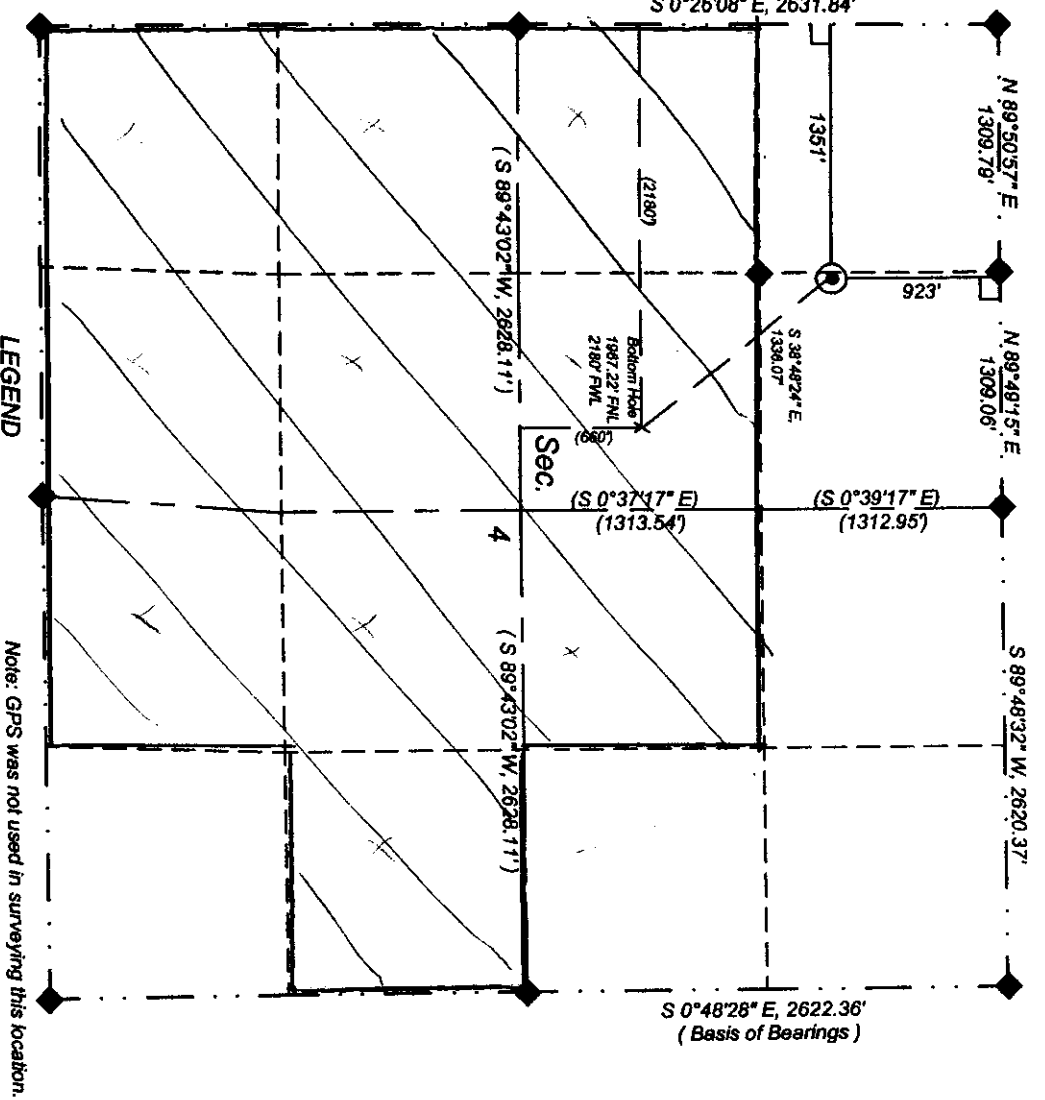
Non-crop Pasture  
 Existing Well Facilities

This is to certify that this plat was prepared from field notes of actual surveys made by me, or under my supervision, and that the same are true and correct to the best of my knowledge and belief.

Richard B. Gabriel  
 Colorado PLS No. 37929  
 Date



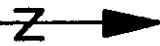
ENERGY SURVEYORS, INC.  
 P.O. BOX 991  
 FARMINGTON, NM 87499  
 FAX: 801-659-4246  
 OFFICE: 505-325-4005  
 CELL: 505-380-8142



## LEGEND

- Proposed Well
- Existing Well
- Sid. So. Ute 3 1/2" Al. Cap w/refs.
- Sid. BLM 3 1/2" Al. Cap w/refs.
- Private Survey Cor. w/refs.
- 90° Symbol
- ( ) Record or Calc. Bearing and Dist.

Note: GPS was not used in surveying this location.



Scale: 1"=1000'

Unless otherwise noted, bearings and distances are field measured.

Rev. 17 Sep 2011