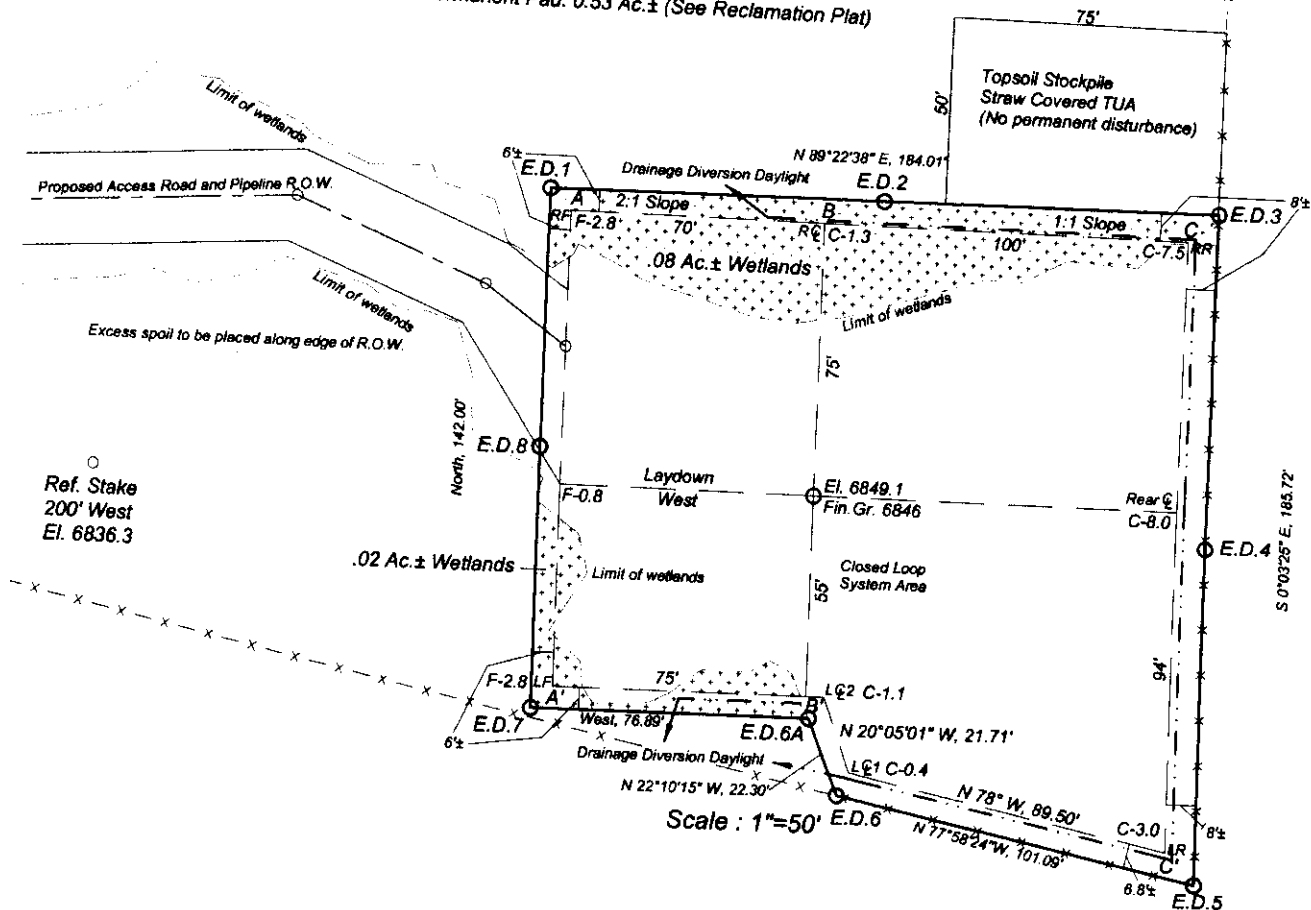


SAMSON RESOURCES COMPANY
 MELSON 34-7-24 #1
 1866' FNL & 383' FWL
 Sec. 19, T34N, R6W, nMPM
 La Plata Co., CO

Ref. Stake
 200' North
 El. 6844.4

Total Area Inside E.D.: 0.68 Ac.±
 Permanent Pad: 0.53 Ac.± (See Reclamation Plat)



A-A' Vert.: 1"=30' Horiz.: 1"=50'

		E		Rev. 27 Aug 2011	
6850					
6840					

B-B'

6850					
6840					

C-C'

6850					
6840					