

Bottom Hole Plat

SAMSON RESOURCES COMPANY

MELSON 34-7-24 #1

1866' FNL & 383' FWL

Sec. 19, T34N, R6W, NMPM

La Plata Co., CO

Ground Elev. 6849.1 gr. (NGVD 29)

(Harper GU #1-13U SWSE Sec. 13=

6734.4 gr.)

Lat. 37.17874° N

Long. 107.54910° W (NAD 83)

Field Completion Date: 20 July 2011

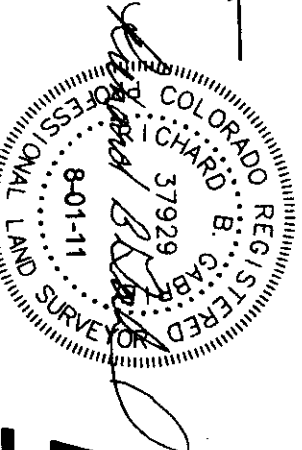
Plat Date: 02 Aug 2011

Non-crop Pasture

Improvements on Sht. 3

This is to certify that this plat was prepared from field notes of actual surveys made by me, or under my supervision, and that the same are true and correct to the best of my knowledge and belief.

Richard B. Gabriel
Colorado PLS No. 37929



ENERGY SURVEYORS, INC.

P.O. BOX 991

FARMINGTON, NM 87499

FAK: 801-659-4246

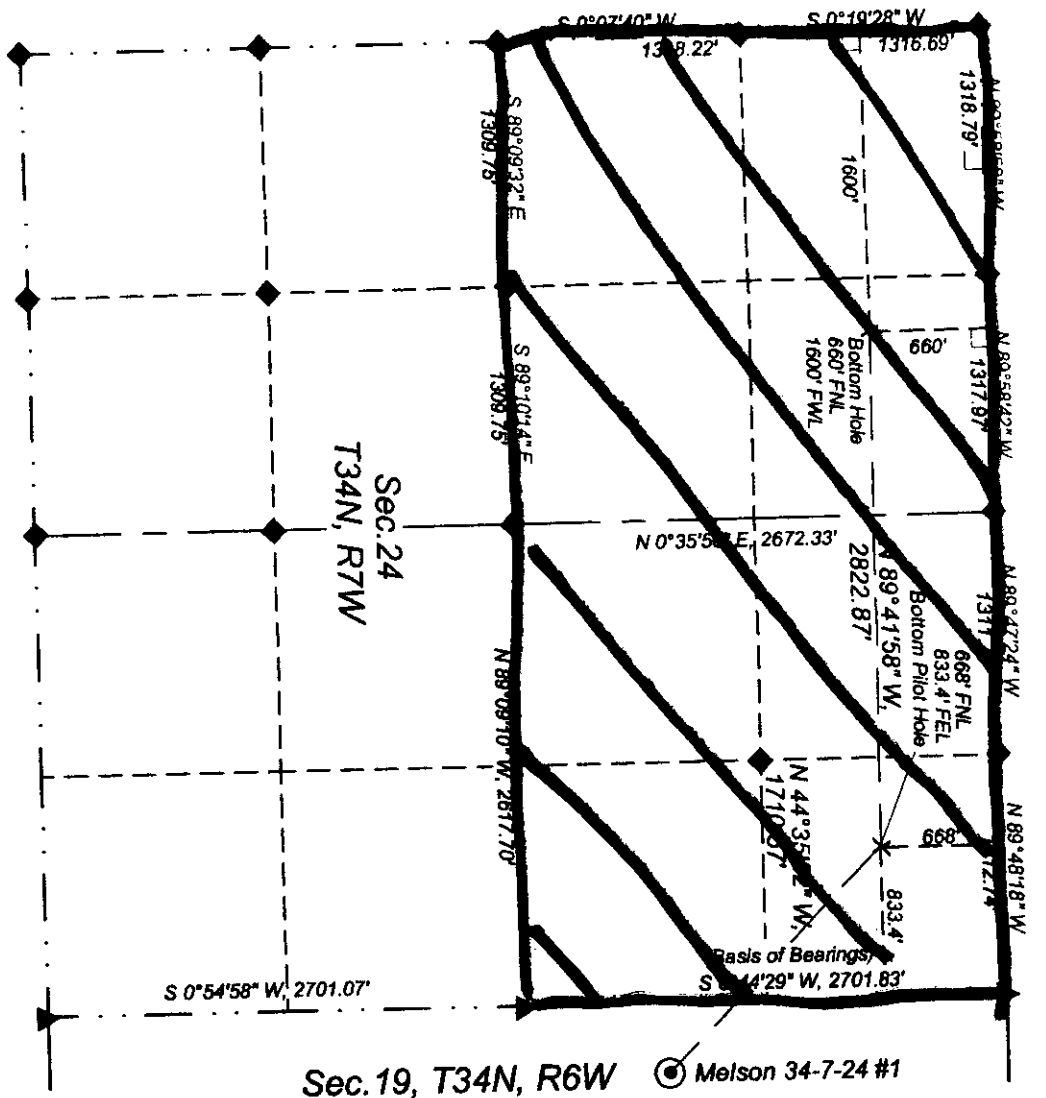
OFFICE: 505-325-4005

CELL: 505-360-8142

Rev. 24 Nov 2009, 29 Jan 2010, 02 Aug 2011

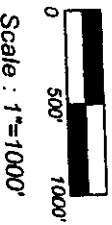
Sec. 19, T34N, R6W

Melson 34-7-24 #1



LEGEND

- X Proposed Bottom Hole
 - Proposed Well
 - ◆ Std. So. Ute 3 1/2" Al. Cap w/re/s.
 - ▲ Std. BLM 3 1/2" Al. Cap w/re/s.
 - Private Survey Cor. w/re/s.
 - ⊥ 90° Symbol
 - () Record or Calc. Bearing and Dist.
- Unless otherwise noted, bearings and distances are field measured.



Scale: 1"=1000'

Melson 34-7-24 #1
Lease Map