

Bottom Hole Plat

SAMSON RESOURCES COMPANY
MELSON 34-7-24 #1

1866' FNL & 383' FWL
Sec. 19, T34N, R6W, NMPM
La Plata Co., CO

Ground Elev. 6849.1 gr. (NGVD 29)
(Harper GU #1-13U SWSE Sec. 13=

6734.4 gr.)

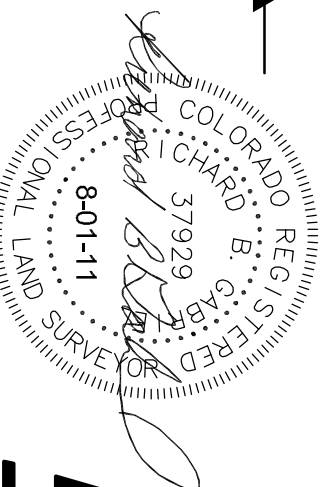
Lat. 37.17874° N
Long. 107.54910° W (NAD 83)

Field Completion Date: 20 July 2011
Plat Date: 02 Aug 2011

Non-crop Pasture
Improvements on Sht. 3

This is to certify that this plat was prepared from field notes of actual surveys made by me, or under my supervision, and that the same are true and correct to the best of my knowledge and belief.

Richard B. Gabriel
Colorado PLS No. 37929

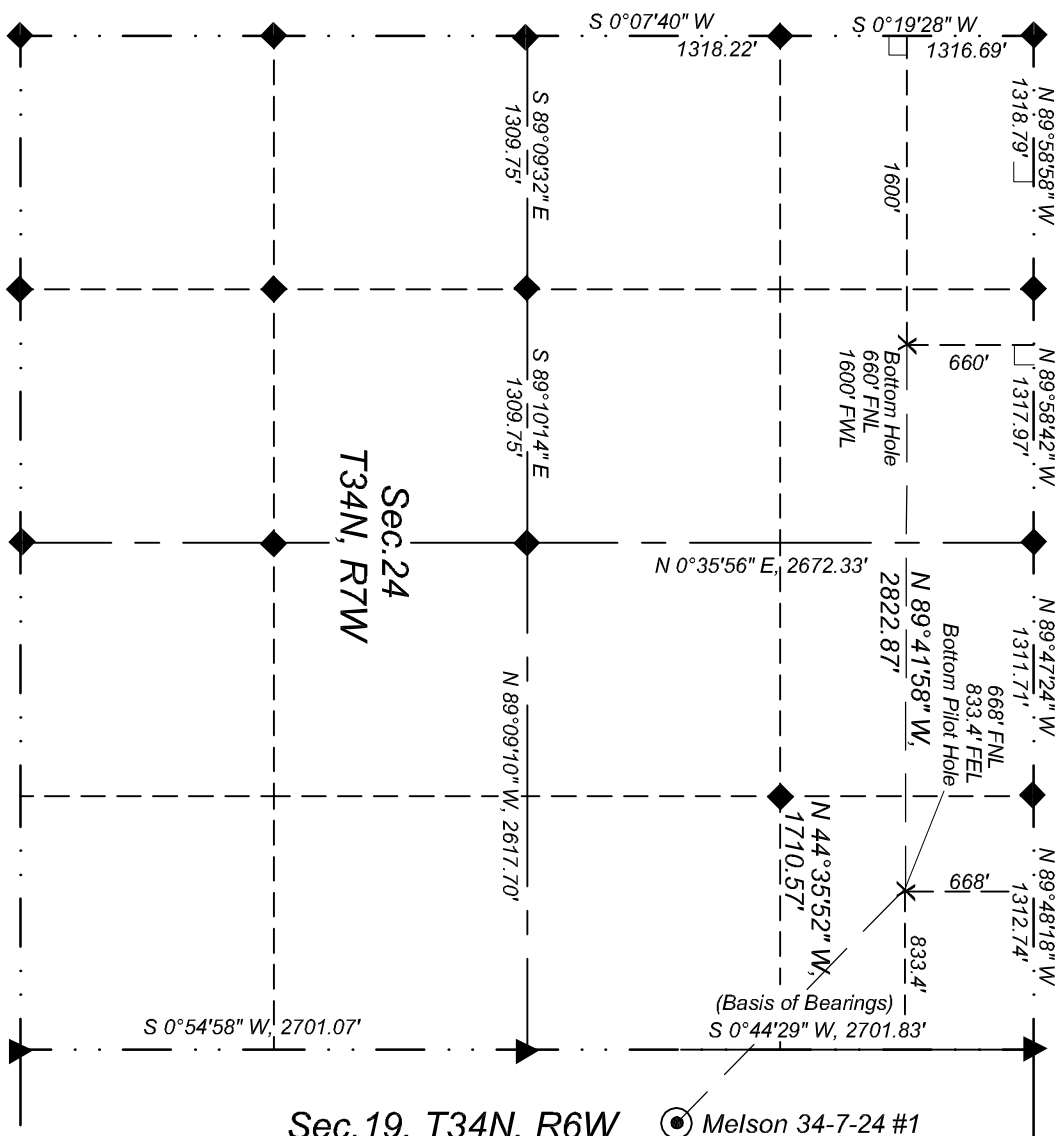


E

ENERGY SURVEYORS, INC.

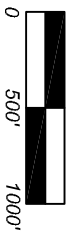
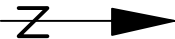
P.O. BOX 991
FARMINGTON, NM 87499

FAK: 801-659-4246
OFFICE: 505-325-4005
CELL: 505-360-8142



LEGEND

- X Proposed Bottom Hole
- Proposed Well
- ◆ Std. So. Ute 3½" Al. Cap w/refs.
- ▲ Std. BLM 3½" Al. Cap w/refs.
- Private Survey Cor. w/refs.
- └ 90° Symbol
- () Record or Calc. Bearing and Dist.



Scale : 1"=1000'

Unless otherwise noted, bearings and distances are field measured.

Sht. 2 of 2

Rev. 24 Nov 2009, 29 Jan 2010, 02 Aug 2011