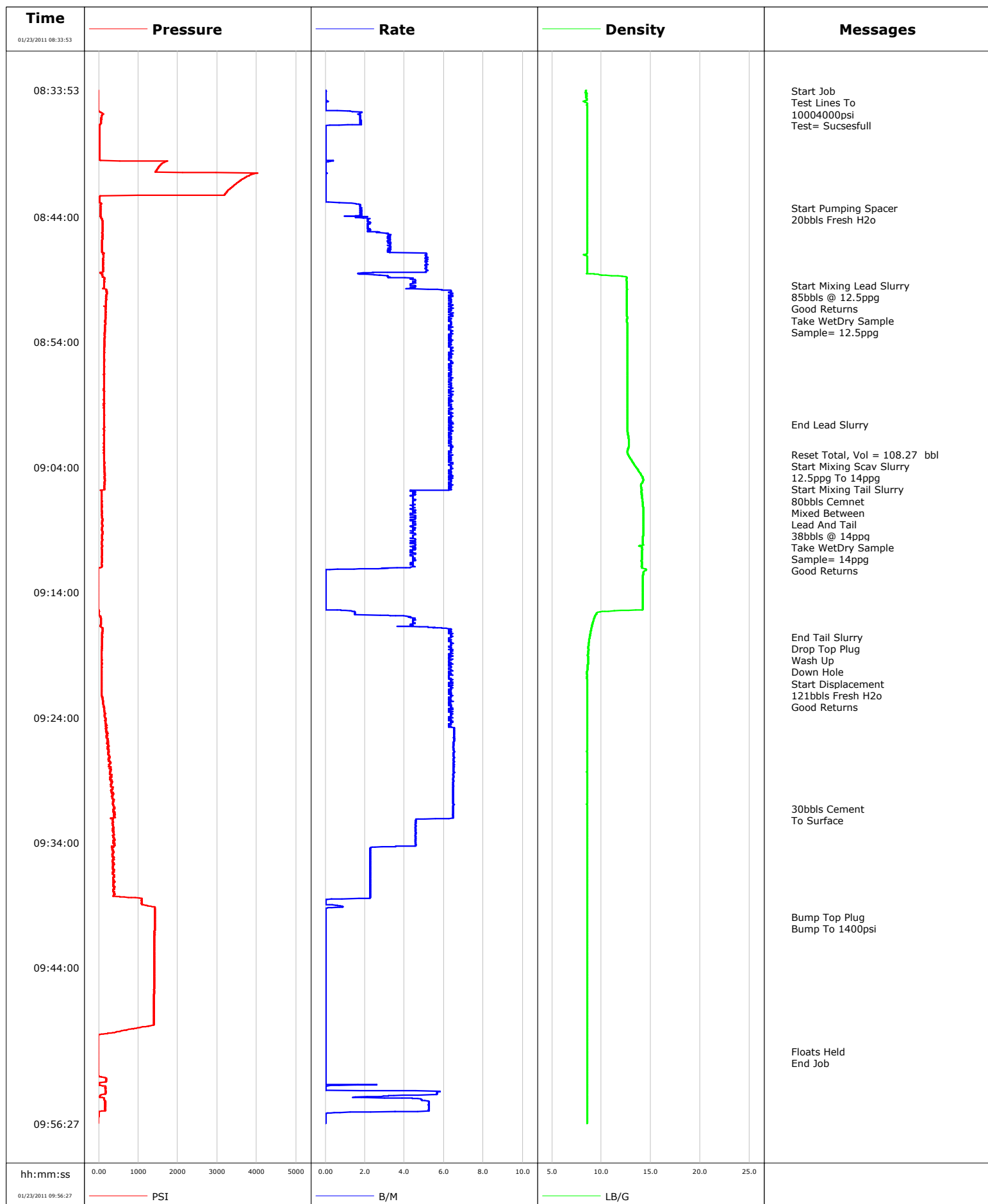


Well	MF03C-16	Client	ENCANA
Field	N PARACHUTE	SIR No.	BAD4-00286
Engineer		Job Type	SURFACE
Country	United States	Job Date	01-23-2011





Cementing Service Report

				Customer ENCANA			Job Number BAD4-00286								
Well MF03C-16			Location (legal) N PARACHUTE			Schlumberger Location			Job Start Jan/23/2011						
Field N PARACHUTE			Formation Name/Type			Deviation		Bit Size		Well MD		Well TVD			
County GARFIELD			State/Province Colorado			BHP		BHST		BHCT		Pore Press. Gradient			
Well Master 0631240403			API/UWI												
Rig Name PATTERSON 303		Drilled For Gas		Service Via Land		Casing/Liner									
Offshore Zone		Well Class New		Well Type Development		Depth, ft		Size, in		Weight, lb/ft		Grade		Thread	
						1614.0		9.630		36.0				8RD	
Drilling Fluid Type		Max. Density		Plastic Viscosity		0.0		0.000		0.0					
Service Line Cementing		Job Type SURFACE				Tubing/Drill Pipe									
Max. Allowed Tubing Press		Max. Allowed Ann. Press		WellHead Connection Single Cement head		Depth,		Size,		Weight,		Grade		Thread	
Service Instructions 20bbls Frtresh Water 226sks 12.5ppg 139sks 14ppg 121bbls Displacement						Perforations/Open Hole									
						Top,		Bottom,				No. of Shots		Total Interval	
Treat Down Casing				Displacement 121.0 bbl				Packer Type				Packer Depth			
Tubing Vol.				Casing Vol. 124.0 bbl				Annular Vol. 100.0 bbl				Openhole Vol. 234.0 bbl			
Casing/Tubing Secured <input checked="" type="checkbox"/>		1 Hole Volume Circulated prior to Cement <input checked="" type="checkbox"/>		Casing Tools				Squeeze Job							
Lift Pressure 799 psi				Shoe Type Guide				Squeeze Type							
Pipe Rotated <input type="checkbox"/>		Pipe Reciprocated <input type="checkbox"/>		Shoe Depth 1624.0 ft				Tool Type							
No. Centralizers		Top Plugs 1		Bottom Plugs		Stage Tool Type				Tool Depth					
Cement Head Type Single				Stage Tool Depth				Tail Pipe Size							
Job Scheduled For Jan/23/2011		Arrived on Location Jan/23/2011		Leave Location Jan/23/2011		Collar Type Diff-Fill				Tail Pipe Depth					
						Collar Depth 1567.0 ft				Sqz. Total Vol.					
Date	Time 24-hr clock	Treating Pressure PSI	Flow Rate B/M	Density LB/G	Volume BBL	Message									
01/23/2011	07:57:39					Started Acquisition									
01/23/2011	07:57:42					Cement 1614'									
01/23/2011	07:57:43					9 5/8 Surface Casing									
01/23/2011	07:57:43					Held Safety Meeting									
01/23/2011	08:33:53	-14	0.0	8.51	0.0										
01/23/2011	08:33:56					Start Job									
01/23/2011	08:33:56	-14	0.0	8.41	0.0										
01/23/2011	08:33:58					Test Lines To									
01/23/2011	08:33:58	-14	0.0	8.43	0.0										
01/23/2011	08:33:59					1000&4000psi									
01/23/2011	08:33:59					Test= Sucsesfull									
01/23/2011	08:33:59	-14	0.0	8.42	0.0										
01/23/2011	08:34:09	-14	0.0	8.48	0.0										
01/23/2011	08:34:39	-14	0.0	8.51	0.0										
01/23/2011	08:35:09	-14	0.0	8.55	0.0										
01/23/2011	08:35:39	41	1.8	8.56	0.2										
01/23/2011	08:36:09	65	1.8	8.56	1.1										
01/23/2011	08:36:39	28	1.3	8.56	1.9										
01/23/2011	08:37:09	16	0.0	8.56	2.0										
01/23/2011	08:37:39	15	0.0	8.55	2.0										
01/23/2011	08:38:09	15	0.0	8.55	2.0										
01/23/2011	08:38:39	15	0.0	8.55	2.0										

Well			Field		Job Start	Customer	Job Number
MF03C-16			N PARACHUTE		Jan/23/2011	ENCANA	BAD4-00286
Date	Time 24-hr clock	Treating Pressure PSI	Flow Rate B/M	Density LB/G	Volume BBL	Message	
01/23/2011	08:39:09	15	0.0	8.55	2.0		
01/23/2011	08:39:39	1656	0.0	8.55	2.0		
01/23/2011	08:40:09	1491	0.0	8.55	2.0		
01/23/2011	08:40:39	3842	0.0	8.55	2.0		
01/23/2011	08:41:09	3575	0.0	8.55	2.0		
01/23/2011	08:41:39	3372	0.0	8.55	2.0		
01/23/2011	08:42:09	3208	0.0	8.55	2.0		
01/23/2011	08:42:39	20	0.0	8.55	2.0		
01/23/2011	08:43:09	49	1.8	8.55	2.5		
01/23/2011	08:43:19					Start Pumping Spacer	
01/23/2011	08:43:19	45	1.8	8.55	2.8		
01/23/2011	08:43:20					20bbls Fresh H2o	
01/23/2011	08:43:20	49	1.8	8.55	2.8		
01/23/2011	08:43:39	45	1.8	8.55	3.4		
01/23/2011	08:44:09	77	2.2	8.56	4.2		
01/23/2011	08:44:39	90	2.2	8.55	5.3		
01/23/2011	08:45:09	90	2.2	8.55	6.4		
01/23/2011	08:45:39	83	3.3	8.55	7.9		
01/23/2011	08:46:09	83	3.3	8.55	9.5		
01/23/2011	08:46:39	79	3.3	8.55	11.2		
01/23/2011	08:47:09	113	5.1	8.54	13.3		
01/23/2011	08:47:39	111	5.1	8.54	15.8		
01/23/2011	08:48:09	110	5.1	8.54	18.4		
01/23/2011	08:48:39	78	2.5	9.84	20.3		
01/23/2011	08:49:09	130	4.5	12.57	22.2		
01/23/2011	08:49:29					Start Mixing Lead Slurry	
01/23/2011	08:49:29					85bbls @ 12.5ppg	
01/23/2011	08:49:29	126	4.3	12.56	23.6		
01/23/2011	08:49:30					Good Returns	
01/23/2011	08:49:30					Take Wet&Dry Sample	
01/23/2011	08:49:30					Sample= 12.5ppg	
01/23/2011	08:49:30	128	4.5	12.56	23.7		
01/23/2011	08:49:39	132	4.4	12.55	24.4		
01/23/2011	08:50:09	200	6.4	12.58	27.2		
01/23/2011	08:50:39	202	6.4	12.58	30.4		
01/23/2011	08:51:09	184	6.2	12.59	33.5		
01/23/2011	08:51:39	163	6.2	12.58	36.7		
01/23/2011	08:52:09	163	6.4	12.60	39.9		
01/23/2011	08:52:39	157	6.4	12.62	43.0		
01/23/2011	08:53:09	159	6.4	12.63	46.2		
01/23/2011	08:53:39	152	6.2	12.62	49.3		
01/23/2011	08:54:09	140	6.2	12.63	52.5		
01/23/2011	08:54:39	136	6.4	12.63	55.6		
01/23/2011	08:55:09	132	6.4	12.63	58.8		
01/23/2011	08:55:39	128	6.4	12.61	62.0		
01/23/2011	08:56:09	127	6.4	12.62	65.1		
01/23/2011	08:56:39	126	6.4	12.61	68.3		
01/23/2011	08:57:09	124	6.2	12.63	71.4		
01/23/2011	08:57:39	125	6.4	12.63	74.6		
01/23/2011	08:58:09	126	6.4	12.62	77.8		
01/23/2011	08:58:39	128	6.4	12.62	80.9		
01/23/2011	08:59:09	129	6.4	12.62	84.1		
01/23/2011	08:59:39	129	6.4	12.62	87.2		
01/23/2011	09:00:09	130	6.2	12.62	90.4		
01/23/2011	09:00:37					End Lead Slurry	

Well			Field		Job Start	Customer	Job Number
MF03C-16			N PARACHUTE		Jan/23/2011	ENCANA	BAD4-00286
Date	Time 24-hr clock	Treating Pressure PSI	Flow Rate B/M	Density LB/G	Volume BBL	Message	
01/23/2011	09:00:37	126	6.4	12.63	93.3		
01/23/2011	09:00:39	133	6.2	12.63	93.5		
01/23/2011	09:01:09	126	6.4	12.63	96.7		
01/23/2011	09:01:39	130	6.4	12.73	99.9		
01/23/2011	09:02:09	130	6.4	12.78	103.0		
01/23/2011	09:02:39	127	6.4	12.66	106.2		
01/23/2011	09:02:59					Reset Total, Vol = 108.27 bbl	
01/23/2011	09:02:59	128	6.2	12.68	108.3		
01/23/2011	09:03:07					Start Mixing Scav Slurry	
01/23/2011	09:03:07	127	6.4	12.76	109.1		
01/23/2011	09:03:08					12.5ppg To 14ppg	
01/23/2011	09:03:08	127	6.4	12.78	109.2		
01/23/2011	09:03:09	127	6.2	12.78	109.3		
01/23/2011	09:03:39	142	6.5	13.19	112.5		
01/23/2011	09:04:09	141	6.4	13.64	115.6		
01/23/2011	09:04:27					Start Mixing Tail Slurry	
01/23/2011	09:04:27	144	6.4	13.88	117.5		
01/23/2011	09:04:28					80bbls Cemnet	
01/23/2011	09:04:28					Mixed Between	
01/23/2011	09:04:28					Lead And Tail	
01/23/2011	09:04:28	149	6.4	13.88	117.6		
01/23/2011	09:04:29					38bbls @ 14ppg	
01/23/2011	09:04:29					Take Wet&Dry Sample	
01/23/2011	09:04:29					Sample= 14ppg	
01/23/2011	09:04:29	149	6.2	13.90	117.7		
01/23/2011	09:04:39	148	6.4	14.03	118.8		
01/23/2011	09:05:09	154	6.4	14.20	122.0		
01/23/2011	09:05:39	149	6.2	14.03	125.1		
01/23/2011	09:06:09	62	4.4	14.07	127.7		
01/23/2011	09:06:39	73	4.5	14.15	129.9		
01/23/2011	09:07:09	76	4.4	14.21	132.2		
01/23/2011	09:07:39	80	4.5	14.26	134.4		
01/23/2011	09:07:47					Good Returns	
01/23/2011	09:07:47	78	4.3	14.25	135.0		
01/23/2011	09:08:09	86	4.5	14.25	136.6		
01/23/2011	09:08:39	94	4.5	14.24	138.8		
01/23/2011	09:09:09	88	4.4	14.22	141.1		
01/23/2011	09:09:39	80	4.4	14.19	143.3		
01/23/2011	09:10:09	70	4.5	14.21	145.5		
01/23/2011	09:10:39	82	4.3	14.11	147.7		
01/23/2011	09:11:09	74	4.4	14.09	149.9		
01/23/2011	09:11:39	71	4.3	14.09	152.2		
01/23/2011	09:12:09	-21	1.5	14.47	154.2		
01/23/2011	09:12:39	-22	0.0	14.21	154.2		
01/23/2011	09:13:09	-21	0.0	14.19	154.2		
01/23/2011	09:13:39	-21	0.0	14.19	154.2		
01/23/2011	09:14:09	-20	0.0	14.19	154.2		
01/23/2011	09:14:39	-18	0.0	14.19	154.2		
01/23/2011	09:15:09	-18	0.0	14.18	154.2		
01/23/2011	09:15:39	-5	1.5	9.55	154.5		
01/23/2011	09:16:09	55	4.4	9.23	156.1		
01/23/2011	09:16:39	46	4.4	9.05	158.3		
01/23/2011	09:17:09	87	6.4	8.91	161.1		
01/23/2011	09:17:36					End Tail Slurry	
01/23/2011	09:17:36	83	6.4	8.81	164.0		

Well			Field		Job Start	Customer	Job Number
MF03C-16			N PARACHUTE		Jan/23/2011	ENCANA	BAD4-00286
Date	Time 24-hr clock	Treating Pressure PSI	Flow Rate B/M	Density LB/G	Volume BBL	Message	
01/23/2011	09:17:39	78	6.2	8.80	164.3		
01/23/2011	09:17:42					Drop Top Plug	
01/23/2011	09:17:42	83	6.2	8.79	164.6		
01/23/2011	09:17:43					Wash Up	
01/23/2011	09:17:43					Down Hole	
01/23/2011	09:17:43	78	6.2	8.78	164.7		
01/23/2011	09:17:44					Start Displacement	
01/23/2011	09:17:44	82	6.2	8.78	164.8		
01/23/2011	09:17:45					121bbbls Fresh H2o	
01/23/2011	09:17:45					Good Returns	
01/23/2011	09:17:45	82	6.2	8.77	164.9		
01/23/2011	09:18:09	77	6.4	8.72	167.5		
01/23/2011	09:18:39	69	6.4	8.70	170.6		
01/23/2011	09:19:09	72	6.4	8.63	173.8		
01/23/2011	09:19:39	76	6.4	8.64	176.9		
01/23/2011	09:20:09	76	6.2	8.60	180.1		
01/23/2011	09:20:39	63	6.2	8.53	183.3		
01/23/2011	09:21:09	64	6.4	8.54	186.4		
01/23/2011	09:21:39	65	6.4	8.54	189.6		
01/23/2011	09:22:09	68	6.4	8.54	192.7		
01/23/2011	09:22:39	100	6.2	8.54	195.9		
01/23/2011	09:23:09	127	6.4	8.54	199.0		
01/23/2011	09:23:39	159	6.4	8.54	202.2		
01/23/2011	09:24:09	173	6.2	8.54	205.3		
01/23/2011	09:24:39	198	6.2	8.54	208.5		
01/23/2011	09:25:09	215	6.5	8.54	211.7		
01/23/2011	09:25:39	192	6.5	8.53	215.0		
01/23/2011	09:26:09	238	6.5	8.54	218.2		
01/23/2011	09:26:39	243	6.5	8.53	221.5		
01/23/2011	09:27:09	287	6.5	8.54	224.7		
01/23/2011	09:27:39	297	6.5	8.54	228.0		
01/23/2011	09:28:09	319	6.5	8.54	231.2		
01/23/2011	09:28:39	326	6.5	8.54	234.4		
01/23/2011	09:29:09	348	6.5	8.54	237.7		
01/23/2011	09:29:39	340	6.5	8.54	240.9		
01/23/2011	09:30:09	369	6.5	8.54	244.1		
01/23/2011	09:30:39	360	6.5	8.54	247.4		
01/23/2011	09:31:09	402	6.5	8.54	250.6		
01/23/2011	09:31:17					30bbbls Cement	
01/23/2011	09:31:17					To Surface	
01/23/2011	09:31:17	374	6.5	8.54	251.5		
01/23/2011	09:31:39	401	6.5	8.54	253.8		
01/23/2011	09:32:09	347	4.6	8.54	257.0		
01/23/2011	09:32:39	344	4.6	8.54	259.3		
01/23/2011	09:33:09	375	4.6	8.53	261.5		
01/23/2011	09:33:39	384	4.6	8.54	263.8		
01/23/2011	09:34:09	389	4.6	8.54	266.1		
01/23/2011	09:34:39	354	2.3	8.54	267.7		
01/23/2011	09:35:09	341	2.3	8.53	268.8		
01/23/2011	09:35:39	368	2.3	8.53	269.9		
01/23/2011	09:36:09	391	2.3	8.53	271.1		
01/23/2011	09:36:39	373	2.3	8.53	272.2		
01/23/2011	09:37:09	399	2.3	8.53	273.3		
01/23/2011	09:37:39	381	2.3	8.53	274.5		
01/23/2011	09:38:09	401	2.3	8.54	275.6		

Well			Field		Job Start	Customer	Job Number
MF03C-16			N PARACHUTE		Jan/23/2011	ENCANA	BAD4-00286
Date	Time 24-hr clock	Treating Pressure PSI	Flow Rate B/M	Density LB/G	Volume BBL	Message	
01/23/2011	09:38:39	1078	0.0	8.54	276.4		
01/23/2011	09:39:09	1420	0.9	8.54	276.5		
01/23/2011	09:39:39	1418	0.0	8.54	276.6		
01/23/2011	09:39:58					Bump Top Plug	
01/23/2011	09:39:58	1415	0.0	8.54	276.6		
01/23/2011	09:39:59					Bump To 1400psi	
01/23/2011	09:39:59	1415	0.0	8.54	276.6		
01/23/2011	09:40:09	1413	0.0	8.54	276.6		
01/23/2011	09:40:39	1411	0.0	8.54	276.6		
01/23/2011	09:41:09	1409	0.0	8.54	276.6		
01/23/2011	09:41:39	1407	0.0	8.54	276.6		
01/23/2011	09:42:09	1407	0.0	8.54	276.6		
01/23/2011	09:42:39	1405	0.0	8.54	276.6		
01/23/2011	09:43:09	1404	0.0	8.54	276.6		
01/23/2011	09:43:39	1403	0.0	8.54	276.6		
01/23/2011	09:44:09	1402	0.0	8.54	276.6		
01/23/2011	09:44:39	1400	0.0	8.54	276.6		
01/23/2011	09:45:09	1399	0.0	8.54	276.6		
01/23/2011	09:45:39	1398	0.0	8.54	276.6		
01/23/2011	09:46:09	1396	0.0	8.54	276.6		
01/23/2011	09:46:39	1395	0.0	8.54	276.6		
01/23/2011	09:47:09	1392	0.0	8.54	276.6		
01/23/2011	09:47:39	1390	0.0	8.54	276.6		
01/23/2011	09:48:09	1390	0.0	8.54	276.6		
01/23/2011	09:48:39	1311	0.0	8.54	276.6		
01/23/2011	09:49:09	439	0.0	8.54	276.6		
01/23/2011	09:49:39	-15	0.0	8.54	276.6		
01/23/2011	09:50:09	-16	0.0	8.54	276.6		
01/23/2011	09:50:39	-16	0.0	8.54	276.6		
01/23/2011	09:50:40					Floats Held	
01/23/2011	09:50:40	-16	0.0	8.54	276.6		
01/23/2011	09:50:58					End Job	
01/23/2011	09:50:58	-17	0.0	8.54	276.6		
01/23/2011	09:51:09	-18	0.0	8.54	276.6		
01/23/2011	09:51:39	-17	0.0	8.54	276.6		
01/23/2011	09:52:09	-17	0.0	8.54	276.6		
01/23/2011	09:52:39	-7	0.0	8.54	276.6		
01/23/2011	09:53:09	155	0.0	8.54	276.6		
01/23/2011	09:53:39	173	0.0	8.54	276.7		
01/23/2011	09:54:09	63	5.5	8.54	278.5		
01/23/2011	09:54:39	157	5.2	8.54	280.4		
01/23/2011	09:55:09	164	5.2	8.54	283.0		
01/23/2011	09:55:39	-7	0.1	8.55	285.0		
01/23/2011	09:56:09	-14	0.0	8.55	285.0		

Well MF03C-16	Field N PARACHUTE	Job Start Jan/23/2011	Customer ENCANA	Job Number BAD4-00286
-------------------------	-----------------------------	---------------------------------	---------------------------	---------------------------------

Post Job Summary

Average Pump Rates, bbl/min					Volume of Fluid Injected, bbl			
Slurry 4.8	N2	Mud 0.0	Maximum Rate 6.5	Total Slurry 282.2	Mud 0.0	Spacer 23.6	N2	
Treating Pressure Summary, psi					Breakdown Fluid			
Maximum 4013	Final 155	Average 437	Bump Plug to 1400	Breakdown	Type	Volume	Density	
Avg. N2 Percent		Designed Slurry Volume 123.0 bbl	Displacement 112.0 bbl	Mix Water Temp 90 degF	Cement Circulated to Surface? <input checked="" type="checkbox"/>	Volume 30.0 bbl		
			Washed Thru Perfs <input type="checkbox"/>			To		
Customer or Authorized Representative ED ASUCHAK			Schlumberger Supervisor JASON CRICK			Circulation Lost <input type="checkbox"/>		
						Job Completed <input checked="" type="checkbox"/>		
						-		