



ANTERO RESOURCES

Location: COLORADO Slot: ALT SLOT A4
Field: GARFIELD COUNTY Well: Dever A4 ALT SHL
Facility: SEC.18-T6S-R92W Wellbore: Dever A4 ALT SHL PWB

Targets

Name	MD (ft)	TVD (ft)	Local N (ft)	Local E (ft)	Grid East (USft)	Grid North (USft)	Latitude	Longitude
Denver Alt A4 Target Radius: 60' Center @ BHL 842' FSL & 1725' FWL	5767.00		-154.27	67.51	2376922.76	1622467.35	39° 31' 17.962"N	107° 42' 32.209"W

Well Profile Data

Design Comment	MD (ft)	Inc (")	Az (")	TVD (ft)	Local N (ft)	Local E (ft)	DLS (°/100ft)	VS (ft)
Tie On	14.00	0.000	250.000	14.00	0.00	0.00	0.00	0.00
End of Tangent	200.00	0.000	250.000	200.00	0.00	0.00	0.00	0.00
End of Build	300.00	2.000	250.000	299.98	-0.60	-1.64	2.00	1.20
3D Arc (S)	592.79	7.000	201.898	591.84	-18.91	-13.10	2.00	22.58
End of Tangent (S)	1614.57	7.000	201.898	1606.00	-134.45	-59.55	0.00	147.05
Drop (S)	1964.57	0.000	201.898	1955.13	-154.27	-67.51	2.00	168.39
End of Tangent	8571.43	0.000	201.898	8562.00	-154.27	-67.51	0.00	168.39

Plot reference wellpath is Dever A4 ALT SHL PWB

True vertical depths are referenced to Rig on ALT SLOT A4 (RT) Grid System: NAD83 / Lambert Colorado State Planes, Central Zone (502), US feet

Measured depths are referenced to Rig on ALT SLOT A4 (RT) North Reference: Grid north

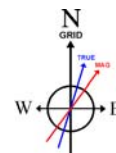
Rig on ALT SLOT A4 (RT) to Mean Sea Level: 5582 feet Scale: True distance

Mean Sea Level to Mud line (Facility - SEC.18-T6S-R92W): 0 feet Depths are in feet

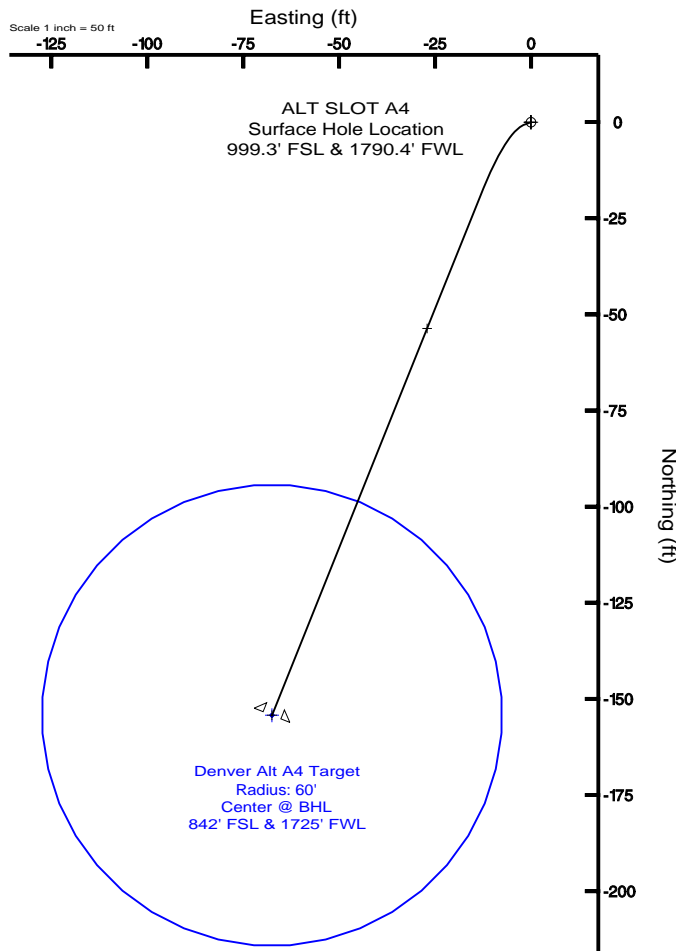
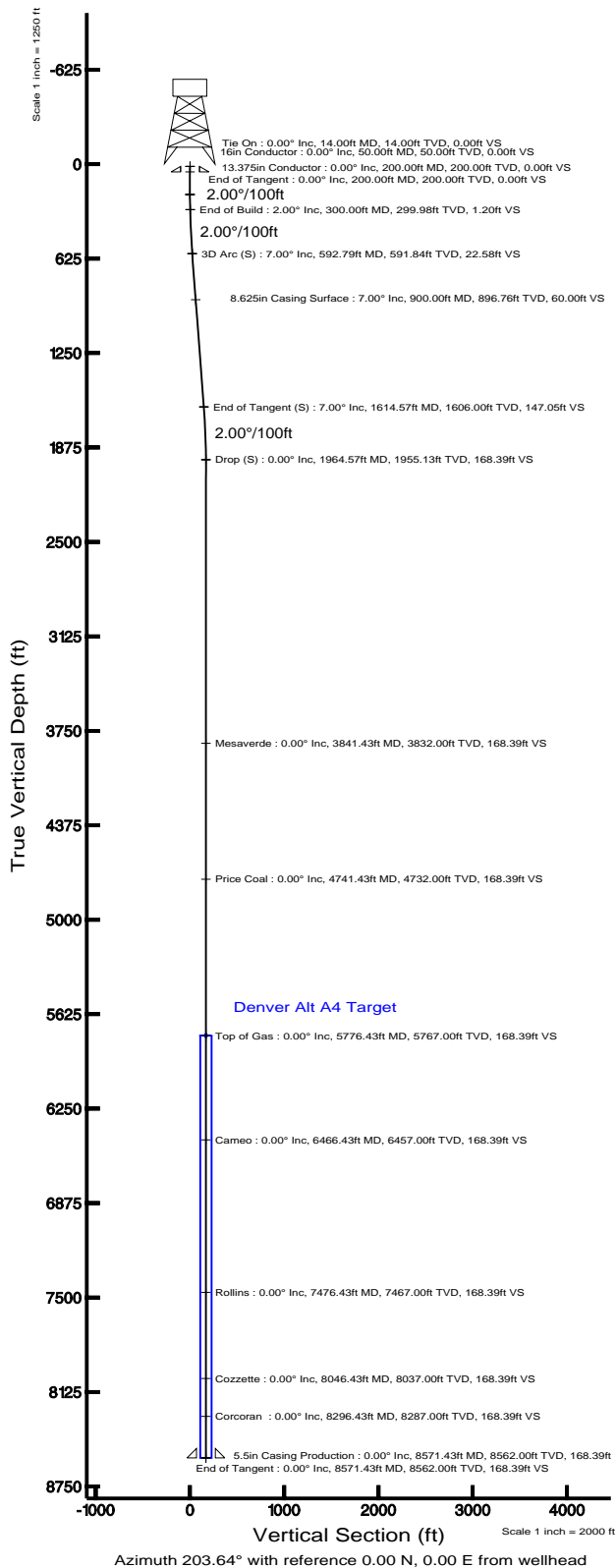
Coordinates are in feet referenced to Slot Created by: willeria on 1/5/2007

Location Information

Facility Name	Grid East (USft)	Grid North (USft)	Latitude	Longitude
SEC.18-T6S-R92W	2376989.823	1622591.744	39° 31' 19.207"N	107° 42' 31.392"W
Slot	Local N (ft)	Local E (ft)	Grid East (USft)	Grid North (USft)
ALT SLOT A4	29.87	0.44	2376990.267	1622621.609
Rig on ALT SLOT A4 (RT) to Mud line (Facility - SEC.18-T6S-R92W)				5582ft
Mean Sea Level to Mud line (Facility - SEC.18-T6S-R92W)				0ft
Rig on ALT SLOT A4 (RT) to Mean Sea Level				5582ft



BGGM (1945.0 to 2008.0) Dip: 65.98° Field: 52819.3 nT
Magnetic North is 10.84 degrees East of True North (at 11/17/06)
Grid North is 1.39 degrees West of True North
To correct azimuth from True to Grid add 1.39 degrees
To correct azimuth from Magnetic to Grid add 12.24 degrees





Planned Wellpath Report

Dever A4 ALT SHL PWP

Page 1 of 5



REFERENCE WELLPATH IDENTIFICATION

Operator	ANTERO RESOURCES	Slot	ALT SLOT A4
Area	COLORADO	Well	Dever A4 ALT SHL
Field	GARFIELD COUNTY	Wellbore	Dever A4 ALT SHL PWB
Facility	SEC.18-T6S-R92W		

REPORT SETUP INFORMATION

Projection System	NAD83 / Lambert Colorado State Planes, Central Zone (502), US feet	Software System	WellArchitect™ 1.2
North Reference	Grid	User	Willeria
Scale	0.999963	Report Generated	01/05/07 at 13:56:05
Wellbore last revised	11/17/06	Database/Source file	WA_Denver/Dever_A4

WELLPATH LOCATION

	Local coordinates		Grid coordinates		Geographic coordinates	
	North [feet]	East [feet]	Easting [US feet]	Northing [US feet]	Latitude [°]	Longitude [°]
Slot Location	29.87	0.44	2376990.27	1622621.61	39 31 19.502N	107 42 31.396W
Facility Reference Pt			2376989.82	1622591.74	39 31 19.207N	107 42 31.392W
Field Reference Pt			2372614.66	1630408.35	39 32 35.384N	107 43 29.652W

WELLPATH DATUM

Calculation method	Minimum curvature	Rig on ALT SLOT A4 (RT) to Facility Vertical Datum	5582.00 feet
Horizontal Reference Pt	Slot	Rig on ALT SLOT A4 (RT) to Mean Sea Level	5582.00 feet
Vertical Reference Pt	Rig on ALT SLOT A4 (RT)	Facility Vertical Datum to Mud Line (Facility)	0.00 feet
MD Reference Pt	Rig on ALT SLOT A4 (RT)	Section Origin	N 0.00, E 0.00 ft
Field Vertical Reference	Mean Sea Level	Section Azimuth	203.64°



Planned Wellpath Report

Dever A4 ALT SHL PWP

Page 2 of 5



REFERENCE WELLPATH IDENTIFICATION

Operator	ANTERO RESOURCES	Slot	ALT SLOT A4
Area	COLORADO	Well	Dever A4 ALT SHL
Field	GARFIELD COUNTY	Wellbore	Dever A4 ALT SHL PWB
Facility	SEC.18-T6S-R92W		

WELLPATH DATA (100 stations) † = interpolated/extrapolated station

MD [feet]	Inclination [°]	Azimuth [°]	TVD [feet]	Vert Sect [feet]	North [feet]	East [feet]	DLS [°/100ft]	Path Comment
0.00†	0.000	250.000	0.00	0.00	0.00	0.00	0.00	
14.00	0.000	250.000	14.00	0.00	0.00	0.00	0.00	
114.00†	0.000	0.000	114.00	0.00	0.00	0.00	0.00	
200.00	0.000	250.000	200.00	0.00	0.00	0.00	0.00	
214.00†	0.280	250.000	214.00	0.02	-0.01	-0.03	2.00	
300.00	2.000	250.000	299.98	1.20	-0.60	-1.64	2.00	
314.00†	2.143	243.326	313.97	1.57	-0.80	-2.10	2.00	
414.00†	3.657	216.316	413.84	6.12	-4.21	-5.66	2.00	
514.00†	5.491	206.095	513.52	14.02	-11.07	-9.66	2.00	
592.79	7.000	201.898	591.84	22.58	-18.91	-13.10	2.00	
614.00†	7.000	201.898	612.90	25.17	-21.31	-14.07	0.00	
714.00†	7.000	201.898	712.15	37.35	-32.62	-18.61	0.00	
814.00†	7.000	201.898	811.40	49.53	-43.93	-23.16	0.00	
914.00†	7.000	201.898	910.66	61.71	-55.24	-27.70	0.00	
1014.00†	7.000	201.898	1009.91	73.89	-66.54	-32.25	0.00	
1114.00†	7.000	201.898	1109.17	86.07	-77.85	-36.80	0.00	
1214.00†	7.000	201.898	1208.42	98.25	-89.16	-41.34	0.00	
1314.00†	7.000	201.898	1307.68	110.43	-100.47	-45.89	0.00	
1414.00†	7.000	201.898	1406.93	122.62	-111.77	-50.43	0.00	
1514.00†	7.000	201.898	1506.19	134.80	-123.08	-54.98	0.00	
1614.00†	7.000	201.898	1605.44	146.98	-134.39	-59.52	0.00	
1614.57	7.000	201.898	1606.00	147.05	-134.45	-59.55	0.00	
1714.00†	5.011	201.898	1704.89	157.45	-144.10	-63.43	2.00	
1814.00†	3.011	201.898	1804.64	164.44	-150.60	-66.04	2.00	
1914.00†	1.011	201.898	1904.57	167.95	-153.85	-67.34	2.00	
1964.57	0.000	201.898	1955.13 ¹	168.39	-154.27	-67.51	2.00	
2014.00†	0.000	0.000	2004.57	168.39	-154.27	-67.51	0.00	
2114.00†	0.000	0.000	2104.57	168.39	-154.27	-67.51	0.00	
2214.00†	0.000	0.000	2204.57	168.39	-154.27	-67.51	0.00	
2314.00†	0.000	0.000	2304.57	168.39	-154.27	-67.51	0.00	
2414.00†	0.000	0.000	2404.57	168.39	-154.27	-67.51	0.00	
2514.00†	0.000	0.000	2504.57	168.39	-154.27	-67.51	0.00	
2614.00†	0.000	0.000	2604.57	168.39	-154.27	-67.51	0.00	
2714.00†	0.000	0.000	2704.57	168.39	-154.27	-67.51	0.00	
2814.00†	0.000	0.000	2804.57	168.39	-154.27	-67.51	0.00	
2914.00†	0.000	0.000	2904.57	168.39	-154.27	-67.51	0.00	
3014.00†	0.000	0.000	3004.57	168.39	-154.27	-67.51	0.00	
3114.00†	0.000	0.000	3104.57	168.39	-154.27	-67.51	0.00	
3214.00†	0.000	0.000	3204.57	168.39	-154.27	-67.51	0.00	
3314.00†	0.000	0.000	3304.57	168.39	-154.27	-67.51	0.00	



Planned Wellpath Report

Dever A4 ALT SHL PWP

Page 3 of 5



REFERENCE WELLPATH IDENTIFICATION

Operator	ANTERO RESOURCES	Slot	ALT SLOT A4
Area	COLORADO	Well	Dever A4 ALT SHL
Field	GARFIELD COUNTY	Wellbore	Dever A4 ALT SHL PWB
Facility	SEC.18-T6S-R92W		

WELLPATH DATA (100 stations) † = interpolated/extrapolated station

MD [feet]	Inclination [°]	Azimuth [°]	TVD [feet]	Vert Sect [feet]	North [feet]	East [feet]	DLS [°/100ft]	Path Comment
3414.00†	0.000	0.000	3404.57	168.39	-154.27	-67.51	0.00	
3514.00†	0.000	0.000	3504.57	168.39	-154.27	-67.51	0.00	
3614.00†	0.000	0.000	3604.57	168.39	-154.27	-67.51	0.00	
3714.00†	0.000	0.000	3704.57	168.39	-154.27	-67.51	0.00	
3741.43†	0.000	201.898	3732.00	168.39	-154.27	-67.51	0.00	Price Coal
3814.00†	0.000	0.000	3804.57	168.39	-154.27	-67.51	0.00	
3841.43†	0.000	201.898	3832.00	168.39	-154.27	-67.51	0.00	Mesaverde
3914.00†	0.000	0.000	3904.57	168.39	-154.27	-67.51	0.00	
4014.00†	0.000	0.000	4004.57	168.39	-154.27	-67.51	0.00	
4114.00†	0.000	0.000	4104.57	168.39	-154.27	-67.51	0.00	
4214.00†	0.000	0.000	4204.57	168.39	-154.27	-67.51	0.00	
4314.00†	0.000	0.000	4304.57	168.39	-154.27	-67.51	0.00	
4414.00†	0.000	0.000	4404.57	168.39	-154.27	-67.51	0.00	
4514.00†	0.000	0.000	4504.57	168.39	-154.27	-67.51	0.00	
4614.00†	0.000	0.000	4604.57	168.39	-154.27	-67.51	0.00	
4714.00†	0.000	0.000	4704.57	168.39	-154.27	-67.51	0.00	
4814.00†	0.000	0.000	4804.57	168.39	-154.27	-67.51	0.00	
4914.00†	0.000	0.000	4904.57	168.39	-154.27	-67.51	0.00	
5014.00†	0.000	0.000	5004.57	168.39	-154.27	-67.51	0.00	
5114.00†	0.000	0.000	5104.57	168.39	-154.27	-67.51	0.00	
5214.00†	0.000	0.000	5204.57	168.39	-154.27	-67.51	0.00	
5314.00†	0.000	0.000	5304.57	168.39	-154.27	-67.51	0.00	
5414.00†	0.000	0.000	5404.57	168.39	-154.27	-67.51	0.00	
5514.00†	0.000	0.000	5504.57	168.39	-154.27	-67.51	0.00	
5614.00†	0.000	0.000	5604.57	168.39	-154.27	-67.51	0.00	
5714.00†	0.000	0.000	5704.57	168.39	-154.27	-67.51	0.00	
5776.43†	0.000	201.898	5767.00	168.39	-154.27	-67.51	0.00	Top of Gas
5814.00†	0.000	0.000	5804.57	168.39	-154.27	-67.51	0.00	
5914.00†	0.000	0.000	5904.57	168.39	-154.27	-67.51	0.00	
6014.00†	0.000	0.000	6004.57	168.39	-154.27	-67.51	0.00	
6114.00†	0.000	0.000	6104.57	168.39	-154.27	-67.51	0.00	
6214.00†	0.000	0.000	6204.57	168.39	-154.27	-67.51	0.00	
6314.00†	0.000	0.000	6304.57	168.39	-154.27	-67.51	0.00	
6414.00†	0.000	0.000	6404.57	168.39	-154.27	-67.51	0.00	
6466.43†	0.000	201.898	6457.00	168.39	-154.27	-67.51	0.00	Cameo
6514.00†	0.000	0.000	6504.57	168.39	-154.27	-67.51	0.00	
6614.00†	0.000	0.000	6604.57	168.39	-154.27	-67.51	0.00	
6714.00†	0.000	0.000	6704.57	168.39	-154.27	-67.51	0.00	
6814.00†	0.000	0.000	6804.57	168.39	-154.27	-67.51	0.00	
6914.00†	0.000	0.000	6904.57	168.39	-154.27	-67.51	0.00	



Planned Wellpath Report

Dever A4 ALT SHL PWP

Page 4 of 5



REFERENCE WELLPATH IDENTIFICATION

Operator	ANTERO RESOURCES	Slot	ALT SLOT A4
Area	COLORADO	Well	Dever A4 ALT SHL
Field	GARFIELD COUNTY	Wellbore	Dever A4 ALT SHL PWB
Facility	SEC.18-T6S-R92W		

WELLPATH DATA (100 stations) † = interpolated/extrapolated station

MD [feet]	Inclination [°]	Azimuth [°]	TVD [feet]	Vert Sect [feet]	North [feet]	East [feet]	DLS [°/100ft]	Path Comment
7014.00†	0.000	0.000	7004.57	168.39	-154.27	-67.51	0.00	
7114.00†	0.000	0.000	7104.57	168.39	-154.27	-67.51	0.00	
7214.00†	0.000	0.000	7204.57	168.39	-154.27	-67.51	0.00	
7314.00†	0.000	0.000	7304.57	168.39	-154.27	-67.51	0.00	
7414.00†	0.000	0.000	7404.57	168.39	-154.27	-67.51	0.00	
7476.43†	0.000	201.898	7467.00	168.39	-154.27	-67.51	0.00	Rollins
7514.00†	0.000	0.000	7504.57	168.39	-154.27	-67.51	0.00	
7614.00†	0.000	0.000	7604.57	168.39	-154.27	-67.51	0.00	
7714.00†	0.000	0.000	7704.57	168.39	-154.27	-67.51	0.00	
7814.00†	0.000	0.000	7804.57	168.39	-154.27	-67.51	0.00	
7914.00†	0.000	0.000	7904.57	168.39	-154.27	-67.51	0.00	
8014.00†	0.000	0.000	8004.57	168.39	-154.27	-67.51	0.00	
8046.43†	0.000	201.898	8037.00	168.39	-154.27	-67.51	0.00	Cozzette
8114.00†	0.000	0.000	8104.57	168.39	-154.27	-67.51	0.00	
8214.00†	0.000	0.000	8204.57	168.39	-154.27	-67.51	0.00	
8296.43†	0.000	201.898	8287.00	168.39	-154.27	-67.51	0.00	Corcoran
8314.00†	0.000	0.000	8304.57	168.39	-154.27	-67.51	0.00	
8414.00†	0.000	0.000	8404.57	168.39	-154.27	-67.51	0.00	
8514.00†	0.000	0.000	8504.57	168.39	-154.27	-67.51	0.00	
8571.43	0.000	201.898	8562.00	168.39	-154.27	-67.51	0.00	

HOLE & CASING SECTIONS Ref Wellbore: Dever A4 ALT SHL PWB Ref Wellpath: Dever A4 ALT SHL PWP

String/Diameter	Start MD [feet]	End MD [feet]	Interval [feet]	Start TVD [feet]	End TVD [feet]	Start N/S [feet]	Start E/W [feet]	End N/S [feet]	End E/W [feet]
24in Open Hole	14.00	50.00	36.00	14.00	50.00	0.00	0.00	0.00	0.00
16in Conductor	14.00	50.00	36.00	14.00	50.00	0.00	0.00	0.00	0.00
14.75in Open Hole	50.00	200.00	150.00	50.00	200.00	0.00	0.00	0.00	0.00
13.375in Conductor	14.00	200.00	186.00	14.00	200.00	0.00	0.00	0.00	0.00
12.25in Open Hole	200.00	900.00	700.00	200.00	896.76	0.00	0.00	-53.65	-27.07
8.625in Casing Surface	14.00	900.00	886.00	14.00	896.76	0.00	0.00	-53.65	-27.07
7.875in Open Hole	900.00	8571.43	7671.43	896.76	8562.00	-53.65	-27.07	-154.27	-67.51
5.5in Casing Production	14.00	8571.43	8557.43	14.00	8562.00	0.00	0.00	-154.27	-67.51



Planned Wellpath Report

Dever A4 ALT SHL PWP

Page 5 of 5



REFERENCE WELLPATH IDENTIFICATION

Operator	ANTERO RESOURCES	Slot	ALT SLOT A4
Area	COLORADO	Well	Dever A4 ALT SHL
Field	GARFIELD COUNTY	Wellbore	Dever A4 ALT SHL PWB
Facility	SEC.18-T6S-R92W		

TARGETS

Name	MD [feet]	TVD [feet]	North [feet]	East [feet]	Grid East [us survey feet]	Grid North [us survey feet]	Latitude [°]	Longitude [°]	Shape
1) Denver Alt A4 Target Radius: 60' Center @ BHL 842' FSL & 1725' FWL		5767.00	-154.27	-67.51	2376922.76	1622467.35	39 31 17.962N	107 42 32.209W	circle

SURVEY PROGRAM Ref Wellbore: Dever A4 ALT SHL PWB Ref Wellpath: Dever A4 ALT SHL PWP

Start MD [feet]	End MD [feet]	Positional Uncertainty Model	Log Name/Comment	Wellbore
14.00	8571.43	MTC (Collar, pre-2000) (Standard)		Dever A4 ALT SHL PWB

WELLPATH COMMENTS

MD [feet]	Inclination [degrees]	Azimuth [degrees]	TVD [feet]	Comment
3741.43	0.000	201.898	3732.00	Price Coal
3841.43	0.000	201.898	3832.00	Mesaverde
5776.43	0.000	201.898	5767.00	Top of Gas
6466.43	0.000	201.898	6457.00	Cameo
7476.43	0.000	201.898	7467.00	Rollins
8046.43	0.000	201.898	8037.00	Cozzette
8296.43	0.000	201.898	8287.00	Corcoran



Clearance Report

Closest Approach
Dever A4 ALT SHL PWP
Page 1 of 3



REFERENCE WELLPATH IDENTIFICATION

Operator	ANTERO RESOURCES	Slot	ALT SLOT A4
Area	COLORADO	Well	Dever A4 ALT SHL
Field	GARFIELD COUNTY	Wellbore	Dever A4 ALT SHL PWB
Facility	SEC.18-T6S-R92W		

REPORT SETUP INFORMATION

Projection System	NAD83 / Lambert Colorado State Planes, Central Zone (502), US feet	Software System	WellArchitect™ 1.2
North Reference	Grid	User	Willeria
Scale	0.999963	Report Generated	1/5/2007 at 1:57:10 PM
Wellbore last revised	11/17/2006	Database/Source file	WA_Denver/Dever_A4

WELLPATH LOCATION

	Local coordinates		Grid coordinates		Geographic coordinates	
	North [feet]	East [feet]	Easting [US feet]	Northing [US feet]	Latitude [°]	Longitude [°]
Slot Location	29.87	0.44	2376990.27	1622621.61	39 31 19.502N	107 42 31.396W
Facility Reference Pt			2376989.82	1622591.74	39 31 19.207N	107 42 31.392W
Field Reference Pt			2372614.66	1630408.35	39 32 35.384N	107 43 29.652W

WELLPATH DATUM

Calculation method	Minimum Curvature	Rig on ALT SLOT A4 (RT) to Facility Vertical Datum	5582.00 feet
Horizontal Reference Pt	Slot	Rig on ALT SLOT A4 (RT) to Mean Sea Level	5582.00 feet
Vertical Reference Pt	Rig on ALT SLOT A4 (RT)	Facility Vertical Datum to Mud Line (Facility)	0.00 feet
MD Reference Pt	Rig on ALT SLOT A4 (RT)		
Field Vertical Reference	Mean Sea Level		

POSITIONAL UNCERTAINTY CALCULATION SETTINGS

Ellipse Confidence Limit	3.00 Std Dev	Ellipse Start Depth	0.00 feet	Surface Position Uncertainty	included
Declination	10.84° East of TN	Dip Angle	65.98°	Magnetic Field Strength	52819 nT

ANTI-COLLISION RULE

Rule Name	E-type Closest Approach w/Hole&Csg Limit:0 StdDev:3.00 w/Surface Uncert	Rule Based On	Ellipsoid Separation
Plane of Rule	Closest Approach	Threshold Value	0.00 feet
Subtract Casing & Hole Size	yes	Apply Cone of Safety	no



Clearance Report

Closest Approach
Dever A4 ALT SHL PWP
Page 2 of 3



REFERENCE WELLPATH IDENTIFICATION

Operator	ANTERO RESOURCES	Slot	ALT SLOT A4
Area	COLORADO	Well	Dever A4 ALT SHL
Field	GARFIELD COUNTY	Wellbore	Dever A4 ALT SHL PWB
Facility	SEC.18-T6S-R92W		

HOLE & CASING SECTIONS Ref Wellbore: Dever A4 ALT SHL PWB Ref Wellpath: Dever A4 ALT SHL PWP

String/Diameter	Start MD [feet]	End MD [feet]	Interval [feet]	Start TVD [feet]	End TVD [feet]	Start N/S [feet]	Start E/W [feet]	End N/S [feet]	End E/W [feet]
24in Open Hole	14.00	50.00	36.00	14.00	50.00	0.00	0.00	0.00	0.00
16in Conductor	14.00	50.00	36.00	14.00	50.00	0.00	0.00	0.00	0.00
14.75in Open Hole	50.00	200.00	150.00	50.00	200.00	0.00	0.00	0.00	0.00
13.375in Conductor	14.00	200.00	186.00	14.00	200.00	0.00	0.00	0.00	0.00
12.25in Open Hole	200.00	900.00	700.00	200.00	896.76	0.00	0.00	-53.65	-27.07
8.625in Casing Surface	14.00	900.00	886.00	14.00	896.76	0.00	0.00	-53.65	-27.07
7.875in Open Hole	900.00	8571.43	7671.43	896.76	8562.00	-53.65	-27.07	-154.27	-67.51
5.5in Casing Production	14.00	8571.43	8557.43	14.00	8562.00	0.00	0.00	-154.27	-67.51

SURVEY PROGRAM Ref Wellbore: Dever A4 ALT SHL PWB Ref Wellpath: Dever A4 ALT SHL PWP

Start MD [feet]	End MD [feet]	Positional Uncertainty Model	Log Name/Comment	Wellbore
14.00	8571.43	MTC (Collar, pre-2000) (Standard)		Dever A4 ALT SHL PWB

CALCULATION RANGE & CUTOFF

From: 14.00 MD	To: 8571.43 MD	C-C Cutoff: 200.00 feet
----------------	----------------	-------------------------

OFFSET WELL CLEARANCE SUMMARY (1 Offset Wellpath selected)

Offset Facility	Offset Slot	Offset Well	Offset Wellbore	Offset Wellpath	Ref MD [feet]	Min C-C Clear Dist [feet]	Diverging from MD [feet]	Ref MD of Min C-C Ell Sep [feet]	Min C-C Ell Sep [feet]	Min C-C Ell Sep Dvrg from [feet]	ACR Status
SEC.18-T6S-R92W	Slot #3 Dever A2	Dever A2	Dever A2 AWB	Dever A2 AWP	14.00	9.83	14.00	15.13	-3.53	15.13	FAIL



Clearance Report

Closest Approach
Dever A4 ALT SHL PWP
Page 3 of 3



REFERENCE WELLPATH IDENTIFICATION

Operator	ANTERO RESOURCES	Slot	ALT SLOT A4
Area	COLORADO	Well	Dever A4 ALT SHL
Field	GARFIELD COUNTY	Wellbore	Dever A4 ALT SHL PWB
Facility	SEC.18-T6S-R92W		

CLEARANCE DATA - Offset Wellbore: Dever A2 AWB

Offset Wellpath: Dever A2 AWP

Facility: SEC.18-T6S-R92W Slot: Slot #3 Dever A2 Well: Dever A2 Threshold Value=0.00 feet

† = interpolated/extrapolated station

Ref MD [feet]	Ref TVD [feet]	Ref North [feet]	Ref East [feet]	Offset MD [feet]	Offset TVD [feet]	Offset North [feet]	Offset East [feet]	Angle from Highside [°]	C-C Clear Dist [feet]	Ellipse Sep [feet]	ACR MASD [feet]	ACR Status
14.00	14.00	0.00	0.00	19.00	14.00	-9.83	-0.24	-68.61	9.83	-2.89	12.72	FAIL
15.13†	15.13	0.00	0.00	20.13	15.13	-9.83	-0.24	-68.61	9.83	-3.53	13.36	FAIL
114.00†	114.00	0.00	0.00	118.93	113.93	-10.17	-0.13	-69.25	10.17	-2.81	12.98	FAIL
200.00	200.00	0.00	0.00	204.91	199.91	-10.82	-0.12	-69.34	10.82	-2.21	13.03	FAIL
214.00†	214.00	-0.01	-0.03	218.86	213.86	-10.97	-0.14	-69.46	10.96	-1.98	12.94	FAIL
300.00	299.98	-0.60	-1.64	304.47	299.43	-13.26	0.43	-79.18	12.85	-0.21	13.05	FAIL
314.00†	313.97	-0.80	-2.10	318.38	313.32	-13.86	0.67	-75.22	13.37	0.28	13.09	PASS
414.00†	413.84	-4.21	-5.66	417.52	412.21	-19.81	4.29	-68.60	18.58	5.04	13.54	PASS
514.00†	513.52	-11.07	-9.66	516.16	510.31	-27.07	11.63	-78.57	26.82	12.66	14.16	PASS
592.79	591.84	-18.91	-13.10	593.31	586.79	-33.10	19.77	-87.58	36.16	21.69	14.47	PASS
614.00†	612.90	-21.31	-14.07	613.99	607.24	-34.77	22.27	-90.55	39.16	24.62	14.54	PASS
714.00†	712.15	-32.62	-18.61	710.96	702.93	-43.03	35.59	-99.80	55.96	41.02	14.95	PASS
814.00†	811.40	-43.93	-23.16	806.67	796.90	-52.26	51.26	-104.09	76.27	60.83	15.44	PASS
914.00†	910.66	-55.24	-27.70	902.05	889.93	-62.49	69.62	-106.08	99.77	83.94	15.82	PASS
1014.00†	1009.91	-66.54	-32.25	998.56	983.85	-73.33	89.01	-107.13	124.21	107.82	16.39	PASS
1114.00†	1109.17	-77.85	-36.80	1095.79	1078.42	-84.39	108.69	-107.78	148.84	131.75	17.09	PASS
1214.00†	1208.42	-89.16	-41.34	1193.57	1173.61	-95.50	128.07	-108.26	173.07	155.21	17.86	PASS
1314.00†	1307.68	-100.47	-45.89	1291.64	1269.20	-106.43	147.06	-108.67	196.84	178.17	18.66	PASS

C-C Clearance Distance Cutoff: 200.00 feet

HOLE & CASING SECTIONS Offset Wellbore: Dever A2 AWB Offset Wellpath: Dever A2 AWP

String/Diameter	Start MD [feet]	End MD [feet]	Interval [feet]	Start TVD [feet]	End TVD [feet]	Start N/S [feet]	Start E/W [feet]	End N/S [feet]	End E/W [feet]
12.25in Open Hole	19.00	920.00	901.00	19.00	912.41	-5.99	-0.15	-22.65	22.24
8.675in Casing Surface	19.00	920.00	901.00	19.00	912.41	-5.99	-0.15	-22.65	22.24
7.875in Open Hole	920.00	8672.00	7752.00	912.41	8561.48	-22.65	22.24	-181.26	277.82

WELLPATH COMPOSITION Offset Wellbore: Dever A2 AWB Offset Wellpath: Dever A2 AWP

Start MD [feet]	End MD [feet]	Positional Uncertainty Model	Log Name/Comment	Wellbore
19.00	8612.00	MTC (Collar, pre-2000) (Standard)	BHI MWD <118-8612>	Dever A2 AWB
8612.00	8672.00	Blind Drilling (std)	Projection to bit	Dever A2 AWB

OFFSET WELLPATH MD REFERENCE - Offset Wellbore: Dever A2 AWB Offset Wellpath: Dever A2 AWP

MD Reference: Rig on Dever A2 (RT)	Offset TVD & local coordinates use Reference Wellpath settings (See WELLPATH DATUM on page 1 of this report)
---	---



ANTERO RESOURCES

Location: COLORADO Slot: ALT SLOT A4
Field: GARFIELD COUNTY Well: Dever A4 ALT SHL
Facility: SEC.18-T6S-R92W Wellbore: Dever A4 ALT SHL PWB



Plot reference wellbore is Dever A4 ALT SHL PWB	
True vertical depths are referenced to Rig on ALT SLOT A4 (RT)	Grid System: NAD83 / Lambert Colorado State Planes, Central Zone (502), US feet
Measured depths are referenced to Rig on ALT SLOT A4 (RT)	North Reference: Grid north
Rig on ALT SLOT A4 (RT) to Mean Sea Level: 5582 feet	Scale: True distance
Mean Sea Level to Mud line (Facility - SEC.18-T6S-R92W): 0 feet	Depths are in feet
Coordinates are in feet referenced to Slot	Created by: willeria on 1/5/2007

