

---

# **OXY GRAND JUNCTION EBUSINESS**

---

**CC 697-05-20B  
GRAND VALLEY  
Garfield County , Colorado**

**Cement Surface Casing  
28-Oct-2011**

**Post Job Report**

## The Road to Excellence Starts with Safety

Sold To #: 344034	Ship To #: 8559373	Quote #:	Sales Order #: 8559373
Customer: OXY GRAND JUNCTION EBUSINESS	Customer Rep: VILLEGAS, ALEX		
Well Name: CC	Well #: 697-05-20B	API/UWI #: 05-045-20375	
Field: GRAND VALLEY	City (SAP):	County/Parish: Garfield	State: Colorado
Lat: N 39.555 deg. OR N 39 deg. 33 min. 16.452 secs.	Long: W 108.242 deg. OR W -109 deg. 45 min. 27.648 secs.		
Contractor: H&P Drilling	Rig/Platform Name/Num: H&P 353		
Job Purpose: Cement Surface Casing			
Well Type: Development Well	Job Type: Cement Surface Casing		
Sales Person: HIMES, JEFFREY	Srv Supervisor: LEIST, JAMES	MBU ID Emp #: 362787	

## Job Personnel

HES Emp Name	Exp Hrs	Emp #	HES Emp Name	Exp Hrs	Emp #	HES Emp Name	Exp Hrs	Emp #
BLUST, CHARLES Thomas	5	386662	EICKHOFF, ROBERT Edward	5	495311	JENSEN, SHANE Lynn	5	441759
LEIST, JAMES R	5	362787						

## Equipment

HES Unit #	Distance-1 way	HES Unit #	Distance-1 way	HES Unit #	Distance-1 way	HES Unit #	Distance-1 way
10784080	120 mile	10804579	120 mile	11259882	120 mile	11560046	120 mile
11562538	120 mile	6543	120 mile				

## Job Hours

Date	On Location Hours	Operating Hours	Date	On Location Hours	Operating Hours	Date	On Location Hours	Operating Hours
10-28-11	12	5						

**TOTAL** Total is the sum of each column separately

## Job

## Job Times

Formation Name	Formation Depth (MD)	Top	Bottom	Called Out	Date	Time	Time Zone
Form Type			BHST	On Location	27 - Oct - 2011	16:30	MST
Job depth MD	2694. ft		Job Depth TVD	Job Started	28 - Oct - 2011	01:00	MST
Water Depth			Wk Ht Above Floor	Job Completed	28 - Oct - 2011	12:43	MST
Perforation Depth (MD)	From	To	Deparied Loc		28 - Oct - 2011	16:37	MST
					28 - Oct - 2011	18:30	MST

## Well Data

Description	New / Used	Max pressure psig	Size in	ID in	Weight lbm/ft	Thread	Grade	Top MD ft	Bottom MD ft	Top TVD ft	Bottom TVD ft
14 3/4" Open Hole				14.75				.	2750.		
9 5/8" Surface Casing	New		9.625	8.921	36.		J-55	.	2750.		

Sales/Rental/3<sup>rd</sup> Party (HES)

Description	Qty	Qty uom	Depth	Supplier
PLUG,CMTG,TOP,9 5/8,HWE,8.16 MIN/9.06 MA	1	EA		

## Tools and Accessories

Type	Size	Qty	Make	Depth	Type	Size	Qty	Make	Depth	Type	Size	Qty	Make
Guide Shoe					Packer					Top Plug	9.625	1	
Float Shoe					Bridge Plug					Bottom Plug			
Float Collar					Retainer					SSR plug set			
Insert Float										Plug Container	9.625	1	
Stage Tool										Centralizers			

## Miscellaneous Materials

Gelling Agt	Conc	Surfactant	Conc	Acid Type	Qty	Conc	%
Treatment Fld	Conc	Inhibitor	Conc	Sand Type	Size		Qty

## Fluid Data

Stage/Plug #: 1

Fluid #	Stage Type	Fluid Name	Qty	Qty uom	Mixing Density lbm/gal	Yield ft <sup>3</sup> /sk	Mix Fluid Gal/sk	Rate bbl/min	Total Mix Fluid Gal/sk
1	Water Spacer		20.00	bbl	8.33	.0	.0	4	
2	Gel Spacer		20.00	bbl	.	.0	.0	4	
3	Water Spacer		20.00	bbl	.	.0	.0	4	
4	VersaCem Lead Cement	VERSACEM (TM) SYSTEM (452010)	1060.0	sacks	12.3	2.33	12.62	6	12.62
	12.62 Gal	FRESH WATER							
5	VersaCem Tail Cement	VERSACEM (TM) SYSTEM (452010)	150.0	sacks	12.8	2.07	10.67	6	10.67
	10.67 Gal	FRESH WATER							
6	Displacement		200.00	bbl	.	.0	.0	6	
7	Topout Cement	HALCEM (TM) SYSTEM (452986)	125.0	sacks	12.5	1.97	10.96	3	10.96
	10.96 Gal	FRESH WATER							
<b>Calculated Values</b>		<b>Pressures</b>		<b>Volumes</b>					
Displacement	200	Shut In: Instant		Lost Returns	579	Cement Slurry	494	Pad	
Top Of Cement	SURFACE	5 Min		Cement Returns	0	Actual Displacement	200	Treatment	
Frac Gradient		15 Min		Spacers	60	Load and Breakdown		Total Job	758
<b>Rates</b>									
Circulating	6	Mixing		6	Displacement	6	Avg. Job	6	
Cement Left In Pipe	Amount	45.9 ft	Reason	Shoe Joint					
Frac Ring # 1 @	ID		Frac ring # 2 @	ID		Frac Ring # 3 @	ID	Frac Ring # 4 @	ID
The Information Stated Herein Is Correct				Customer Representative Signature					

*The Road to Excellence Starts with Safety*

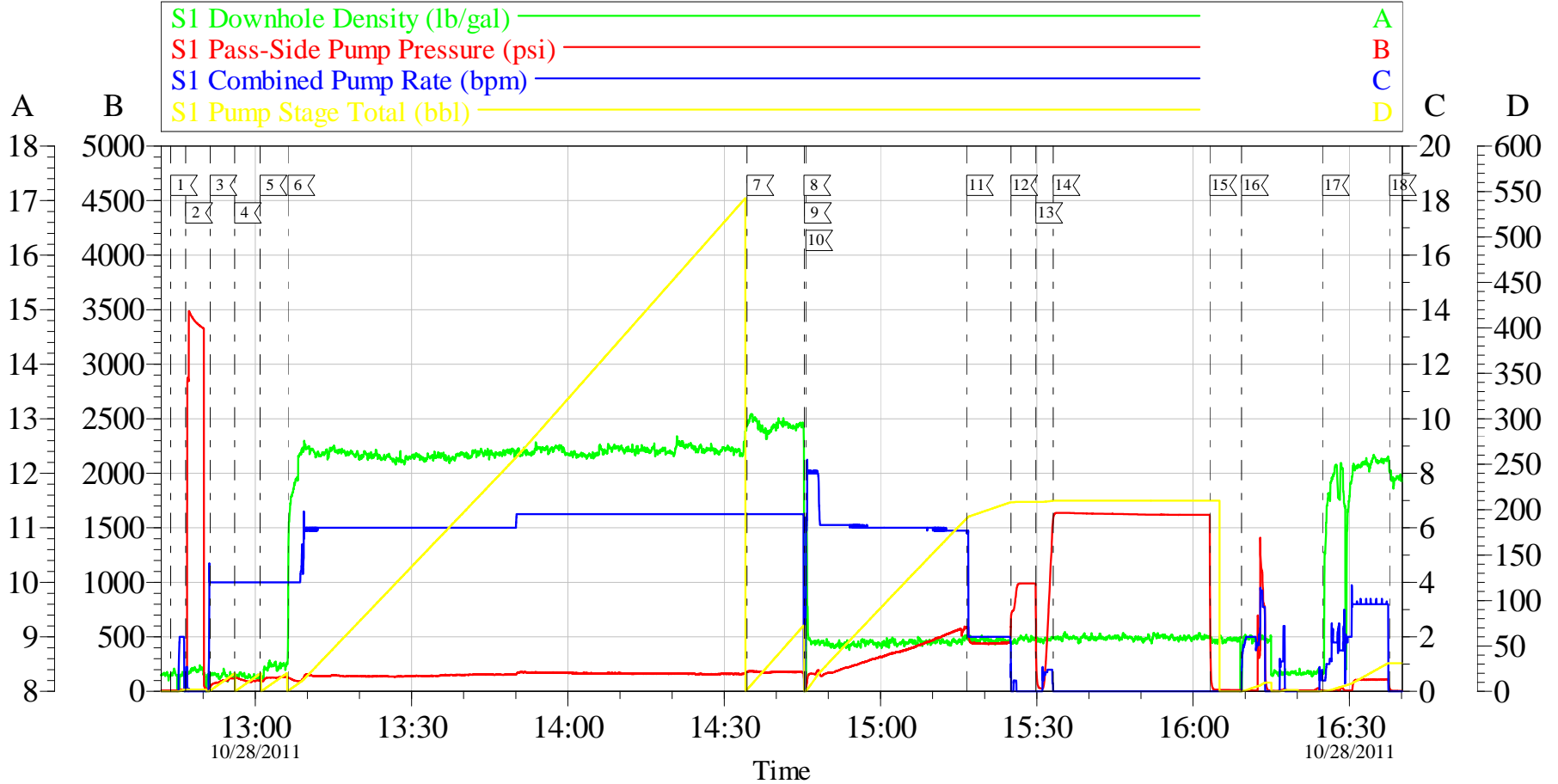
<b>Sold To #:</b> 344034	<b>Ship To #:</b> 8559373	<b>Quote #:</b>	<b>Sales Order #:</b> 8559373
<b>Customer:</b> OXY GRAND JUNCTION EBUSINESS		<b>Customer Rep:</b> VILLEGAS, ALEX	
<b>Well Name:</b> CC	<b>Well #:</b> 697-05-20B	<b>API/UWI #:</b> 05-045-20375	
<b>Field:</b> GRAND VALLEY	<b>City (SAP):</b>	<b>County/Parish:</b> Garfield	<b>State:</b> Colorado
<b>Legal Description:</b>			
<b>Lat:</b> N 39.555 deg. OR N 39 deg. 33 min. 16.452 secs.		<b>Long:</b> W 108.242 deg. OR W -109 deg. 45 min. 27.648 secs.	
<b>Contractor:</b> H&P Drilling		<b>Rig/Platform Name/Num:</b> H&P 353	
<b>Job Purpose:</b> Cement Surface Casing			<b>Ticket Amount:</b>
<b>Well Type:</b> Development Well		<b>Job Type:</b> Cement Surface Casing	
<b>Sales Person:</b> HIMES, JEFFREY		<b>Srvc Supervisor:</b> LEIST, JAMES	<b>MBU ID Emp #:</b> 362787

Activity Description	Date/Time	Cht #	Rate bbl/min	Volume bbl		Pressure psig		Comments
				Stage	Total	Tubing	Casing	
Call Out	10/27/2011 16:30							
Arrive At Loc	10/28/2011 01:00							RUNNING CASING
Pre-Convoy Safety Meeting	10/28/2011 01:27							WITH ALL HES PERSONNEL
Pre-Rig Up Safety Meeting	10/28/2011 01:27							WITH ALL ON HES PERSONNEL
Rig-Up Completed	10/28/2011 02:00							JOB PUMPED OFF LINE
Pre-Job Safety Meeting	10/28/2011 12:25							WITH ALL ON LOCATION PERSONNEL, RIG CIRULATED FOR 30 MIN. PRIOR TO CMT JOB AT 6 BPM WITH 40 PSI
Start Job	10/28/2011 12:43							TP-2694, TD-2710, S.J.-45.9, HOLE- 14 3/4, MUD-9.1
Pressure Test	10/28/2011 12:46							3364 PSI
Pump Spacer	10/28/2011 12:51		4	20			98.0	FRESH WATER
Pump Spacer	10/28/2011 12:56		4	20			100.0	GEL SPACER
Pump Spacer	10/28/2011 13:00		4	20			133.0	FRESH WATER
Activity Description	Date/Time	Cht #	Rate bbl/min	Volume bbl		Pressure psig		Comments
				Stage	Total	Tubing	Casing	

Pump Lead Cement	10/28/2011 13:06		6	439			178.0	1060 SKS, 12.3 PPG, 2.33 FT3/SK, 12.62 GAL/SK, ADJUSTED RATE TO MIX WATER TO BE MORE ACCURATE WITH BBL GONE, GOT RETURNS WITH ABOUT 300 GONE
Pump Tail Cement	10/28/2011 14:34		6	55			175.0	150 SKS, 12.8 PPG, 2.07 FT3/SK, 10.67 GAL/SK
Shutdown	10/28/2011 14:45							TO DROP TOP PLUG
Drop Top Plug	10/28/2011 14:45							AWAY
Pump Displacement	10/28/2011 14:45		6	200			594.0	FRESH WATER, LOST RETURNS WITH 40 GONE
Slow Rate	10/28/2011 15:16		2	185			440.0	TO BUMP PLUG
Bump Plug	10/28/2011 15:25		2	200			447.0	BUMPED
Check Floats	10/28/2011 15:29						990.0	HOLDING
Other	10/28/2011 15:33						1632. 0	CASING TEST 1500 PSI FOR 30 MIN.
Other	10/28/2011 16:09		3	10			670.0	PUMP PARISITE STRING WITH SUGAR WATER
Pump Cement	10/28/2011 16:24		2	44			100.0	TOP OUT 125 SKS 12.5 PPG, 1.97 FT3/SK, 10.96 GAL/SK PUMPED 18 BBLs ON THIS WELL AND 26 ON PREVIOUS WELL
End Job	10/28/2011 16:37							
Pre-Rig Down Safety Meeting	10/28/2011 16:45							WITH ALL HES PERSONNEL
Rig-Down Completed	10/28/2011 18:00							
Pre-Convoy Safety Meeting	10/28/2011 18:30							WITH ALL HES PERSONNEL
Comment	10/28/2011 18:30							THANKYOU FOR USING HALLIBURTON CEMENT, JAMES LEIST AND CREW

# OXY

## 9 5/8 SURFACE CASING



Local Event Log			
1 START JOB	12:43:46	2 PRESSURE TEST	12:46:39
3 PUMP H2O SPACER	12:51:19	4 PUMP GEL SPACER	12:56:02
5 PUMP H2O SPACER	13:00:55	6 PUMP LEAD CMT	13:06:16
7 PUMP TAIL CMT	14:34:22	8 SHUTDOWN	14:45:18
9 DROP TOP PLUG	14:45:25	10 PUMP DISPLACEMENT	14:45:41
11 SLOW RATE	15:16:32	12 BUMP PLUG	15:25:02
13 CHECK FLOATS	15:29:49	14 CASING TEST	15:33:08
15 RELEASE PSI	16:03:13	16 PUMP PARISITE STRING	16:09:18
17 TOP OUT	16:24:51	18 END JOB	16:37:41

Customer: OXY  
Well Description: CC 697-05-20B  
Company Rep: ALAX

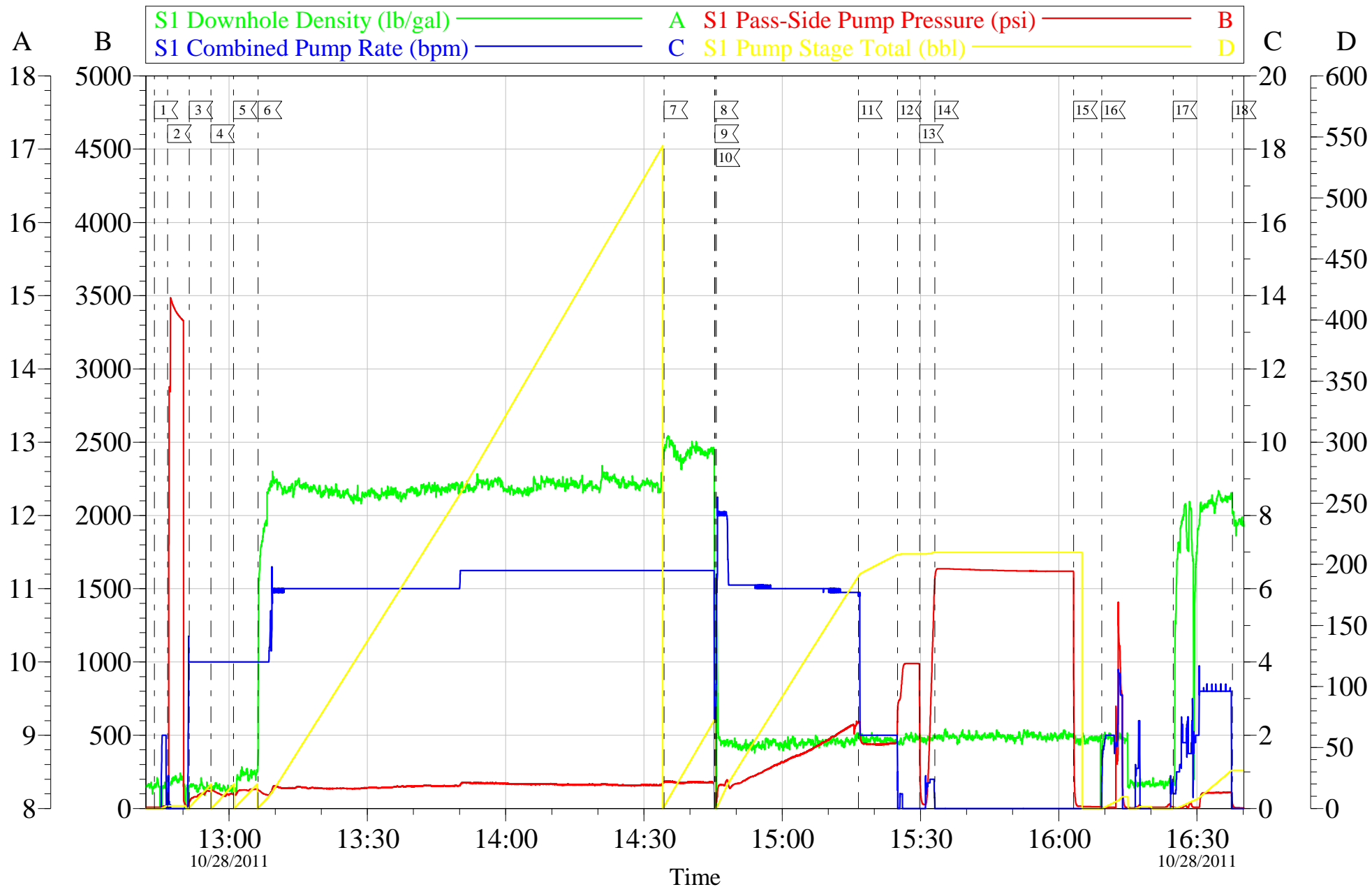
Job Date: 28-Oct-2011  
Job Type: SURFACE  
Cement Supervisor: JAMES LEIST

Sales Order #: 8559373  
ADC Used: YES  
Elite #5 SHANE JENSEN

OptiCem v6.4.9  
28-Oct-11 17:07

# OXY

## 9 5/8 SURFACE CASING



Customer: OXY  
 Well Description: CC 697-05-20B  
 Company Rep: ALAX

Job Date: 28-Oct-2011  
 Job Type: SURFACE  
 Cement Supervisor: JAMES LEIST

Sales Order #: 8559373  
 ADC Used: YES  
 Elite #:5 SHANE JENSEN

OptiCem v6.4.9  
 28-Oct-11 17:08

<b>Sales Order #:</b> 8559373	<b>Line Item:</b> 10	<b>Survey Conducted Date:</b> 10/28/2011
<b>Customer:</b> OXY GRAND JUNCTION EBUSINESS		<b>Job Type (BOM):</b> CMT SURFACE CASING BOM
<b>Customer Representative:</b> ALAX VILLIGAS		<b>API / UWI: (leave blank if unknown)</b> 05-045-20375
<b>Well Name:</b> CC		<b>Well Number:</b> 697-05-20B
<b>Well Type:</b> Development Well	<b>Well Country:</b> United States of America	
<b>H2S Present:</b> No	<b>Well State:</b> Colorado	<b>Well County:</b> Garfield

Dear Customer,

We hope that you were satisfied with the service quality of this job performed by Halliburton. It is the aim of our management and service personnel to deliver equipment and service of a standard unmatched in the service sector of the energy industry.

Please take the time to let us know if our performance met with your satisfaction. Please be as critical as possible to ensure we constantly improve our service. Your comments are of great value to us and are intended for the exclusive use of Halliburton.

### CUSTOMER SATISFACTION SURVEY

CATEGORY	CUSTOMER SATISFACTION RESPONSE	
Survey Conducted Date	The date the survey was conducted	10/28/2011
Survey Interviewer	The survey interviewer is the person who initiated the survey.	JAMES LEIST (HX18202)
Customer Participation	Did the customer participate in this survey? (Y/N)	Yes
Customer Representative	Enter the Customer representative name	ALAX VILLIGAS
HSE	Was our HSE performance satisfactory? Circle Y or N	Yes
Equipment	Were you satisfied with our Equipment? Circle Y or N	Yes
Personnel	Were you satisfied with our people? Circle Y or N	Yes
Customer Comment	Customer's Comment	GREAT JOB THANKS
Job DVA	Did we provide job DVA above our normal service today? Circle Y or N	No
Time	Please enter hours in decimal format to nearest quarter hour.	
Other	Enter short text for other efficiencies gained.	
Customer Initials	Customer's Initials	
Please provide details	Please describe how the job efficiencies were gained.	

CUSTOMER SIGNATURE