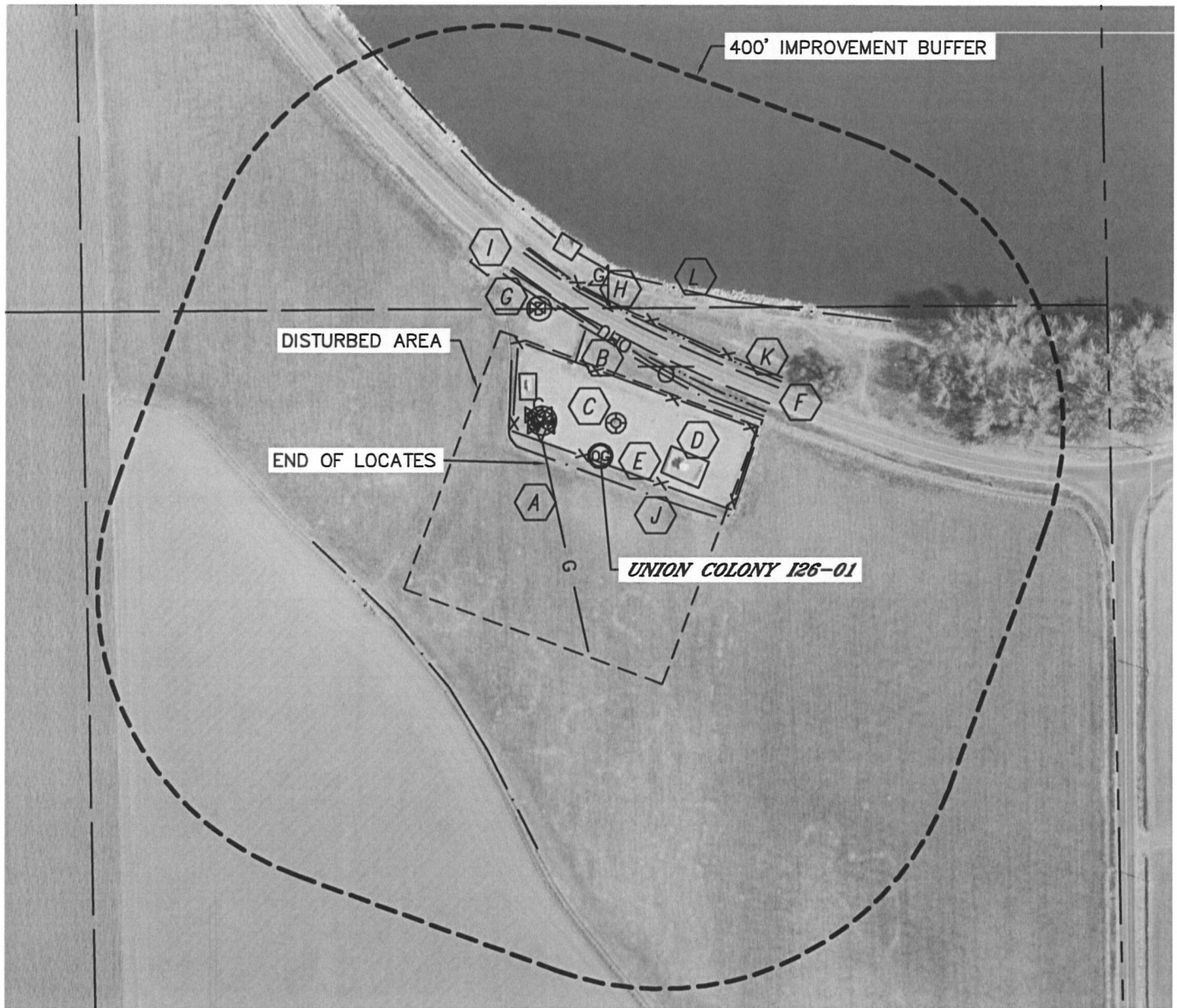


Lat40°, Inc. 1635 Foxtrail Drive, Suite 325 Loveland, CO 970-776-3321

LOCATION DRAWING

UNION COLONY I26-01

SECTION: 26
TOWNSHIP: 6N
RANGE: 66W



IMPROVEMENTS:

- | | |
|---|---|
| A DCP GAS LINE 70' SW | G WATER VALVE & MANHOLE 209' NW |
| B OVERHEAD UTILITY 139' NE | H GAS LINE MARKER 200' N |
| C EX. O&G WELL 47' NE | I CULVERT 177' NW
CONC. BOX CULVERT 279' NW |
| D EX. PRODUCTION EQUIPMENT (NOBLE)
82' E, 89' & 112' NW | J DITCH 25' SW, 123' NW, 133' NE, 188' SE, 344' SW |
| E FENCE 8' SW, 104' & 188' NE, 259' NW | K BARROW DITCH 144' & 185' NE |
| F COUNTY ROAD 66 151' NE | L SEELEY LAKE 237' NE |

NEAREST: BUILDING 1150' SE, PUBLIC ROAD 151' NE (CR 66),
ABOVE GROUND UTILITY 139' NE, RAILROAD 5280'+ SW, PROPERTY LINE 168' NE

