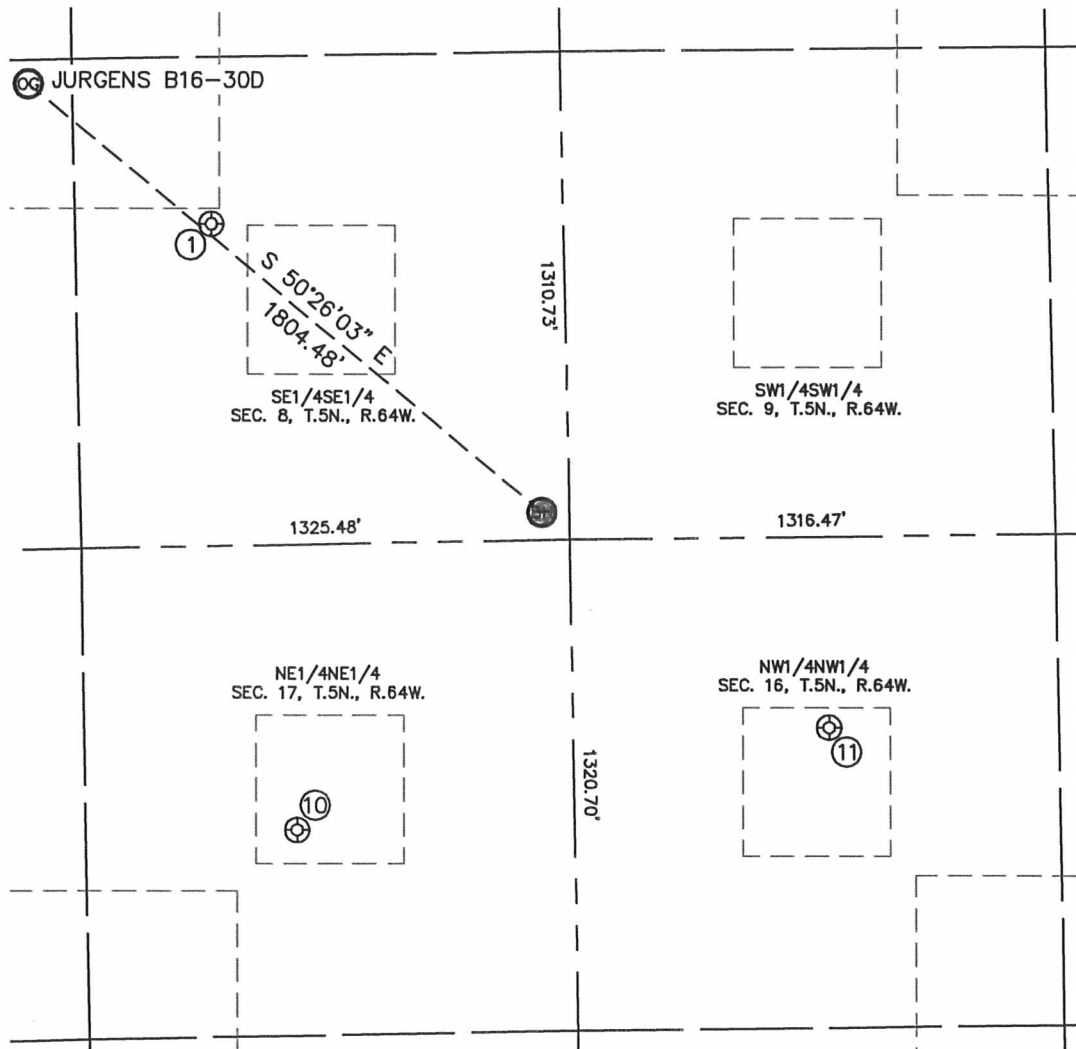


SITE SKETCH

JURGENS B16-30D

SECTION: 8
TOWNSHIP: 5N
RANGE: 64W



①

JURGENS B8-16
SE1/4SE1/4
865' FSL
956' FEL
LAT-40.40891°N
LONG-104.56795°W
PDOP:1.4
ELEV: 4590'

⑩

HOSHIKO 41-17
NE1/4NE1/4
767' FNL
753' FEL
LAT-40.40443°N
LONG-104.56717°W
PDOP:1.3
ELEV: 4613'

⑪

PATRIOT B16-4
NW1/4NW1/4
513' FNL
695' FWL
LAT-40.40515°N
LONG-104.56198°W
PDOP:1.8
ELEV: 4611'

