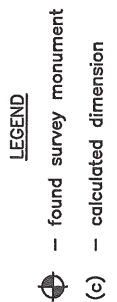
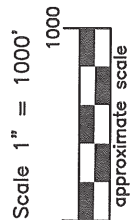
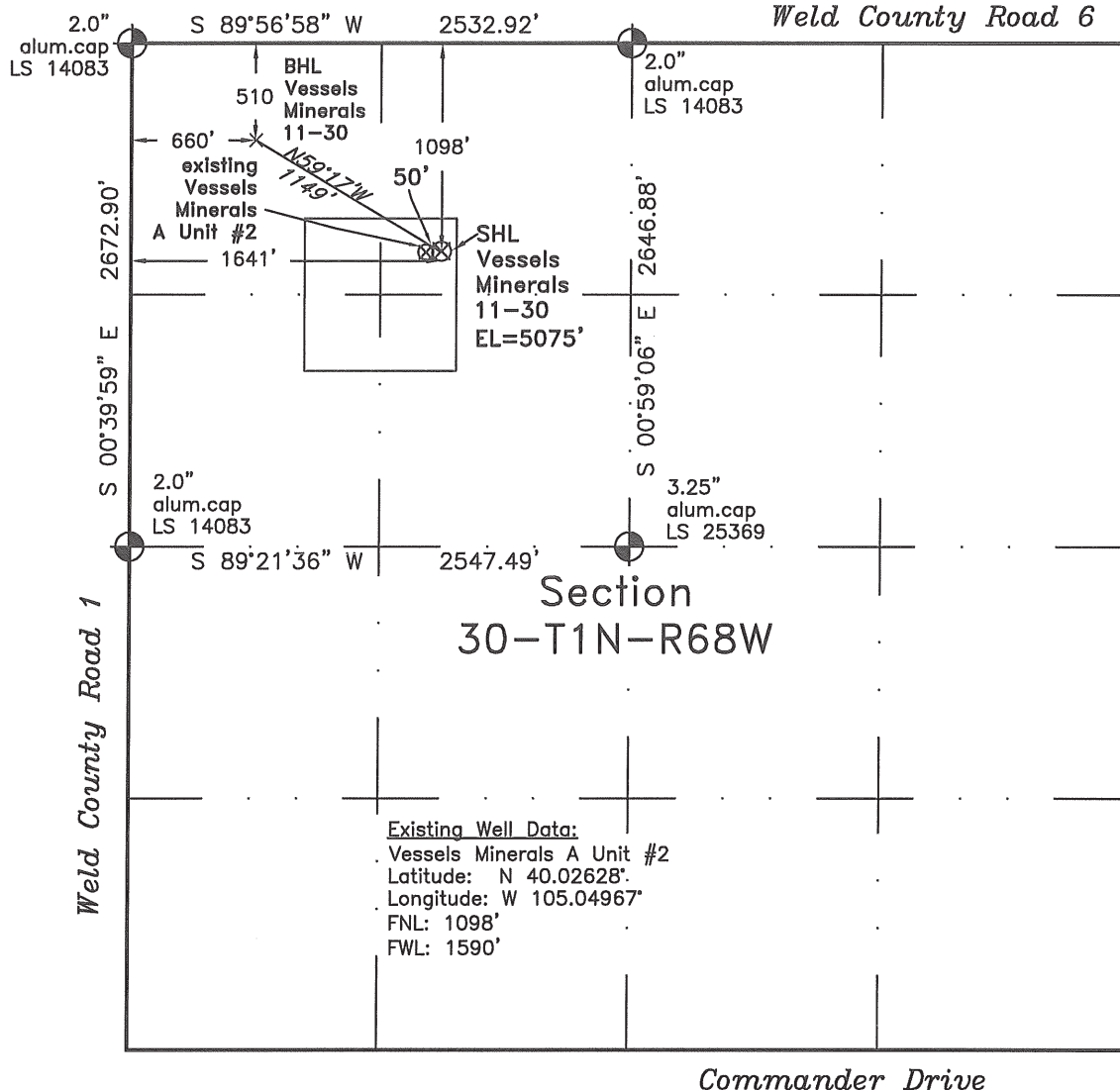


WELL LOCATION CERTIFICATE

THIS MAP DOES NOT REPRESENT A BOUNDARY SURVEY



Existing Well Data:
 Vessels Minerals A Unit #2
 Latitude: N 40.02628°
 Longitude: W 105.04967°
 FNL: 1098'
 FWL: 1590'

In accordance with a request from Cynthia Owens of EnCana Oil & Gas (USA) Inc., Frederick Land Surveying, Inc. has determined the location of the **VESELS MINERALS 11-30** well site to be SHL: 1098' FNL and 1641' FWL, (BHL 510' FNL and 660' FWL) as measured at ninety (90) degrees from the section lines of Section 30, Township 1 North, Range 68 West of the 6th Principal Meridian, Town of Erie, Weld County, Colorado.

Proposed Surface Hole Data:

Latitude: N 40.02628° BHL(40.02790°)

Longitude: W 105.04949° BHL(105.05300°)

Nearest: Building 1299' northwest Above Ground Utility 1124' northwest
 Public Road 1075' north Railroad (abandoned) 899' west
 Property Line 323' east

PDOP: 3.2

Notes:

- 1) Bearings and distances based on NAD 83 Colorado North State Plane Coordinates using RTK GPS observations taken 5/26/10 by operator Craig Burke.
- 2) Conversion factor to ground (1.000279397).
- 3) Elevations based on NAVD 88 GPS heights and Geoid 2003 corrections.
- 4) See improvement map for visible improvements within 400 feet of pad site.
- 5) The location falls on non-crop (residential) land.

NOTICE: According to Colorado law you MUST commence any legal action based upon any defect in this W.L.C. within 3 years after you first discover such defect. In no event may any action based upon any defect in this W.L.C. be commenced more than 10 years from this said date of the certification shown hereon.

I hereby certify that this Well Location Certificate was prepared by me or under my direct supervision on 5/27/10 for and on behalf of EnCana Oil & Gas (USA) Inc. That it is a true and correct copy of the original Survey Plot and that it is not to be relied upon for establishment of fences, buildings, or other future improvement lines.

Alex Rondon Perkins LS#34176
 Job #: 08119.038 6-2-2010