

Whiting Oil & Gas

Well Name: **Wildhorse #06-0634H**

Surface Location: Wildhorse #06-0634H Pad Sec.6-T9N-R59W
North American Datum 1983 , US State Plane 1983 , Colorado Northern Zone

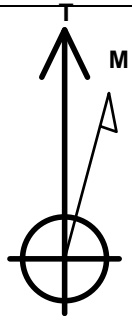
Ground Elevation: 5186.5

+N/-S	+E/-W	Northing	Easting	Latitude	Longitude	Slot
0.0	0.0	1532489.70	3410188.18	40.785664	-104.018711	

Original Well Elev WELL @ 5201.5ft (Original Well Elev)

WELLBORE TARGET DETAILS (MAP CO-ORDINATES AND LAT/LONG)

Name	TVD	+N/-S	+E/-W	Northing	Easting	Latitude	Longitude	Shape
HARDLINE 660'FNL	1.0	-340.0	-400.0	1532143.06	3409793.92	40.784731	-104.020155	Polygon
HARDLINE 660'FSL	1.0	-4158.5	-407.8	1528324.97	3409849.90	40.774250	-104.020183	Polygon
TARGET BHL 660'FSL & 1942'FEL	6445.0	-4158.5	-7.8	1528331.63	3410249.89	40.774250	-104.018739	Point



Azimuths to True North
Magnetic North: 8.43°

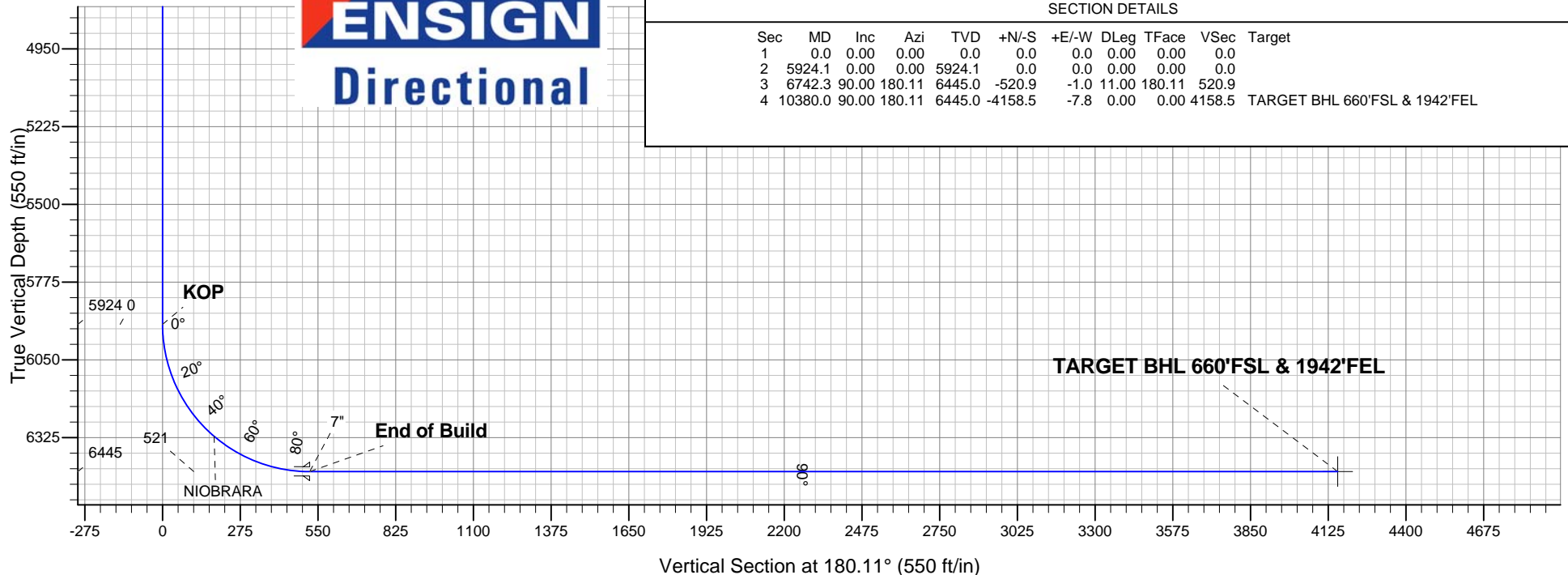
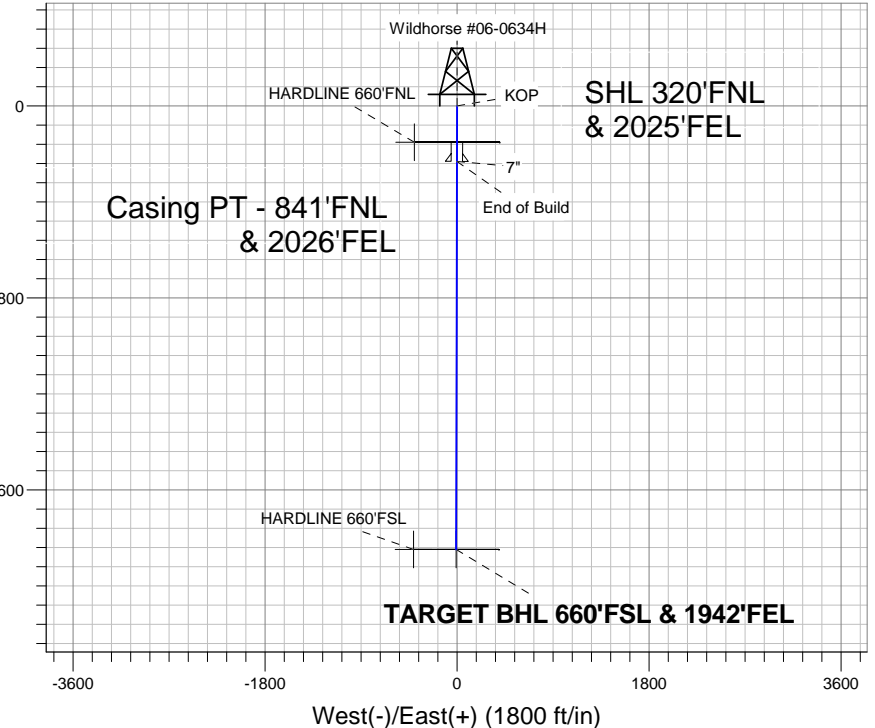
Magnetic Field
Strength: 53363.2snT
Dip Angle: 67.47°
Date: 11/14/2011
Model: IGRF2010

ANNOTATIONS

TVD	MD	Annotation
5924.1	5924.1	KOP
6445.0	6742.3	End of Build

Wildhorse #06-0634H Pad Sec.6-T9N-R59W
Wildhorse #06-0634H
Plan #1 (11-14-11)
16:48, November 14 2011

South(-)/North(+) (1800 ft/in)



ENSIGN
Directional

SECTION DETAILS

Sec	MD	Inc	Azi	TVD	+N/-S	+E/-W	DLeg	TFace	VSec	Target
1	0.0	0.00	0.00	0.0	0.0	0.0	0.00	0.00	0.0	
2	5924.1	0.00	0.00	5924.1	0.0	0.0	0.00	0.00	0.0	
3	6742.3	90.00	180.11	6445.0	-520.9	-1.0	11.00	180.11	520.9	
4	10380.0	90.00	180.11	6445.0	-4158.5	-7.8	0.00	0.00	4158.5	TARGET BHL 660'FSL & 1942'FEL



Whiting Oil & Gas

SEC.6-T9N-R59W

Wildhorse #06-0634H Pad Sec.6-T9N-R59W

Wildhorse #06-0634H

Wellbore #1

Plan: Plan #1 (11-14-11)

Standard Planning Report

14 November, 2011

Plan Sections										
Measured Depth (ft)	Inclination (°)	Azimuth (°)	Vertical Depth (ft)	+N/-S (ft)	+E/-W (ft)	Dogleg Rate (°/100ft)	Build Rate (°/100ft)	Turn Rate (°/100ft)	TFO (°)	Target
0.0	0.00	0.00	0.0	0.0	0.0	0.00	0.00	0.00	0.00	
5,924.1	0.00	0.00	5,924.1	0.0	0.0	0.00	0.00	0.00	0.00	
6,742.3	90.00	180.11	6,445.0	-520.9	-1.0	11.00	11.00	0.00	180.11	
10,380.0	90.00	180.11	6,445.0	-4,158.5	-7.8	0.00	0.00	0.00	0.00	TARGET BHL 660'

Database:	Landmark	Local Co-ordinate Reference:	Well Wildhorse #06-0634H
Company:	Whiting Oil & Gas	TVD Reference:	WELL @ 5201.5ft (Original Well Elev)
Project:	SEC.6-T9N-R59W	MD Reference:	WELL @ 5201.5ft (Original Well Elev)
Site:	Wildhorse #06-0634H Pad Sec.6-T9N-R59W	North Reference:	True
Well:	Wildhorse #06-0634H	Survey Calculation Method:	Minimum Curvature
Wellbore:	Wellbore #1		
Design:	Plan #1 (11-14-11)		

Planned Survey									
Measured Depth (ft)	Inclination (°)	Azimuth (°)	Vertical Depth (ft)	+N/-S (ft)	+E/-W (ft)	Vertical Section (ft)	Dogleg Rate (°/100ft)	Build Rate (°/100ft)	Turn Rate (°/100ft)
0.0	0.00	0.00	0.0	0.0	0.0	0.0	0.00	0.00	0.00
1.0	0.00	0.00	1.0	0.0	0.0	0.0	0.00	0.00	0.00
HARDLINE 660'FNL - HARDLINE 660'FSL									
40.0	0.00	0.00	40.0	0.0	0.0	0.0	0.00	0.00	0.00
80.0	0.00	0.00	80.0	0.0	0.0	0.0	0.00	0.00	0.00
120.0	0.00	0.00	120.0	0.0	0.0	0.0	0.00	0.00	0.00
160.0	0.00	0.00	160.0	0.0	0.0	0.0	0.00	0.00	0.00
200.0	0.00	0.00	200.0	0.0	0.0	0.0	0.00	0.00	0.00
240.0	0.00	0.00	240.0	0.0	0.0	0.0	0.00	0.00	0.00
280.0	0.00	0.00	280.0	0.0	0.0	0.0	0.00	0.00	0.00
320.0	0.00	0.00	320.0	0.0	0.0	0.0	0.00	0.00	0.00
360.0	0.00	0.00	360.0	0.0	0.0	0.0	0.00	0.00	0.00
400.0	0.00	0.00	400.0	0.0	0.0	0.0	0.00	0.00	0.00
440.0	0.00	0.00	440.0	0.0	0.0	0.0	0.00	0.00	0.00
480.0	0.00	0.00	480.0	0.0	0.0	0.0	0.00	0.00	0.00
520.0	0.00	0.00	520.0	0.0	0.0	0.0	0.00	0.00	0.00
560.0	0.00	0.00	560.0	0.0	0.0	0.0	0.00	0.00	0.00
600.0	0.00	0.00	600.0	0.0	0.0	0.0	0.00	0.00	0.00
640.0	0.00	0.00	640.0	0.0	0.0	0.0	0.00	0.00	0.00
680.0	0.00	0.00	680.0	0.0	0.0	0.0	0.00	0.00	0.00
720.0	0.00	0.00	720.0	0.0	0.0	0.0	0.00	0.00	0.00
760.0	0.00	0.00	760.0	0.0	0.0	0.0	0.00	0.00	0.00
800.0	0.00	0.00	800.0	0.0	0.0	0.0	0.00	0.00	0.00
840.0	0.00	0.00	840.0	0.0	0.0	0.0	0.00	0.00	0.00
880.0	0.00	0.00	880.0	0.0	0.0	0.0	0.00	0.00	0.00
920.0	0.00	0.00	920.0	0.0	0.0	0.0	0.00	0.00	0.00
960.0	0.00	0.00	960.0	0.0	0.0	0.0	0.00	0.00	0.00
1,000.0	0.00	0.00	1,000.0	0.0	0.0	0.0	0.00	0.00	0.00
1,040.0	0.00	0.00	1,040.0	0.0	0.0	0.0	0.00	0.00	0.00
1,080.0	0.00	0.00	1,080.0	0.0	0.0	0.0	0.00	0.00	0.00
1,120.0	0.00	0.00	1,120.0	0.0	0.0	0.0	0.00	0.00	0.00
1,160.0	0.00	0.00	1,160.0	0.0	0.0	0.0	0.00	0.00	0.00
1,200.0	0.00	0.00	1,200.0	0.0	0.0	0.0	0.00	0.00	0.00
1,240.0	0.00	0.00	1,240.0	0.0	0.0	0.0	0.00	0.00	0.00
1,280.0	0.00	0.00	1,280.0	0.0	0.0	0.0	0.00	0.00	0.00
1,320.0	0.00	0.00	1,320.0	0.0	0.0	0.0	0.00	0.00	0.00
1,360.0	0.00	0.00	1,360.0	0.0	0.0	0.0	0.00	0.00	0.00
1,400.0	0.00	0.00	1,400.0	0.0	0.0	0.0	0.00	0.00	0.00
1,440.0	0.00	0.00	1,440.0	0.0	0.0	0.0	0.00	0.00	0.00
1,480.0	0.00	0.00	1,480.0	0.0	0.0	0.0	0.00	0.00	0.00
1,520.0	0.00	0.00	1,520.0	0.0	0.0	0.0	0.00	0.00	0.00
1,560.0	0.00	0.00	1,560.0	0.0	0.0	0.0	0.00	0.00	0.00
1,600.0	0.00	0.00	1,600.0	0.0	0.0	0.0	0.00	0.00	0.00
1,640.0	0.00	0.00	1,640.0	0.0	0.0	0.0	0.00	0.00	0.00
1,680.0	0.00	0.00	1,680.0	0.0	0.0	0.0	0.00	0.00	0.00
1,720.0	0.00	0.00	1,720.0	0.0	0.0	0.0	0.00	0.00	0.00
1,760.0	0.00	0.00	1,760.0	0.0	0.0	0.0	0.00	0.00	0.00
1,800.0	0.00	0.00	1,800.0	0.0	0.0	0.0	0.00	0.00	0.00
1,840.0	0.00	0.00	1,840.0	0.0	0.0	0.0	0.00	0.00	0.00
1,880.0	0.00	0.00	1,880.0	0.0	0.0	0.0	0.00	0.00	0.00
1,920.0	0.00	0.00	1,920.0	0.0	0.0	0.0	0.00	0.00	0.00
1,960.0	0.00	0.00	1,960.0	0.0	0.0	0.0	0.00	0.00	0.00
2,000.0	0.00	0.00	2,000.0	0.0	0.0	0.0	0.00	0.00	0.00
2,040.0	0.00	0.00	2,040.0	0.0	0.0	0.0	0.00	0.00	0.00

Database:	Landmark	Local Co-ordinate Reference:	Well Wildhorse #06-0634H
Company:	Whiting Oil & Gas	TVD Reference:	WELL @ 5201.5ft (Original Well Elev)
Project:	SEC.6-T9N-R59W	MD Reference:	WELL @ 5201.5ft (Original Well Elev)
Site:	Wildhorse #06-0634H Pad Sec.6-T9N-R59W	North Reference:	True
Well:	Wildhorse #06-0634H	Survey Calculation Method:	Minimum Curvature
Wellbore:	Wellbore #1		
Design:	Plan #1 (11-14-11)		

Planned Survey									
Measured Depth (ft)	Inclination (°)	Azimuth (°)	Vertical Depth (ft)	+N/-S (ft)	+E/-W (ft)	Vertical Section (ft)	Dogleg Rate (°/100ft)	Build Rate (°/100ft)	Turn Rate (°/100ft)
2,080.0	0.00	0.00	2,080.0	0.0	0.0	0.0	0.00	0.00	0.00
2,120.0	0.00	0.00	2,120.0	0.0	0.0	0.0	0.00	0.00	0.00
2,160.0	0.00	0.00	2,160.0	0.0	0.0	0.0	0.00	0.00	0.00
2,200.0	0.00	0.00	2,200.0	0.0	0.0	0.0	0.00	0.00	0.00
2,240.0	0.00	0.00	2,240.0	0.0	0.0	0.0	0.00	0.00	0.00
2,280.0	0.00	0.00	2,280.0	0.0	0.0	0.0	0.00	0.00	0.00
2,320.0	0.00	0.00	2,320.0	0.0	0.0	0.0	0.00	0.00	0.00
2,360.0	0.00	0.00	2,360.0	0.0	0.0	0.0	0.00	0.00	0.00
2,400.0	0.00	0.00	2,400.0	0.0	0.0	0.0	0.00	0.00	0.00
2,440.0	0.00	0.00	2,440.0	0.0	0.0	0.0	0.00	0.00	0.00
2,480.0	0.00	0.00	2,480.0	0.0	0.0	0.0	0.00	0.00	0.00
2,520.0	0.00	0.00	2,520.0	0.0	0.0	0.0	0.00	0.00	0.00
2,560.0	0.00	0.00	2,560.0	0.0	0.0	0.0	0.00	0.00	0.00
2,600.0	0.00	0.00	2,600.0	0.0	0.0	0.0	0.00	0.00	0.00
2,640.0	0.00	0.00	2,640.0	0.0	0.0	0.0	0.00	0.00	0.00
2,680.0	0.00	0.00	2,680.0	0.0	0.0	0.0	0.00	0.00	0.00
2,720.0	0.00	0.00	2,720.0	0.0	0.0	0.0	0.00	0.00	0.00
2,760.0	0.00	0.00	2,760.0	0.0	0.0	0.0	0.00	0.00	0.00
2,800.0	0.00	0.00	2,800.0	0.0	0.0	0.0	0.00	0.00	0.00
2,840.0	0.00	0.00	2,840.0	0.0	0.0	0.0	0.00	0.00	0.00
2,880.0	0.00	0.00	2,880.0	0.0	0.0	0.0	0.00	0.00	0.00
2,920.0	0.00	0.00	2,920.0	0.0	0.0	0.0	0.00	0.00	0.00
2,960.0	0.00	0.00	2,960.0	0.0	0.0	0.0	0.00	0.00	0.00
3,000.0	0.00	0.00	3,000.0	0.0	0.0	0.0	0.00	0.00	0.00
3,040.0	0.00	0.00	3,040.0	0.0	0.0	0.0	0.00	0.00	0.00
3,080.0	0.00	0.00	3,080.0	0.0	0.0	0.0	0.00	0.00	0.00
3,120.0	0.00	0.00	3,120.0	0.0	0.0	0.0	0.00	0.00	0.00
3,160.0	0.00	0.00	3,160.0	0.0	0.0	0.0	0.00	0.00	0.00
3,200.0	0.00	0.00	3,200.0	0.0	0.0	0.0	0.00	0.00	0.00
3,240.0	0.00	0.00	3,240.0	0.0	0.0	0.0	0.00	0.00	0.00
3,280.0	0.00	0.00	3,280.0	0.0	0.0	0.0	0.00	0.00	0.00
3,320.0	0.00	0.00	3,320.0	0.0	0.0	0.0	0.00	0.00	0.00
3,360.0	0.00	0.00	3,360.0	0.0	0.0	0.0	0.00	0.00	0.00
3,400.0	0.00	0.00	3,400.0	0.0	0.0	0.0	0.00	0.00	0.00
3,440.0	0.00	0.00	3,440.0	0.0	0.0	0.0	0.00	0.00	0.00
3,480.0	0.00	0.00	3,480.0	0.0	0.0	0.0	0.00	0.00	0.00
3,520.0	0.00	0.00	3,520.0	0.0	0.0	0.0	0.00	0.00	0.00
3,560.0	0.00	0.00	3,560.0	0.0	0.0	0.0	0.00	0.00	0.00
3,600.0	0.00	0.00	3,600.0	0.0	0.0	0.0	0.00	0.00	0.00
3,640.0	0.00	0.00	3,640.0	0.0	0.0	0.0	0.00	0.00	0.00
3,680.0	0.00	0.00	3,680.0	0.0	0.0	0.0	0.00	0.00	0.00
3,720.0	0.00	0.00	3,720.0	0.0	0.0	0.0	0.00	0.00	0.00
3,760.0	0.00	0.00	3,760.0	0.0	0.0	0.0	0.00	0.00	0.00
3,800.0	0.00	0.00	3,800.0	0.0	0.0	0.0	0.00	0.00	0.00
3,840.0	0.00	0.00	3,840.0	0.0	0.0	0.0	0.00	0.00	0.00
3,880.0	0.00	0.00	3,880.0	0.0	0.0	0.0	0.00	0.00	0.00
3,920.0	0.00	0.00	3,920.0	0.0	0.0	0.0	0.00	0.00	0.00
3,960.0	0.00	0.00	3,960.0	0.0	0.0	0.0	0.00	0.00	0.00
4,000.0	0.00	0.00	4,000.0	0.0	0.0	0.0	0.00	0.00	0.00
4,040.0	0.00	0.00	4,040.0	0.0	0.0	0.0	0.00	0.00	0.00
4,080.0	0.00	0.00	4,080.0	0.0	0.0	0.0	0.00	0.00	0.00
4,120.0	0.00	0.00	4,120.0	0.0	0.0	0.0	0.00	0.00	0.00
4,160.0	0.00	0.00	4,160.0	0.0	0.0	0.0	0.00	0.00	0.00
4,200.0	0.00	0.00	4,200.0	0.0	0.0	0.0	0.00	0.00	0.00

Database:	Landmark	Local Co-ordinate Reference:	Well Wildhorse #06-0634H
Company:	Whiting Oil & Gas	TVD Reference:	WELL @ 5201.5ft (Original Well Elev)
Project:	SEC.6-T9N-R59W	MD Reference:	WELL @ 5201.5ft (Original Well Elev)
Site:	Wildhorse #06-0634H Pad Sec.6-T9N-R59W	North Reference:	True
Well:	Wildhorse #06-0634H	Survey Calculation Method:	Minimum Curvature
Wellbore:	Wellbore #1		
Design:	Plan #1 (11-14-11)		

Planned Survey									
Measured Depth (ft)	Inclination (°)	Azimuth (°)	Vertical Depth (ft)	+N/-S (ft)	+E/-W (ft)	Vertical Section (ft)	Dogleg Rate (°/100ft)	Build Rate (°/100ft)	Turn Rate (°/100ft)
4,240.0	0.00	0.00	4,240.0	0.0	0.0	0.0	0.00	0.00	0.00
4,280.0	0.00	0.00	4,280.0	0.0	0.0	0.0	0.00	0.00	0.00
4,320.0	0.00	0.00	4,320.0	0.0	0.0	0.0	0.00	0.00	0.00
4,360.0	0.00	0.00	4,360.0	0.0	0.0	0.0	0.00	0.00	0.00
4,400.0	0.00	0.00	4,400.0	0.0	0.0	0.0	0.00	0.00	0.00
4,440.0	0.00	0.00	4,440.0	0.0	0.0	0.0	0.00	0.00	0.00
4,480.0	0.00	0.00	4,480.0	0.0	0.0	0.0	0.00	0.00	0.00
4,520.0	0.00	0.00	4,520.0	0.0	0.0	0.0	0.00	0.00	0.00
4,560.0	0.00	0.00	4,560.0	0.0	0.0	0.0	0.00	0.00	0.00
4,600.0	0.00	0.00	4,600.0	0.0	0.0	0.0	0.00	0.00	0.00
4,640.0	0.00	0.00	4,640.0	0.0	0.0	0.0	0.00	0.00	0.00
4,680.0	0.00	0.00	4,680.0	0.0	0.0	0.0	0.00	0.00	0.00
4,720.0	0.00	0.00	4,720.0	0.0	0.0	0.0	0.00	0.00	0.00
4,760.0	0.00	0.00	4,760.0	0.0	0.0	0.0	0.00	0.00	0.00
4,800.0	0.00	0.00	4,800.0	0.0	0.0	0.0	0.00	0.00	0.00
4,840.0	0.00	0.00	4,840.0	0.0	0.0	0.0	0.00	0.00	0.00
4,880.0	0.00	0.00	4,880.0	0.0	0.0	0.0	0.00	0.00	0.00
4,920.0	0.00	0.00	4,920.0	0.0	0.0	0.0	0.00	0.00	0.00
4,960.0	0.00	0.00	4,960.0	0.0	0.0	0.0	0.00	0.00	0.00
5,000.0	0.00	0.00	5,000.0	0.0	0.0	0.0	0.00	0.00	0.00
5,040.0	0.00	0.00	5,040.0	0.0	0.0	0.0	0.00	0.00	0.00
5,080.0	0.00	0.00	5,080.0	0.0	0.0	0.0	0.00	0.00	0.00
5,120.0	0.00	0.00	5,120.0	0.0	0.0	0.0	0.00	0.00	0.00
5,160.0	0.00	0.00	5,160.0	0.0	0.0	0.0	0.00	0.00	0.00
5,200.0	0.00	0.00	5,200.0	0.0	0.0	0.0	0.00	0.00	0.00
5,240.0	0.00	0.00	5,240.0	0.0	0.0	0.0	0.00	0.00	0.00
5,280.0	0.00	0.00	5,280.0	0.0	0.0	0.0	0.00	0.00	0.00
5,320.0	0.00	0.00	5,320.0	0.0	0.0	0.0	0.00	0.00	0.00
5,360.0	0.00	0.00	5,360.0	0.0	0.0	0.0	0.00	0.00	0.00
5,400.0	0.00	0.00	5,400.0	0.0	0.0	0.0	0.00	0.00	0.00
5,440.0	0.00	0.00	5,440.0	0.0	0.0	0.0	0.00	0.00	0.00
5,480.0	0.00	0.00	5,480.0	0.0	0.0	0.0	0.00	0.00	0.00
5,520.0	0.00	0.00	5,520.0	0.0	0.0	0.0	0.00	0.00	0.00
5,560.0	0.00	0.00	5,560.0	0.0	0.0	0.0	0.00	0.00	0.00
5,600.0	0.00	0.00	5,600.0	0.0	0.0	0.0	0.00	0.00	0.00
5,640.0	0.00	0.00	5,640.0	0.0	0.0	0.0	0.00	0.00	0.00
5,680.0	0.00	0.00	5,680.0	0.0	0.0	0.0	0.00	0.00	0.00
5,720.0	0.00	0.00	5,720.0	0.0	0.0	0.0	0.00	0.00	0.00
5,760.0	0.00	0.00	5,760.0	0.0	0.0	0.0	0.00	0.00	0.00
5,800.0	0.00	0.00	5,800.0	0.0	0.0	0.0	0.00	0.00	0.00
5,840.0	0.00	0.00	5,840.0	0.0	0.0	0.0	0.00	0.00	0.00
5,880.0	0.00	0.00	5,880.0	0.0	0.0	0.0	0.00	0.00	0.00
5,920.0	0.00	0.00	5,920.0	0.0	0.0	0.0	0.00	0.00	0.00
5,924.1	0.00	0.00	5,924.1	0.0	0.0	0.0	0.00	0.00	0.00
KOP									
5,960.0	3.95	180.11	5,960.0	-1.2	0.0	1.2	10.99	10.99	0.00
6,000.0	8.35	180.11	5,999.7	-5.5	0.0	5.5	11.00	11.00	0.00
6,040.0	12.75	180.11	6,039.0	-12.8	0.0	12.8	11.00	11.00	0.00
6,080.0	17.15	180.11	6,077.7	-23.1	0.0	23.1	11.00	11.00	0.00
6,120.0	21.55	180.11	6,115.4	-36.4	-0.1	36.4	11.00	11.00	0.00
6,160.0	25.95	180.11	6,152.0	-52.5	-0.1	52.5	11.00	11.00	0.00
6,200.0	30.35	180.11	6,187.3	-71.4	-0.1	71.4	11.00	11.00	0.00
6,240.0	34.75	180.11	6,221.0	-92.9	-0.2	92.9	11.00	11.00	0.00
6,280.0	39.15	180.11	6,253.0	-116.9	-0.2	116.9	11.00	11.00	0.00

Database:	Landmark	Local Co-ordinate Reference:	Well Wildhorse #06-0634H
Company:	Whiting Oil & Gas	TVD Reference:	WELL @ 5201.5ft (Original Well Elev)
Project:	SEC.6-T9N-R59W	MD Reference:	WELL @ 5201.5ft (Original Well Elev)
Site:	Wildhorse #06-0634H Pad Sec.6-T9N-R59W	North Reference:	True
Well:	Wildhorse #06-0634H	Survey Calculation Method:	Minimum Curvature
Wellbore:	Wellbore #1		
Design:	Plan #1 (11-14-11)		

Planned Survey									
Measured Depth (ft)	Inclination (°)	Azimuth (°)	Vertical Depth (ft)	+N/-S (ft)	+E/-W (ft)	Vertical Section (ft)	Dogleg Rate (°/100ft)	Build Rate (°/100ft)	Turn Rate (°/100ft)
6,320.0	43.55	180.11	6,283.0	-143.3	-0.3	143.3	11.00	11.00	0.00
6,360.0	47.95	180.11	6,310.9	-172.0	-0.3	172.0	11.00	11.00	0.00
6,373.8	49.47	180.11	6,320.0	-182.4	-0.3	182.4	11.00	11.00	0.00
NIOBRARA									
6,400.0	52.35	180.11	6,336.5	-202.7	-0.4	202.7	11.00	11.00	0.00
6,440.0	56.75	180.11	6,359.7	-235.2	-0.4	235.2	11.00	11.00	0.00
6,480.0	61.15	180.11	6,380.3	-269.5	-0.5	269.5	11.00	11.00	0.00
6,520.0	65.55	180.11	6,398.3	-305.2	-0.6	305.2	11.00	11.00	0.00
6,560.0	69.95	180.11	6,413.4	-342.3	-0.6	342.3	11.00	11.00	0.00
6,600.0	74.35	180.11	6,425.7	-380.3	-0.7	380.3	11.00	11.00	0.00
6,640.0	78.75	180.11	6,435.0	-419.2	-0.8	419.2	11.00	11.00	0.00
6,680.0	83.15	180.11	6,441.3	-458.7	-0.9	458.7	11.00	11.00	0.00
6,720.0	87.55	180.11	6,444.5	-498.6	-0.9	498.6	11.00	11.00	0.00
6,742.3	90.00	180.11	6,445.0	-520.9	-1.0	520.9	11.00	11.00	0.00
End of Build - 7"									
6,760.0	90.00	180.11	6,445.0	-538.6	-1.0	538.6	0.01	0.01	0.00
6,800.0	90.00	180.11	6,445.0	-578.6	-1.1	578.6	0.00	0.00	0.00
6,840.0	90.00	180.11	6,445.0	-618.6	-1.2	618.6	0.00	0.00	0.00
6,880.0	90.00	180.11	6,445.0	-658.6	-1.2	658.6	0.00	0.00	0.00
6,920.0	90.00	180.11	6,445.0	-698.6	-1.3	698.6	0.00	0.00	0.00
6,960.0	90.00	180.11	6,445.0	-738.6	-1.4	738.6	0.00	0.00	0.00
7,000.0	90.00	180.11	6,445.0	-778.6	-1.5	778.6	0.00	0.00	0.00
7,040.0	90.00	180.11	6,445.0	-818.6	-1.5	818.6	0.00	0.00	0.00
7,080.0	90.00	180.11	6,445.0	-858.6	-1.6	858.6	0.00	0.00	0.00
7,120.0	90.00	180.11	6,445.0	-898.6	-1.7	898.6	0.00	0.00	0.00
7,160.0	90.00	180.11	6,445.0	-938.6	-1.8	938.6	0.00	0.00	0.00
7,200.0	90.00	180.11	6,445.0	-978.6	-1.8	978.6	0.00	0.00	0.00
7,240.0	90.00	180.11	6,445.0	-1,018.6	-1.9	1,018.6	0.00	0.00	0.00
7,280.0	90.00	180.11	6,445.0	-1,058.6	-2.0	1,058.6	0.00	0.00	0.00
7,320.0	90.00	180.11	6,445.0	-1,098.6	-2.0	1,098.6	0.00	0.00	0.00
7,360.0	90.00	180.11	6,445.0	-1,138.6	-2.1	1,138.6	0.00	0.00	0.00
7,400.0	90.00	180.11	6,445.0	-1,178.6	-2.2	1,178.6	0.00	0.00	0.00
7,440.0	90.00	180.11	6,445.0	-1,218.6	-2.3	1,218.6	0.00	0.00	0.00
7,480.0	90.00	180.11	6,445.0	-1,258.6	-2.3	1,258.6	0.00	0.00	0.00
7,520.0	90.00	180.11	6,445.0	-1,298.6	-2.4	1,298.6	0.00	0.00	0.00
7,560.0	90.00	180.11	6,445.0	-1,338.6	-2.5	1,338.6	0.00	0.00	0.00
7,600.0	90.00	180.11	6,445.0	-1,378.6	-2.6	1,378.6	0.00	0.00	0.00
7,640.0	90.00	180.11	6,445.0	-1,418.6	-2.6	1,418.6	0.00	0.00	0.00
7,680.0	90.00	180.11	6,445.0	-1,458.6	-2.7	1,458.6	0.00	0.00	0.00
7,720.0	90.00	180.11	6,445.0	-1,498.6	-2.8	1,498.6	0.00	0.00	0.00
7,760.0	90.00	180.11	6,445.0	-1,538.6	-2.9	1,538.6	0.00	0.00	0.00
7,800.0	90.00	180.11	6,445.0	-1,578.6	-2.9	1,578.6	0.00	0.00	0.00
7,840.0	90.00	180.11	6,445.0	-1,618.6	-3.0	1,618.6	0.00	0.00	0.00
7,880.0	90.00	180.11	6,445.0	-1,658.6	-3.1	1,658.6	0.00	0.00	0.00
7,920.0	90.00	180.11	6,445.0	-1,698.6	-3.2	1,698.6	0.00	0.00	0.00
7,960.0	90.00	180.11	6,445.0	-1,738.6	-3.2	1,738.6	0.00	0.00	0.00
8,000.0	90.00	180.11	6,445.0	-1,778.6	-3.3	1,778.6	0.00	0.00	0.00
8,040.0	90.00	180.11	6,445.0	-1,818.6	-3.4	1,818.6	0.00	0.00	0.00
8,080.0	90.00	180.11	6,445.0	-1,858.6	-3.5	1,858.6	0.00	0.00	0.00
8,120.0	90.00	180.11	6,445.0	-1,898.6	-3.5	1,898.6	0.00	0.00	0.00
8,160.0	90.00	180.11	6,445.0	-1,938.6	-3.6	1,938.6	0.00	0.00	0.00
8,200.0	90.00	180.11	6,445.0	-1,978.6	-3.7	1,978.6	0.00	0.00	0.00
8,240.0	90.00	180.11	6,445.0	-2,018.6	-3.8	2,018.6	0.00	0.00	0.00

Database:	Landmark	Local Co-ordinate Reference:	Well Wildhorse #06-0634H
Company:	Whiting Oil & Gas	TVD Reference:	WELL @ 5201.5ft (Original Well Elev)
Project:	SEC.6-T9N-R59W	MD Reference:	WELL @ 5201.5ft (Original Well Elev)
Site:	Wildhorse #06-0634H Pad Sec.6-T9N-R59W	North Reference:	True
Well:	Wildhorse #06-0634H	Survey Calculation Method:	Minimum Curvature
Wellbore:	Wellbore #1		
Design:	Plan #1 (11-14-11)		

Planned Survey									
Measured Depth (ft)	Inclination (°)	Azimuth (°)	Vertical Depth (ft)	+N/-S (ft)	+E/-W (ft)	Vertical Section (ft)	Dogleg Rate (°/100ft)	Build Rate (°/100ft)	Turn Rate (°/100ft)
8,280.0	90.00	180.11	6,445.0	-2,058.6	-3.8	2,058.6	0.00	0.00	0.00
8,320.0	90.00	180.11	6,445.0	-2,098.6	-3.9	2,098.6	0.00	0.00	0.00
8,360.0	90.00	180.11	6,445.0	-2,138.6	-4.0	2,138.6	0.00	0.00	0.00
8,400.0	90.00	180.11	6,445.0	-2,178.6	-4.1	2,178.6	0.00	0.00	0.00
8,440.0	90.00	180.11	6,445.0	-2,218.6	-4.1	2,218.6	0.00	0.00	0.00
8,480.0	90.00	180.11	6,445.0	-2,258.6	-4.2	2,258.6	0.00	0.00	0.00
8,520.0	90.00	180.11	6,445.0	-2,298.6	-4.3	2,298.6	0.00	0.00	0.00
8,560.0	90.00	180.11	6,445.0	-2,338.6	-4.4	2,338.6	0.00	0.00	0.00
8,600.0	90.00	180.11	6,445.0	-2,378.6	-4.4	2,378.6	0.00	0.00	0.00
8,640.0	90.00	180.11	6,445.0	-2,418.6	-4.5	2,418.6	0.00	0.00	0.00
8,680.0	90.00	180.11	6,445.0	-2,458.6	-4.6	2,458.6	0.00	0.00	0.00
8,720.0	90.00	180.11	6,445.0	-2,498.6	-4.7	2,498.6	0.00	0.00	0.00
8,760.0	90.00	180.11	6,445.0	-2,538.6	-4.7	2,538.6	0.00	0.00	0.00
8,800.0	90.00	180.11	6,445.0	-2,578.6	-4.8	2,578.6	0.00	0.00	0.00
8,840.0	90.00	180.11	6,445.0	-2,618.6	-4.9	2,618.6	0.00	0.00	0.00
8,880.0	90.00	180.11	6,445.0	-2,658.6	-5.0	2,658.6	0.00	0.00	0.00
8,920.0	90.00	180.11	6,445.0	-2,698.6	-5.0	2,698.6	0.00	0.00	0.00
8,960.0	90.00	180.11	6,445.0	-2,738.6	-5.1	2,738.6	0.00	0.00	0.00
9,000.0	90.00	180.11	6,445.0	-2,778.6	-5.2	2,778.6	0.00	0.00	0.00
9,040.0	90.00	180.11	6,445.0	-2,818.6	-5.3	2,818.6	0.00	0.00	0.00
9,080.0	90.00	180.11	6,445.0	-2,858.6	-5.3	2,858.6	0.00	0.00	0.00
9,120.0	90.00	180.11	6,445.0	-2,898.6	-5.4	2,898.6	0.00	0.00	0.00
9,160.0	90.00	180.11	6,445.0	-2,938.6	-5.5	2,938.6	0.00	0.00	0.00
9,200.0	90.00	180.11	6,445.0	-2,978.6	-5.6	2,978.6	0.00	0.00	0.00
9,240.0	90.00	180.11	6,445.0	-3,018.6	-5.6	3,018.6	0.00	0.00	0.00
9,280.0	90.00	180.11	6,445.0	-3,058.6	-5.7	3,058.6	0.00	0.00	0.00
9,320.0	90.00	180.11	6,445.0	-3,098.6	-5.8	3,098.6	0.00	0.00	0.00
9,360.0	90.00	180.11	6,445.0	-3,138.6	-5.9	3,138.6	0.00	0.00	0.00
9,400.0	90.00	180.11	6,445.0	-3,178.6	-5.9	3,178.6	0.00	0.00	0.00
9,440.0	90.00	180.11	6,445.0	-3,218.6	-6.0	3,218.6	0.00	0.00	0.00
9,480.0	90.00	180.11	6,445.0	-3,258.6	-6.1	3,258.6	0.00	0.00	0.00
9,520.0	90.00	180.11	6,445.0	-3,298.6	-6.2	3,298.6	0.00	0.00	0.00
9,560.0	90.00	180.11	6,445.0	-3,338.6	-6.2	3,338.6	0.00	0.00	0.00
9,600.0	90.00	180.11	6,445.0	-3,378.6	-6.3	3,378.6	0.00	0.00	0.00
9,640.0	90.00	180.11	6,445.0	-3,418.6	-6.4	3,418.6	0.00	0.00	0.00
9,680.0	90.00	180.11	6,445.0	-3,458.6	-6.4	3,458.6	0.00	0.00	0.00
9,720.0	90.00	180.11	6,445.0	-3,498.6	-6.5	3,498.6	0.00	0.00	0.00
9,760.0	90.00	180.11	6,445.0	-3,538.6	-6.6	3,538.6	0.00	0.00	0.00
9,800.0	90.00	180.11	6,445.0	-3,578.6	-6.7	3,578.6	0.00	0.00	0.00
9,840.0	90.00	180.11	6,445.0	-3,618.6	-6.7	3,618.6	0.00	0.00	0.00
9,880.0	90.00	180.11	6,445.0	-3,658.6	-6.8	3,658.6	0.00	0.00	0.00
9,920.0	90.00	180.11	6,445.0	-3,698.6	-6.9	3,698.6	0.00	0.00	0.00
9,960.0	90.00	180.11	6,445.0	-3,738.6	-7.0	3,738.6	0.00	0.00	0.00
10,000.0	90.00	180.11	6,445.0	-3,778.6	-7.0	3,778.6	0.00	0.00	0.00
10,040.0	90.00	180.11	6,445.0	-3,818.6	-7.1	3,818.6	0.00	0.00	0.00
10,080.0	90.00	180.11	6,445.0	-3,858.6	-7.2	3,858.6	0.00	0.00	0.00
10,120.0	90.00	180.11	6,445.0	-3,898.6	-7.3	3,898.6	0.00	0.00	0.00
10,160.0	90.00	180.11	6,445.0	-3,938.6	-7.3	3,938.6	0.00	0.00	0.00
10,200.0	90.00	180.11	6,445.0	-3,978.6	-7.4	3,978.6	0.00	0.00	0.00
10,240.0	90.00	180.11	6,445.0	-4,018.6	-7.5	4,018.6	0.00	0.00	0.00
10,280.0	90.00	180.11	6,445.0	-4,058.6	-7.6	4,058.6	0.00	0.00	0.00
10,320.0	90.00	180.11	6,445.0	-4,098.6	-7.6	4,098.6	0.00	0.00	0.00
10,360.0	90.00	180.11	6,445.0	-4,138.6	-7.7	4,138.6	0.00	0.00	0.00
10,380.0	90.00	180.11	6,445.0	-4,158.5	-7.8	4,158.5	0.00	0.00	0.00

Database:	Landmark	Local Co-ordinate Reference:	Well Wildhorse #06-0634H
Company:	Whiting Oil & Gas	TVD Reference:	WELL @ 5201.5ft (Original Well Elev)
Project:	SEC.6-T9N-R59W	MD Reference:	WELL @ 5201.5ft (Original Well Elev)
Site:	Wildhorse #06-0634H Pad Sec.6-T9N-R59W	North Reference:	True
Well:	Wildhorse #06-0634H	Survey Calculation Method:	Minimum Curvature
Wellbore:	Wellbore #1		
Design:	Plan #1 (11-14-11)		

Planned Survey										
Measured Depth (ft)	Inclination (°)	Azimuth (°)	Vertical Depth (ft)	+N/-S (ft)	+E/-W (ft)	Vertical Section (ft)	Dogleg Rate (°/100ft)	Build Rate (°/100ft)	Turn Rate (°/100ft)	
TARGET BHL 660'FSL & 1942'FEL										

Targets										
Target Name	- hit/miss target	Dip Angle (°)	Dip Dir. (°)	TVD (ft)	+N/-S (ft)	+E/-W (ft)	Northing (ft)	Easting (ft)	Latitude	Longitude
HARDLINE 660'FNL	- plan misses target center by 525.0ft at 1.0ft MD (1.0 TVD, 0.0 N, 0.0 E)	0.00	0.00	1.0	-340.0	-400.0	1,532,143.06	3,409,793.92	40.784731	-104.020155
- Polygon										
Point 1				1.0	0.0	0.0	1,532,143.06	3,409,793.92		
Point 2				1.0	0.0	800.0	1,532,156.43	3,410,593.81		
TARGET BHL 660'FS	- plan hits target center	0.00	0.00	6,445.0	-4,158.5	-7.8	1,528,331.63	3,410,249.89	40.774250	-104.018739
- Point										
HARDLINE 660'FSL	- plan misses target center by 4178.4ft at 1.0ft MD (1.0 TVD, 0.0 N, 0.0 E)	0.00	0.00	1.0	-4,158.5	-407.8	1,528,324.97	3,409,849.90	40.774250	-104.020183
- Polygon										
Point 1				1.0	0.0	0.0	1,528,324.97	3,409,849.90		
Point 2				1.0	0.0	800.0	1,528,338.33	3,410,649.79		

Casing Points					
Measured Depth (ft)	Vertical Depth (ft)	Name	Casing Diameter (")	Hole Diameter (")	
6,742.3	6,445.0	7"	7	7-1/2	

Formations					
Measured Depth (ft)	Vertical Depth (ft)	Name	Lithology	Dip (°)	Dip Direction (°)
6,373.8	6,320.0	NIOBRARA		0.00	

Plan Annotations					
Measured Depth (ft)	Vertical Depth (ft)	Local Coordinates +N/-S (ft)	+E/-W (ft)	Comment	
5,924.1	5,924.1	0.0	0.0	KOP	
6,742.3	6,445.0	-520.9	-1.0	End of Build	