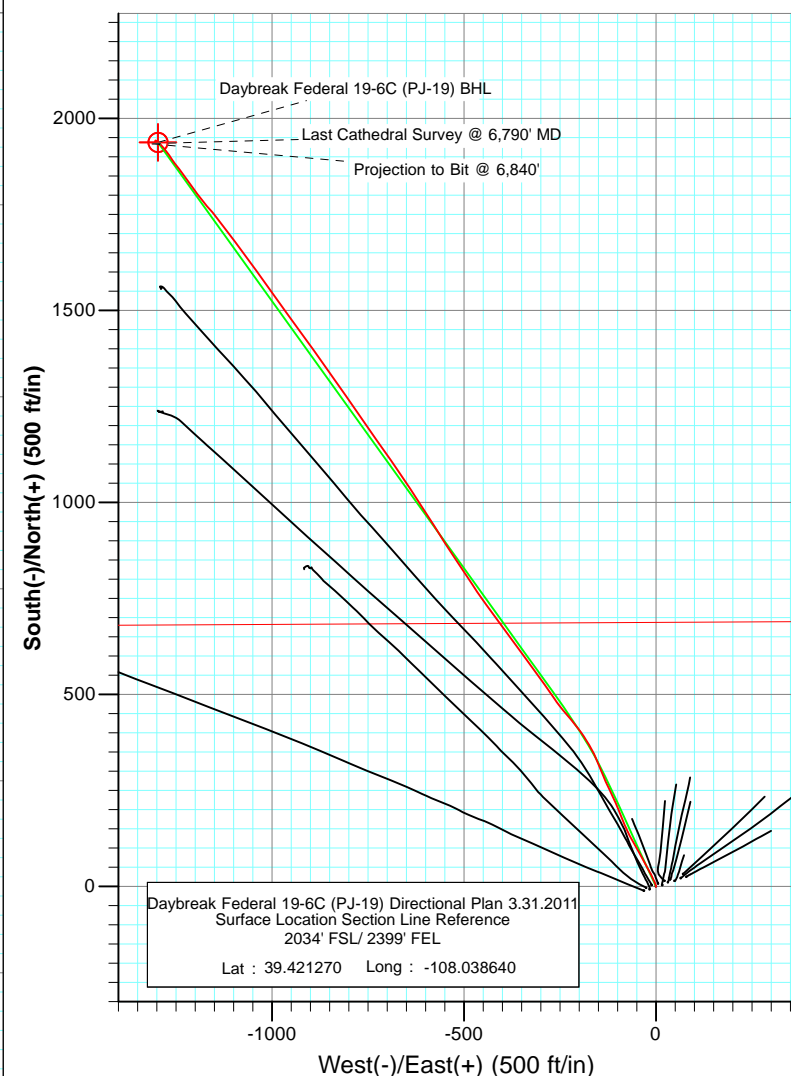
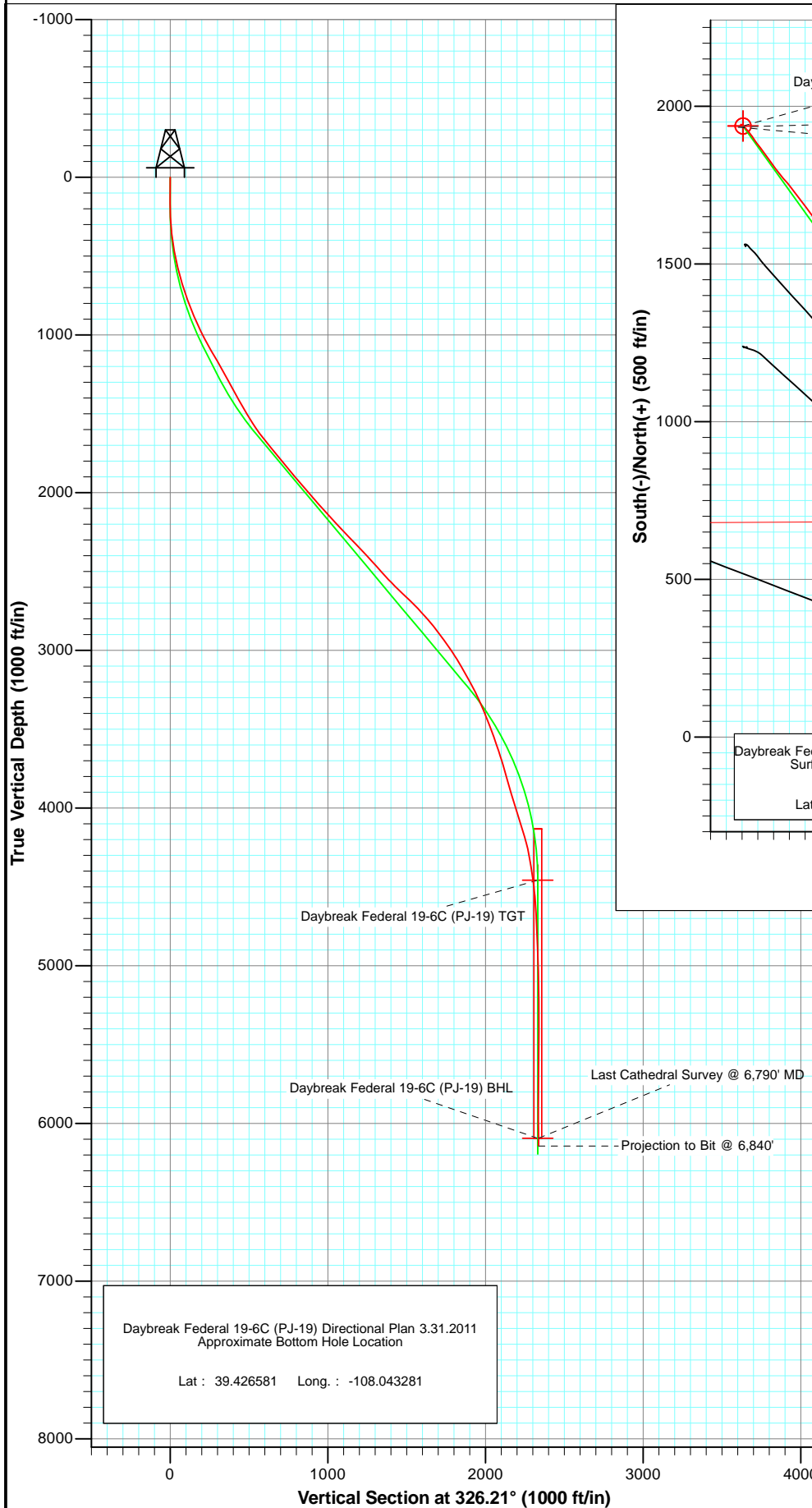




Project: S. Piceance (Parachute)  
 Site: NWSE S19-T7S-R95W (PJ-19 Pad)  
 Well: Daybreak Federal 19-6C (PJ-19) Directional Plan 3.31.2011  
 Wellbore: DD  
 Plan: FINAL



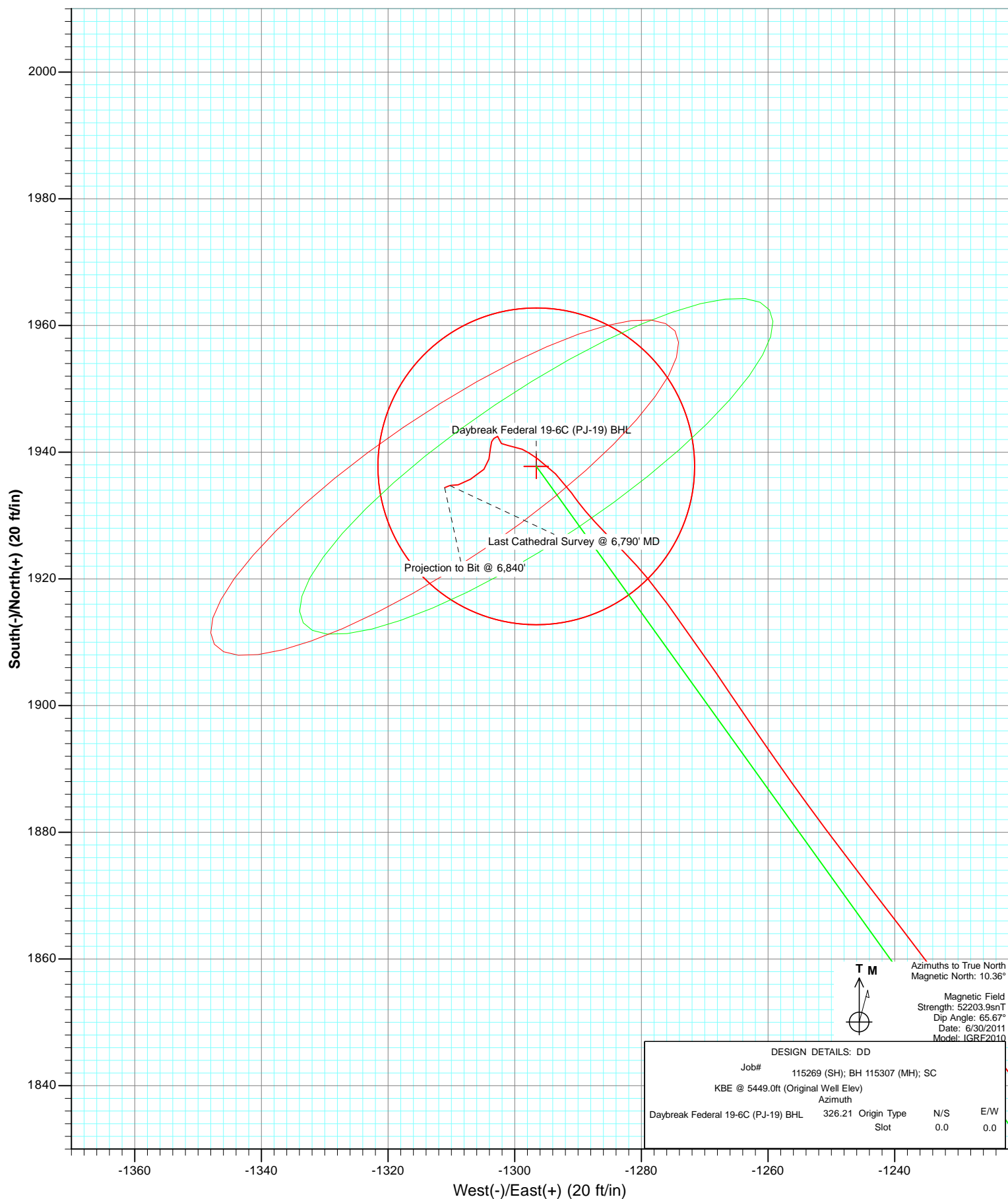
Azimuths to True North  
 Magnetic North: 10.36°

Magnetic Field  
 Strength: 52203.9nT  
 Dip Angle: 65.67°  
 Date: 6/30/2011  
 Model: IGRF2010

DESIGN DETAILS: DD				
Job#	115269 (SH); BH 115307 (MH); SC			
KBE @ 5449.0ft (Original Well Elev)				
Azimuth	326.21	Origin Type	N/S	E/W
Daybreak Federal 19-6C (PJ-19) BHL	Slot	0.0	0.0	

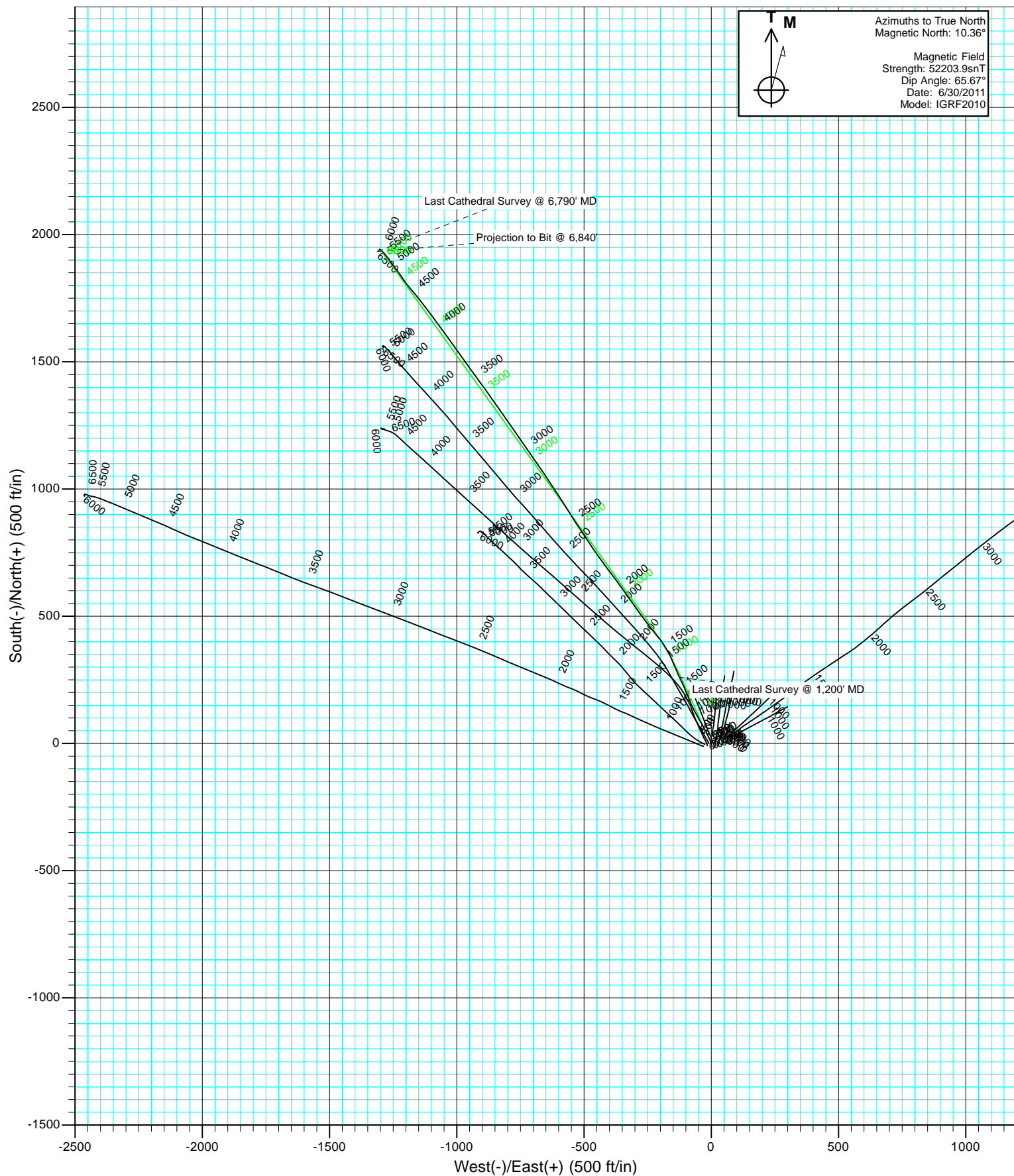


Project: S. Piceance (Parachute)  
Site: NWSE S19-T7S-R95W (PJ-19 Pad)  
Well: Daybreak Federal 19-6C (PJ-19) Directional Plan 3.31.2011  
Wellbore: DD  
Plan: FINAL





Project: S. Piceance (Parachute)  
Site: NWSE S19-T7S-R95W (PJ-19 Pad)  
Well: Daybreak Federal 19-6C (PJ-19) Directional Plan 3.31.2011  
Wellbore: DD  
Design: FINAL



# Cathedral Energy Services

## Survey Report

<b>Company:</b>	EnCana Oil & Gas (USA) Inc	<b>Local Co-ordinate Reference:</b>	Well Daybreak Federal 19-6C (PJ-19) Directional
<b>Project:</b>	S. Piceance (Parachute)	<b>TVD Reference:</b>	KBE @ 5449.0ft (Original Well Elev)
<b>Site:</b>	NWSE S19-T7S-R95W (PJ-19 Pad)	<b>MD Reference:</b>	KBE @ 5449.0ft (Original Well Elev)
<b>Well:</b>	Daybreak Federal 19-6C (PJ-19) Directional	<b>North Reference:</b>	True
<b>Wellbore:</b>	DD	<b>Survey Calculation Method:</b>	Minimum Curvature
<b>Design:</b>	DD	<b>Database:</b>	USA EDM 5000 Multi Users DB

<b>Project</b>	S. Piceance (Parachute), Garfield County, CO		
<b>Map System:</b>	US State Plane 1983	<b>System Datum:</b>	Mean Sea Level
<b>Geo Datum:</b>	North American Datum 1983		
<b>Map Zone:</b>	Colorado Central Zone		

<b>Site</b>	NWSE S19-T7S-R95W (PJ-19 Pad)			
<b>Site Position:</b>		<b>Northing:</b>	1,588,373.67 ft	<b>Latitude:</b> 39.421340
<b>From:</b>	Lat/Long	<b>Easting:</b>	2,283,011.65 ft	<b>Longitude:</b> -108.038360
<b>Position Uncertainty:</b>	0.0 ft	<b>Slot Radius:</b>	13.200 in	<b>Grid Convergence:</b> -1.60 °

<b>Well</b>	Daybreak Federal 19-6C (PJ-19) Directional Plan 3.31.2011			
<b>Well Position</b>	<b>+N/-S</b>	0.0 ft	<b>Northing:</b>	1,588,350.37 ft
	<b>+E/-W</b>	0.0 ft	<b>Easting:</b>	2,282,931.87 ft
<b>Position Uncertainty</b>		0.0 ft	<b>Wellhead Elevation:</b>	ft
			<b>Ground Level:</b>	5,427.0 ft

<b>Wellbore</b>	DD				
<b>Magnetics</b>	<b>Model Name</b>	<b>Sample Date</b>	<b>Declination (°)</b>	<b>Dip Angle (°)</b>	<b>Field Strength (nT)</b>
	IGRF2010	6/30/2011	10.36	65.67	52,204

<b>Design</b>	DD			
<b>Audit Notes:</b>				
<b>Version:</b>	1.0	<b>Phase:</b>	ACTUAL	<b>Tie On Depth:</b> 0.0
<b>Vertical Section:</b>	<b>Depth From (TVD) (ft)</b>	<b>+N/-S (ft)</b>	<b>+E/-W (ft)</b>	<b>Direction (°)</b>
	0.0	0.0	0.0	326.21

<b>Survey Program</b>	<b>Date</b>	8/11/2011		
<b>From (ft)</b>	<b>To (ft)</b>	<b>Survey (Wellbore)</b>	<b>Tool Name</b>	<b>Description</b>
139.0	1,200.0	Survey #1 (DD)	MWD	Geolink MWD
1,258.0	6,840.0	Survey #2 (DD)	MWD	Geolink MWD

<b>Survey</b>									
<b>Measured Depth (ft)</b>	<b>Inclination (°)</b>	<b>Azimuth (°)</b>	<b>Vertical Depth (ft)</b>	<b>+N/-S (ft)</b>	<b>+E/-W (ft)</b>	<b>Vertical Section (ft)</b>	<b>Dogleg Rate (°/100ft)</b>	<b>Build Rate (°/100ft)</b>	<b>Formations / Comments</b>
0.0	0.00	0.00	0.0	0.0	0.0	0.0	0.00	0.00	
139.0	0.20	167.70	139.0	-0.2	0.1	-0.2	0.14	0.14	
169.0	0.20	356.60	169.0	-0.2	0.1	-0.2	1.33	0.00	
200.0	1.10	355.50	200.0	0.1	0.0	0.1	2.90	2.90	
231.0	2.20	344.70	231.0	1.0	-0.1	0.9	3.67	3.55	
262.0	3.10	350.10	262.0	2.4	-0.4	2.2	3.01	2.90	
293.0	3.80	348.30	292.9	4.2	-0.8	3.9	2.28	2.26	
324.0	4.70	337.40	323.8	6.4	-1.5	6.1	3.89	2.90	
354.0	6.20	336.70	353.7	9.0	-2.6	8.9	5.00	5.00	
385.0	7.30	340.10	384.5	12.4	-3.9	12.5	3.77	3.55	
416.0	8.50	336.70	415.2	16.4	-5.5	16.7	4.15	3.87	
447.0	9.60	331.30	445.8	20.7	-7.7	21.5	4.48	3.55	

# Cathedral Energy Services

## Survey Report

<b>Company:</b>	EnCana Oil & Gas (USA) Inc	<b>Local Co-ordinate Reference:</b>	Well Daybreak Federal 19-6C (PJ-19) Directional
<b>Project:</b>	S. Piceance (Parachute)	<b>TVD Reference:</b>	KBE @ 5449.0ft (Original Well Elev)
<b>Site:</b>	NWSE S19-T7S-R95W (PJ-19 Pad)	<b>MD Reference:</b>	KBE @ 5449.0ft (Original Well Elev)
<b>Well:</b>	Daybreak Federal 19-6C (PJ-19) Directional	<b>North Reference:</b>	True
<b>Wellbore:</b>	Open 3.31.2011	<b>Survey Calculation Method:</b>	Minimum Curvature
<b>Design:</b>	DD	<b>Database:</b>	USA EDM 5000 Multi Users DB

Survey									
Measured Depth (ft)	Inclination (°)	Azimuth (°)	Vertical Depth (ft)	+N/-S (ft)	+E/-W (ft)	Vertical Section (ft)	Dogleg Rate (°/100ft)	Build Rate (°/100ft)	Formations / Comments
478.0	11.10	336.60	476.3	25.7	-10.1	27.0	5.73	4.84	
508.0	11.70	335.50	505.7	31.2	-12.5	32.9	2.13	2.00	
539.0	12.70	328.80	536.0	36.9	-15.6	39.4	5.59	3.23	
570.0	13.60	331.20	566.2	43.0	-19.1	46.4	3.40	2.90	
600.0	14.70	329.60	595.3	49.4	-22.7	53.7	3.89	3.67	
631.0	15.40	333.80	625.2	56.5	-26.5	61.7	4.18	2.26	
662.0	16.10	332.00	655.0	64.0	-30.4	70.1	2.75	2.26	
692.0	17.10	332.20	683.8	71.6	-34.4	78.6	3.34	3.33	
722.0	17.80	331.90	712.4	79.5	-38.6	87.5	2.35	2.33	
753.0	18.60	329.70	741.8	88.0	-43.3	97.2	3.40	2.58	
784.0	19.70	329.60	771.1	96.7	-48.5	107.3	3.55	3.55	
815.0	20.40	330.50	800.3	105.9	-53.8	117.9	2.47	2.26	
846.0	21.60	330.70	829.2	115.6	-59.2	129.0	3.88	3.87	
877.0	22.40	331.20	857.9	125.8	-64.8	140.6	2.65	2.58	
969.0	25.40	337.80	942.1	159.4	-80.8	177.4	4.36	3.26	
1,062.0	28.30	337.60	1,025.0	198.3	-96.7	218.6	3.12	3.12	
1,154.0	30.10	334.60	1,105.3	239.3	-114.9	262.8	2.52	1.96	
1,200.0	30.10	335.20	1,145.1	260.2	-124.7	285.6	0.65	0.00	Last Cathedral Survey @ 1,200' MD
1,258.0	30.23	337.65	1,195.3	286.9	-136.3	314.3	2.13	0.22	
1,354.0	29.88	336.51	1,278.4	331.2	-155.1	361.5	0.70	-0.36	
1,448.0	28.30	329.39	1,360.5	371.8	-175.8	406.8	4.05	-1.68	
1,543.0	29.36	322.45	1,443.8	409.7	-201.4	452.5	3.69	1.12	
1,639.0	31.68	319.64	1,526.5	447.6	-232.1	501.0	2.84	2.42	
1,735.0	35.20	324.56	1,606.6	489.3	-264.5	553.8	4.63	3.67	
1,831.0	38.85	325.09	1,683.2	536.6	-297.8	611.6	3.82	3.80	
1,926.0	40.96	323.86	1,756.1	586.2	-333.2	672.5	2.37	2.22	
2,021.0	39.11	322.98	1,828.8	635.3	-369.6	733.5	2.04	-1.95	
2,116.0	39.68	324.12	1,902.2	683.7	-405.4	793.7	0.97	0.60	
2,212.0	40.61	323.77	1,975.6	733.8	-441.8	855.6	1.00	0.97	
2,307.0	41.66	326.67	2,047.2	785.1	-477.5	918.0	2.29	1.11	
2,402.0	41.70	326.23	2,118.1	837.8	-512.4	981.2	0.31	0.04	
2,498.0	43.15	327.37	2,189.0	892.0	-547.8	1,046.0	1.71	1.51	
2,593.0	44.08	327.72	2,257.8	947.3	-583.0	1,111.5	1.01	0.98	
2,688.0	43.11	327.37	2,326.6	1,002.5	-618.1	1,177.0	1.05	-1.02	
2,783.0	43.42	325.97	2,395.8	1,056.9	-653.9	1,242.1	1.06	0.33	
2,878.0	41.66	324.82	2,465.8	1,109.8	-690.4	1,306.3	2.03	-1.85	
2,972.0	42.67	325.35	2,535.4	1,161.5	-726.5	1,369.4	1.14	1.07	
3,067.0	46.05	325.26	2,603.3	1,216.1	-764.3	1,435.8	3.56	3.56	
3,163.0	46.27	324.65	2,669.8	1,272.8	-804.1	1,505.0	0.51	0.23	
3,258.0	43.77	325.09	2,737.0	1,327.8	-842.7	1,572.2	2.65	-2.63	
3,353.0	41.04	324.82	2,807.1	1,380.2	-879.5	1,636.2	2.88	-2.87	
3,448.0	36.74	323.68	2,881.1	1,428.6	-914.3	1,695.8	4.59	-4.53	
3,543.0	36.04	323.86	2,957.5	1,474.1	-947.6	1,752.1	0.75	-0.74	
3,638.0	32.43	324.65	3,036.1	1,517.5	-978.9	1,805.5	3.83	-3.80	
3,733.0	29.40	323.94	3,117.5	1,557.1	-1,007.3	1,854.3	3.21	-3.19	
3,828.0	29.49	324.91	3,200.3	1,595.1	-1,034.5	1,901.0	0.51	0.09	
3,923.0	25.09	323.06	3,284.7	1,630.3	-1,060.1	1,944.5	4.72	-4.63	
4,018.0	23.25	323.94	3,371.4	1,661.6	-1,083.2	1,983.3	1.97	-1.94	
4,113.0	21.01	323.24	3,459.3	1,690.4	-1,104.4	2,019.1	2.37	-2.36	
4,208.0	19.86	321.66	3,548.4	1,716.7	-1,124.6	2,052.2	1.34	-1.21	
4,303.0	18.11	323.59	3,638.2	1,741.2	-1,143.4	2,083.0	1.96	-1.84	
4,398.0	16.39	319.90	3,728.9	1,763.4	-1,160.8	2,111.1	2.15	-1.81	
4,493.0	16.48	318.49	3,820.0	1,783.7	-1,178.4	2,137.8	0.43	0.09	

# Cathedral Energy Services

## Survey Report

<b>Company:</b>	EnCana Oil & Gas (USA) Inc	<b>Local Co-ordinate Reference:</b>	Well Daybreak Federal 19-6C (PJ-19) Directional
<b>Project:</b>	S. Piceance (Parachute)	<b>TVD Reference:</b>	KBE @ 5449.0ft (Original Well Elev)
<b>Site:</b>	NWSE S19-T7S-R95W (PJ-19 Pad)	<b>MD Reference:</b>	KBE @ 5449.0ft (Original Well Elev)
<b>Well:</b>	Daybreak Federal 19-6C (PJ-19) Directional	<b>North Reference:</b>	True
<b>Wellbore:</b>	Open 3.31.2011	<b>Survey Calculation Method:</b>	Minimum Curvature
<b>Design:</b>	DD	<b>Database:</b>	USA EDM 5000 Multi Users DB

### Survey

Measured Depth (ft)	Inclination (°)	Azimuth (°)	Vertical Depth (ft)	+N/-S (ft)	+E/-W (ft)	Vertical Section (ft)	Dogleg Rate (°/100ft)	Build Rate (°/100ft)	Formations / Comments
4,588.0	15.78	323.24	3,911.3	1,804.2	-1,195.0	2,164.0	1.57	-0.74	
4,683.0	17.36	325.70	4,002.4	1,826.2	-1,210.8	2,191.1	1.82	1.66	
4,779.0	18.19	323.33	4,093.8	1,850.1	-1,227.8	2,220.4	1.15	0.86	
4,874.0	16.13	322.27	4,184.5	1,872.4	-1,244.7	2,248.4	2.19	-2.17	
4,970.0	12.13	325.17	4,277.6	1,891.2	-1,258.6	2,271.8	4.23	-4.17	
5,065.0	8.31	326.23	4,371.1	1,905.1	-1,268.2	2,288.6	4.03	-4.02	
5,160.0	7.95	323.24	4,465.1	1,916.1	-1,275.9	2,302.0	0.58	-0.38	
5,255.0	5.58	314.98	4,559.5	1,924.6	-1,283.1	2,313.1	2.69	-2.49	
5,350.0	3.12	318.93	4,654.2	1,929.8	-1,288.1	2,320.2	2.61	-2.59	
5,445.0	2.55	325.17	4,749.1	1,933.5	-1,291.0	2,324.9	0.68	-0.60	
5,541.0	2.24	313.92	4,845.0	1,936.6	-1,293.6	2,328.9	0.59	-0.32	
5,636.0	2.24	305.93	4,939.9	1,939.0	-1,296.4	2,332.4	0.33	0.00	
5,731.0	1.19	294.41	5,034.9	1,940.5	-1,298.8	2,335.0	1.16	-1.11	
5,826.0	1.67	278.33	5,129.9	1,941.1	-1,301.1	2,336.8	0.65	0.51	
5,921.0	0.75	5.60	5,224.8	1,941.9	-1,302.4	2,338.2	1.89	-0.97	
6,016.0	0.44	269.01	5,319.8	1,942.5	-1,302.7	2,338.9	0.96	-0.33	
6,112.0	0.48	216.65	5,415.8	1,942.2	-1,303.3	2,338.9	0.42	0.04	
6,207.0	0.26	205.47	5,510.8	1,941.7	-1,303.6	2,338.7	0.24	-0.23	
6,302.0	1.01	186.13	5,605.8	1,940.6	-1,303.8	2,337.9	0.81	0.79	
6,398.0	1.05	190.35	5,701.8	1,938.9	-1,304.1	2,336.7	0.09	0.04	
6,492.0	1.23	219.97	5,795.8	1,937.3	-1,304.9	2,335.8	0.65	0.19	
6,588.0	1.98	241.81	5,891.8	1,935.7	-1,307.0	2,335.6	0.99	0.78	
6,682.0	0.62	257.94	5,985.7	1,934.9	-1,308.9	2,336.0	1.48	-1.45	
6,776.0	0.75	271.21	6,079.7	1,934.8	-1,310.0	2,336.5	0.22	0.14	
6,790.0	1.01	248.99	6,093.7	1,934.7	-1,310.2	2,336.6	3.03	1.86	Last Cathedral Survey @ 6,790' MD
6,840.0	1.01	248.97	6,143.7	1,934.4	-1,311.0	2,336.8	0.00	0.00	Projection to Bit @ 6,840'

# Cathedral Energy Services

## Survey Report

<b>Company:</b>	EnCana Oil & Gas (USA) Inc	<b>Local Co-ordinate Reference:</b>	Well Daybreak Federal 19-6C (PJ-19) Directional
<b>Project:</b>	S. Piceance (Parachute)	<b>TVD Reference:</b>	KBE @ 5449.0ft (Original Well Elev)
<b>Site:</b>	NWSE S19-T7S-R95W (PJ-19 Pad)	<b>MD Reference:</b>	KBE @ 5449.0ft (Original Well Elev)
<b>Well:</b>	Daybreak Federal 19-6C (PJ-19) Directional	<b>North Reference:</b>	True
<b>Wellbore:</b>	Open 3.31.2011	<b>Survey Calculation Method:</b>	Minimum Curvature
<b>Design:</b>	DD	<b>Database:</b>	USA EDM 5000 Multi Users DB

Targets									
Target Name									
- hit/miss target	Dip Angle	Dip Dir.	TVD	+N/-S	+E/-W	Northing	Easting	Latitude	Longitude
- Shape	(°)	(°)	(ft)	(ft)	(ft)	(ft)	(ft)		
Interp @ 1067.1 (Daybreak)	0.00	0.00	1,067.1	189.1	-87.0	1,588,541.87	2,282,850.24	39.421789	-108.038948
- actual wellpath misses target center by 31.3ft at 1092.7ft MD (1052.0 TVD, 211.8 N, -102.4 E)									
- Point									
Daybreak Federal 19-6C	0.00	0.00	6,094.0	1,937.8	-1,296.6	1,590,323.61	2,281,689.94	39.426590	-108.043230
- actual wellpath misses target center by 14.0ft at 6790.0ft MD (6093.7 TVD, 1934.7 N, -1310.2 E)									
- Circle (radius 25.0)									
Daybreak Federal 19-6C	0.00	0.00	4,457.0	1,937.8	-1,296.6	1,590,323.61	2,281,689.94	39.426590	-108.043230
- actual wellpath misses target center by 30.8ft at 5156.1ft MD (4461.3 TVD, 1915.7 N, -1275.6 E)									
- Point									

Design Annotations					
Measured Depth	Vertical Depth	Local Coordinates			
(ft)	(ft)	+N/-S	+E/-W	Comment	
(ft)	(ft)	(ft)	(ft)		
1,200.0	1,145.1	260.2	-124.7	Last Cathedral Survey @ 1,200' MD	
6,790.0	6,093.7	1,934.7	-1,310.2	Last Cathedral Survey @ 6,790' MD	
6,840.0	6,143.7	1,934.4	-1,311.0	Projection to Bit @ 6,840'	

Checked By: \_\_\_\_\_ Approved By: \_\_\_\_\_ Date: \_\_\_\_\_