

Whiting Oil & Gas

Well Name: **Wildhorse #06-0614H**

Surface Location: Wildhorse #06-0614H Pad Sec.6-T9N-R59W
North American Datum 1983 , US State Plane 1983 , Colorado Northern Zone

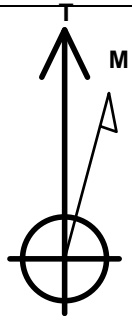
Ground Elevation: 5159.3

+N/-S	+E/-W	Northing	Easting	Latitude	Longitude	Slot
0.0	0.0	1532564.88	3407481.83	40.785994	-104.028478	

RKB Ensign Rig 14 - 15' WELL @ 5174.3ft (RKB Ensign Rig 14 - 15')

WELLBORE TARGET DETAILS (MAP CO-ORDINATES AND LAT/LONG)

Name	TVD	+N/-S	+E/-W	Northing	Easting	Latitude	Longitude	Shape
HARDLINE 660'FNL	1.0	-490.0	-400.0	1532068.31	3407090.01	40.784649	-104.029922	Polygon
HARDLINE 660'FSL	1.0	-4207.0	-290.0	1528353.65	3407261.68	40.774447	-104.029525	Polygon
BHL 660'FSL & 646'FWL	6434.0	-4207.0	110.0	1528360.31	3407661.58	40.774447	-104.028081	Point



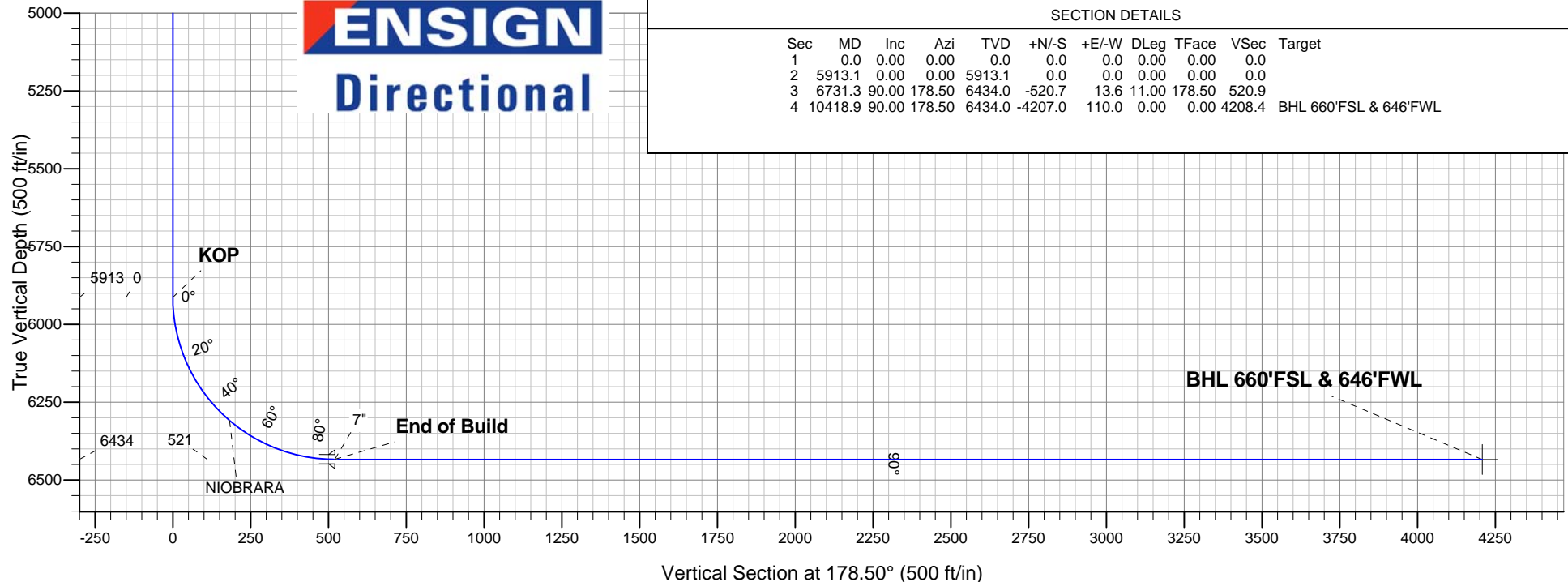
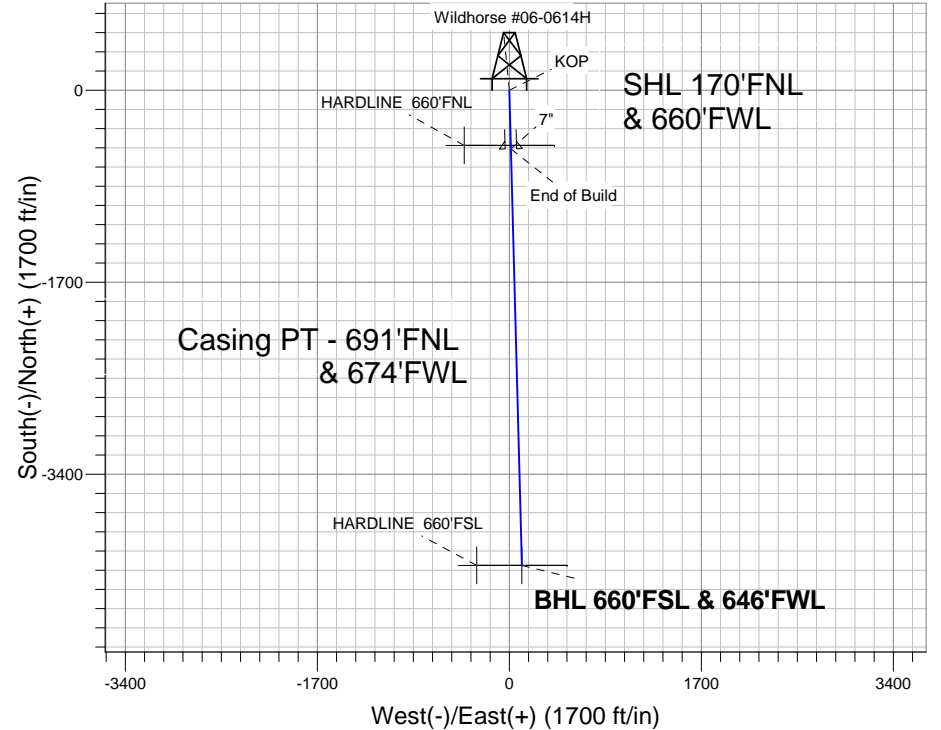
Azimuths to True North
Magnetic North: 8.44°

Magnetic Field
Strength: 53362.4snT
Dip Angle: 67.47°
Date: 11/15/2011
Model: IGRF2010

ANNOTATIONS

TVD	MD	Annotation
5913.1	5913.1	KOP
6434.0	6731.3	End of Build

Wildhorse #06-0614H Pad Sec.6-T9N-R59W
Wildhorse #06-0614H
Plan #1 (11-15-11)
10:24, November 15 2011



ENSIGN
Directional

SECTION DETAILS

Sec	MD	Inc	Azi	TVD	+N/-S	+E/-W	DLeg	TFace	VSec	Target
1	0.0	0.00	0.00	0.0	0.0	0.0	0.00	0.00	0.0	
2	5913.1	0.00	0.00	5913.1	0.0	0.0	0.00	0.00	0.0	
3	6731.3	90.00	178.50	6434.0	-520.7	13.6	11.00	178.50	520.9	
4	10418.9	90.00	178.50	6434.0	-4207.0	110.0	0.00	0.00	4208.4	BHL 660'FSL & 646'FWL



Whiting Oil & Gas

SEC.6-T9N-R59W

Wildhorse #06-0614H Pad Sec.6-T9N-R59W

Wildhorse #06-0614H

Wellbore #1

Plan: Plan #1 (11-15-11)

Standard Planning Report

15 November, 2011

Plan Sections										
Measured Depth (ft)	Inclination (°)	Azimuth (°)	Vertical Depth (ft)	+N/-S (ft)	+E/-W (ft)	Dogleg Rate (°/100ft)	Build Rate (°/100ft)	Turn Rate (°/100ft)	TFO (°)	Target
0.0	0.00	0.00	0.0	0.0	0.0	0.00	0.00	0.00	0.00	
5,913.1	0.00	0.00	5,913.1	0.0	0.0	0.00	0.00	0.00	0.00	
6,731.3	90.00	178.50	6,434.0	-520.7	13.6	11.00	11.00	0.00	178.50	
10,418.9	90.00	178.50	6,434.0	-4,207.0	110.0	0.00	0.00	0.00	0.00	BHL 660'FSL & 640'FSL

Database:	Landmark	Local Co-ordinate Reference:	Well Wildhorse #06-0614H
Company:	Whiting Oil & Gas	TVD Reference:	WELL @ 5174.3ft (RKB Ensign Rig 14 - 15')
Project:	SEC.6-T9N-R59W	MD Reference:	WELL @ 5174.3ft (RKB Ensign Rig 14 - 15')
Site:	Wildhorse #06-0614H Pad Sec.6-T9N-R59W	North Reference:	True
Well:	Wildhorse #06-0614H	Survey Calculation Method:	Minimum Curvature
Wellbore:	Wellbore #1		
Design:	Plan #1 (11-15-11)		

Planned Survey									
Measured Depth (ft)	Inclination (°)	Azimuth (°)	Vertical Depth (ft)	+N/-S (ft)	+E/-W (ft)	Vertical Section (ft)	Dogleg Rate (°/100ft)	Build Rate (°/100ft)	Turn Rate (°/100ft)
0.0	0.00	0.00	0.0	0.0	0.0	0.0	0.00	0.00	0.00
1.0	0.00	0.00	1.0	0.0	0.0	0.0	0.00	0.00	0.00
HARDLINE 660'FSL - HARDLINE 660'FNL									
40.0	0.00	0.00	40.0	0.0	0.0	0.0	0.00	0.00	0.00
80.0	0.00	0.00	80.0	0.0	0.0	0.0	0.00	0.00	0.00
120.0	0.00	0.00	120.0	0.0	0.0	0.0	0.00	0.00	0.00
160.0	0.00	0.00	160.0	0.0	0.0	0.0	0.00	0.00	0.00
200.0	0.00	0.00	200.0	0.0	0.0	0.0	0.00	0.00	0.00
240.0	0.00	0.00	240.0	0.0	0.0	0.0	0.00	0.00	0.00
280.0	0.00	0.00	280.0	0.0	0.0	0.0	0.00	0.00	0.00
320.0	0.00	0.00	320.0	0.0	0.0	0.0	0.00	0.00	0.00
360.0	0.00	0.00	360.0	0.0	0.0	0.0	0.00	0.00	0.00
400.0	0.00	0.00	400.0	0.0	0.0	0.0	0.00	0.00	0.00
440.0	0.00	0.00	440.0	0.0	0.0	0.0	0.00	0.00	0.00
480.0	0.00	0.00	480.0	0.0	0.0	0.0	0.00	0.00	0.00
520.0	0.00	0.00	520.0	0.0	0.0	0.0	0.00	0.00	0.00
560.0	0.00	0.00	560.0	0.0	0.0	0.0	0.00	0.00	0.00
600.0	0.00	0.00	600.0	0.0	0.0	0.0	0.00	0.00	0.00
640.0	0.00	0.00	640.0	0.0	0.0	0.0	0.00	0.00	0.00
680.0	0.00	0.00	680.0	0.0	0.0	0.0	0.00	0.00	0.00
720.0	0.00	0.00	720.0	0.0	0.0	0.0	0.00	0.00	0.00
760.0	0.00	0.00	760.0	0.0	0.0	0.0	0.00	0.00	0.00
800.0	0.00	0.00	800.0	0.0	0.0	0.0	0.00	0.00	0.00
840.0	0.00	0.00	840.0	0.0	0.0	0.0	0.00	0.00	0.00
880.0	0.00	0.00	880.0	0.0	0.0	0.0	0.00	0.00	0.00
920.0	0.00	0.00	920.0	0.0	0.0	0.0	0.00	0.00	0.00
960.0	0.00	0.00	960.0	0.0	0.0	0.0	0.00	0.00	0.00
1,000.0	0.00	0.00	1,000.0	0.0	0.0	0.0	0.00	0.00	0.00
1,040.0	0.00	0.00	1,040.0	0.0	0.0	0.0	0.00	0.00	0.00
1,080.0	0.00	0.00	1,080.0	0.0	0.0	0.0	0.00	0.00	0.00
1,120.0	0.00	0.00	1,120.0	0.0	0.0	0.0	0.00	0.00	0.00
1,160.0	0.00	0.00	1,160.0	0.0	0.0	0.0	0.00	0.00	0.00
1,200.0	0.00	0.00	1,200.0	0.0	0.0	0.0	0.00	0.00	0.00
1,240.0	0.00	0.00	1,240.0	0.0	0.0	0.0	0.00	0.00	0.00
1,280.0	0.00	0.00	1,280.0	0.0	0.0	0.0	0.00	0.00	0.00
1,320.0	0.00	0.00	1,320.0	0.0	0.0	0.0	0.00	0.00	0.00
1,360.0	0.00	0.00	1,360.0	0.0	0.0	0.0	0.00	0.00	0.00
1,400.0	0.00	0.00	1,400.0	0.0	0.0	0.0	0.00	0.00	0.00
1,440.0	0.00	0.00	1,440.0	0.0	0.0	0.0	0.00	0.00	0.00
1,480.0	0.00	0.00	1,480.0	0.0	0.0	0.0	0.00	0.00	0.00
1,520.0	0.00	0.00	1,520.0	0.0	0.0	0.0	0.00	0.00	0.00
1,560.0	0.00	0.00	1,560.0	0.0	0.0	0.0	0.00	0.00	0.00
1,600.0	0.00	0.00	1,600.0	0.0	0.0	0.0	0.00	0.00	0.00
1,640.0	0.00	0.00	1,640.0	0.0	0.0	0.0	0.00	0.00	0.00
1,680.0	0.00	0.00	1,680.0	0.0	0.0	0.0	0.00	0.00	0.00
1,720.0	0.00	0.00	1,720.0	0.0	0.0	0.0	0.00	0.00	0.00
1,760.0	0.00	0.00	1,760.0	0.0	0.0	0.0	0.00	0.00	0.00
1,800.0	0.00	0.00	1,800.0	0.0	0.0	0.0	0.00	0.00	0.00
1,840.0	0.00	0.00	1,840.0	0.0	0.0	0.0	0.00	0.00	0.00
1,880.0	0.00	0.00	1,880.0	0.0	0.0	0.0	0.00	0.00	0.00
1,920.0	0.00	0.00	1,920.0	0.0	0.0	0.0	0.00	0.00	0.00
1,960.0	0.00	0.00	1,960.0	0.0	0.0	0.0	0.00	0.00	0.00
2,000.0	0.00	0.00	2,000.0	0.0	0.0	0.0	0.00	0.00	0.00
2,040.0	0.00	0.00	2,040.0	0.0	0.0	0.0	0.00	0.00	0.00

Database:	Landmark	Local Co-ordinate Reference:	Well Wildhorse #06-0614H
Company:	Whiting Oil & Gas	TVD Reference:	WELL @ 5174.3ft (RKB Ensign Rig 14 - 15')
Project:	SEC.6-T9N-R59W	MD Reference:	WELL @ 5174.3ft (RKB Ensign Rig 14 - 15')
Site:	Wildhorse #06-0614H Pad Sec.6-T9N-R59W	North Reference:	True
Well:	Wildhorse #06-0614H	Survey Calculation Method:	Minimum Curvature
Wellbore:	Wellbore #1		
Design:	Plan #1 (11-15-11)		

Planned Survey									
Measured Depth (ft)	Inclination (°)	Azimuth (°)	Vertical Depth (ft)	+N/-S (ft)	+E/-W (ft)	Vertical Section (ft)	Dogleg Rate (°/100ft)	Build Rate (°/100ft)	Turn Rate (°/100ft)
2,080.0	0.00	0.00	2,080.0	0.0	0.0	0.0	0.00	0.00	0.00
2,120.0	0.00	0.00	2,120.0	0.0	0.0	0.0	0.00	0.00	0.00
2,160.0	0.00	0.00	2,160.0	0.0	0.0	0.0	0.00	0.00	0.00
2,200.0	0.00	0.00	2,200.0	0.0	0.0	0.0	0.00	0.00	0.00
2,240.0	0.00	0.00	2,240.0	0.0	0.0	0.0	0.00	0.00	0.00
2,280.0	0.00	0.00	2,280.0	0.0	0.0	0.0	0.00	0.00	0.00
2,320.0	0.00	0.00	2,320.0	0.0	0.0	0.0	0.00	0.00	0.00
2,360.0	0.00	0.00	2,360.0	0.0	0.0	0.0	0.00	0.00	0.00
2,400.0	0.00	0.00	2,400.0	0.0	0.0	0.0	0.00	0.00	0.00
2,440.0	0.00	0.00	2,440.0	0.0	0.0	0.0	0.00	0.00	0.00
2,480.0	0.00	0.00	2,480.0	0.0	0.0	0.0	0.00	0.00	0.00
2,520.0	0.00	0.00	2,520.0	0.0	0.0	0.0	0.00	0.00	0.00
2,560.0	0.00	0.00	2,560.0	0.0	0.0	0.0	0.00	0.00	0.00
2,600.0	0.00	0.00	2,600.0	0.0	0.0	0.0	0.00	0.00	0.00
2,640.0	0.00	0.00	2,640.0	0.0	0.0	0.0	0.00	0.00	0.00
2,680.0	0.00	0.00	2,680.0	0.0	0.0	0.0	0.00	0.00	0.00
2,720.0	0.00	0.00	2,720.0	0.0	0.0	0.0	0.00	0.00	0.00
2,760.0	0.00	0.00	2,760.0	0.0	0.0	0.0	0.00	0.00	0.00
2,800.0	0.00	0.00	2,800.0	0.0	0.0	0.0	0.00	0.00	0.00
2,840.0	0.00	0.00	2,840.0	0.0	0.0	0.0	0.00	0.00	0.00
2,880.0	0.00	0.00	2,880.0	0.0	0.0	0.0	0.00	0.00	0.00
2,920.0	0.00	0.00	2,920.0	0.0	0.0	0.0	0.00	0.00	0.00
2,960.0	0.00	0.00	2,960.0	0.0	0.0	0.0	0.00	0.00	0.00
3,000.0	0.00	0.00	3,000.0	0.0	0.0	0.0	0.00	0.00	0.00
3,040.0	0.00	0.00	3,040.0	0.0	0.0	0.0	0.00	0.00	0.00
3,080.0	0.00	0.00	3,080.0	0.0	0.0	0.0	0.00	0.00	0.00
3,120.0	0.00	0.00	3,120.0	0.0	0.0	0.0	0.00	0.00	0.00
3,160.0	0.00	0.00	3,160.0	0.0	0.0	0.0	0.00	0.00	0.00
3,200.0	0.00	0.00	3,200.0	0.0	0.0	0.0	0.00	0.00	0.00
3,240.0	0.00	0.00	3,240.0	0.0	0.0	0.0	0.00	0.00	0.00
3,280.0	0.00	0.00	3,280.0	0.0	0.0	0.0	0.00	0.00	0.00
3,320.0	0.00	0.00	3,320.0	0.0	0.0	0.0	0.00	0.00	0.00
3,360.0	0.00	0.00	3,360.0	0.0	0.0	0.0	0.00	0.00	0.00
3,400.0	0.00	0.00	3,400.0	0.0	0.0	0.0	0.00	0.00	0.00
3,440.0	0.00	0.00	3,440.0	0.0	0.0	0.0	0.00	0.00	0.00
3,480.0	0.00	0.00	3,480.0	0.0	0.0	0.0	0.00	0.00	0.00
3,520.0	0.00	0.00	3,520.0	0.0	0.0	0.0	0.00	0.00	0.00
3,560.0	0.00	0.00	3,560.0	0.0	0.0	0.0	0.00	0.00	0.00
3,600.0	0.00	0.00	3,600.0	0.0	0.0	0.0	0.00	0.00	0.00
3,640.0	0.00	0.00	3,640.0	0.0	0.0	0.0	0.00	0.00	0.00
3,680.0	0.00	0.00	3,680.0	0.0	0.0	0.0	0.00	0.00	0.00
3,720.0	0.00	0.00	3,720.0	0.0	0.0	0.0	0.00	0.00	0.00
3,760.0	0.00	0.00	3,760.0	0.0	0.0	0.0	0.00	0.00	0.00
3,800.0	0.00	0.00	3,800.0	0.0	0.0	0.0	0.00	0.00	0.00
3,840.0	0.00	0.00	3,840.0	0.0	0.0	0.0	0.00	0.00	0.00
3,880.0	0.00	0.00	3,880.0	0.0	0.0	0.0	0.00	0.00	0.00
3,920.0	0.00	0.00	3,920.0	0.0	0.0	0.0	0.00	0.00	0.00
3,960.0	0.00	0.00	3,960.0	0.0	0.0	0.0	0.00	0.00	0.00
4,000.0	0.00	0.00	4,000.0	0.0	0.0	0.0	0.00	0.00	0.00
4,040.0	0.00	0.00	4,040.0	0.0	0.0	0.0	0.00	0.00	0.00
4,080.0	0.00	0.00	4,080.0	0.0	0.0	0.0	0.00	0.00	0.00
4,120.0	0.00	0.00	4,120.0	0.0	0.0	0.0	0.00	0.00	0.00
4,160.0	0.00	0.00	4,160.0	0.0	0.0	0.0	0.00	0.00	0.00
4,200.0	0.00	0.00	4,200.0	0.0	0.0	0.0	0.00	0.00	0.00

Database:	Landmark	Local Co-ordinate Reference:	Well Wildhorse #06-0614H
Company:	Whiting Oil & Gas	TVD Reference:	WELL @ 5174.3ft (RKB Ensign Rig 14 - 15')
Project:	SEC.6-T9N-R59W	MD Reference:	WELL @ 5174.3ft (RKB Ensign Rig 14 - 15')
Site:	Wildhorse #06-0614H Pad Sec.6-T9N-R59W	North Reference:	True
Well:	Wildhorse #06-0614H	Survey Calculation Method:	Minimum Curvature
Wellbore:	Wellbore #1		
Design:	Plan #1 (11-15-11)		

Planned Survey									
Measured Depth (ft)	Inclination (°)	Azimuth (°)	Vertical Depth (ft)	+N/-S (ft)	+E/-W (ft)	Vertical Section (ft)	Dogleg Rate (°/100ft)	Build Rate (°/100ft)	Turn Rate (°/100ft)
4,240.0	0.00	0.00	4,240.0	0.0	0.0	0.0	0.00	0.00	0.00
4,280.0	0.00	0.00	4,280.0	0.0	0.0	0.0	0.00	0.00	0.00
4,320.0	0.00	0.00	4,320.0	0.0	0.0	0.0	0.00	0.00	0.00
4,360.0	0.00	0.00	4,360.0	0.0	0.0	0.0	0.00	0.00	0.00
4,400.0	0.00	0.00	4,400.0	0.0	0.0	0.0	0.00	0.00	0.00
4,440.0	0.00	0.00	4,440.0	0.0	0.0	0.0	0.00	0.00	0.00
4,480.0	0.00	0.00	4,480.0	0.0	0.0	0.0	0.00	0.00	0.00
4,520.0	0.00	0.00	4,520.0	0.0	0.0	0.0	0.00	0.00	0.00
4,560.0	0.00	0.00	4,560.0	0.0	0.0	0.0	0.00	0.00	0.00
4,600.0	0.00	0.00	4,600.0	0.0	0.0	0.0	0.00	0.00	0.00
4,640.0	0.00	0.00	4,640.0	0.0	0.0	0.0	0.00	0.00	0.00
4,680.0	0.00	0.00	4,680.0	0.0	0.0	0.0	0.00	0.00	0.00
4,720.0	0.00	0.00	4,720.0	0.0	0.0	0.0	0.00	0.00	0.00
4,760.0	0.00	0.00	4,760.0	0.0	0.0	0.0	0.00	0.00	0.00
4,800.0	0.00	0.00	4,800.0	0.0	0.0	0.0	0.00	0.00	0.00
4,840.0	0.00	0.00	4,840.0	0.0	0.0	0.0	0.00	0.00	0.00
4,880.0	0.00	0.00	4,880.0	0.0	0.0	0.0	0.00	0.00	0.00
4,920.0	0.00	0.00	4,920.0	0.0	0.0	0.0	0.00	0.00	0.00
4,960.0	0.00	0.00	4,960.0	0.0	0.0	0.0	0.00	0.00	0.00
5,000.0	0.00	0.00	5,000.0	0.0	0.0	0.0	0.00	0.00	0.00
5,040.0	0.00	0.00	5,040.0	0.0	0.0	0.0	0.00	0.00	0.00
5,080.0	0.00	0.00	5,080.0	0.0	0.0	0.0	0.00	0.00	0.00
5,120.0	0.00	0.00	5,120.0	0.0	0.0	0.0	0.00	0.00	0.00
5,160.0	0.00	0.00	5,160.0	0.0	0.0	0.0	0.00	0.00	0.00
5,200.0	0.00	0.00	5,200.0	0.0	0.0	0.0	0.00	0.00	0.00
5,240.0	0.00	0.00	5,240.0	0.0	0.0	0.0	0.00	0.00	0.00
5,280.0	0.00	0.00	5,280.0	0.0	0.0	0.0	0.00	0.00	0.00
5,320.0	0.00	0.00	5,320.0	0.0	0.0	0.0	0.00	0.00	0.00
5,360.0	0.00	0.00	5,360.0	0.0	0.0	0.0	0.00	0.00	0.00
5,400.0	0.00	0.00	5,400.0	0.0	0.0	0.0	0.00	0.00	0.00
5,440.0	0.00	0.00	5,440.0	0.0	0.0	0.0	0.00	0.00	0.00
5,480.0	0.00	0.00	5,480.0	0.0	0.0	0.0	0.00	0.00	0.00
5,520.0	0.00	0.00	5,520.0	0.0	0.0	0.0	0.00	0.00	0.00
5,560.0	0.00	0.00	5,560.0	0.0	0.0	0.0	0.00	0.00	0.00
5,600.0	0.00	0.00	5,600.0	0.0	0.0	0.0	0.00	0.00	0.00
5,640.0	0.00	0.00	5,640.0	0.0	0.0	0.0	0.00	0.00	0.00
5,680.0	0.00	0.00	5,680.0	0.0	0.0	0.0	0.00	0.00	0.00
5,720.0	0.00	0.00	5,720.0	0.0	0.0	0.0	0.00	0.00	0.00
5,760.0	0.00	0.00	5,760.0	0.0	0.0	0.0	0.00	0.00	0.00
5,800.0	0.00	0.00	5,800.0	0.0	0.0	0.0	0.00	0.00	0.00
5,840.0	0.00	0.00	5,840.0	0.0	0.0	0.0	0.00	0.00	0.00
5,880.0	0.00	0.00	5,880.0	0.0	0.0	0.0	0.00	0.00	0.00
5,913.1	0.00	0.00	5,913.1	0.0	0.0	0.0	0.00	0.00	0.00
KOP									
5,920.0	0.76	178.50	5,920.0	0.0	0.0	0.0	10.95	10.95	0.00
5,960.0	5.16	178.50	5,959.9	-2.1	0.1	2.1	11.00	11.00	0.00
6,000.0	9.56	178.50	5,999.6	-7.2	0.2	7.2	11.00	11.00	0.00
6,040.0	13.96	178.50	6,038.7	-15.4	0.4	15.4	11.00	11.00	0.00
6,080.0	18.36	178.50	6,077.2	-26.5	0.7	26.5	11.00	11.00	0.00
6,120.0	22.76	178.50	6,114.6	-40.5	1.1	40.5	11.00	11.00	0.00
6,160.0	27.16	178.50	6,150.9	-57.4	1.5	57.4	11.00	11.00	0.00
6,200.0	31.56	178.50	6,185.7	-77.0	2.0	77.0	11.00	11.00	0.00
6,240.0	35.96	178.50	6,219.0	-99.2	2.6	99.2	11.00	11.00	0.00
6,280.0	40.36	178.50	6,250.4	-123.9	3.2	123.9	11.00	11.00	0.00

Database:	Landmark	Local Co-ordinate Reference:	Well Wildhorse #06-0614H
Company:	Whiting Oil & Gas	TVD Reference:	WELL @ 5174.3ft (RKB Ensign Rig 14 - 15')
Project:	SEC.6-T9N-R59W	MD Reference:	WELL @ 5174.3ft (RKB Ensign Rig 14 - 15')
Site:	Wildhorse #06-0614H Pad Sec.6-T9N-R59W	North Reference:	True
Well:	Wildhorse #06-0614H	Survey Calculation Method:	Minimum Curvature
Wellbore:	Wellbore #1		
Design:	Plan #1 (11-15-11)		

Planned Survey									
Measured Depth (ft)	Inclination (°)	Azimuth (°)	Vertical Depth (ft)	+N/-S (ft)	+E/-W (ft)	Vertical Section (ft)	Dogleg Rate (°/100ft)	Build Rate (°/100ft)	Turn Rate (°/100ft)
6,320.0	44.76	178.50	6,279.9	-150.9	3.9	151.0	11.00	11.00	0.00
6,360.0	49.16	178.50	6,307.2	-180.2	4.7	180.2	11.00	11.00	0.00
6,362.8	49.47	178.50	6,309.0	-182.3	4.8	182.4	11.00	11.00	0.00
NIOBRARA									
6,400.0	53.56	178.50	6,332.1	-211.4	5.5	211.5	11.00	11.00	0.00
6,440.0	57.96	178.50	6,354.6	-244.4	6.4	244.5	11.00	11.00	0.00
6,480.0	62.36	178.50	6,374.5	-279.1	7.3	279.2	11.00	11.00	0.00
6,520.0	66.76	178.50	6,391.7	-315.2	8.2	315.3	11.00	11.00	0.00
6,560.0	71.16	178.50	6,406.1	-352.5	9.2	352.6	11.00	11.00	0.00
6,600.0	75.56	178.50	6,417.5	-390.8	10.2	390.9	11.00	11.00	0.00
6,640.0	79.96	178.50	6,426.0	-429.9	11.2	430.0	11.00	11.00	0.00
6,680.0	84.36	178.50	6,431.5	-469.5	12.3	469.6	11.00	11.00	0.00
6,720.0	88.76	178.50	6,433.9	-509.4	13.3	509.6	11.00	11.00	0.00
6,731.3	90.00	178.50	6,434.0	-520.7	13.6	520.9	11.00	11.00	0.00
End of Build - 7"									
6,760.0	90.00	178.50	6,434.0	-549.4	14.4	549.6	0.00	0.00	0.00
6,800.0	90.00	178.50	6,434.0	-589.4	15.4	589.6	0.00	0.00	0.00
6,840.0	90.00	178.50	6,434.0	-629.3	16.4	629.6	0.00	0.00	0.00
6,880.0	90.00	178.50	6,434.0	-669.3	17.5	669.6	0.00	0.00	0.00
6,920.0	90.00	178.50	6,434.0	-709.3	18.5	709.6	0.00	0.00	0.00
6,960.0	90.00	178.50	6,434.0	-749.3	19.6	749.6	0.00	0.00	0.00
7,000.0	90.00	178.50	6,434.0	-789.3	20.6	789.6	0.00	0.00	0.00
7,040.0	90.00	178.50	6,434.0	-829.3	21.7	829.6	0.00	0.00	0.00
7,080.0	90.00	178.50	6,434.0	-869.3	22.7	869.6	0.00	0.00	0.00
7,120.0	90.00	178.50	6,434.0	-909.2	23.8	909.6	0.00	0.00	0.00
7,160.0	90.00	178.50	6,434.0	-949.2	24.8	949.6	0.00	0.00	0.00
7,200.0	90.00	178.50	6,434.0	-989.2	25.9	989.6	0.00	0.00	0.00
7,240.0	90.00	178.50	6,434.0	-1,029.2	26.9	1,029.6	0.00	0.00	0.00
7,280.0	90.00	178.50	6,434.0	-1,069.2	27.9	1,069.6	0.00	0.00	0.00
7,320.0	90.00	178.50	6,434.0	-1,109.2	29.0	1,109.6	0.00	0.00	0.00
7,360.0	90.00	178.50	6,434.0	-1,149.2	30.0	1,149.6	0.00	0.00	0.00
7,400.0	90.00	178.50	6,434.0	-1,189.2	31.1	1,189.6	0.00	0.00	0.00
7,440.0	90.00	178.50	6,434.0	-1,229.1	32.1	1,229.6	0.00	0.00	0.00
7,480.0	90.00	178.50	6,434.0	-1,269.1	33.2	1,269.6	0.00	0.00	0.00
7,520.0	90.00	178.50	6,434.0	-1,309.1	34.2	1,309.6	0.00	0.00	0.00
7,560.0	90.00	178.50	6,434.0	-1,349.1	35.3	1,349.6	0.00	0.00	0.00
7,600.0	90.00	178.50	6,434.0	-1,389.1	36.3	1,389.6	0.00	0.00	0.00
7,640.0	90.00	178.50	6,434.0	-1,429.1	37.4	1,429.6	0.00	0.00	0.00
7,680.0	90.00	178.50	6,434.0	-1,469.1	38.4	1,469.6	0.00	0.00	0.00
7,720.0	90.00	178.50	6,434.0	-1,509.0	39.4	1,509.6	0.00	0.00	0.00
7,760.0	90.00	178.50	6,434.0	-1,549.0	40.5	1,549.6	0.00	0.00	0.00
7,800.0	90.00	178.50	6,434.0	-1,589.0	41.5	1,589.6	0.00	0.00	0.00
7,840.0	90.00	178.50	6,434.0	-1,629.0	42.6	1,629.6	0.00	0.00	0.00
7,880.0	90.00	178.50	6,434.0	-1,669.0	43.6	1,669.6	0.00	0.00	0.00
7,920.0	90.00	178.50	6,434.0	-1,709.0	44.7	1,709.6	0.00	0.00	0.00
7,960.0	90.00	178.50	6,434.0	-1,749.0	45.7	1,749.6	0.00	0.00	0.00
8,000.0	90.00	178.50	6,434.0	-1,788.9	46.8	1,789.6	0.00	0.00	0.00
8,040.0	90.00	178.50	6,434.0	-1,828.9	47.8	1,829.6	0.00	0.00	0.00
8,080.0	90.00	178.50	6,434.0	-1,868.9	48.8	1,869.6	0.00	0.00	0.00
8,120.0	90.00	178.50	6,434.0	-1,908.9	49.9	1,909.6	0.00	0.00	0.00
8,160.0	90.00	178.50	6,434.0	-1,948.9	50.9	1,949.6	0.00	0.00	0.00
8,200.0	90.00	178.50	6,434.0	-1,988.9	52.0	1,989.6	0.00	0.00	0.00
8,240.0	90.00	178.50	6,434.0	-2,028.9	53.0	2,029.6	0.00	0.00	0.00

Database:	Landmark	Local Co-ordinate Reference:	Well Wildhorse #06-0614H
Company:	Whiting Oil & Gas	TVD Reference:	WELL @ 5174.3ft (RKB Ensign Rig 14 - 15')
Project:	SEC.6-T9N-R59W	MD Reference:	WELL @ 5174.3ft (RKB Ensign Rig 14 - 15')
Site:	Wildhorse #06-0614H Pad Sec.6-T9N-R59W	North Reference:	True
Well:	Wildhorse #06-0614H	Survey Calculation Method:	Minimum Curvature
Wellbore:	Wellbore #1		
Design:	Plan #1 (11-15-11)		

Planned Survey									
Measured Depth (ft)	Inclination (°)	Azimuth (°)	Vertical Depth (ft)	+N/-S (ft)	+E/-W (ft)	Vertical Section (ft)	Dogleg Rate (°/100ft)	Build Rate (°/100ft)	Turn Rate (°/100ft)
8,280.0	90.00	178.50	6,434.0	-2,068.9	54.1	2,069.6	0.00	0.00	0.00
8,320.0	90.00	178.50	6,434.0	-2,108.8	55.1	2,109.6	0.00	0.00	0.00
8,360.0	90.00	178.50	6,434.0	-2,148.8	56.2	2,149.6	0.00	0.00	0.00
8,400.0	90.00	178.50	6,434.0	-2,188.8	57.2	2,189.6	0.00	0.00	0.00
8,440.0	90.00	178.50	6,434.0	-2,228.8	58.3	2,229.6	0.00	0.00	0.00
8,480.0	90.00	178.50	6,434.0	-2,268.8	59.3	2,269.6	0.00	0.00	0.00
8,520.0	90.00	178.50	6,434.0	-2,308.8	60.3	2,309.6	0.00	0.00	0.00
8,560.0	90.00	178.50	6,434.0	-2,348.8	61.4	2,349.6	0.00	0.00	0.00
8,600.0	90.00	178.50	6,434.0	-2,388.7	62.4	2,389.6	0.00	0.00	0.00
8,640.0	90.00	178.50	6,434.0	-2,428.7	63.5	2,429.6	0.00	0.00	0.00
8,680.0	90.00	178.50	6,434.0	-2,468.7	64.5	2,469.6	0.00	0.00	0.00
8,720.0	90.00	178.50	6,434.0	-2,508.7	65.6	2,509.6	0.00	0.00	0.00
8,760.0	90.00	178.50	6,434.0	-2,548.7	66.6	2,549.6	0.00	0.00	0.00
8,800.0	90.00	178.50	6,434.0	-2,588.7	67.7	2,589.6	0.00	0.00	0.00
8,840.0	90.00	178.50	6,434.0	-2,628.7	68.7	2,629.6	0.00	0.00	0.00
8,880.0	90.00	178.50	6,434.0	-2,668.6	69.8	2,669.6	0.00	0.00	0.00
8,920.0	90.00	178.50	6,434.0	-2,708.6	70.8	2,709.6	0.00	0.00	0.00
8,960.0	90.00	178.50	6,434.0	-2,748.6	71.8	2,749.6	0.00	0.00	0.00
9,000.0	90.00	178.50	6,434.0	-2,788.6	72.9	2,789.6	0.00	0.00	0.00
9,040.0	90.00	178.50	6,434.0	-2,828.6	73.9	2,829.6	0.00	0.00	0.00
9,080.0	90.00	178.50	6,434.0	-2,868.6	75.0	2,869.6	0.00	0.00	0.00
9,120.0	90.00	178.50	6,434.0	-2,908.6	76.0	2,909.6	0.00	0.00	0.00
9,160.0	90.00	178.50	6,434.0	-2,948.6	77.1	2,949.6	0.00	0.00	0.00
9,200.0	90.00	178.50	6,434.0	-2,988.5	78.1	2,989.6	0.00	0.00	0.00
9,240.0	90.00	178.50	6,434.0	-3,028.5	79.2	3,029.6	0.00	0.00	0.00
9,280.0	90.00	178.50	6,434.0	-3,068.5	80.2	3,069.6	0.00	0.00	0.00
9,320.0	90.00	178.50	6,434.0	-3,108.5	81.2	3,109.6	0.00	0.00	0.00
9,360.0	90.00	178.50	6,434.0	-3,148.5	82.3	3,149.6	0.00	0.00	0.00
9,400.0	90.00	178.50	6,434.0	-3,188.5	83.3	3,189.6	0.00	0.00	0.00
9,440.0	90.00	178.50	6,434.0	-3,228.5	84.4	3,229.6	0.00	0.00	0.00
9,480.0	90.00	178.50	6,434.0	-3,268.4	85.4	3,269.6	0.00	0.00	0.00
9,520.0	90.00	178.50	6,434.0	-3,308.4	86.5	3,309.6	0.00	0.00	0.00
9,560.0	90.00	178.50	6,434.0	-3,348.4	87.5	3,349.6	0.00	0.00	0.00
9,600.0	90.00	178.50	6,434.0	-3,388.4	88.6	3,389.6	0.00	0.00	0.00
9,640.0	90.00	178.50	6,434.0	-3,428.4	89.6	3,429.6	0.00	0.00	0.00
9,680.0	90.00	178.50	6,434.0	-3,468.4	90.7	3,469.6	0.00	0.00	0.00
9,720.0	90.00	178.50	6,434.0	-3,508.4	91.7	3,509.6	0.00	0.00	0.00
9,760.0	90.00	178.50	6,434.0	-3,548.3	92.7	3,549.6	0.00	0.00	0.00
9,800.0	90.00	178.50	6,434.0	-3,588.3	93.8	3,589.6	0.00	0.00	0.00
9,840.0	90.00	178.50	6,434.0	-3,628.3	94.8	3,629.6	0.00	0.00	0.00
9,880.0	90.00	178.50	6,434.0	-3,668.3	95.9	3,669.6	0.00	0.00	0.00
9,920.0	90.00	178.50	6,434.0	-3,708.3	96.9	3,709.6	0.00	0.00	0.00
9,960.0	90.00	178.50	6,434.0	-3,748.3	98.0	3,749.6	0.00	0.00	0.00
10,000.0	90.00	178.50	6,434.0	-3,788.3	99.0	3,789.6	0.00	0.00	0.00
10,040.0	90.00	178.50	6,434.0	-3,828.3	100.1	3,829.6	0.00	0.00	0.00
10,080.0	90.00	178.50	6,434.0	-3,868.2	101.1	3,869.6	0.00	0.00	0.00
10,120.0	90.00	178.50	6,434.0	-3,908.2	102.1	3,909.6	0.00	0.00	0.00
10,160.0	90.00	178.50	6,434.0	-3,948.2	103.2	3,949.6	0.00	0.00	0.00
10,200.0	90.00	178.50	6,434.0	-3,988.2	104.2	3,989.6	0.00	0.00	0.00
10,240.0	90.00	178.50	6,434.0	-4,028.2	105.3	4,029.6	0.00	0.00	0.00
10,280.0	90.00	178.50	6,434.0	-4,068.2	106.3	4,069.6	0.00	0.00	0.00
10,320.0	90.00	178.50	6,434.0	-4,108.2	107.4	4,109.6	0.00	0.00	0.00
10,360.0	90.00	178.50	6,434.0	-4,148.1	108.4	4,149.6	0.00	0.00	0.00
10,400.0	90.00	178.50	6,434.0	-4,188.1	109.5	4,189.6	0.00	0.00	0.00

Database:	Landmark	Local Co-ordinate Reference:	Well Wildhorse #06-0614H
Company:	Whiting Oil & Gas	TVD Reference:	WELL @ 5174.3ft (RKB Ensign Rig 14 - 15')
Project:	SEC.6-T9N-R59W	MD Reference:	WELL @ 5174.3ft (RKB Ensign Rig 14 - 15')
Site:	Wildhorse #06-0614H Pad Sec.6-T9N-R59W	North Reference:	True
Well:	Wildhorse #06-0614H	Survey Calculation Method:	Minimum Curvature
Wellbore:	Wellbore #1		
Design:	Plan #1 (11-15-11)		

Planned Survey									
Measured Depth (ft)	Inclination (°)	Azimuth (°)	Vertical Depth (ft)	+N/-S (ft)	+E/-W (ft)	Vertical Section (ft)	Dogleg Rate (°/100ft)	Build Rate (°/100ft)	Turn Rate (°/100ft)
10,418.9	90.00	178.50	6,434.0	-4,207.0	110.0	4,208.4	0.00	0.00	0.00
BHL 660'FSL & 646'FWL									

Targets									
Target Name - hit/miss target - Shape	Dip Angle (°)	Dip Dir. (°)	TVD (ft)	+N/-S (ft)	+E/-W (ft)	Northing (ft)	Easting (ft)	Latitude	Longitude
HARDLINE 660'FSL - plan misses target center by 4217.0ft at 1.0ft MD (1.0 TVD, 0.0 N, 0.0 E) - Polygon	0.00	0.00	1.0	-4,207.0	-290.0	1,528,353.65	3,407,261.68	40.774447	-104.029525
Point 1			1.0	0.0	0.0	1,528,353.65	3,407,261.68		
Point 2			1.0	0.0	800.0	1,528,366.93	3,408,061.57		
BHL 660'FSL & 646'F - plan hits target center - Point	0.00	0.00	6,434.0	-4,207.0	110.0	1,528,360.31	3,407,661.58	40.774447	-104.028081
HARDLINE 660'FNL - plan misses target center by 632.5ft at 1.0ft MD (1.0 TVD, 0.0 N, 0.0 E) - Polygon	0.00	0.00	1.0	-490.0	-400.0	1,532,068.31	3,407,090.01	40.784649	-104.029922
Point 1			1.0	0.0	0.0	1,532,068.31	3,407,090.01		
Point 2			1.0	0.0	800.0	1,532,081.58	3,407,889.90		

Casing Points					
Measured Depth (ft)	Vertical Depth (ft)	Name	Casing Diameter (")	Hole Diameter (")	
6,731.3	6,434.0	7"	7	7-1/2	

Formations					
Measured Depth (ft)	Vertical Depth (ft)	Name	Lithology	Dip (°)	Dip Direction (°)
6,362.8	6,309.0	NIOBRARA		0.00	

Plan Annotations				
Measured Depth (ft)	Vertical Depth (ft)	+N/-S (ft)	+E/-W (ft)	Comment
5,913.1	5,913.1	0.0	0.0	KOP
6,731.3	6,434.0	-520.7	13.6	End of Build