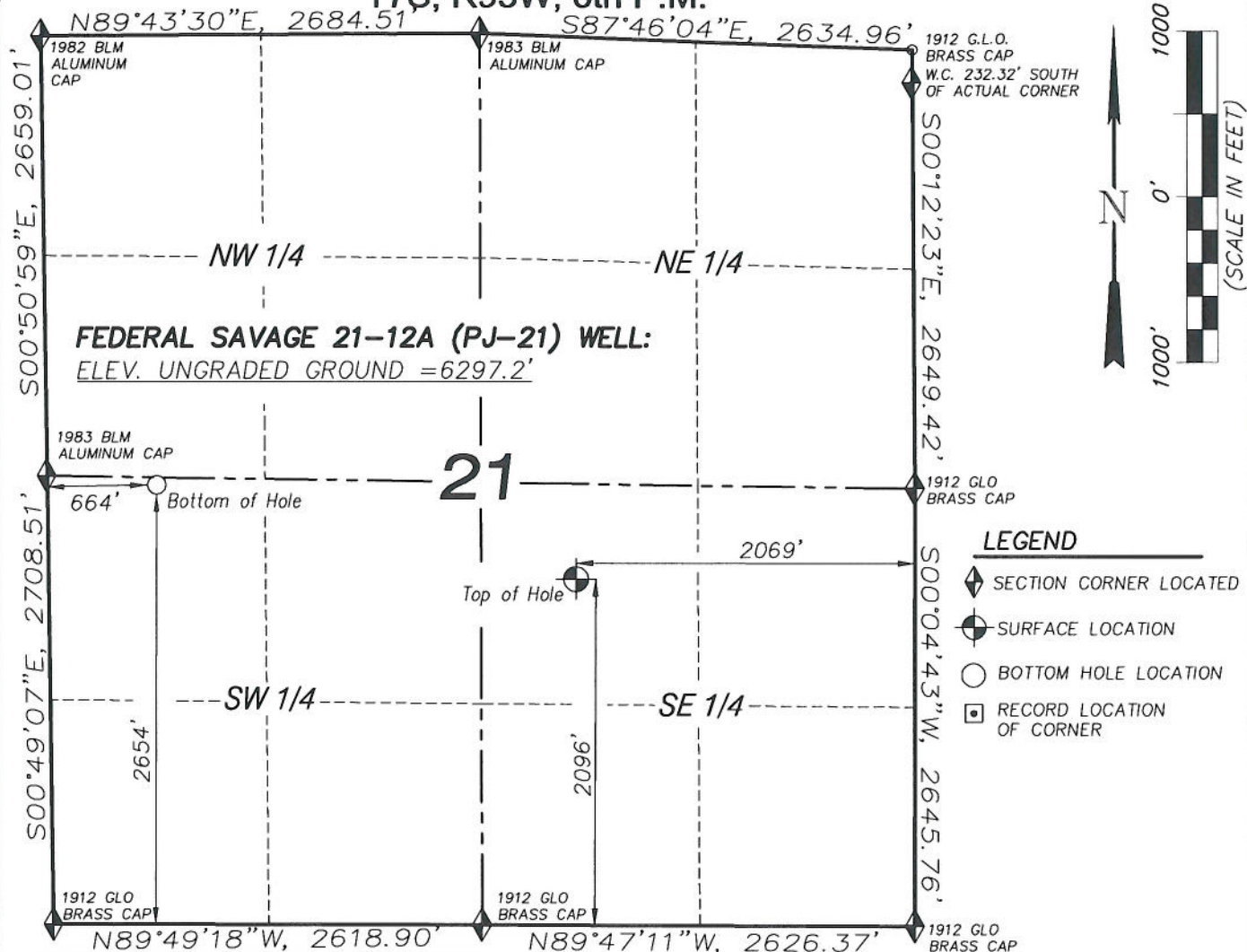


T7S, R95W, 6th P.M.



FEDERAL SAVAGE 21-12A (PJ-21) WELL:
ELEV. UNGRADED GROUND = 6297.2'

LEGEND

- ◆ SECTION CORNER LOCATED
- ⊙ SURFACE LOCATION
- BOTTOM HOLE LOCATION
- RECORD LOCATION OF CORNER

NOTES

1. WELL FOOTAGES ARE MEASURED AT RIGHT ANGLES TO SECTION LINES.
2. BASIS OF BEARING: GEODETIC- BASED ON GPS OBSERVATIONS.
3. ELEVATIONS BASED ON GPS OBSERVATIONS, NAVD 88 (GEOID 03), POST PROCESSED USING NGS OPUS.
4. THE BOTTOM HOLE BEARS N77°29'41\"W, 2615' FROM TOP OF HOLE.
5. SEE ADDENDUM TO LEGAL PLAT (SHEET 1g) FOR VISIBLE IMPROVEMENTS WITHIN 400 FEET OF THE PROPOSED OIL & GAS LOCATION.
6. CONTROL FOR SURVEY WAS ESTABLISHED USING DIFFERENTIALLY CORRECTED GPS FROM AN OPUS BASED CONTROL NETWORK. WELL LOCATION WAS ESTABLISHED USING NON-GPS CONVENTIONAL METHODS, THEREFORE NO PDOP READING WAS TAKEN.

FEDERAL SAVAGE 21-12A (PJ-21)
(WELLHEAD LOCATION) NAD 83
LATITUDE = 39.421538° N
LONGITUDE = 108.000022° W
(BOTTOM HOLE LOCATION) NAD 83
LATITUDE = 39.423070° N
LONGITUDE = 108.009063° W

CERTIFICATE OF SURVEYOR

I, TED TAGGART OF FRUITA, COLORADO HEREBY CERTIFY THAT THIS MAP WAS MADE FROM NOTES TAKEN DURING AN ACTUAL SURVEY MADE BY ME OR UNDER MY DIRECTION FOR ENCANA OIL & GAS (USA) INC. AND THAT THIS LOCATION HAS BEEN STAKED ON THE GROUND AS SHOWN HEREON.



906 Main Street
Evanston, Wyoming 82930
Phone No. (307) 789-4545

MAP to ACCOMPANY
APPLICATION for PERMIT to DRILL
EnCana Oil & Gas (USA) Inc.
Federal Savage 21-12A (PJ-21) Well

NW1/4 SE1/4, SECTION 21
T7S, R95W, 6th P.M.
GARFIELD COUNTY, COLORADO

| Location Plat | | Scale: 1" = 1000' | SHEET 1f OF 10 |
|---------------|----------|------------------------|-----------------------------|
| Project No. | 05-04-71 | Date Surveyed: 9/13/05 | |
| Date Drawn: | 1/13/11 | Latest Revision Date: | |
| | | | |