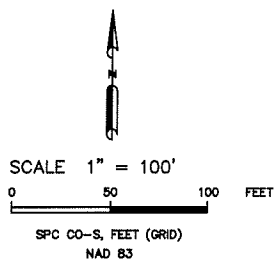
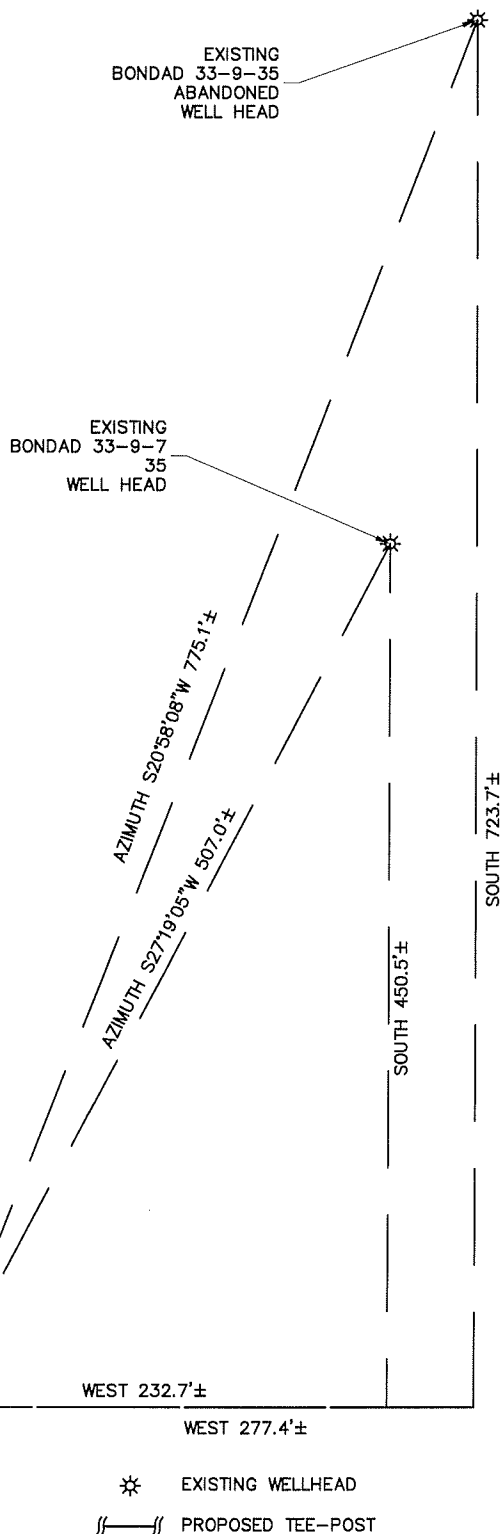


Drawing: DAVISWARREN_GUC3_APD.DWG Plotted by: DENNIS DEMPSE Date: 08/24/2011 04:00:02 PM R:\Project Files\BP\BP 80 Acres Infill\Davis, Warren GU C #3\Permit Drawings\

BONDAD 33-09-35	
OPERATOR	NORTHWEST PIPELINE CORP
NORTHING	1168617.508
EASTING	2334588.313
LATITUDE	N37° 06' 26.723"
LONGITUDE	W107° 46' 54.974"

BONDAD 33-09-07	
OPERATOR	WILLIAMS PRODUCTION COMPANY LLC
NORTHING	1168344.214
EASTING	2334543.620
LATITUDE	N37° 06' 24.011"
LONGITUDE	W107° 46' 55.443"

DAVIS WARREN GU C #3	
OPERATOR	BP AMERICA
NORTHING	1167893.7590
EASTING	2334310.9440
LATITUDE	N37° 06' 19.503"
LONGITUDE	W107° 46' 58.179"



⊛ EXISTING WELLHEAD
 ||—|| PROPOSED TEE-POST

	PROJ. NO	FILE NO.	DAVIS, WARREN GU C #3		REV
	8572	DAVIS_WARREN_GUC3_APD			
	DRAWN BY	DATE	CLIENT		
211 Beck Pkwy Dr. Suite 101 Durango, CO 81301 (970) 374-7767	DK/DD	08/24/11	KL	BP AMERICA PROD. CO. - DURANGO, CO	B