

EnCana Oil & Gas (USA) Inc.

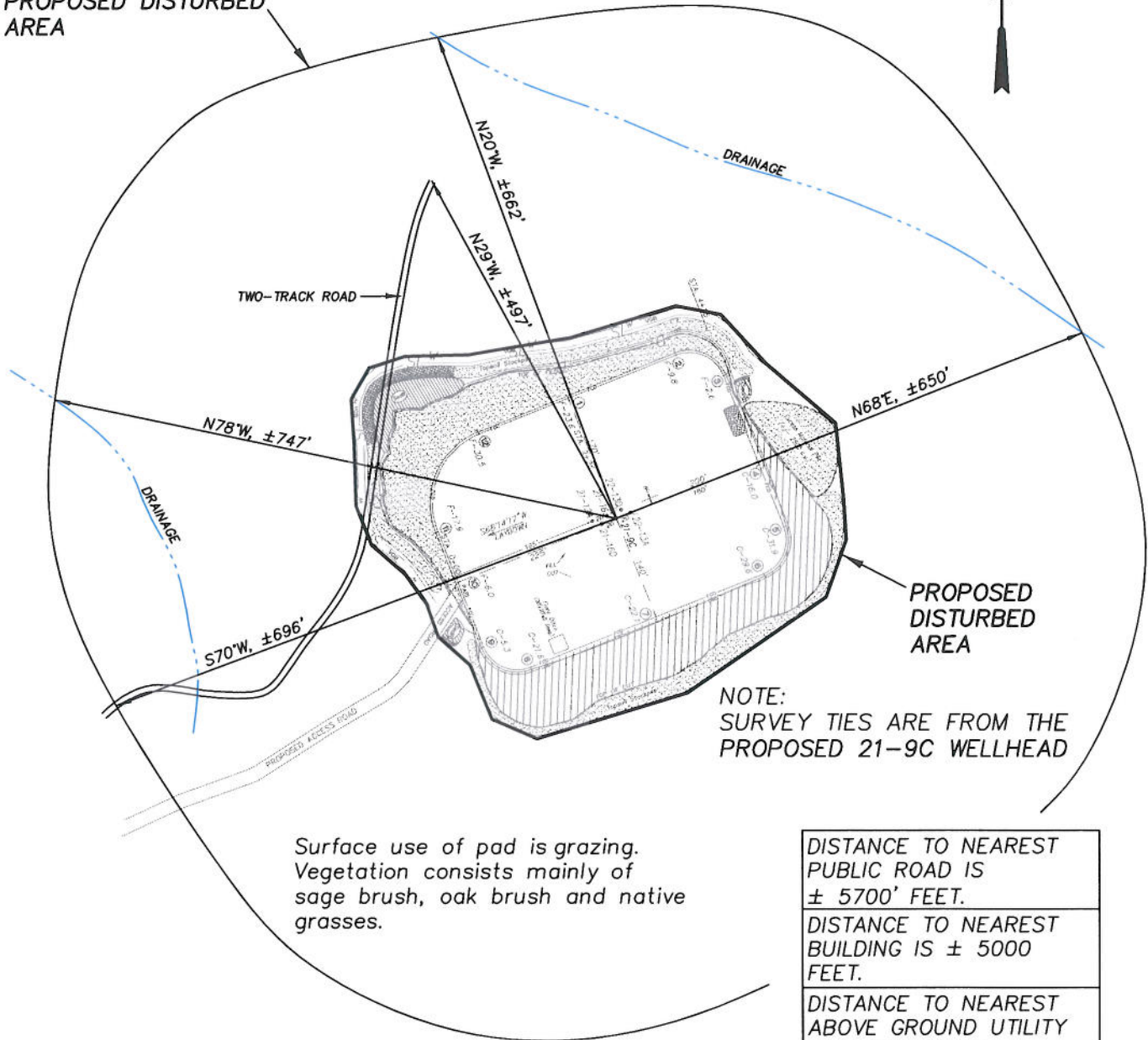
ADDENDUM TO LEGAL PLATS FOR

PJ-21 Well Pad

NW1/4 SE1/4, SECTION 21, T 7 S, R 95 W, 6th P.M.



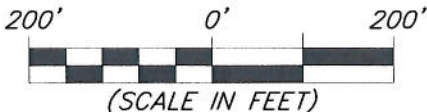
400 FEET FROM
PROPOSED DISTURBED
AREA



NOTE:
SURVEY TIES ARE FROM THE
PROPOSED 21-9C WELLHEAD

Surface use of pad is grazing.
Vegetation consists mainly of
sage brush, oak brush and native
grasses.

DISTANCE TO NEAREST
PUBLIC ROAD IS
± 5700' FEET.
DISTANCE TO NEAREST
BUILDING IS ± 5000
FEET.
DISTANCE TO NEAREST
ABOVE GROUND UTILITY
IS ± 550' FEET.
DISTANCE TO NEAREST
RAILROAD IS ±18,000 FT.



(SCALE IN FEET)



906 Main Street
Evanston, Wyoming 82930
Phone No. (307) 789-4545

Survey Addendum		Scale: 1" = 200'	SHEET 1g OF 10
Project No.	05-04-71	Date Surveyed: 9/13/05	
Date	1/13/11	Latest Revision Date: 9/21/11	
Drawn:			