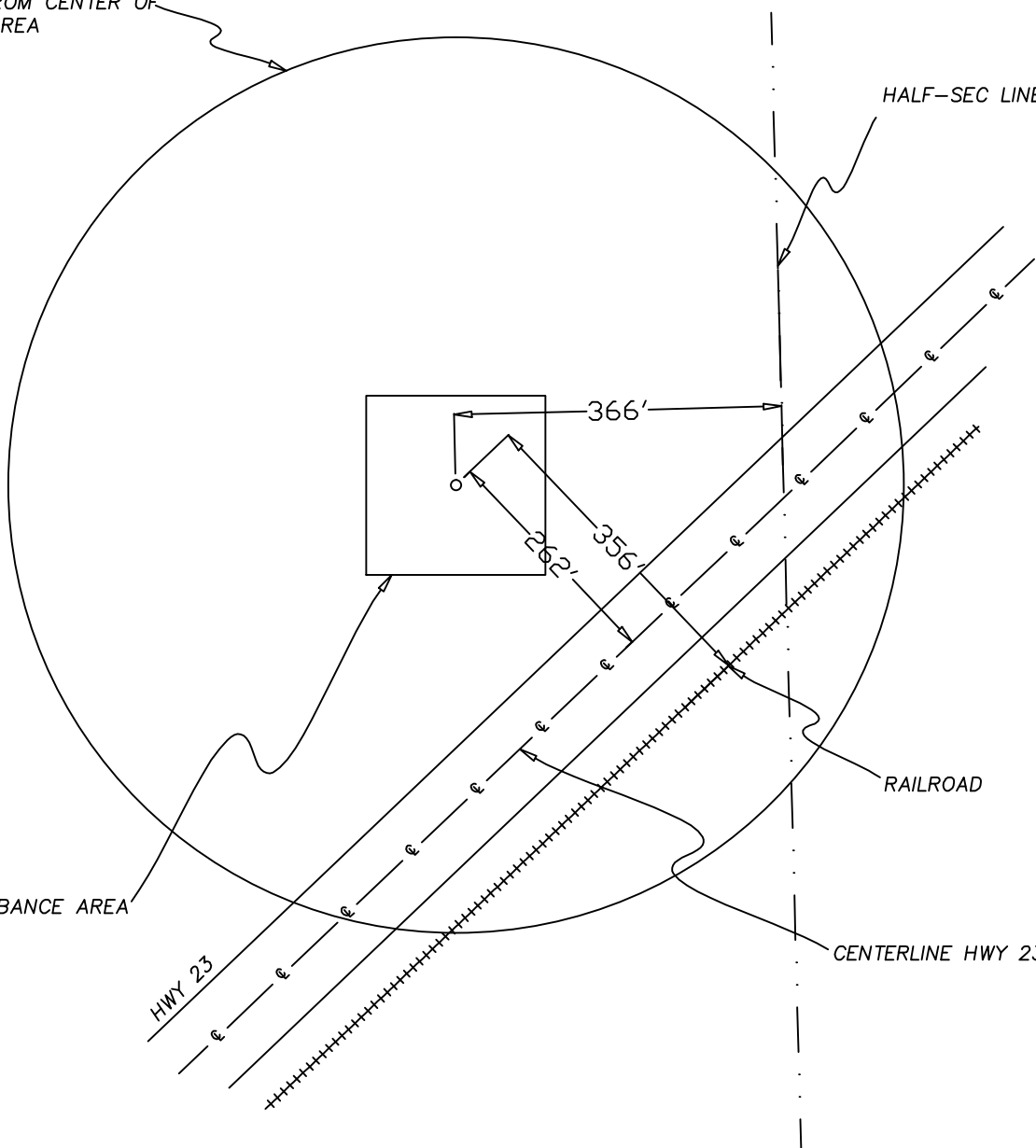


500' RADIUS FROM CENTER OF
DISTURBANCE AREA

HALF-SEC LINE

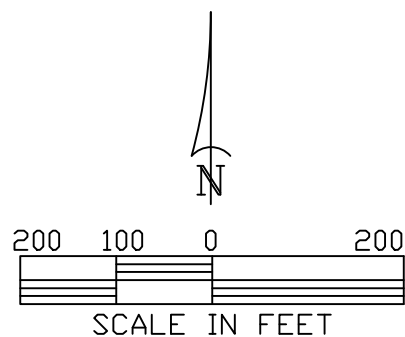



200'X200' DISTURBANCE AREA

RAILROAD

CENTERLINE HWY 23

- Location
- x — Fence Line
- · - Half-Sec. Line
- - - Section Line
- OP — Overhead Powerline



 <p>GREAT PLAINS SURVEYING, INC.</p> <p>20575 Co. Rd. 21 Haxtun, CO 80731</p> <p>Phone 970-774-3602</p>	LOCATION DRAWING
	STONER 843-4-24
	SCALE 1" = 200'
	PHILLIPS COUNTY, COLORADO
L48N43GPS	
9402-294	