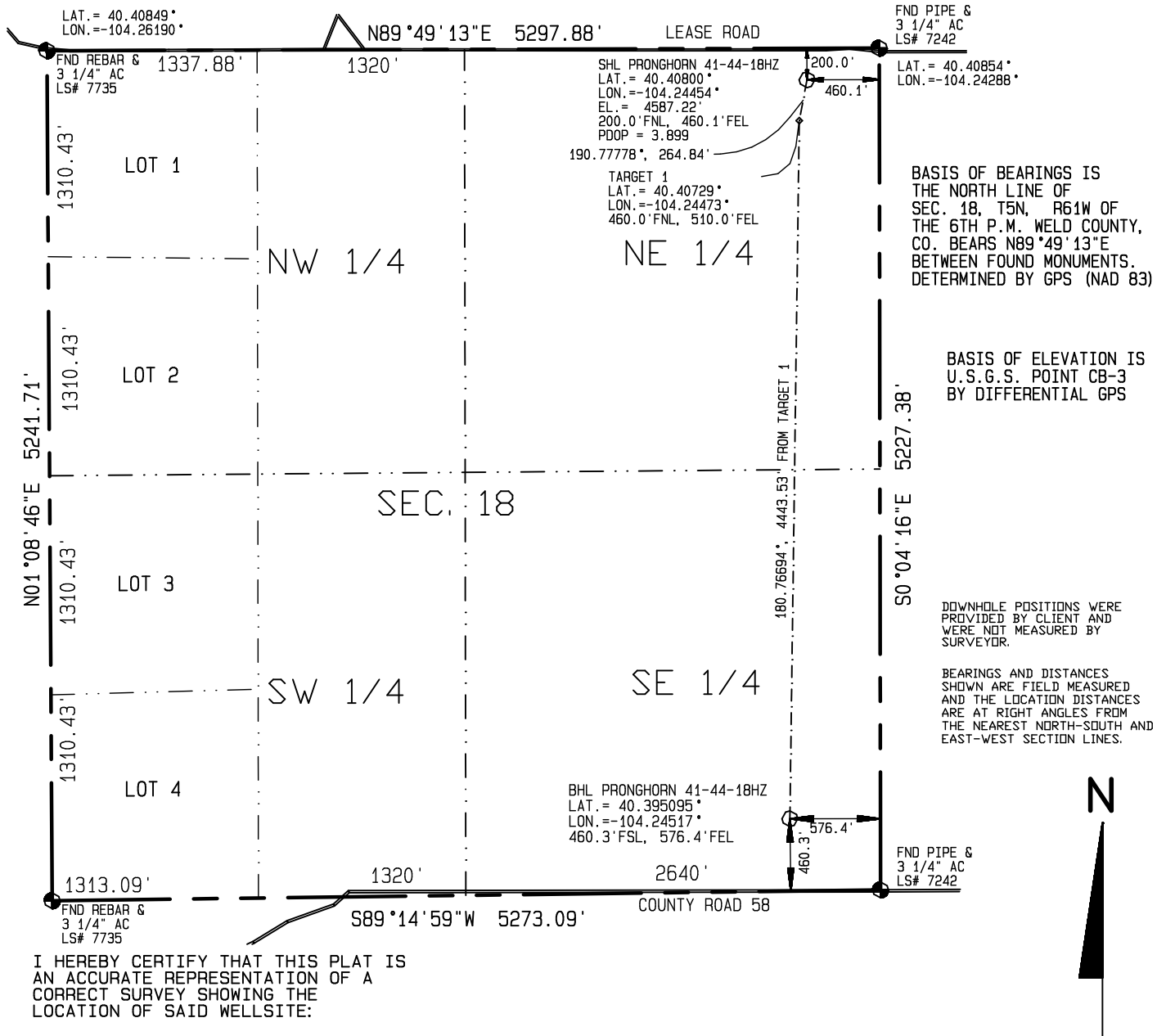
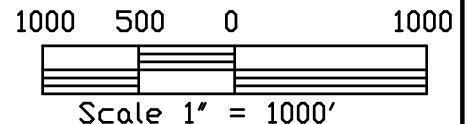


Visible improvements within 400 feet of the location include:
 A field road passes 185' to the north.
 An abandoned well is 12.7' NNE.



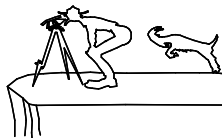
I HEREBY CERTIFY THAT THIS PLAT IS
 AN ACCURATE REPRESENTATION OF A
 CORRECT SURVEY SHOWING THE
 LOCATION OF SAID WELLSITE:



Dan Griggs PLS# 38018

CONTRACT SURVEYORS, LTD.
 COMPLETE SURVEYING AND GLOBAL POSITIONING

2133 SOUTH BELLAIRE STREET #14
 DENVER COLORADO 80222
 (303) 756-3695



CSL# 11104-56

DATE OF FIELD WORK:

NOVEMBER 1, 2011

DATE OF DRAWING:

DECEMBER 20, 2011

PRONGHORN 41-44-18HZ (HORIZONTAL WELL)

NE1/4 NE1/4, SEC. 18, T5N, R61W

BONANZA CREEK ENERGY OPERATING COMPANY, LLC

WELD COUNTY, COLORADO