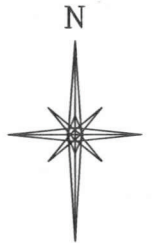
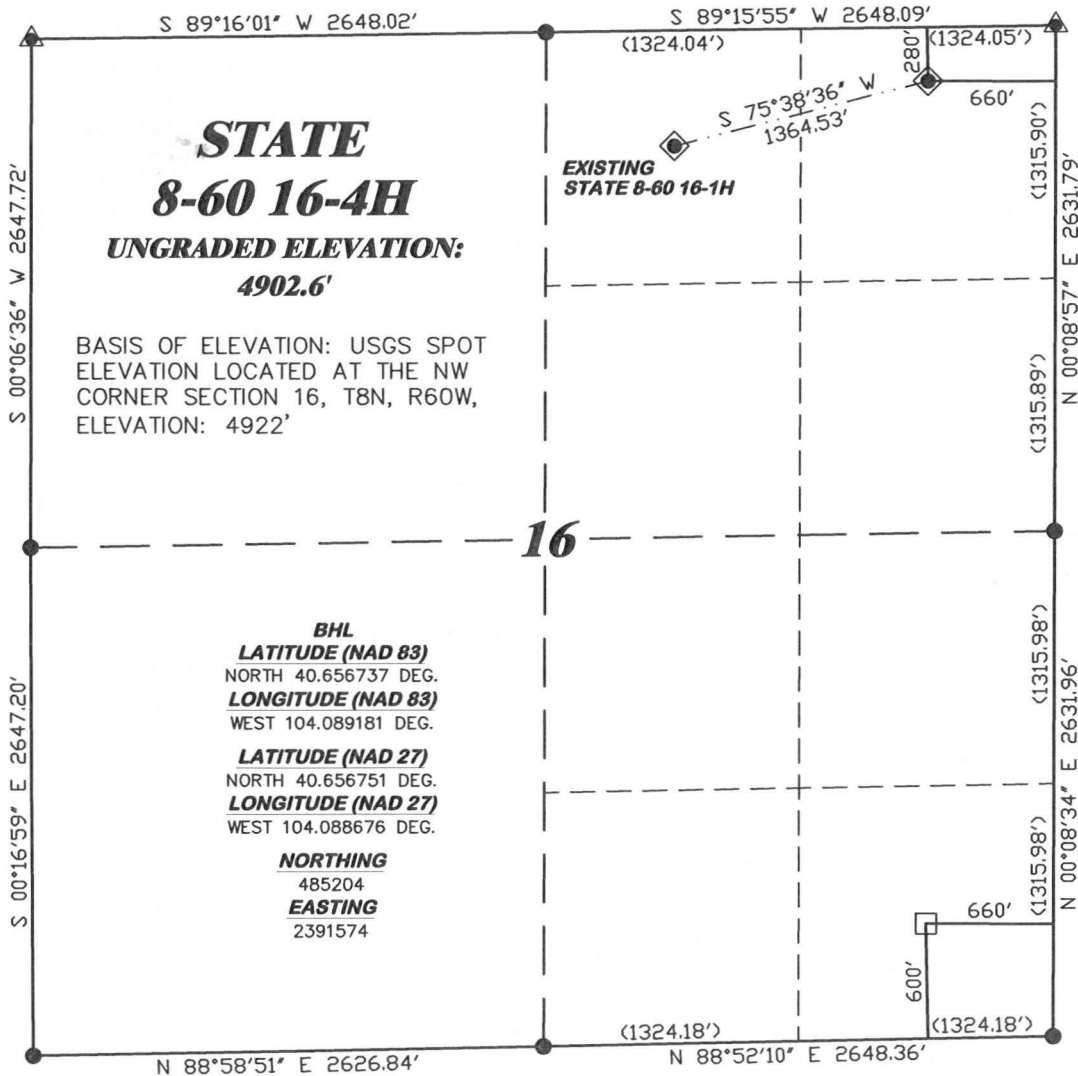


**R. 60 W.**



SCALE 1" = 1000'

**T. 8 N.**

**LATITUDE (NAD 83)**

NORTH 40.668780 DEG.

**LONGITUDE (NAD 83)**

WEST 104.088888 DEG.

**LATITUDE (NAD 27)**

NORTH 40.668794 DEG.

**LONGITUDE (NAD 27)**

WEST 104.088384 DEG.

**NORTHING**

489592.67

**EASTING**

2391584.79

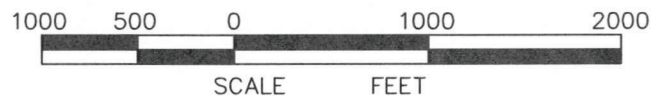
**BASIS OF BEARING/DATUM**

SPCS CO NORTH NAD 27  
BASED ON NGS TRIANGULATION  
STATION "SNOW"

**NOTES**

PRARIE LANDS  
EXISTING ACCESS ROAD WITHIN  
400' RADIUS OF WELL SITE.

GPS OPERATOR PAUL ORME  
OBSERVED A PDOP OF 2.0.  
ALL GPS OBSERVATIONS ARE IN  
COMPLIANCE WITH COGCC RULE No.215.

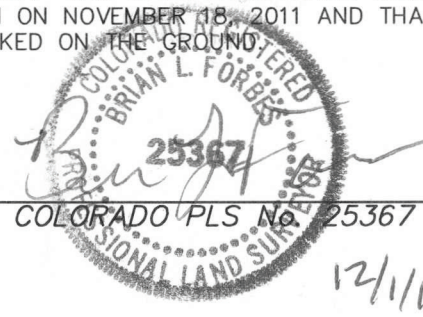


**SURVEYOR'S STATEMENT**

I, BRIAN L. FORBES, OF ROCK SPRINGS, WYOMING, HEREBY STATE: THIS MAP WAS MADE FROM NOTES TAKEN DURING AN ACTUAL FIELD SURVEY DONE UNDER MY DIRECT SUPERVISION ON NOVEMBER 18, 2011 AND THAT THIS PLAT CORRECTLY SHOWS THE LOCATION OF STATE 8-60 16-4H AS STAKED ON THE GROUND.

**LEGEND**

- ◆ WELL LOCATION
- BOTTOM HOLE LOC. (APPROX)
- FOUND MONUMENT
- ▲ PREVIOUSLY FOUND MONUMENT



**DRG** RIFFIN & ASSOCIATES, INC.  
(307) 362-5028 1414 ELK ST., ROCK SPRINGS, WY 82901

DRAWN: 11/30/11 - JMB

SCALE: 1" = 1000'

REVISED: NA

DRG JOB No. 18947

EXHIBIT 1

**PLAT OF DRILLING LOCATION  
FOR  
CHESAPEAKE ENERGY LLC.**

**280' F/NL & 660' F/EL, NENE, SECTION 16,  
T. 8 N., R. 60 W., 6th P.M.  
WELD COUNTY, COLORADO**