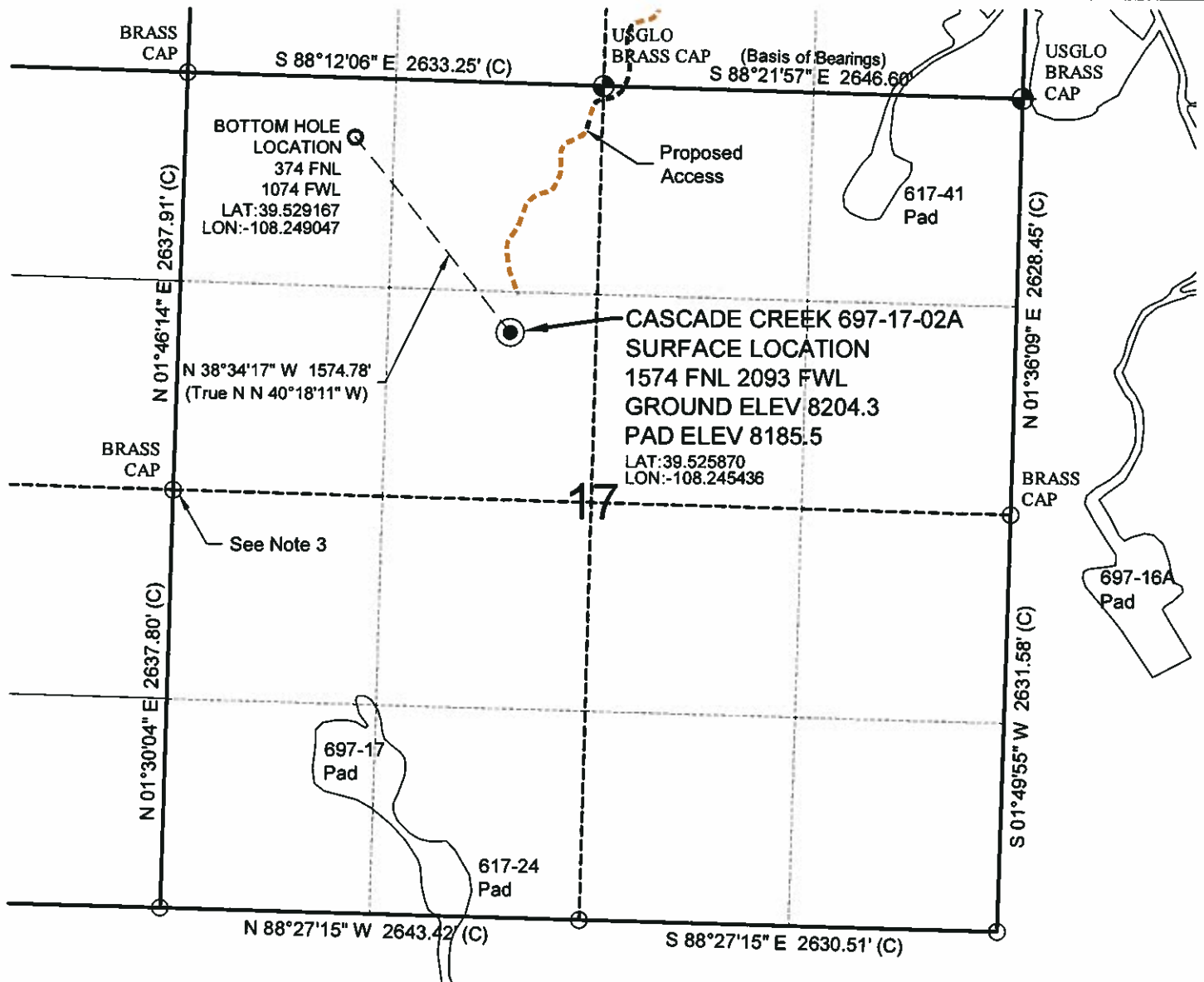


WELL LOCATION MAP

**CASCADE CREEK
697-17A PAD**



SURVEYOR'S STATEMENT

The undersigned hereby states that the well location shown hereon was staked on the ground based on existing monumentation and/or physical evidence found in the field and is correct to the best of my knowledge, information and belief.

NOTES

- 1.) Horizontal and vertical datum, based on NGS control point "MCCARY" with an elevation of 5171.5.
- 2.) All directions, distances, and dimensions shown hereon are based on coordinates from the "Colorado coordinate system of 1983 central zone" (article 52 of title 38, C.R.S.).
- 3.) All section line dimensions shown hereon are based on field measurements of existing monuments and/or physical evidence found in the field unless otherwise indicated. Refer to surveys by others.
- 4.) Physical features shown hereon are for graphical representation only.
- 5.) See Form 2A for visible improvements within 400' of wellhead.
- 6.) Distances to nearest section lines are measured perpendicularly.
- 7.) This is not a land survey nor land survey plat.
- 8.) Date of Survey 11/18/10; Date of Drawing 1/3/11. REV 1
PDOP Reading: 2.3 Instrument Operator: Dave Murrey

1/3/11



GEO SURV

LAND SURVEYING AND MAPPING
LAFAYETTE - WINTER PARK
Ph 303 666 0379 Fx 303 665 6320

**OXY USA WTP LP
CASCADE CREEK 697-17-02A**

SL SE1/4 NW1/4 SEC. 17 T6S R97W
BL NW1/4 NW1/4 SEC. 17 T6S R97W
6th PM GARFIELD COUNTY COLORADO