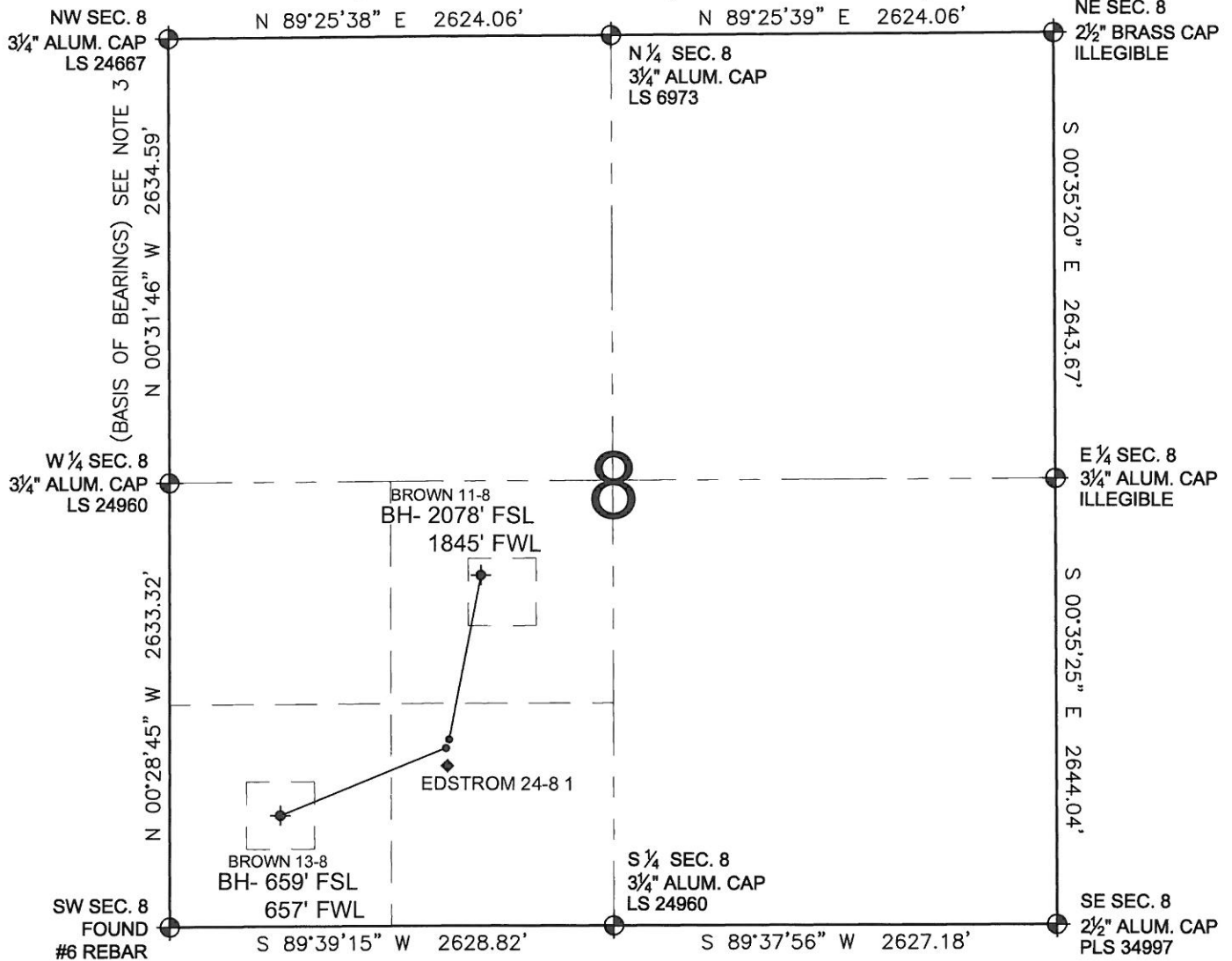


PAD DRAWING: BROWN 2 PAD

SECTION 8, TOWNSHIP 1 SOUTH, RANGE 67 WEST, 6TH P.M.



NOTES:

1. THIS FIELD SURVEY CONFORMS TO THE MINIMUM STANDARDS SET BY THE C.O.G.C.C., RULE NO. 215
2. HORIZONTAL POSITIONS AND ORTHOMETRIC ELEVATIONS SHOWN AT THE WELL HEAD, ARE BASED ON GPS-RTK POSITIONS DERIVED FROM MINIMUM 2-HOUR STATIC OBSERVATIONS CORRECTED BY THE NATIONAL GEODETIC SURVEY ONLINE POSITIONING USER SERVICE, O.P.U.S. DATUM: HORIZONTAL = NAD83/2007, VERTICAL = NAVD88
3. THE BASIS OF BEARINGS ARE STATE PLANE COORDINATE SYSTEM GRID BEARINGS SHOWN HEREON BETWEEN THE DESCRIBED THE MONUMENTS SHOWN HEREON.
4. GRID DISTANCES ARE SHOWN, AS MEASURED IN THE FIELD, WITH TIES TO WELLS MEASURED PERPENDICULAR TO SECTION LINES.

LEGEND

- = EXISTING MONUMENT
 = BOTTOM HOLE
 BH= BOTTOM HOLE
 = PROPOSED WELL
 = EXISTING WELL

NOTES:

BROWN 11-8 TO BE AT 1105' FSL, 1655' FWL.
 BOTTOM HOLE AT 2078' FSL & 1845' FWL.
 BROWN 13-8 TO BE AT 1086' FSL, 1652' FWL.
 BOTTOM HOLE AT 659' FSL & 657' FWL.
 EDSTROM 24-8 1 IS 986' FSL & 1648' FWL

PREPARED BY:



BAYSWATER EXPLORATION & PRODUCTION, LLC

FIELD DATE: 11-01-11	PAD NAME: BROWN 2 PAD
DRAWING DATE: 11-21-11	SURFACE LOCATION: ADAMS COUNTY, COLORADO SE 1/4 SW 1/4, SEC. 8, T1S, R67W
BY: SMF	

