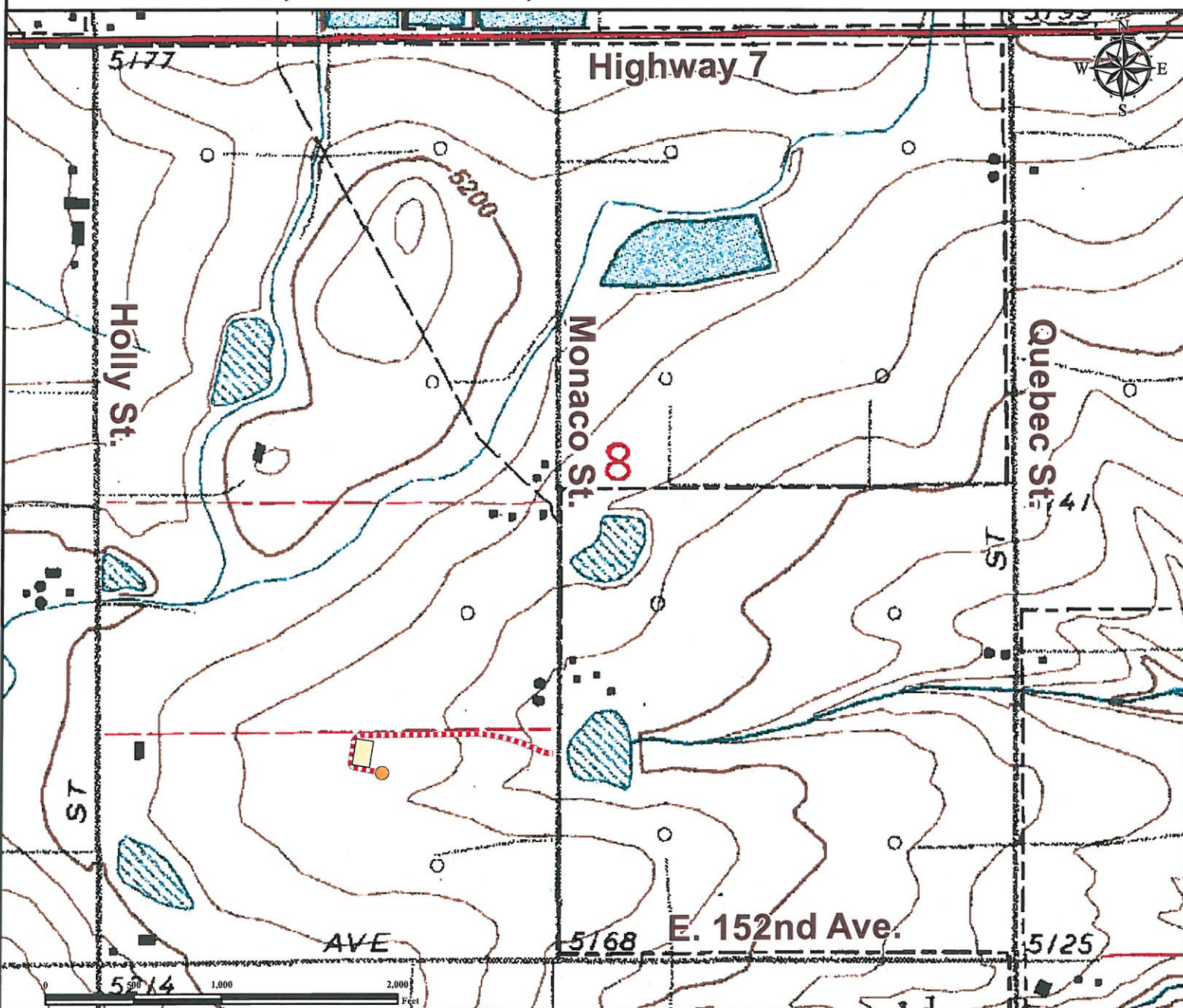


Access Road Map BROWN 13-8

SE¼ SW¼ SECTION 8, TOWNSHIP 1 SOUTH, RANGE 67 WEST OF THE 6TH PRINCIPAL MERIDIAN






From Brighton, CO: From the intersection of US Highway 85 and CO Highway 7, proceed West on CO Highway 7 4.7 miles to Monaco st.

Turn Left On Monaco st and proceed south ± 0.75 miles to proposed access road.

Turn Right onto proposed access road and drive west ± 0.25 miles to proposed well location.

Total distance from Brighton, CO to proposed well location is ± 5.70 miles.

Legend

 Proposed Facility  Proposed Access Road  Proposed Well

Reference Location

** All Measurements are Made from
Reference Well BROWN 13-8 **

Lat: 39.974855° Long: -104.916119° (NAD83)
Elevation: 5173 Feet



Use our resources to find yours!
www.petro-fs.com
(303) 928-7128

Field Date: 11/1/2011
Drafting Date: 11/15/2011
Drafter: DMM
Checked By: BHF

Data Sources:
- TOPO courtesy of USGS

Prepared for:

 BAYSWATER
EXPLORATION AND PRODUCTION, LLC