

Well Name: Brown 13-8

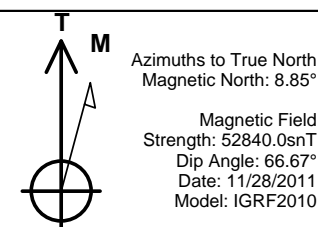
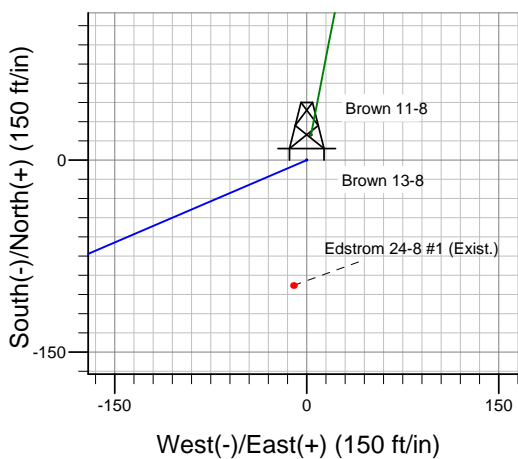
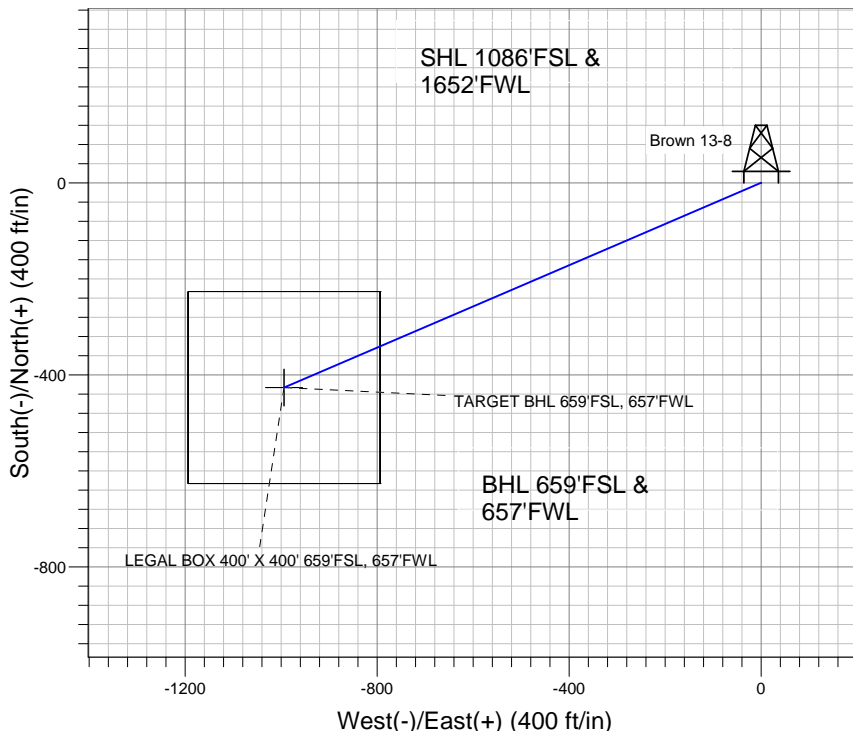
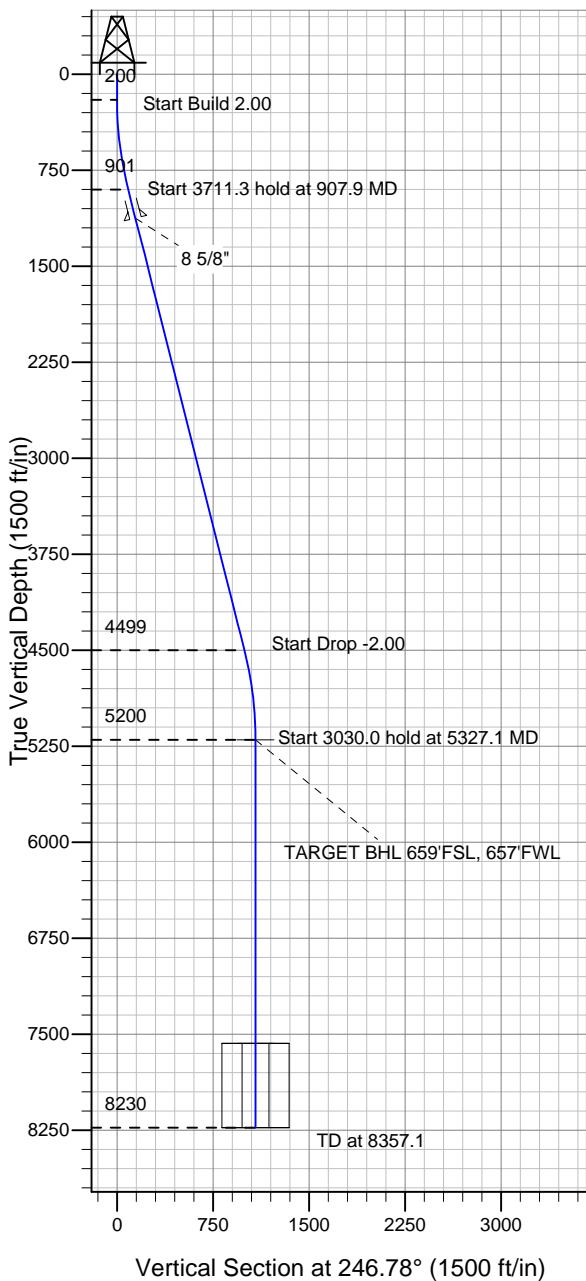
Surface Location: Brown 13-8 Pad Sec.8-T1S-R67W
North American Datum 1983 , US State Plane 1983 , Colorado Northern Zone

Ground Elevation: 5173.0

+N/-S	+E/-W	Northing	Easting	Latitude	Longitude	Slot
0.0	0.0	1234225.89	3163635.49	39.974855	-104.916119	

Original Well Elev WELL @ 5185.0ft (Original Well Elev)

BAYSWATER EXPLORATION & PRODUCTION



WELLBORE TARGET DETAILS (LAT/LONG)

Name	TVD	+N/-S	+E/-W	Latitude	Longitude	Shape
TARGET BHL 659'FSL, 657'FWL	5200.0	-426.5	-994.1	39.973684	-104.919666	Point
LEGAL BOX 400' X 400' 659'FSL, 657'FWL	7572.0	-426.5	-994.1	39.973684	-104.919666	Rectangle (Sides: L400.0 W400.0)

SECTION DETAILS

Sec	MD	Inc	Azi	TVD	+N/-S	+E/-W	DLeg	TFace	VSec	Target
1	0.0	0.00	0.00	0.0	0.0	0.0	0.00	0.00	0.0	
2	200.0	0.00	0.00	200.0	0.0	0.0	0.00	0.00	0.0	
3	907.9	14.16	246.78	900.7	-34.3	-80.0	2.00	246.78	87.0	
4	4619.2	14.16	246.78	4499.3	-392.2	-914.2	0.00	0.00	994.8	
5	5327.1	0.00	0.00	5200.0	-426.5	-994.1	2.00	180.00	1081.8	TARGET BHL 659'FSL, 657'FWL
6	8357.1	0.00	0.00	8230.0	-426.5	-994.1	0.00	0.00	1081.8	



Directional

BAYSWATER EXPLORATION & PRODUCTION

SEC.8-T1S-R67W

Brown 13-8 Pad Sec.8-T1S-R67W

Brown 13-8

Wellbore #1

Plan: Plan #2 (12-1-11)

Standard Planning Report

01 December, 2011

Database:	Landmark	Local Co-ordinate Reference:	Well Brown 13-8
Company:	BAYSWATER EXPLORATION & PRODUCTION	TVD Reference:	WELL @ 5185.0ft (Original Well Elev)
Project:	SEC.8-T1S-R67W	MD Reference:	WELL @ 5185.0ft (Original Well Elev)
Site:	Brown 13-8 Pad Sec.8-T1S-R67W	North Reference:	True
Well:	Brown 13-8	Survey Calculation Method:	Minimum Curvature
Wellbore:	Wellbore #1		
Design:	Plan #2 (12-1-11)		

Project	SEC.8-T1S-R67W, Adams County, CO		
Map System:	US State Plane 1983	System Datum:	Mean Sea Level
Geo Datum:	North American Datum 1983		Using Well Reference Point
Map Zone:	Colorado Northern Zone		Using geodetic scale factor

Brown 13-8 Pad Sec.8-T1S-R67W					
Site Position:		Northing:	1,234,225.91 ft	Latitude:	39.974855
From:	Lat/Long	Easting:	3,163,635.49ft	Longitude:	-104.916119
Position Uncertainty:	0.0 ft	Slot Radius:	"	Grid Convergence:	0.38 °

Well	Brown 13-8					
Well Position	+N/-S	0.0 ft	Northing:	1,234,225.89 ft	Latitude:	39.974855
	+E/-W	0.0 ft	Easting:	3,163,635.49 ft	Longitude:	-104.916119
Position Uncertainty		0.0 ft	Wellhead Elevation:	ft	Ground Level:	5,173.0 ft

Wellbore	Wellbore #1				
Magnetics	Model Name	Sample Date	Declination (°)	Dip Angle (°)	Field Strength (nT)
	IGRF2010	11/28/2011	8.85	66.67	52,840

Design	Plan #2 (12-1-11)			
Audit Notes:				
Version:	Phase:	PROTOTYPE	Tie On Depth:	0.0
Vertical Section:	Depth From (TVD) (ft)	+N/-S (ft)	+E/-W (ft)	Direction (°)
	0.0	0.0	0.0	246.78

Plan Sections										
Measured Depth (ft)	Inclination (°)	Azimuth (°)	Vertical Depth (ft)	+N/-S (ft)	+E/-W (ft)	Dogleg Rate (°/100ft)	Build Rate (°/100ft)	Turn Rate (°/100ft)	TFO (°)	Target
0.0	0.00	0.00	0.0	0.0	0.0	0.00	0.00	0.00	0.00	
200.0	0.00	0.00	200.0	0.0	0.0	0.00	0.00	0.00	0.00	
907.9	14.16	246.78	900.7	-34.3	-80.0	2.00	2.00	0.00	246.78	
4,619.2	14.16	246.78	4,499.3	-392.2	-914.2	0.00	0.00	0.00	0.00	
5,327.1	0.00	0.00	5,200.0	-426.5	-994.1	2.00	-2.00	0.00	180.00	TARGET BHL 659'I
8,357.1	0.00	0.00	8,230.0	-426.5	-994.1	0.00	0.00	0.00	0.00	

Database:	Landmark	Local Co-ordinate Reference:	Well Brown 13-8
Company:	BAYSWATER EXPLORATION & PRODUCTION	TVD Reference:	WELL @ 5185.0ft (Original Well Elev)
Project:	SEC.8-T1S-R67W	MD Reference:	WELL @ 5185.0ft (Original Well Elev)
Site:	Brown 13-8 Pad Sec.8-T1S-R67W	North Reference:	True
Well:	Brown 13-8	Survey Calculation Method:	Minimum Curvature
Wellbore:	Wellbore #1		
Design:	Plan #2 (12-1-11)		

Planned Survey

Measured Depth (ft)	Inclination (°)	Azimuth (°)	Vertical Depth (ft)	+N/-S (ft)	+E/-W (ft)	Vertical Section (ft)	Dogleg Rate (°/100ft)	Build Rate (°/100ft)	Turn Rate (°/100ft)
0.0	0.00	0.00	0.0	0.0	0.0	0.0	0.00	0.00	0.00
40.0	0.00	0.00	40.0	0.0	0.0	0.0	0.00	0.00	0.00
80.0	0.00	0.00	80.0	0.0	0.0	0.0	0.00	0.00	0.00
120.0	0.00	0.00	120.0	0.0	0.0	0.0	0.00	0.00	0.00
160.0	0.00	0.00	160.0	0.0	0.0	0.0	0.00	0.00	0.00
200.0	0.00	0.00	200.0	0.0	0.0	0.0	0.00	0.00	0.00
240.0	0.80	246.78	240.0	-0.1	-0.3	0.3	2.00	2.00	0.00
280.0	1.60	246.78	280.0	-0.4	-1.0	1.1	2.00	2.00	0.00
320.0	2.40	246.78	320.0	-1.0	-2.3	2.5	2.00	2.00	0.00
360.0	3.20	246.78	359.9	-1.8	-4.1	4.5	2.00	2.00	0.00
400.0	4.00	246.78	399.8	-2.8	-6.4	7.0	2.00	2.00	0.00
440.0	4.80	246.78	439.7	-4.0	-9.2	10.0	2.00	2.00	0.00
480.0	5.60	246.78	479.6	-5.4	-12.6	13.7	2.00	2.00	0.00
520.0	6.40	246.78	519.3	-7.0	-16.4	17.9	2.00	2.00	0.00
560.0	7.20	246.78	559.1	-8.9	-20.8	22.6	2.00	2.00	0.00
600.0	8.00	246.78	598.7	-11.0	-25.6	27.9	2.00	2.00	0.00
640.0	8.80	246.78	638.3	-13.3	-31.0	33.7	2.00	2.00	0.00
680.0	9.60	246.78	677.8	-15.8	-36.9	40.1	2.00	2.00	0.00
720.0	10.40	246.78	717.1	-18.6	-43.3	47.1	2.00	2.00	0.00
760.0	11.20	246.78	756.4	-21.5	-50.1	54.6	2.00	2.00	0.00
800.0	12.00	246.78	795.6	-24.7	-57.5	62.6	2.00	2.00	0.00
840.0	12.80	246.78	834.7	-28.1	-65.4	71.2	2.00	2.00	0.00
880.0	13.60	246.78	873.6	-31.7	-73.8	80.3	2.00	2.00	0.00
907.9	14.16	246.78	900.7	-34.3	-80.0	87.0	2.00	2.00	0.00
920.0	14.16	246.78	912.5	-35.5	-82.7	90.0	0.00	0.00	0.00
960.0	14.16	246.78	951.2	-39.3	-91.7	99.8	0.00	0.00	0.00
1,000.0	14.16	246.78	990.0	-43.2	-100.7	109.5	0.00	0.00	0.00
1,040.0	14.16	246.78	1,028.8	-47.1	-109.7	119.3	0.00	0.00	0.00
1,080.0	14.16	246.78	1,067.6	-50.9	-118.7	129.1	0.00	0.00	0.00
1,120.0	14.16	246.78	1,106.4	-54.8	-127.6	138.9	0.00	0.00	0.00
1,139.2	14.16	246.78	1,125.0	-56.6	-132.0	143.6	0.00	0.00	0.00
8 5/8"									
1,160.0	14.16	246.78	1,145.2	-58.6	-136.6	148.7	0.00	0.00	0.00
1,200.0	14.16	246.78	1,183.9	-62.5	-145.6	158.5	0.00	0.00	0.00
1,240.0	14.16	246.78	1,222.7	-66.3	-154.6	168.2	0.00	0.00	0.00
1,280.0	14.16	246.78	1,261.5	-70.2	-163.6	178.0	0.00	0.00	0.00
1,320.0	14.16	246.78	1,300.3	-74.1	-172.6	187.8	0.00	0.00	0.00
1,360.0	14.16	246.78	1,339.1	-77.9	-181.6	197.6	0.00	0.00	0.00
1,400.0	14.16	246.78	1,377.9	-81.8	-190.6	207.4	0.00	0.00	0.00
1,440.0	14.16	246.78	1,416.7	-85.6	-199.6	217.2	0.00	0.00	0.00
1,480.0	14.16	246.78	1,455.4	-89.5	-208.6	226.9	0.00	0.00	0.00
1,520.0	14.16	246.78	1,494.2	-93.3	-217.5	236.7	0.00	0.00	0.00
1,560.0	14.16	246.78	1,533.0	-97.2	-226.5	246.5	0.00	0.00	0.00
1,600.0	14.16	246.78	1,571.8	-101.1	-235.5	256.3	0.00	0.00	0.00
1,640.0	14.16	246.78	1,610.6	-104.9	-244.5	266.1	0.00	0.00	0.00
1,680.0	14.16	246.78	1,649.4	-108.8	-253.5	275.9	0.00	0.00	0.00
1,720.0	14.16	246.78	1,688.2	-112.6	-262.5	285.6	0.00	0.00	0.00
1,760.0	14.16	246.78	1,726.9	-116.5	-271.5	295.4	0.00	0.00	0.00
1,800.0	14.16	246.78	1,765.7	-120.3	-280.5	305.2	0.00	0.00	0.00
1,840.0	14.16	246.78	1,804.5	-124.2	-289.5	315.0	0.00	0.00	0.00
1,880.0	14.16	246.78	1,843.3	-128.1	-298.5	324.8	0.00	0.00	0.00
1,920.0	14.16	246.78	1,882.1	-131.9	-307.5	334.6	0.00	0.00	0.00
1,960.0	14.16	246.78	1,920.9	-135.8	-316.4	344.3	0.00	0.00	0.00

Database:	Landmark	Local Co-ordinate Reference:	Well Brown 13-8
Company:	BAYSWATER EXPLORATION & PRODUCTION	TVD Reference:	WELL @ 5185.0ft (Original Well Elev)
Project:	SEC.8-T1S-R67W	MD Reference:	WELL @ 5185.0ft (Original Well Elev)
Site:	Brown 13-8 Pad Sec.8-T1S-R67W	North Reference:	True
Well:	Brown 13-8	Survey Calculation Method:	Minimum Curvature
Wellbore:	Wellbore #1		
Design:	Plan #2 (12-1-11)		

Planned Survey									
Measured Depth (ft)	Inclination (°)	Azimuth (°)	Vertical Depth (ft)	+N/-S (ft)	+E/-W (ft)	Vertical Section (ft)	Dogleg Rate (°/100ft)	Build Rate (°/100ft)	Turn Rate (°/100ft)
2,000.0	14.16	246.78	1,959.6	-139.6	-325.4	354.1	0.00	0.00	0.00
2,040.0	14.16	246.78	1,998.4	-143.5	-334.4	363.9	0.00	0.00	0.00
2,080.0	14.16	246.78	2,037.2	-147.4	-343.4	373.7	0.00	0.00	0.00
2,120.0	14.16	246.78	2,076.0	-151.2	-352.4	383.5	0.00	0.00	0.00
2,160.0	14.16	246.78	2,114.8	-155.1	-361.4	393.3	0.00	0.00	0.00
2,200.0	14.16	246.78	2,153.6	-158.9	-370.4	403.0	0.00	0.00	0.00
2,240.0	14.16	246.78	2,192.4	-162.8	-379.4	412.8	0.00	0.00	0.00
2,280.0	14.16	246.78	2,231.1	-166.6	-388.4	422.6	0.00	0.00	0.00
2,320.0	14.16	246.78	2,269.9	-170.5	-397.4	432.4	0.00	0.00	0.00
2,360.0	14.16	246.78	2,308.7	-174.4	-406.4	442.2	0.00	0.00	0.00
2,400.0	14.16	246.78	2,347.5	-178.2	-415.3	452.0	0.00	0.00	0.00
2,440.0	14.16	246.78	2,386.3	-182.1	-424.3	461.7	0.00	0.00	0.00
2,480.0	14.16	246.78	2,425.1	-185.9	-433.3	471.5	0.00	0.00	0.00
2,520.0	14.16	246.78	2,463.9	-189.8	-442.3	481.3	0.00	0.00	0.00
2,560.0	14.16	246.78	2,502.6	-193.6	-451.3	491.1	0.00	0.00	0.00
2,600.0	14.16	246.78	2,541.4	-197.5	-460.3	500.9	0.00	0.00	0.00
2,640.0	14.16	246.78	2,580.2	-201.4	-469.3	510.7	0.00	0.00	0.00
2,680.0	14.16	246.78	2,619.0	-205.2	-478.3	520.4	0.00	0.00	0.00
2,720.0	14.16	246.78	2,657.8	-209.1	-487.3	530.2	0.00	0.00	0.00
2,760.0	14.16	246.78	2,696.6	-212.9	-496.3	540.0	0.00	0.00	0.00
2,800.0	14.16	246.78	2,735.4	-216.8	-505.3	549.8	0.00	0.00	0.00
2,840.0	14.16	246.78	2,774.1	-220.6	-514.2	559.6	0.00	0.00	0.00
2,880.0	14.16	246.78	2,812.9	-224.5	-523.2	569.4	0.00	0.00	0.00
2,920.0	14.16	246.78	2,851.7	-228.4	-532.2	579.2	0.00	0.00	0.00
2,960.0	14.16	246.78	2,890.5	-232.2	-541.2	588.9	0.00	0.00	0.00
3,000.0	14.16	246.78	2,929.3	-236.1	-550.2	598.7	0.00	0.00	0.00
3,040.0	14.16	246.78	2,968.1	-239.9	-559.2	608.5	0.00	0.00	0.00
3,080.0	14.16	246.78	3,006.8	-243.8	-568.2	618.3	0.00	0.00	0.00
3,120.0	14.16	246.78	3,045.6	-247.7	-577.2	628.1	0.00	0.00	0.00
3,160.0	14.16	246.78	3,084.4	-251.5	-586.2	637.9	0.00	0.00	0.00
3,200.0	14.16	246.78	3,123.2	-255.4	-595.2	647.6	0.00	0.00	0.00
3,240.0	14.16	246.78	3,162.0	-259.2	-604.2	657.4	0.00	0.00	0.00
3,280.0	14.16	246.78	3,200.8	-263.1	-613.1	667.2	0.00	0.00	0.00
3,320.0	14.16	246.78	3,239.6	-266.9	-622.1	677.0	0.00	0.00	0.00
3,360.0	14.16	246.78	3,278.3	-270.8	-631.1	686.8	0.00	0.00	0.00
3,400.0	14.16	246.78	3,317.1	-274.7	-640.1	696.6	0.00	0.00	0.00
3,440.0	14.16	246.78	3,355.9	-278.5	-649.1	706.3	0.00	0.00	0.00
3,480.0	14.16	246.78	3,394.7	-282.4	-658.1	716.1	0.00	0.00	0.00
3,520.0	14.16	246.78	3,433.5	-286.2	-667.1	725.9	0.00	0.00	0.00
3,560.0	14.16	246.78	3,472.3	-290.1	-676.1	735.7	0.00	0.00	0.00
3,600.0	14.16	246.78	3,511.1	-293.9	-685.1	745.5	0.00	0.00	0.00
3,640.0	14.16	246.78	3,549.8	-297.8	-694.1	755.3	0.00	0.00	0.00
3,680.0	14.16	246.78	3,588.6	-301.7	-703.1	765.0	0.00	0.00	0.00
3,699.0	14.16	246.78	3,607.0	-303.5	-707.3	769.7	0.00	0.00	0.00
LARIMER									
3,720.0	14.16	246.78	3,627.4	-305.5	-712.0	774.8	0.00	0.00	0.00
3,760.0	14.16	246.78	3,666.2	-309.4	-721.0	784.6	0.00	0.00	0.00
3,800.0	14.16	246.78	3,705.0	-313.2	-730.0	794.4	0.00	0.00	0.00
3,840.0	14.16	246.78	3,743.8	-317.1	-739.0	804.2	0.00	0.00	0.00
3,880.0	14.16	246.78	3,782.5	-320.9	-748.0	814.0	0.00	0.00	0.00
3,920.0	14.16	246.78	3,821.3	-324.8	-757.0	823.7	0.00	0.00	0.00
3,960.0	14.16	246.78	3,860.1	-328.7	-766.0	833.5	0.00	0.00	0.00
4,000.0	14.16	246.78	3,898.9	-332.5	-775.0	843.3	0.00	0.00	0.00

Database:	Landmark	Local Co-ordinate Reference:	Well Brown 13-8
Company:	BAYSWATER EXPLORATION & PRODUCTION	TVD Reference:	WELL @ 5185.0ft (Original Well Elev)
Project:	SEC.8-T1S-R67W	MD Reference:	WELL @ 5185.0ft (Original Well Elev)
Site:	Brown 13-8 Pad Sec.8-T1S-R67W	North Reference:	True
Well:	Brown 13-8	Survey Calculation Method:	Minimum Curvature
Wellbore:	Wellbore #1		
Design:	Plan #2 (12-1-11)		

Planned Survey									
Measured Depth (ft)	Inclination (°)	Azimuth (°)	Vertical Depth (ft)	+N/-S (ft)	+E/-W (ft)	Vertical Section (ft)	Dogleg Rate (°/100ft)	Build Rate (°/100ft)	Turn Rate (°/100ft)
4,040.0	14.16	246.78	3,937.7	-336.4	-784.0	853.1	0.00	0.00	0.00
4,080.0	14.16	246.78	3,976.5	-340.2	-793.0	862.9	0.00	0.00	0.00
4,120.0	14.16	246.78	4,015.3	-344.1	-802.0	872.7	0.00	0.00	0.00
4,160.0	14.16	246.78	4,054.0	-347.9	-810.9	882.4	0.00	0.00	0.00
4,200.0	14.16	246.78	4,092.8	-351.8	-819.9	892.2	0.00	0.00	0.00
4,240.0	14.16	246.78	4,131.6	-355.7	-828.9	902.0	0.00	0.00	0.00
4,280.0	14.16	246.78	4,170.4	-359.5	-837.9	911.8	0.00	0.00	0.00
4,320.0	14.16	246.78	4,209.2	-363.4	-846.9	921.6	0.00	0.00	0.00
4,360.0	14.16	246.78	4,248.0	-367.2	-855.9	931.4	0.00	0.00	0.00
4,400.0	14.16	246.78	4,286.8	-371.1	-864.9	941.1	0.00	0.00	0.00
4,440.0	14.16	246.78	4,325.5	-375.0	-873.9	950.9	0.00	0.00	0.00
4,480.0	14.16	246.78	4,364.3	-378.8	-882.9	960.7	0.00	0.00	0.00
4,520.0	14.16	246.78	4,403.1	-382.7	-891.9	970.5	0.00	0.00	0.00
4,560.0	14.16	246.78	4,441.9	-386.5	-900.9	980.3	0.00	0.00	0.00
4,600.0	14.16	246.78	4,480.7	-390.4	-909.8	990.1	0.00	0.00	0.00
4,619.2	14.16	246.78	4,499.3	-392.2	-914.2	994.8	0.00	0.00	0.00
4,640.0	13.74	246.78	4,519.5	-394.2	-918.8	999.8	2.00	-2.00	0.00
4,680.0	12.94	246.78	4,558.4	-397.9	-927.2	1,009.0	2.00	-2.00	0.00
4,720.0	12.14	246.78	4,597.4	-401.3	-935.2	1,017.7	2.00	-2.00	0.00
4,760.0	11.34	246.78	4,636.6	-404.5	-942.7	1,025.8	2.00	-2.00	0.00
4,800.0	10.54	246.78	4,675.9	-407.5	-949.7	1,033.4	2.00	-2.00	0.00
4,840.0	9.74	246.78	4,715.3	-410.3	-956.2	1,040.5	2.00	-2.00	0.00
4,880.0	8.94	246.78	4,754.7	-412.8	-962.1	1,047.0	2.00	-2.00	0.00
4,920.0	8.14	246.78	4,794.3	-415.2	-967.6	1,052.9	2.00	-2.00	0.00
4,960.0	7.34	246.78	4,833.9	-417.3	-972.5	1,058.3	2.00	-2.00	0.00
4,978.2	6.98	246.78	4,852.0	-418.2	-974.6	1,060.6	2.00	-2.00	0.00
TERRY									
5,000.0	6.54	246.78	4,873.6	-419.2	-977.0	1,063.1	2.00	-2.00	0.00
5,040.0	5.74	246.78	4,913.4	-420.9	-980.9	1,067.4	2.00	-2.00	0.00
5,080.0	4.94	246.78	4,953.2	-422.3	-984.3	1,071.1	2.00	-2.00	0.00
5,120.0	4.14	246.78	4,993.1	-423.6	-987.2	1,074.3	2.00	-2.00	0.00
5,160.0	3.34	246.78	5,033.0	-424.6	-989.6	1,076.9	2.00	-2.00	0.00
5,200.0	2.54	246.78	5,073.0	-425.4	-991.5	1,078.9	2.00	-2.00	0.00
5,240.0	1.74	246.78	5,112.9	-426.0	-992.9	1,080.4	2.00	-2.00	0.00
5,280.0	0.94	246.78	5,152.9	-426.4	-993.8	1,081.4	2.00	-2.00	0.00
5,320.0	0.14	246.78	5,192.9	-426.5	-994.1	1,081.8	2.00	-2.00	0.00
5,324.1	0.06	246.78	5,197.0	-426.5	-994.1	1,081.8	2.00	-2.00	0.00
TERRY MARKER									
5,327.1	0.00	0.00	5,200.0	-426.5	-994.1	1,081.8	2.00	-2.00	0.00
TARGET BHL 659'FSL, 657'FWL									
5,360.0	0.00	0.00	5,232.9	-426.5	-994.1	1,081.8	0.00	0.00	0.00
5,400.0	0.00	0.00	5,272.9	-426.5	-994.1	1,081.8	0.00	0.00	0.00
5,440.0	0.00	0.00	5,312.9	-426.5	-994.1	1,081.8	0.00	0.00	0.00
5,480.0	0.00	0.00	5,352.9	-426.5	-994.1	1,081.8	0.00	0.00	0.00
5,520.0	0.00	0.00	5,392.9	-426.5	-994.1	1,081.8	0.00	0.00	0.00
5,560.0	0.00	0.00	5,432.9	-426.5	-994.1	1,081.8	0.00	0.00	0.00
5,600.0	0.00	0.00	5,472.9	-426.5	-994.1	1,081.8	0.00	0.00	0.00
5,640.0	0.00	0.00	5,512.9	-426.5	-994.1	1,081.8	0.00	0.00	0.00
5,680.0	0.00	0.00	5,552.9	-426.5	-994.1	1,081.8	0.00	0.00	0.00
5,720.0	0.00	0.00	5,592.9	-426.5	-994.1	1,081.8	0.00	0.00	0.00
5,760.0	0.00	0.00	5,632.9	-426.5	-994.1	1,081.8	0.00	0.00	0.00
5,800.0	0.00	0.00	5,672.9	-426.5	-994.1	1,081.8	0.00	0.00	0.00
5,840.0	0.00	0.00	5,712.9	-426.5	-994.1	1,081.8	0.00	0.00	0.00

Database:	Landmark	Local Co-ordinate Reference:	Well Brown 13-8
Company:	BAYSWATER EXPLORATION & PRODUCTION	TVD Reference:	WELL @ 5185.0ft (Original Well Elev)
Project:	SEC.8-T1S-R67W	MD Reference:	WELL @ 5185.0ft (Original Well Elev)
Site:	Brown 13-8 Pad Sec.8-T1S-R67W	North Reference:	True
Well:	Brown 13-8	Survey Calculation Method:	Minimum Curvature
Wellbore:	Wellbore #1		
Design:	Plan #2 (12-1-11)		

Planned Survey

Measured Depth (ft)	Inclination (°)	Azimuth (°)	Vertical Depth (ft)	+N/-S (ft)	+E/-W (ft)	Vertical Section (ft)	Dogleg Rate (°/100ft)	Build Rate (°/100ft)	Turn Rate (°/100ft)
5,880.0	0.00	0.00	5,752.9	-426.5	-994.1	1,081.8	0.00	0.00	0.00
5,920.0	0.00	0.00	5,792.9	-426.5	-994.1	1,081.8	0.00	0.00	0.00
5,960.0	0.00	0.00	5,832.9	-426.5	-994.1	1,081.8	0.00	0.00	0.00
6,000.0	0.00	0.00	5,872.9	-426.5	-994.1	1,081.8	0.00	0.00	0.00
6,040.0	0.00	0.00	5,912.9	-426.5	-994.1	1,081.8	0.00	0.00	0.00
6,080.0	0.00	0.00	5,952.9	-426.5	-994.1	1,081.8	0.00	0.00	0.00
6,120.0	0.00	0.00	5,992.9	-426.5	-994.1	1,081.8	0.00	0.00	0.00
6,160.0	0.00	0.00	6,032.9	-426.5	-994.1	1,081.8	0.00	0.00	0.00
6,200.0	0.00	0.00	6,072.9	-426.5	-994.1	1,081.8	0.00	0.00	0.00
6,240.0	0.00	0.00	6,112.9	-426.5	-994.1	1,081.8	0.00	0.00	0.00
6,280.0	0.00	0.00	6,152.9	-426.5	-994.1	1,081.8	0.00	0.00	0.00
6,320.0	0.00	0.00	6,192.9	-426.5	-994.1	1,081.8	0.00	0.00	0.00
6,360.0	0.00	0.00	6,232.9	-426.5	-994.1	1,081.8	0.00	0.00	0.00
6,400.0	0.00	0.00	6,272.9	-426.5	-994.1	1,081.8	0.00	0.00	0.00
6,440.0	0.00	0.00	6,312.9	-426.5	-994.1	1,081.8	0.00	0.00	0.00
6,480.0	0.00	0.00	6,352.9	-426.5	-994.1	1,081.8	0.00	0.00	0.00
6,520.0	0.00	0.00	6,392.9	-426.5	-994.1	1,081.8	0.00	0.00	0.00
6,560.0	0.00	0.00	6,432.9	-426.5	-994.1	1,081.8	0.00	0.00	0.00
6,600.0	0.00	0.00	6,472.9	-426.5	-994.1	1,081.8	0.00	0.00	0.00
6,640.0	0.00	0.00	6,512.9	-426.5	-994.1	1,081.8	0.00	0.00	0.00
6,680.0	0.00	0.00	6,552.9	-426.5	-994.1	1,081.8	0.00	0.00	0.00
6,720.0	0.00	0.00	6,592.9	-426.5	-994.1	1,081.8	0.00	0.00	0.00
6,760.0	0.00	0.00	6,632.9	-426.5	-994.1	1,081.8	0.00	0.00	0.00
6,800.0	0.00	0.00	6,672.9	-426.5	-994.1	1,081.8	0.00	0.00	0.00
6,840.0	0.00	0.00	6,712.9	-426.5	-994.1	1,081.8	0.00	0.00	0.00
6,880.0	0.00	0.00	6,752.9	-426.5	-994.1	1,081.8	0.00	0.00	0.00
6,920.0	0.00	0.00	6,792.9	-426.5	-994.1	1,081.8	0.00	0.00	0.00
6,960.0	0.00	0.00	6,832.9	-426.5	-994.1	1,081.8	0.00	0.00	0.00
7,000.0	0.00	0.00	6,872.9	-426.5	-994.1	1,081.8	0.00	0.00	0.00
7,040.0	0.00	0.00	6,912.9	-426.5	-994.1	1,081.8	0.00	0.00	0.00
7,080.0	0.00	0.00	6,952.9	-426.5	-994.1	1,081.8	0.00	0.00	0.00
7,120.0	0.00	0.00	6,992.9	-426.5	-994.1	1,081.8	0.00	0.00	0.00
7,160.0	0.00	0.00	7,032.9	-426.5	-994.1	1,081.8	0.00	0.00	0.00
7,200.0	0.00	0.00	7,072.9	-426.5	-994.1	1,081.8	0.00	0.00	0.00
7,240.0	0.00	0.00	7,112.9	-426.5	-994.1	1,081.8	0.00	0.00	0.00
7,280.0	0.00	0.00	7,152.9	-426.5	-994.1	1,081.8	0.00	0.00	0.00
7,320.0	0.00	0.00	7,192.9	-426.5	-994.1	1,081.8	0.00	0.00	0.00
7,360.0	0.00	0.00	7,232.9	-426.5	-994.1	1,081.8	0.00	0.00	0.00
7,400.0	0.00	0.00	7,272.9	-426.5	-994.1	1,081.8	0.00	0.00	0.00
7,440.0	0.00	0.00	7,312.9	-426.5	-994.1	1,081.8	0.00	0.00	0.00
7,480.0	0.00	0.00	7,352.9	-426.5	-994.1	1,081.8	0.00	0.00	0.00
7,520.0	0.00	0.00	7,392.9	-426.5	-994.1	1,081.8	0.00	0.00	0.00
7,560.0	0.00	0.00	7,432.9	-426.5	-994.1	1,081.8	0.00	0.00	0.00
7,600.0	0.00	0.00	7,472.9	-426.5	-994.1	1,081.8	0.00	0.00	0.00
7,640.0	0.00	0.00	7,512.9	-426.5	-994.1	1,081.8	0.00	0.00	0.00
7,680.0	0.00	0.00	7,552.9	-426.5	-994.1	1,081.8	0.00	0.00	0.00
7,699.1	0.00	0.00	7,572.0	-426.5	-994.1	1,081.8	0.00	0.00	0.00
NOIBRARA - LEGAL BOX 400' X 400' 659'FSL, 657'FWL									
7,720.0	0.00	0.00	7,592.9	-426.5	-994.1	1,081.8	0.00	0.00	0.00
7,760.0	0.00	0.00	7,632.9	-426.5	-994.1	1,081.8	0.00	0.00	0.00
7,800.0	0.00	0.00	7,672.9	-426.5	-994.1	1,081.8	0.00	0.00	0.00
7,840.0	0.00	0.00	7,712.9	-426.5	-994.1	1,081.8	0.00	0.00	0.00

Database:	Landmark	Local Co-ordinate Reference:	Well Brown 13-8
Company:	BAYSWATER EXPLORATION & PRODUCTION	TVD Reference:	WELL @ 5185.0ft (Original Well Elev)
Project:	SEC.8-T1S-R67W	MD Reference:	WELL @ 5185.0ft (Original Well Elev)
Site:	Brown 13-8 Pad Sec.8-T1S-R67W	North Reference:	True
Well:	Brown 13-8	Survey Calculation Method:	Minimum Curvature
Wellbore:	Wellbore #1		
Design:	Plan #2 (12-1-11)		

Planned Survey

Measured Depth (ft)	Inclination (°)	Azimuth (°)	Vertical Depth (ft)	+N/-S (ft)	+E/-W (ft)	Vertical Section (ft)	Dogleg Rate (°/100ft)	Build Rate (°/100ft)	Turn Rate (°/100ft)
7,880.0	0.00	0.00	7,752.9	-426.5	-994.1	1,081.8	0.00	0.00	0.00
7,920.0	0.00	0.00	7,792.9	-426.5	-994.1	1,081.8	0.00	0.00	0.00
7,960.0	0.00	0.00	7,832.9	-426.5	-994.1	1,081.8	0.00	0.00	0.00
8,000.0	0.00	0.00	7,872.9	-426.5	-994.1	1,081.8	0.00	0.00	0.00
8,040.0	0.00	0.00	7,912.9	-426.5	-994.1	1,081.8	0.00	0.00	0.00
8,080.0	0.00	0.00	7,952.9	-426.5	-994.1	1,081.8	0.00	0.00	0.00
8,115.1	0.00	0.00	7,988.0	-426.5	-994.1	1,081.8	0.00	0.00	0.00
FT HAYS									
8,120.0	0.00	0.00	7,992.9	-426.5	-994.1	1,081.8	0.00	0.00	0.00
8,139.1	0.00	0.00	8,012.0	-426.5	-994.1	1,081.8	0.00	0.00	0.00
CODELL									
8,160.0	0.00	0.00	8,032.9	-426.5	-994.1	1,081.8	0.00	0.00	0.00
8,173.1	0.00	0.00	8,046.0	-426.5	-994.1	1,081.8	0.00	0.00	0.00
GREENHORN									
8,200.0	0.00	0.00	8,072.9	-426.5	-994.1	1,081.8	0.00	0.00	0.00
8,240.0	0.00	0.00	8,112.9	-426.5	-994.1	1,081.8	0.00	0.00	0.00
8,259.1	0.00	0.00	8,132.0	-426.5	-994.1	1,081.8	0.00	0.00	0.00
GRANEROS									
8,280.0	0.00	0.00	8,152.9	-426.5	-994.1	1,081.8	0.00	0.00	0.00
8,320.0	0.00	0.00	8,192.9	-426.5	-994.1	1,081.8	0.00	0.00	0.00
8,357.1	0.00	0.00	8,230.0	-426.5	-994.1	1,081.8	0.00	0.00	0.00

Targets

Target Name	Dip Angle (°)	Dip Dir. (°)	TVD (ft)	+N/-S (ft)	+E/-W (ft)	Northing (ft)	Easting (ft)	Latitude	Longitude
- hit/miss target									
- Shape									
TARGET BHL 659'FS	0.00	0.00	5,200.0	-426.5	-994.1	1,233,792.83	3,162,644.23	39.973684	-104.919666
- plan hits target center									
- Point									
LEGAL BOX 400' X 400'	0.00	0.00	7,572.0	-426.5	-994.1	1,233,792.87	3,162,644.25	39.973684	-104.919666
- plan misses target center by 0.1ft at 7699.1ft MD (7572.0 TVD, -426.5 N, -994.1 E)									
- Rectangle (sides W400.0 H400.0 D658.0)									

Casing Points

Measured Depth (ft)	Vertical Depth (ft)	Name	Casing Diameter (")	Hole Diameter (")
1,139.2	1,125.0	8 5/8"	8-5/8	12-1/4

Database:	Landmark	Local Co-ordinate Reference:	Well Brown 13-8
Company:	BAYSWATER EXPLORATION & PRODUCTION	TVD Reference:	WELL @ 5185.0ft (Original Well Elev)
Project:	SEC.8-T1S-R67W	MD Reference:	WELL @ 5185.0ft (Original Well Elev)
Site:	Brown 13-8 Pad Sec.8-T1S-R67W	North Reference:	True
Well:	Brown 13-8	Survey Calculation Method:	Minimum Curvature
Wellbore:	Wellbore #1		
Design:	Plan #2 (12-1-11)		

Formations						
Measured Depth (ft)	Vertical Depth (ft)	Name	Lithology	Dip (°)	Dip Direction (°)	
3,699.0	3,607.0	LARIMER		0.00		
4,978.2	4,852.0	TERRY		0.00		
5,324.1	5,197.0	TERRY MARKER		0.00		
7,699.1	7,572.0	NIOBRARA		0.00		
8,115.1	7,988.0	FT HAYS		0.00		
8,139.1	8,012.0	CODELL		0.00		
8,173.1	8,046.0	GREENHORN		0.00		
8,259.1	8,132.0	GRANEROS		0.00		



Directional

BAYSWATER EXPLORATION & PRODUCTION

SEC.8-T1S-R67W

Brown 13-8 Pad Sec.8-T1S-R67W

Brown 13-8

Wellbore #1

Plan #2 (12-1-11)

Anticollision Report

01 December, 2011

Company:	BAYSWATER EXPLORATION & PRODUCTION	Local Co-ordinate Reference:	Well Brown 13-8
Project:	SEC.8-T1S-R67W	TVD Reference:	WELL @ 5185.0ft (Original Well Elev)
Reference Site:	Brown 13-8 Pad Sec.8-T1S-R67W	MD Reference:	WELL @ 5185.0ft (Original Well Elev)
Site Error:	0.0ft	North Reference:	True
Reference Well:	Brown 13-8	Survey Calculation Method:	Minimum Curvature
Well Error:	0.0ft	Output errors are at	2.00 sigma
Reference Wellbore	Wellbore #1	Database:	Landmark
Reference Design:	Plan #2 (12-1-11)	Offset TVD Reference:	Offset Datum

Reference	Plan #2 (12-1-11)		
Filter type:	NO GLOBAL FILTER: Using user defined selection & filtering criteria		
Interpolation Method:	Stations	Error Model:	ISCWSA
Depth Range:	Unlimited	Scan Method:	Closest Approach 3D
Results Limited by:	Maximum center-center distance of 1,000.0ft	Error Surface:	Elliptical Conic
Warning Levels Evaluated at:	2.00 Sigma		

Survey Tool Program	Date	12/1/2011		
From (ft)	To (ft)	Survey (Wellbore)	Tool Name	Description
0.0	8,357.1	Plan #2 (12-1-11) (Wellbore #1)	MWD	MWD - Standard

Summary						
Site Name	Reference Measured Depth (ft)	Offset Measured Depth (ft)	Distance Between Centres (ft)	Between Ellipses (ft)	Separation Factor	Warning
Brown 13-8 Pad Sec.8-T1S-R67W						
Brown 11-8 - Wellbore #1 - Plan #1 (11-29-11)	200.0	201.0	20.0	19.3	29.504	CC, ES
Brown 11-8 - Wellbore #1 - Plan #1 (11-29-11)	500.0	500.5	31.4	29.4	15.575	SF
Edstrom 24-8 #1 (Exist.) - Wellbore #1 - Design #1	726.1	723.1	86.0	82.7	26.397	CC, ES
Edstrom 24-8 #1 (Exist.) - Wellbore #1 - Design #1	907.9	900.7	94.3	90.0	21.611	SF

Offset Design		Brown 13-8 Pad Sec.8-T1S-R67W - Brown 11-8 - Wellbore #1 - Plan #1 (11-29-11)											Offset Site Error: 0.0 ft	
Survey Program: 0-MWVD													Offset Well Error: 0.0 ft	
Reference		Offset		Semi Major Axis			Distance							
Measured Depth (ft)	Vertical Depth (ft)	Measured Depth (ft)	Vertical Depth (ft)	Reference (ft)	Offset (ft)	Highside Toolface (°)	Offset Wellbore Centre +N/-S (ft)	+E/-W (ft)	Between Centres (ft)	Between Ellipses (ft)	Minimum Separation (ft)	Separation Factor	Warning	
0.0	0.0	1.0	1.0	0.0	0.0	9.70	19.7	3.4	20.0	20.0	0.00	N/A		
100.0	100.0	101.0	101.0	0.1	0.1	9.70	19.7	3.4	20.0	19.7	0.23	87.929		
200.0	200.0	201.0	201.0	0.3	0.3	9.70	19.7	3.4	20.0	19.3	0.68	29.504	CC, ES	
300.0	300.0	301.0	301.0	0.5	0.6	126.91	19.7	3.4	21.0	19.8	1.11	18.824		
400.0	399.8	400.8	400.8	0.8	0.8	136.71	19.7	3.4	24.5	22.9	1.56	15.713		
500.0	499.5	500.5	500.5	1.0	1.0	147.59	19.7	3.4	31.4	29.4	2.02	15.575	SF	
600.0	598.7	599.7	599.7	1.3	1.2	156.40	19.7	3.4	42.2	39.7	2.48	17.034		
700.0	697.5	698.5	698.5	1.6	1.5	162.62	19.7	3.4	56.9	54.0	2.94	19.358		
800.0	795.6	796.6	796.6	2.0	1.7	166.87	19.7	3.4	75.3	71.9	3.40	22.148		
907.9	900.7	901.7	901.7	2.5	1.9	169.99	19.7	3.4	99.3	95.4	3.90	25.443		
1,000.0	990.0	991.0	991.0	3.0	2.1	171.83	19.7	3.4	121.6	117.2	4.33	28.054		
1,100.0	1,087.0	1,088.0	1,088.0	3.5	2.3	173.20	19.7	3.4	145.8	141.0	4.81	30.344		
1,200.0	1,183.9	1,184.9	1,184.9	4.0	2.6	174.17	19.7	3.4	170.1	164.9	5.28	32.209		
1,300.0	1,280.9	1,280.6	1,280.6	4.5	2.8	174.86	19.8	3.4	194.6	188.8	5.76	33.782		
1,400.0	1,377.9	1,372.9	1,372.9	5.0	3.0	174.89	22.3	3.9	220.6	214.4	6.24	35.352		
1,500.0	1,474.8	1,464.2	1,464.0	5.6	3.2	174.36	27.5	4.9	248.6	241.8	6.72	36.966		
1,600.0	1,571.8	1,554.2	1,553.6	6.1	3.4	173.47	35.5	6.4	278.5	271.3	7.21	38.606		
1,700.0	1,668.8	1,642.8	1,641.5	6.6	3.6	172.35	46.1	8.5	310.5	302.7	7.71	40.254		
1,800.0	1,765.7	1,729.8	1,727.6	7.1	3.8	171.10	59.0	11.0	344.5	336.2	8.22	41.896		
1,900.0	1,862.7	1,815.2	1,811.6	7.7	4.1	169.77	74.2	13.9	380.6	371.8	8.75	43.519		
2,000.0	1,959.6	1,900.0	1,894.4	8.2	4.3	168.40	91.8	17.3	418.8	409.5	9.29	45.100		
2,100.0	2,056.6	1,980.7	1,972.8	8.7	4.6	167.08	110.7	21.0	459.2	449.3	9.84	46.665		

CC - Min centre to center distance or convergent point, SF - min separation factor, ES - min ellipse separation

Company:	BAYSWATER EXPLORATION & PRODUCTION	Local Co-ordinate Reference:	Well Brown 13-8
Project:	SEC.8-T1S-R67W	TVD Reference:	WELL @ 5185.0ft (Original Well Elev)
Reference Site:	Brown 13-8 Pad Sec.8-T1S-R67W	MD Reference:	WELL @ 5185.0ft (Original Well Elev)
Site Error:	0.0ft	North Reference:	True
Reference Well:	Brown 13-8	Survey Calculation Method:	Minimum Curvature
Well Error:	0.0ft	Output errors are at	2.00 sigma
Reference Wellbore	Wellbore #1	Database:	Landmark
Reference Design:	Plan #2 (12-1-11)	Offset TVD Reference:	Offset Datum

Offset Design Brown 13-8 Pad Sec.8-T1S-R67W - Brown 11-8 - Wellbore #1 - Plan #1 (11-29-11)												Offset Site Error:	0.0 ft
Survey Program: 0-MWD												Offset Well Error:	0.0 ft
Reference		Offset		Semi Major Axis			Distance						Warning
Measured Depth (ft)	Vertical Depth (ft)	Measured Depth (ft)	Vertical Depth (ft)	Reference (ft)	Offset (ft)	Highside Toolface (°)	Offset Wellbore Centre +N/-S (ft)	Offset Wellbore Centre +E/-W (ft)	Between Centres (ft)	Between Ellipses (ft)	Minimum Separation (ft)	Separation Factor	
2,200.0	2,153.6	2,068.5	2,057.6	9.2	4.9	165.71	132.9	25.3	501.1	490.7	10.43	48.054	
2,300.0	2,250.5	2,158.6	2,144.6	9.8	5.3	164.51	155.8	29.7	543.3	532.3	11.04	49.232	
2,400.0	2,347.5	2,248.7	2,231.7	10.3	5.7	163.48	178.7	34.1	585.7	574.1	11.64	50.312	
2,500.0	2,444.5	2,338.8	2,318.7	10.8	6.1	162.59	201.6	38.5	628.3	616.0	12.26	51.261	
2,600.0	2,541.4	2,428.9	2,405.7	11.4	6.5	161.81	224.6	43.0	670.9	658.0	12.87	52.109	
2,700.0	2,638.4	2,519.0	2,492.7	11.9	6.9	161.12	247.5	47.4	713.6	700.1	13.50	52.871	
2,800.0	2,735.4	2,609.1	2,579.8	12.4	7.3	160.51	270.4	51.8	756.4	742.3	14.12	53.560	
2,900.0	2,832.3	2,699.2	2,666.8	13.0	7.7	159.97	293.3	56.3	799.3	784.5	14.75	54.186	
3,000.0	2,929.3	2,789.3	2,753.8	13.5	8.2	159.48	316.2	60.7	842.2	826.8	15.38	54.755	
3,100.0	3,026.2	2,879.4	2,840.9	14.0	8.6	159.04	339.1	65.1	885.2	869.2	16.01	55.276	
3,200.0	3,123.2	2,969.5	2,927.9	14.5	9.1	158.64	362.0	69.5	928.2	911.5	16.65	55.755	
3,300.0	3,220.2	3,059.6	3,014.9	15.1	9.5	158.27	384.9	74.0	971.2	953.9	17.28	56.197	

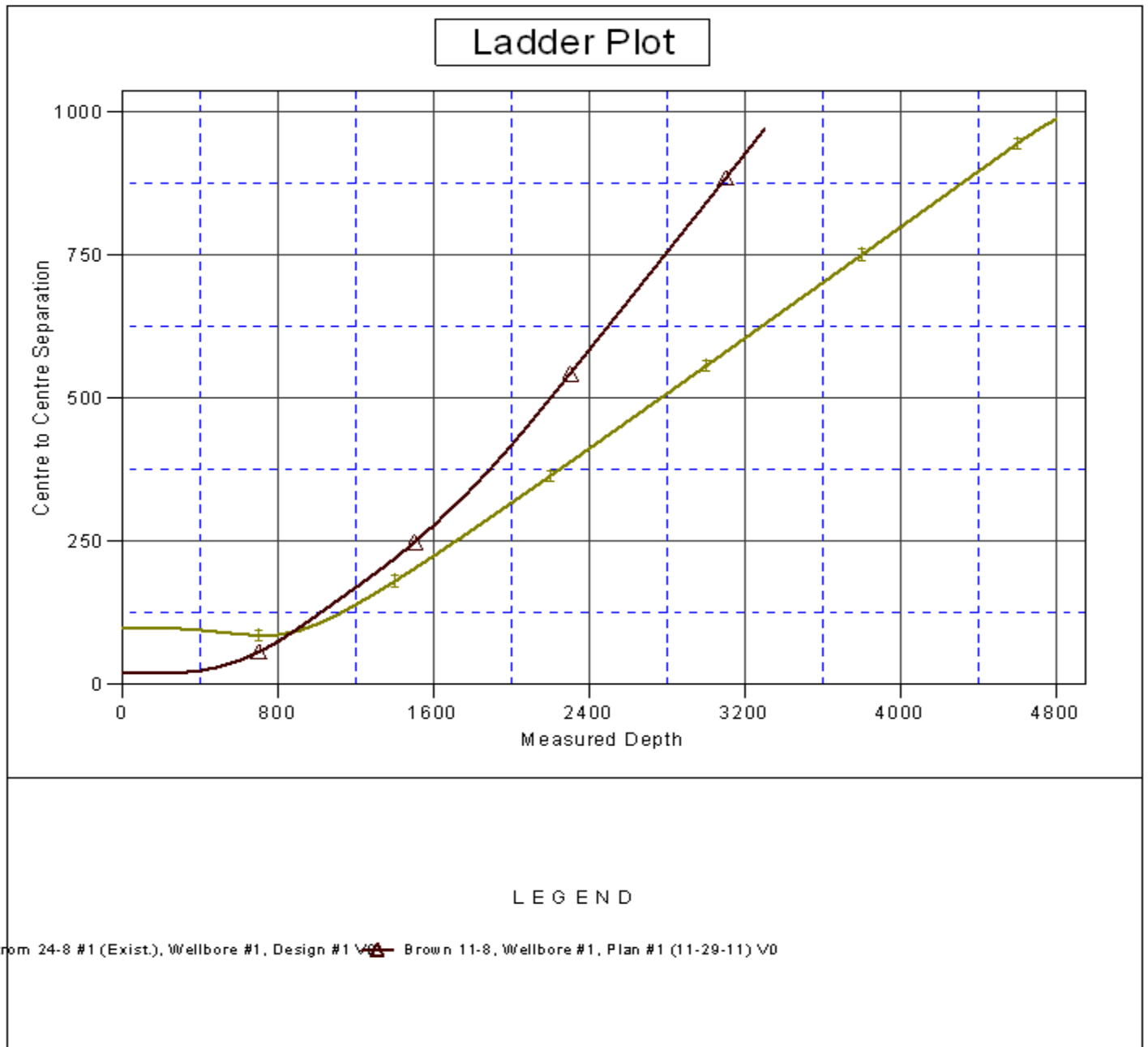
Company:	BAYSWATER EXPLORATION & PRODUCTION	Local Co-ordinate Reference:	Well Brown 13-8
Project:	SEC.8-T1S-R67W	TVD Reference:	WELL @ 5185.0ft (Original Well Elev)
Reference Site:	Brown 13-8 Pad Sec.8-T1S-R67W	MD Reference:	WELL @ 5185.0ft (Original Well Elev)
Site Error:	0.0ft	North Reference:	True
Reference Well:	Brown 13-8	Survey Calculation Method:	Minimum Curvature
Well Error:	0.0ft	Output errors are at	2.00 sigma
Reference Wellbore	Wellbore #1	Database:	Landmark
Reference Design:	Plan #2 (12-1-11)	Offset TVD Reference:	Offset Datum

Offset Design Brown 13-8 Pad Sec.8-T1S-R67W - Edstrom 24-8 #1 (Exist.) - Wellbore #1 - Design #1													Offset Site Error:	0.0 ft
Survey Program: 0-MWD													Offset Well Error:	0.0 ft
Reference		Offset		Semi Major Axis			Distance							Warning
Measured Depth (ft)	Vertical Depth (ft)	Measured Depth (ft)	Vertical Depth (ft)	Reference (ft)	Offset (ft)	Highside Toolface (°)	Offset Wellbore Centre +N/-S (ft)	+E/-W (ft)	Between Centres (ft)	Between Ellipses (ft)	Minimum Separation (ft)	Separation Factor		
0.0	0.0	0.0	0.0	0.0	0.0	-173.96	-98.0	-10.4	98.5					
100.0	100.0	100.0	100.0	0.1	0.1	-173.96	-98.0	-10.4	98.5	98.3	0.22	438.392		
200.0	200.0	200.0	200.0	0.3	0.3	-173.96	-98.0	-10.4	98.5	97.9	0.67	146.131		
300.0	300.0	300.0	300.0	0.5	0.6	-61.64	-98.0	-10.4	97.7	96.6	1.11	87.983		
400.0	399.8	399.8	399.8	0.8	0.8	-64.45	-98.0	-10.4	95.3	93.8	1.55	61.405		
500.0	499.5	499.5	499.5	1.0	1.0	-69.41	-98.0	-10.4	91.9	89.9	2.02	45.434		
600.0	598.7	598.7	598.7	1.3	1.2	-76.85	-98.0	-10.4	88.3	85.8	2.53	34.869		
700.0	697.5	697.5	697.5	1.6	1.5	-86.95	-98.0	-10.4	86.1	83.0	3.10	27.805		
726.1	723.1	723.1	723.1	1.7	1.5	-90.00	-98.0	-10.4	86.0	82.7	3.26	26.397 CC, ES		
800.0	795.6	795.6	795.6	2.0	1.7	-99.33	-98.0	-10.4	87.2	83.5	3.70	23.530		
907.9	900.7	900.7	900.7	2.5	1.9	-113.66	-98.0	-10.4	94.3	90.0	4.36	21.611 SF		
1,000.0	990.0	990.0	990.0	3.0	2.1	-124.70	-98.0	-10.4	105.6	100.7	4.88	21.639		
1,100.0	1,087.0	1,087.0	1,087.0	3.5	2.3	-134.08	-98.0	-10.4	121.5	116.1	5.38	22.559		
1,200.0	1,183.9	1,183.9	1,183.9	4.0	2.5	-141.21	-98.0	-10.4	139.8	134.0	5.86	23.881		
1,300.0	1,280.9	1,280.9	1,280.9	4.5	2.8	-146.66	-98.0	-10.4	159.8	153.5	6.31	25.322		
1,400.0	1,377.9	1,377.9	1,377.9	5.0	3.0	-150.89	-98.0	-10.4	180.9	174.2	6.77	26.746		
1,500.0	1,474.8	1,474.8	1,474.8	5.6	3.2	-154.23	-98.0	-10.4	202.8	195.6	7.22	28.092		
1,600.0	1,571.8	1,571.8	1,571.8	6.1	3.4	-156.93	-98.0	-10.4	225.2	217.5	7.68	29.338		
1,700.0	1,668.8	1,668.8	1,668.8	6.6	3.6	-159.14	-98.0	-10.4	248.0	239.8	8.14	30.479		
1,800.0	1,765.7	1,765.7	1,765.7	7.1	3.9	-160.97	-98.0	-10.4	271.0	262.4	8.60	31.519		
1,900.0	1,862.7	1,862.7	1,862.7	7.7	4.1	-162.52	-98.0	-10.4	294.3	285.3	9.07	32.465		
2,000.0	1,959.6	1,959.6	1,959.6	8.2	4.3	-163.84	-98.0	-10.4	317.8	308.3	9.54	33.326		
2,100.0	2,056.6	2,056.6	2,056.6	8.7	4.5	-164.98	-98.0	-10.4	341.4	331.4	10.01	34.111		
2,200.0	2,153.6	2,153.6	2,153.6	9.2	4.7	-165.97	-98.0	-10.4	365.1	354.7	10.48	34.828		
2,300.0	2,250.5	2,250.5	2,250.5	9.8	4.9	-166.85	-98.0	-10.4	389.0	378.0	10.96	35.485		
2,400.0	2,347.5	2,347.5	2,347.5	10.3	5.2	-167.62	-98.0	-10.4	412.8	401.4	11.44	36.087		
2,500.0	2,444.5	2,444.5	2,444.5	10.8	5.4	-168.30	-98.0	-10.4	436.8	424.9	11.92	36.642		
2,600.0	2,541.4	2,541.4	2,541.4	11.4	5.6	-168.92	-98.0	-10.4	460.8	448.4	12.40	37.154		
2,700.0	2,638.4	2,638.4	2,638.4	11.9	5.8	-169.48	-98.0	-10.4	484.9	472.0	12.89	37.627		
2,800.0	2,735.4	2,735.4	2,735.4	12.4	6.0	-169.98	-98.0	-10.4	508.9	495.6	13.37	38.066		
2,900.0	2,832.3	2,832.3	2,832.3	13.0	6.3	-170.43	-98.0	-10.4	533.1	519.2	13.86	38.474		
3,000.0	2,929.3	2,929.3	2,929.3	13.5	6.5	-170.85	-98.0	-10.4	557.2	542.9	14.34	38.854		
3,100.0	3,026.2	3,026.2	3,026.2	14.0	6.7	-171.24	-98.0	-10.4	581.4	566.6	14.83	39.209		
3,200.0	3,123.2	3,123.2	3,123.2	14.5	6.9	-171.59	-98.0	-10.4	605.6	590.3	15.32	39.541		
3,300.0	3,220.2	3,220.2	3,220.2	15.1	7.1	-171.91	-98.0	-10.4	629.8	614.0	15.80	39.852		
3,400.0	3,317.1	3,317.1	3,317.1	15.6	7.3	-172.21	-98.0	-10.4	654.1	637.8	16.29	40.144		
3,500.0	3,414.1	3,414.1	3,414.1	16.1	7.6	-172.49	-98.0	-10.4	678.3	661.5	16.78	40.418		
3,600.0	3,511.1	3,511.1	3,511.1	16.7	7.8	-172.75	-98.0	-10.4	702.6	685.3	17.27	40.677		
3,700.0	3,608.0	3,608.0	3,608.0	17.2	8.0	-173.00	-98.0	-10.4	726.9	709.1	17.76	40.921		
3,800.0	3,705.0	3,705.0	3,705.0	17.7	8.2	-173.22	-98.0	-10.4	751.2	732.9	18.25	41.151		
3,900.0	3,801.9	3,801.9	3,801.9	18.3	8.4	-173.44	-98.0	-10.4	775.5	756.7	18.74	41.369		
4,000.0	3,898.9	3,898.9	3,898.9	18.8	8.7	-173.64	-98.0	-10.4	799.8	780.5	19.24	41.576		
4,100.0	3,995.9	3,995.9	3,995.9	19.3	8.9	-173.83	-98.0	-10.4	824.1	804.4	19.73	41.772		
4,200.0	4,092.8	4,092.8	4,092.8	19.9	9.1	-174.00	-98.0	-10.4	848.4	828.2	20.22	41.958		
4,300.0	4,189.8	4,189.8	4,189.8	20.4	9.3	-174.17	-98.0	-10.4	872.8	852.0	20.71	42.136		
4,400.0	4,286.8	4,286.8	4,286.8	20.9	9.5	-174.33	-98.0	-10.4	897.1	875.9	21.21	42.304		
4,500.0	4,383.7	4,383.7	4,383.7	21.5	9.7	-174.48	-98.0	-10.4	921.4	899.7	21.70	42.465		
4,600.0	4,480.7	4,480.7	4,480.7	22.0	10.0	-174.62	-98.0	-10.4	945.8	923.6	22.19	42.618		
4,619.2	4,499.3	4,499.3	4,499.3	22.1	10.0	-174.65	-98.0	-10.4	950.5	928.2	22.29	42.647		
4,700.0	4,577.9	4,577.9	4,577.9	22.4	10.2	-174.79	-98.0	-10.4	969.1	946.3	22.72	42.658		
4,800.0	4,675.9	4,675.9	4,675.9	22.8	10.4	-174.93	-98.0	-10.4	989.0	965.8	23.20	42.634		

CC - Min centre to center distance or convergent point, SF - min separation factor, ES - min ellipse separation

Company:	BAYSWATER EXPLORATION & PRODUCTION	Local Co-ordinate Reference:	Well Brown 13-8
Project:	SEC.8-T1S-R67W	TVD Reference:	WELL @ 5185.0ft (Original Well Elev)
Reference Site:	Brown 13-8 Pad Sec.8-T1S-R67W	MD Reference:	WELL @ 5185.0ft (Original Well Elev)
Site Error:	0.0ft	North Reference:	True
Reference Well:	Brown 13-8	Survey Calculation Method:	Minimum Curvature
Well Error:	0.0ft	Output errors are at	2.00 sigma
Reference Wellbore	Wellbore #1	Database:	Landmark
Reference Design:	Plan #2 (12-1-11)	Offset TVD Reference:	Offset Datum

Reference Depths are relative to WELL @ 5185.0ft (Original Well Elev) Coordinates are relative to: Brown 13-8
Offset Depths are relative to Offset Datum
Central Meridian is -105.500000 °
Coordinate System is US State Plane 1983, Colorado Northern Zone
Grid Convergence at Surface is: 0.38°



Company:	BAYSWATER EXPLORATION & PRODUCTION	Local Co-ordinate Reference:	Well Brown 13-8
Project:	SEC.8-T1S-R67W	TVD Reference:	WELL @ 5185.0ft (Original Well Elev)
Reference Site:	Brown 13-8 Pad Sec.8-T1S-R67W	MD Reference:	WELL @ 5185.0ft (Original Well Elev)
Site Error:	0.0ft	North Reference:	True
Reference Well:	Brown 13-8	Survey Calculation Method:	Minimum Curvature
Well Error:	0.0ft	Output errors are at	2.00 sigma
Reference Wellbore	Wellbore #1	Database:	Landmark
Reference Design:	Plan #2 (12-1-11)	Offset TVD Reference:	Offset Datum

Reference Depths are relative to WELL @ 5185.0ft (Original Well Elev) Coordinates are relative to: Brown 13-8
 Offset Depths are relative to Offset Datum Coordinate System is US State Plane 1983, Colorado Northern Zone
 Central Meridian is -105.500000 ° Grid Convergence at Surface is: 0.38°

