
BILL BARRETT CORPORATION E-BILL

**Kaufman 42B-25-692
MAMM CREEK
Garfield County , Colorado**

**Cement Surface Casing
31-Aug-2011**

Job Site Documents

The Road to Excellence Starts with Safety

Sold To #: 343492		Ship To #: 2848848		Quote #:		Sales Order #: 8336547	
Customer: BILL BARRETT CORPORATION E-BILL				Customer Rep: Henderson, Josh			
Well Name: Kaufman			Well #: 42B-25-692			API/UWI #: 05-045-19691	
Field: MAMM CREEK		City (SAP): SILT		County/Parish: Garfield			State: Colorado
Lat: N 39.503 deg. OR N 39 deg. 30 min. 10.991 secs.				Long: W 107.605 deg. OR W -108 deg. 23 min. 43.692 secs.			
Contractor: ProPetro Services Inc.			Rig/Platform Name/Num: ProPetro				
Job Purpose: Cement Surface Casing							
Well Type: Development Well			Job Type: Cement Surface Casing				
Sales Person: METLI, MARSHALL			Srvc Supervisor: HUGENTOBLE, LOGAN			MBU ID Emp #: 447333	

Job Personnel

HES Emp Name	Exp Hrs	Emp #	HES Emp Name	Exp Hrs	Emp #	HES Emp Name	Exp Hrs	Emp #
HUGENTOBLE, LOGAN Mark	8	447333	LESTER, LEVI William	8	474117	SIMINEO, JEROD M	8	479954

Equipment

HES Unit #	Distance-1 way	HES Unit #	Distance-1 way	HES Unit #	Distance-1 way	HES Unit #	Distance-1 way
10867425	120 mile	10897891	120 mile	10951247	120 mile	11560046	120 mile
11562538	120 mile						

Job Hours

Date	On Location Hours	Operating Hours	Date	On Location Hours	Operating Hours	Date	On Location Hours	Operating Hours
8/31/11	8	1						
TOTAL			Total is the sum of each column separately					

Job

Formation Name	Top	Bottom	Called Out	Date	Time	Time Zone
Formation Depth (MD)			On Location	31 - Aug - 2011	12:00	MST
Form Type		BHST	Job Started	31 - Aug - 2011	16:00	MST
Job depth MD	810. ft	Job Depth TVD	Job Completed	31 - Aug - 2011	18:18	MST
Water Depth		Wk Ht Above Floor	Deparated Loc	31 - Aug - 2011	19:14	MST
Perforation Depth (MD)	From	To		31 - Aug - 2011	21:00	MST

Well Data

Description	New / Used	Max pressure psig	Size in	ID in	Weight lbm/ft	Thread	Grade	Top MD ft	Bottom MD ft	Top TVD ft	Bottom TVD ft
12 1/4" Open Hole				12.25				.	800.		
9 5/8" Surface Casing	New		9.625	8.921	36.		J-55	.	800.		

Sales/Rental/3rd Party (HES)

Description	Qty	Qty uom	Depth	Supplier
PLUG,CMTG,TOP,9 5/8,HWE,8.16 MIN/9.06 MA	1	EA		

Tools and Accessories

Type	Size	Qty	Make	Depth	Type	Size	Qty	Make	Type	Size	Qty	Make
Guide Shoe					Packer				Top Plug	9.625	1	HES
Float Shoe					Bridge Plug				Bottom Plug			
Float Collar					Retainer				SSR plug set			
Insert Float									Plug Container	9.625	1	HES
Stage Tool									Centralizers			

Miscellaneous Materials

Gelling Agt	Conc	Surfactant	Conc	Acid Type	Qty	Conc	%
Treatment Fld	Conc	Inhibitor	Conc	Sand Type	Size		Qty

Fluid Data

Stage/Plug #: 1

Fluid #	Stage Type	Fluid Name	Qty	Qty uom	Mixing Density lbm/gal	Yield ft ³ /sk	Mix Fluid Gal/sk	Rate bbl/min	Total Mix Fluid Gal/sk
1	Water Spacer		10.00	bbl	.	.0	.0	5	
2	VersaCem Lead Cement	VERSACEM (TM) SYSTEM (452010)	120.0	sacks	12.3	2.38	13.77	5	13.77
	13.77 Gal	FRESH WATER							
3	SwiftCem Tail Cement	SWIFTCEM (TM) SYSTEM (452990)	120.0	sacks	14.2	1.43	6.85	5	6.85
	6.85 Gal	FRESH WATER							
4	Displacement		58.00	bbl	.	.0	.0	6	
Calculated Values		Pressures		Volumes					
Displacement	58	Shut In: Instant		Lost Returns	0	Cement Slurry	80	Pad	
Top Of Cement	SURFACE	5 Min		Cement Returns	25	Actual Displacement	58	Treatment	
Frac Gradient		15 Min		Spacers	20	Load and Breakdown		Total Job	
Rates									
Circulating		Mixing	5	Displacement	6	Avg. Job		5	
Cement Left In Pipe	Amount	45 ft	Reason	Shoe Joint					
Frac Ring # 1 @	ID	Frac ring # 2 @	ID	Frac Ring # 3 @	ID	Frac Ring # 4 @	ID		
The Information Stated Herein Is Correct				Customer Representative Signature					

The Road to Excellence Starts with Safety

Sold To #: 343492	Ship To #: 2848848	Quote #:	Sales Order #: 8336547
Customer: BILL BARRETT CORPORATION E-BILL		Customer Rep: Henderson, Josh	
Well Name: Kaufman	Well #: 42B-25-692	API/UWI #: 05-045-19691	
Field: MAMM CREEK	City (SAP): SILT	County/Parish: Garfield	State: Colorado
Legal Description:			
Lat: N 39.503 deg. OR N 39 deg. 30 min. 10.991 secs.		Long: W 107.605 deg. OR W -108 deg. 23 min. 43.692 secs.	
Contractor: ProPetro Services Inc.		Rig/Platform Name/Num: ProPetro	
Job Purpose: Cement Surface Casing			Ticket Amount:
Well Type: Development Well		Job Type: Cement Surface Casing	
Sales Person: METLI, MARSHALL		Srvc Supervisor: HUGENTOBLE, LOGAN	MBU ID Emp #: 447333

Activity Description	Date/Time	Cht #	Rate bbl/min	Volume bbl		Pressure psig		Comments
				Stage	Total	Tubing	Casing	
Call Out	08/31/2011 12:00							
Pre-Convoy Safety Meeting	08/31/2011 14:00							ALL HES EMPLOYEES
Arrive At Loc	08/31/2011 16:00							RIG STILL RUNNING CASING
Assessment Of Location Safety Meeting	08/31/2011 17:00							ALL HES EMPLOYEES
Rig-Up Equipment	08/31/2011 17:15							1 HT-400 PUMP TRUCK, 1 660 BULK TRUCK, 1 F-450 P/U, 1 PLUG CONTAINER
Pre-Job Safety Meeting	08/31/2011 18:00							ALL HES EMPLOYEES, RIG CREW, CO REP AND ANY 3RD PARTY VENDORS
Start Job	08/31/2011 18:18							TP 797 FT, TD 810FT, FC 749 FT, HOLE 12.25", MUD WT AIR, RATE WILL BE 5, WILL BUMP 500 PSI OVER LAND PSI
Pump Water	08/31/2011 18:19		2	2			18.0	FILL LINES PRIOR TO PRESSURE TESTING LINES
Pressure Test	08/31/2011 18:22							NO LEAKS, KICK OUTS SET TO 4000 PSI FOR TEST.
Pump Spacer 1	08/31/2011 18:27		5	20			58.0	FRESH WATER
Activity Description	Date/Time	Cht #	Rate bbl/min	Volume bbl		Pressure psig		Comments
				Stage	Total	Tubing	Casing	

Pump Lead Cement	08/31/2011 18:35		5	50			87.0	120 SKS VERSACEM CMT TO BE MIXED AT 12.3 PPG, 2.38 YIELD, 13.77 GAL/SK, CMT TO BE WEIGHED VIA PRESSURE BALANCED MUD SCALES WET AND DRY SAMPLES SUBMITTED.
Pump Tail Cement	08/31/2011 18:46		5	30			145.0	120 SKS SWIFTCM CMT TO BE MIXED AT 14.2 PPG, 1.43 YIELD, 6.85 GAL/SK, CMT TO BE WEIGHED VIA PRESSURE BALANCED MUD SCALES, WET AND DRY SAMPLES SUBMITTED,
Shutdown	08/31/2011 18:53							
Drop Plug	08/31/2011 18:58							PLUG LAUNCHED
Pump Displacement	08/31/2011 18:58		6	58			244.0	FRESH WATER
Slow Rate	08/31/2011 19:07		4				253.0	10 BBLS PRIOR TO CALCULATED DISPLACEMENT
Bump Plug	08/31/2011 19:10						832.0	PLUG LANDED
Check Floats	08/31/2011 19:13							FLOATS HOLDING, 25 BBLS CEMENT TO SURFACE
End Job	08/31/2011 19:14							THANK YOU FOR USING HES LOGAN HUGENTOBLE AND CREW
Post-Job Safety Meeting (Pre Rig-Down)	08/31/2011 19:20							ALL HES EMPLOYEES
Rig-Down Equipment	08/31/2011 19:30							
Pre-Convoy Safety Meeting	08/31/2011 20:50							ALL HES EMPLOYEES
Crew Leave Location	08/31/2011 21:00							LOCATION CLEAN

JOB PROCEDURE

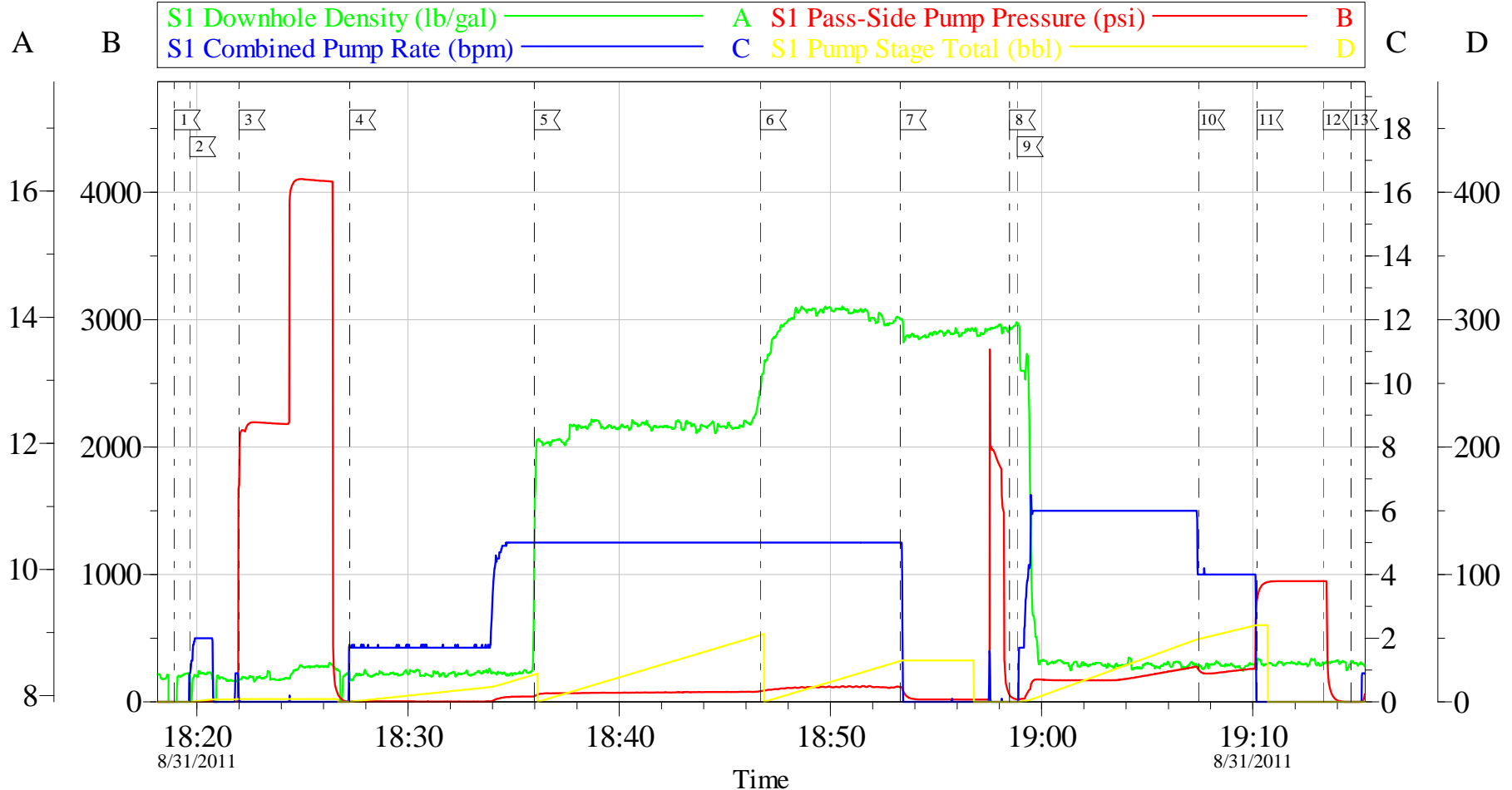
Pro Petro

Pre-Planned Job Procedure Surface Pipe

EVENT #	EVENT	VOLUME	SACKS	WEIGHT	YIELD	GAL/ SK
1	Start Job		DENSITY OVER RATE			
6	Test Lines	4000				
10	H2O Spacer	20.0		8.33		
	Lead Cement	50.9	120	12.3	2.38	13.75
15	Tail Cement	30.6	120	14.2	1.43	6.85
	Shut Down		500 psi over			
22	Drop Plug					
	Slow Rate	47.9				
23	Displace W/H2O	57.9				
26	Land Plug	194.0				
2	End Job					
			Do Not Overdisplace			
DISPLACEMENT	TOTAL PIPE	SHOE JOINT LENGTH		FLOAT COLLAR	BBL/FT	H2O REQ.
57.90	794	45.00		749.00	0.0773	151
PSI to Lift Pipe	393	*****Use Mud Scales on Each Tier*****				
Total Displacement	57.90					
CALCULATED DIFFERENTIAL PSI		194		TOTAL FLUID PUMPED		159
Collapse	1400	Burst	2270		SO#	8336547

BILL BARRETT

9.625" SURFACE



Local Event Log

1 START JOB	18:18:56	2 PRIME LINES	18:19:40	3 PRESSURE TEST	18:22:00
4 PUMP H2O SPACER	18:27:14	5 PUMP LEAD CEMENT	18:35:59	6 PUMP TAIL CEMENT	18:46:41
7 SHUTDOWN	18:53:18	8 DROP PLUG	18:58:29	9 PUMP DISPLACEMENT	18:58:51
10 SLOW RATE	19:07:26	11 BUMP PLUG	19:10:12	12 CHECK FLOATS	19:13:20
13 END JOB	19:14:39				

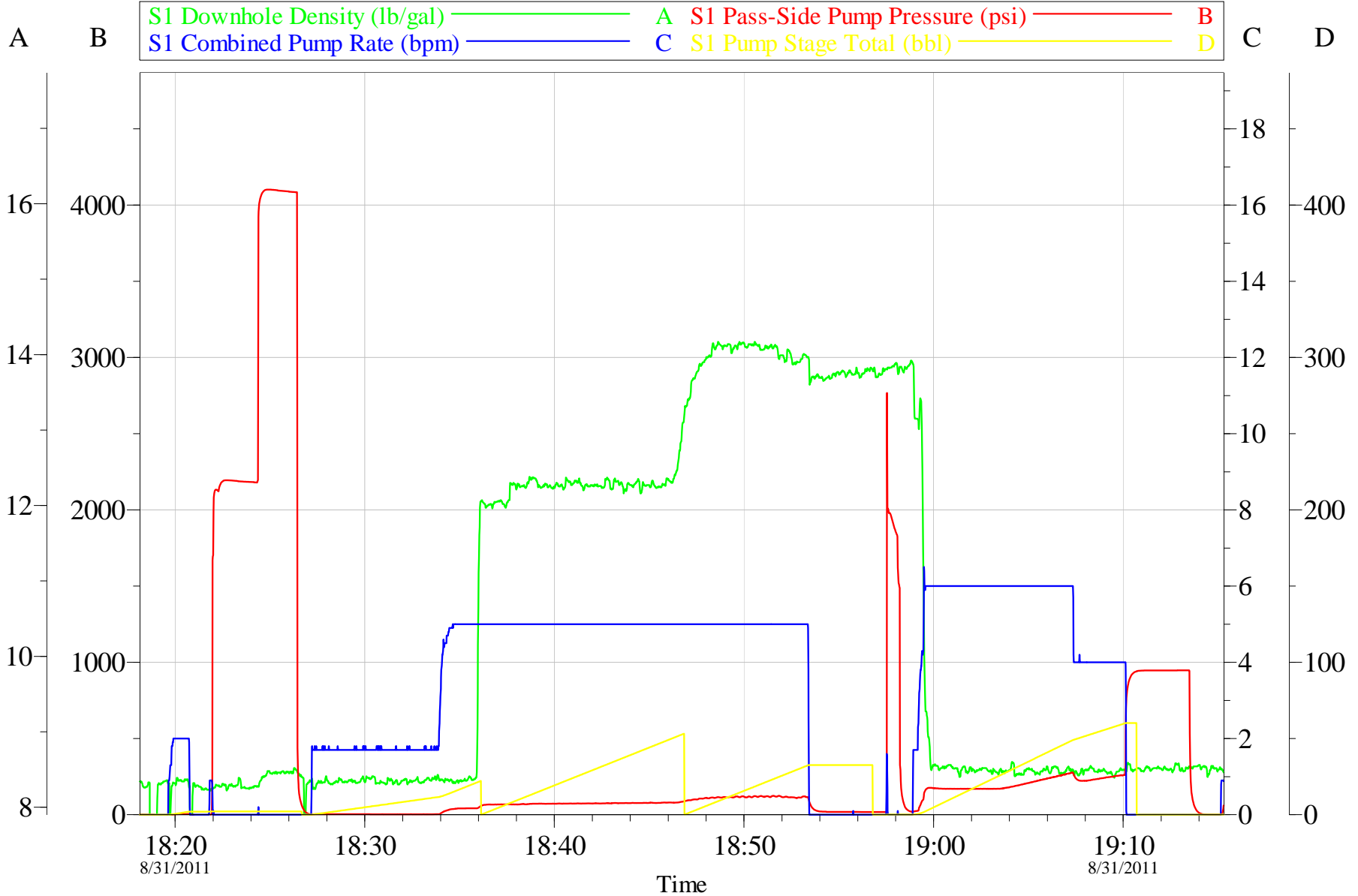
Customer: BILL BARRETT
 Well Description: KAUFMAN 42B
 Company Rep: JOSH HENDERSON

Job Date: 31-Aug-2011
 Job Type: SURFACE
 Cement Supervisor: LOGAN HUGENTOBLER

Sales Order #: 8336547
 ADC Used: YES
 Elite #5 / Operator: JEROD SIMINEO

OptiCem v6.4.10
 31-Aug-11 19:30

BILL BARRETT
9.625" SURFACE



Customer: BILL BARRETT
Well Description: KAUFMAN 42B
Company Rep: JOSH HENDERSON

Job Date: 31-Aug-2011
Job Type: SURFACE
Cement Supervisor: LOGAN HUGENTOBLE

Sales Order #: 8336547
ADC Used: YES
Elite #5 / Operator: JEROD SIMINEO

OptiCem v6.4.10
31-Aug-11 19:30

HALLIBURTON

Water Analysis Report

Company: BILL BARRETT

Submitted by: LOGAN HUGENTOBLER

Attention:

Lease KAUFMAN

Well # 42B-25-692

Date: 9/1/2011

Date Rec.: 9/1/2011

S.O.# 8336547

Job Type: 9.625 SURFACE

Specific Gravity	<i>MAX</i>	1
pH	<i>8</i>	7
Potassium (K)	<i>5000</i>	0 Mg / L
Calcium (Ca)	<i>500</i>	190 Mg / L
Iron (FE2)	<i>300</i>	0 Mg / L
Chlorides (Cl)	<i>3000</i>	0 Mg / L
Sulfates (SO ₄)	<i>1500</i>	below 200 Mg / L
Chlorine (Cl ₂)		0 Mg / L
Temp	<i>40-80</i>	65 Deg
Total Dissolved Solids		310 Mg / L

Respectfully: LOGAN HUGENTOBLER

Title: CEMENTING SUPERVISOR

Location: Grand Junction, CO

NOTICE:

This report is limited to the described sample tested. Any person using or relying on this report agrees that Halliburton shall not be liable for any loss or damage whether due to act or omission resulting from such report or

Sales Order #: 8336547	Line Item: 10	Survey Conducted Date: 8/31/2011
Customer: BILL BARRETT CORPORATION E-BILL		Job Type (BOM): CMT SURFACE CASING BOM
Customer Representative: JOSH HENDERSON		API / UWI: (leave blank if unknown) 05-045-19691
Well Name: Kaufman		Well Number: 42B-25-692
Well Type: Development Well	Well Country: United States of America	
H2S Present: No	Well State: Colorado	Well County: Garfield

Dear Customer,

We hope that you were satisfied with the service quality of this job performed by Halliburton. It is the aim of our management and service personnel to deliver equipment and service of a standard unmatched in the service sector of the energy industry.

Please take the time to let us know if our performance met with your satisfaction. Please be as critical as possible to ensure we constantly improve our service. Your comments are of great value to us and are intended for the exclusive use of Halliburton.

CUSTOMER SATISFACTION SURVEY

CATEGORY	CUSTOMER SATISFACTION RESPONSE	
Survey Conducted Date	The date the survey was conducted	8/31/2011
Survey Interviewer	The survey interviewer is the person who initiated the survey.	LOGAN HUGENTOBLE (HB15210)
Customer Participation	Did the customer participate in this survey? (Y/N)	Yes
Customer Representative	Enter the Customer representative name	JOSH HENDERSON
HSE	Was our HSE performance satisfactory? Circle Y or N	Yes
Equipment	Were you satisfied with our Equipment? Circle Y or N	Yes
Personnel	Were you satisfied with our people? Circle Y or N	Yes
Customer Comment	Customer's Comment	
Job DVA	Did we provide job DVA above our normal service today? Circle Y or N	No
Time	Please enter hours in decimal format to nearest quarter hour.	
Other	Enter short text for other efficiencies gained.	
Customer Initials	Customer's Initials	
Please provide details	Please describe how the job efficiencies were gained.	

CUSTOMER SIGNATURE

Sales Order #: 8336547	Line Item: 10	Survey Conducted Date: 8/31/2011
Customer: BILL BARRETT CORPORATION E-BILL		Job Type (BOM): CMT SURFACE CASING BOM
Customer Representative: JOSH HENDERSON		API / UWI: (leave blank if unknown) 05-045-19691
Well Name: Kaufman		Well Number: 42B-25-692
Well Type: Development Well	Well Country: United States of America	
H2S Present: No	Well State: Colorado	Well County: Garfield

KEY PERFORMANCE INDICATORS

General	
Survey Conducted Date	8/31/2011
The date the survey was conducted	

Cementing KPI Survey	
Type of Job	0
Select the type of job. (Cementing or Non-Cementing)	
Select the Maximum Deviation range for this Job	Vertical
What is the highest deviation for the job you just completed? This may not be the maximum well deviation.	
Total Operating Time (hours)	8
Total Operating Hours Including Rig-up, Pumping, Rig-down. Enter in decimal format.	
HSE Incident, Accident, Injury	No
HSE Incident, Accident, Injury. This should be recordable incidents only.	
Was the job purpose achieved?	Yes
Was the job delivered correctly as per customer agreed design?	
Operating Hours (Pumping Hours)	1
Total number of hours pumping fluid on this job. Enter in decimal format.	
Customer Non-Productive Rig Time (hrs)	0
Lost time due to Halliburton in the start, execution, or completion of an ordered service or product, or delays in a follow-on service. Enter in decimal format. 0 if none.	
Type of Rig Classification Job Was Performed	Drilling Rig (Portable)
Type Of Rig (classification) Job Was Performed On	
Number Of JSAs Performed	6
Number Of Jsas Performed	
Number of Unplanned Shutdowns	0
Unplanned shutdown is when injection stops for any period of time.	
Was this a Primary Cement Job (Yes / No)	Yes

Sales Order #: 8336547	Line Item: 10	Survey Conducted Date: 8/31/2011
Customer: BILL BARRETT CORPORATION E-BILL		Job Type (BOM): CMT SURFACE CASING BOM
Customer Representative: JOSH HENDERSON		API / UWI: (leave blank if unknown) 05-045-19691
Well Name: Kaufman		Well Number: 42B-25-692
Well Type: Development Well	Well Country: United States of America	
H2S Present: No	Well State: Colorado	Well County: Garfield

Primary Cement Job= Casing job, Liner job, or Tie-back job.	
Did We Run Wiper Plugs? Did We Run Top And Bottom Casing Wiper Plugs?	Top
Mixing Density of Job Stayed in Designed Density Range (0-100%) Density Range defined as +/- .20 ppg. Calculation: Total BBLs cement mixed at designed density divided by total BBLs of cement multiplied by 100	98
Was Automated Density Control Used? Was Automated Density Control (ADC) Used ?	Yes
Pump Rate (percent) of Job Stayed At Designed Pump Rate Pump Rate range defined as +/- 1bbl/min. Calculation: Total BBLs of fluid pumped at the designed rate divided by Total BBLs of fluid pumped, multiplied by 100	98
Nbr of Remedial Sqz Jobs Rqd - Competition Number Of Remedial Squeeze Jobs Required After Primary Job Performed By Competition	0
Nbr of Remedial Plug Jobs Rqd - HES Number Of Remedial Plug Jobs Needed After Primary Plug Pumped By HES	0
Nbr of Remedial Sqz Jobs Rqd - HES Number Of Remedial Squeeze Jobs Required After Primary Job Performed By HES	0