

OXY USA WTP LP

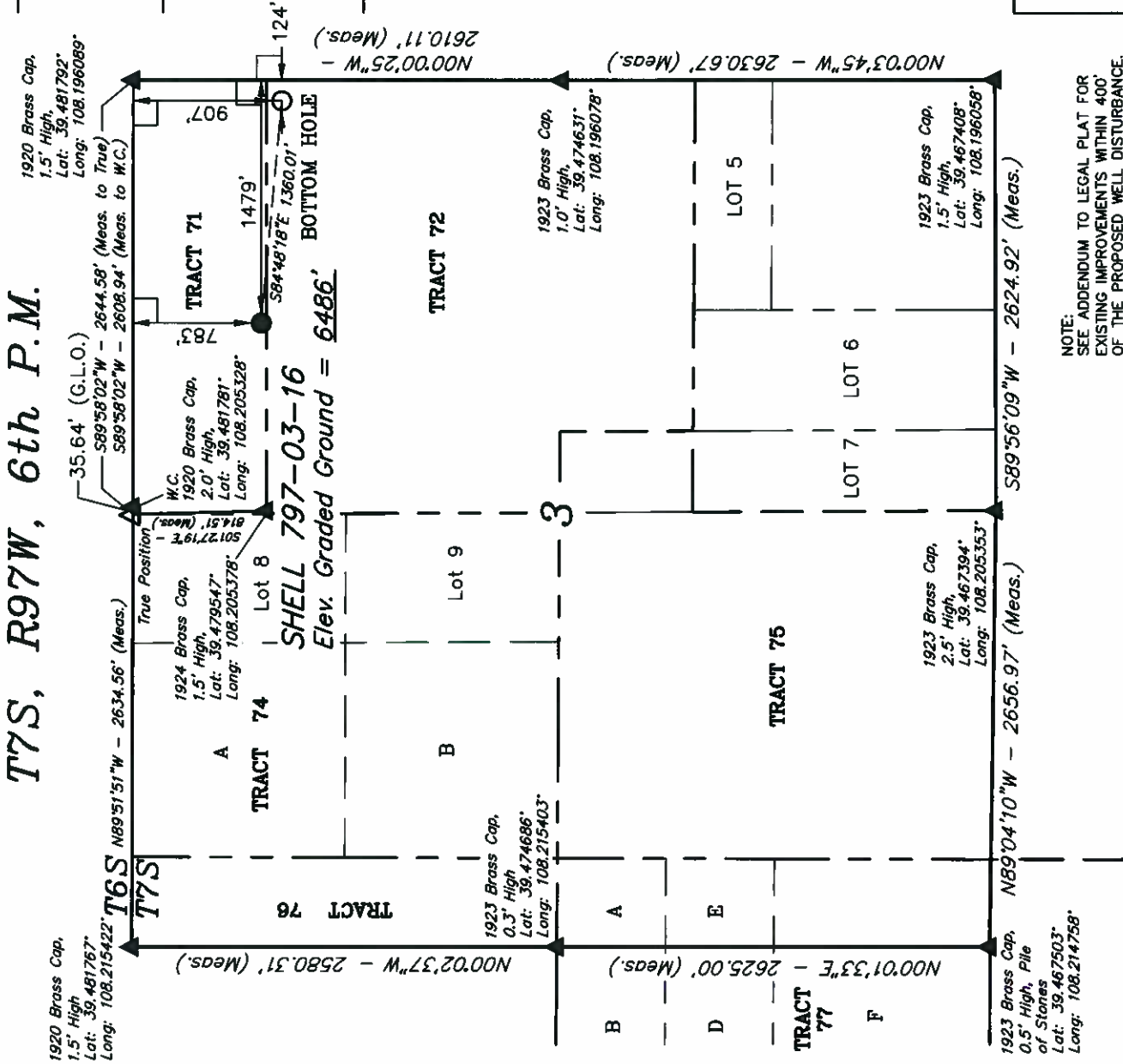
Well location, SHELL 797-03-16, located as shown in TRACT 71 of Section 3, T7S, R97W, 6th P.M., Garfield County, Colorado.

BASIS OF ELEVATION

SPOT ELEVATION AT THE NORTHWEST CORNER OF SECTION 30, T5S, R95W, 6th P.M. TAKEN FROM THE FORKED GULCH QUADRANGLE, COLORADO, GARFIELD COUNTY, 7.5 MINUTE SERIES (TOPOGRAPHICAL MAP) PUBLISHED BY THE UNITED STATES DEPARTMENT OF THE INTERIOR, GEOLOGICAL SURVEY. SAID ELEVATION IS MARKED AS BEING 5966 FEET.

BASIS OF BEARINGS

BASIS OF BEARINGS IS A G.P.S. OBSERVATION.



NOTE:  
SEE ADDENDUM TO LEGAL PLAT FOR  
EXISTING IMPROVEMENTS WITHIN 400'  
OF THE PROPOSED WELL DISTURBANCE.

LEGEND:

- = 90° SYMBOL
- = PROPOSED WELL HEAD.
- ▲ = SECTION CORNERS LOCATED

NAD 83 (TARGET BOTTOM HOLE)	NAD 83 (SURFACE LOCATION)
LATITUDE = 39°28'45.42" (39.479283)	LATITUDE = 39°28'46.62" (39.479617)
LONGITUDE = 108°11'49.79" (108.197164)	LONGITUDE = 108°12'07.05" (108.201958)
NAD 27 (TARGET BOTTOM HOLE)	NAD 27 (SURFACE LOCATION)
LATITUDE = 39°28'45.49" (39.479303)	LATITUDE = 39°28'46.70" (39.479639)
LONGITUDE = 108°11'47.49" (108.196525)	LONGITUDE = 108°12'04.76" (108.201322)

PDOP = 1.7

UTAH ENGINEERING & LAND SURVEYING			
85 SOUTH 200 EAST - VERNAL, UTAH 84078 (435) 789-1017			
SCALE 1" = 1000'	DATE SURVEYED: 08-17-11	DATE DRAWN: 10-07-11	
PARTY B.B. T.M. D.R.B.	REFERENCES G.L.O. PLAT		
WEATHER COOL	FILE		
			OXY USA WTP LP