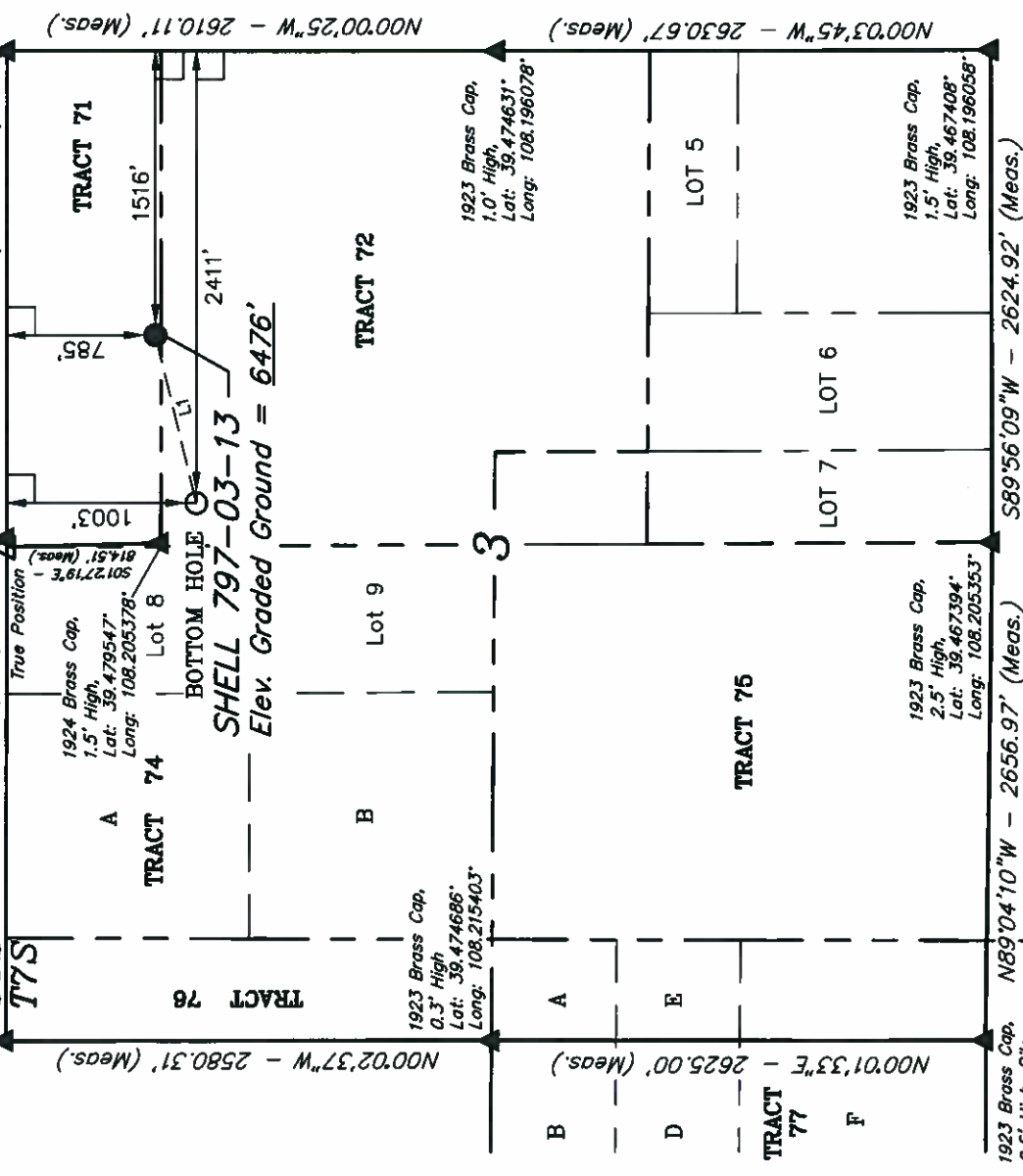


# T7S, R97W, 6th P.M.

## OXY USA WTP LP

1920 Brass Cap, 1.5' High, Lat: 39.481767, Long: 108.215422  
W.C. 1920 Brass Cap, 2.0' High, Lat: 39.481761, Long: 108.205328  
1924 Brass Cap, 1.5' High, Lat: 39.479547, Long: 108.205378  
1923 Brass Cap, 1.0' High, Lat: 39.474631, Long: 108.196078  
1923 Brass Cap, 1.5' High, Lat: 39.467408, Long: 108.196058  
1923 Brass Cap, 2.5' High, Lat: 39.467394, Long: 108.205353  
1923 Brass Cap, 0.5' High, Pile of Stones, Lat: 39.467503, Long: 108.214758



LINE TABLE		
LINE	BEARING	LENGTH
L1	S76°15'51\"W	921.42'

NOTE:  
SEE ADDENDUM TO LEGAL PLAT FOR  
EXISTING IMPROVEMENTS WITHIN 400'  
OF THE PROPOSED WELL DISTURBANCE.

### LEGEND:

— = 90° SYMBOL

● = PROPOSED WELL HEAD.

▲ = SECTION CORNERS LOCATED

NAD 83 (TARGET BOTTOM HOLE)	
LATITUDE = 39°28'44.43"	(39.479008)
LONGITUDE = 108°12'18.94"	(108.205261)
NAD 27 (TARGET BOTTOM HOLE)	
LATITUDE = 39°28'44.50"	(39.479028)
LONGITUDE = 108°12'16.64"	(108.204622)

NAD 83 (SURFACE LOCATION)	
LATITUDE = 39°28'46.60"	(39.479611)
LONGITUDE = 108°12'07.53"	(108.202092)
NAD 27 (SURFACE LOCATION)	
LATITUDE = 39°28'46.68"	(39.479633)
LONGITUDE = 108°12'05.23"	(108.201453)

PDOP = 1.7

1920 Brass Cap, 1.5' High, Lat: 39.481792, Long: 108.196089

589°58'02\"W - 2644.58' (Meas. to True)

589°58'02\"W - 2608.94' (Meas. to W.C.)

35.64' (G.L.O.)

1003'

78.02'

1516'

2411'

1000'00\"W - 2610.11' (Meas.)

1000'00\"W - 2630.67' (Meas.)

1000'00\"W - 2656.97' (Meas.)

1000'00\"W - 2684.92' (Meas.)

1000'00\"W - 2712.97' (Meas.)

1000'00\"W - 2740.92' (Meas.)

1000'00\"W - 2768.97' (Meas.)

1000'00\"W - 2796.92' (Meas.)

1000'00\"W - 2824.97' (Meas.)

1000'00\"W - 2852.92' (Meas.)

1000'00\"W - 2880.97' (Meas.)

1000'00\"W - 2908.92' (Meas.)

1000'00\"W - 2936.97' (Meas.)

1000'00\"W - 2964.92' (Meas.)

1000'00\"W - 2992.97' (Meas.)

1000'00\"W - 3020.92' (Meas.)

1000'00\"W - 3048.97' (Meas.)

1000'00\"W - 3076.92' (Meas.)

1000'00\"W - 3104.97' (Meas.)

1000'00\"W - 3132.92' (Meas.)

1000'00\"W - 3160.97' (Meas.)

1000'00\"W - 3188.92' (Meas.)

1000'00\"W - 3216.97' (Meas.)

1000'00\"W - 3244.92' (Meas.)

1000'00\"W - 3272.97' (Meas.)

1000'00\"W - 3300.92' (Meas.)

1000'00\"W - 3328.97' (Meas.)

1000'00\"W - 3356.92' (Meas.)

1000'00\"W - 3384.97' (Meas.)

1000'00\"W - 3412.92' (Meas.)

1000'00\"W - 3440.97' (Meas.)

1000'00\"W - 3468.92' (Meas.)

1000'00\"W - 3496.97' (Meas.)

1000'00\"W - 3524.92' (Meas.)

1000'00\"W - 3552.97' (Meas.)

1000'00\"W - 3580.92' (Meas.)

Well location, SHELL 797-03-13, located as shown in TRACT 71 of Section 3, T7S, R97W, 6th P.M., Garfield County, Colorado.

### BASIS OF ELEVATION

SPOT ELEVATION AT THE NORTHWEST CORNER OF SECTION 30, T5S, R95W, 6th P.M. TAKEN FROM THE FORKED GULCH QUADRANGLE, COLORADO, GARFIELD COUNTY, 7.5 MINUTE SERIES (TOPOGRAPHICAL MAP) PUBLISHED BY THE UNITED STATES DEPARTMENT OF THE INTERIOR, GEOLOGICAL SURVEY. SAID ELEVATION IS MARKED AS BEING 5966 FEET.

### BASIS OF BEARINGS

BASIS OF BEARINGS IS A G.P.S. OBSERVATION.



### CERTIFICATE

THIS IS TO CERTIFY THAT THE ABOVE PLAT WAS PREPARED FROM FIELD NOTES OF ACTUAL SURVEYS MADE BY ME OR UNDER MY SUPERVISION AND THAT THE SAME ARE TRUE AND CORRECT TO THE BEST OF MY KNOWLEDGE AND BELIEF.

REGISTERED LAND SURVEYOR  
STATE OF COLORADO  
10-10-2011

### UTAH ENGINEERING & LAND SURVEYING

85 SOUTH 200 EAST - VERNAL, UTAH 84078

(435) 789-1017

SCALE	DATE SURVEYED:	DATE DRAWN:
1" = 1000'	08-17-11	10-07-11
PARTY	REFERENCES	
B.B. T.M. D.R.B.	G.L.O. PLAT	
WEATHER	FILE	
COOL	OXY USA WTP LP	