

OXY USA WTP LP

T7S, R97W, 6th P.M.

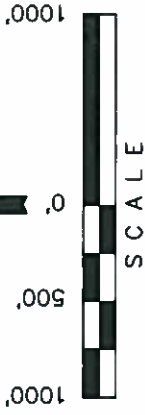
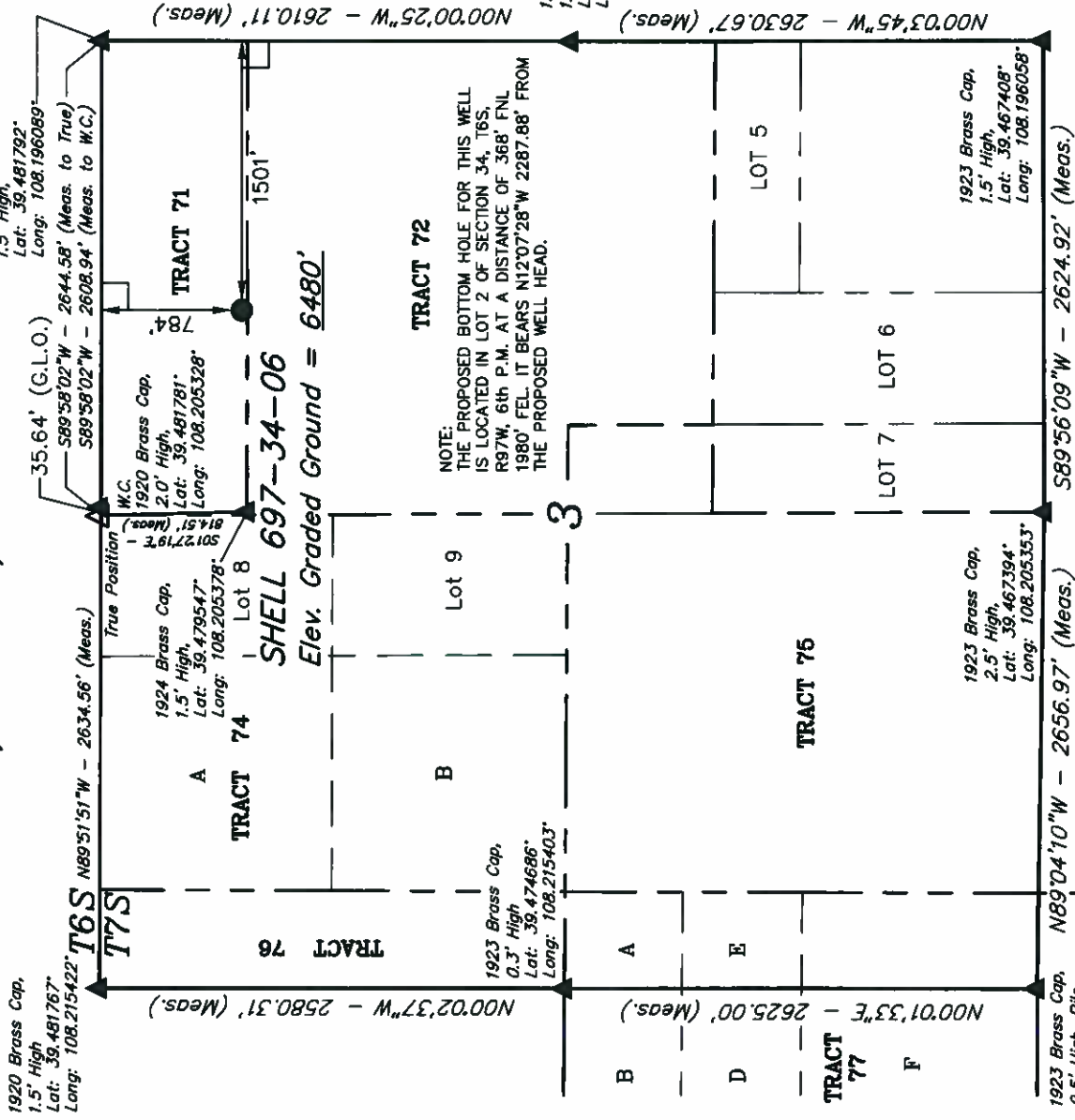
Well location, SHELL 697-34-06 (SURFACE LOCATION), located as shown in TRACT 71 of Section 3, T7S, R97W, 6th P.M., Garfield County, Colorado.

BASIS OF ELEVATION

SPOT ELEVATION AT THE NORTHWEST CORNER OF SECTION 30, T5S, R95W, 6th P.M. TAKEN FROM THE FORKED GULCH QUADRANGLE, COLORADO, GARFIELD COUNTY, 7.5 MINUTE SERIES (TOPOGRAPHICAL MAP) PUBLISHED BY THE UNITED STATES DEPARTMENT OF THE INTERIOR, GEOLOGICAL SURVEY. SAID ELEVATION IS MARKED AS BEING 5966 FEET.

BASIS OF BEARINGS

BASIS OF BEARINGS IS A G.P.S. OBSERVATION.



CERTIFICATE

THIS IS TO CERTIFY THAT THE ABOVE PLAT WAS PREPARED FROM FIELD NOTES OF ACTUAL SURVEYS MADE BY ME OR UNDER MY SUPERVISION AND THAT THE SAME ARE TRUE AND CORRECT TO THE BEST OF MY KNOWLEDGE AND BELIEF.

REGISTERED LAND SURVEYOR
 REGISTRATION NO. 12492
 STATE OF COLORADO
 10-10-2011

UTAH ENGINEERING & LAND SURVEYING

85 SOUTH 200 EAST - VERNAL, UTAH 84078
 (435) 789-1017

SCALE	1" = 1000'	DATE SURVEYED:	08-17-11	DATE DRAWN:	10-07-11
PARTY	B.B. T.M. D.R.B.	REFERENCES	G.L.O. PLAT		
WEATHER	COOL	FILE			
					OXY USA WTP LP

NOTE:
SEE ADDENDUM TO LEGAL PLAT FOR EXISTING IMPROVEMENTS WITHIN 400' OF THE PROPOSED WELL DISTURBANCE.

PDOP = 1.7
NAD 83 (SURFACE LOCATION)
LATITUDE = 39°28'46.60" (39.479611)
LONGITUDE = 108°12'07.34" (108.202039)
NAD 27 (SURFACE LOCATION)
LATITUDE = 39°28'46.68" (39.479633)
LONGITUDE = 108°12'05.04" (108.201400)

LEGEND:

- = 90° SYMBOL
- = PROPOSED WELL HEAD.
- ▲ = SECTION CORNERS LOCATED.

OXY USA WTP LP

Well location, SHELL 697-34-06 (BOTTOM HOLE LOCATION), located as shown in Lot 2 of Section 34, T6S, R97W, 6th P.M., Garfield County, Colorado.

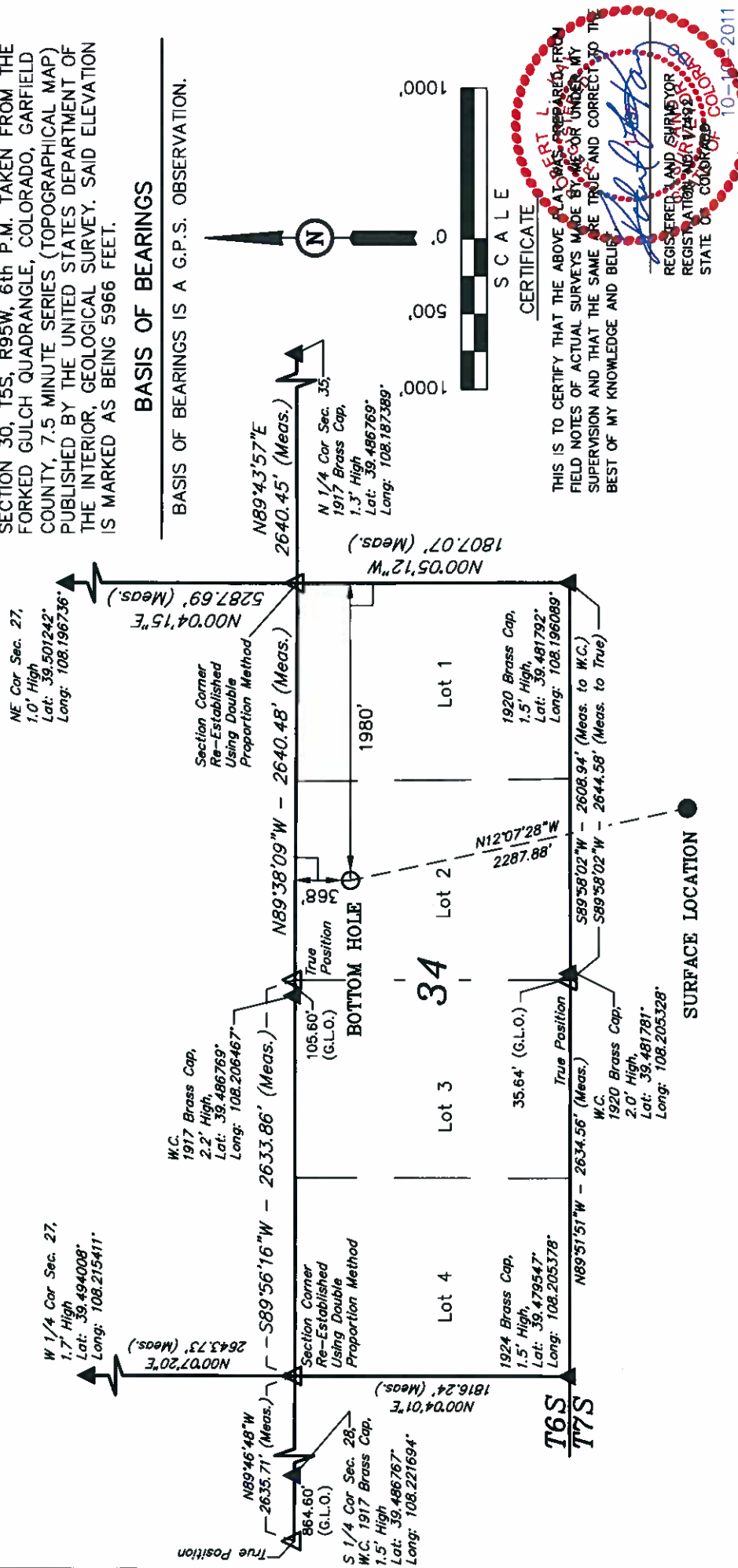
T6S, R97W, 6th P.M.

BASIS OF ELEVATION

SPOT ELEVATION AT THE NORTHWEST CORNER OF SECTION 30, T5S, R95W, 6th P.M. TAKEN FROM THE FORKED GULCH QUADRANGLE, COLORADO, GARFIELD COUNTY, 7.5 MINUTE SERIES (TOPOGRAPHICAL MAP) PUBLISHED BY THE UNITED STATES DEPARTMENT OF THE INTERIOR, GEOLOGICAL SURVEY. SAID ELEVATION IS MARKED AS BEING 5966 FEET.

BASIS OF BEARINGS

BASIS OF BEARINGS IS A G.P.S. OBSERVATION.



NOTE:
THE PROPOSED WELL HEAD FOR THIS WELL
IS LOCATED IN TRACT 71 OF SECTION 3, T7S,
R97W, 6th P.M. AT A DISTANCE OF 784' FNL
1501' FEL. IT BEARS S12°07'28"E 2287.88' FROM
THE PROPOSED BOTTOM HOLE.

UTAH ENGINEERING & LAND SURVEYING			
85 SOUTH 200 EAST - VERNAL, UTAH 84078			
(435) 789-1017			
SCALE 1" = 1000'	DATE SURVEYED: 08-17-11	DATE DRAWN: 10-07-11	
PARTY B.B. T.M. D.R.B.	REFERENCES G.L.O. PLAT		
WEATHER COOL	FILE		

LEGEND:

- = 90° SYMBOL
- = PROPOSED WELL HEAD.
- ▲ = SECTION CORNERS LOCATED.