

T7S, R97W, 6th P.M.

OXY USA WTP LP

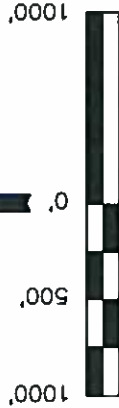
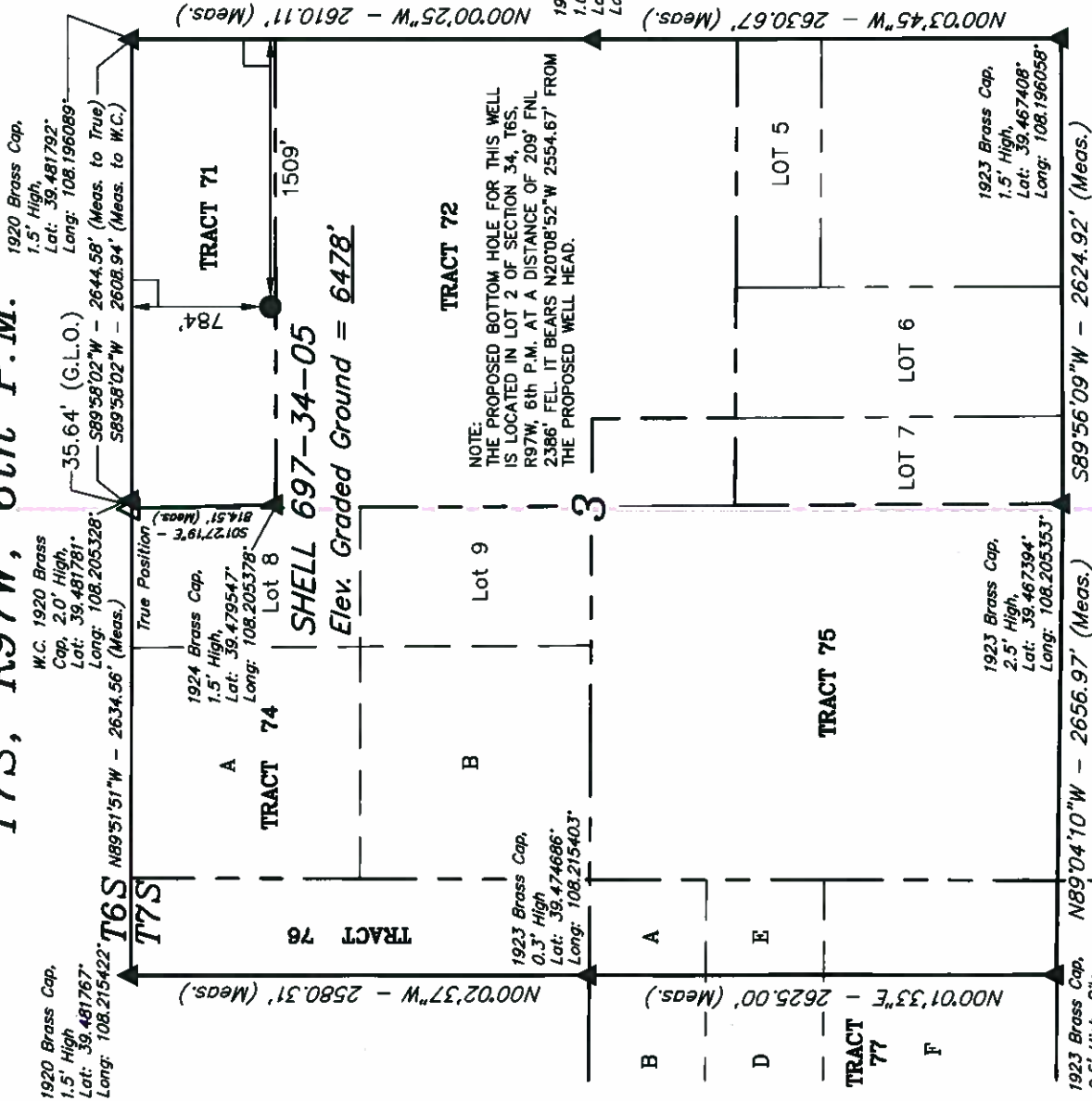
Well location, SHELL 697-34-05 (SURFACE LOCATION), located as shown in TRACT 71 of Section 3, T7S, R97W, 6th P.M., Garfield County, Colorado.

BASIS OF ELEVATION

SPOT ELEVATION AT THE NORTHWEST CORNER OF SECTION 30, T5S, R95W, 6th P.M. TAKEN FROM THE FORKED GULCH QUADRANGLE, COLORADO, GARFIELD COUNTY, 7.5 MINUTE SERIES (TOPOGRAPHICAL MAP) PUBLISHED BY THE UNITED STATES DEPARTMENT OF THE INTERIOR, GEOLOGICAL SURVEY. SAID ELEVATION IS MARKED AS BEING 5966 FEET.

BASIS OF BEARINGS

BASIS OF BEARINGS IS A G.P.S. OBSERVATION.



CERTIFICATE

THIS IS TO CERTIFY THAT THE ABOVE PLAT WAS PREPARED FROM FIELD NOTES OF ACTUAL SURVEYS MADE BY ME OR UNDER MY SUPERVISION AND THAT THE SAME ARE TRUE AND CORRECT TO THE BEST OF MY KNOWLEDGE AND BELIEF.

REGISTERED LAND SURVEYOR
REGISTRATION NO. 107492
STATE OF COLORADO
10-10-2011

UNTAH ENGINEERING & LAND SURVEYING

85 SOUTH 200 EAST - VERNAL, UTAH 84078

(435) 789-1017

SCALE 1" = 1000'	DATE SURVEYED: 08-17-11	DATE DRAWN: 10-07-11
PARTY B.B. T.M. D.R.B.	REFERENCES G.L.O. PLAT	
WEATHER COOL	FILE	
		OXY USA WTP LP

NOTE:
SEE ADDENDUM TO LEGAL PLAT FOR EXISTING IMPROVEMENTS WITHIN 400' OF THE PROPOSED WELL DISTURBANCE.

PDOP = 1.7
NAD 83 (SURFACE LOCATION)
LATITUDE = 39°28'46.60" (39.479611)
LONGITUDE = 108°12'07.43" (108.202064)
NAD 27 (SURFACE LOCATION)
LATITUDE = 39°28'46.68" (39.479633)
LONGITUDE = 108°12'05.14" (108.201428)

LEGEND:

- = 90° SYMBOL
- = PROPOSED WELL HEAD.
- ▲ = SECTION CORNERS LOCATED.

OXY USA WTP LP

Well location, SHELL 697-34-05 (BOTTOM HOLE LOCATION), located as shown in Lot 2 of Section 34, T6S, R97W, 6th P.M., Garfield County, Colorado.

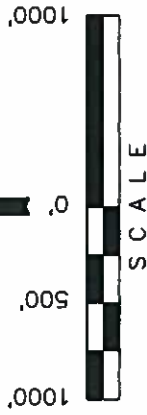
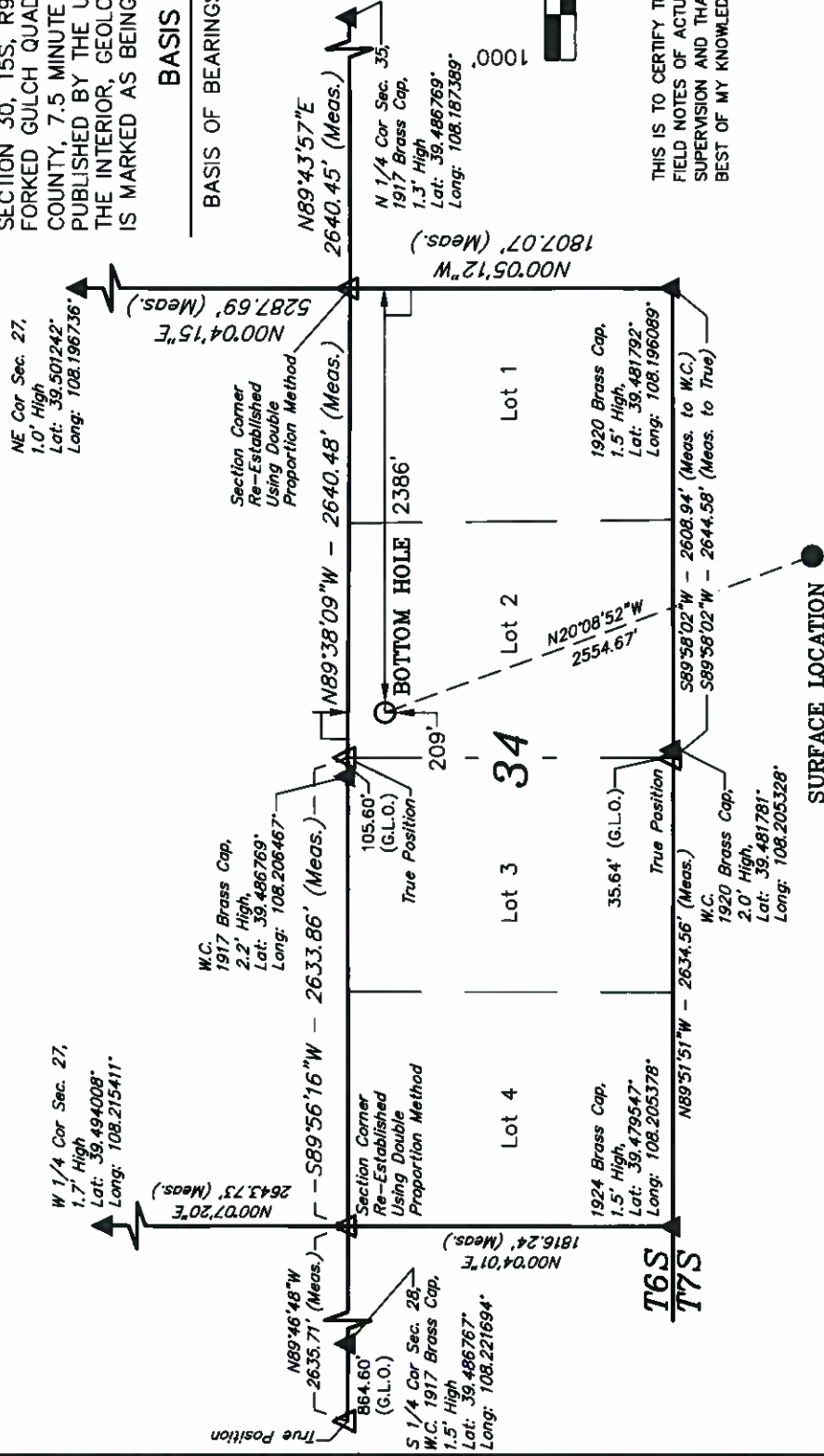
T6S, R97W, 6th P.M.

BASIS OF ELEVATION

SPOT ELEVATION AT THE NORTHWEST CORNER OF SECTION 30, T5S, R95W, 6th P.M. TAKEN FROM THE FORKED GULCH QUADRANGLE, COLORADO, GARFIELD COUNTY, 7.5 MINUTE SERIES (TOPOGRAPHICAL MAP) PUBLISHED BY THE UNITED STATES DEPARTMENT OF THE INTERIOR, GEOLOGICAL SURVEY. SAID ELEVATION IS MARKED AS BEING 5966 FEET.

BASIS OF BEARINGS

BASIS OF BEARINGS IS A G.P.S. OBSERVATION.



SCALE
CERTIFICATE

THIS IS TO CERTIFY THAT THE ABOVE PLAT WAS PREPARED FROM FIELD NOTES OF ACTUAL SURVEYS MADE BY ME OR UNDER MY SUPERVISION AND THAT THE SAME ARE TRUE AND CORRECT TO THE BEST OF MY KNOWLEDGE AND BELIEF.

REGISTERED LAND SURVEYOR
REGISTRATION NO. 167299
STATE OF COLORADO
10-10-2011

NOTE:
THE PROPOSED WELL HEAD FOR THIS WELL IS LOCATED IN TRACT 71 OF SECTION 3, T7S, R97W, 6th P.M. AT A DISTANCE OF 784' FNL 1509' FEL. IT BEARS S20°08'52"E 2554.67' FROM THE PROPOSED BOTTOM HOLE.

UNTAH ENGINEERING & LAND SURVEYING
85 SOUTH 200 EAST - VERNAL, UTAH 84078
(435) 789-1017

LEGEND:

- = 90° SYMBOL
- = PROPOSED WELL HEAD.
- ▲ = SECTION CORNERS LOCATED.

SCALE 1" = 1000'	DATE SURVEYED: 08-17-11	DATE DRAWN: 10-07-11
PARTY B.B. T.M. D.R.B.	REFERENCES G.L.O. PLAT	
WEATHER COOL	FILE	
		OXY USA WTP LP

NAD 83 (TARGET BOTTOM HOLE)
LATITUDE = 39°29'10.29" (39.486192)
LONGITUDE = 108°12'18.68" (108.205189)
NAD 27 (TARGET BOTTOM HOLE)
LATITUDE = 39°29'10.37" (39.486214)
LONGITUDE = 108°12'16.39" (108.204553)