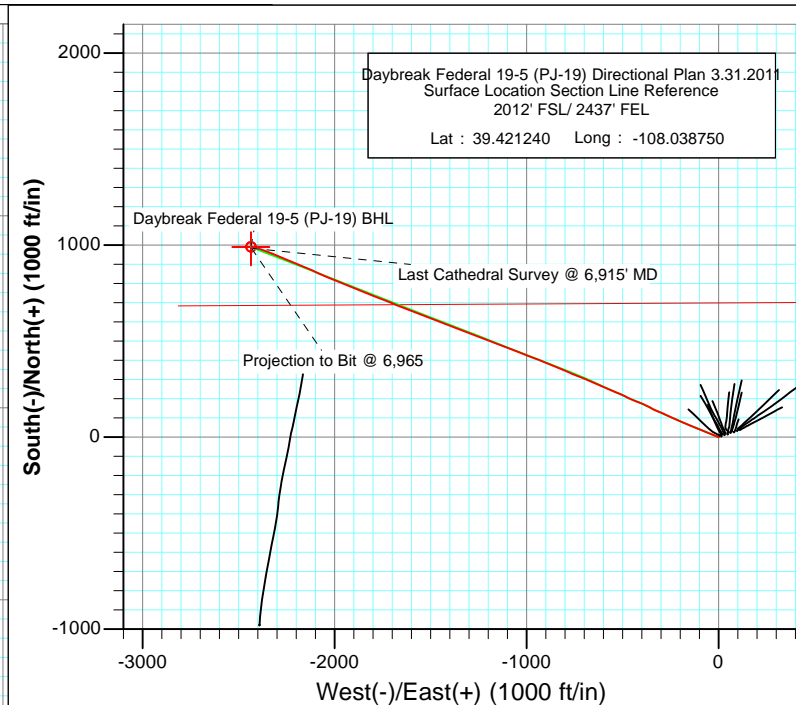
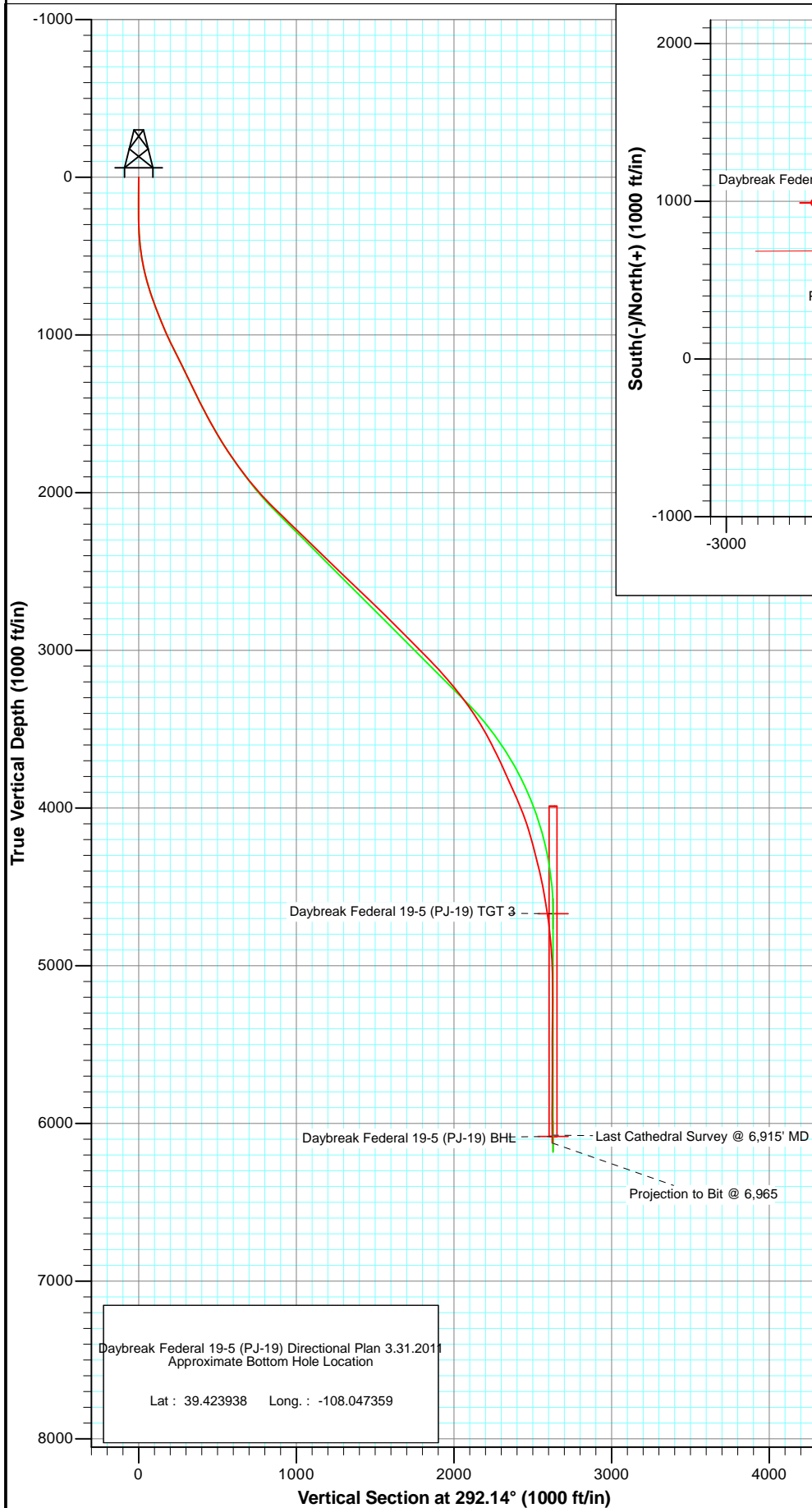




Project: S. Piceance (Parachute)
 Site: NWSE S19-T7S-R95W (PJ-19 Pad)
 Well: Daybreak Federal 19-5 (PJ-19) Directional Plan 3.31.2011
 Wellbore: DD
 Plan: FINAL



Azimuths to True North
 Magnetic North: 10.36°

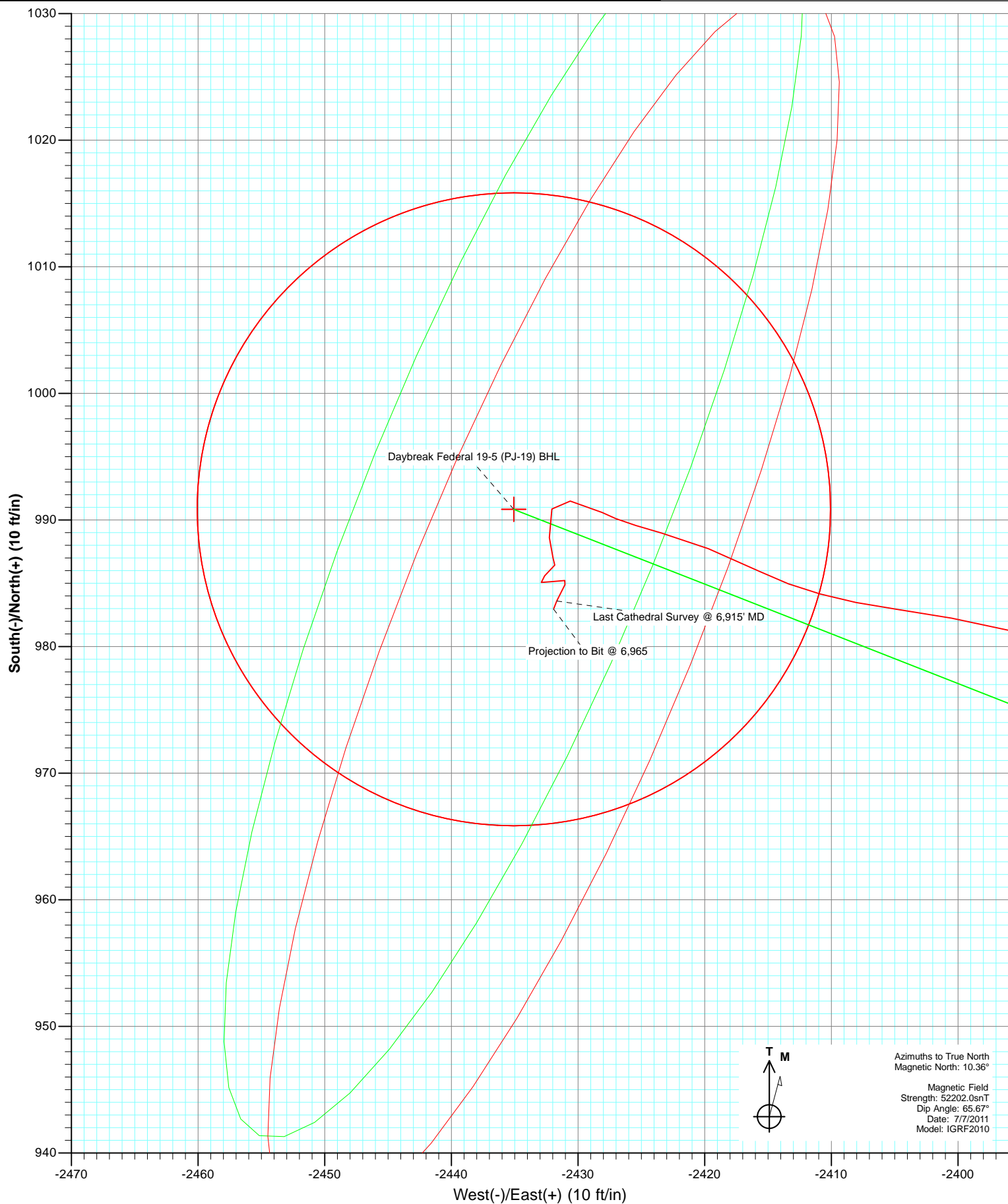
Magnetic Field
 Strength: 52202.0nT
 Dip Angle: 65.67°
 Date: 7/7/2011
 Model: IGRF2010

DESIGN DETAILS: DD
 Job# 115277; BH
 KBE2 @ 5449.0ft (Revised KB)

	Azimuth	Origin Type	N/S	E/W
Daybreak Federal 19-5 (PJ-19) BHL	292.14	Slot	0.0	0.0

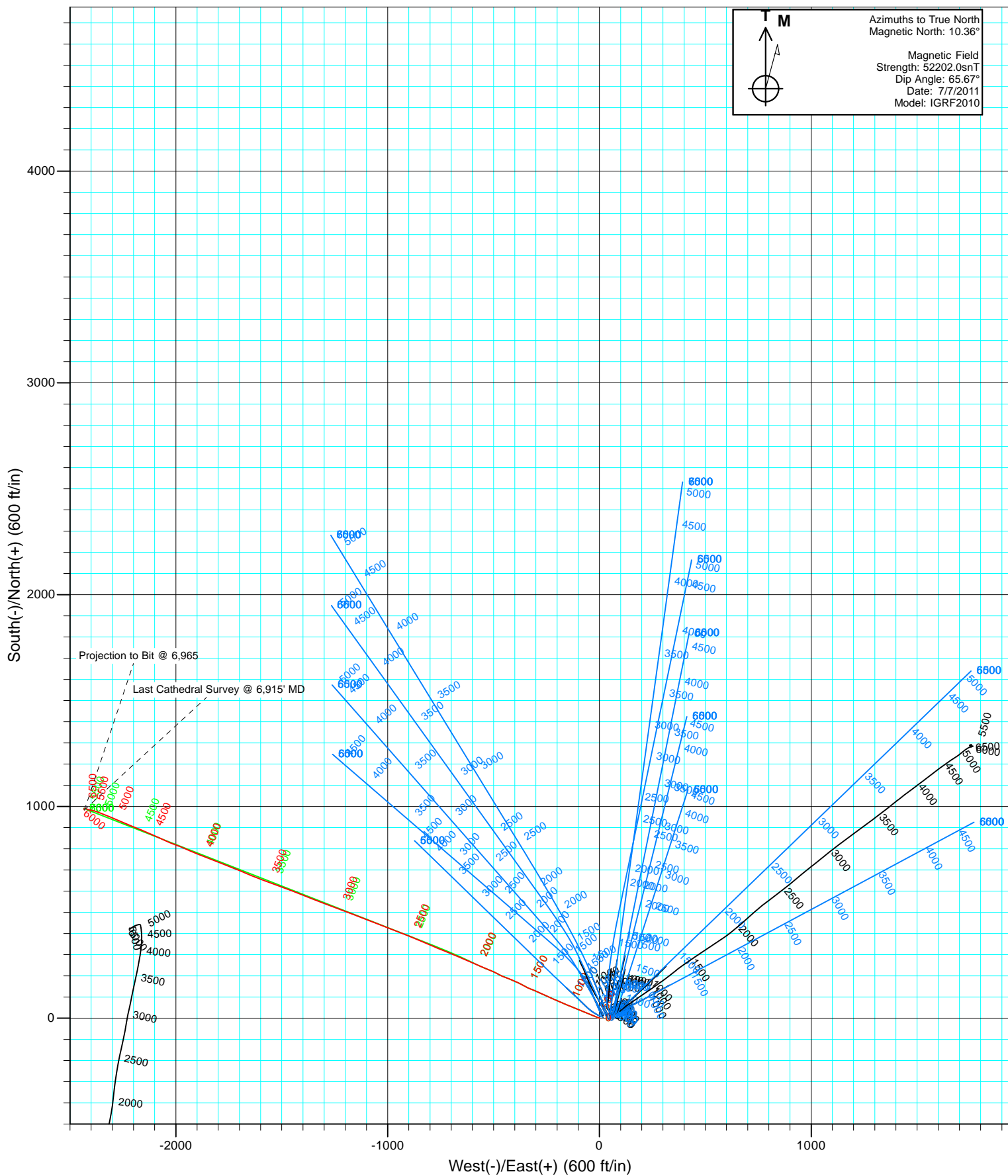


Project: S. Piceance (Parachute)
Site: NWSE S19-T7S-R95W (PJ-19 Pad)
Well: Daybreak Federal 19-5 (PJ-19) Directional Plan 3.31.2011
Wellbore: DD
Plan: FINAL





Project: S. Piceance (Parachute)
Site: NWSE S19-T7S-R95W (PJ-19 Pad)
Well: Daybreak Federal 19-5 (PJ-19) Directional Plan 3.31.2011
Wellbore: DD
Design: FINAL



Survey Report

Company:	EnCana Oil & Gas (USA) Inc	Local Co-ordinate Reference:	Well Daybreak Federal 19-5 (PJ-19) Directional P
Project:	S. Piceance (Parachute)	TVD Reference:	KBE2 @ 5449.0ft (Revised KB)
Site:	NWSE S19-T7S-R95W (PJ-19 Pad)	MD Reference:	KBE2 @ 5449.0ft (Revised KB)
Well:	Daybreak Federal 19-5 (PJ-19) Directional Plan	North Reference:	True
Wellbore:	DD1.2011	Survey Calculation Method:	Minimum Curvature
Design:	DD	Database:	USA EDM 5000 Multi Users DB

Project	S. Piceance (Parachute), Garfield County, CO		
Map System:	US State Plane 1983	System Datum:	Mean Sea Level
Geo Datum:	North American Datum 1983		
Map Zone:	Colorado Central Zone		

Site		NWSE S19-T7S-R95W (PJ-19 Pad)			
Site Position:		Northing:	1,588,373.67 ft	Latitude:	39.421340
From:	Lat/Long	Easting:	2,283,011.65 ft	Longitude:	-108.038360
Position Uncertainty:	0.0 ft	Slot Radius:	13.200 in	Grid Convergence:	-1.60 °

Well	Daybreak Federal 19-5 (PJ-19) Directional Plan 3.31.2011					
Well Position	+N/-S	0.0 ft	Northing:	1,588,340.32 ft	Latitude:	39.421240
	+E/-W	0.0 ft	Easting:	2,282,900.50 ft	Longitude:	-108.038750
Position Uncertainty		0.0 ft	Wellhead Elevation:	ft	Ground Level:	5,427.0 ft

Wellbore	DD				
Magnetics	Model Name	Sample Date	Declination (°)	Dip Angle (°)	Field Strength (nT)
	IGRF2010	7/7/2011	10.35	65.67	52,202

Design	DD				
Audit Notes:					
Version:	1.0	Phase:	ACTUAL	Tie On Depth:	0.0
Vertical Section:	Depth From (TVD) (ft)	+N/-S (ft)	+E/-W (ft)	Direction (°)	
	0.0	0.0	0.0	292.14	

Survey Program	Date	7/15/2011			
From (ft)	To (ft)	Survey (Wellbore)	Tool Name	Description	
139.0	1,976.0	DD (DD)	MWD	Geolink MWD	
2,030.0	6,965.0	Survey #2 (DD)	MWD	Geolink MWD	

Survey										
Measured Depth (ft)	Inclination (°)	Azimuth (°)	Vertical Depth (ft)	+N/-S (ft)	+E/-W (ft)	Vertical Section (ft)	Dogleg Rate (°/100ft)	Build Rate (°/100ft)	Formations / Comments	
0.0	0.00	0.00	0.0	0.0	0.0	0.0	0.00	0.00		
139.0	0.20	100.40	139.0	0.0	0.2	-0.2	0.14	0.14		
169.0	0.40	155.20	169.0	-0.1	0.3	-0.4	1.09	0.67		
200.0	0.20	181.00	200.0	-0.3	0.4	-0.5	0.76	-0.65		
231.0	0.00	100.40	231.0	-0.4	0.4	-0.5	0.65	-0.65		
262.0	0.20	293.20	262.0	-0.3	0.3	-0.4	0.65	0.65		
293.0	1.40	293.60	293.0	-0.2	-0.1	0.0	3.87	3.87		
324.0	2.40	291.00	324.0	0.2	-1.0	1.0	3.24	3.23		
354.0	3.20	289.20	353.9	0.7	-2.4	2.5	2.68	2.67		
385.0	4.40	295.70	384.9	1.5	-4.3	4.5	4.11	3.87		
416.0	5.60	294.00	415.8	2.7	-6.7	7.2	3.90	3.87		
447.0	6.60	291.40	446.6	3.9	-9.8	10.5	3.35	3.23		

Survey Report

Company:	EnCana Oil & Gas (USA) Inc	Local Co-ordinate Reference:	Well Daybreak Federal 19-5 (PJ-19) Directional P
Project:	S. Piceance (Parachute)	TVD Reference:	KBE2 @ 5449.0ft (Revised KB)
Site:	NWSE S19-T7S-R95W (PJ-19 Pad)	MD Reference:	KBE2 @ 5449.0ft (Revised KB)
Well:	Daybreak Federal 19-5 (PJ-19) Directional Plan	North Reference:	True
Wellbore:	DD1.2011	Survey Calculation Method:	Minimum Curvature
Design:	DD	Database:	USA EDM 5000 Multi Users DB

Survey									
Measured Depth (ft)	Inclination (°)	Azimuth (°)	Vertical Depth (ft)	+N/-S (ft)	+E/-W (ft)	Vertical Section (ft)	Dogleg Rate (°/100ft)	Build Rate (°/100ft)	Formations / Comments
478.0	8.20	293.80	477.3	5.5	-13.5	14.5	5.26	5.16	
508.0	9.40	293.10	507.0	7.3	-17.7	19.1	4.02	4.00	
539.0	10.50	290.60	537.5	9.3	-22.6	24.5	3.81	3.55	
570.0	11.70	290.80	567.9	11.4	-28.2	30.4	3.87	3.87	
600.0	12.90	291.90	597.2	13.7	-34.2	36.8	4.08	4.00	
631.0	14.00	292.00	627.4	16.4	-40.9	44.0	3.55	3.55	
662.0	15.20	292.00	657.4	19.3	-48.1	51.9	3.87	3.87	
692.0	16.40	292.20	686.2	22.4	-55.7	60.0	4.00	4.00	
722.0	17.80	293.50	714.9	25.8	-63.8	68.8	4.84	4.67	
753.0	18.80	293.50	744.3	29.7	-72.7	78.6	3.23	3.23	
784.0	19.70	293.10	773.6	33.8	-82.1	88.8	2.93	2.90	
877.0	21.30	292.10	860.7	46.3	-112.2	121.4	1.76	1.72	
908.0	21.20	290.40	889.6	50.3	-122.7	132.6	2.01	-0.32	
939.0	22.10	291.70	918.4	54.5	-133.3	144.0	3.29	2.90	
969.0	22.70	290.90	946.2	58.6	-144.0	155.5	2.24	2.00	
1,000.0	24.00	293.40	974.6	63.2	-155.4	167.7	5.27	4.19	
1,031.0	24.70	293.50	1,002.9	68.3	-167.1	180.5	2.26	2.26	
1,062.0	25.00	292.50	1,031.0	73.4	-179.1	193.5	1.67	0.97	
1,093.0	26.40	294.20	1,058.9	78.7	-191.4	207.0	5.10	4.52	
1,170.0	26.80	293.80	1,127.8	92.8	-222.9	241.4	0.57	0.52	
1,309.0	25.60	294.95	1,252.5	118.1	-278.8	302.8	0.94	-0.86	
1,404.0	25.84	291.26	1,338.1	134.2	-316.7	344.0	1.70	0.25	
1,500.0	27.03	298.38	1,424.1	152.2	-355.4	386.6	3.52	1.24	
1,595.0	28.13	295.21	1,508.3	172.0	-394.7	430.4	1.93	1.16	
1,689.0	29.66	289.85	1,590.6	189.4	-436.6	475.8	3.20	1.63	
1,785.0	31.73	298.47	1,673.2	209.5	-481.2	524.6	5.06	2.16	
1,880.0	34.06	290.56	1,753.0	230.7	-528.1	576.1	5.14	2.45	
1,976.0	35.46	295.92	1,831.9	252.3	-578.3	630.8	3.50	1.46	Last Cathedral Survey @ 1,976' MD
2,030.0	37.09	292.84	1,875.4	265.5	-607.4	662.7	4.53	3.02	
2,124.0	40.12	292.31	1,948.8	288.0	-661.6	721.3	3.24	3.22	
2,219.0	42.06	292.31	2,020.4	311.7	-719.3	783.8	2.04	2.04	
2,315.0	45.92	293.37	2,089.5	337.6	-780.7	850.4	4.09	4.02	
2,410.0	45.26	292.93	2,156.0	364.3	-843.1	918.3	0.77	-0.69	
2,506.0	46.49	291.96	2,222.8	390.6	-906.8	987.2	1.47	1.28	
2,602.0	45.79	290.82	2,289.3	415.8	-971.3	1,056.4	1.12	-0.73	
2,697.0	46.10	291.35	2,355.4	440.4	-1,035.0	1,124.6	0.52	0.33	
2,792.0	45.48	291.26	2,421.6	465.2	-1,098.4	1,192.7	0.66	-0.65	
2,887.0	46.63	291.26	2,487.6	490.0	-1,162.2	1,261.1	1.21	1.21	
2,982.0	46.27	290.64	2,553.0	514.6	-1,226.5	1,330.0	0.61	-0.38	
3,077.0	45.57	290.29	2,619.1	538.4	-1,290.4	1,398.2	0.78	-0.74	
3,172.0	46.67	291.70	2,685.0	563.0	-1,354.3	1,466.6	1.58	1.16	
3,267.0	46.36	291.52	2,750.3	588.4	-1,418.4	1,535.6	0.35	-0.33	
3,362.0	45.00	290.03	2,816.7	612.5	-1,481.9	1,603.5	1.82	-1.43	
3,457.0	44.47	289.94	2,884.2	635.3	-1,544.8	1,670.3	0.56	-0.56	
3,552.0	44.34	291.61	2,952.1	658.9	-1,606.9	1,736.8	1.24	-0.14	
3,647.0	45.66	292.75	3,019.2	684.3	-1,669.1	1,803.9	1.63	1.39	
3,742.0	43.29	291.70	3,087.0	709.5	-1,730.7	1,870.5	2.61	-2.49	
3,837.0	41.79	291.70	3,157.0	733.2	-1,790.4	1,934.7	1.58	-1.58	
3,932.0	38.85	290.82	3,229.4	755.5	-1,847.7	1,996.2	3.15	-3.09	
4,028.0	37.35	293.28	3,305.0	777.7	-1,902.6	2,055.4	2.22	-1.56	
4,122.0	34.85	292.49	3,380.9	799.3	-1,953.6	2,110.8	2.71	-2.66	
4,217.0	31.64	290.47	3,460.4	818.4	-2,002.0	2,162.8	3.57	-3.38	
4,313.0	28.34	294.33	3,543.5	836.6	-2,046.4	2,210.8	3.98	-3.44	

Survey Report

Company:	EnCana Oil & Gas (USA) Inc	Local Co-ordinate Reference:	Well Daybreak Federal 19-5 (PJ-19) Directional P
Project:	S. Piceance (Parachute)	TVD Reference:	KBE2 @ 5449.0ft (Revised KB)
Site:	NWSE S19-T7S-R95W (PJ-19 Pad)	MD Reference:	KBE2 @ 5449.0ft (Revised KB)
Well:	Daybreak Federal 19-5 (PJ-19) Directional Plan	North Reference:	True
Wellbore:	DD1.2011	Survey Calculation Method:	Minimum Curvature
Design:	DD	Database:	USA EDM 5000 Multi Users DB

Survey

Measured Depth (ft)	Inclination (°)	Azimuth (°)	Vertical Depth (ft)	+N/-S (ft)	+E/-W (ft)	Vertical Section (ft)	Dogleg Rate (°/100ft)	Build Rate (°/100ft)	Formations / Comments
4,408.0	26.94	294.86	3,627.7	854.9	-2,086.5	2,254.8	1.50	-1.47	
4,503.0	24.52	293.37	3,713.2	871.8	-2,124.1	2,296.0	2.64	-2.55	
4,598.0	24.83	292.49	3,799.6	887.2	-2,160.6	2,335.7	0.51	0.33	
4,693.0	24.04	292.58	3,886.1	902.3	-2,196.9	2,375.0	0.83	-0.83	
4,787.0	22.98	291.70	3,972.3	916.4	-2,231.6	2,412.5	1.19	-1.13	
4,882.0	19.42	294.95	4,060.8	929.9	-2,263.2	2,446.8	3.94	-3.75	
4,977.0	17.27	292.93	4,151.0	942.1	-2,290.5	2,476.7	2.36	-2.26	
5,073.0	14.68	290.20	4,243.3	951.9	-2,315.1	2,503.1	2.81	-2.70	
5,168.0	13.71	292.14	4,335.4	960.2	-2,336.8	2,526.4	1.14	-1.02	
5,263.0	12.83	292.23	4,427.8	968.5	-2,357.0	2,548.2	0.93	-0.93	
5,358.0	10.46	288.09	4,520.9	975.2	-2,374.9	2,567.3	2.64	-2.49	
5,453.0	9.58	285.55	4,614.4	979.9	-2,390.8	2,583.8	1.04	-0.93	
5,549.0	7.87	277.72	4,709.3	983.0	-2,405.0	2,598.1	2.16	-1.78	
5,644.0	5.71	296.18	4,803.6	985.9	-2,415.7	2,609.1	3.20	-2.27	
5,739.0	4.35	285.28	4,898.3	989.0	-2,423.4	2,617.4	1.74	-1.43	
5,834.0	1.71	298.38	4,993.1	990.6	-2,428.1	2,622.4	2.86	-2.78	
5,929.0	1.54	280.36	5,088.1	991.5	-2,430.6	2,625.0	0.56	-0.18	
6,024.0	1.05	193.00	5,183.1	990.9	-2,432.1	2,626.2	1.92	-0.52	
6,119.0	1.71	180.43	5,278.1	988.6	-2,432.3	2,625.5	0.76	0.69	
6,214.0	0.44	123.12	5,373.0	987.0	-2,432.0	2,624.6	1.60	-1.34	
6,309.0	0.48	206.88	5,468.0	986.4	-2,431.8	2,624.3	0.65	0.04	
6,403.0	0.97	231.05	5,562.0	985.6	-2,432.6	2,624.7	0.60	0.52	
6,498.0	0.44	91.66	5,657.0	985.1	-2,432.9	2,624.8	1.41	-0.56	
6,593.0	0.75	82.43	5,752.0	985.1	-2,431.9	2,623.9	0.34	0.33	
6,688.0	0.31	90.69	5,847.0	985.2	-2,431.0	2,623.1	0.47	-0.46	
6,783.0	0.48	216.46	5,942.0	984.9	-2,431.0	2,623.0	0.74	0.18	
6,915.0	0.79	200.99	6,074.0	983.6	-2,431.7	2,623.1	0.27	0.23	Last Cathedral Survey @ 6,915' MD
6,965.0	0.79	200.99	6,124.0	983.0	-2,431.9	2,623.1	0.00	0.00	Projection to Bit @ 6,965

Survey Report

Company:	EnCana Oil & Gas (USA) Inc	Local Co-ordinate Reference:	Well Daybreak Federal 19-5 (PJ-19) Directional P
Project:	S. Piceance (Parachute)	TVD Reference:	KBE2 @ 5449.0ft (Revised KB)
Site:	NWSE S19-T7S-R95W (PJ-19 Pad)	MD Reference:	KBE2 @ 5449.0ft (Revised KB)
Well:	Daybreak Federal 19-5 (PJ-19) Directional Plan	North Reference:	True
Wellbore:	DD1.2011	Survey Calculation Method:	Minimum Curvature
Design:	DD	Database:	USA EDM 5000 Multi Users DB

Targets									
Target Name									
- hit/miss target	Dip Angle	Dip Dir.	TVD	+N/-S	+E/-W	Northing	Easting	Latitude	Longitude
- Shape	(°)	(°)	(ft)	(ft)	(ft)	(ft)	(ft)		
Interp @ 1067.1 (Daybreak) - actual wellpath misses target center by 2.7ft at 1100.8ft MD (1065.9 TVD, 80.2 N, -194.6 E) - Point	0.00	0.00	1,067.1	78.5	-192.8	1,588,424.13	2,282,709.96	39.421455	-108.039433
Interp @ 976.8 (Daybreak) - actual wellpath misses target center by 4.4ft at 1002.7ft MD (977.1 TVD, 63.7 N, -156.4 E) - Point	0.00	0.00	978.8	60.7	-153.6	1,588,405.26	2,282,748.69	39.421407	-108.039294
Daybreak Federal 19-5 () - actual wellpath misses target center by 11.3ft at 6915.0ft MD (6074.0 TVD, 983.6 N, -2431.7 E) - Circle (radius 25.0)	0.00	0.00	6,082.0	990.8	-2,435.1	1,589,398.82	2,280,494.07	39.423960	-108.047370
Interp @ 856.1 (Daybreak) - actual wellpath misses target center by 4.2ft at 872.7ft MD (856.7 TVD, 45.7 N, -110.7 E) - Point	0.00	0.00	858.1	42.7	-108.1	1,588,386.03	2,282,793.65	39.421357	-108.039133
Daybreak Federal 19-5 () - actual wellpath misses target center by 103.7ft at 5176.4ft MD (4343.5 TVD, 961.0 N, -2338.6 E) - Point	0.00	0.00	4,319.8	990.8	-2,435.1	1,589,398.82	2,280,494.07	39.423960	-108.047370
Daybreak Federal 19-5 () - actual wellpath misses target center by 36.4ft at 5514.8ft MD (4675.5 TVD, 982.2 N, -2400.2 E) - Point	0.00	0.00	4,670.0	990.8	-2,435.1	1,589,398.82	2,280,494.07	39.423960	-108.047370
Daybreak Federal 19-5 () - actual wellpath misses target center by 105.3ft at 5169.8ft MD (4337.1 TVD, 960.4 N, -2337.2 E) - Point	0.00	0.00	4,313.0	990.8	-2,435.1	1,589,398.82	2,280,494.07	39.423960	-108.047370

Design Annotations				
Measured Depth	Vertical Depth	Local Coordinates		Comment
(ft)	(ft)	+N/-S (ft)	+E/-W (ft)	
1,976.0	1,831.9	252.3	-578.3	Last Cathedral Survey @ 1,976' MD
6,915.0	6,074.0	983.6	-2,431.7	Last Cathedral Survey @ 6,915' MD
6,965.0	6,124.0	983.0	-2,431.9	Projection to Bit @ 6,965

Checked By: _____	Approved By: _____	Date: _____
-------------------	--------------------	-------------