

SWEPI LP
HERRING DRAW #1-33
LOCATED IN MOFFAT COUNTY, COLORADO
SECTION 33, T5N, R90W, 6th P.M.

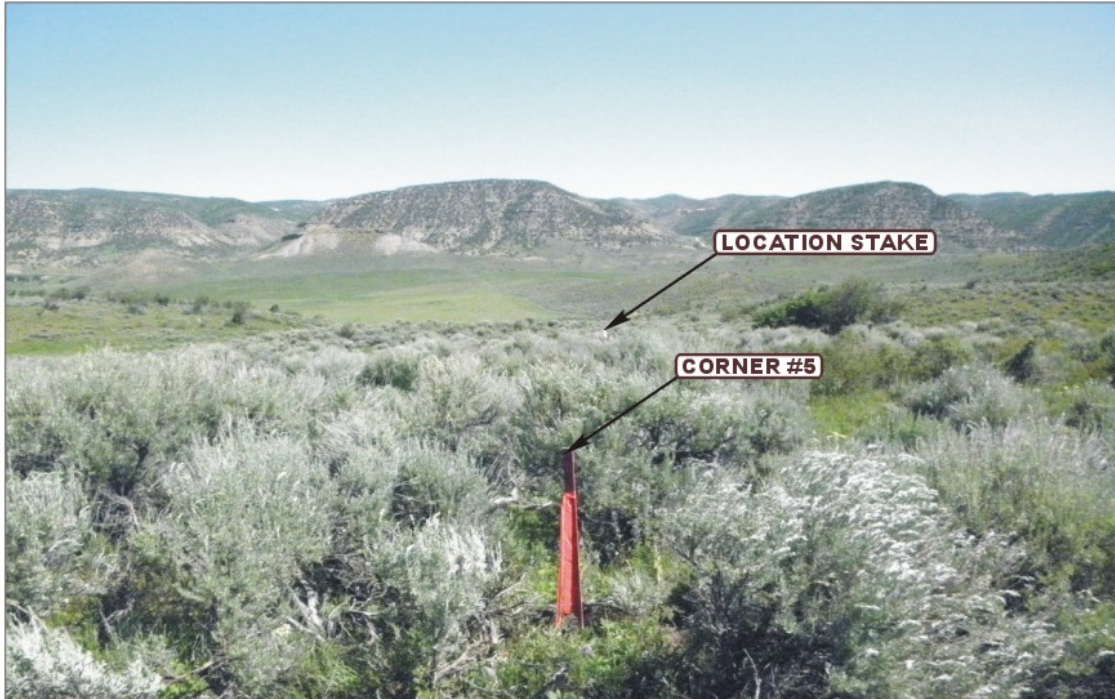


PHOTO: VIEW FROM CORNER #5 TO LOCATION STAKE

CAMERA ANGLE: NORTHERLY



PHOTO: VIEW FROM BEGINNING OF PROPOSED ACCESS

CAMERA ANGLE: NORTHEASTERLY



UELS Uintah Engineering & Land Surveying
85 South 200 East Vernal, Utah 84078
(435) 789-1017 * FAX (435) 789-1813

LOCATION PHOTOS

07 **07** **11**
MONTH DAY YEAR

PHOTO
P1

TAKEN BY: D.N.

DRAWN BY: S.F.

REVISED: 00-00-00

SWEPI LP
HERRING DRAW #1-33
LOCATED IN MOFFAT COUNTY, COLORADO
SECTION 33, T5N, R90W, 6th P.M.



PHOTO: VIEW OF LOCATION STAKE

CAMERA ANGLE: NORTHERLY

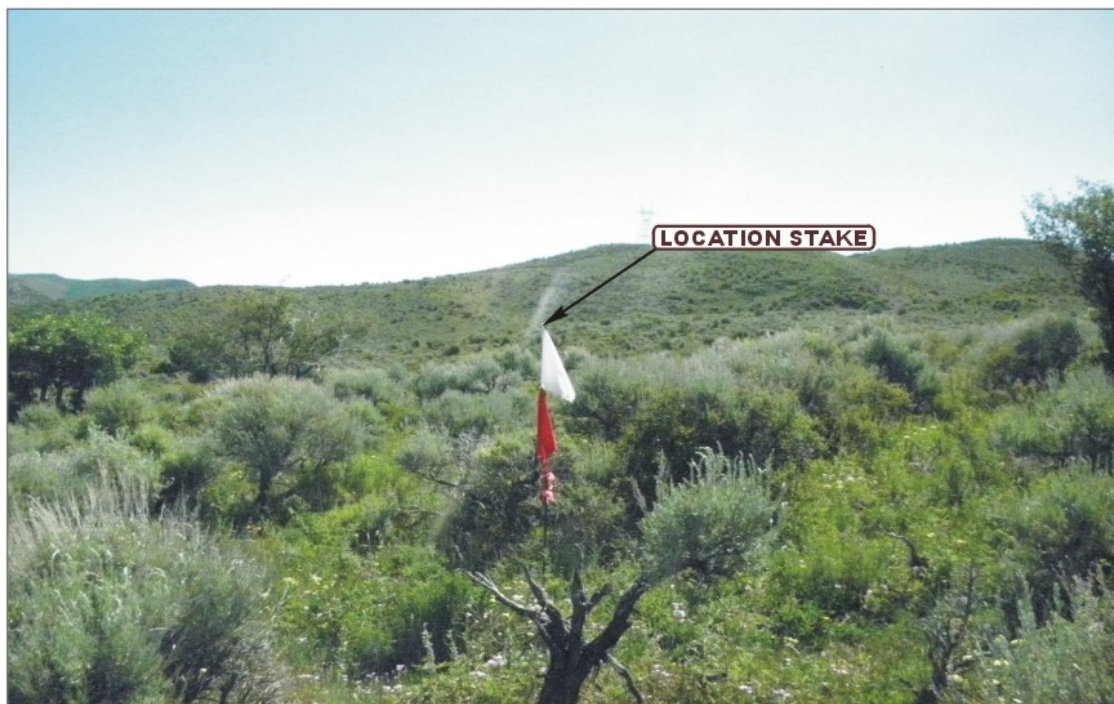


PHOTO: VIEW OF LOCATION STAKE

CAMERA ANGLE: EASTERLY



UELS Uintah Engineering & Land Surveying
85 South 200 East Vernal, Utah 84078
(435) 789-1017 * FAX (435) 789-1813

LOCATION PHOTOS

07 **07** **11**
MONTH DAY YEAR

PHOTO
P2

TAKEN BY: D.N.

DRAWN BY: S.F.

REVISED: 00-00-00

SWEPI LP
HERRING DRAW #1-33
LOCATED IN MOFFAT COUNTY, COLORADO
SECTION 33, T5N, R90W, 6th P.M.



PHOTO: VIEW OF LOCATION STAKE

CAMERA ANGLE: SOUTHERLY



PHOTO: VIEW OF LOCATION STAKE

CAMERA ANGLE: WESTERLY



- Since 1964 -

UELS

Uintah Engineering & Land Surveying
85 South 200 East Vernal, Utah 84078
(435) 789-1017 * FAX (435) 789-1813

LOCATION PHOTOS

07 07 11
MONTH DAY YEAR

PHOTO
P3

TAKEN BY: D.N.

DRAWN BY: S.F.

REVISED: 00-00-00