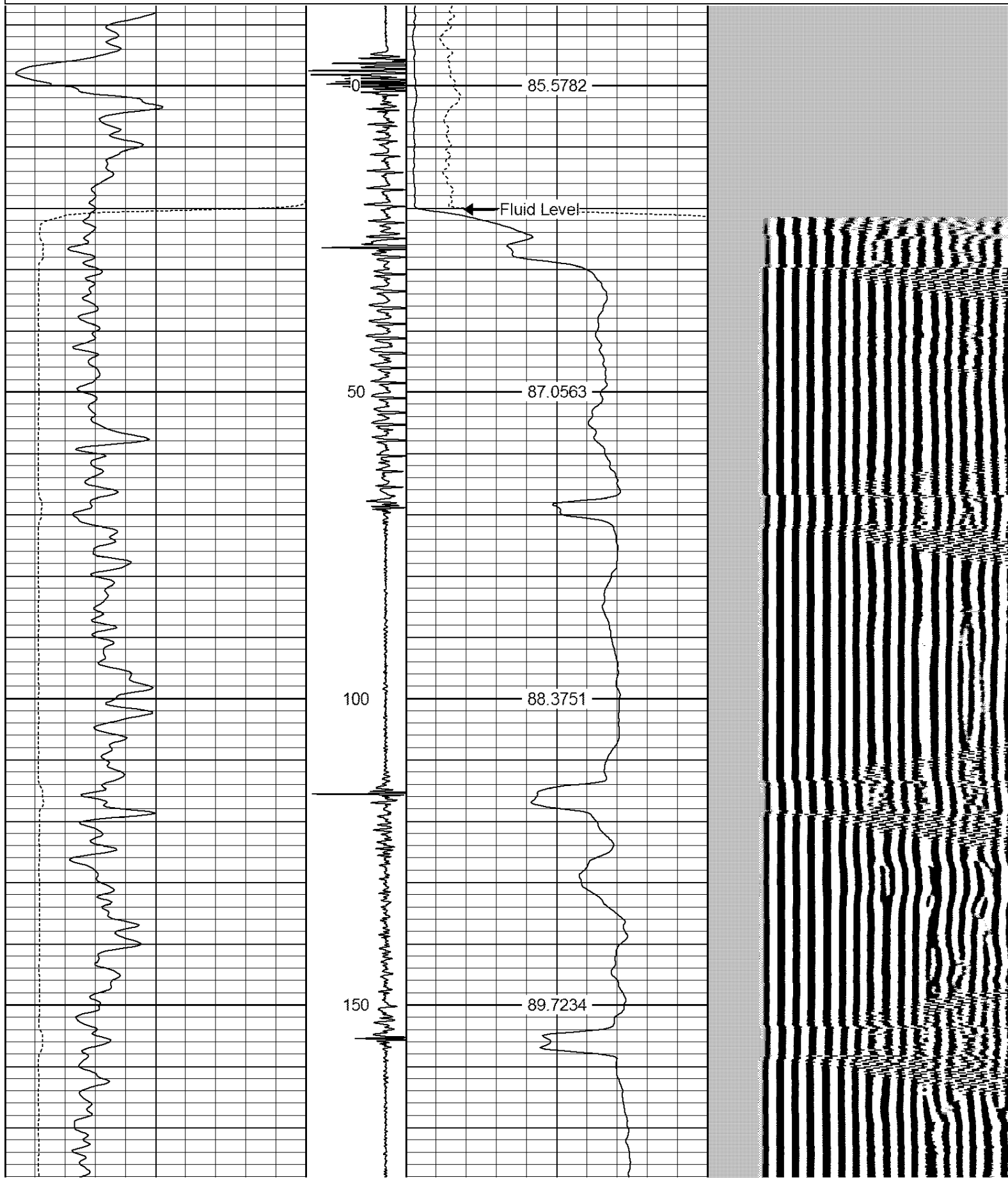
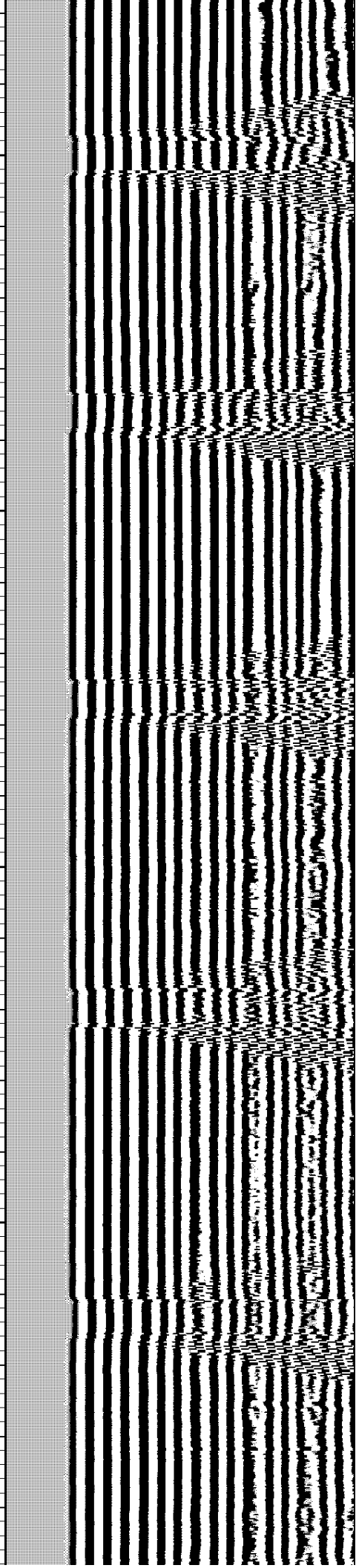
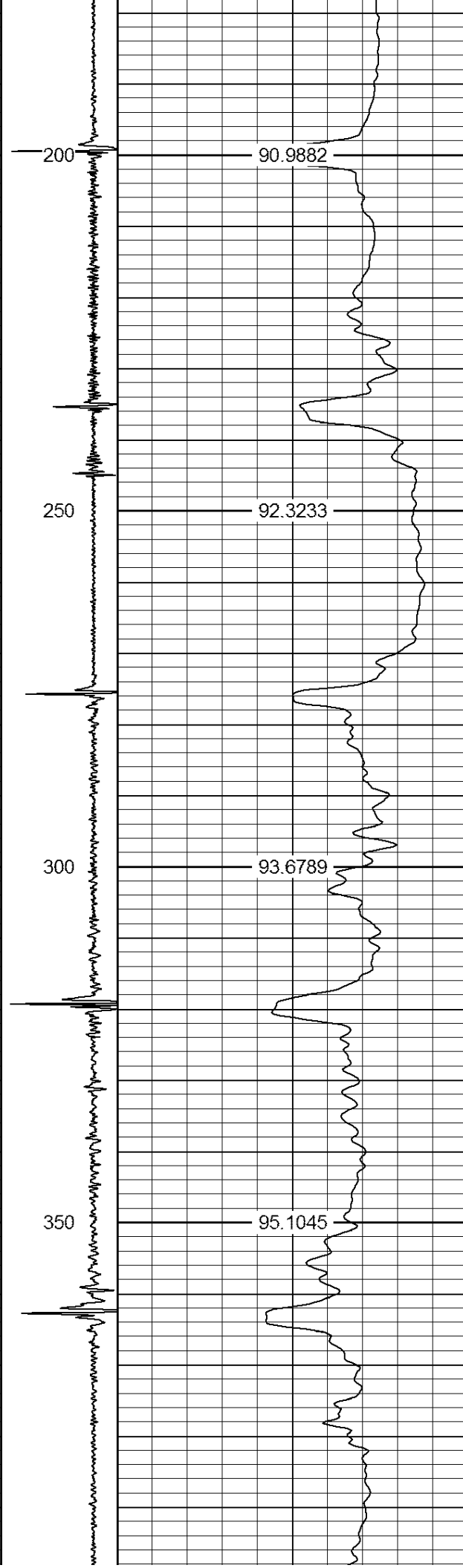
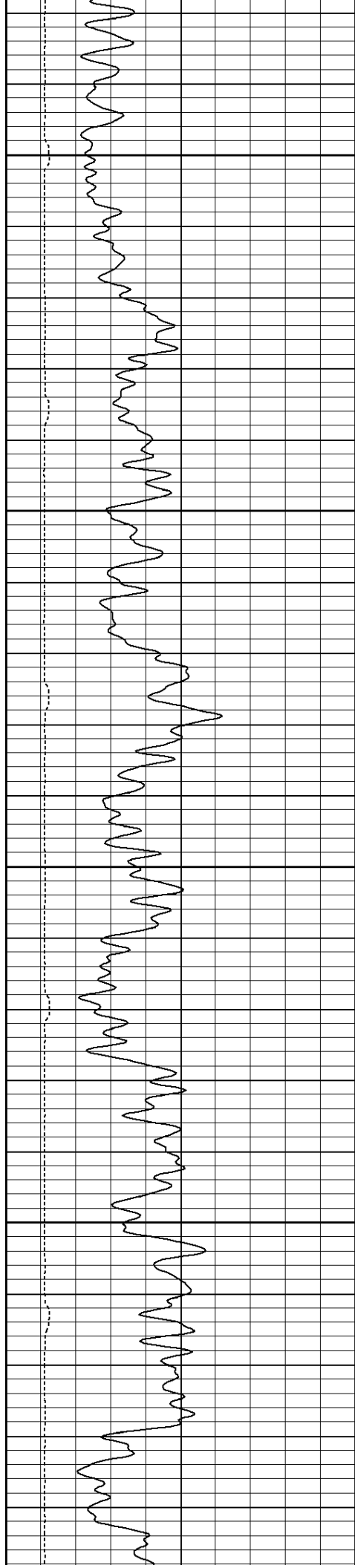
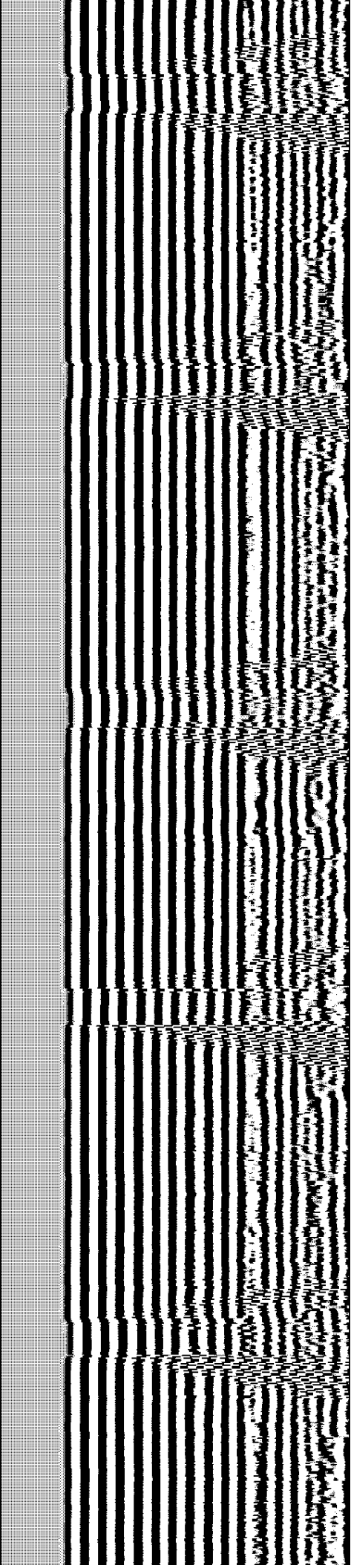
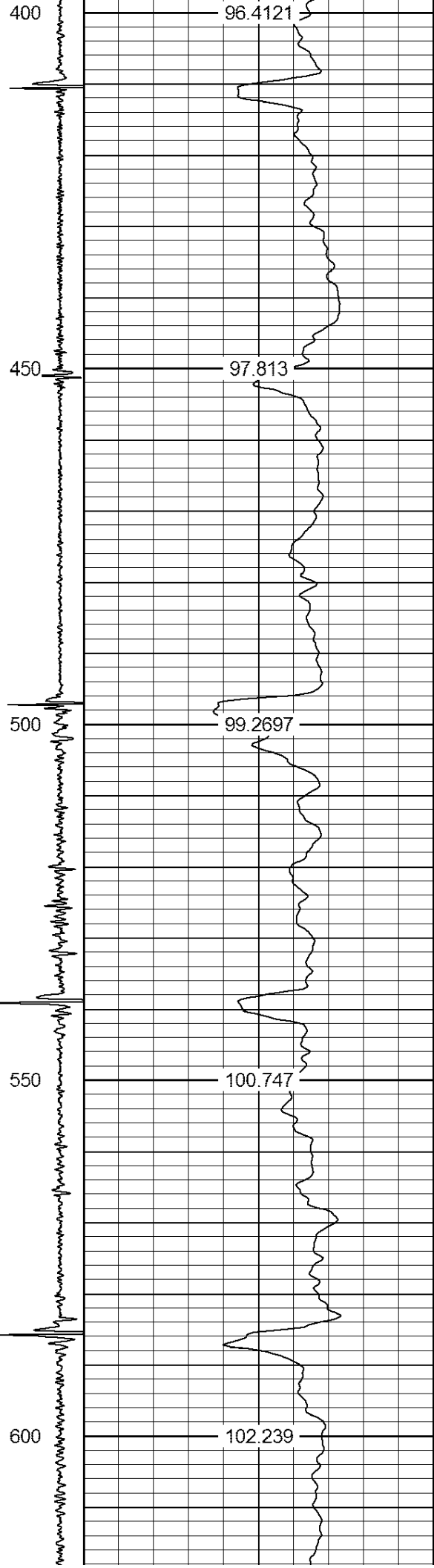
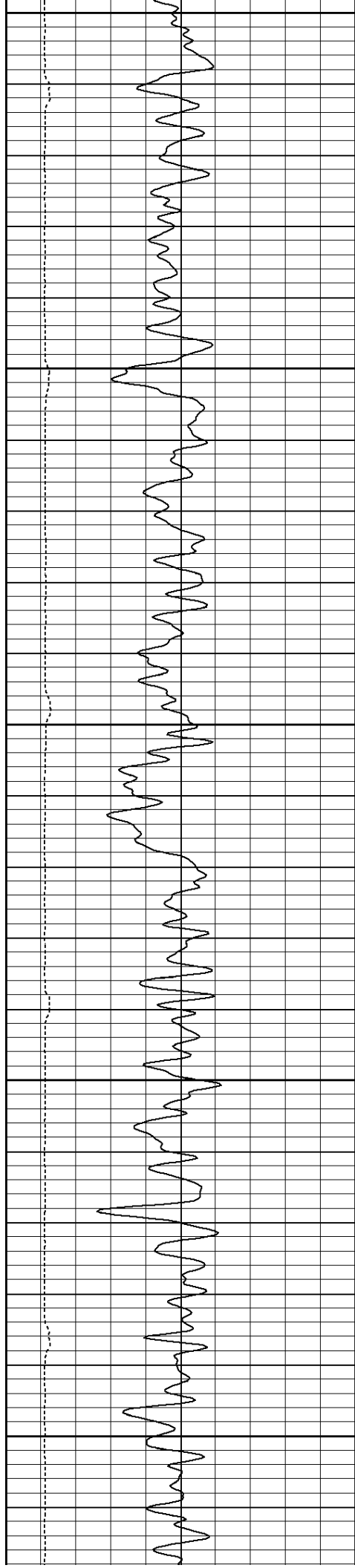


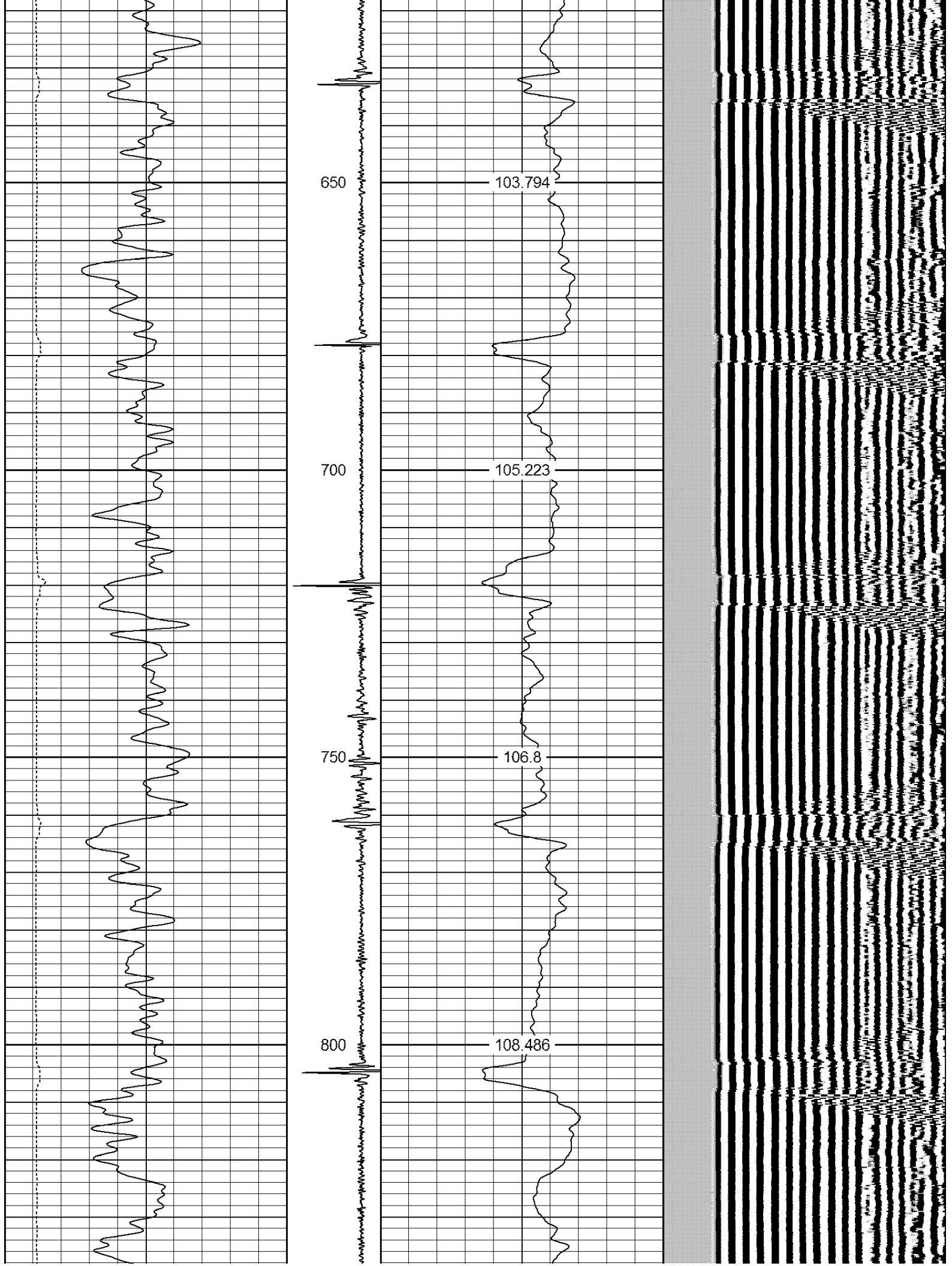
			PTS275	2.83	2.75	
HEADVOLT	13.25					
IntTemp	11.83					
WVF3FT	8.58					
WVFCAL	8.58					
WVFS1	8.58					
WVFS2	8.58					
WVFS3	8.58					
WVFS4	8.58					
WVFS5	8.58					
WVFS6	8.58					
WVFS7	8.58					
WVFS8	8.58					
WVF5FT	7.58					
			RBT-Probe (Base) Probe Radlii Bond Tool with Digital Telemetry	8.92	2.75	90.00
CCL	3.64					
			GR-Probe (275) Probe 2.75"	4.33	2.75	30.00
GR	0.90					
Dataset: kalsen #1.db: field/well/run1/pass3 Total Length: 17.08 ft Total Weight: 130.00 lb O.D. 2.75 in						

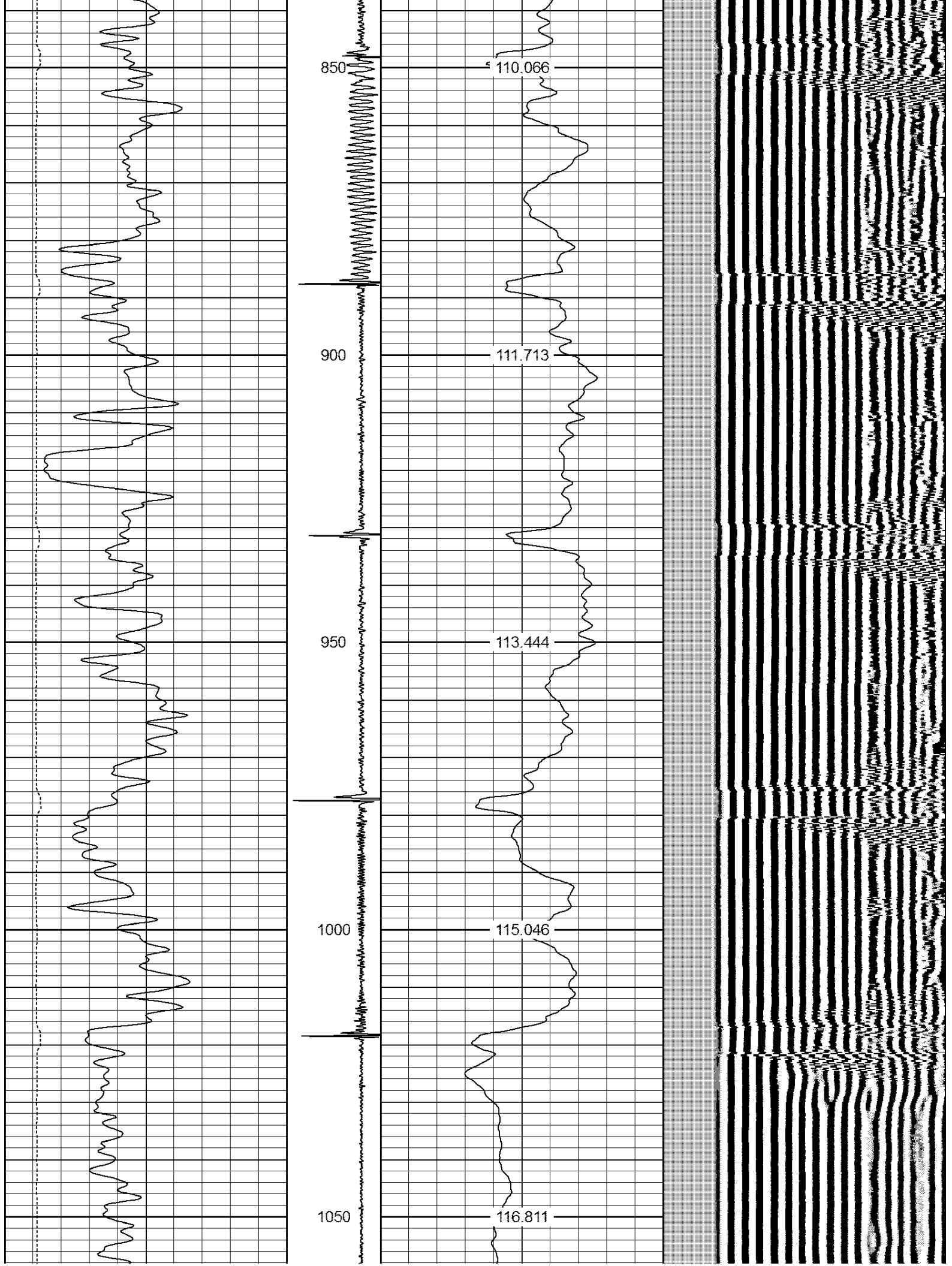
200	TT (usec)	800	-4	CCL	1	0	AMP (mV)		100	200	VDL		1200	
0	GR (GAPI)	200	LSPD (ft/min)			0	AMPx5 (mV)		20					
200	GR (GAPI)	400						IntTemp						
						0	100	(degF)						

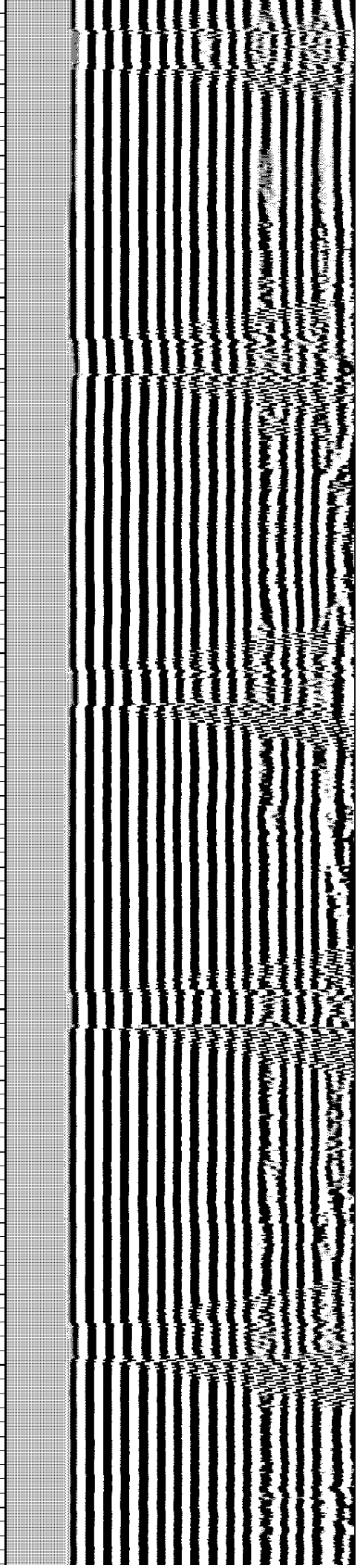
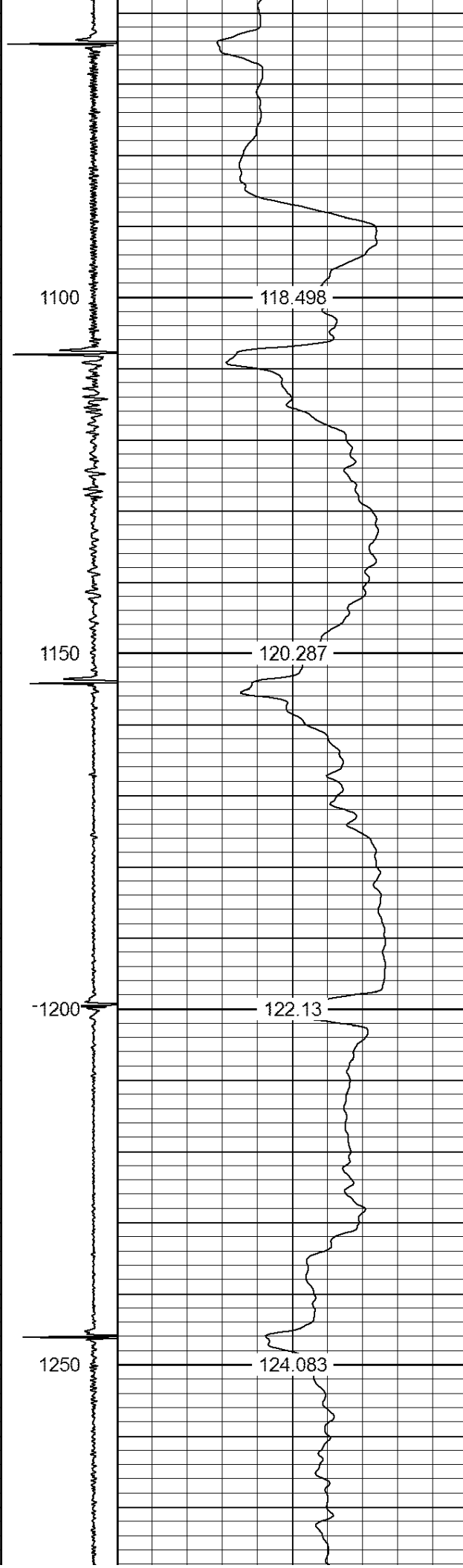
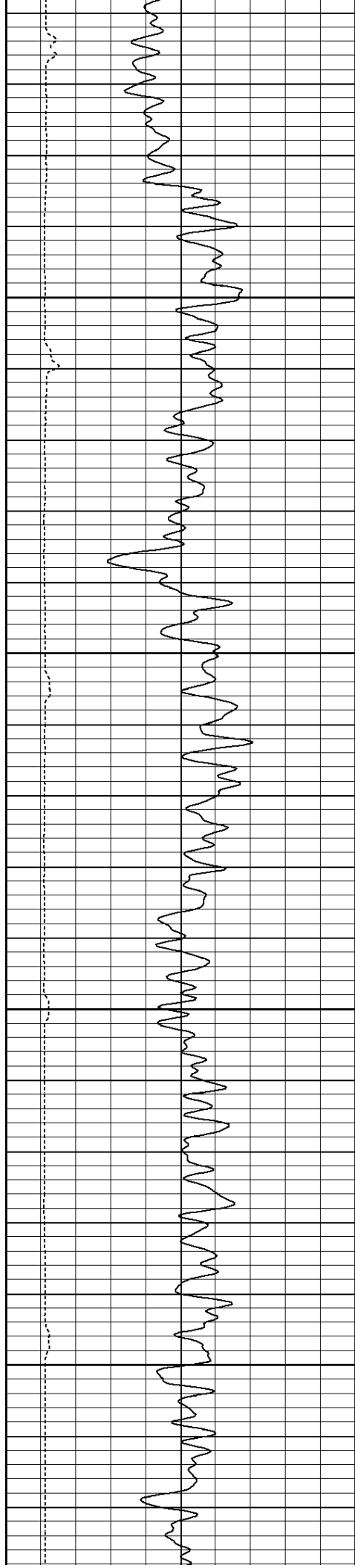


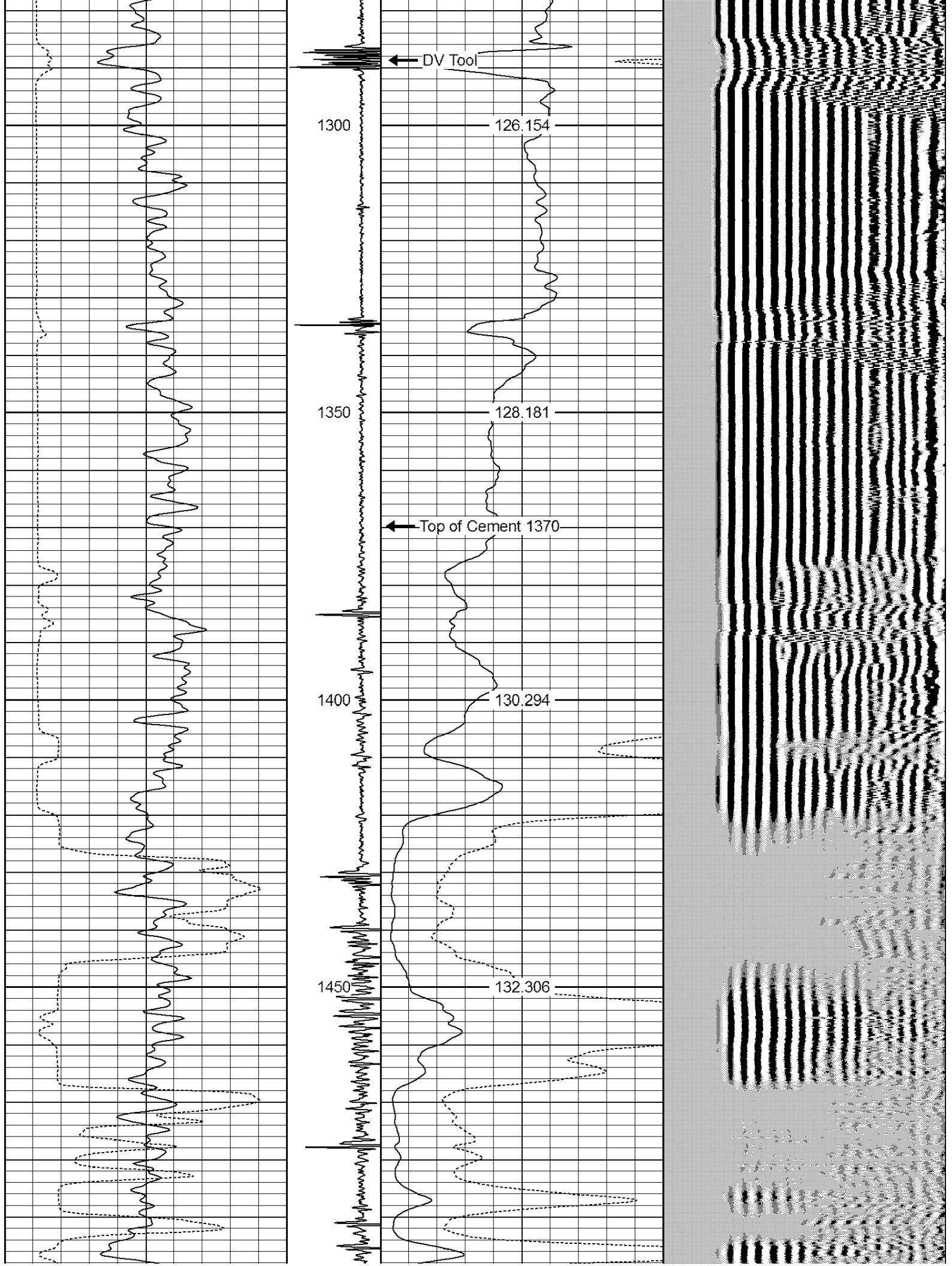


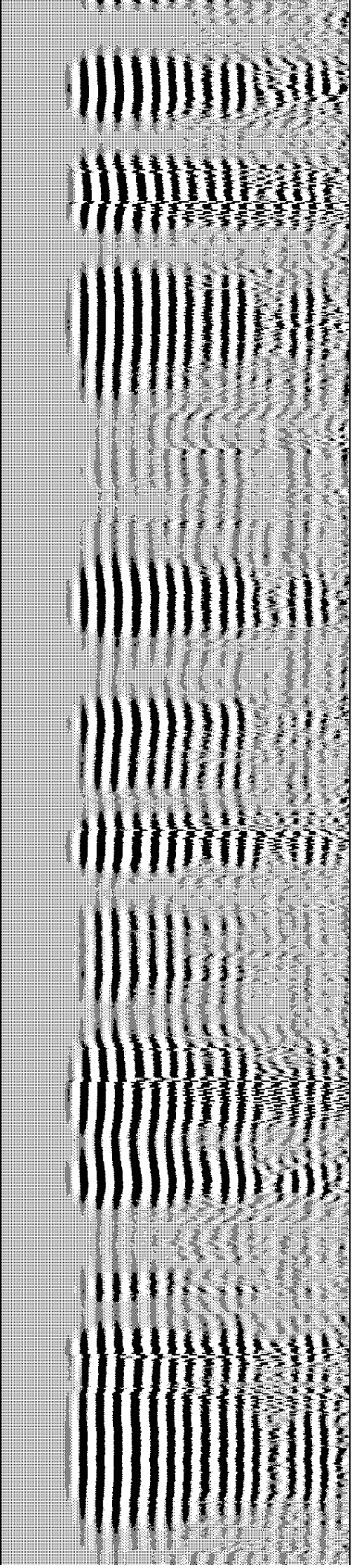
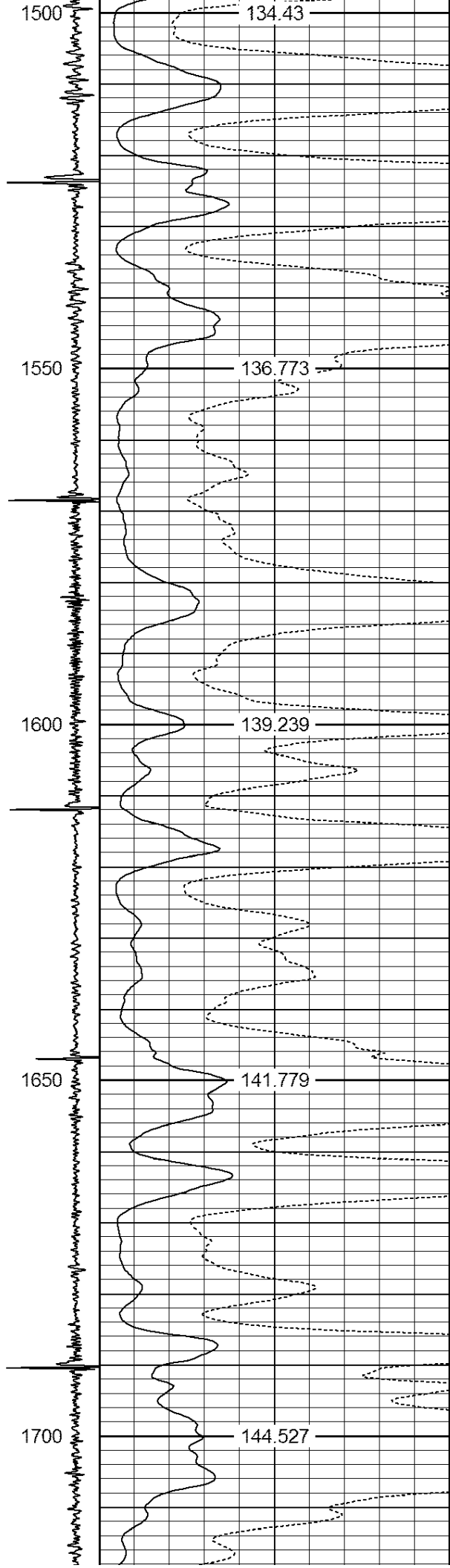
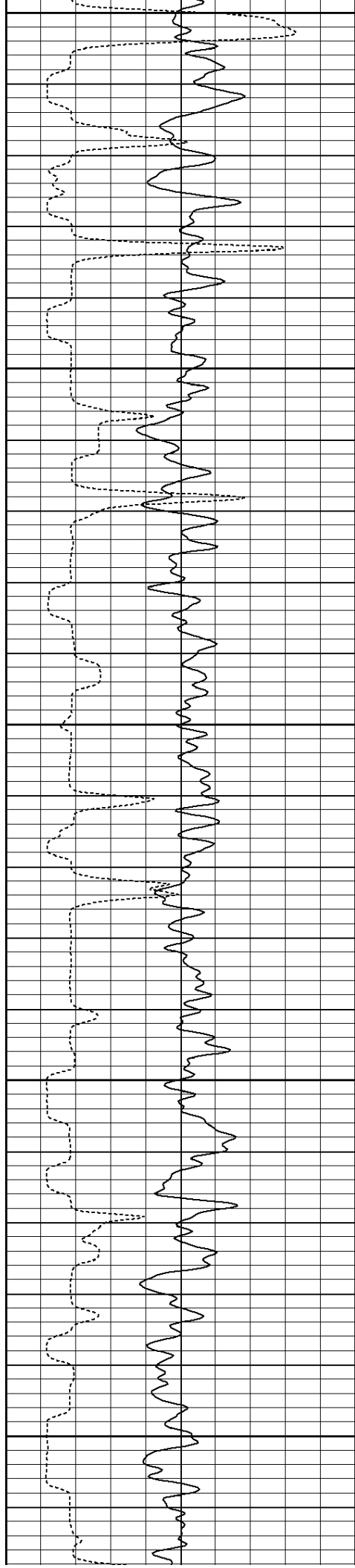


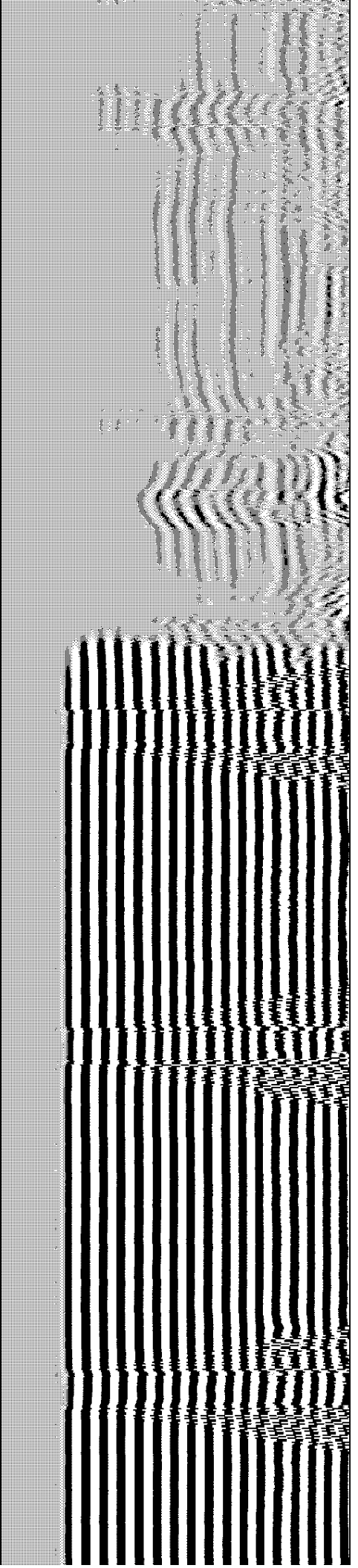
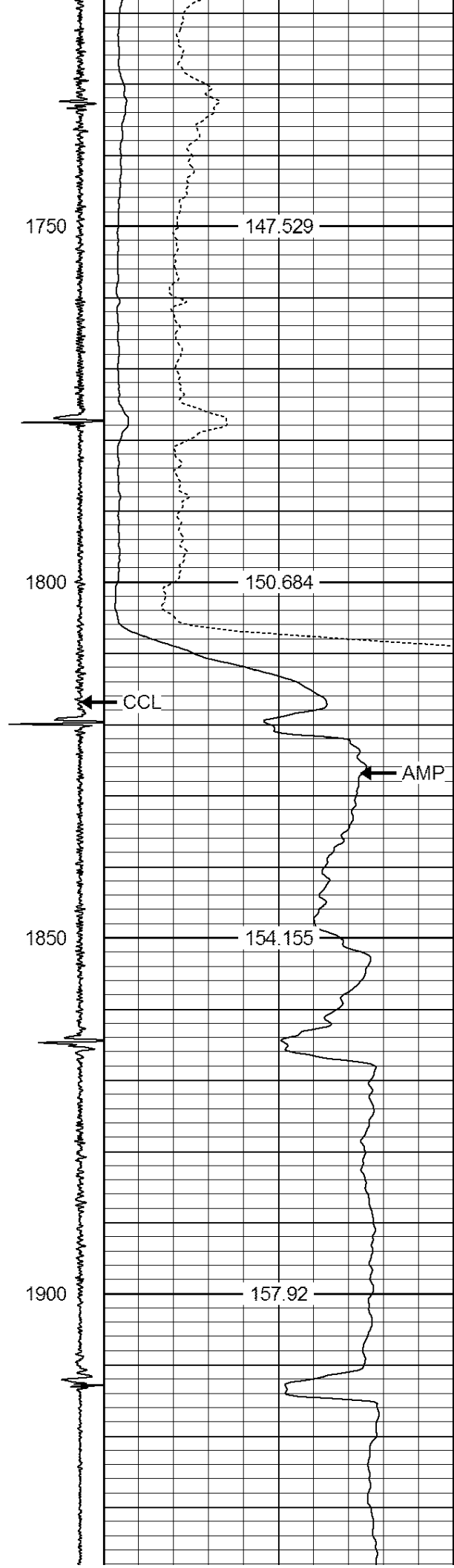
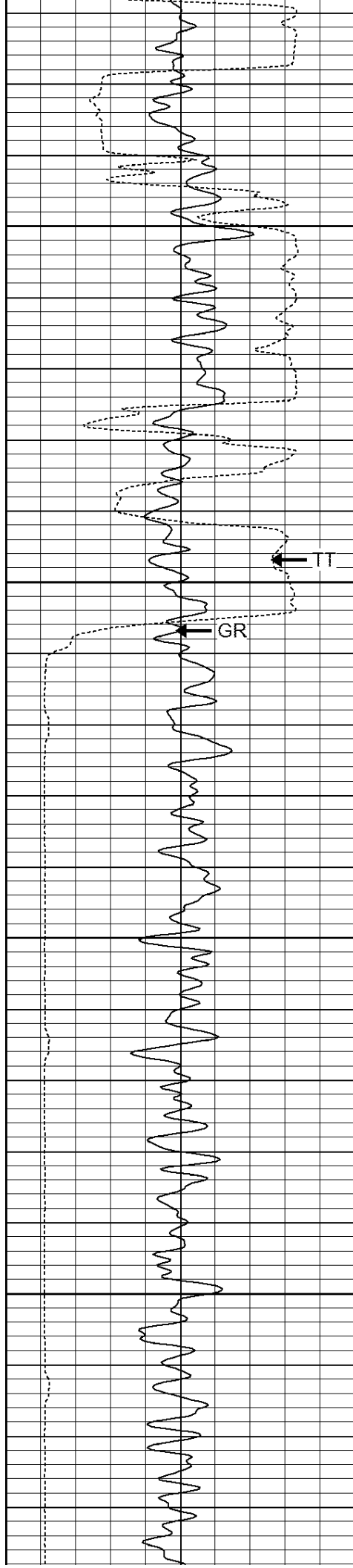


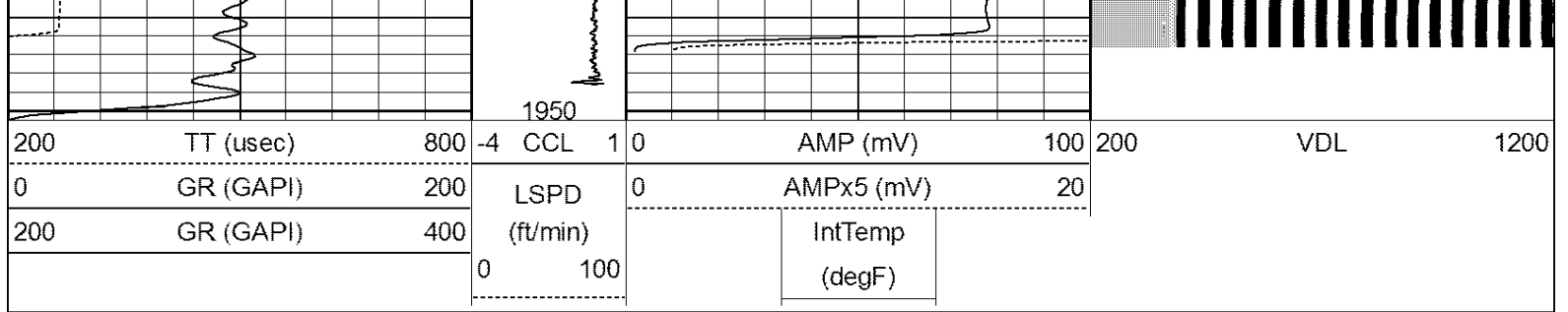




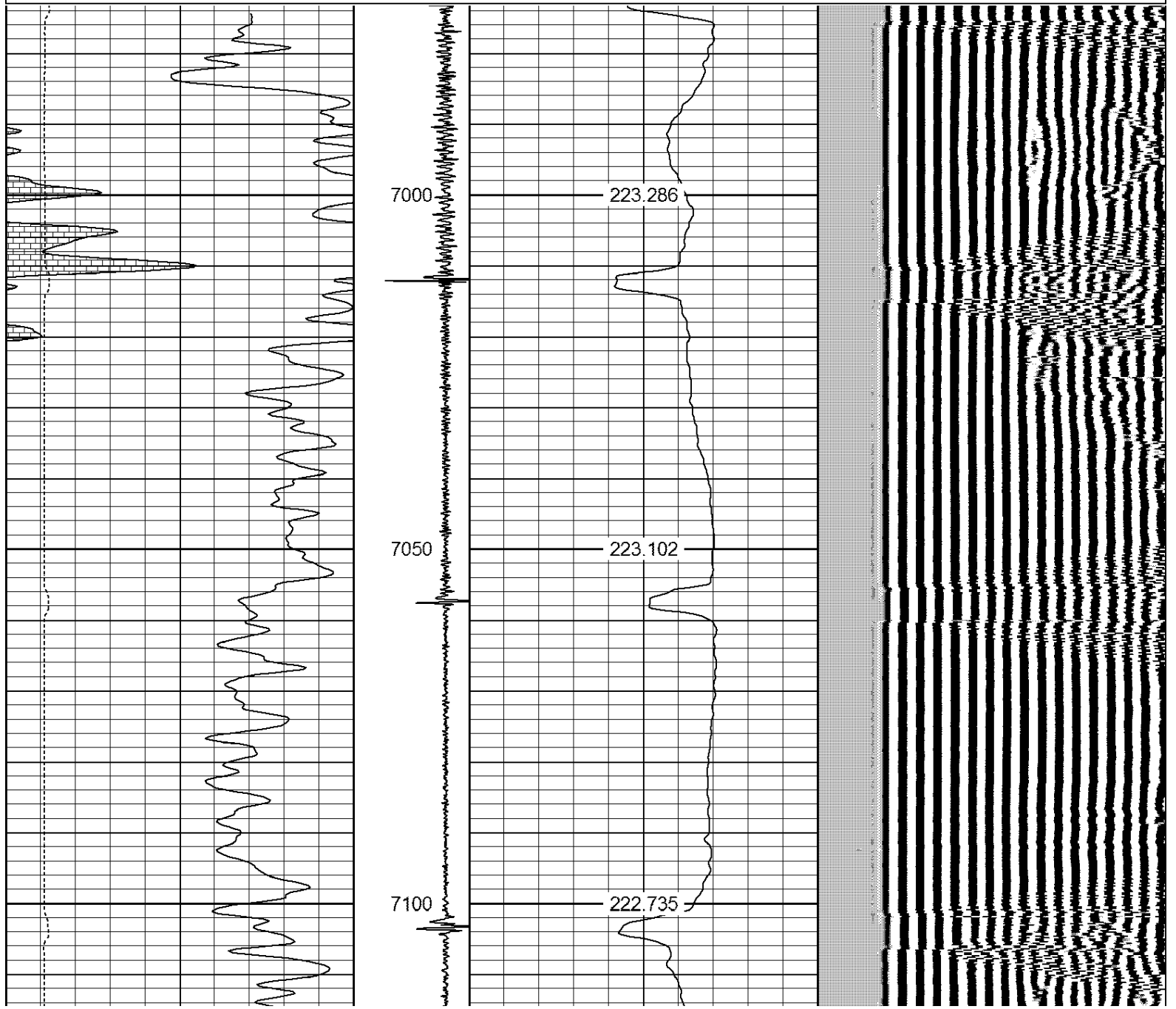
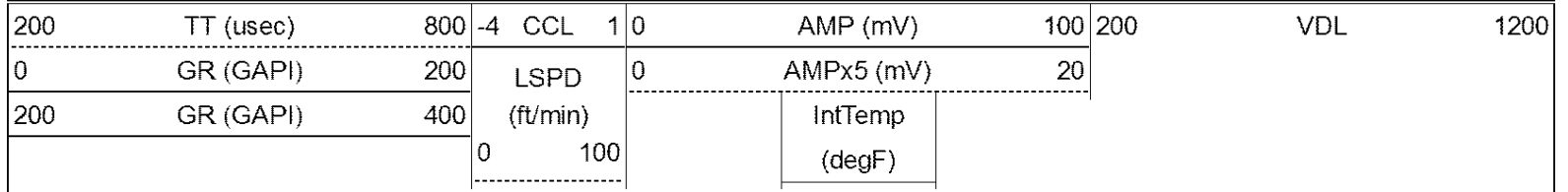


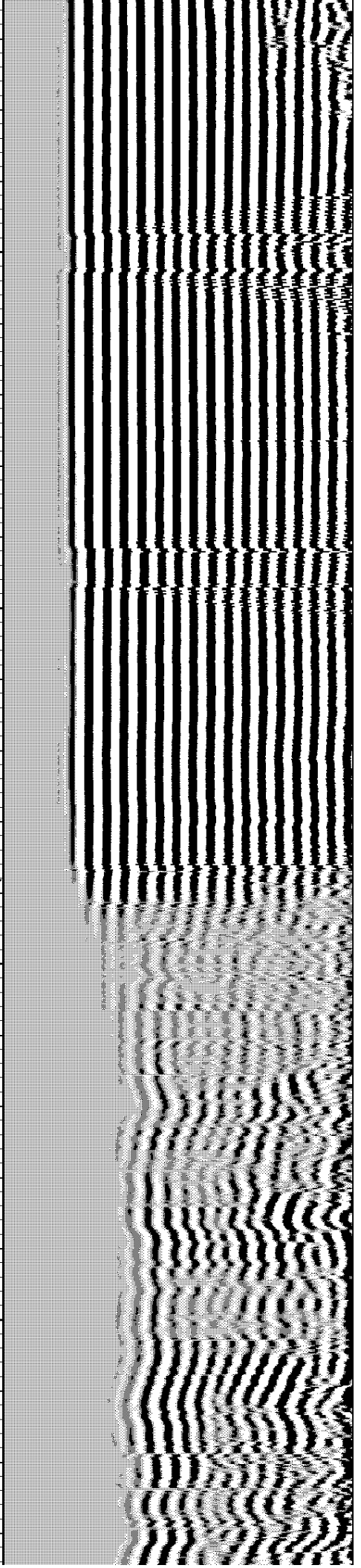
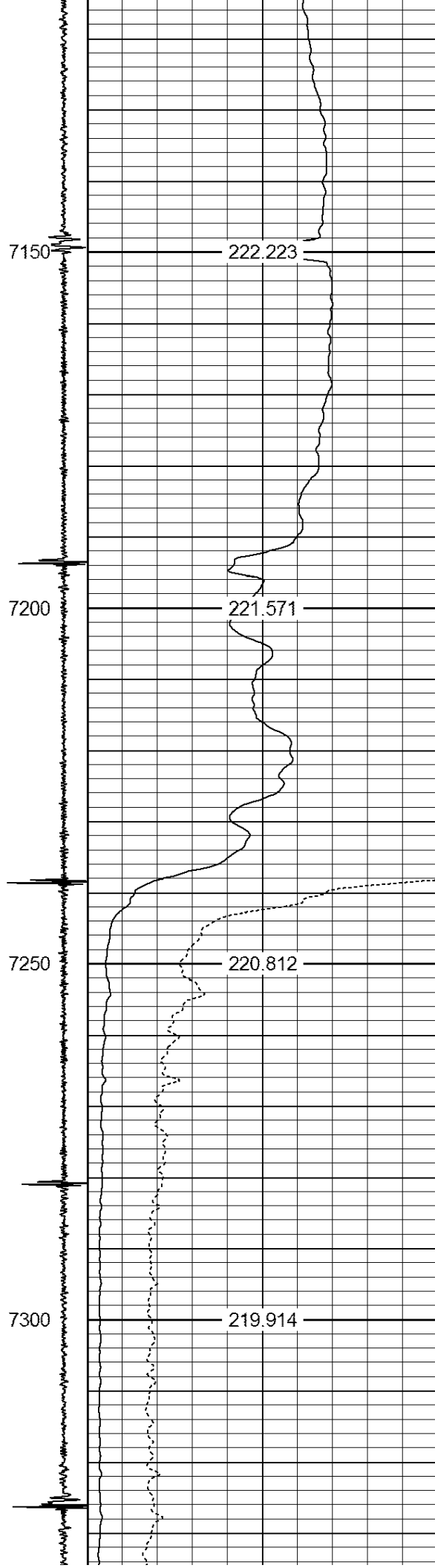
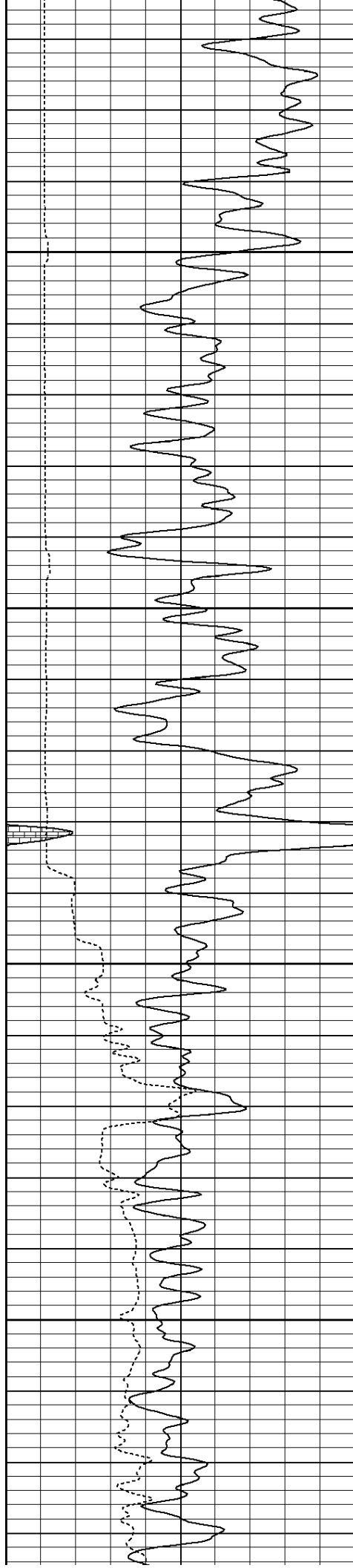


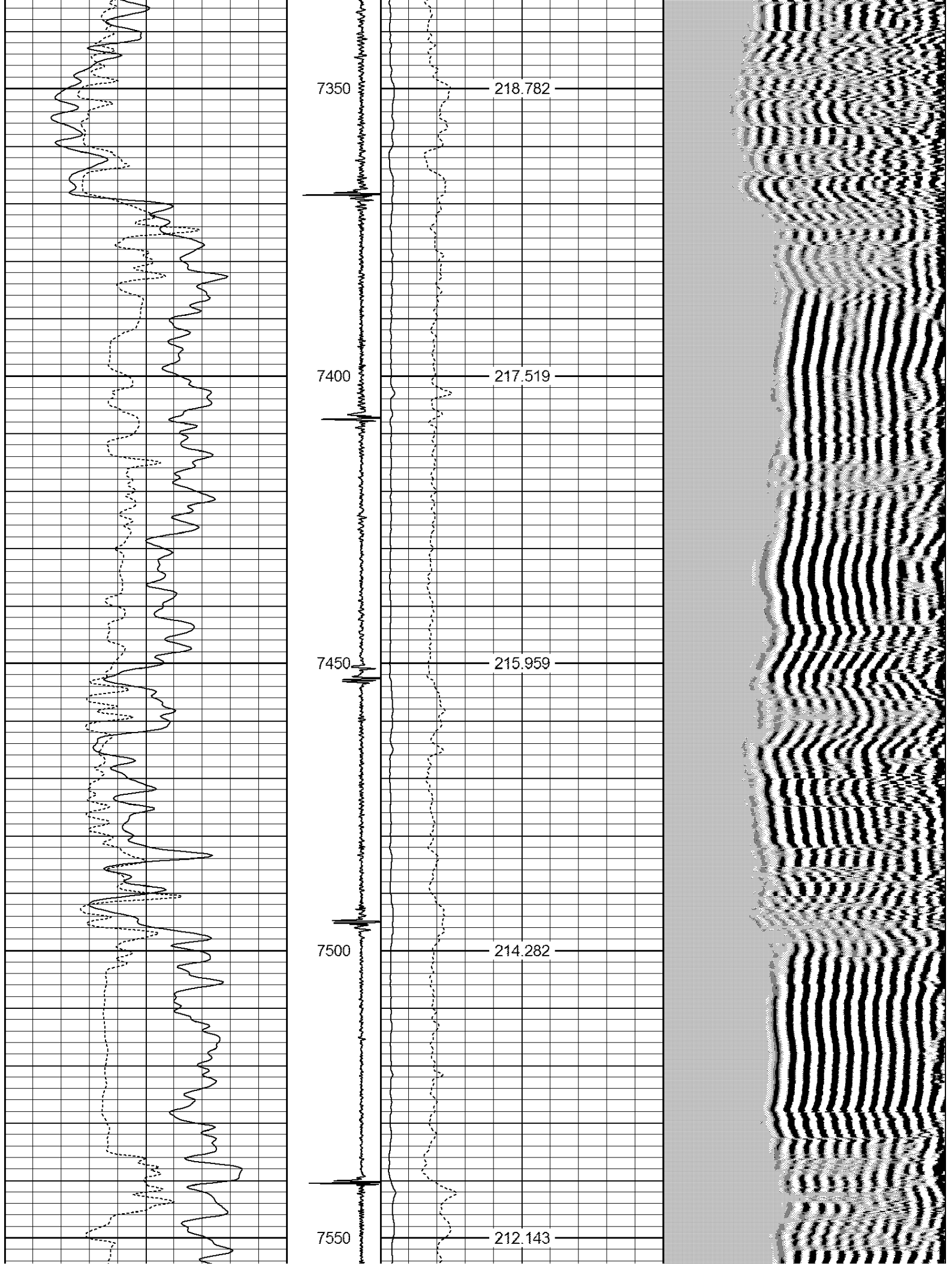


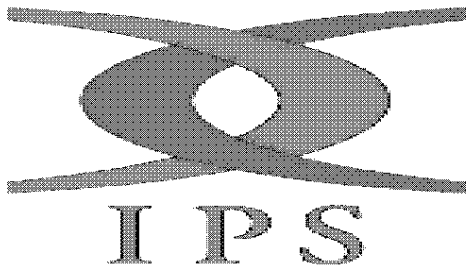
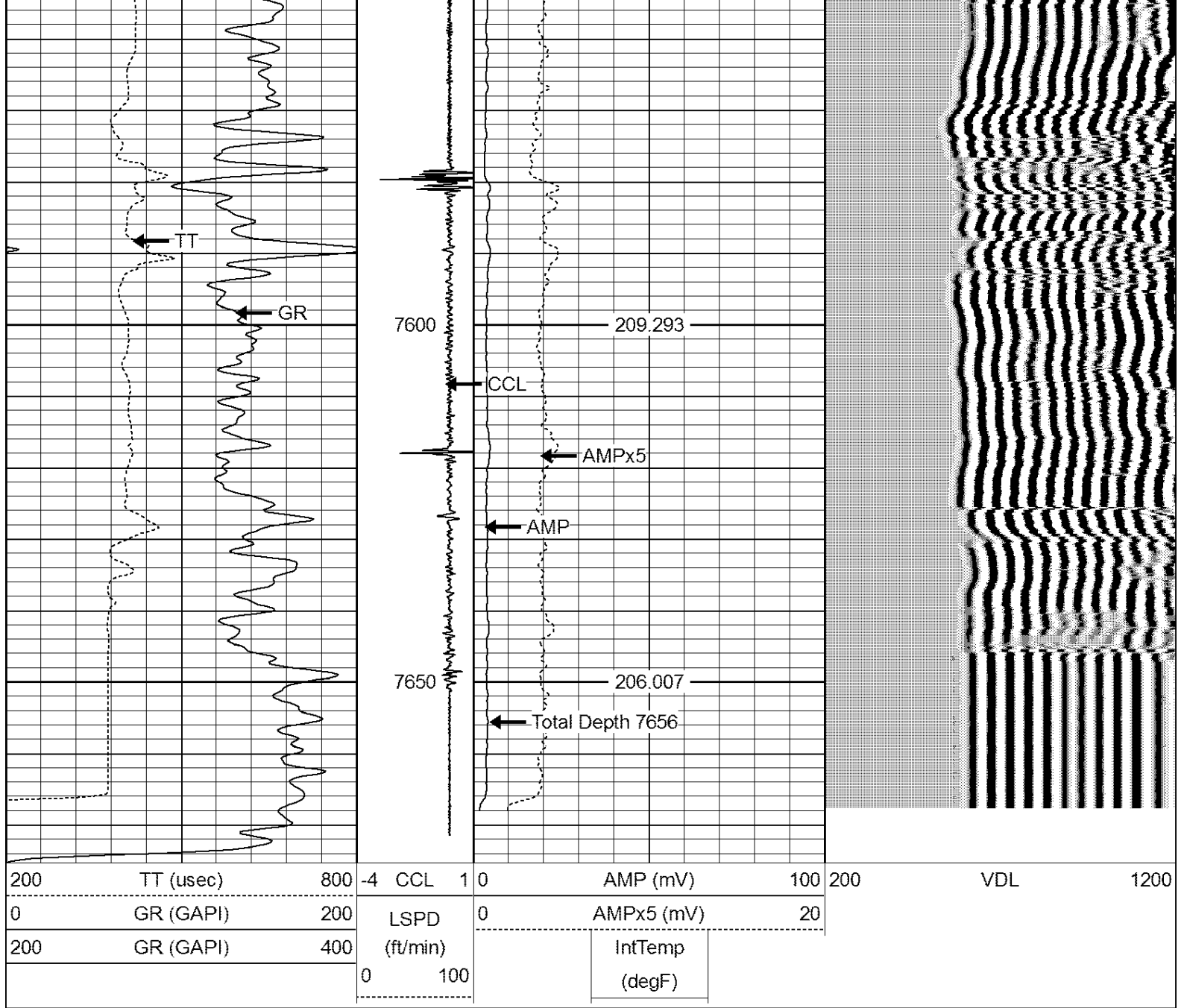


Database File: kalsen #1.db
 Dataset Pathname: pass2
 Presentation Format: cbl dual
 Dataset Creation: Mon Dec 12 10:08:44 2011 by Log Std Casedhole 09061
 Charted by: Depth in Feet scaled 1:240









Company Overland Resources
 Well Kalsen #1
 Field Wattenberg
 County Adams
 State Colorado