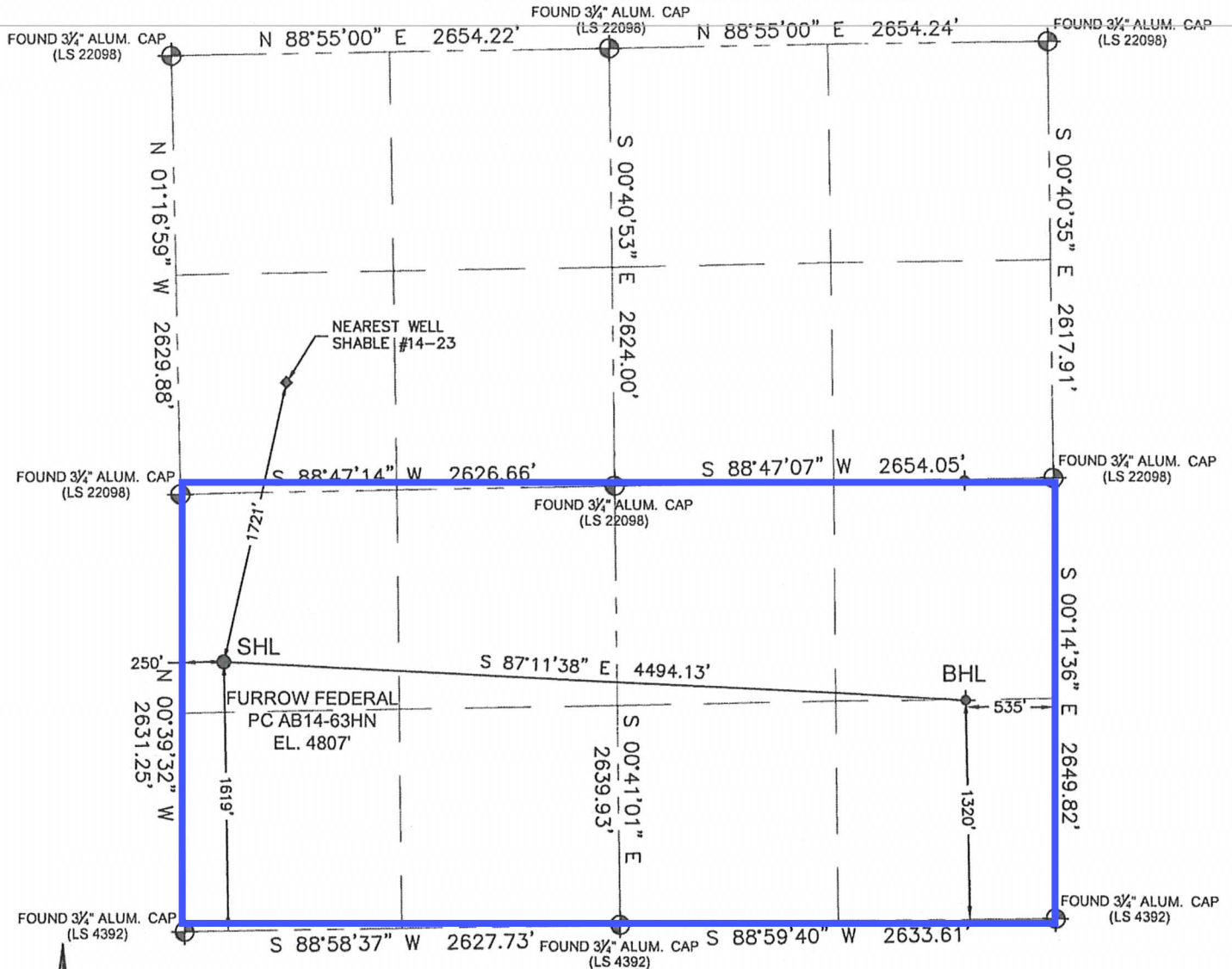


WELL LOCATION CERTIFICATE

THIS MAP DOES NOT REPRESENT A BOUNDARY SURVEY

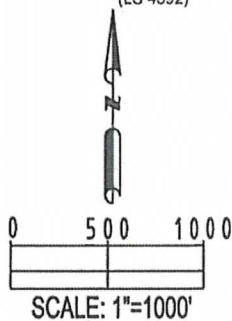
SECTION: 14
TOWNSHIP: 7N
RANGE: 64W

In accordance with a request from Scott Lewis with Noble Energy Inc. Petroleum Field Services, LLC has determined the surface location of the FURROW FEDERAL PC AB14-63HN to be 1619' from the SOUTH line and 250' from the WEST line and the bottom hole to be 1320' from the SOUTH line and 535' from the EAST line as measured at right angles from the section line of Section 14, Township 7 North, Range 64 West of the Sixth Principal Meridian, County of Weld, State of Colorado.

I hereby state that this Well Location Certificate was prepared by me, or under my direct supervision, that the fieldwork was completed on 07/05/11, for and on behalf of Noble Energy Inc., that this is not a Land Survey Plat or an Improvement Survey Plat, and that it is not to be relied upon for establishment of fence, building, or other future improvement lines.

SURFACE LOCATION:
LATITUDE: 40.57045°N
LONGITUDE: 104.52514°W
PDOP: 1.4
ELEV: 4807'
1/4 1/4: NWW 1/4 SW 1/4
NEAREST PROPERTY LINE: 250' West

BOTTOM HOLE:
LATITUDE: 40.56971°N
LONGITUDE: 104.50899°W



Note:

- 1) Bearings shown are Grid Bearings of the Colorado State Plane Coordinate System, North Zone, North American Datum 1983/2007. The lineal dimensions as shown herein are grid distances based upon the "U.S. Survey Foot."
- 2) Ground elevations are based on an observed GPS elevation (NAVD 1988 DATUM).
- 3) NEAREST EXISTING WELL: SHABLE #14-23 1721' NE
- 4) IMPROVEMENTS: See LOCATION DRAWING exhibit for all visible improvements within 400' of disturbed area.
- 5) SURFACE USE: RANGELAND
- 6) INSTRUMENT OPERATOR: CHRIS BOUB

Note:

According to Colorado law, you must commence any legal action based upon any defect in this W.L.C. within three years after you first discover such defect. In no event, may any action based upon any defect in this survey be commenced more than ten years after the date of this certification shown hereon. (13-80-105 C.R.S.)

LEGEND

- ⊕ = FOUND MONUMENT
- = PROPOSED WELL
- ⬤ = BOTTOM HOLE
- ◆ = EXISTING WELL

MARK A. HALL, PLS 36073
COLORADO LICENSED PROFESSIONAL LAND SURVEYOR
FOR AND ON BEHALF OF P.F.S., LLC

