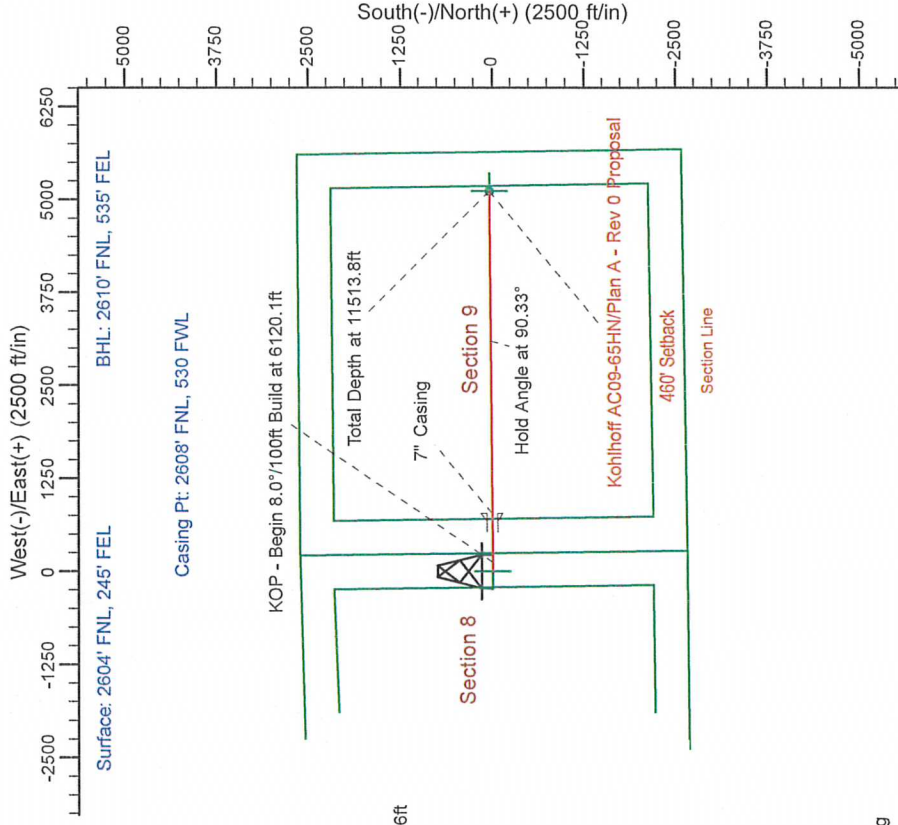
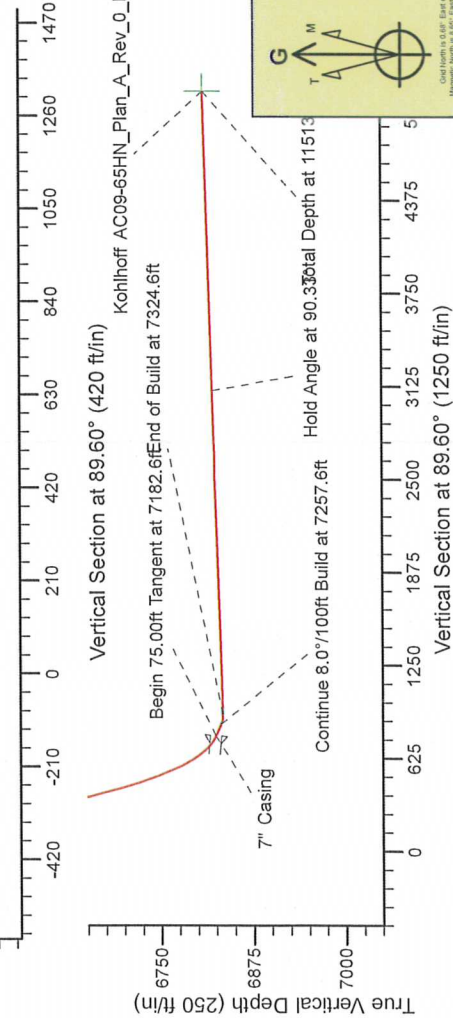
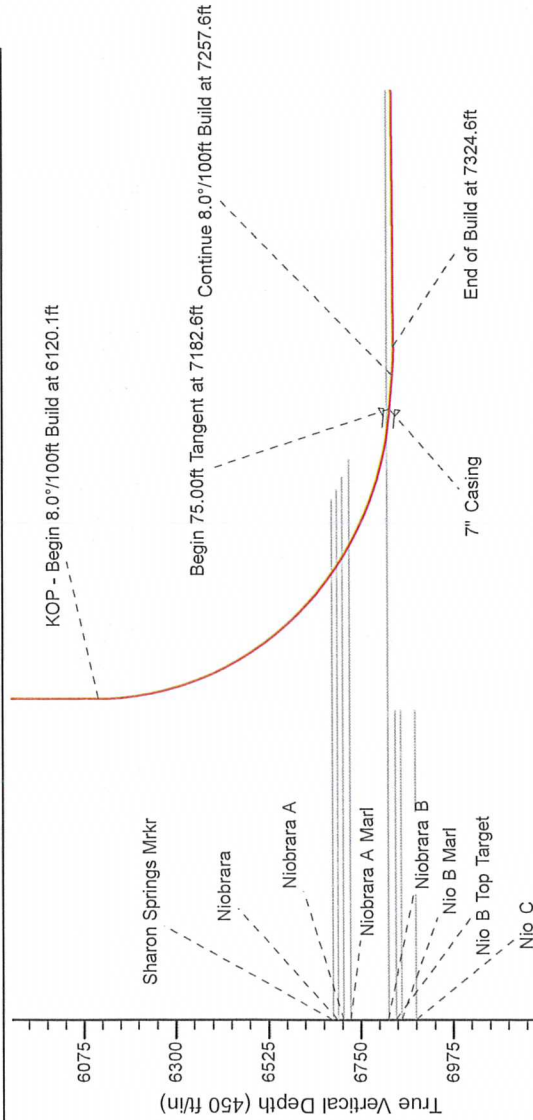


Project: Weld County, CO (NAD 83)
Site: Sec. 8, T7N, R63W
Well: Kohlhoff AC09-65HN
Wellbore: Plan A - Rev 0 (PERMITTING PLAN ONLY)
Design: Plan A - Rev 0 Proposal

SECTION DETAILS

Sec	MD	Inc	Azi	TVD	+N/-S	+E/-W	Dleg	TFace	VFace	Target
1	0.0	0.00	0.00	0.0	0.0	0.00	0.00	0.00	0.0	0.0
2	2500.0	0.00	0.00	2500.0	0.0	0.00	0.00	0.00	0.0	0.0
3	2900.0	10.00	90.00	2898.0	0.0	34.8	2.50	90.00	34.8	0.0
4	3224.6	10.00	90.00	3217.6	0.0	91.2	0.00	0.00	91.2	0.0
5	3624.6	0.00	0.00	3615.6	0.0	126.0	2.50	180.00	126.0	0.0
6	6120.1	0.00	0.00	6111.1	0.0	126.0	0.00	0.00	126.0	0.0
7	7182.6	85.00	89.59	6824.6	4.7	779.8	8.00	89.59	779.8	0.0
8	7257.6	85.00	89.59	6831.1	5.2	854.5	0.00	0.00	854.5	0.0
9	7324.2	90.33	89.59	6833.8	5.7	921.0	8.00	0.00	921.0	0.0
10	1513.8	90.33	89.60	6809.6	35.4	5110.4	0.00	62.11	5110.5	0.0

Kohlhoff AC09-66HN_Plan_A_Rev_0_BHL_Tg



WELL DETAILS: Kohlhoff AC09-65HN (NAD83 Geodetic System)

Ground Level: 4874.0
Northing: 444720.24
Easting: 1003094.87
Latitude: 40° 35' 19.608 N
Longitude: 104° 27' 8.136 W

Plan: Plan A - Rev 0 Proposal (Kohlhoff AC09-65HN/Plan A - Rev 0 (PERMITTING PLAN ONLY))

Created By: Jose Patino
Date: 12/01, December 02 2011

