

US ROCKIES REGION PLANNING

COLORADO NORTHERN ZONE - 83

WELD_WEISS PAD

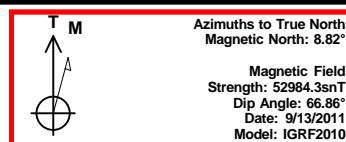
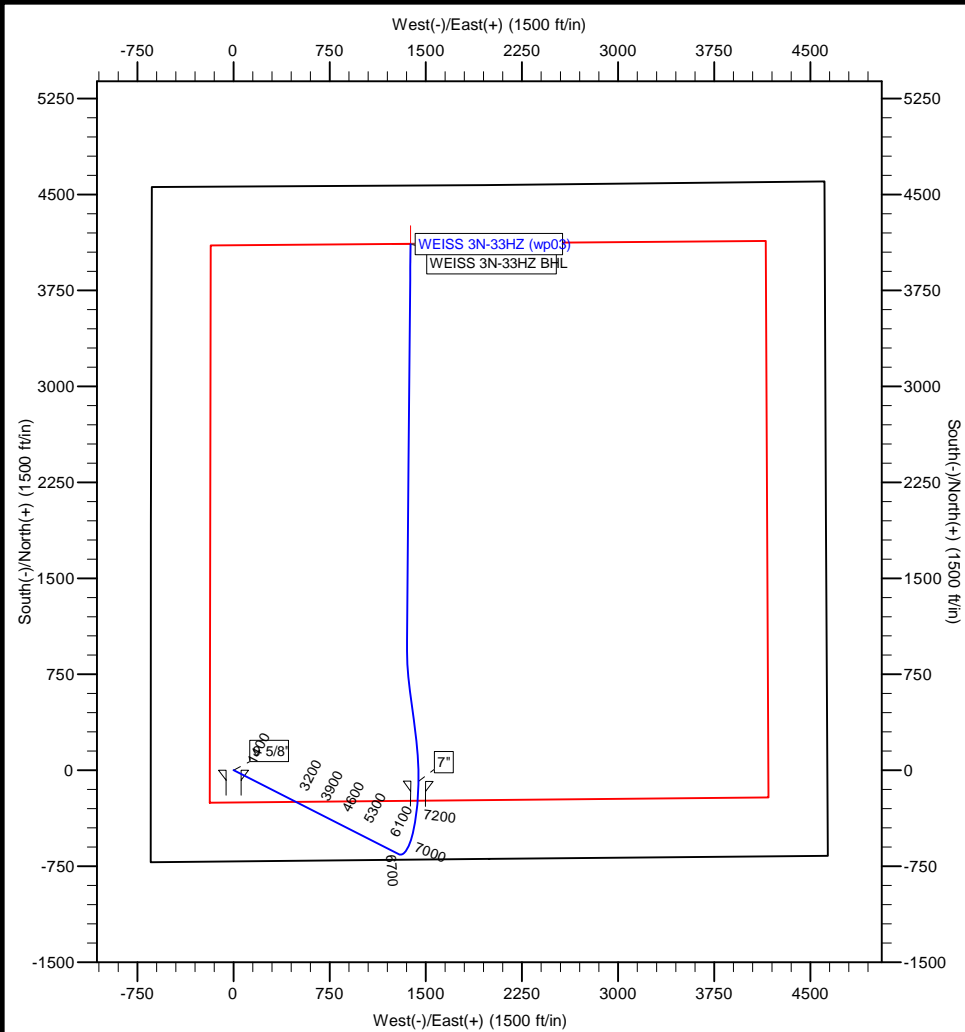
WEISS 3N-33HZ

WEISS 3N-33HZ

Plan: WEISS 3N-33HZ (wp03)

Standard Planning Report

09 December, 2011



Project: COLORADO NORTHERN ZONE - 83
Site: WELD WEISS PAD
Well: WEISS 3N-33HZ
Wellbore: WEISS 3N-33HZ
Section:
SHL:
Design: WEISS 3N-33HZ (wp03)
Latitude: 40.176158
Longitude: -104.789317
GL: 4914.01
KB: 17' RKB + 4914' GL @ 4931.01ft

WELL DETAILS: WEISS 3N-33HZ

+N/-S	+E/-W	Northing	Ground Level: Easting	4914.01 Latitude	Longitude	Slot
0.00	0.00	1307813.01	3198583.98	40.176158	-104.789317	

SECTION DETAILS

MD	Inc	Azi	TVD	+N/-S	+E/-W	Dleg	TFace	VSect
0.00	0.00	0.00	0.00	0.00	0.00	0.00	0.00	0.00
850.00	0.00	0.00	850.00	0.00	0.00	0.00	0.00	0.00
1598.79	14.98	117.00	1590.29	-44.18	86.69	2.00	117.00	-14.28
6811.19	14.98	117.00	6625.66	-655.70	1286.80	0.00	0.00	-212.01
7778.29	90.10	0.52	7247.01	-87.00	1441.00	10.00	-115.68	376.18
8190.60	90.55	352.29	7244.68	324.13	1415.16	2.00	-86.81	757.71
8468.30	90.55	352.29	7242.01	599.31	1377.88	0.00	0.00	1006.72
8880.90	90.00	0.52	7240.01	1010.74	1352.02	2.00	93.81	1388.52
11980.90	90.00	0.52	7240.01	4110.61	1380.16	0.00	0.00	4336.13

WELLBORE TARGET DETAILS (MAP CO-ORDINATES AND LAT/LONG)

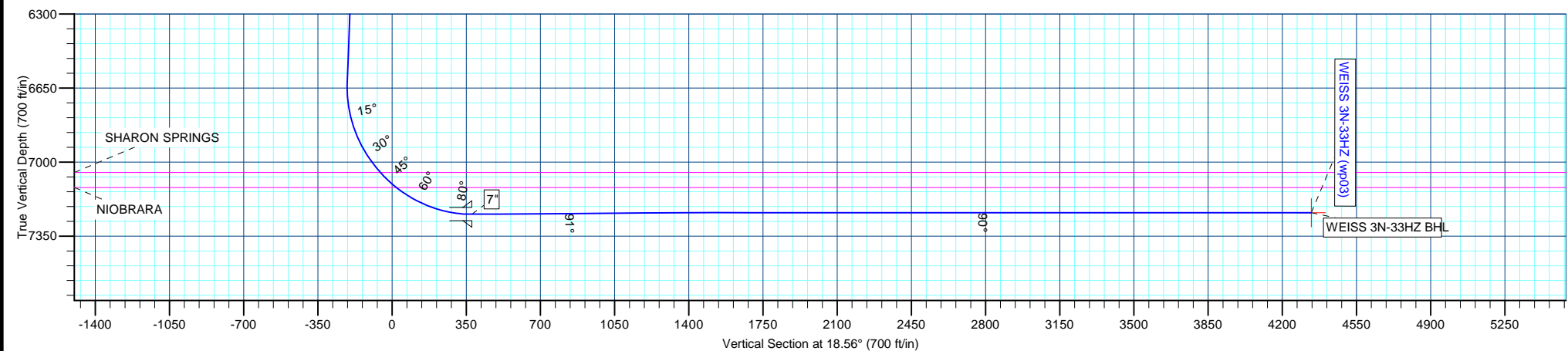
Name	TVD	+N/-S	+E/-W	Latitude	Longitude	Shape
WEISS 3N-33HZ BHL	7240.01	4110.61	1380.16	40.187442	-104.784377	Point

FORMATION TOP DETAILS

TVDPath	MDPath	Formation
3133.01	3195.74	PARKMAN
4385.01	4491.76	SUSSEX
7049.01	7278.70	SHARON SPRINGS
7121.01	7384.33	NIOBRARA

CASING DETAILS

TVD	MD	Name	Size
700.00	700.00	9 5/8"	9-5/8
7247.01	7778.29	7"	7



Anadarko Petroleum Corp

Planning Report

Database:	edmp	Local Co-ordinate Reference:	Well WEISS 3N-33HZ
Company:	US ROCKIES REGION PLANNING	TVD Reference:	17' RKB + 4914' GL @ 4931.01ft
Project:	COLORADO NORTHERN ZONE - 83	MD Reference:	17' RKB + 4914' GL @ 4931.01ft
Site:	WELD_WEISS PAD	North Reference:	True
Well:	WEISS 3N-33HZ	Survey Calculation Method:	Minimum Curvature
Wellbore:	WEISS 3N-33HZ		
Design:	WEISS 3N-33HZ (wp03)		

Project	COLORADO NORTHERN ZONE - 83		
Map System:	US State Plane 1983	System Datum:	Mean Sea Level
Geo Datum:	North American Datum 1983		
Map Zone:	Colorado Northern Zone		

Site		WELD_WEISS PAD			
Site Position:		Northing:	1,307,811.68 usft	Latitude:	40.176156
From:	Lat/Long	Easting:	3,198,507.98 usft	Longitude:	-104.789589
Position Uncertainty:	0.00 ft	Slot Radius:	0 "	Grid Convergence:	0.46 °

Well	WEISS 3N-33HZ					
Well Position	+N/-S	0.72 ft	Northing:	1,307,813.01 usft	Latitude:	40.176158
	+E/-W	76.01 ft	Easting:	3,198,583.98 usft	Longitude:	-104.789317
Position Uncertainty		0.00 ft	Wellhead Elevation:		Ground Level:	4,914.01 ft

Wellbore	WEISS 3N-33HZ				
Magnetics	Model Name	Sample Date	Declination (°)	Dip Angle (°)	Field Strength (nT)
	IGRF2010	9/13/2011	8.82	66.86	52,984

Design	WEISS 3N-33HZ (wp03)			
Audit Notes:				
Version:	Phase:	PLAN	Tie On Depth:	0.00
Vertical Section:	Depth From (TVD) (ft)	+N/-S (ft)	+E/-W (ft)	Direction (°)
	0.00	0.00	0.00	18.56

Plan Sections										
Measured Depth (ft)	Inclination (°)	Azimuth (°)	Vertical Depth (ft)	+N/-S (ft)	+E/-W (ft)	Dogleg Rate (°/100usft)	Build Rate (°/100usft)	Turn Rate (°/100usft)	TFO (°)	Target
0.00	0.00	0.00	0.00	0.00	0.00	0.00	0.00	0.00	0.00	
850.00	0.00	0.00	850.00	0.00	0.00	0.00	0.00	0.00	0.00	
1,598.79	14.98	117.00	1,590.29	-44.18	86.69	2.00	2.00	0.00	117.00	
6,811.19	14.98	117.00	6,625.66	-655.70	1,286.80	0.00	0.00	0.00	0.00	
7,778.29	90.10	0.52	7,247.01	-87.00	1,441.00	10.00	7.77	-12.04	-115.68	
8,190.60	90.55	352.29	7,244.68	324.13	1,415.16	2.00	0.11	-2.00	-86.81	
8,468.30	90.55	352.29	7,242.01	599.31	1,377.88	0.00	0.00	0.00	0.00	
8,880.90	90.00	0.52	7,240.01	1,010.74	1,352.02	2.00	-0.13	2.00	93.81	
11,980.90	90.00	0.52	7,240.01	4,110.61	1,380.16	0.00	0.00	0.00	0.00	WEISS 3N-33HZ BHL

Anadarko Petroleum Corp

Planning Report

Database:	edmp	Local Co-ordinate Reference:	Well WEISS 3N-33HZ
Company:	US ROCKIES REGION PLANNING	TVD Reference:	17' RKB + 4914' GL @ 4931.01ft
Project:	COLORADO NORTHERN ZONE - 83	MD Reference:	17' RKB + 4914' GL @ 4931.01ft
Site:	WELD_WEISS PAD	North Reference:	True
Well:	WEISS 3N-33HZ	Survey Calculation Method:	Minimum Curvature
Wellbore:	WEISS 3N-33HZ		
Design:	WEISS 3N-33HZ (wp03)		

Planned Survey									
Measured Depth (ft)	Inclination (°)	Azimuth (°)	Vertical Depth (ft)	+N/-S (ft)	+E/-W (ft)	Vertical Section (ft)	Dogleg Rate (°/100usft)	Build Rate (°/100usft)	Turn Rate (°/100usft)
0.00	0.00	0.00	0.00	0.00	0.00	0.00	0.00	0.00	0.00
100.00	0.00	0.00	100.00	0.00	0.00	0.00	0.00	0.00	0.00
200.00	0.00	0.00	200.00	0.00	0.00	0.00	0.00	0.00	0.00
300.00	0.00	0.00	300.00	0.00	0.00	0.00	0.00	0.00	0.00
400.00	0.00	0.00	400.00	0.00	0.00	0.00	0.00	0.00	0.00
500.00	0.00	0.00	500.00	0.00	0.00	0.00	0.00	0.00	0.00
600.00	0.00	0.00	600.00	0.00	0.00	0.00	0.00	0.00	0.00
700.00	0.00	0.00	700.00	0.00	0.00	0.00	0.00	0.00	0.00
9 5/8"									
800.00	0.00	0.00	800.00	0.00	0.00	0.00	0.00	0.00	0.00
850.00	0.00	0.00	850.00	0.00	0.00	0.00	0.00	0.00	0.00
Start Build 2.00									
900.00	1.00	117.00	900.00	-0.20	0.39	-0.06	2.00	2.00	0.00
1,000.00	3.00	117.00	999.93	-1.78	3.50	-0.58	2.00	2.00	0.00
1,100.00	5.00	117.00	1,099.68	-4.95	9.71	-1.60	2.00	2.00	0.00
1,200.00	7.00	117.00	1,199.13	-9.69	19.03	-3.13	2.00	2.00	0.00
1,300.00	9.00	117.00	1,298.15	-16.01	31.43	-5.18	2.00	2.00	0.00
1,400.00	11.00	117.00	1,396.63	-23.90	46.90	-7.73	2.00	2.00	0.00
1,500.00	13.00	117.00	1,494.44	-33.34	65.42	-10.78	2.00	2.00	0.00
1,557.02	14.14	117.00	1,549.87	-39.41	77.34	-12.74	2.00	2.00	0.00
Start 5231.83 hold at 1557.02 MD									
1,598.79	14.98	117.00	1,590.29	-44.18	86.69	-14.28	2.00	2.00	0.00
1,600.00	14.98	117.00	1,591.46	-44.32	86.97	-14.33	0.00	0.00	0.00
1,700.00	14.98	117.00	1,688.07	-56.05	110.00	-18.12	0.00	0.00	0.00
1,800.00	14.98	117.00	1,784.67	-67.78	133.02	-21.92	0.00	0.00	0.00
1,900.00	14.98	117.00	1,881.27	-79.51	156.05	-25.71	0.00	0.00	0.00
2,000.00	14.98	117.00	1,977.88	-91.25	179.07	-29.50	0.00	0.00	0.00
2,100.00	14.98	117.00	2,074.48	-102.98	202.09	-33.30	0.00	0.00	0.00
2,200.00	14.98	117.00	2,171.08	-114.71	225.12	-37.09	0.00	0.00	0.00
2,300.00	14.98	117.00	2,267.69	-126.44	248.14	-40.88	0.00	0.00	0.00
2,400.00	14.98	117.00	2,364.29	-138.17	271.17	-44.68	0.00	0.00	0.00
2,500.00	14.98	117.00	2,460.89	-149.91	294.19	-48.47	0.00	0.00	0.00
2,600.00	14.98	117.00	2,557.50	-161.64	317.22	-52.26	0.00	0.00	0.00
2,700.00	14.98	117.00	2,654.10	-173.37	340.24	-56.06	0.00	0.00	0.00
2,800.00	14.98	117.00	2,750.71	-185.10	363.26	-59.85	0.00	0.00	0.00
2,900.00	14.98	117.00	2,847.31	-196.83	386.29	-63.64	0.00	0.00	0.00
3,000.00	14.98	117.00	2,943.91	-208.57	409.31	-67.44	0.00	0.00	0.00
3,100.00	14.98	117.00	3,040.52	-220.30	432.34	-71.23	0.00	0.00	0.00
3,195.74	14.98	117.00	3,133.01	-231.53	454.38	-74.86	0.00	0.00	0.00
PARKMAN									
3,200.00	14.98	117.00	3,137.12	-232.03	455.36	-75.03	0.00	0.00	0.00
3,300.00	14.98	117.00	3,233.72	-243.76	478.38	-78.82	0.00	0.00	0.00
3,400.00	14.98	117.00	3,330.33	-255.49	501.41	-82.61	0.00	0.00	0.00
3,500.00	14.98	117.00	3,426.93	-267.23	524.43	-86.41	0.00	0.00	0.00
3,600.00	14.98	117.00	3,523.53	-278.96	547.46	-90.20	0.00	0.00	0.00
3,700.00	14.98	117.00	3,620.14	-290.69	570.48	-93.99	0.00	0.00	0.00
3,800.00	14.98	117.00	3,716.74	-302.42	593.50	-97.79	0.00	0.00	0.00
3,900.00	14.98	117.00	3,813.34	-314.15	616.53	-101.58	0.00	0.00	0.00
4,000.00	14.98	117.00	3,909.95	-325.89	639.55	-105.37	0.00	0.00	0.00
4,100.00	14.98	117.00	4,006.55	-337.62	662.58	-109.17	0.00	0.00	0.00
4,200.00	14.98	117.00	4,103.16	-349.35	685.60	-112.96	0.00	0.00	0.00
4,300.00	14.98	117.00	4,199.76	-361.08	708.63	-116.75	0.00	0.00	0.00
4,400.00	14.98	117.00	4,296.36	-372.81	731.65	-120.55	0.00	0.00	0.00
4,491.76	14.98	117.00	4,385.01	-383.58	752.78	-124.03	0.00	0.00	0.00

Anadarko Petroleum Corp

Planning Report

Database:	edmp	Local Co-ordinate Reference:	Well WEISS 3N-33HZ
Company:	US ROCKIES REGION PLANNING	TVD Reference:	17' RKB + 4914' GL @ 4931.01ft
Project:	COLORADO NORTHERN ZONE - 83	MD Reference:	17' RKB + 4914' GL @ 4931.01ft
Site:	WELD_WEISS PAD	North Reference:	True
Well:	WEISS 3N-33HZ	Survey Calculation Method:	Minimum Curvature
Wellbore:	WEISS 3N-33HZ		
Design:	WEISS 3N-33HZ (wp03)		

Planned Survey									
Measured Depth (ft)	Inclination (°)	Azimuth (°)	Vertical Depth (ft)	+N/-S (ft)	+E/-W (ft)	Vertical Section (ft)	Dogleg Rate (°/100usft)	Build Rate (°/100usft)	Turn Rate (°/100usft)
SUSSEX									
4,500.00	14.98	117.00	4,392.97	-384.55	754.67	-124.34	0.00	0.00	0.00
4,600.00	14.98	117.00	4,489.57	-396.28	777.70	-128.13	0.00	0.00	0.00
4,700.00	14.98	117.00	4,586.17	-408.01	800.72	-131.93	0.00	0.00	0.00
4,800.00	14.98	117.00	4,682.78	-419.74	823.75	-135.72	0.00	0.00	0.00
4,900.00	14.98	117.00	4,779.38	-431.47	846.77	-139.51	0.00	0.00	0.00
5,000.00	14.98	117.00	4,875.98	-443.21	869.79	-143.31	0.00	0.00	0.00
5,100.00	14.98	117.00	4,972.59	-454.94	892.82	-147.10	0.00	0.00	0.00
5,200.00	14.98	117.00	5,069.19	-466.67	915.84	-150.89	0.00	0.00	0.00
5,300.00	14.98	117.00	5,165.79	-478.40	938.87	-154.69	0.00	0.00	0.00
5,400.00	14.98	117.00	5,262.40	-490.13	961.89	-158.48	0.00	0.00	0.00
5,500.00	14.98	117.00	5,359.00	-501.87	984.91	-162.27	0.00	0.00	0.00
5,600.00	14.98	117.00	5,455.61	-513.60	1,007.94	-166.07	0.00	0.00	0.00
5,700.00	14.98	117.00	5,552.21	-525.33	1,030.96	-169.86	0.00	0.00	0.00
5,800.00	14.98	117.00	5,648.81	-537.06	1,053.99	-173.65	0.00	0.00	0.00
5,900.00	14.98	117.00	5,745.42	-548.79	1,077.01	-177.45	0.00	0.00	0.00
6,000.00	14.98	117.00	5,842.02	-560.53	1,100.04	-181.24	0.00	0.00	0.00
6,100.00	14.98	117.00	5,938.62	-572.26	1,123.06	-185.04	0.00	0.00	0.00
6,200.00	14.98	117.00	6,035.23	-583.99	1,146.08	-188.83	0.00	0.00	0.00
6,300.00	14.98	117.00	6,131.83	-595.72	1,169.11	-192.62	0.00	0.00	0.00
6,400.00	14.98	117.00	6,228.43	-607.45	1,192.13	-196.42	0.00	0.00	0.00
6,500.00	14.98	117.00	6,325.04	-619.19	1,215.16	-200.21	0.00	0.00	0.00
6,600.00	14.98	117.00	6,421.64	-630.92	1,238.18	-204.00	0.00	0.00	0.00
6,700.00	14.98	117.00	6,518.24	-642.65	1,261.20	-207.80	0.00	0.00	0.00
6,788.85	14.98	117.00	6,604.07	-653.07	1,281.66	-211.17	0.00	0.00	0.00
Start DLS 10.00 TFO -117.45									
6,800.00	14.98	117.00	6,614.85	-654.38	1,284.23	-211.59	0.00	0.00	0.00
6,811.19	14.98	117.00	6,625.66	-655.70	1,286.80	-212.01	0.00	0.00	0.00
6,900.00	13.65	80.89	6,711.88	-659.25	1,307.42	-208.82	10.00	-1.49	-40.67
7,000.00	18.14	47.50	6,808.22	-646.83	1,330.61	-189.67	10.00	4.49	-33.38
7,100.00	25.85	30.17	6,900.97	-617.40	1,353.10	-154.60	10.00	7.70	-17.33
7,200.00	34.68	20.79	6,987.30	-571.83	1,374.21	-104.69	10.00	8.84	-9.38
7,278.70	41.97	15.98	7,049.01	-525.53	1,389.43	-55.95	10.00	9.26	-6.11
SHARON SPRINGS									
7,300.00	43.98	14.91	7,064.60	-511.53	1,393.29	-41.45	10.00	9.40	-5.01
7,384.33	51.98	11.33	7,121.01	-450.56	1,407.38	20.83	10.00	9.49	-4.24
NIORARA									
7,400.00	53.48	10.76	7,130.50	-438.32	1,409.77	33.19	10.00	9.56	-3.68
7,500.00	63.09	7.52	7,183.02	-354.43	1,423.14	116.98	10.00	9.62	-3.23
7,600.00	72.77	4.80	7,220.55	-262.40	1,433.00	207.36	10.00	9.68	-2.72
7,700.00	82.48	2.35	7,241.95	-165.04	1,439.05	301.58	10.00	9.71	-2.45
7,756.06	87.93	1.04	7,246.63	-109.22	1,440.70	355.03	10.00	9.72	-2.35
Start DLS 1.00 TFO 90.00									
7,757.51	88.07	1.00	7,246.68	-107.77	1,440.72	356.40	10.00	9.72	-2.33
Start 4196.36 hold at 7757.51 MD									
7,778.29	90.10	0.52	7,247.01	-87.00	1,441.00	376.19	10.00	9.72	-2.33
7"									
7,800.00	90.12	0.09	7,246.97	-65.29	1,441.11	396.80	2.00	0.11	-2.00
7,900.00	90.23	358.09	7,246.67	34.69	1,439.52	491.08	2.00	0.11	-2.00
8,000.00	90.34	356.09	7,246.17	134.56	1,434.45	584.13	2.00	0.11	-2.00
8,100.00	90.45	354.10	7,245.47	234.18	1,425.90	675.86	2.00	0.11	-2.00
8,190.60	90.55	352.29	7,244.68	324.13	1,415.16	757.71	2.00	0.11	-2.00
8,200.00	90.55	352.29	7,244.59	333.45	1,413.90	766.14	0.00	0.00	0.00

Anadarko Petroleum Corp

Planning Report

Database:	edmp	Local Co-ordinate Reference:	Well WEISS 3N-33HZ
Company:	US ROCKIES REGION PLANNING	TVD Reference:	17' RKB + 4914' GL @ 4931.01ft
Project:	COLORADO NORTHERN ZONE - 83	MD Reference:	17' RKB + 4914' GL @ 4931.01ft
Site:	WELD_WEISS PAD	North Reference:	True
Well:	WEISS 3N-33HZ	Survey Calculation Method:	Minimum Curvature
Wellbore:	WEISS 3N-33HZ		
Design:	WEISS 3N-33HZ (wp03)		

Planned Survey										
Measured Depth (ft)	Inclination (°)	Azimuth (°)	Vertical Depth (ft)	+N/-S (ft)	+E/-W (ft)	Vertical Section (ft)	Dogleg Rate (°/100usft)	Build Rate (°/100usft)	Turn Rate (°/100usft)	
8,300.00	90.55	352.29	7,243.63	432.54	1,400.47	855.81	0.00	0.00	0.00	
8,400.00	90.55	352.29	7,242.66	531.63	1,387.05	945.47	0.00	0.00	0.00	
8,468.30	90.55	352.29	7,242.01	599.31	1,377.88	1,006.72	0.00	0.00	0.00	
8,500.00	90.51	352.92	7,241.71	630.75	1,373.80	1,035.22	2.00	-0.13	2.00	
8,600.00	90.38	354.91	7,240.94	730.18	1,363.21	1,126.10	2.00	-0.13	2.00	
8,700.00	90.24	356.91	7,240.40	829.91	1,356.08	1,218.38	2.00	-0.13	2.00	
8,800.00	90.11	358.91	7,240.09	929.84	1,352.43	1,311.95	2.00	-0.13	2.00	
8,880.90	90.00	0.52	7,240.01	1,010.74	1,352.02	1,388.52	2.00	-0.13	2.00	
8,900.00	90.00	0.52	7,240.01	1,029.84	1,352.20	1,406.67	0.00	0.00	0.00	
9,000.00	90.00	0.52	7,240.01	1,129.83	1,353.10	1,501.76	0.00	0.00	0.00	
9,100.00	90.00	0.52	7,240.01	1,229.83	1,354.01	1,596.84	0.00	0.00	0.00	
9,200.00	90.00	0.52	7,240.01	1,329.83	1,354.92	1,691.93	0.00	0.00	0.00	
9,300.00	90.00	0.52	7,240.01	1,429.82	1,355.83	1,787.01	0.00	0.00	0.00	
9,400.00	90.00	0.52	7,240.01	1,529.82	1,356.73	1,882.09	0.00	0.00	0.00	
9,500.00	90.00	0.52	7,240.01	1,629.81	1,357.64	1,977.18	0.00	0.00	0.00	
9,600.00	90.00	0.52	7,240.01	1,729.81	1,358.55	2,072.26	0.00	0.00	0.00	
9,700.00	90.00	0.52	7,240.01	1,829.81	1,359.46	2,167.35	0.00	0.00	0.00	
9,800.00	90.00	0.52	7,240.01	1,929.80	1,360.36	2,262.43	0.00	0.00	0.00	
9,900.00	90.00	0.52	7,240.01	2,029.80	1,361.27	2,357.52	0.00	0.00	0.00	
10,000.00	90.00	0.52	7,240.01	2,129.79	1,362.18	2,452.60	0.00	0.00	0.00	
10,100.00	90.00	0.52	7,240.01	2,229.79	1,363.09	2,547.68	0.00	0.00	0.00	
10,200.00	90.00	0.52	7,240.01	2,329.78	1,363.99	2,642.77	0.00	0.00	0.00	
10,300.00	90.00	0.52	7,240.01	2,429.78	1,364.90	2,737.85	0.00	0.00	0.00	
10,400.00	90.00	0.52	7,240.01	2,529.78	1,365.81	2,832.94	0.00	0.00	0.00	
10,500.00	90.00	0.52	7,240.01	2,629.77	1,366.72	2,928.02	0.00	0.00	0.00	
10,600.00	90.00	0.52	7,240.01	2,729.77	1,367.63	3,023.10	0.00	0.00	0.00	
10,700.00	90.00	0.52	7,240.01	2,829.76	1,368.53	3,118.19	0.00	0.00	0.00	
10,800.00	90.00	0.52	7,240.01	2,929.76	1,369.44	3,213.27	0.00	0.00	0.00	
10,900.00	90.00	0.52	7,240.01	3,029.76	1,370.35	3,308.36	0.00	0.00	0.00	
11,000.00	90.00	0.52	7,240.01	3,129.75	1,371.26	3,403.44	0.00	0.00	0.00	
11,100.00	90.00	0.52	7,240.01	3,229.75	1,372.16	3,498.53	0.00	0.00	0.00	
11,200.00	90.00	0.52	7,240.01	3,329.74	1,373.07	3,593.61	0.00	0.00	0.00	
11,300.00	90.00	0.52	7,240.01	3,429.74	1,373.98	3,688.69	0.00	0.00	0.00	
11,400.00	90.00	0.52	7,240.01	3,529.74	1,374.89	3,783.78	0.00	0.00	0.00	
11,500.00	90.00	0.52	7,240.01	3,629.73	1,375.79	3,878.86	0.00	0.00	0.00	
11,600.00	90.00	0.52	7,240.01	3,729.73	1,376.70	3,973.95	0.00	0.00	0.00	
11,700.00	90.00	0.52	7,240.01	3,829.72	1,377.61	4,069.03	0.00	0.00	0.00	
11,800.00	90.00	0.52	7,240.01	3,929.72	1,378.52	4,164.12	0.00	0.00	0.00	
11,900.00	90.00	0.52	7,240.01	4,029.71	1,379.42	4,259.20	0.00	0.00	0.00	
11,953.87	90.00	0.52	7,240.01	4,083.58	1,379.91	4,310.42	0.00	0.00	0.00	
TD at 11953.87										
11,980.90	90.00	0.52	7,240.01	4,110.61	1,380.16	4,336.13	0.00	0.00	0.00	
WEISS 3N-33HZ BHL										

Design Targets										
Target Name	Dip Angle (°)	Dip Dir. (°)	TVD (ft)	+N/-S (ft)	+E/-W (ft)	Northing (usft)	Easting (usft)	Latitude	Longitude	
- hit/miss target										
- Shape										
WEISS 3N-33HZ BHL	0.00	0.00	7,240.01	4,110.61	1,380.16	1,311,934.54	3,199,931.14	40.187442	-104.784377	
- plan hits target center										
- Point										

Anadarko Petroleum Corp

Planning Report

Database:	edmp	Local Co-ordinate Reference:	Well WEISS 3N-33HZ
Company:	US ROCKIES REGION PLANNING	TVD Reference:	17' RKB + 4914' GL @ 4931.01ft
Project:	COLORADO NORTHERN ZONE - 83	MD Reference:	17' RKB + 4914' GL @ 4931.01ft
Site:	WELD_WEISS PAD	North Reference:	True
Well:	WEISS 3N-33HZ	Survey Calculation Method:	Minimum Curvature
Wellbore:	WEISS 3N-33HZ		
Design:	WEISS 3N-33HZ (wp03)		

Casing Points					
Measured Depth (ft)	Vertical Depth (ft)	Name	Casing Diameter (")	Hole Diameter (")	
700.00	700.00	9 5/8"	9-5/8	12-1/4	
7,778.29	7,247.01	7"	7	8-3/4	

Formations					
Measured Depth (ft)	Vertical Depth (ft)	Name	Lithology	Dip (°)	Dip Direction (°)
3,195.74	3,133.01	PARKMAN		0.00	
4,491.76	4,385.01	SUSSEX		0.00	
7,278.70	7,049.01	SHARON SPRINGS		0.00	
7,384.33	7,121.01	NIOBRARA		0.00	

Plan Annotations					
Measured Depth (ft)	Vertical Depth (ft)	Local Coordinates			
		+N/-S (ft)	+E/-W (ft)	Comment	
850.00	850.00	0.00	0.00	Start Build 2.00	
1,557.02	1,549.87	-39.41	77.34	Start 5231.83 hold at 1557.02 MD	
6,788.85	6,604.07	-653.07	1,281.66	Start DLS 10.00 TFO -117.45	
7,756.06	7,246.63	-109.22	1,440.70	Start DLS 1.00 TFO 90.00	
7,757.51	7,246.68	-107.77	1,440.72	Start 4196.36 hold at 7757.51 MD	
11,953.87	7,240.02	4,088.12	1,380.04	TD at 11953.87	