



Weatherford[®]

Drilling Services

PROPOSAL



DEJOUR ENERGY INC.
RESOURCEFUL. ENTERPRISING

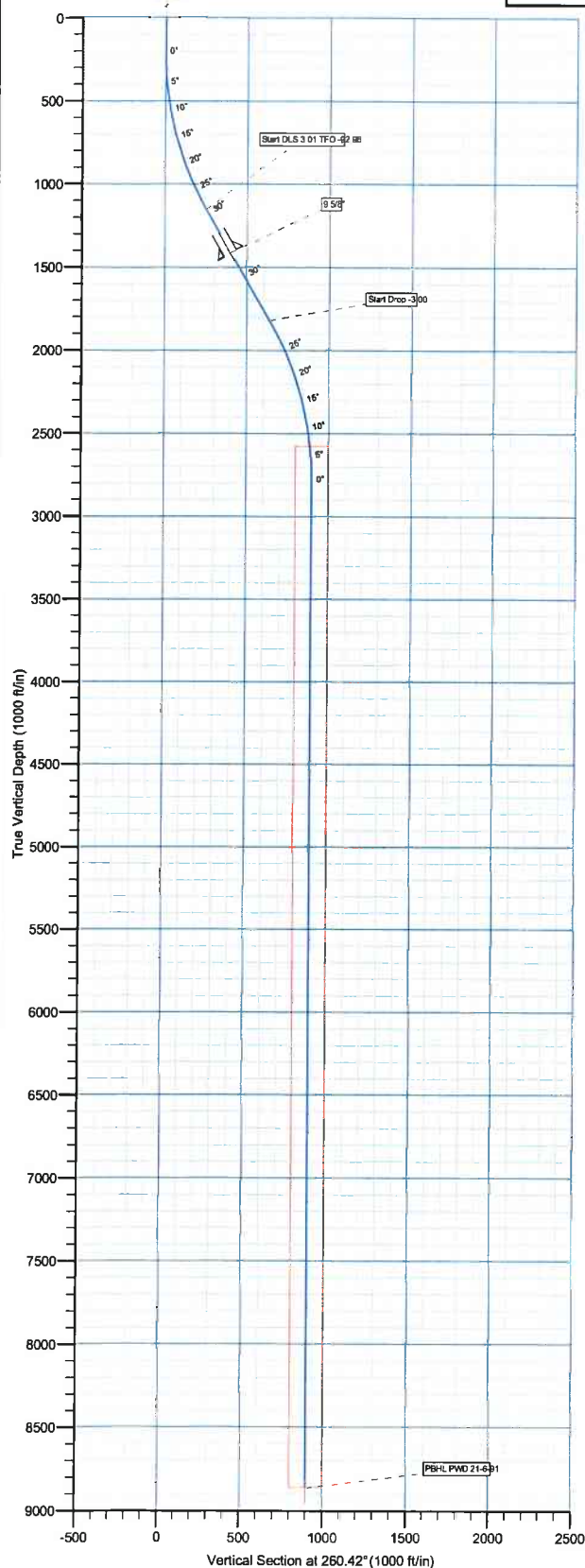
DEJOUR ENERGY INC.

21A PAD
PWD 21-6-91
GARFIELD COUNTY, COLORADO

PLAN 1

SEPTEMBER 8, 2011

Weatherford International Ltd.
410 17th Street, Suite 400
Denver, Colorado 80202
+1.303.825.6558 Main
+1.303.825.2927 Fax
www.weatherford.com



SECTION DETAILS

Sec	MD	Inc	Azi	TVD	+N-S	+E-W	DLeg	TFace	VSec	Target
1	0.00	0.00	0.00	0.00	0.00	0.00	0.00	0.00	0.00	
2	200.00	0.00	0.00	200.00	0.00	0.00	0.00	0.00	0.00	
3	1200.00	30.00	265.00	1154.93	-22.30	-254.90	3.00	265.00	255.06	
4	1311.04	30.00	258.30	1251.13	-30.35	-309.75	3.01	-92.96	310.48	
5	1973.98	30.00	258.30	1825.26	-97.54	-634.30	0.00	0.00	641.69	
6	2969.22	0.00	0.00	2775.66	-149.16	-883.64	3.01	180.00	896.14	
7	9054.56	0.00	0.00	8861.00	-149.16	-883.64	0.00	0.00	896.14	PBHL PWD 21-6-91

WELLBORE TARGET DETAILS (MAP CO-ORDINATES AND LAT/LONG)

Name	TVD	+N-S	+E-W	Latitude	Longitude	Shape
PBHL PWD 21-6-91	8861.00	-149.16	-883.64	39°30' 29.272 N	107°33' 33.103 W	Circle (Radius: 100.00)

WELL DETAILS: PWD 21-6-91

+N-S	+E-W	Northing	Ground Level:	Latitude	Longitude	Slot
0.00	0.00	1616679.11	2419930.83	39°30' 30.746 N	107°33' 21.828 W	

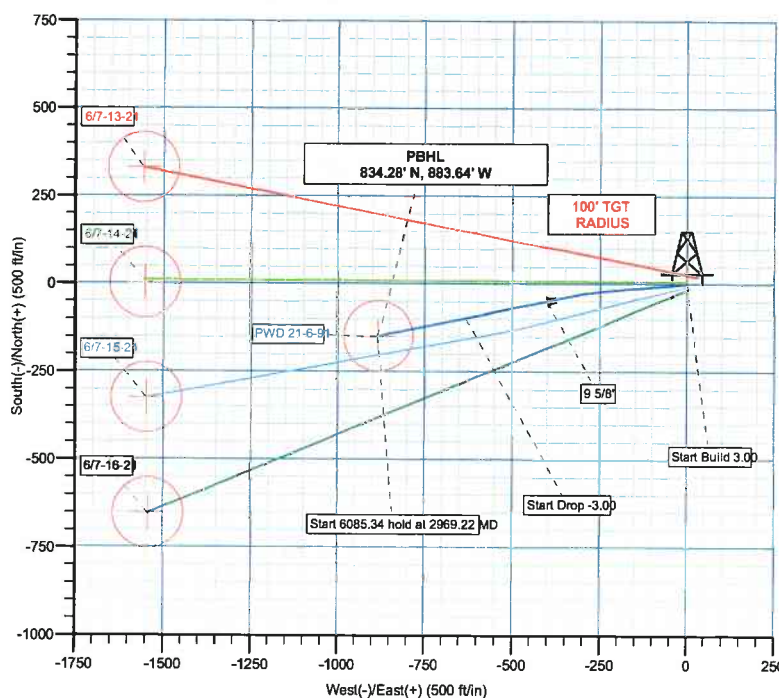
PROJECT DETAILS: GARFIELD COUNTY CO

Geodetic System: US State Plane 1983
Datum: North American Datum 1983
Ellipsoid: GRS 1980
Zone: Colorado Central Zone
System Datum: Mean Sea Level



Azimuths to True North
Magnetic North: 10.12°

Magnetic Field
Strength: 52259.9nT
Dip Angle: 65.85°
Date: 9/8/2011
Model: BGGM2010



Plan: Design #1 (PWD 21-6-91/PWD 21-6-91)

Created By: TIFFANY CHIU Date: 13:51, September 08 2011



DEJOUR ENERGY COMPANY

GARFIELD COUNTY CO

PAD 21A

PWD 21-6-91

PWD 21-6-91

Plan: Design #1

Standard Planning Report

08 September, 2011



Weatherford®

Database:	EDM 2003.21 Single User Db	Local Co-ordinate Reference:	Well PWD 21-6-91
Company:	DEJOUR ENERGY COMPANY	TVD Reference:	WELL @ 7028.00ft (Original Well Elev)
Project:	GARFIELD COUNTY CO	MD Reference:	WELL @ 7028.00ft (Original Well Elev)
Site:	PAD 21A	North Reference:	True
Well:	PWD 21-6-91	Survey Calculation Method:	Minimum Curvature
Wellbore:	PWD 21-6-91		
Design:	Design #1		

Project	GARFIELD COUNTY CO		
Map System:	US State Plane 1983	System Datum:	Mean Sea Level
Geo Datum:	North American Datum 1983		
Map Zone:	Colorado Central Zone		

Site		PAD 21A			
Site Position:		Northing:	1,616,698.33ft	Latitude:	39° 30' 30.944 N
From:	Lat/Long	Easting:	2,419,965.91ft	Longitude:	107° 33' 21.387 W
Position Uncertainty:	0.00 ft	Slot Radius:	"	Grid Convergence:	-1.30 °

Well	PWD 21-6-91					
Well Position	+N/-S	-20.01ft	Northing:	1,616,679.11ft	Latitude:	39° 30' 30.746 N
	+E/-W	-34.63 ft	Easting:	2,419,930.83 ft	Longitude:	107° 33' 21.828 W
Position Uncertainty	0.00 ft		Wellhead Elevation:	ft	Ground Level:	7,008.00 ft

Wellbore	PWD 21-6-91				
Magnetics	Model Name	Sample Date	Declination (°)	Dip Angle (°)	Field Strength (nT)
	BGGM2010	9/8/2011	10.12	65.85	52,260

Design	Design #1			
Audit Notes:				
Version:	Phase:	PLAN	Tie On Depth:	0.00
Vertical Section:	Depth From (TVD)	+N/-S (ft)	+E/-W (ft)	Direction (°)
	0.00	0.00	0.00	260.42

Plan Sections										
Measured Depth (ft)	Inclination (°)	Azimuth (°)	Vertical Depth (ft)	+N/-S (ft)	+E/-W (ft)	Dogleg Rate (°/100ft)	Build Rate (°/100ft)	Turn Rate (°/100ft)	TFO (°)	Target
0.00	0.00	0.00	0.00	0.00	0.00	0.00	0.00	0.00	0.00	
200.00	0.00	0.00	200.00	0.00	0.00	0.00	0.00	0.00	0.00	
1,200.00	30.00	265.00	1,154.93	-22.30	-254.90	3.00	3.00	0.00	265.00	
1,311.04	30.00	258.30	1,251.13	-30.35	-309.75	3.01	0.00	-6.03	-92.96	
1,973.98	30.00	258.30	1,825.26	-97.54	-634.30	0.00	0.00	0.00	0.00	
2,969.22	0.00	0.00	2,775.66	-149.16	-883.64	3.01	-3.01	0.00	180.00	
9,054.56	0.00	0.00	8,861.00	-149.16	-883.64	0.00	0.00	0.00	0.00	PBHL PWD 21-6-9



Database: EDM 2003.21 Single User Db
Company: DEJOUR ENERGY COMPANY
Project: GARFIELD COUNTY CO
Site: PAD 21A
Well: PWD 21-6-91
Wellbore: PWD 21-6-91
Design: Design #1

Local Co-ordinate Reference: Well PWD 21-6-91
TVD Reference: WELL @ 7028.00ft (Original Well Elev)
MD Reference: WELL @ 7028.00ft (Original Well Elev)
North Reference: True
Survey Calculation Method: Minimum Curvature

Planned Survey

Measured Depth (ft)	Inclination (°)	Azimuth (°)	Vertical Depth (ft)	+N/-S (ft)	+E/-W (ft)	Vertical Section (ft)	Dogleg Rate (°/100ft)	Build Rate (°/100ft)	Turn Rate (°/100ft)
0.00	0.00	0.00	0.00	0.00	0.00	0.00	0.00	0.00	0.00
100.00	0.00	0.00	100.00	0.00	0.00	0.00	0.00	0.00	0.00
Start Build 3.00									
200.00	0.00	0.00	200.00	0.00	0.00	0.00	0.00	0.00	0.00
300.00	3.00	265.00	299.95	-0.23	-2.61	2.61	3.00	3.00	0.00
400.00	6.00	265.00	399.63	-0.91	-10.42	10.43	3.00	3.00	0.00
500.00	9.00	265.00	498.77	-2.05	-23.42	23.44	3.00	3.00	0.00
600.00	12.00	265.00	597.08	-3.64	-41.58	41.60	3.00	3.00	0.00
700.00	15.00	265.00	694.31	-5.67	-64.83	64.87	3.00	3.00	0.00
800.00	18.00	265.00	790.18	-8.15	-93.12	93.18	3.00	3.00	0.00
900.00	21.00	265.00	884.43	-11.06	-126.37	126.45	3.00	3.00	0.00
1,000.00	24.00	265.00	976.81	-14.39	-164.49	164.59	3.00	3.00	0.00
1,100.00	27.00	265.00	1,067.06	-18.14	-207.37	207.50	3.00	3.00	0.00
Start DLS 3.01 TFO -92.96									
1,200.00	30.00	265.00	1,154.93	-22.30	-254.90	255.06	3.00	3.00	0.00
1,300.00	29.98	258.97	1,241.56	-29.26	-304.34	304.96	3.01	-0.02	-6.03
Start 662.93 hold at 1311.04 MD									
1,311.04	30.00	258.30	1,251.13	-30.35	-309.75	310.48	3.01	0.13	-6.02
1,400.00	30.00	258.30	1,328.17	-39.37	-353.30	354.93	0.00	0.00	0.00
9 5/8"									
1,500.00	30.00	258.30	1,414.77	-49.50	-402.26	404.89	0.00	0.00	0.00
1,600.00	30.00	258.30	1,501.38	-59.64	-451.21	454.85	0.00	0.00	0.00
1,700.00	30.00	258.30	1,587.98	-69.77	-500.17	504.81	0.00	0.00	0.00
1,800.00	30.00	258.30	1,674.59	-79.91	-549.13	554.77	0.00	0.00	0.00
1,900.00	30.00	258.30	1,761.19	-90.04	-598.08	604.73	0.00	0.00	0.00
Start Drop -3.0000									
1,968.80	30.00	258.30	1,820.78	-97.02	-631.77	639.10	0.00	0.00	0.00
Start Drop -3.01									
1,973.98	30.00	258.30	1,825.26	-97.54	-634.30	641.69	0.00	0.00	0.00
2,000.00	29.21	258.30	1,847.89	-100.15	-646.89	654.54	3.01	-3.01	0.00
2,100.00	26.20	258.30	1,936.41	-109.57	-692.41	700.99	3.01	-3.01	0.00
2,200.00	23.18	258.30	2,027.26	-118.04	-733.31	742.73	3.01	-3.01	0.00
2,300.00	20.17	258.30	2,120.18	-125.53	-769.48	779.64	3.01	-3.01	0.00
2,400.00	17.16	258.30	2,214.91	-132.02	-800.81	811.61	3.01	-3.01	0.00
2,500.00	14.14	258.30	2,311.19	-137.48	-827.22	838.57	3.01	-3.01	0.00
2,600.00	11.13	258.30	2,408.76	-141.92	-848.64	860.42	3.01	-3.01	0.00
2,700.00	8.11	258.30	2,507.34	-145.31	-865.01	877.12	3.01	-3.01	0.00
2,800.00	5.10	258.30	2,606.66	-147.64	-876.27	888.62	3.01	-3.01	0.00
2,900.00	2.09	258.30	2,706.45	-148.91	-882.41	894.88	3.01	-3.01	0.00
Start 6085.34 hold at 2969.22 MD									
2,969.22	0.00	0.00	2,775.66	-149.16	-883.64	896.14	3.01	-3.01	0.00
3,000.00	0.00	0.00	2,806.44	-149.16	-883.64	896.14	0.00	0.00	0.00
3,100.00	0.00	0.00	2,906.44	-149.16	-883.64	896.14	0.00	0.00	0.00
3,200.00	0.00	0.00	3,006.44	-149.16	-883.64	896.14	0.00	0.00	0.00
3,300.00	0.00	0.00	3,106.44	-149.16	-883.64	896.14	0.00	0.00	0.00
3,400.00	0.00	0.00	3,206.44	-149.16	-883.64	896.14	0.00	0.00	0.00
3,500.00	0.00	0.00	3,306.44	-149.16	-883.64	896.14	0.00	0.00	0.00
3,600.00	0.00	0.00	3,406.44	-149.16	-883.64	896.14	0.00	0.00	0.00
3,700.00	0.00	0.00	3,506.44	-149.16	-883.64	896.14	0.00	0.00	0.00
3,800.00	0.00	0.00	3,606.44	-149.16	-883.64	896.14	0.00	0.00	0.00
3,900.00	0.00	0.00	3,706.44	-149.16	-883.64	896.14	0.00	0.00	0.00
4,000.00	0.00	0.00	3,806.44	-149.16	-883.64	896.14	0.00	0.00	0.00
4,100.00	0.00	0.00	3,906.44	-149.16	-883.64	896.14	0.00	0.00	0.00
4,200.00	0.00	0.00	4,006.44	-149.16	-883.64	896.14	0.00	0.00	0.00
4,300.00	0.00	0.00	4,106.44	-149.16	-883.64	896.14	0.00	0.00	0.00
4,400.00	0.00	0.00	4,206.44	-149.16	-883.64	896.14	0.00	0.00	0.00
4,500.00	0.00	0.00	4,306.44	-149.16	-883.64	896.14	0.00	0.00	0.00
4,600.00	0.00	0.00	4,406.44	-149.16	-883.64	896.14	0.00	0.00	0.00



Database: EDM 2003.21 Single User Db
Company: DEJOUR ENERGY COMPANY
Project: GARFIELD COUNTY CO
Site: PAD 21A
Well: PWD 21-6-91
Wellbore: PWD 21-6-91
Design: Design #1

Local Co-ordinate Reference: Well PWD 21-6-91
TVD Reference: WELL @ 7028.00ft (Original Well Elev)
MD Reference: WELL @ 7028.00ft (Original Well Elev)
North Reference: True
Survey Calculation Method: Minimum Curvature

Planned Survey

Measured Depth (ft)	Inclination (°)	Azimuth (°)	Vertical Depth (ft)	+N/-S (ft)	+E/-W (ft)	Vertical Section (ft)	Dogleg Rate (°/100ft)	Build Rate (°/100ft)	Turn Rate (°/100ft)
4,700.00	0.00	0.00	4,506.44	-149.16	-883.64	896.14	0.00	0.00	0.00
4,800.00	0.00	0.00	4,606.44	-149.16	-883.64	896.14	0.00	0.00	0.00
4,900.00	0.00	0.00	4,706.44	-149.16	-883.64	896.14	0.00	0.00	0.00
5,000.00	0.00	0.00	4,806.44	-149.16	-883.64	896.14	0.00	0.00	0.00
5,100.00	0.00	0.00	4,906.44	-149.16	-883.64	896.14	0.00	0.00	0.00
5,200.00	0.00	0.00	5,006.44	-149.16	-883.64	896.14	0.00	0.00	0.00
5,300.00	0.00	0.00	5,106.44	-149.16	-883.64	896.14	0.00	0.00	0.00
5,400.00	0.00	0.00	5,206.44	-149.16	-883.64	896.14	0.00	0.00	0.00
5,500.00	0.00	0.00	5,306.44	-149.16	-883.64	896.14	0.00	0.00	0.00
5,600.00	0.00	0.00	5,406.44	-149.16	-883.64	896.14	0.00	0.00	0.00
5,700.00	0.00	0.00	5,506.44	-149.16	-883.64	896.14	0.00	0.00	0.00
5,800.00	0.00	0.00	5,606.44	-149.16	-883.64	896.14	0.00	0.00	0.00
5,900.00	0.00	0.00	5,706.44	-149.16	-883.64	896.14	0.00	0.00	0.00
6,000.00	0.00	0.00	5,806.44	-149.16	-883.64	896.14	0.00	0.00	0.00
6,100.00	0.00	0.00	5,906.44	-149.16	-883.64	896.14	0.00	0.00	0.00
6,200.00	0.00	0.00	6,006.44	-149.16	-883.64	896.14	0.00	0.00	0.00
6,300.00	0.00	0.00	6,106.44	-149.16	-883.64	896.14	0.00	0.00	0.00
6,400.00	0.00	0.00	6,206.44	-149.16	-883.64	896.14	0.00	0.00	0.00
6,500.00	0.00	0.00	6,306.44	-149.16	-883.64	896.14	0.00	0.00	0.00
6,600.00	0.00	0.00	6,406.44	-149.16	-883.64	896.14	0.00	0.00	0.00
6,700.00	0.00	0.00	6,506.44	-149.16	-883.64	896.14	0.00	0.00	0.00
6,800.00	0.00	0.00	6,606.44	-149.16	-883.64	896.14	0.00	0.00	0.00
6,900.00	0.00	0.00	6,706.44	-149.16	-883.64	896.14	0.00	0.00	0.00
7,000.00	0.00	0.00	6,806.44	-149.16	-883.64	896.14	0.00	0.00	0.00
7,100.00	0.00	0.00	6,906.44	-149.16	-883.64	896.14	0.00	0.00	0.00
7,200.00	0.00	0.00	7,006.44	-149.16	-883.64	896.14	0.00	0.00	0.00
7,300.00	0.00	0.00	7,106.44	-149.16	-883.64	896.14	0.00	0.00	0.00
7,400.00	0.00	0.00	7,206.44	-149.16	-883.64	896.14	0.00	0.00	0.00
7,500.00	0.00	0.00	7,306.44	-149.16	-883.64	896.14	0.00	0.00	0.00
7,600.00	0.00	0.00	7,406.44	-149.16	-883.64	896.14	0.00	0.00	0.00
7,700.00	0.00	0.00	7,506.44	-149.16	-883.64	896.14	0.00	0.00	0.00
7,800.00	0.00	0.00	7,606.44	-149.16	-883.64	896.14	0.00	0.00	0.00
7,900.00	0.00	0.00	7,706.44	-149.16	-883.64	896.14	0.00	0.00	0.00
8,000.00	0.00	0.00	7,806.44	-149.16	-883.64	896.14	0.00	0.00	0.00
8,100.00	0.00	0.00	7,906.44	-149.16	-883.64	896.14	0.00	0.00	0.00
8,200.00	0.00	0.00	8,006.44	-149.16	-883.64	896.14	0.00	0.00	0.00
8,300.00	0.00	0.00	8,106.44	-149.16	-883.64	896.14	0.00	0.00	0.00
8,400.00	0.00	0.00	8,206.44	-149.16	-883.64	896.14	0.00	0.00	0.00
8,500.00	0.00	0.00	8,306.44	-149.16	-883.64	896.14	0.00	0.00	0.00
8,600.00	0.00	0.00	8,406.44	-149.16	-883.64	896.14	0.00	0.00	0.00
8,700.00	0.00	0.00	8,506.44	-149.16	-883.64	896.14	0.00	0.00	0.00
8,800.00	0.00	0.00	8,606.44	-149.16	-883.64	896.14	0.00	0.00	0.00
8,900.00	0.00	0.00	8,706.44	-149.16	-883.64	896.14	0.00	0.00	0.00
9,000.00	0.00	0.00	8,806.44	-149.16	-883.64	896.14	0.00	0.00	0.00
TD at 9054.56 - PBHL PWD 21-6-91									
9,054.56	0.00	0.00	8,861.00	-149.16	-883.64	896.14	0.00	0.00	0.00

Design Targets

Target Name	Dip Angle (°)	Dip Dir. (°)	TVD (ft)	+N/-S (ft)	+E/-W (ft)	Northing (ft)	Easting (ft)	Latitude	Longitude
- hit/miss target									
- Shape									
PBHL PWD 21-6-91	0.00	0.00	8,861.00	-149.16	-883.64	1,616,549.98	2,419,044.04	39° 30' 29.272 N	107° 33' 33.103 W
- plan hits target center									
- Circle (radius 100.00)									

Database: EDM 2003.21 Single User Db
Company: DEJOUR ENERGY COMPANY
Project: GARFIELD COUNTY CO
Site: PAD 21A
Well: PWD 21-6-91
Wellbore: PWD 21-6-91
Design: Design #1

Local Co-ordinate Reference: Well PWD 21-6-91
TVD Reference: WELL @ 7028.00ft (Original Well Elev)
MD Reference: WELL @ 7028.00ft (Original Well Elev)
North Reference: True
Survey Calculation Method: Minimum Curvature

Casing Points

Measured Depth (ft)	Vertical Depth (ft)	Name	Casing Diameter (")	Hole Diameter (")
1,500.00	1,414.77	9 5/8"	9-5/8	12-1/4

Plan Annotations

Measured Depth (ft)	Vertical Depth (ft)	Local Coordinates		Comment
		+N/-S (ft)	+E/-W (ft)	
200.00	200.00	0.00	0.00	Start Build 3.00
1,200.00	1,154.93	-22.30	-254.90	Start DLS 3.01 TFO -92.96
1,311.04	1,251.13	-30.35	-309.75	Start 662.93 hold at 1311.04 MD
1,968.80	1,820.78	-97.02	-631.77	Start Drop -3.0000
1,973.98	1,825.26	-97.54	-634.30	Start Drop -3.01
2,969.22	2,775.66	-149.16	-883.64	Start 6085.34 hold at 2969.22 MD
9,054.56	8,861.00	-149.16	-883.64	TD at 9054.56



DEJOUR ENERGY INC.
RESOURCEFUL. ENTERPRISING

DEJOUR ENERGY COMPANY

GARFIELD COUNTY CO

PAD 21A

PWD 21-6-91

PWD 21-6-91

Design #1

Anticollision Report

08 September, 2011



Weatherford®



Company:	DEJOUR ENERGY COMPANY	Local Co-ordinate Reference:	Well PWD 21-6-91
Project:	GARFIELD COUNTY CO	TVD Reference:	WELL @ 7028.00ft (Original Well Elev)
Reference Site:	PAD 21A	MD Reference:	WELL @ 7028.00ft (Original Well Elev)
Site Error:	0.00ft	North Reference:	True
Reference Well:	PWD 21-6-91	Survey Calculation Method:	Minimum Curvature
Well Error:	0.00ft	Output errors are at	2.00 sigma
Reference Wellbore	PWD 21-6-91	Database:	EDM 2003.21 Single User Db
Reference Design:	Design #1	Offset TVD Reference:	Offset Datum

Reference Design #1

Filter type:	NO GLOBAL FILTER: Using user defined selection & filtering criteria		
Interpolation Method:	MD Interval 100.00ft	Error Model:	ISCWSA
Depth Range:	Unlimited	Scan Method:	Closest Approach 3D
Results Limited by:	Maximum center-center distance of 10,000.00ft	Error Surface:	Elliptical Conic
Warning Levels Evaluated at:	2.00 Sigma		

Survey Tool Program Date 9/8/2011

From (ft)	To (ft)	Survey (Wellbore)	Tool Name	Description
0.00	9,054.04	Design #1 (PWD 21-6-91)	MWD	MWD - Standard

Summary

Site Name	Reference Measured Depth (ft)	Offset Measured Depth (ft)	Distance Between Centres (ft)	Distance Between Ellipses (ft)	Separation Factor	Warning
Offset Well - Wellbore - Design						
PAD 21A						
6/7-13-21 - 6/7-13-21 - Design #1	200.00	200.00	39.99	39.37	63.549	CC
6/7-13-21 - 6/7-13-21 - Design #1	400.00	403.60	40.28	38.74	26.207	ES
6/7-13-21 - 6/7-13-21 - Design #1	1,200.00	1,203.63	99.02	86.89	8.163	SF
6/7-14-21 - 6/7-14-21 - Design #1	200.00	200.00	8.00	7.37	12.707	CC
6/7-14-21 - 6/7-14-21 - Design #1	300.00	299.79	8.20	7.14	7.726	ES
6/7-14-21 - 6/7-14-21 - Design #1	1,200.00	1,197.49	30.08	18.64	2.631	SF
6/7-15-21 - 6/7-15-21 - Design #2	200.00	200.00	8.00	7.37	12.708	CC
6/7-15-21 - 6/7-15-21 - Design #2	300.00	300.11	8.38	7.32	7.910	ES
6/7-15-21 - 6/7-15-21 - Design #2	2,200.00	2,200.66	57.68	25.98	1.820	SF
6/7-16-21 - 6/7-16-21 - Design #1	200.00	200.00	15.99	15.37	25.415	CC, ES
6/7-16-21 - 6/7-16-21 - Design #1	2,200.00	2,190.04	188.68	156.80	5.919	SF

Offset Design PAD 21A - 6/7-13-21 - 6/7-13-21 - Design #1

Survey Program: 0-MWD													Offset Site Error: 0.00ft
Reference Offset Semi Major Axis													Offset Well Error: 0.00ft
Measured Depth (ft)	Vertical Depth (ft)	Measured Depth (ft)	Vertical Depth (ft)	Reference (ft)	Offset (ft)	Highside Toolface (°)	Offset Wellbore Centre +N/-S (ft)	+E/-W (ft)	Distance Between Centres (ft)	Distance Between Ellipses (ft)	Minimum Separation (ft)	Separation Factor	Warning
0.00	0.00	0.00	0.00	0.00	0.00	59.99	20.00	34.63	39.99				
100.00	100.00	100.00	100.00	0.09	0.09	59.99	20.00	34.63	39.99	39.81	0.18	222.422	
200.00	200.00	200.00	200.00	0.31	0.31	59.99	20.00	34.63	39.99	39.37	0.63	83.549	CC
300.00	299.95	301.86	301.79	0.53	0.54	153.62	20.61	31.52	40.03	38.96	1.07	37.291	
400.00	399.63	403.60	403.08	0.77	0.80	149.55	22.43	22.22	40.28	38.74	1.54	26.207	ES
500.00	498.77	505.13	503.37	1.06	1.12	142.97	25.45	6.81	41.13	39.05	2.08	19.774	
600.00	597.08	606.33	602.17	1.42	1.54	134.41	29.65	-14.60	43.14	40.35	2.79	15.468	
700.00	694.31	707.10	699.03	1.88	2.07	124.82	34.98	-41.83	46.94	43.19	3.75	12.508	
800.00	790.18	807.35	793.52	2.43	2.73	115.34	41.41	-74.67	52.98	47.88	5.00	10.596	
900.00	884.43	907.00	885.23	3.09	3.51	106.83	48.89	-112.88	61.45	54.95	6.50	9.451	
1,000.00	976.81	1,005.96	973.79	3.86	4.42	99.67	57.37	-156.17	72.30	64.09	8.21	8.804	
1,100.00	1,067.06	1,104.61	1,059.61	4.75	5.45	94.28	66.71	-203.89	85.25	75.15	10.10	8.438	
1,200.00	1,154.93	1,203.63	1,145.37	5.75	6.51	92.77	76.22	-252.48	99.02	86.89	12.13	8.163	SF
1,300.00	1,241.56	1,302.24	1,230.77	6.75	7.59	98.42	85.70	-300.88	115.52	101.41	14.11	8.187	
1,400.00	1,328.17	1,400.30	1,315.68	7.75	8.66	99.13	95.12	-348.99	135.14	119.00	16.13	8.375	
1,500.00	1,414.77	1,498.35	1,400.60	8.82	9.74	99.22	104.54	-397.11	154.78	136.54	18.24	8.485	
1,600.00	1,501.38	1,596.40	1,485.51	9.91	10.82	99.30	113.97	-445.23	174.43	154.07	20.36	8.588	
1,700.00	1,587.98	1,694.45	1,570.42	10.99	11.90	99.35	123.39	-493.34	194.08	171.60	22.48	8.633	
1,800.00	1,674.59	1,792.50	1,655.33	12.08	12.99	99.40	132.81	-541.46	213.72	189.12	24.61	8.686	
1,900.00	1,761.19	1,890.55	1,740.24	13.17	14.07	99.44	142.23	-589.57	233.37	206.64	26.73	8.729	
2,000.00	1,847.89	1,988.61	1,825.16	14.24	15.16	99.59	151.65	-637.69	252.99	224.14	28.85	8.770	

CC - Min centre to center distance or convergent point, SF - min separation factor, ES - min ellipse separation



Company: DEJOUR ENERGY COMPANY
Project: GARFIELD COUNTY CO
Reference Site: PAD 21A
Site Error: 0.00ft
Reference Well: PWD 21-6-91
Well Error: 0.00ft
Reference Wellbore: PWD 21-6-91
Reference Design: Design #1

Local Co-ordinate Reference: Well PWD 21-6-91
TVD Reference: WELL @ 7028.00ft (Original Well Elev)
MD Reference: WELL @ 7028.00ft (Original Well Elev)
North Reference: True
Survey Calculation Method: Minimum Curvature
Output errors are at 2.00 sigma
Database: EDM 2003.21 Single User Db
Offset TVD Reference: Offset Datum

Offset Design PAD 21A - 6/7-13-21 - 6/7-13-21 - Design #1													Offset Site Error: 0.00 ft
Survey Program: O-MWD													Offset Well Error: 0.00 ft
Reference													
Offset		Semi Major Axis		Distance									
Measured Depth (ft)	Vertical Depth (ft)	Measured Depth (ft)	Vertical Depth (ft)	Reference (ft)	Offset (ft)	Highside Toolface (°)	Offset Wellbore Centre +N/-S (ft)	+E/-W (ft)	Between Centres (ft)	Between Ellipses (ft)	Minimum Separation (ft)	Separation Factor	Warning
2,100.00	1,936.41	2,086.70	1,910.11	15.09	16.25	99.35	161.08	-685.83	272.01	241.24	30.77	8.840	
2,200.00	2,027.26	2,184.63	1,994.92	15.85	17.34	98.16	170.49	-733.89	290.34	257.75	32.58	8.911	
2,300.00	2,120.18	2,282.13	2,079.35	16.53	18.42	96.20	179.86	-781.73	308.34	274.10	34.24	9.004	
2,400.00	2,214.91	2,376.92	2,163.17	17.11	19.49	93.64	189.16	-829.23	326.55	290.84	35.71	9.145	
2,500.00	2,311.19	2,474.73	2,246.15	17.61	20.56	90.61	198.36	-876.25	345.58	308.66	36.92	9.359	
2,600.00	2,408.76	2,569.31	2,328.05	18.01	21.61	87.24	207.45	-922.66	366.13	328.27	37.86	9.671	
2,700.00	2,507.34	2,662.39	2,408.65	18.32	22.64	83.69	216.39	-968.33	386.90	350.41	38.49	10.104	
2,800.00	2,606.66	2,753.71	2,487.74	18.55	23.66	80.07	225.17	-1,013.15	414.56	375.74	38.82	10.679	
2,900.00	2,706.45	2,843.02	2,565.08	18.70	24.65	76.50	233.75	-1,056.97	443.72	404.85	38.87	11.414	
3,000.00	2,806.44	2,930.18	2,640.57	18.78	25.62	-28.91	242.13	-1,099.75	476.78	438.17	38.61	12.349	
3,100.00	2,906.44	3,016.78	2,715.56	18.85	26.59	-32.91	250.45	-1,142.24	512.83	474.78	38.06	13.475	
3,200.00	3,006.44	3,103.38	2,790.56	18.92	27.55	-36.43	258.77	-1,184.74	551.07	513.57	37.49	14.697	
3,300.00	3,106.44	3,189.98	2,865.55	18.99	28.51	-39.54	267.09	-1,227.24	591.06	554.10	36.96	15.994	
3,400.00	3,206.44	3,276.58	2,940.55	19.07	29.48	-42.28	275.41	-1,269.73	632.48	596.02	36.46	17.347	
3,500.00	3,306.44	3,363.18	3,015.54	19.14	30.44	-44.71	283.73	-1,312.23	675.06	639.04	36.02	18.740	
3,600.00	3,406.44	3,449.83	3,104.70	19.22	31.53	-47.23	293.51	-1,362.15	718.32	682.78	35.54	20.211	
3,700.00	3,506.44	3,536.54	3,194.29	19.30	32.76	-50.01	306.08	-1,426.37	757.08	722.14	34.94	21.668	
3,800.00	3,606.44	3,623.24	3,284.46	19.39	33.77	-52.08	316.99	-1,482.09	788.45	753.91	34.55	22.823	
3,900.00	3,706.44	3,710.39	3,359.16	19.47	34.52	-53.50	325.38	-1,524.92	811.24	778.88	34.37	23.606	
4,000.00	3,806.44	4,132.58	3,738.32	19.56	34.98	-54.29	330.45	-1,550.82	824.50	790.12	34.38	23.981	
4,100.00	3,906.44	4,300.90	3,906.44	19.65	35.15	-54.48	331.75	-1,557.46	827.84	793.27	34.57	23.949	
4,200.00	4,006.44	4,400.90	4,006.44	19.75	35.21	-54.48	331.75	-1,557.46	827.84	793.07	34.77	23.812	
4,300.00	4,106.44	4,500.90	4,106.44	19.84	35.26	-54.48	331.75	-1,557.46	827.84	792.87	34.97	23.674	
4,400.00	4,206.44	4,600.90	4,206.44	19.94	35.32	-54.48	331.75	-1,557.46	827.84	792.66	35.16	23.534	
4,500.00	4,306.44	4,700.90	4,306.44	20.04	35.38	-54.48	331.75	-1,557.46	827.84	792.45	35.39	23.392	
4,600.00	4,406.44	4,800.90	4,406.44	20.14	35.44	-54.48	331.75	-1,557.46	827.84	792.23	35.61	23.250	
4,700.00	4,506.44	4,900.90	4,506.44	20.24	35.50	-54.48	331.75	-1,557.46	827.84	792.01	35.83	23.106	
4,800.00	4,606.44	5,000.90	4,606.44	20.34	35.56	-54.48	331.75	-1,557.46	827.84	791.78	36.05	22.962	
4,900.00	4,706.44	5,100.90	4,706.44	20.45	35.62	-54.48	331.75	-1,557.46	827.84	791.56	36.28	22.816	
5,000.00	4,806.44	5,200.90	4,806.44	20.56	35.69	-54.48	331.75	-1,557.46	827.84	791.32	36.52	22.670	
5,100.00	4,906.44	5,300.90	4,906.44	20.67	35.75	-54.48	331.75	-1,557.46	827.84	791.08	36.75	22.524	
5,200.00	5,006.44	5,400.90	5,006.44	20.78	35.82	-54.48	331.75	-1,557.46	827.84	790.84	37.00	22.376	
5,300.00	5,106.44	5,500.90	5,106.44	20.90	35.89	-54.48	331.75	-1,557.46	827.84	790.60	37.24	22.229	
5,400.00	5,206.44	5,600.90	5,206.44	21.01	35.96	-54.48	331.75	-1,557.46	827.84	790.35	37.49	22.081	
5,500.00	5,306.44	5,700.90	5,306.44	21.13	36.03	-54.48	331.75	-1,557.46	827.84	790.09	37.74	21.933	
5,600.00	5,406.44	5,800.90	5,406.44	21.25	36.10	-54.48	331.75	-1,557.46	827.84	789.84	38.00	21.785	
5,700.00	5,506.44	5,900.90	5,506.44	21.37	36.18	-54.48	331.75	-1,557.46	827.84	789.58	38.26	21.637	
5,800.00	5,606.44	6,000.90	5,606.44	21.49	36.25	-54.48	331.75	-1,557.46	827.84	789.31	38.52	21.489	
5,900.00	5,706.44	6,100.90	5,706.44	21.62	36.33	-54.48	331.75	-1,557.46	827.84	789.05	38.79	21.341	
6,000.00	5,806.44	6,200.90	5,806.44	21.75	36.40	-54.48	331.75	-1,557.46	827.84	788.78	39.06	21.193	
6,100.00	5,906.44	6,300.90	5,906.44	21.87	36.48	-54.48	331.75	-1,557.46	827.84	788.50	39.33	21.046	
6,200.00	6,006.44	6,400.90	6,006.44	22.00	36.56	-54.48	331.75	-1,557.46	827.84	788.23	39.61	20.899	
6,300.00	6,106.44	6,500.90	6,106.44	22.13	36.64	-54.48	331.75	-1,557.46	827.84	787.95	39.89	20.752	
6,400.00	6,206.44	6,600.90	6,206.44	22.27	36.73	-54.48	331.75	-1,557.46	827.84	787.66	40.17	20.606	
6,500.00	6,306.44	6,700.90	6,306.44	22.40	36.81	-54.48	331.75	-1,557.46	827.84	787.38	40.46	20.460	
6,600.00	6,406.44	6,800.90	6,406.44	22.53	36.89	-54.48	331.75	-1,557.46	827.84	787.09	40.75	20.315	
6,700.00	6,506.44	6,900.90	6,506.44	22.67	36.98	-54.48	331.75	-1,557.46	827.84	786.80	41.04	20.171	
6,800.00	6,606.44	7,000.90	6,606.44	22.81	37.07	-54.48	331.75	-1,557.46	827.84	786.50	41.34	20.027	
6,900.00	6,706.44	7,100.90	6,706.44	22.95	37.15	-54.48	331.75	-1,557.46	827.84	786.21	41.63	19.884	
7,000.00	6,806.44	7,200.90	6,806.44	23.09	37.24	-54.48	331.75	-1,557.46	827.84	785.91	41.93	19.742	
7,100.00	6,906.44	7,300.90	6,906.44	23.23	37.33	-54.48	331.75	-1,557.46	827.84	785.60	42.24	19.601	
7,200.00	7,006.44	7,400.90	7,006.44	23.37	37.42	-54.48	331.75	-1,557.46	827.84	785.30	42.54	19.460	
7,300.00	7,106.44	7,500.90	7,106.44	23.52	37.52	-54.48	331.75	-1,557.46	827.84	784.99	42.85	19.320	
7,400.00	7,206.44	7,600.90	7,206.44	23.66	37.61	-54.48	331.75	-1,557.46	827.84	784.68	43.16	19.181	
7,500.00	7,306.44	7,700.90	7,306.44	23.81	37.71	-54.48	331.75	-1,557.46	827.84	784.37	43.47	19.044	
7,600.00	7,406.44	7,800.90	7,406.44	23.96	37.80	-54.48	331.75	-1,557.46	827.84	784.05	43.79	18.907	
7,700.00	7,506.44	7,900.90	7,506.44	24.11	37.90	-54.48	331.75	-1,557.46	827.84	783.73	44.10	18.771	

CC - Min centre to center distance or covergent point, SF - min separation factor, ES - min ellipse separation



Company:	DEJOUR ENERGY COMPANY	Local Co-ordinate Reference:	Well PWD 21-6-91
Project:	GARFIELD COUNTY CO	TVD Reference:	WELL @ 7028.00ft (Original Well Elev)
Reference Site:	PAD 21A	MD Reference:	WELL @ 7028.00ft (Original Well Elev)
Site Error:	0.00ft	North Reference:	True
Reference Well:	PWD 21-6-91	Survey Calculation Method:	Minimum Curvature
Well Error:	0.00ft	Output errors are at	2.00 sigma
Reference Wellbore	PWD 21-6-91	Database:	EDM 2003.21 Single User Db
Reference Design:	Design #1	Offset TVD Reference:	Offset Datum

Offset Design PAD 21A - 6/7-13-21 - 6/7-13-21 - Design #1													Offset Site Error:	0.00 ft
Survey Program: 0-MWD													Offset Well Error:	0.00 ft
Reference		Offset		Semi Major Axis			Distance							Warning
Measured Depth (ft)	Vertical Depth (ft)	Measured Depth (ft)	Vertical Depth (ft)	Reference (ft)	Offset (ft)	Highside Toolface (°)	Offset Wellbore Centre +N/-S (ft)	+E/-W (ft)	Between Centres (ft)	Between Ellipses (ft)	Minimum Separation (ft)	Separation Factor		
7,800.00	7,806.44	8,000.90	7,806.44	24.26	38.00	-54.48	331.75	-1,557.46	827.84	783.42	44.42	18.636		
7,823.44	7,829.88	8,024.34	7,829.88	24.30	38.01	-54.48	331.75	-1,557.46	827.84	783.36	44.48	18.612		
7,900.00	7,706.44	8,044.46	7,650.00	24.41	38.02	-54.48	331.75	-1,557.46	829.76	785.13	44.63	18.594		
8,000.00	7,806.44	8,044.46	7,650.00	24.57	38.02	-54.48	331.75	-1,557.46	842.49	797.69	44.80	18.806		
8,100.00	7,906.44	8,044.46	7,650.00	24.72	38.02	-54.48	331.75	-1,557.46	866.65	821.67	44.97	19.270		
8,200.00	8,006.44	8,044.46	7,650.00	24.87	38.02	-54.48	331.75	-1,557.46	901.31	856.16	45.15	19.964		
8,300.00	8,106.44	8,044.46	7,650.00	25.03	38.02	-54.48	331.75	-1,557.46	945.33	900.01	45.32	20.857		
8,400.00	8,206.44	8,044.46	7,650.00	25.19	38.02	-54.48	331.75	-1,557.46	997.47	951.97	45.50	21.922		
8,500.00	8,306.44	8,044.46	7,650.00	25.35	38.02	-54.48	331.75	-1,557.46	1,056.52	1,010.84	45.88	23.130		
8,600.00	8,406.44	8,044.46	7,650.00	25.51	38.02	-54.48	331.75	-1,557.46	1,121.39	1,075.53	45.86	24.455		
8,700.00	8,506.44	8,044.46	7,650.00	25.67	38.02	-54.48	331.75	-1,557.46	1,191.14	1,145.10	46.04	25.874		
8,800.00	8,606.44	8,044.46	7,650.00	25.83	38.02	-54.48	331.75	-1,557.46	1,264.95	1,218.73	46.22	27.371		
8,900.00	8,706.44	8,044.46	7,650.00	25.99	38.02	-54.48	331.75	-1,557.46	1,342.15	1,295.76	46.40	28.928		
9,000.00	8,806.44	8,044.46	7,650.00	26.15	38.02	-54.48	331.75	-1,557.46	1,422.21	1,375.63	46.58	30.534		
9,054.56	8,861.00	8,044.46	7,650.00	26.20	38.02	-54.48	331.75	-1,557.46	1,466.91	1,420.29	46.63	31.461		



Company:	DEJOUR ENERGY COMPANY	Local Co-ordinate Reference:	Well PWD 21-6-91
Project:	GARFIELD COUNTY CO	TVD Reference:	WELL @ 7028.00ft (Original Well Elev)
Reference Site:	PAD 21A	MD Reference:	WELL @ 7028.00ft (Original Well Elev)
Site Error:	0.00ft	North Reference:	True
Reference Well:	PWD 21-6-91	Survey Calculation Method:	Minimum Curvature
Well Error:	0.00ft	Output errors are at	2.00 sigma
Reference Wellbore	PWD 21-6-91	Database:	EDM 2003.21 Single User Db
Reference Design:	Design #1	Offset TVD Reference:	Offset Datum

Offset Design PAD 21A - 6/7-14-21 - 6/7-14-21 - Design #1													Offset Site Error:	0.00 ft
Survey Program: 0-MWD													Offset Well Error:	0.00 ft
Reference	Offset	Semi Major Axis		Distance		Minimum		Separation		Warning				
Measured Depth (ft)	Vertical Depth (ft)	Measured Depth (ft)	Vertical Depth (ft)	Reference (ft)	Offset (ft)	Highside Toolface (°)	Offset Wellbore Centre +N/-S (ft)	+E/-W (ft)	Between Centres (ft)	Between Ellipses (ft)	Minimum Separation (ft)	Separation Factor		
0.00	0.00	0.00	0.00	0.00	0.00	-29.99	6.93	-4.00	8.00					
100.00	100.00	100.00	100.00	0.09	0.09	-29.99	6.93	-4.00	8.00	7.82	0.18	44.475		
178.87	178.87	178.87	178.87	0.27	0.27	-29.99	6.93	-4.00	8.00	7.46	0.53	14.966		
200.00	200.00	200.00	200.00	0.31	0.31	-29.99	6.93	-4.00	8.00	7.37	0.63	12.707 CC		
300.00	299.95	299.79	299.74	0.53	0.53	65.79	6.93	-6.60	8.20	7.14	1.06	7.726 ES		
400.00	399.63	399.58	399.21	0.77	0.77	67.91	6.95	-14.42	8.83	7.30	1.53	5.789		
500.00	498.77	499.36	498.13	1.06	1.06	70.84	6.98	-27.41	9.89	7.79	2.10	4.707		
600.00	597.06	599.13	596.23	1.42	1.42	74.00	7.01	-45.55	11.40	8.58	2.82	4.048		
700.00	694.31	698.90	693.24	1.88	1.88	76.98	7.06	-68.79	13.38	9.67	3.71	3.604		
800.00	790.18	798.65	788.89	2.43	2.43	79.58	7.12	-97.05	15.82	11.01	4.81	3.288		
900.00	884.43	898.38	882.92	3.09	3.08	81.75	7.19	-130.27	18.72	12.80	6.13	3.056		
1,000.00	976.81	998.10	975.08	3.86	3.85	83.52	7.27	-168.34	22.07	14.41	7.66	2.880		
1,100.00	1,067.06	1,097.81	1,065.10	4.75	4.73	84.95	7.36	-211.16	25.86	16.43	9.43	2.742		
1,200.00	1,154.93	1,197.49	1,152.76	5.75	5.73	86.09	7.47	-258.62	30.08	18.64	11.43	2.631 SF		
1,300.00	1,241.56	1,297.22	1,239.12	6.75	6.79	92.11	7.57	-308.48	37.15	23.67	13.47	2.757		
1,400.00	1,328.17	1,396.69	1,325.27	7.75	7.87	93.20	7.68	-358.23	47.39	31.84	15.54	3.049		
1,500.00	1,414.77	1,496.16	1,411.41	8.82	8.96	93.53	7.78	-407.97	57.67	39.97	17.70	3.258		
1,600.00	1,501.38	1,595.63	1,497.55	9.91	10.05	93.76	7.89	-457.71	67.94	48.08	19.88	3.421		
1,700.00	1,587.98	1,695.10	1,583.69	10.99	11.14	93.93	7.99	-507.45	78.22	56.19	22.03	3.551		
1,800.00	1,674.59	1,794.57	1,668.83	12.08	12.24	94.06	8.10	-557.19	88.50	64.30	24.20	3.657		
1,900.00	1,761.19	1,894.04	1,755.97	13.17	13.33	94.17	8.20	-606.93	98.78	72.40	26.38	3.745		
2,000.00	1,847.89	1,993.51	1,842.11	14.24	14.43	94.24	8.31	-656.67	109.05	80.51	28.54	3.821		
2,100.00	1,936.41	2,092.93	1,928.20	15.09	15.53	92.69	8.41	-706.38	119.09	88.64	30.45	3.911		
2,200.00	2,027.26	2,192.05	2,014.04	15.85	16.63	89.11	8.52	-755.95	129.24	97.08	32.16	4.019		
2,300.00	2,120.18	2,290.59	2,099.37	16.53	17.72	84.03	8.62	-805.22	140.38	106.89	33.49	4.192		
2,400.00	2,214.91	2,388.29	2,183.98	17.11	18.81	77.96	8.73	-854.08	153.63	119.35	34.28	4.481		
2,500.00	2,311.19	2,484.87	2,287.62	17.81	19.88	71.43	8.83	-902.37	170.16	135.70	34.46	4.938		
2,600.00	2,408.78	2,580.06	2,350.06	18.01	20.93	64.94	8.93	-949.98	190.97	156.91	34.06	5.607		
2,700.00	2,507.34	2,673.62	2,431.07	18.32	21.97	58.84	9.03	-996.76	216.78	183.55	33.23	6.524		
2,800.00	2,606.66	2,765.26	2,510.44	18.55	22.99	53.39	9.12	-1,042.58	247.98	215.84	32.14	7.716		
2,900.00	2,706.45	2,854.75	2,587.93	18.70	23.99	48.65	9.22	-1,087.33	284.69	253.73	30.95	9.197		
3,000.00	2,806.44	2,941.95	2,663.45	18.78	24.95	-57.35	9.31	-1,130.94	326.67	298.98	29.69	11.003		
3,100.00	2,906.44	3,028.55	2,738.44	18.85	25.92	-61.38	9.40	-1,174.24	371.23	342.76	28.48	13.035		
3,200.00	3,006.44	3,115.15	2,813.44	18.92	26.88	-64.58	9.49	-1,217.55	417.03	389.45	27.58	15.121		
3,300.00	3,106.44	3,201.75	2,888.43	18.99	27.84	-67.18	9.59	-1,260.85	463.70	436.76	26.93	17.217		
3,400.00	3,206.44	3,290.78	2,965.54	19.07	28.82	-69.36	9.68	-1,305.35	510.98	484.51	26.47	19.305		
3,500.00	3,306.44	3,411.31	3,072.03	19.14	29.87	-71.61	9.80	-1,361.76	555.71	529.69	26.02	21.359		
3,600.00	3,406.44	3,539.77	3,189.21	19.22	30.82	-73.31	9.91	-1,414.35	595.10	569.30	25.81	23.061		
3,700.00	3,506.44	3,675.70	3,316.74	19.30	31.68	-74.59	10.01	-1,461.30	628.50	602.72	25.78	24.382		
3,800.00	3,606.44	3,818.28	3,453.75	19.39	32.35	-75.53	10.09	-1,500.66	655.28	629.41	25.88	25.325		
3,900.00	3,706.44	3,966.31	3,598.68	19.47	32.87	-76.17	10.16	-1,530.61	674.95	648.89	26.06	25.902		
4,000.00	3,806.44	4,118.26	3,749.40	19.56	33.21	-76.54	10.20	-1,549.57	687.10	680.80	26.30	26.126		
4,100.00	3,906.44	4,272.30	3,903.25	19.65	33.38	-76.67	10.21	-1,556.51	691.49	684.91	26.58	26.016		
4,200.00	4,006.44	4,375.49	4,006.44	19.75	33.44	-76.67	10.21	-1,556.53	691.51	664.67	26.83	25.769		
4,300.00	4,106.44	4,475.49	4,106.44	19.84	33.50	-76.67	10.21	-1,556.53	691.51	664.41	27.09	25.525		
4,400.00	4,206.44	4,575.49	4,206.44	19.94	33.56	-76.67	10.21	-1,556.53	691.51	664.15	27.35	25.281		
4,500.00	4,306.44	4,675.49	4,306.44	20.04	33.62	-76.67	10.21	-1,556.53	691.51	663.89	27.62	25.038		
4,600.00	4,406.44	4,775.49	4,406.44	20.14	33.68	-76.67	10.21	-1,556.53	691.51	663.62	27.89	24.795		
4,700.00	4,506.44	4,875.49	4,506.44	20.24	33.74	-76.67	10.21	-1,556.53	691.51	663.34	28.16	24.553		
4,800.00	4,606.44	4,975.49	4,606.44	20.34	33.80	-76.67	10.21	-1,556.53	691.51	663.06	28.44	24.312		
4,900.00	4,706.44	5,075.49	4,706.44	20.45	33.87	-76.67	10.21	-1,556.53	691.51	662.78	28.73	24.072		
5,000.00	4,806.44	5,175.49	4,806.44	20.56	33.93	-76.67	10.21	-1,556.53	691.51	662.49	29.01	23.833		
5,100.00	4,906.44	5,275.49	4,906.44	20.67	34.00	-76.67	10.21	-1,556.53	691.51	662.20	29.31	23.596		
5,200.00	5,006.44	5,375.49	5,006.44	20.78	34.07	-76.67	10.21	-1,556.53	691.51	661.90	29.60	23.360		
5,300.00	5,106.44	5,475.49	5,106.44	20.90	34.14	-76.67	10.21	-1,556.53	691.51	661.60	29.90	23.126		
5,400.00	5,206.44	5,575.49	5,206.44	21.01	34.21	-76.67	10.21	-1,556.53	691.51	661.30	30.20	22.894		
5,500.00	5,306.44	5,675.49	5,306.44	21.13	34.29	-76.67	10.21	-1,556.53	691.51	680.99	30.51	22.664		

CC - Min centre to center distance or convergent point, SF - min separation factor, ES - min ellipse separation



Company: DEJOUR ENERGY COMPANY
Project: GARFIELD COUNTY CO
Reference Site: PAD 21A
Site Error: 0.00ft
Reference Well: PWD 21-6-91
Well Error: 0.00ft
Reference Wellbore: PWD 21-6-91
Reference Design: Design #1

Local Co-ordinate Reference: Well PWD 21-6-91
TVD Reference: WELL @ 7028.00ft (Original Well Elev)
MD Reference: WELL @ 7028.00ft (Original Well Elev)
North Reference: True
Survey Calculation Method: Minimum Curvature
Output errors are at 2.00 sigma
Database: EDM 2003.21 Single User Db
Offset TVD Reference: Offset Datum

Offset Design PAD 21A - 6/7-14-21 - 6/7-14-21 - Design #1													Offset Site Error: 0.00 ft
Survey Program: 0-MWD													Offset Well Error: 0.00 ft
Reference		Offset		Semi Major Axis		Highside Toolface (°)	Offset Wellbore Centre		Distance				Warning
Measured Depth (ft)	Vertical Depth (ft)	Measured Depth (ft)	Vertical Depth (ft)	Reference (ft)	Offset (ft)		+N/-S (ft)	+E/-W (ft)	Between Centres (ft)	Between Ellipses (ft)	Minimum Separation (ft)	Separation Factor	
5,900.00	5,406.44	5,775.49	5,406.44	21.25	34.36	-76.67	10.21	-1,556.53	691.51	660.68	30.82	22.436	
5,700.00	5,506.44	5,875.49	5,506.44	21.37	34.44	-76.67	10.21	-1,556.53	691.51	660.37	31.13	22.210	
5,800.00	5,606.44	5,975.49	5,606.44	21.49	34.52	-76.67	10.21	-1,556.53	691.51	660.05	31.45	21.987	
5,900.00	5,706.44	6,075.49	5,706.44	21.62	34.59	-76.67	10.21	-1,556.53	691.51	659.73	31.77	21.765	
6,000.00	5,806.44	6,175.49	5,806.44	21.75	34.67	-76.67	10.21	-1,556.53	691.51	659.41	32.09	21.546	
6,100.00	5,906.44	6,275.49	5,906.44	21.87	34.75	-76.67	10.21	-1,556.53	691.51	659.09	32.42	21.330	
6,200.00	6,006.44	6,375.49	6,006.44	22.00	34.84	-76.67	10.21	-1,556.53	691.51	658.76	32.75	21.116	
6,300.00	6,106.44	6,475.49	6,106.44	22.13	34.92	-76.67	10.21	-1,556.53	691.51	658.43	33.08	20.904	
6,400.00	6,206.44	6,575.49	6,206.44	22.27	35.01	-76.67	10.21	-1,556.53	691.51	658.09	33.41	20.695	
6,500.00	6,306.44	6,675.49	6,306.44	22.40	35.09	-76.67	10.21	-1,556.53	691.51	657.75	33.75	20.489	
6,600.00	6,406.44	6,775.49	6,406.44	22.53	35.18	-76.67	10.21	-1,556.53	691.51	657.42	34.09	20.285	
6,700.00	6,506.44	6,875.49	6,506.44	22.67	35.27	-76.67	10.21	-1,556.53	691.51	657.07	34.43	20.083	
6,800.00	6,606.44	6,975.49	6,606.44	22.81	35.36	-76.67	10.21	-1,556.53	691.51	656.73	34.78	19.884	
6,900.00	6,706.44	7,075.49	6,706.44	22.95	35.45	-76.67	10.21	-1,556.53	691.51	656.38	35.12	19.688	
7,000.00	6,806.44	7,175.49	6,806.44	23.09	35.54	-76.67	10.21	-1,556.53	691.51	656.03	35.47	19.495	
7,100.00	6,906.44	7,275.49	6,906.44	23.23	35.63	-76.67	10.21	-1,556.53	691.51	655.68	35.82	19.304	
7,200.00	7,006.44	7,375.49	7,006.44	23.37	35.73	-76.67	10.21	-1,556.53	691.51	655.33	36.18	19.115	
7,300.00	7,106.44	7,475.49	7,106.44	23.52	35.82	-76.67	10.21	-1,556.53	691.51	654.97	36.53	18.929	
7,400.00	7,206.44	7,575.49	7,206.44	23.66	35.92	-76.67	10.21	-1,556.53	691.51	654.62	36.89	18.746	
7,500.00	7,306.44	7,675.49	7,306.44	23.81	36.02	-76.67	10.21	-1,556.53	691.51	654.26	37.25	18.565	
7,600.00	7,406.44	7,775.49	7,406.44	23.96	36.12	-76.67	10.21	-1,556.53	691.51	653.90	37.61	18.387	
7,700.00	7,506.44	7,875.49	7,506.44	24.11	36.22	-76.67	10.21	-1,556.53	691.51	653.53	37.97	18.211	
7,800.00	7,606.44	7,975.49	7,606.44	24.26	36.32	-76.67	10.21	-1,556.53	691.51	653.17	38.34	18.036	
7,900.00	7,706.44	8,075.49	7,706.44	24.41	36.33	-76.67	10.21	-1,556.53	696.89	652.83	38.55	18.075	
8,000.00	7,806.44	8,175.49	7,806.44	24.57	36.33	-76.67	10.21	-1,556.53	716.20	677.45	38.75	18.482	
8,100.00	7,906.44	8,275.49	7,906.44	24.72	36.33	-76.67	10.21	-1,556.53	748.48	709.54	38.95	19.218	
8,200.00	8,006.44	8,375.49	8,006.44	24.87	36.33	-76.67	10.21	-1,556.53	792.16	753.02	39.14	20.238	
8,300.00	8,106.44	8,475.49	8,106.44	25.03	36.33	-76.67	10.21	-1,556.53	845.46	806.12	39.34	21.491	
8,400.00	8,206.44	8,575.49	8,206.44	25.19	36.33	-76.67	10.21	-1,556.53	906.69	867.15	39.54	22.932	
8,500.00	8,306.44	8,675.49	8,306.44	25.35	36.33	-76.67	10.21	-1,556.53	974.36	934.62	39.74	24.521	
8,600.00	8,406.44	8,775.49	8,406.44	25.51	36.33	-76.67	10.21	-1,556.53	1,047.22	1,007.28	39.94	26.223	
8,700.00	8,506.44	8,875.49	8,506.44	25.67	36.33	-76.67	10.21	-1,556.53	1,124.26	1,084.12	40.13	28.012	
8,800.00	8,606.44	8,975.49	8,606.44	25.83	36.33	-76.67	10.21	-1,556.53	1,204.67	1,164.34	40.33	29.867	
8,900.00	8,706.44	9,075.49	8,706.44	25.99	36.33	-76.67	10.21	-1,556.53	1,287.84	1,247.30	40.54	31.771	
9,000.00	8,806.44	9,175.49	8,806.44	26.15	36.33	-76.67	10.21	-1,556.53	1,373.25	1,332.51	40.74	33.711	
9,054.56	8,861.00	9,189.05	8,861.00	26.20	36.33	-76.67	10.21	-1,556.53	1,420.65	1,379.86	40.79	34.827	



Company: DEJOUR ENERGY COMPANY
Project: GARFIELD COUNTY CO
Reference Site: PAD 21A
Site Error: 0.00ft
Reference Well: PWD 21-6-91
Well Error: 0.00ft
Reference Wellbore: PWD 21-6-91
Reference Design: Design #1

Local Co-ordinate Reference: Well PWD 21-6-91
TVD Reference: WELL @ 7028.00ft (Original Well Elev)
MD Reference: WELL @ 7028.00ft (Original Well Elev)
North Reference: True
Survey Calculation Method: Minimum Curvature
Output errors are at 2.00 sigma
Database: EDM 2003.21 Single User Db
Offset TVD Reference: Offset Datum

Offset Design PAD 21A - 6/7-15-21 - 6/7-15-21 - Design #2

Survey Program: 0-MWD

Offset Site Error: 0.00 ft

Offset Well Error: 0.00 ft

Reference		Offset		Semi Major Axis		Highside Toolface (°)	Offset Wellbore Centre		Distance		Minimum Separation (ft)	Separation Factor	Warning
Measured Depth (ft)	Vertical Depth (ft)	Measured Depth (ft)	Vertical Depth (ft)	Reference (ft)	Offset (ft)		+N/-S (ft)	+E/-W (ft)	Between Centres (ft)	Between Ellipses (ft)			
0.00	0.00	0.00	0.00	0.00	0.00	150.01	-6.93	4.00	8.00				
100.00	100.00	100.00	100.00	0.09	0.09	150.01	-6.93	4.00	8.00	7.82	0.18	44.478	
178.87	178.87	178.87	178.87	0.27	0.27	150.01	-6.93	4.00	8.00	7.46	0.53	14.967	
200.00	200.00	200.00	200.00	0.31	0.31	150.01	-6.93	4.00	8.00	7.37	0.63	12.708 CC	
300.00	299.95	300.11	300.07	0.53	0.53	-113.98	-7.56	1.45	8.38	7.32	1.06	7.910 ES	
400.00	399.63	400.22	399.85	0.77	0.77	-111.43	-9.46	-6.18	9.55	8.02	1.53	6.247	
500.00	498.77	500.30	499.06	1.06	1.06	-108.34	-12.63	-18.86	11.52	9.41	2.11	5.467	
600.00	597.08	600.35	597.43	1.42	1.42	-105.44	-17.04	-36.57	14.31	11.48	2.84	5.046	
700.00	694.31	700.36	694.66	1.88	1.88	-103.04	-22.69	-59.24	17.92	14.18	3.74	4.788	
800.00	790.18	800.33	790.49	2.43	2.43	-101.14	-29.56	-86.80	22.33	17.48	4.85	4.605	
900.00	884.43	900.23	884.65	3.09	3.09	-99.66	-37.63	-119.17	27.54	21.37	6.16	4.467	
1,000.00	976.81	1,000.07	978.87	3.86	3.86	-98.50	-46.88	-156.24	33.52	25.82	7.70	4.355	
1,100.00	1,067.06	1,099.84	1,066.91	4.75	4.74	-97.58	-57.27	-197.91	40.25	30.80	9.45	4.258	
1,200.00	1,154.93	1,199.53	1,154.52	5.75	5.73	-96.82	-68.77	-244.05	47.72	36.28	11.44	4.172	
1,300.00	1,241.56	1,289.38	1,240.99	6.75	6.78	-91.35	-80.85	-292.49	52.93	39.44	13.50	3.922	
1,400.00	1,328.17	1,399.36	1,327.58	7.75	7.85	-90.77	-92.94	-340.99	54.98	39.40	15.57	3.530	
1,500.00	1,414.77	1,499.34	1,414.16	8.82	8.93	-90.77	-105.04	-389.50	56.98	39.28	17.73	3.215	
1,600.00	1,501.38	1,599.32	1,500.75	9.91	10.01	-90.77	-117.13	-438.00	58.99	39.10	19.89	2.968	
1,700.00	1,587.98	1,699.30	1,587.33	10.99	11.10	-90.78	-129.22	-486.51	61.00	38.94	22.06	2.765	
1,800.00	1,674.59	1,801.22	1,675.59	12.08	12.14	-90.77	-139.37	-536.45	60.81	36.61	24.19	2.514	
1,900.00	1,761.19	1,901.21	1,762.18	13.17	13.23	-90.76	-148.40	-585.65	59.67	33.29	26.38	2.262	
2,000.00	1,847.89	2,001.21	1,848.76	14.24	14.32	-90.58	-157.42	-634.85	58.53	29.99	28.54	2.051	
2,100.00	1,936.41	2,101.11	1,935.26	15.09	15.42	-88.53	-166.44	-684.01	57.50	27.06	30.44	1.889	
2,146.24	1,978.15	2,147.20	1,975.17	15.44	15.92	-82.88	-170.61	-706.69	57.31	26.16	31.15	1.840	
2,200.00	2,027.26	2,200.66	2,021.45	15.85	16.51	-77.28	-175.43	-733.00	57.68	25.98	31.70	1.820 SF	
2,300.00	2,120.18	2,299.58	2,107.11	16.53	17.80	-83.98	-184.36	-781.68	61.49	30.16	31.33	1.963	
2,400.00	2,214.91	2,397.61	2,191.99	17.11	18.67	-49.69	-193.21	-829.91	71.53	42.51	29.03	2.464	
2,500.00	2,311.19	2,494.47	2,275.85	17.61	19.74	-37.44	-201.96	-877.57	89.11	63.14	25.97	3.431	
2,600.00	2,408.78	2,589.89	2,358.47	18.01	20.79	-28.30	-210.57	-924.52	114.02	90.66	23.36	4.881	
2,700.00	2,507.34	2,683.60	2,439.62	18.32	21.82	-21.83	-219.03	-970.64	145.53	123.99	21.54	6.757	
2,800.00	2,606.66	2,775.36	2,519.07	18.55	22.83	-17.27	-227.32	-1,015.79	182.99	162.63	20.37	8.985	
2,900.00	2,706.45	2,864.90	2,596.60	18.70	23.82	-14.02	-235.40	-1,059.85	225.91	208.30	19.61	11.523	
3,000.00	2,806.44	2,952.10	2,672.11	18.78	24.78	-113.24	-243.27	-1,102.76	273.70	254.55	19.15	14.292	
3,100.00	2,906.44	3,038.69	2,747.08	18.85	25.73	-111.28	-251.09	-1,145.36	322.93	303.83	19.10	16.908	
3,200.00	3,006.44	3,125.28	2,822.05	18.92	26.68	-109.83	-258.91	-1,187.97	372.37	353.14	19.23	19.366	
3,300.00	3,106.44	3,211.86	2,897.02	18.99	27.64	-108.72	-266.73	-1,230.57	421.95	402.48	19.47	21.676	
3,400.00	3,206.44	3,298.45	2,972.00	19.07	28.59	-107.84	-274.54	-1,273.18	471.62	451.85	19.77	23.853	
3,500.00	3,306.44	3,400.27	3,060.57	19.14	29.65	-107.03	-283.61	-1,322.58	520.76	500.61	20.15	25.841	
3,600.00	3,406.44	3,525.14	3,172.33	19.22	30.64	-106.31	-293.65	-1,377.29	565.13	544.53	20.60	27.432	
3,700.00	3,506.44	3,657.95	3,294.92	19.30	31.55	-105.78	-302.85	-1,427.47	603.42	582.33	21.08	28.620	
3,800.00	3,606.44	3,798.06	3,427.76	19.39	32.34	-105.39	-310.87	-1,471.19	635.05	613.47	21.58	29.427	
3,900.00	3,706.44	3,944.49	3,569.68	19.47	32.95	-105.11	-317.36	-1,506.52	659.53	637.47	22.06	29.895	
4,000.00	3,806.44	4,095.84	3,718.81	19.56	33.41	-104.93	-321.98	-1,531.70	676.40	653.88	22.52	30.040	
4,100.00	3,906.44	4,250.40	3,872.70	19.65	33.66	-104.84	-324.48	-1,545.33	685.35	662.43	22.92	29.900	
4,200.00	4,006.44	4,384.17	4,006.44	19.75	33.77	-104.82	-324.90	-1,547.62	686.84	663.58	23.26	29.525	
4,300.00	4,106.44	4,484.17	4,106.44	19.84	33.82	-104.82	-324.90	-1,547.62	686.84	663.29	23.58	29.156	
4,400.00	4,206.44	4,584.17	4,206.44	19.94	33.88	-104.82	-324.90	-1,547.62	686.84	662.99	23.86	28.790	
4,500.00	4,306.44	4,684.17	4,306.44	20.04	33.93	-104.82	-324.90	-1,547.62	686.84	662.68	24.16	28.428	
4,600.00	4,406.44	4,784.17	4,406.44	20.14	33.99	-104.82	-324.90	-1,547.62	686.84	662.38	24.47	28.069	
4,700.00	4,506.44	4,884.17	4,506.44	20.24	34.05	-104.82	-324.90	-1,547.62	686.84	662.06	24.78	27.716	
4,800.00	4,606.44	4,984.17	4,606.44	20.34	34.12	-104.82	-324.90	-1,547.62	686.84	661.75	25.10	27.366	
4,900.00	4,706.44	5,084.17	4,706.44	20.45	34.18	-104.82	-324.90	-1,547.62	686.84	661.43	25.42	27.022	
5,000.00	4,806.44	5,184.17	4,806.44	20.56	34.24	-104.82	-324.90	-1,547.62	686.84	661.10	25.74	26.682	
5,100.00	4,906.44	5,284.17	4,906.44	20.67	34.31	-104.82	-324.90	-1,547.62	686.84	660.78	26.07	26.346	
5,200.00	5,006.44	5,384.17	5,006.44	20.78	34.38	-104.82	-324.90	-1,547.62	686.84	660.44	26.40	26.016	
5,300.00	5,106.44	5,484.17	5,106.44	20.90	34.45	-104.82	-324.90	-1,547.62	686.84	660.11	26.73	25.691	
5,400.00	5,206.44	5,584.17	5,206.44	21.01	34.52	-104.82	-324.90	-1,547.62	686.84	659.77	27.07	25.371	

CC - Min centre to center distance or covergent point, SF - min separation factor, ES - min ellipse separation



Company:	DEJOUR ENERGY COMPANY	Local Co-ordinate Reference:	Well PWD 21-6-91
Project:	GARFIELD COUNTY CO	TVD Reference:	WELL @ 7028.00ft (Original Well Elev)
Reference Site:	PAD 21A	MD Reference:	WELL @ 7028.00ft (Original Well Elev)
Site Error:	0.00ft	North Reference:	True
Reference Well:	PWD 21-6-91	Survey Calculation Method:	Minimum Curvature
Well Error:	0.00ft	Output errors are at	2.00 sigma
Reference Wellbore	PWD 21-6-91	Database:	EDM 2003.21 Single User Db
Reference Design:	Design #1	Offset TVD Reference:	Offset Datum

Offset Design PAD 21A - 6/7-15-21 - 6/7-15-21 - Design #2													Offset Site Error:	0.00 ft
Survey Program: 0-MWD													Offset Well Error:	0.00 ft
Reference		Offset		Semi Major Axis		Highside Toolface (°)	Distance		Between Centres (ft)	Between Ellipses (ft)	Minimum Separation (ft)	Separation Factor	Warning	
Measured Depth (ft)	Vertical Depth (ft)	Measured Depth (ft)	Vertical Depth (ft)	Reference	Offset		Offset Wellbore Centre +N/-S (ft)	+E/-W (ft)						
5,500.00	5,306.44	5,684.17	5,306.44	21.13	34.59	-104.82	-324.90	-1,547.62	686.84	659.43	27.41	25.056		
5,600.00	5,406.44	5,784.17	5,406.44	21.25	34.66	-104.82	-324.90	-1,547.62	686.84	659.09	27.76	24.746		
5,700.00	5,506.44	5,884.17	5,506.44	21.37	34.73	-104.82	-324.90	-1,547.62	686.84	658.74	28.10	24.441		
5,800.00	5,606.44	5,984.17	5,606.44	21.49	34.81	-104.82	-324.90	-1,547.62	686.84	658.39	28.45	24.141		
5,900.00	5,706.44	6,084.17	5,706.44	21.62	34.89	-104.82	-324.90	-1,547.62	686.84	658.04	28.80	23.846		
6,000.00	5,806.44	6,184.17	5,806.44	21.75	34.96	-104.82	-324.90	-1,547.62	686.84	657.69	29.16	23.556		
6,100.00	5,906.44	6,284.17	5,906.44	21.87	35.04	-104.82	-324.90	-1,547.62	686.84	657.33	29.51	23.271		
6,200.00	6,006.44	6,384.17	6,006.44	22.00	35.12	-104.82	-324.90	-1,547.62	686.84	656.97	29.87	22.991		
6,300.00	6,106.44	6,484.17	6,106.44	22.13	35.20	-104.82	-324.90	-1,547.62	686.84	656.61	30.24	22.717		
6,400.00	6,206.44	6,584.17	6,206.44	22.27	35.29	-104.82	-324.90	-1,547.62	686.84	656.25	30.60	22.446		
6,500.00	6,306.44	6,684.17	6,306.44	22.40	35.37	-104.82	-324.90	-1,547.62	686.84	655.88	30.97	22.181		
6,600.00	6,406.44	6,784.17	6,406.44	22.53	35.46	-104.82	-324.90	-1,547.62	686.84	655.51	31.33	21.921		
6,700.00	6,506.44	6,884.17	6,506.44	22.67	35.54	-104.82	-324.90	-1,547.62	686.84	655.14	31.70	21.665		
6,800.00	6,606.44	6,984.17	6,606.44	22.81	35.63	-104.82	-324.90	-1,547.62	686.84	654.77	32.08	21.413		
6,900.00	6,706.44	7,084.17	6,706.44	22.95	35.72	-104.82	-324.90	-1,547.62	686.84	654.40	32.45	21.167		
7,000.00	6,806.44	7,184.17	6,806.44	23.09	35.81	-104.82	-324.90	-1,547.62	686.84	654.02	32.83	20.924		
7,100.00	6,906.44	7,284.17	6,906.44	23.23	35.90	-104.82	-324.90	-1,547.62	686.84	653.64	33.20	20.686		
7,200.00	7,006.44	7,384.17	7,006.44	23.37	35.99	-104.82	-324.90	-1,547.62	686.84	653.26	33.58	20.453		
7,300.00	7,106.44	7,484.17	7,106.44	23.52	36.09	-104.82	-324.90	-1,547.62	686.84	652.88	33.96	20.223		
7,400.00	7,206.44	7,584.17	7,206.44	23.66	36.18	-104.82	-324.90	-1,547.62	686.84	652.50	34.35	19.998		
7,500.00	7,306.44	7,684.17	7,306.44	23.81	36.28	-104.82	-324.90	-1,547.62	686.84	652.12	34.73	19.777		
7,600.00	7,406.44	7,784.17	7,406.44	23.96	36.37	-104.82	-324.90	-1,547.62	686.84	651.73	35.12	19.560		
7,700.00	7,506.44	7,884.17	7,506.44	24.11	36.47	-104.82	-324.90	-1,547.62	686.84	651.34	35.50	19.347		
7,800.00	7,606.44	7,984.17	7,606.44	24.26	36.57	-104.82	-324.90	-1,547.62	686.84	650.95	35.89	19.137		
7,900.00	7,706.44	7,997.73	7,620.00	24.41	36.58	-104.82	-324.90	-1,547.62	692.26	656.14	36.12	19.164		
8,000.00	7,806.44	7,997.73	7,620.00	24.57	36.58	-104.82	-324.90	-1,547.62	711.70	675.37	36.33	19.589		
8,100.00	7,906.44	7,997.73	7,620.00	24.72	36.58	-104.82	-324.90	-1,547.62	744.18	707.64	36.54	20.366		
8,200.00	8,006.44	7,997.73	7,620.00	24.87	36.58	-104.82	-324.90	-1,547.62	788.09	751.34	36.75	21.445		
8,300.00	8,106.44	7,997.73	7,620.00	25.03	36.58	-104.82	-324.90	-1,547.62	841.65	804.69	36.96	22.772		
8,400.00	8,206.44	7,997.73	7,620.00	25.19	36.58	-104.82	-324.90	-1,547.62	903.14	865.97	37.17	24.298		
8,500.00	8,306.44	7,997.73	7,620.00	25.35	36.58	-104.82	-324.90	-1,547.62	971.06	933.68	37.38	25.978		
8,600.00	8,406.44	7,997.73	7,620.00	25.51	36.58	-104.82	-324.90	-1,547.62	1,044.15	1,006.56	37.59	27.777		
8,700.00	8,506.44	7,997.73	7,620.00	25.67	36.58	-104.82	-324.90	-1,547.62	1,121.40	1,083.60	37.80	29.665		
8,800.00	8,606.44	7,997.73	7,620.00	25.83	36.58	-104.82	-324.90	-1,547.62	1,202.01	1,163.99	38.01	31.621		
8,900.00	8,706.44	7,997.73	7,620.00	25.99	36.58	-104.82	-324.90	-1,547.62	1,285.34	1,247.12	38.22	33.626		
9,000.00	8,806.44	7,997.73	7,620.00	26.15	36.58	-104.82	-324.90	-1,547.62	1,370.91	1,332.47	38.44	35.667		
9,054.56	8,861.00	7,997.73	7,620.00	26.20	36.58	-104.82	-324.90	-1,547.62	1,418.39	1,379.90	38.49	36.847		



Company:	DEJOUR ENERGY COMPANY	Local Co-ordinate Reference:	Well PWD 21-6-91
Project:	GARFIELD COUNTY CO	TVD Reference:	WELL @ 7028.00ft (Original Well Elev)
Reference Site:	PAD 21A	MD Reference:	WELL @ 7028.00ft (Original Well Elev)
Site Error:	0.00ft	North Reference:	True
Reference Well:	PWD 21-6-91	Survey Calculation Method:	Minimum Curvature
Well Error:	0.00ft	Output errors are at	2.00 sigma
Reference Wellbore	PWD 21-6-91	Database:	EDM 2003.21 Single User Db
Reference Design:	Design #1	Offset TVD Reference:	Offset Datum

Offset Design PAD 21A - 6/7-16-21 - 6/7-16-21 - Design #1													Offset Site Error:	0.00 ft
Survey Program: 0-MWD													Offset Well Error:	0.00 ft
Reference		Offset		Semi Major Axis		Distance							Warning	
Measured Depth (ft)	Vertical Depth (ft)	Measured Depth (ft)	Vertical Depth (ft)	Reference (ft)	Offset (ft)	Highside Toolface (°)	Offset Wellbore Centre +N/-S (ft)	Offset Wellbore Centre +E/-W (ft)	Between Centres (ft)	Between Ellipses (ft)	Minimum Separation (ft)	Separation Factor		
0.00	0.00	0.00	0.00	0.00	0.00	150.01	-13.85	8.00	15.99					
100.00	100.00	100.00	100.00	0.09	0.09	150.01	-13.85	8.00	15.99	15.82	0.18	88.953	25.415 CC, ES	
200.00	200.00	200.00	200.00	0.31	0.31	150.01	-13.85	8.00	15.99	15.37	0.63	25.415		
300.00	299.95	300.10	300.06	0.53	0.53	-114.20	-14.85	5.57	16.76	15.70	1.06	15.830		
400.00	399.63	400.17	399.80	0.77	0.77	-112.21	-17.85	-1.69	19.05	17.53	1.53	12.477		
500.00	498.77	500.16	498.93	1.06	1.05	-109.76	-22.83	-13.77	22.91	20.81	2.11	10.878		
600.00	597.08	600.04	597.12	1.42	1.42	-107.44	-29.77	-30.60	28.34	25.51	2.83	10.005		
700.00	694.31	699.77	694.09	1.88	1.87	-105.48	-38.64	-52.11	35.34	31.60	3.73	9.464		
800.00	790.18	799.33	789.54	2.43	2.42	-103.90	-49.41	-78.23	43.87	39.05	4.83	9.090		
900.00	884.43	898.68	883.20	3.09	3.08	-102.62	-62.04	-108.84	53.92	47.80	6.12	8.808		
1,000.00	976.81	997.79	974.79	3.86	3.83	-101.59	-76.46	-143.82	65.45	57.83	7.63	8.582		
1,100.00	1,067.06	1,096.64	1,064.06	4.75	4.69	-100.72	-92.84	-183.04	78.42	69.08	9.35	8.391		
1,200.00	1,154.93	1,195.22	1,150.78	5.75	5.65	-99.98	-110.50	-226.34	92.80	81.51	11.28	8.225		
1,300.00	1,241.56	1,294.40	1,236.68	6.75	6.69	-94.55	-129.40	-272.18	105.29	91.97	13.32	7.905		
1,400.00	1,328.17	1,393.96	1,322.91	7.75	7.74	-94.02	-148.38	-318.20	114.64	99.28	15.36	7.462		
1,500.00	1,414.77	1,493.52	1,409.14	8.82	8.80	-94.07	-167.35	-364.22	123.97	106.48	17.49	7.089		
1,600.00	1,501.38	1,593.09	1,495.36	9.91	9.86	-94.11	-186.33	-410.23	133.29	113.67	19.62	6.793		
1,700.00	1,587.98	1,692.65	1,581.59	10.99	10.92	-94.14	-205.31	-456.25	142.62	120.86	21.76	6.554		
1,800.00	1,674.59	1,792.22	1,667.82	12.08	11.99	-94.17	-224.29	-502.27	151.94	128.04	23.91	6.355		
1,900.00	1,761.19	1,891.78	1,754.05	13.17	13.06	-94.20	-243.27	-548.29	161.27	135.21	26.06	6.189		
2,000.00	1,847.89	1,991.34	1,840.27	14.24	14.13	-94.24	-262.24	-594.31	170.58	142.40	28.18	6.052		
2,100.00	1,936.41	2,090.85	1,926.45	15.09	15.20	-93.26	-281.21	-640.30	179.65	149.56	30.10	5.969		
2,200.00	2,027.26	2,190.04	2,012.36	15.85	16.27	-90.81	-300.12	-686.14	188.68	156.80	31.88	5.919	SF	
2,300.00	2,120.18	2,288.66	2,097.76	16.53	17.33	-87.15	-318.92	-731.72	198.31	164.88	33.43	5.833		
2,400.00	2,214.91	2,386.42	2,182.43	17.11	18.39	-82.53	-337.55	-776.91	209.45	174.82	34.64	6.047		
2,500.00	2,311.19	2,483.05	2,266.12	17.61	19.43	-77.27	-355.97	-821.57	223.16	187.76	35.40	6.304		
2,600.00	2,408.78	2,578.30	2,348.80	18.01	20.46	-71.69	-374.12	-865.59	240.47	204.80	35.67	6.741		
2,700.00	2,507.34	2,671.88	2,429.65	18.32	21.47	-66.13	-391.96	-908.65	262.29	226.81	35.48	7.393		
2,800.00	2,606.66	2,763.55	2,509.05	18.55	22.46	-60.83	-409.44	-951.22	289.28	254.38	34.90	8.288		
2,900.00	2,706.45	2,853.06	2,586.56	18.70	23.42	-55.98	-426.50	-992.58	321.82	287.75	34.07	9.445		
3,000.00	2,806.44	2,940.27	2,662.09	18.78	24.37	-153.08	-443.12	-1,032.89	359.89	326.89	33.01	10.904		
3,100.00	2,906.44	3,026.87	2,737.09	18.85	25.30	-148.63	-459.63	-1,072.92	401.11	369.28	31.83	12.601		
3,200.00	3,006.44	3,113.48	2,812.10	18.92	26.24	-144.96	-476.14	-1,112.95	444.14	413.29	30.85	14.395		
3,300.00	3,106.44	3,200.08	2,887.10	18.99	27.17	-141.90	-492.64	-1,152.98	488.49	458.43	30.07	16.247		
3,400.00	3,206.44	3,286.69	2,962.11	19.07	28.11	-139.33	-509.15	-1,193.01	533.85	504.40	29.45	18.127		
3,500.00	3,306.44	3,373.29	3,037.11	19.14	29.05	-137.14	-525.66	-1,233.03	579.97	550.98	28.98	20.010		
3,600.00	3,406.44	3,459.90	3,112.12	19.22	29.98	-135.26	-542.17	-1,273.06	626.68	598.03	28.64	21.878		
3,700.00	3,506.44	3,554.03	3,193.70	19.30	30.97	-133.51	-560.06	-1,316.46	673.78	645.40	28.38	23.741		
3,800.00	3,606.44	3,690.03	3,314.55	19.39	32.10	-131.55	-583.83	-1,374.08	717.40	689.28	28.12	25.516		
3,900.00	3,706.44	3,835.80	3,448.65	19.47	33.08	-130.04	-605.59	-1,426.84	754.88	726.85	28.03	26.930		
4,000.00	3,806.44	3,990.57	3,595.33	19.56	33.93	-128.91	-624.35	-1,472.34	785.45	757.35	28.10	27.951		
4,100.00	3,906.44	4,152.97	3,753.01	19.65	34.58	-128.12	-639.10	-1,508.12	808.43	780.15	28.27	28.595		
4,200.00	4,006.44	4,321.10	3,919.09	19.75	35.03	-127.63	-646.94	-1,531.97	823.25	794.74	28.52	28.870		
4,300.00	4,106.44	4,492.56	4,090.13	19.84	35.27	-127.42	-653.20	-1,542.31	829.55	800.75	28.80	28.799		
4,400.00	4,206.44	4,608.87	4,206.44	19.94	35.33	-127.42	-653.35	-1,542.67	829.78	800.71	29.07	28.547		
4,500.00	4,306.44	4,708.87	4,306.44	20.04	35.38	-127.42	-653.35	-1,542.67	829.78	800.46	29.32	28.302		
4,600.00	4,406.44	4,808.87	4,406.44	20.14	35.44	-127.42	-653.35	-1,542.67	829.78	800.20	29.58	28.056		
4,700.00	4,506.44	4,908.87	4,506.44	20.24	35.50	-127.42	-653.35	-1,542.67	829.78	799.94	29.84	27.811		
4,800.00	4,606.44	5,008.87	4,606.44	20.34	35.55	-127.42	-653.35	-1,542.67	829.78	799.67	30.10	27.566		
4,900.00	4,706.44	5,108.87	4,706.44	20.45	35.61	-127.42	-653.35	-1,542.67	829.78	799.40	30.37	27.321		
5,000.00	4,806.44	5,208.87	4,806.44	20.56	35.67	-127.42	-653.35	-1,542.67	829.78	799.13	30.64	27.078		
5,100.00	4,906.44	5,308.87	4,906.44	20.67	35.73	-127.42	-653.35	-1,542.67	829.78	798.85	30.92	26.834		
5,200.00	5,006.44	5,408.87	5,006.44	20.78	35.80	-127.42	-653.35	-1,542.67	829.78	798.57	31.20	26.592		
5,300.00	5,106.44	5,508.87	5,106.44	20.90	35.86	-127.42	-653.35	-1,542.67	829.78	798.29	31.49	26.351		
5,400.00	5,206.44	5,608.87	5,206.44	21.01	35.92	-127.42	-653.35	-1,542.67	829.78	798.00	31.78	26.111		
5,500.00	5,306.44	5,708.87	5,306.44	21.13	35.99	-127.42	-653.35	-1,542.67	829.78	797.70	32.07	25.873		
5,600.00	5,406.44	5,808.87	5,406.44	21.25	36.06	-127.42	-653.35	-1,542.67	829.78	797.41	32.37	25.636		

CC - Min centre to center distance or covergent point, SF - min separation factor, ES - min ellipse separation



Company: DEJOUR ENERGY COMPANY
Project: GARFIELD COUNTY CO
Reference Site: PAD 21A
Site Error: 0.00ft
Reference Well: PWD 21-6-91
Well Error: 0.00ft
Reference Wellbore: PWD 21-6-91
Reference Design: Design #1

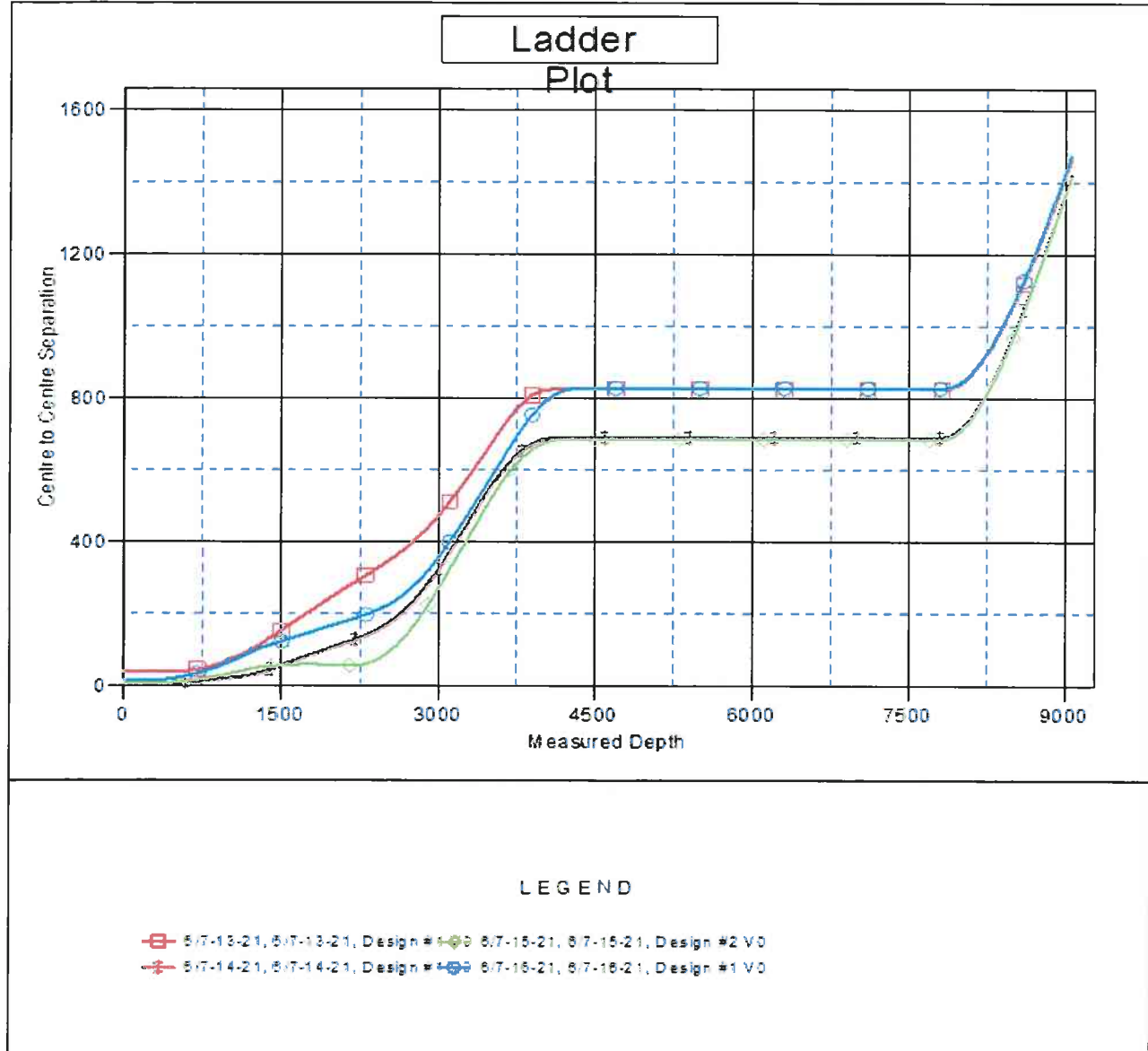
Local Co-ordinate Reference: Well PWD 21-6-91
TVD Reference: WELL @ 7028.00ft (Original Well Elev)
MD Reference: WELL @ 7028.00ft (Original Well Elev)
North Reference: True
Survey Calculation Method: Minimum Curvature
Output errors are at 2.00 sigma
Database: EDM 2003.21 Single User Db
Offset TVD Reference: Offset Datum

Offset Design PAD 21A - 6/7-16-21 - 6/7-16-21 - Design #1													Offset Site Error: 0.00 ft
Survey Program: 0-MWD													Offset Well Error: 0.00 ft
Reference		Offset		Semi Major Axis		Highside Toolface (°)	Distance		Minimum Separation (ft)	Separation Factor	Warning		
Measured Depth (ft)	Vertical Depth (ft)	Measured Depth (ft)	Vertical Depth (ft)	Reference (ft)	Offset (ft)		Offset Wellbore Centre +N/-S (ft)	+E/-W (ft)					
5,700.00	5,506.44	5,908.87	5,506.44	21.37	36.13	-127.42	-653.35	-1,542.67	829.78	797.11	32.67	25.401	
5,800.00	5,606.44	6,008.87	5,606.44	21.49	36.20	-127.42	-653.35	-1,542.67	829.78	796.81	32.97	25.167	
5,900.00	5,706.44	6,108.87	5,706.44	21.62	36.27	-127.42	-653.35	-1,542.67	829.78	796.50	33.28	24.936	
6,000.00	5,806.44	6,208.87	5,806.44	21.75	36.34	-127.42	-653.35	-1,542.67	829.78	796.19	33.59	24.706	
6,100.00	5,906.44	6,308.87	5,906.44	21.87	36.42	-127.42	-653.35	-1,542.67	829.78	795.88	33.90	24.478	
6,200.00	6,006.44	6,408.87	6,006.44	22.00	36.49	-127.42	-653.35	-1,542.67	829.78	795.56	34.21	24.252	
6,300.00	6,106.44	6,508.87	6,106.44	22.13	36.57	-127.42	-653.35	-1,542.67	829.78	795.24	34.53	24.029	
6,400.00	6,206.44	6,608.87	6,206.44	22.27	36.65	-127.42	-653.35	-1,542.67	829.78	794.92	34.85	23.807	
6,500.00	6,306.44	6,708.87	6,306.44	22.40	36.73	-127.42	-653.35	-1,542.67	829.78	794.60	35.18	23.588	
6,600.00	6,406.44	6,808.87	6,406.44	22.53	36.81	-127.42	-653.35	-1,542.67	829.78	794.27	35.50	23.371	
6,700.00	6,506.44	6,908.87	6,506.44	22.67	36.89	-127.42	-653.35	-1,542.67	829.78	793.94	35.83	23.156	
6,800.00	6,606.44	7,008.87	6,606.44	22.81	36.97	-127.42	-653.35	-1,542.67	829.78	793.61	36.17	22.944	
6,900.00	6,706.44	7,108.87	6,706.44	22.95	37.05	-127.42	-653.35	-1,542.67	829.78	793.28	36.50	22.734	
7,000.00	6,806.44	7,208.87	6,806.44	23.09	37.14	-127.42	-653.35	-1,542.67	829.78	792.94	36.84	22.526	
7,100.00	6,906.44	7,308.87	6,906.44	23.23	37.22	-127.42	-653.35	-1,542.67	829.78	792.60	37.18	22.320	
7,200.00	7,006.44	7,408.87	7,006.44	23.37	37.31	-127.42	-653.35	-1,542.67	829.78	792.26	37.52	22.117	
7,300.00	7,106.44	7,508.87	7,106.44	23.52	37.40	-127.42	-653.35	-1,542.67	829.78	791.92	37.86	21.917	
7,400.00	7,206.44	7,608.87	7,206.44	23.66	37.49	-127.42	-653.35	-1,542.67	829.78	791.57	38.21	21.718	
7,500.00	7,306.44	7,708.87	7,306.44	23.81	37.58	-127.42	-653.35	-1,542.67	829.78	791.22	38.55	21.522	
7,600.00	7,406.44	7,808.87	7,406.44	23.96	37.67	-127.42	-653.35	-1,542.67	829.78	790.87	38.90	21.329	
7,700.00	7,506.44	7,908.87	7,506.44	24.11	37.77	-127.42	-653.35	-1,542.67	829.78	790.52	39.26	21.138	
7,800.00	7,606.44	8,008.87	7,606.44	24.26	37.86	-127.42	-653.35	-1,542.67	829.78	790.17	39.61	20.949	
7,800.57	7,607.01	8,009.45	7,607.01	24.26	37.86	-127.42	-653.35	-1,542.67	829.78	790.16	39.61	20.948	
7,900.00	7,706.44	8,042.43	7,640.00	24.41	37.89	-127.42	-653.35	-1,542.67	832.43	792.58	39.86	20.886	
8,000.00	7,806.44	8,042.43	7,640.00	24.57	37.89	-127.42	-653.35	-1,542.67	846.30	806.26	40.05	21.132	
8,100.00	7,906.44	8,042.43	7,640.00	24.72	37.89	-127.42	-653.35	-1,542.67	871.50	831.26	40.24	21.658	
8,200.00	8,006.44	8,042.43	7,640.00	24.87	37.89	-127.42	-653.35	-1,542.67	907.09	866.65	40.43	22.434	
8,300.00	8,106.44	8,042.43	7,640.00	25.03	37.89	-127.42	-653.35	-1,542.67	951.89	911.26	40.63	23.430	
8,400.00	8,206.44	8,042.43	7,640.00	25.19	37.89	-127.42	-653.35	-1,542.67	1,004.68	963.86	40.82	24.612	
8,500.00	8,306.44	8,042.43	7,640.00	25.35	37.89	-127.42	-653.35	-1,542.67	1,064.27	1,023.25	41.02	25.947	
8,600.00	8,406.44	8,042.43	7,640.00	25.51	37.89	-127.42	-653.35	-1,542.67	1,129.58	1,086.37	41.21	27.409	
8,700.00	8,506.44	8,042.43	7,640.00	25.67	37.89	-127.42	-653.35	-1,542.67	1,199.89	1,158.28	41.41	28.972	
8,800.00	8,606.44	8,042.43	7,640.00	25.83	37.89	-127.42	-653.35	-1,542.67	1,273.79	1,232.18	41.61	30.616	
8,900.00	8,706.44	8,042.43	7,640.00	25.99	37.89	-127.42	-653.35	-1,542.67	1,351.23	1,309.43	41.80	32.324	
9,000.00	8,806.44	8,042.43	7,640.00	26.15	37.89	-127.42	-653.35	-1,542.67	1,431.47	1,389.47	42.00	34.082	
9,054.58	8,861.00	8,042.43	7,640.00	26.20	37.89	-127.42	-653.35	-1,542.67	1,476.27	1,434.21	42.05	35.104	

Company: DEJOUR ENERGY COMPANY
Project: GARFIELD COUNTY CO
Reference Site: PAD 21A
Site Error: 0.00ft
Reference Well: PWD 21-6-91
Well Error: 0.00ft
Reference Wellbore: PWD 21-6-91
Reference Design: Design #1

Local Co-ordinate Reference: Well PWD 21-6-91
TVD Reference: WELL @ 7028.00ft (Original Well Elev)
MD Reference: WELL @ 7028.00ft (Original Well Elev)
North Reference: True
Survey Calculation Method: Minimum Curvature
Output errors are at: 2.00 sigma
Database: EDM 2003.21 Single User Db
Offset TVD Reference: Offset Datum

Reference Depths are relative to WELL @ 7028.00ft (Original Well Ele Coordinates are relative to: PWD 21-6-91
Offset Depths are relative to Offset Datum
Central Meridian is 105° 30' 0.000 W °
Coordinate System is US State Plane 1983, Colorado Central Zone
Grid Convergence at Surface is: -1.30°



Company: DEJOUR ENERGY COMPANY
Project: GARFIELD COUNTY CO
Reference Site: PAD 21A
Site Error: 0.00ft
Reference Well: PWD 21-6-91
Well Error: 0.00ft
Reference Wellbore: PWD 21-6-91
Reference Design: Design #1

Local Co-ordinate Reference: Well PWD 21-6-91
TVD Reference: WELL @ 7028.00ft (Original Well Elev)
MD Reference: WELL @ 7028.00ft (Original Well Elev)
North Reference: True
Survey Calculation Method: Minimum Curvature
Output errors are at 2.00 sigma
Database: EDM 2003.21 Single User Db
Offset TVD Reference: Offset Datum

Reference Depths are relative to WELL @ 7028.00ft (Original Well Ele Coordinates are relative to: PWD 21-6-91

Offset Depths are relative to Offset Datum

Central Meridian is 105° 30' 0.000 W °

Coordinate System is US State Plane 1983, Colorado Central Zone

Grid Convergence at Surface is: -1.30°

